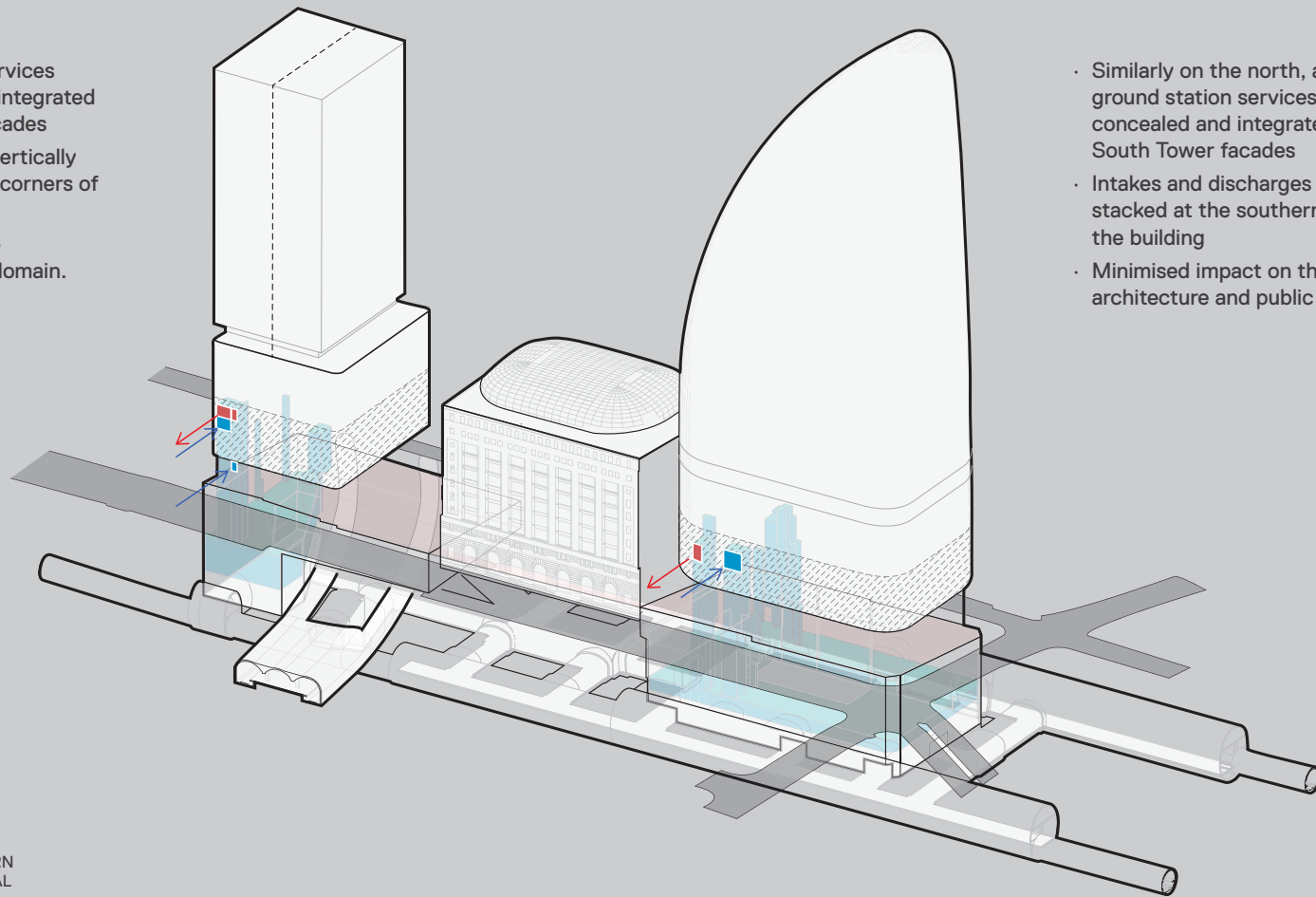


Facade integration

- Above ground station services carefully concealed and integrated into the South Tower facades
- Intakes and discharges vertically stacked at the southern corners of the building
- Minimised impact on the architecture and public domain.

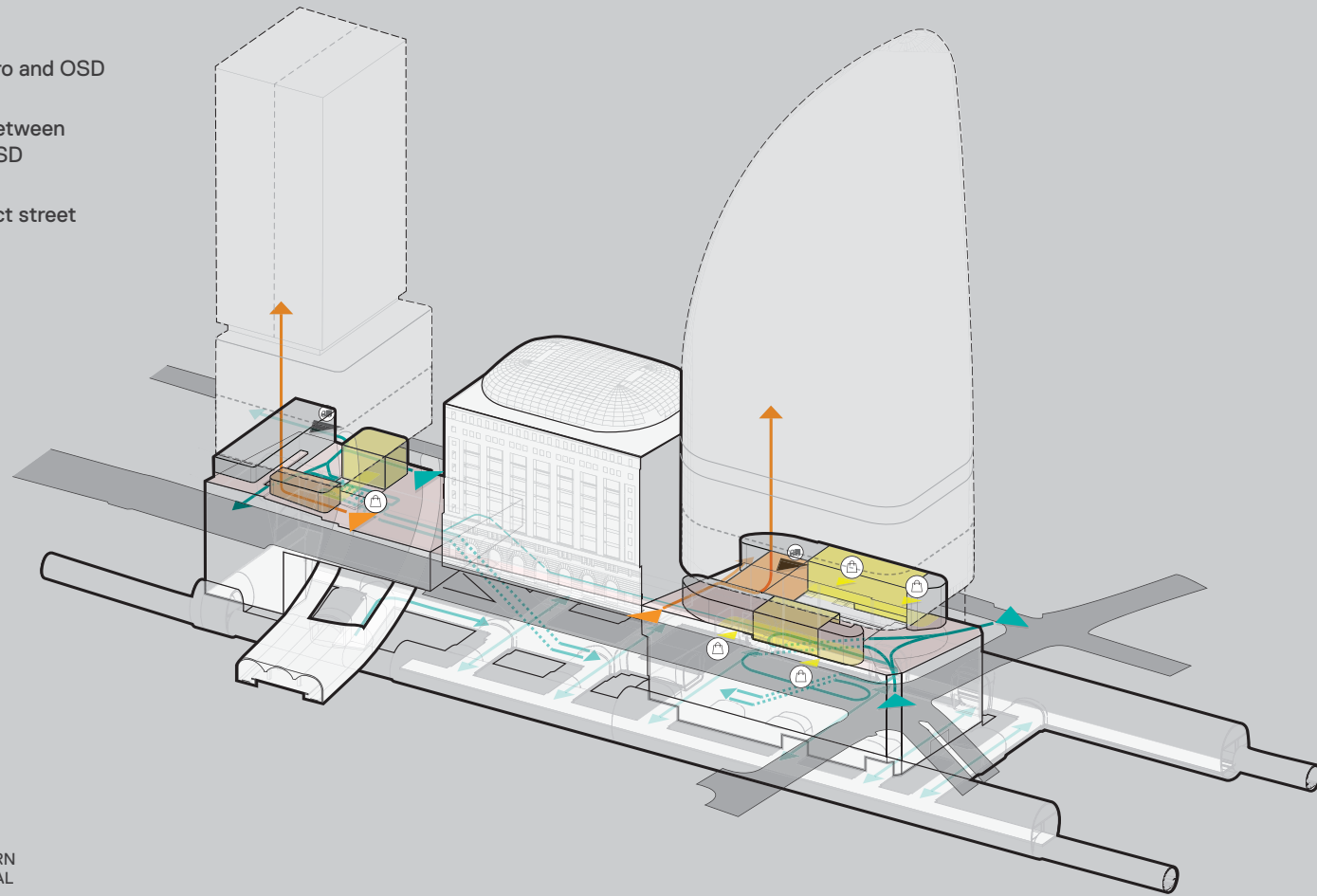


- Similarly on the north, above ground station services carefully concealed and integrated into the South Tower facades
- Intakes and discharges vertically stacked at the southern corners of the building
- Minimised impact on the architecture and public domain.

NOTE: SOUTH TOWER NORTHERN
SETBACK SUBJECT TO APPROVAL

Pedestrian flow integration

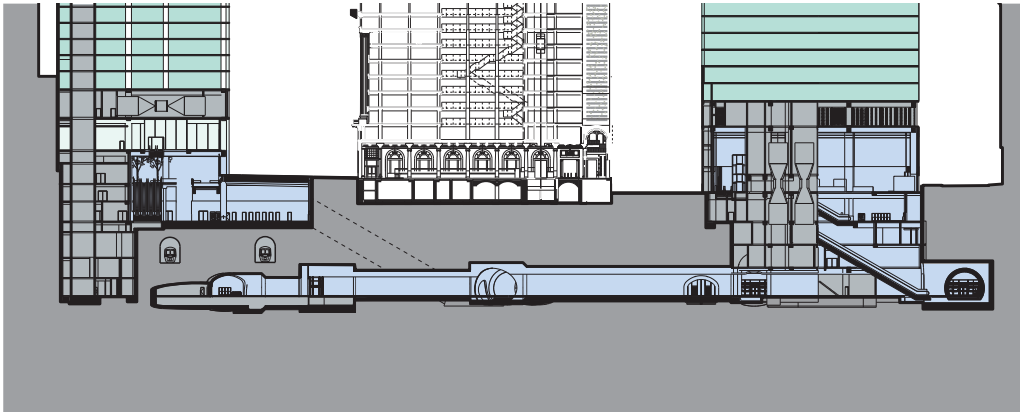
- Clear separation of Metro and OSD entrances
- Minimising cross-flow between Metro customers and OSD occupants
- OSD lobbies have distinct street addresses



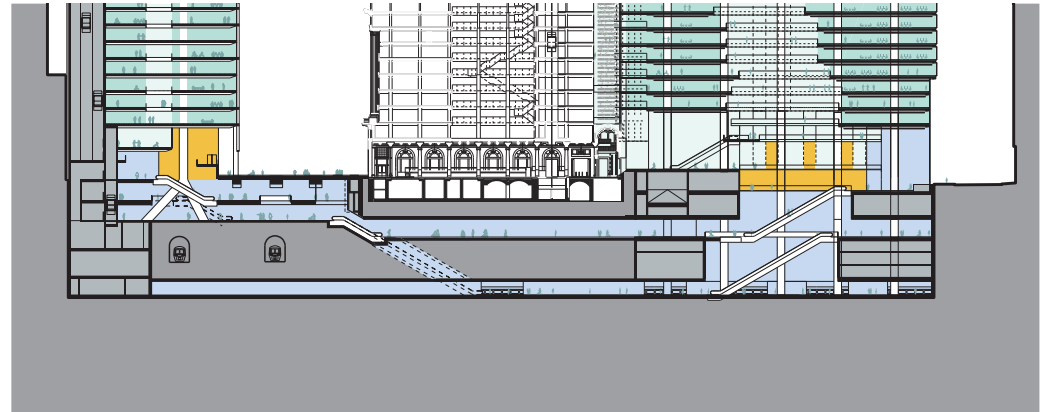
NOTE: SOUTH TOWER NORTHERN
SETBACK SUBJECT TO APPROVAL

Optimised station design

- 1 Larger station offering many public benefits and enhanced customer experience
- 2 Generous entry halls and with daylit atria
- 3 Rationalised customer circulation on centralised alignment, offering intuitive wayfinding
- 4 Opportunities for daylight and natural ventilation to subterranean station
- 5 Views to outside from platform level are possible for enhanced wayfinding
- 6 Station entrances sensitively integrated in the architecture
- 7 Re-allocation of most station plant below ground for improved urban outcome
- 8 Highly coordinated and integrated structure and services between the station and OSD



Reference scheme

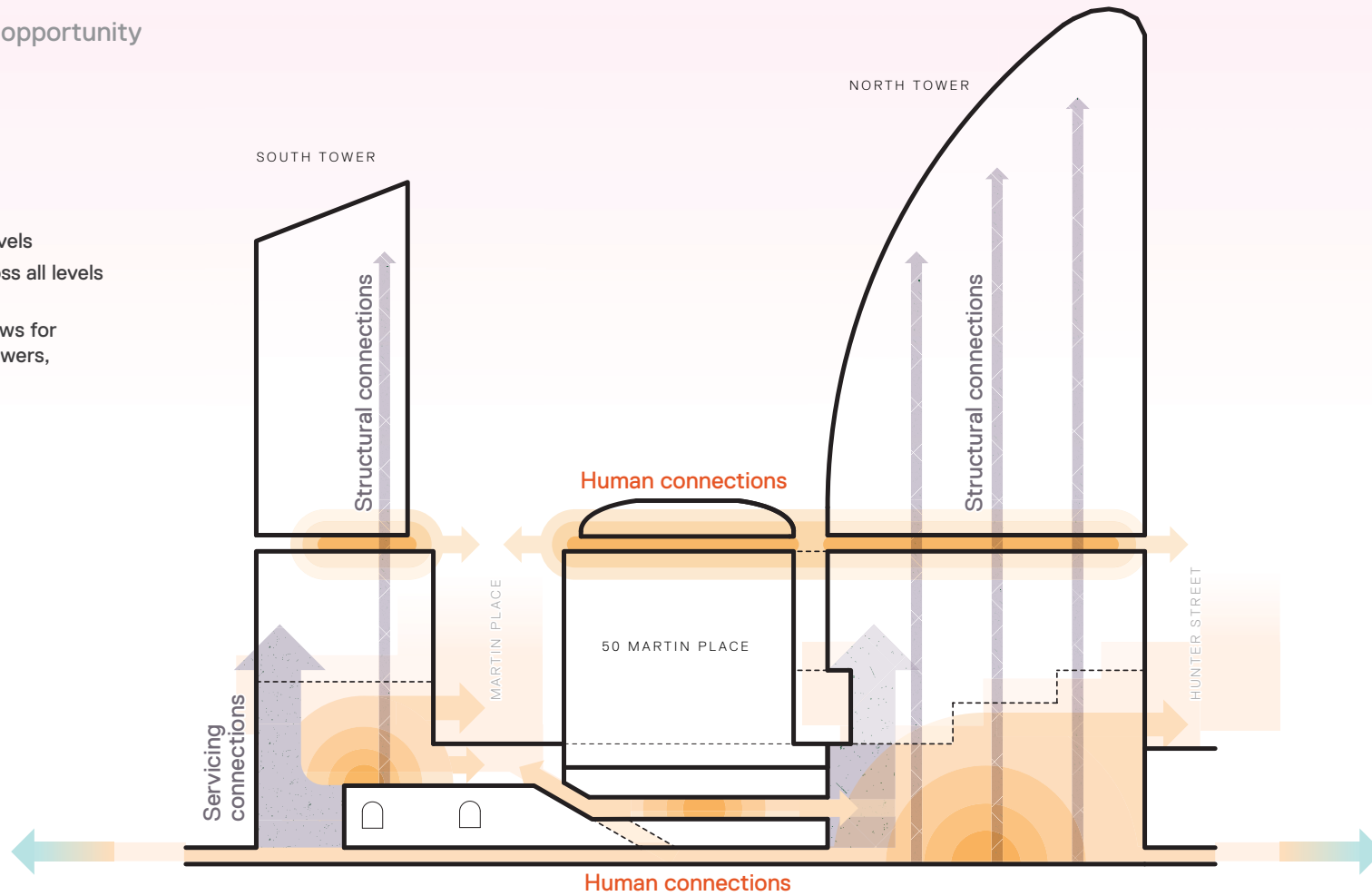


Macquarie scheme

Integrating the station with the OSD

Integration creates opportunity

- Integration of multiple levels
- Human connections across all levels of the precinct
- An integrated design allows for convergence between towers, street and station



A station that works

A world class metro experience

- Each part has its own identity but ties together through common components and materiality
- VT all orientated in direction of travel
- Multiple horizontal connections



- | | |
|-------------------|----------------------|
| 1 Platform level | 4 Southern concourse |
| 2 Northern atrium | 5 Pedestrian link |
| 3 Inclined adit | 6 Northern concourse |

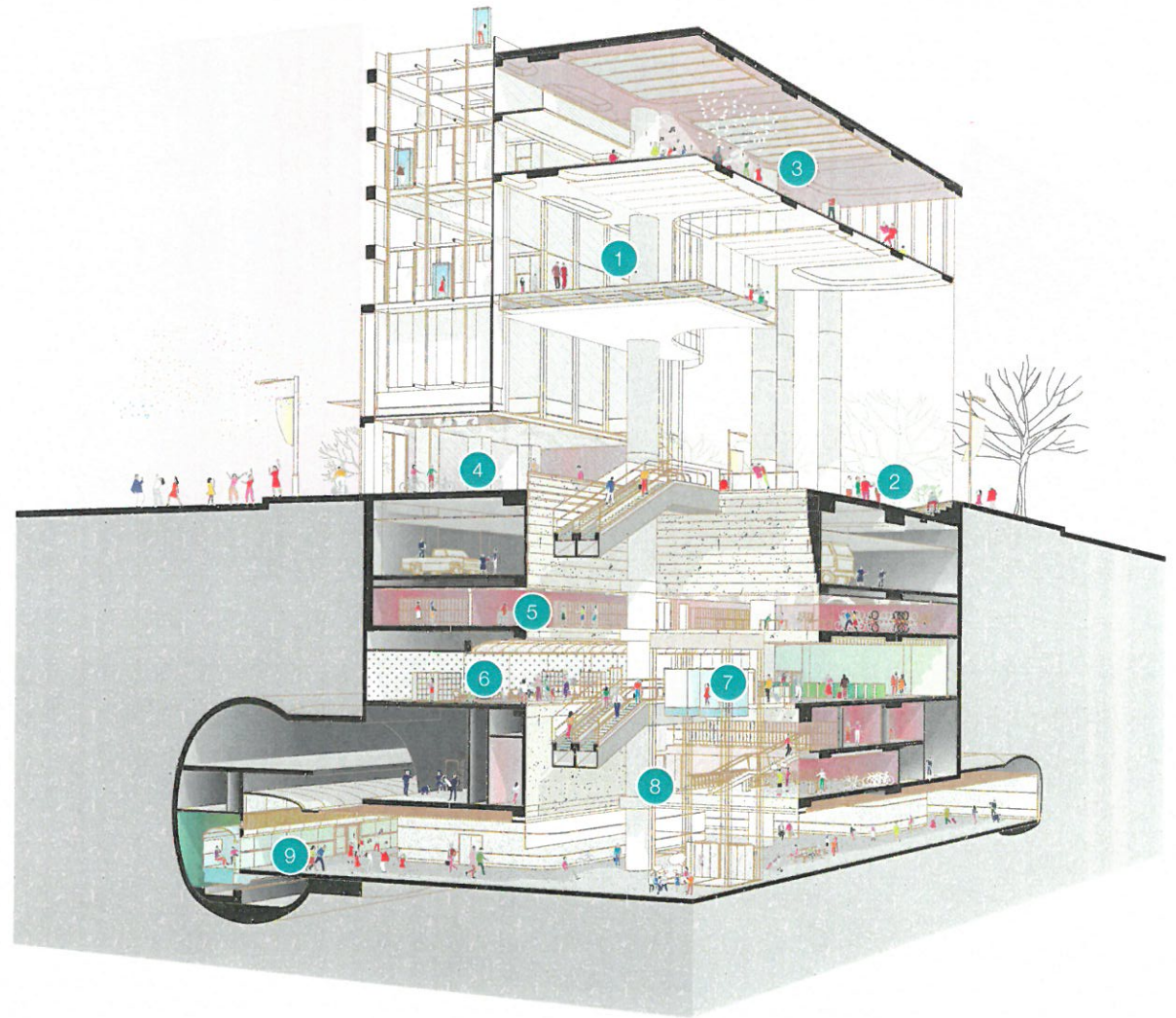


Putting the customer at the centre



1. OSD Lobby
2. Station Entrance
3. Auditorium
4. Castlereagh Retail
5. EoTF
6. Concourse/Retail
7. Gateline
8. Northern Atrium
9. Platform

- Station design is driven by customer experience
- Varied programme that interweaves around central atrium
- Variety, transparency and drama

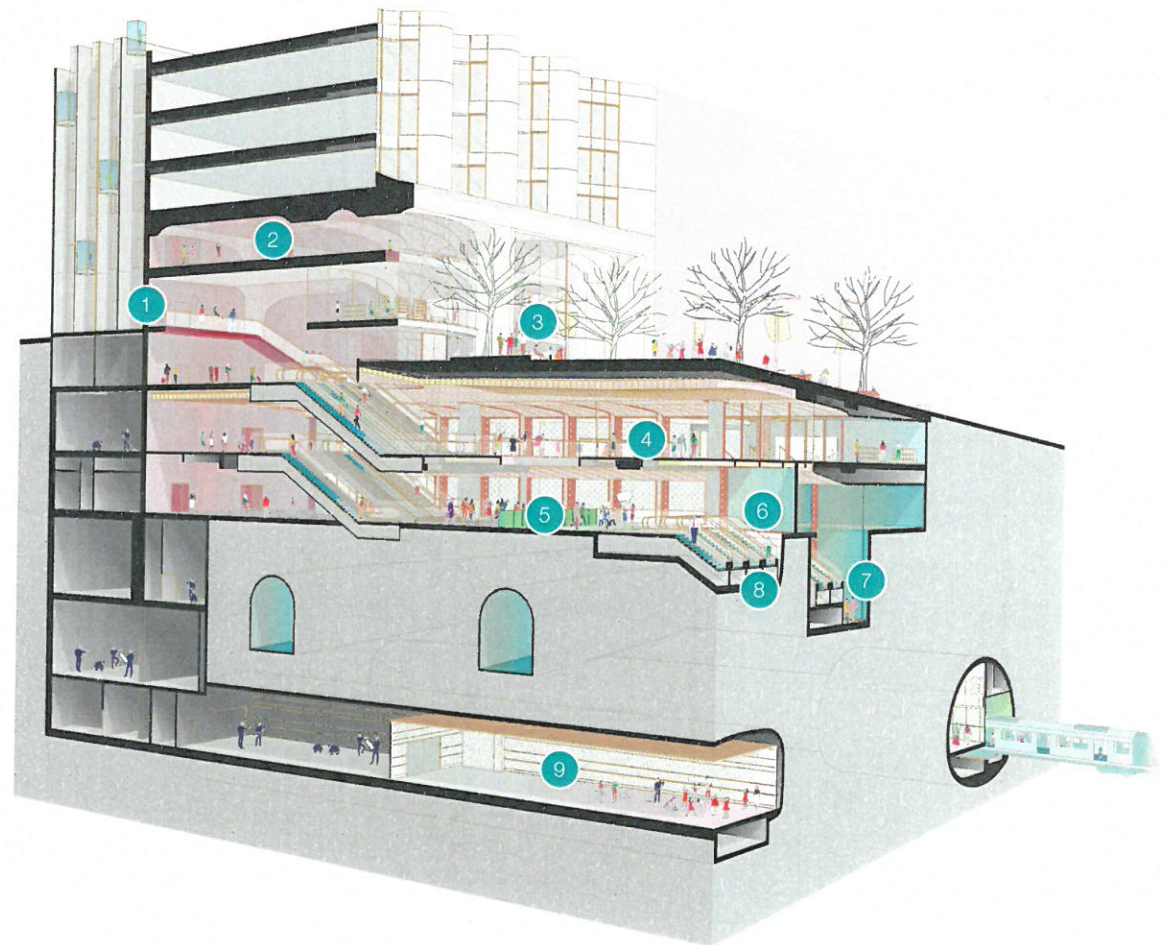


Putting the customer at the centre



1. Elizabeth Street Station Entrance
2. OSD Lobby
3. Retail
4. B1 Southern Concourse/Retail
5. Gateline
6. B2 Southern Concourse/Retail
7. Pedestrian link connection
8. Inclined adit to platform
9. Platform

- Maximises opportunities within a constrained site
- Emphasis on transparency and intuitive wayfinding
- Heightened customer experience



A high quality modular 'kit of parts'

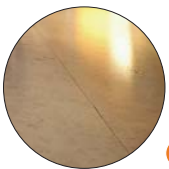
The retail experience



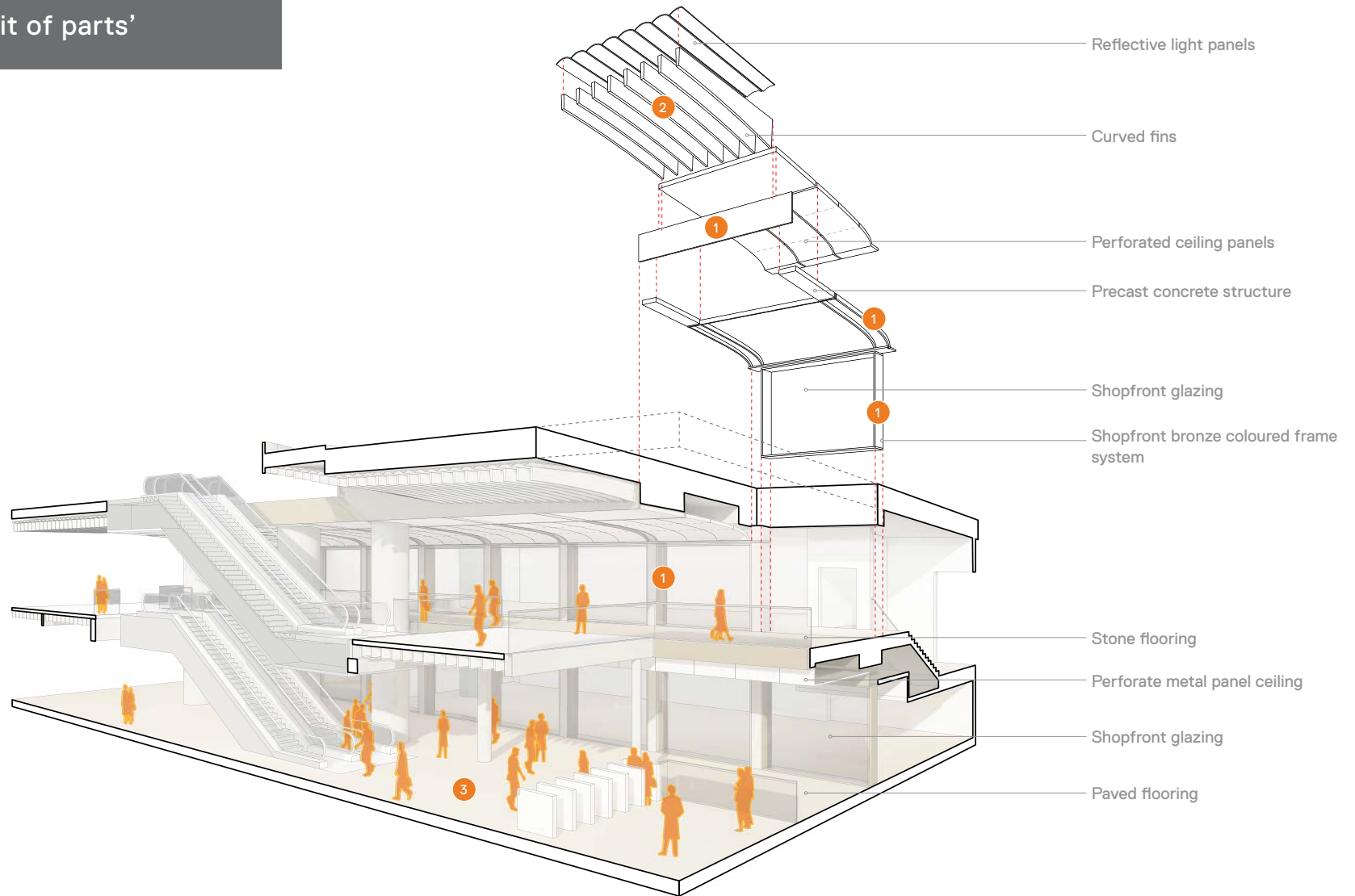
High Quality Framing



Toplit Ceiling

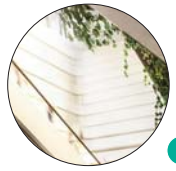


Paved Flooring



A high quality modular 'kit of parts'

The metro experience



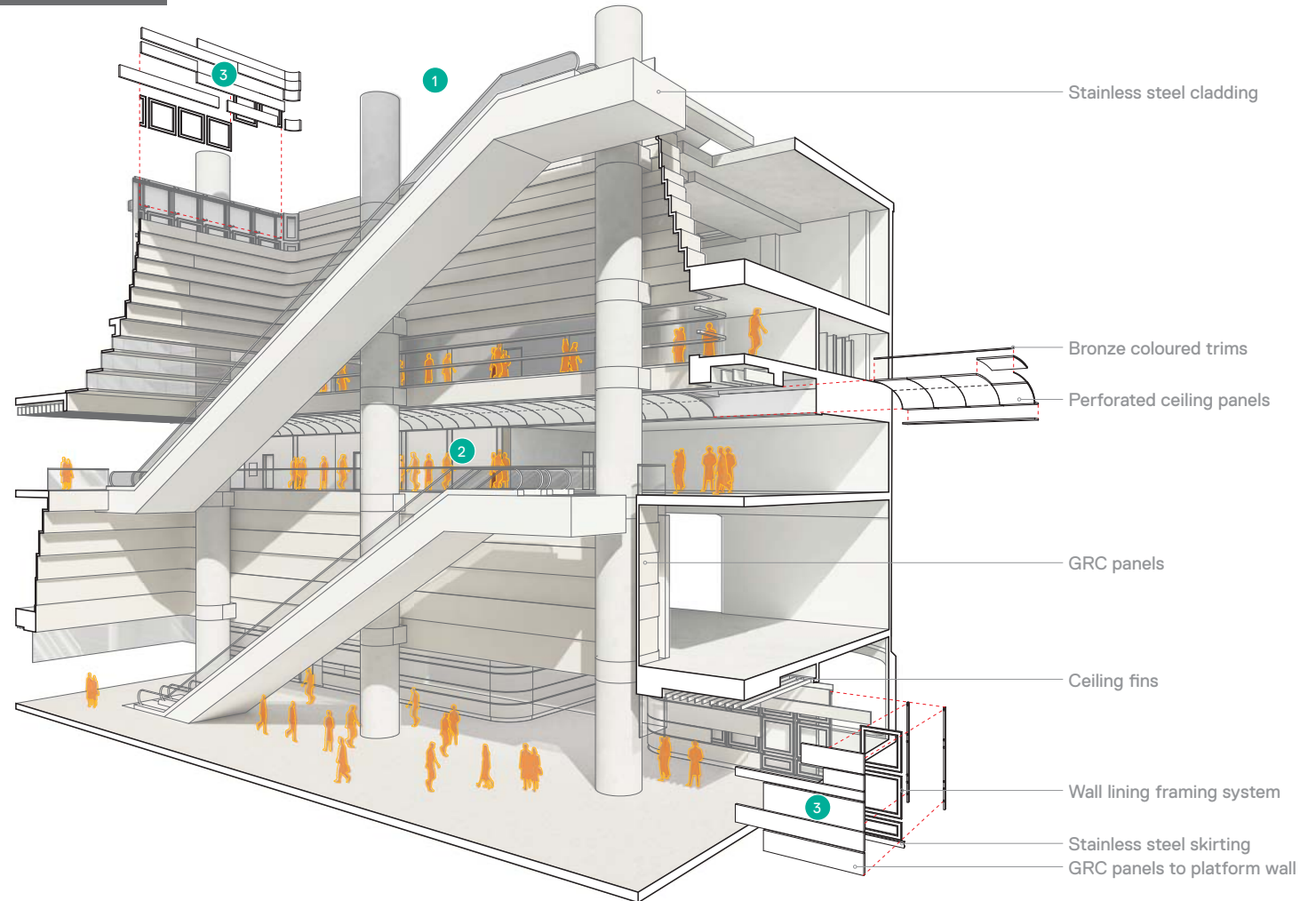
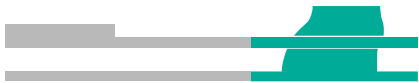
Natural Air + Light



Bronzed Framing



GRC Wall Panels



Customer experience

Arrival



Customers are gently led between
sentinels marking entry



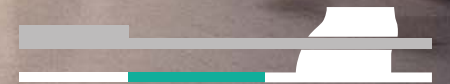
A place to inspire

Emerging into the top lit volume of
the northern atrium

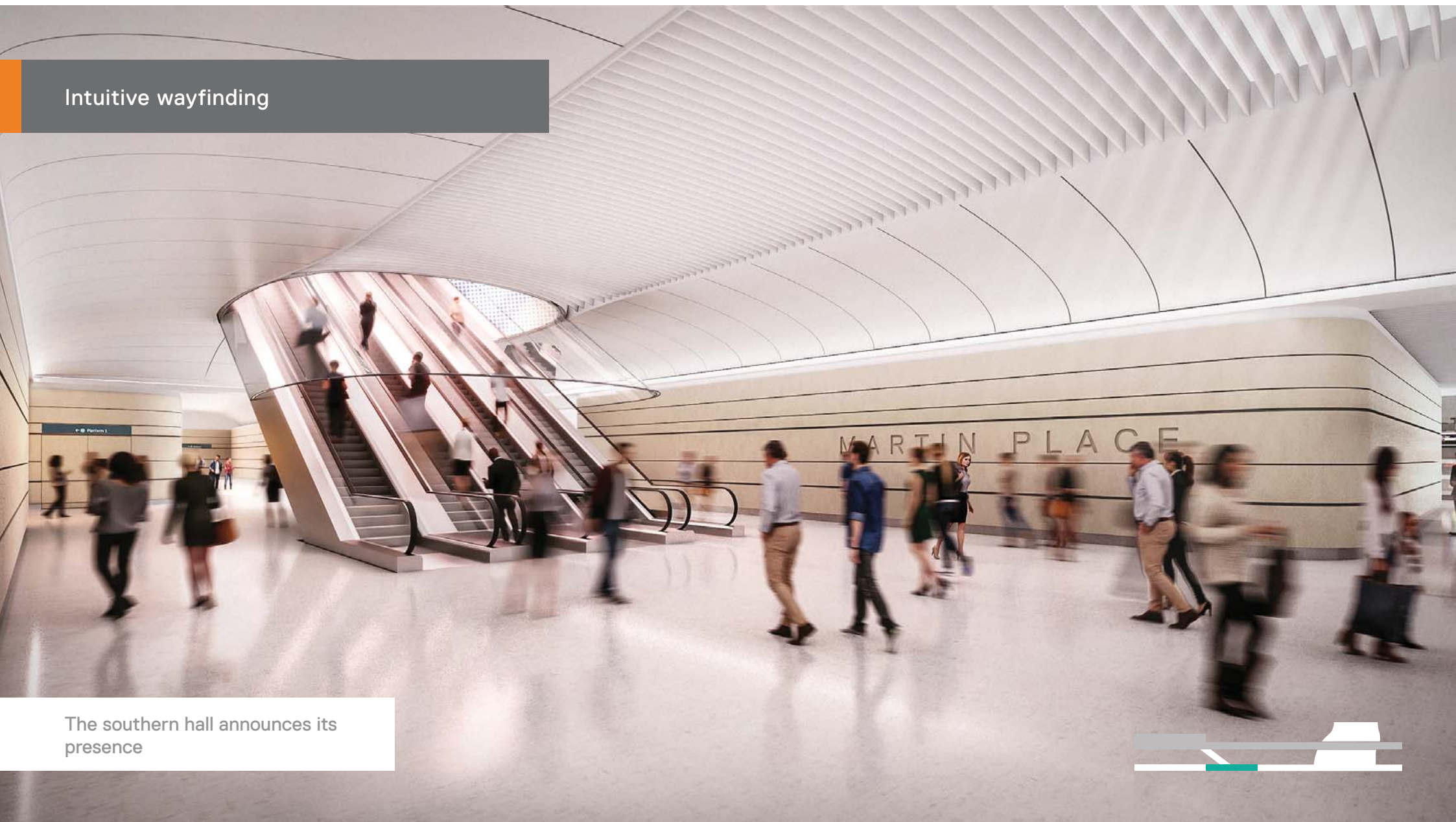


Calm, safe and free of ambiguity

Drawn to the centre where light leads
the way



Intuitive wayfinding

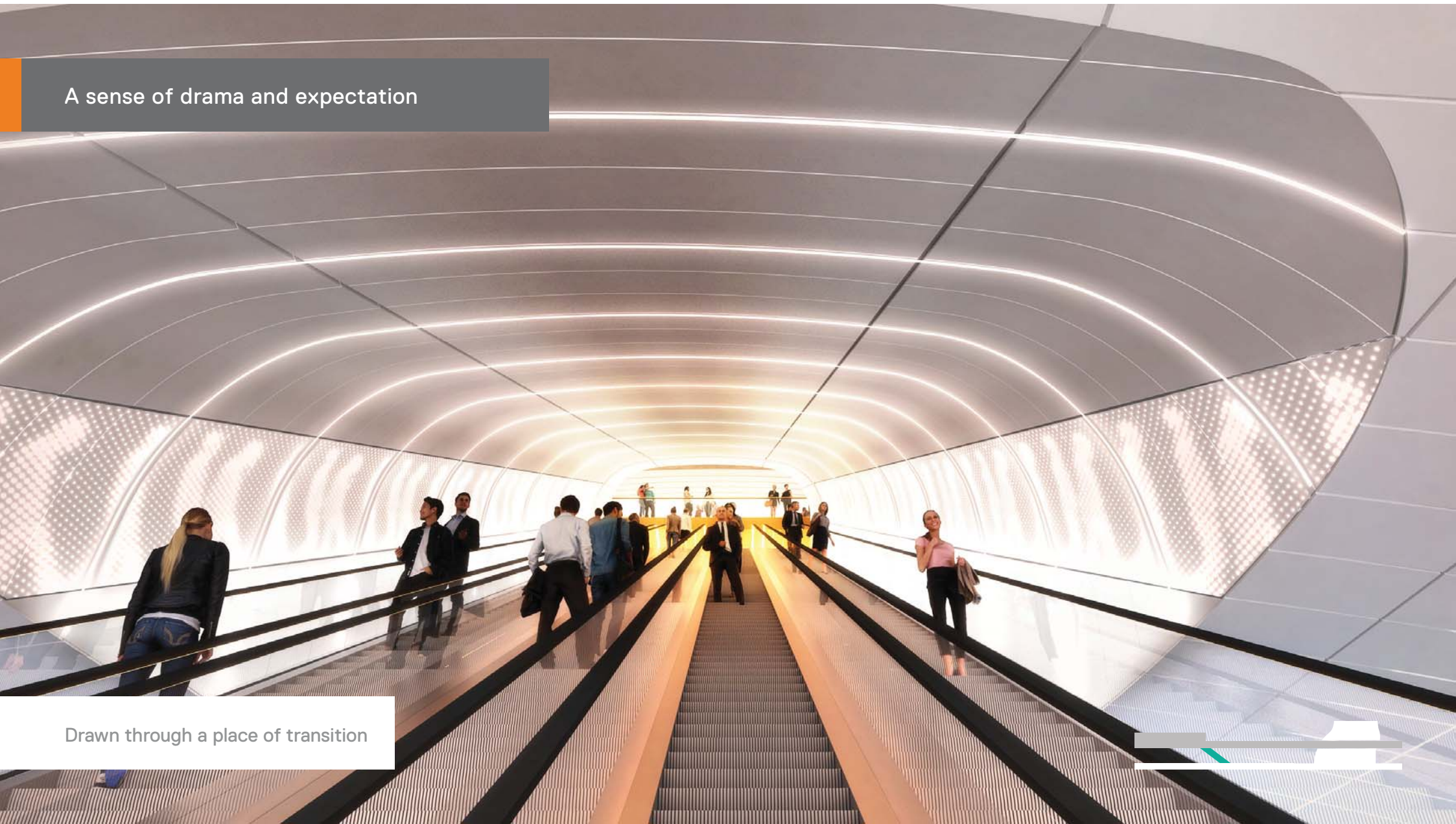


The southern hall announces its presence



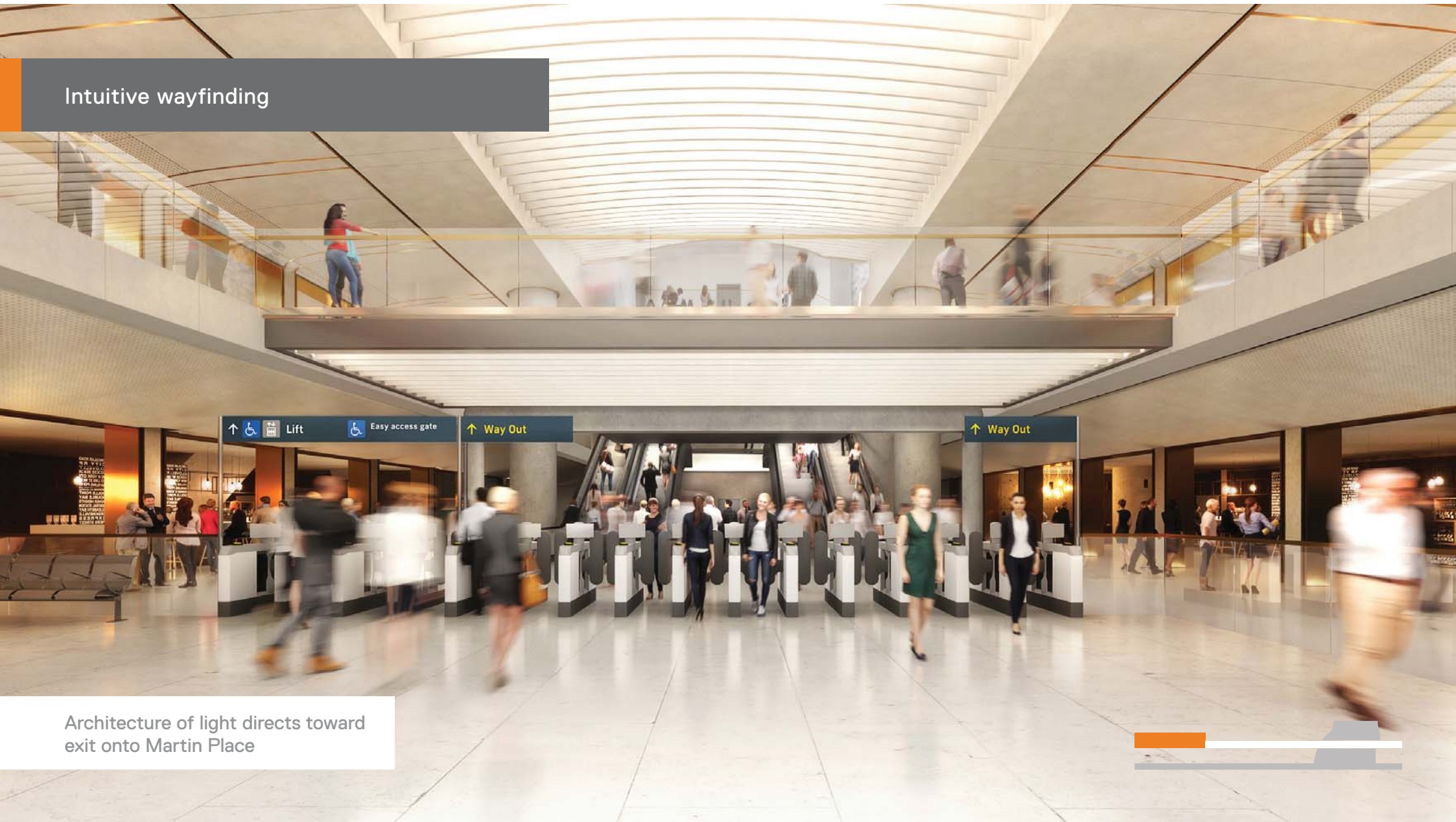
A sense of drama and expectation

Drawn through a place of transition



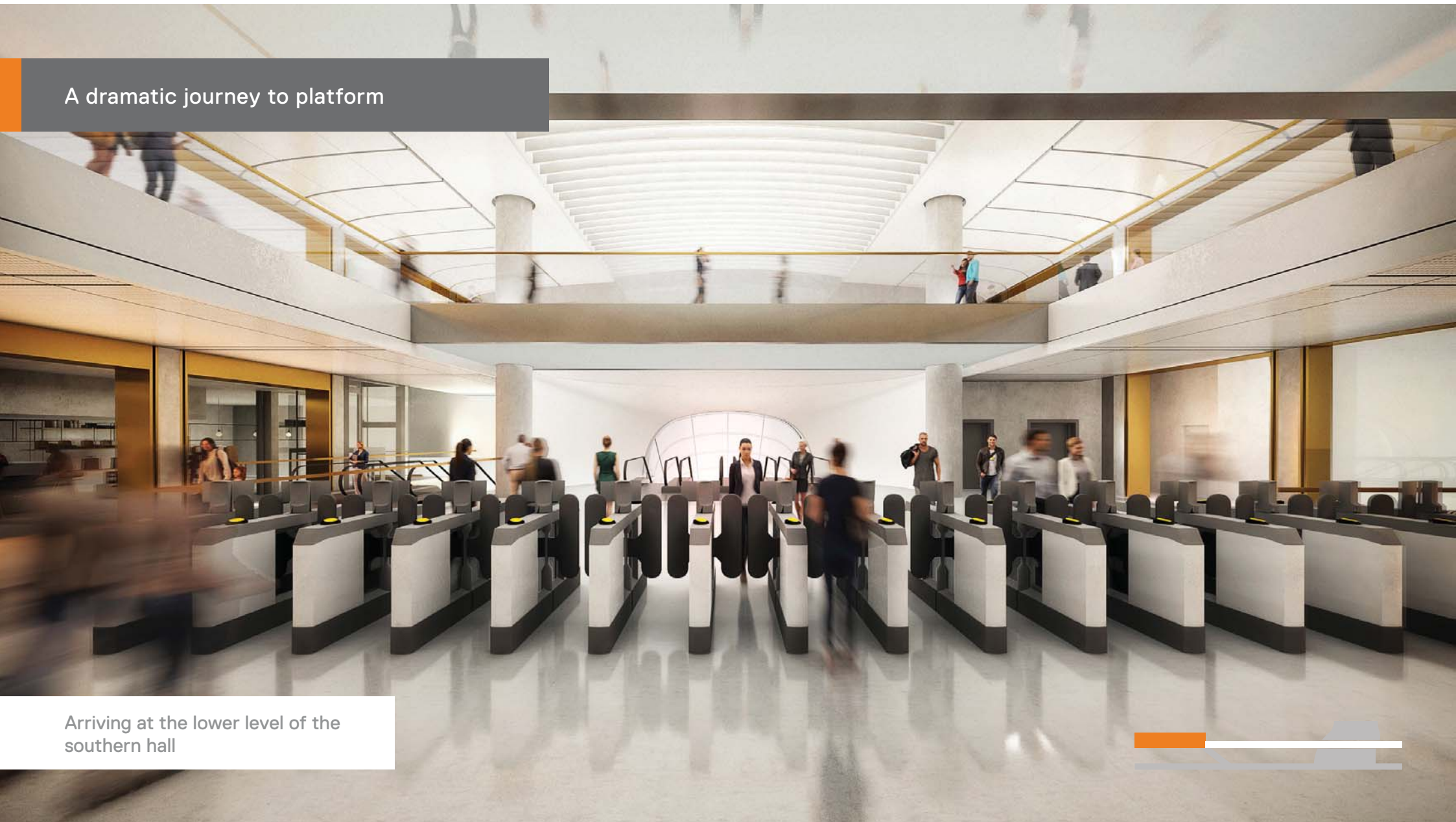
Intuitive wayfinding

Architecture of light directs toward exit onto Martin Place



A dramatic journey to platform

Arriving at the lower level of the
southern hall



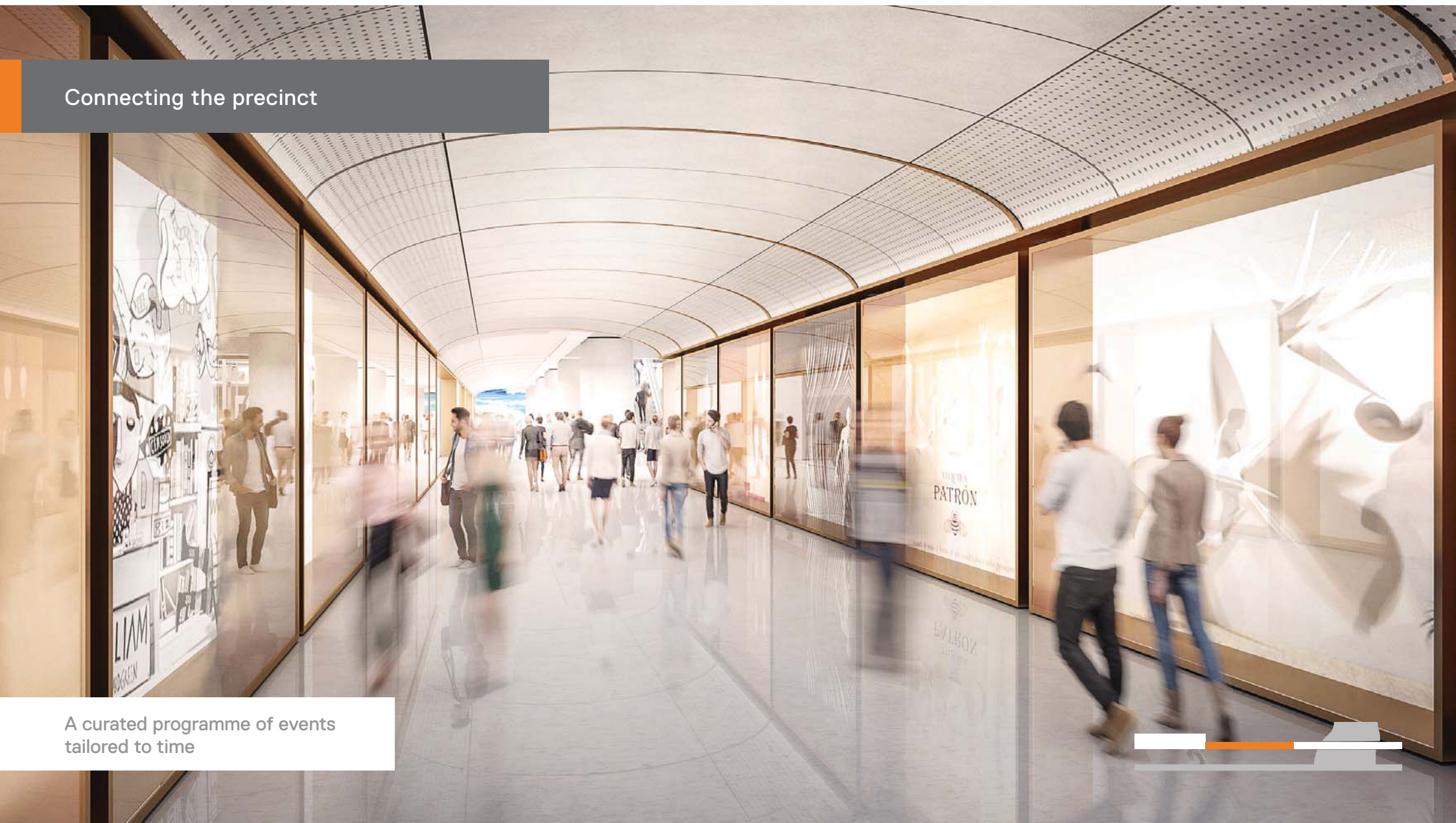


A market hall destination

Station identity is drawn from its relationship with Martin Place above

Connecting the precinct

A curated programme of events
tailored to time





A sense of drama

Intimate retail opens out to
naturally lit atria



A truly unique human experience

Multiple layers of activity converge
across the northern atrium

Next steps

Potential precinct connections

Aspirational precinct links for future development

- St James Airport link
- Martin Place Station connection
- MLC connection
- Bligh Street link

