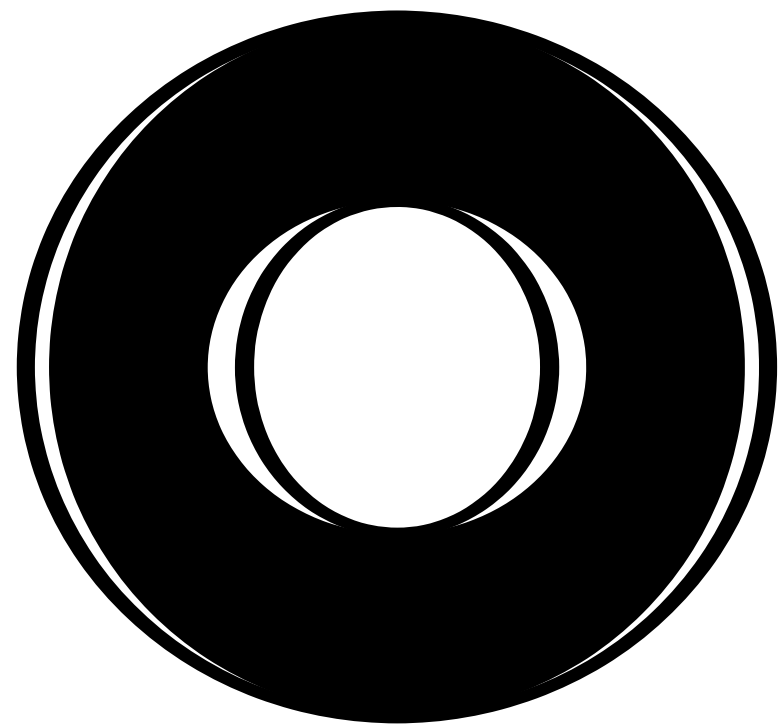


APPENDIX 1



MACQUARIE
BANK

NORTH TOWER

NOT FOR CONSTRUCTION

THIS ARCHITECTURAL PACKAGE DESCRIBES THE NORTH TOWER
ALSO REFER TO GRIMSHAW ARCHITECTS DRAWINGS FOR METRO
STATION AND TZANNES ARCHITECTS DRAWINGS FOR SOUTH TOWER

ARCHITECTURAL DOCUMENT LIST

Index	
<i>Introduction</i>	
CSWSMP-MAC-SMN-AT-DRG-DA-000000	Cover Sheet
Precinct	
1:500	
CSWSMP-MAC-SMN-AT-DRG-DA-109805	Location Plan
CSWSMP-MAC-SMN-AT-DRG-DA-109806	Site Plan
CSWSMP-MAC-SMN-AT-DRG-DA-109808	Precinct Plan
CSWSMP-MAC-SMN-AT-DRG-DA-159801	Precinct Section


General Arrangements	
<i>Plans</i>	
1:200	
CSWSMP-MAC-SMN-AT-DRG-DA-300000	Level 00 Ground Plan
CSWSMP-MAC-SMN-AT-DRG-DA-300100	Level 01 Plan
CSWSMP-MAC-SMN-AT-DRG-DA-300200	Level 02 Plan
CSWSMP-MAC-SMN-AT-DRG-DA-300300	Level 03 Plan
CSWSMP-MAC-SMN-AT-DRG-DA-300400	Level 04 Plan
CSWSMP-MAC-SMN-AT-DRG-DA-300500	Level 05 Plan
CSWSMP-MAC-SMN-AT-DRG-DA-300600	Level 06 Plan
CSWSMP-MAC-SMN-AT-DRG-DA-300700	Level 07 Plan
CSWSMP-MAC-SMN-AT-DRG-DA-300800	Level 08 Plan
CSWSMP-MAC-SMN-AT-DRG-DA-300900	Level 09 Plan
CSWSMP-MAC-SMN-AT-DRG-DA-301000	Level 10 Plan
CSWSMP-MAC-SMN-AT-DRG-DA-301100	Level 11 Plan
CSWSMP-MAC-SMN-AT-DRG-DA-301200	Level 12 Plan
CSWSMP-MAC-SMN-AT-DRG-DA-301300	Level 13 Plan
CSWSMP-MAC-SMN-AT-DRG-DA-301400	Level 14 Plan
CSWSMP-MAC-SMN-AT-DRG-DA-301500	Level 15 Plan
CSWSMP-MAC-SMN-AT-DRG-DA-301600	Level 16 Plan
CSWSMP-MAC-SMN-AT-DRG-DA-301700	Level 17 Plan
CSWSMP-MAC-SMN-AT-DRG-DA-301800	Level 18 Plan
CSWSMP-MAC-SMN-AT-DRG-DA-301900	Level 19 Plan

General Arrangements	
<i>Plans</i>	
1:200	
CSWSMP-MAC-SMN-AT-DRG-DA-308000	Level LG Lower Ground Plan
CSWSMP-MAC-SMN-AT-DRG-DA-308100	Level B1 Plan
CSWSMP-MAC-SMN-AT-DRG-DA-308200	Level B2 Plan
CSWSMP-MAC-SMN-AT-DRG-DA-308300	Level B3 Plan
CSWSMP-MAC-SMN-AT-DRG-DA-308400	Level B4 Plan
CSWSMP-MAC-SMN-AT-DRG-DA-308500	Level B5 Plan
CSWSMP-MAC-SMN-AT-DRG-DA-391000	Landscape Plan

Elevations	
1:250 1:125	
CSWSMP-MAC-SMN-AT-DRG-DA-409900	East Elevation - Tower
CSWSMP-MAC-SMN-AT-DRG-DA-409901	North Elevation - Tower
CSWSMP-MAC-SMN-AT-DRG-DA-409902	West Elevation - Tower
CSWSMP-MAC-SMN-AT-DRG-DA-409903	South Elevation - Tower
Sections	
1:250	
CSWSMP-MAC-SMN-AT-DRG-DA-509900	North-South Section
CSWSMP-MAC-SMN-AT-DRG-DA-509910	East-West Section
CSWSMP-MAC-SMN-AT-DRG-DA-519902	East-West Section

Schedules & Reports	
CSWSMP-MAC-SMN-AT-SCH-909900	North Tower Area Schedule
CSWSMP-MAC-SMA-AT-DRE-000120	North Tower Design Report

Rev	App	Ckd	Revision or reason for issue	Date	Legend
A	PB	PVR	Stage 2 DA Draft	29-06-18	
B	PB	PVR	Stage 2 DA Draft	06-07-18	
C	PB	PVR	Stage 2 DA Draft	18-07-18	
D	PB	PVR	Stage 2 DA	03-08-18	
E	PB	PVR	Stage 2 DA	07-08-18	
F	PB	PVR	Stage 2 DA	10-08-18	
G	PB	PVR	Stage 2 DA	13-08-18	
H	PB	PVR	Stage 2 DA	22-08-18	

 CSLI Areas (not for approval)

CSLI detail is indicative and subject to separate approval.

Final OSD detail on station levels is subject to issue of the relevant construction certificate and approved Station Design and Precinct Plan.

Scale / North Point



General Notes

Do not scale from drawing. Use marked dimensions.To be read in conjunction with all other Consultant's drawings.The Architect to be immediately notified of any discrepancies. Copyright on this drawing retained by the Architect.

Notes

This architectural package describes the North Tower. Refer to Grimshaw for Metro and Tzannes for South Tower

Disclaimer

Street trees, furniture and other public domain elements within the precinct are indicative only and are subject to relevant approvals and detailed coordination with new and existing underground utilities and infrastructure.

Authoring Organisation

GRIMSHAW

Grimshaw
Level 2, 333 George Street, Sydney
New South Wales 2000 Australia

Telephone ++ +61 2 9253 0200
Email info@grimshaw-architects.com

Architect

**JPW
JOHNSON PILTON WALKER**

Johnson Pilton Walker Pty Ltd ACN 095 778 886
Level 10 Plaza Building Australia Square 95 Pitt Street Sydney
New South Wales 2000 Australia

Telephone +61 2 9259 5900
Email jpw@jpw.com.au

Project Title

**SYDNEY METRO MARTIN PLACE -
integrated station development**



Client
Macquarie Group Ltd
50 Martin Place, Sydney
New South Wales 2000 Australia

Telephone +61 2 8232 3333
Email: www.macquarie.com

Drawing Title

**SYDNEY METRO - MARTIN PLACE
COVER PAGE
DRAWING LIST**

Status

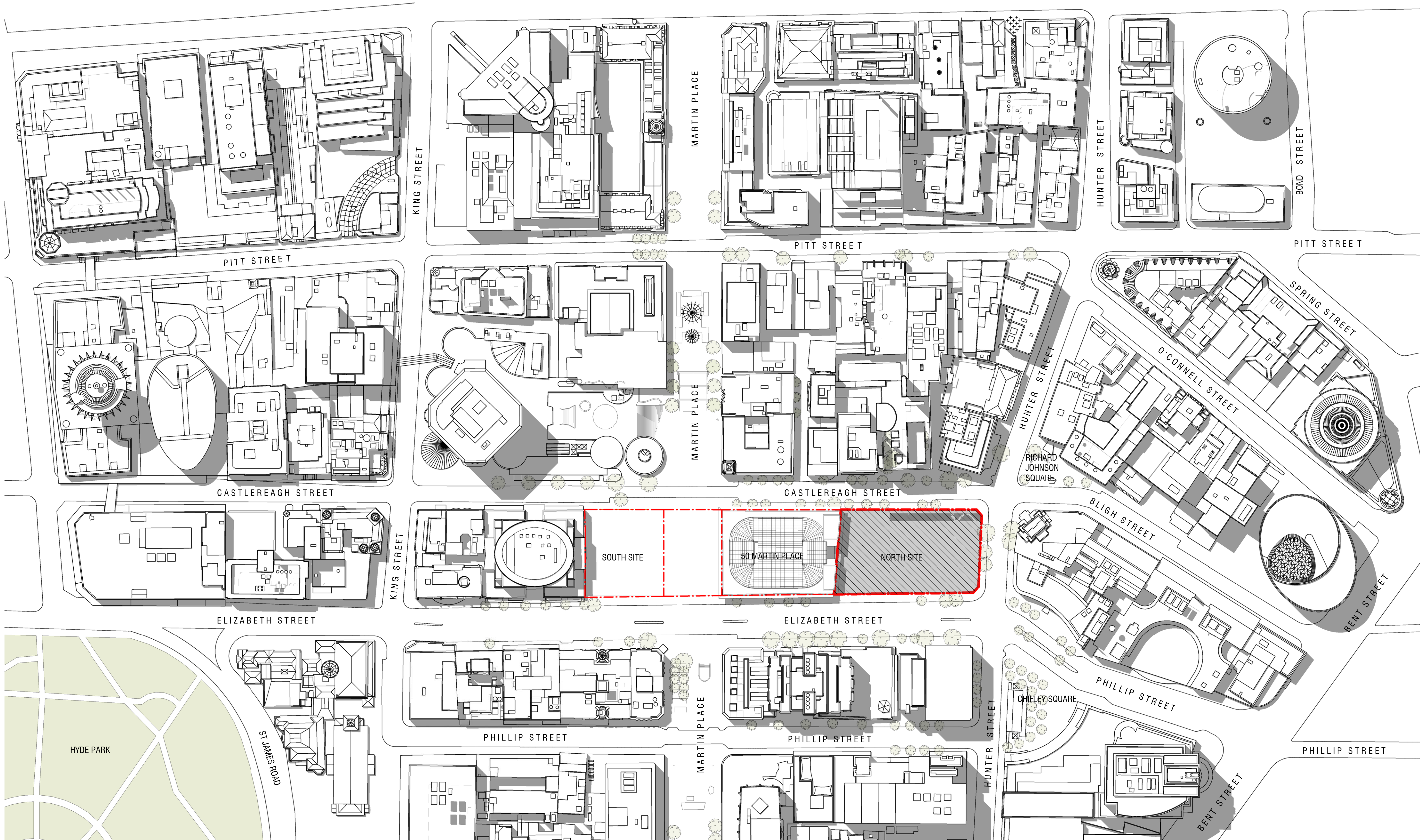
STAGE II SSDA

Drawing Number

CSWSMP-MAC-SMN-AT-DRG-DA-000000

Revision

H



Rev	App	Ckd	Revision or reason for issue	Date
0	AC	MC	STAGE II SSDA - DRAFT ISSUE	29.06.2018
1	AC	MC	STAGE II SSDA - DRAFT ISSUE	30.07.2018
2	AC	MC	STAGE II SSDA - DRAFT ISSUE	03.08.2018
3	AC	MC	STAGE II SSDA - DRAFT ISSUE	09.08.2018
A	AC	MC	STAGE II SSDA - DRAFT ISSUE	10.08.2018
B	AC	MC	STAGE II SSDA	23.08.2018

Legend
CSI Areas (not for approval)
Site Boundary

Scale / North Point

1:1000 @ A1, 1:2000 @ A3

0 10 20 30 50

General Notes

Do not scale from drawing. Use marked dimensions. To be read in conjunction with all other Consultant's drawings. The Architect to be immediately notified of any discrepancies. Copyright on this drawing retained by the Architect.

Notes

This architectural package describes metro-related areas. Refer to Tzannes for South OSD and JPW for North OSD.

CSI detail is indicative and subject to separate approval.

Final OSD detail on station levels is subject to issue of the relevant construction certificate and approved Station Design and Precinct Plan

Street trees, furniture, and other public domain elements within the precinct are indicative only and are subject to relevant approvals and detailed coordination with new and existing underground utilities and infrastructure.

Authoring Organisation

GRIMSHAW

Grimshaw
Level 2, 333 George Street, Sydney
New South Wales 2000 Australia

Telephone +61 2 9253 0200
Email info@grimshaw-architects.com

Architect

**JPW
JOHNSON PILTON WALKER**

Johnson Pilton Walker Pty Ltd ACN 095 778 886
Level 10 Plaza Building Australia Square 95 Pitt Street Sydney
New South Wales 2000 Australia

Telephone +61 2 9259 5900
Email jpww@jpww.com.au

Project Title

**SYDNEY METRO MARTIN PLACE -
integrated station development**

Client

Macquarie Group Ltd
50 Martin Place, Sydney
New South Wales 2000 Australia

Telephone +61 2 8232 3333
Email: www.macquarie.com

Drawing Title

LOCATION PLAN

Status

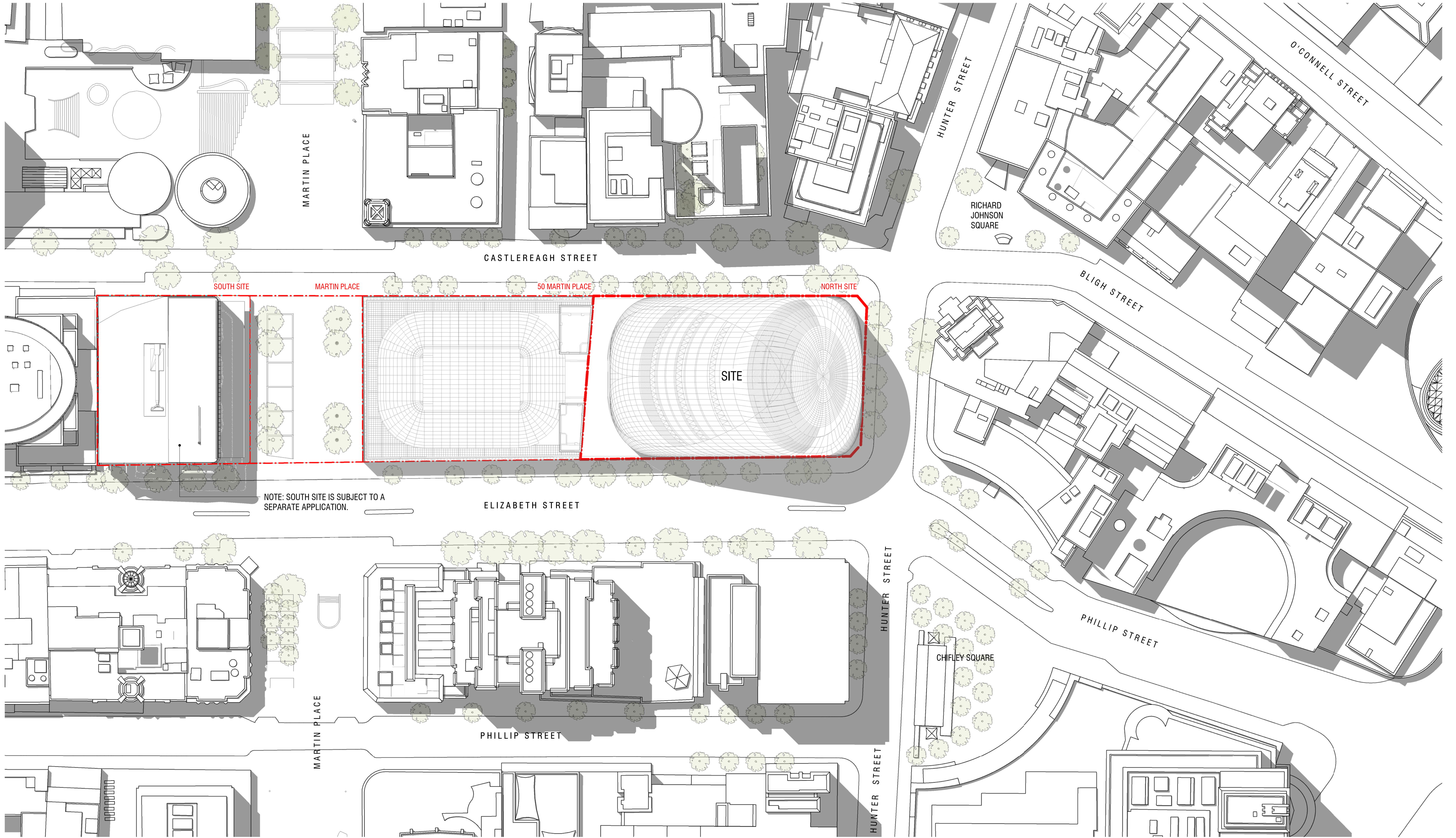
STAGE II SSDA

Drawing Number

CSWSMP- MAC- SMN- AT- DRG- DA- 109805 _B

Revision

B



Rev	App	Cxd	Revision or reason for issue	Date
0	AC	MC	STAGE II SSDA - DRAFT ISSUE	29.06.2018
1	AC	MC	STAGE II SSDA - DRAFT ISSUE	30.07.2018
2	AC	MC	STAGE II SSDA - DRAFT ISSUE	03.08.2018
3	AC	MC	STAGE II SSDA - DRAFT ISSUE	09.08.2018
A	AC	MC	STAGE II SSDA - DRAFT ISSUE	10.08.2018
B	AC	MC	STAGE II SSDA	23.08.2018

Legend
CSSI Areas (not for approval)
Site Boundary

Scale / North Point

1:500 @ A1, 1:1000 @ A3

0 5 10 15 25

General Notes

Do not scale from drawing. Use marked dimensions. To be read in conjunction with all other Consultant's drawings. The Architect to be immediately notified of any discrepancies. Copyright on this drawing retained by the Architect.

Notes

This architectural package describes metro-related areas. Refer to Tzannes for South OSD and JPW for North OSD.

CSSI detail is indicative and subject to separate approval.

Final OSD detail on station levels is subject to issue of the relevant construction certificate and approved Station Design and Precinct Plan

Street trees, furniture, and other public domain elements within the precinct are indicative only and are subject to relevant approvals and detailed coordination with new and existing underground utilities and infrastructure.

Authoring Organisation

GRIMSHAW

Grimshaw
Level 2, 333 George Street, Sydney
New South Wales 2000 Australia

Telephone +61 2 9253 0200
Email info@grimshaw-architects.com

Architect

**JPW
JOHNSON PILTON WALKER**

Johnson Pilton Walker Pty Ltd ACN 095 778 886
Level 10 Plaza Building Australia Square 95 Pitt Street Sydney
New South Wales 2000 Australia

Telephone +61 2 9259 5900
Email jpw@jpw.com.au

Project Title

**SYDNEY METRO MARTIN PLACE -
integrated station development**

Client

Macquarie Group Ltd
50 Martin Place, Sydney
New South Wales 2000 Australia

Telephone +61 2 8232 3333
Email: www.macquarie.com



Drawing Title

SITE PLAN - ROOF PLAN

Status

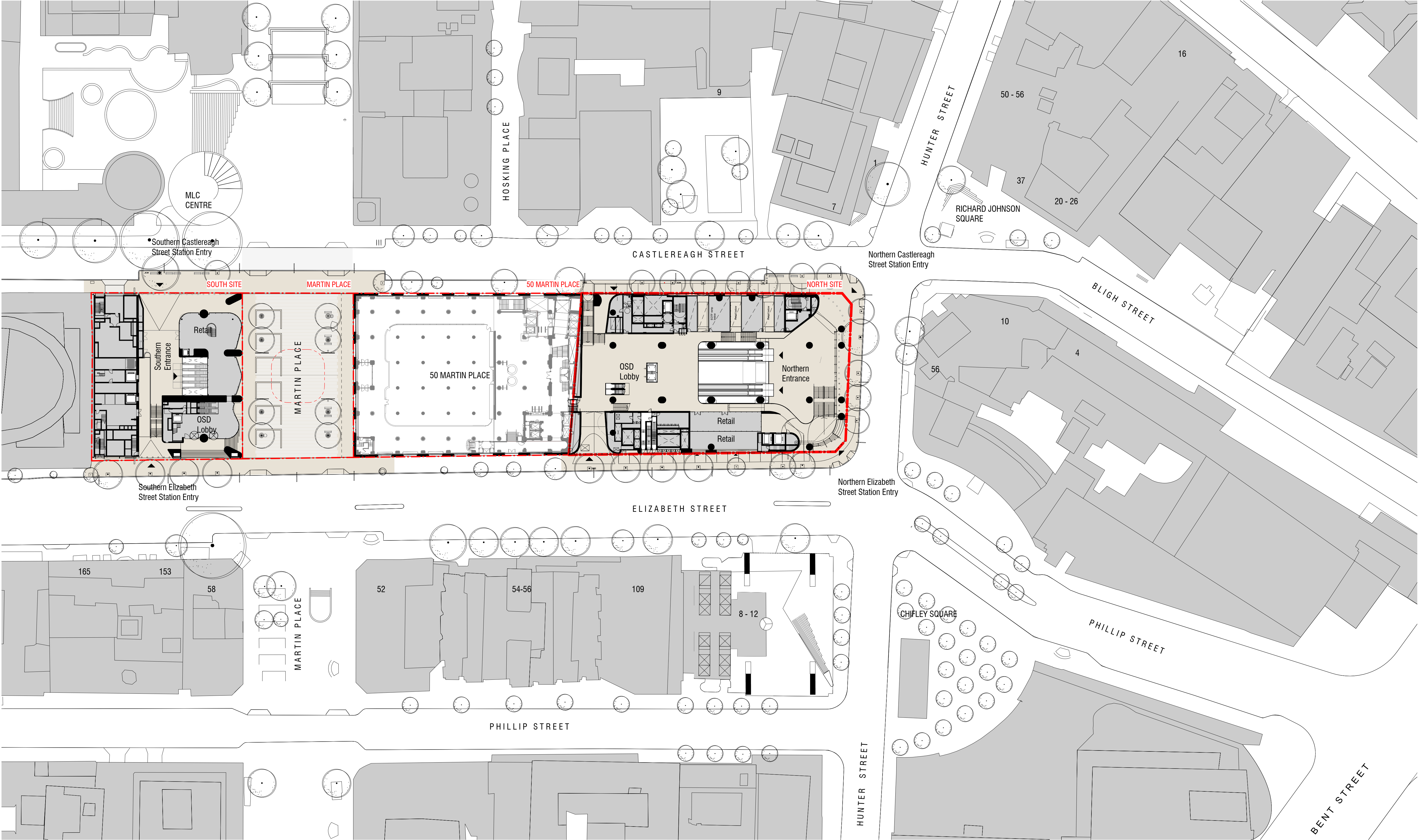
STAGE II SSDA

Drawing Number

CSWSMP- MAC- SMN- AT- DRG- DA- 109806_B

Revision

B



NOTE: CSSI demarcation hatching not shown on this drawing to improve legibility at this scale

Rev	App	Ckd	Revision or reason for issue	Date
0	AC	MC	STAGE II SSDA - DRAFT ISSUE	29.06.2018
1	AC	MC	STAGE II SSDA - DRAFT ISSUE	30.07.2018
2	AC	MC	STAGE II SSDA - DRAFT ISSUE	03.08.2018
3	AC	MC	STAGE II SSDA - DRAFT ISSUE	07.08.2018
4	AC	MC	STAGE II SSDA - DRAFT ISSUE	08.08.2018
5	AC	MC	STAGE II SSDA - DRAFT ISSUE	09.08.2018
A	AC	MC	STAGE II SSDA - DRAFT ISSUE	10.08.2018
B	AC	MC	STAGE II SSDA	23.08.2018

Legend
CSSI Areas (not for approval)
Site Boundary

Scale / North Point

1:500 @ A1, 1:1000 @ A3

0 5 10 15 25

General Notes

Do not scale from drawing. Use marked dimensions. To be read in conjunction with all other Consultant's drawings. The Architect to be immediately notified of any discrepancies. Copyright on this drawing retained by the Architect.

Notes

This architectural package describes metro-related areas. Refer to Tzannes for South OSD and JPW for North OSD.

CSSI detail is indicative and subject to separate approval.

Final OSD detail on station levels is subject to issue of the relevant construction certificate and approved Station Design and Precinct Plan

Street trees, furniture, and other public domain elements within the precinct are indicative only and are subject to relevant approvals and detailed coordination with new and existing underground utilities and infrastructure.

Authoring Organisation

GRIMSHAW

Grimshaw
Level 2, 333 George Street, Sydney
New South Wales 2000 Australia
Telephone +61 2 9253 0200
Email info@grimshaw-architects.com

Architect

**JPW
JOHNSON PILTON WALKER**

Johnson Pilton Walker Pty Ltd ACN 095 778 886
Level 10 Plaza Building Australia Square 95 Pitt Street Sydney
New South Wales 2000 Australia
Telephone +61 2 9259 5900
Email jpww@jpww.com.au

Project Title

**SYDNEY METRO MARTIN PLACE -
integrated station development**

Client
Macquarie Group Ltd
50 Martin Place, Sydney
New South Wales 2000 Australia
Telephone +61 2 8232 3333
Email: www.macquarie.com

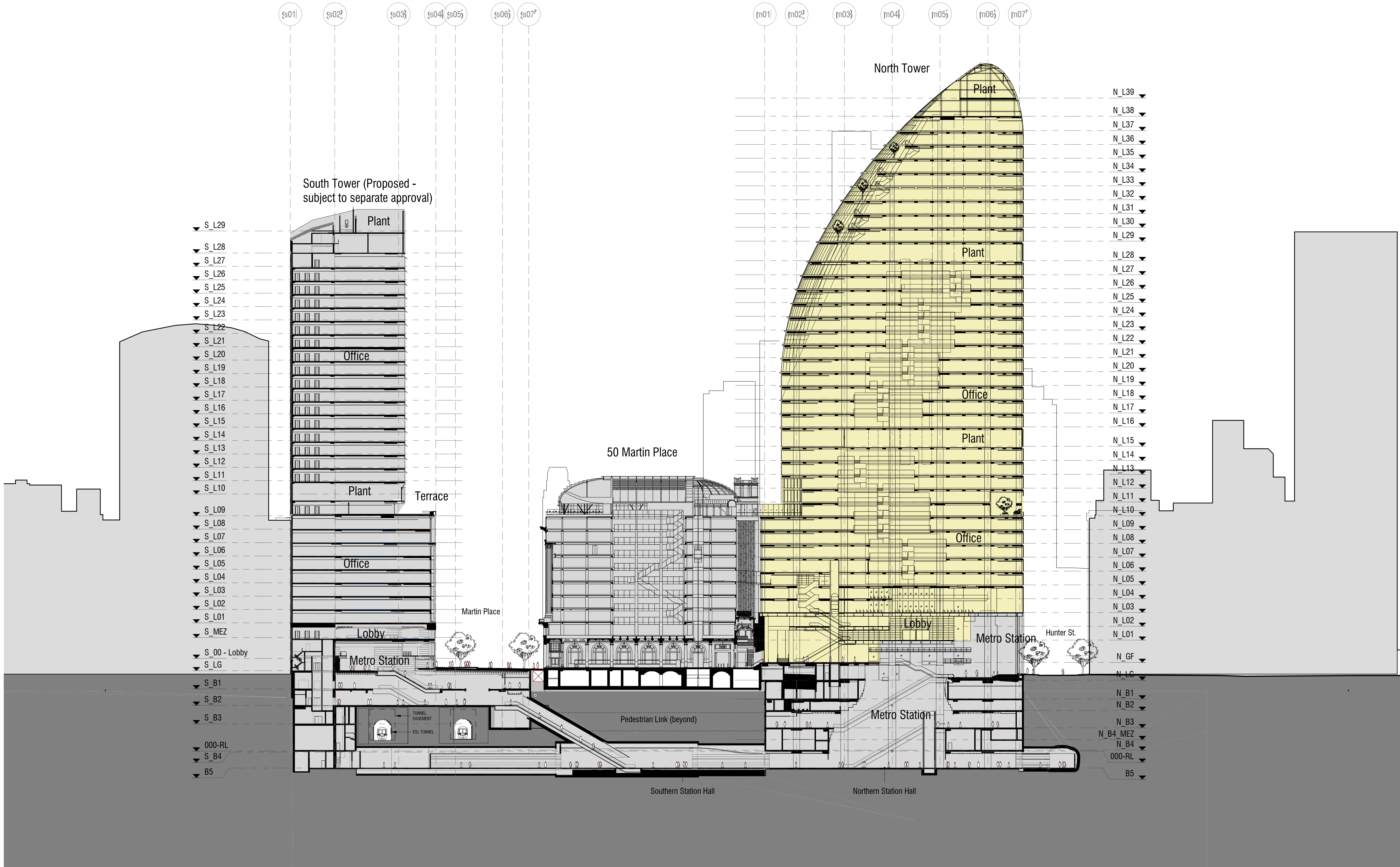
Drawing Title

PRECINCT PLAN - GROUND PLANE

Status
STAGE II SSDA

Drawing Number
CSWSMP- MAC- SMN- AT- DRG- DA- 109808_B

Revision
B



Rev	App	Ckd	Revision or reason for issue	Date
0	AC	MC	STAGE II SSDA - DRAFT ISSUE	29.06.2018
1	AC	MC	STAGE II SSDA - DRAFT ISSUE	30.07.2018
2	AC	MC	STAGE II SSDA - DRAFT ISSUE	03.08.2018
3	AC	MC	STAGE II SSDA - DRAFT ISSUE	07.08.2018
4	AC	MC	STAGE II SSDA - DRAFT ISSUE	09.08.2018
A	AC	MC	STAGE II SSDA - DRAFT ISSUE	10.08.2018
B	AC	MC	STAGE II SSDA - DRAFT ISSUE	13.08.2018
C	AC	MC	STAGE II SSDA - DRAFT ISSUE	14.08.2018
D	AC	MC	STAGE II SSDA - DRAFT ISSUE	15.08.2018
E	AC	MC	STAGE II SSDA	23.08.2018

Legend

North Tower (indicative)

Scale / North Point

1:500 @ A1, 1:1000 @ A3

General Notes

Do not scale from drawing. Use marked dimensions. To be read in conjunction with all other Consultant's drawings. The Architect to be immediately notified of any discrepancies. Copyright on this drawing retained by the Architect.

Notes

This architectural package describes metro-related areas. Refer to Tzannes for South OSD and JPW for North OSD.

CSI detail is indicative and subject to separate approval.

Final OSD detail on station levels is subject to issue of the relevant construction certificate and approved Station Design and Precinct Plan

Street trees, furniture, and other public domain elements within the precinct are indicative only and are subject to relevant approvals and detailed coordination with new and existing underground utilities and infrastructure.

Authoring Organisation

GRIMSHAW

Grimshaw
Level 2, 333 George Street, Sydney
New South Wales 2000 Australia

Telephone +61 2 9253 0200
Email info@grimshaw-architects.com

Architect

**JPW
JOHNSON PILTON WALKER**

Johnson Pilton Walker Pty Ltd ACN 095 778 886
Level 10 Plaza Building Australia Square 95 Pitt Street Sydney
New South Wales 2000 Australia

Telephone +61 2 9259 5900
Email jpww@jpww.com.au

Project Title

**SYDNEY METRO MARTIN PLACE -
integrated station development**



Client
Macquarie Group Ltd
50 Martin Place, Sydney
New South Wales 2000 Australia

Telephone +61 2 8232 3333
Email: www.macquarie.com

Drawing Title

PRECINCT SECTION

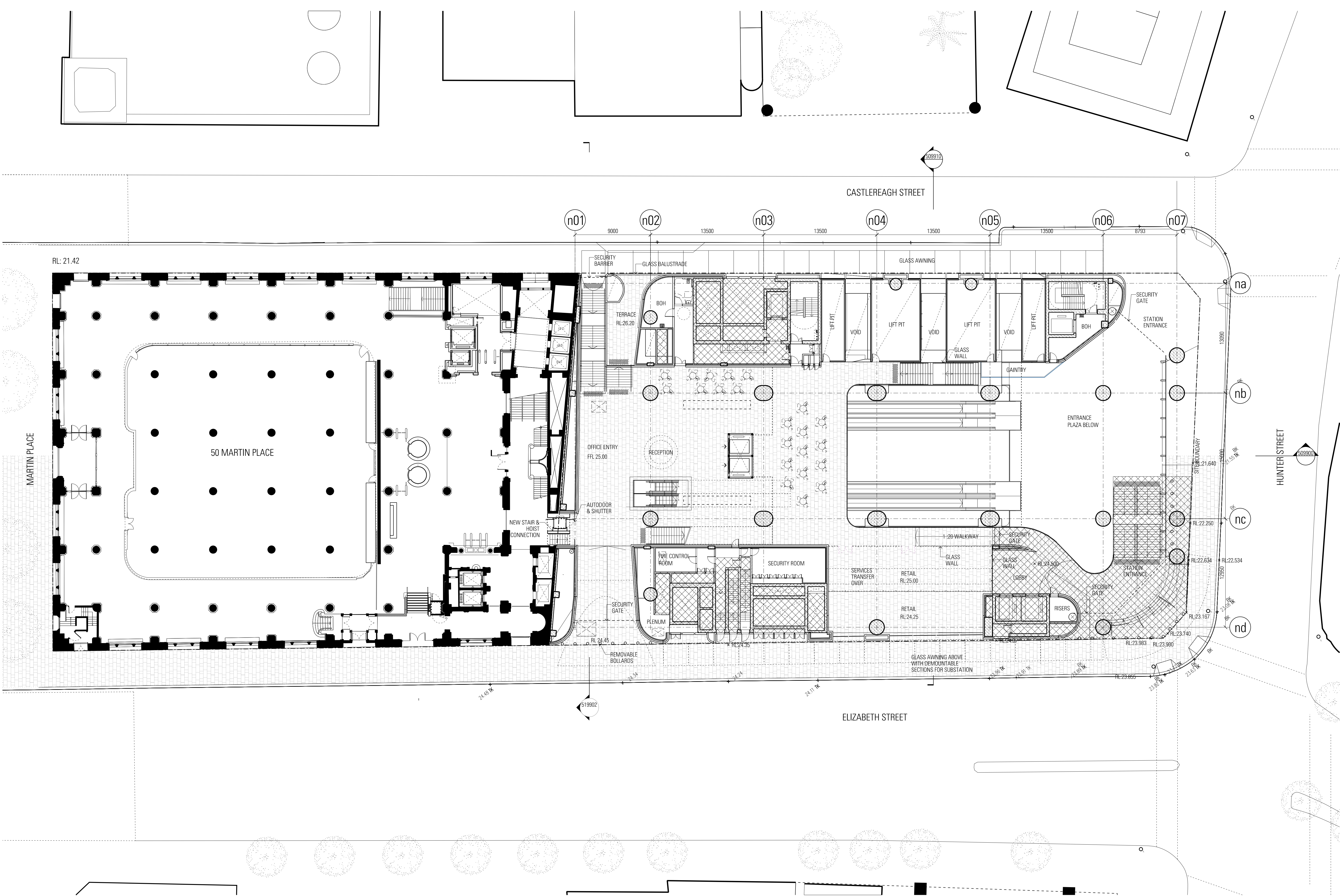
Status
STAGE II SSDA

Drawing Number

CSWSMP- MAC- SMN- AT- DRG- DA- 159801_E

Revision

E



C:\SW\SMP-MAC-SMN-AT-DRG-DA-300000.dgn
14/10/21 PM

Rev	App	Ckd	Revision or reason for issue	Date	Legend
A	PB	PVR	Stage 2 DA Draft	29-06-18	
B	PB	PVR	Stage 2 DA Draft	08-07-18	
C	PB	PVR	Stage 2 DA Draft	18-07-18	
D	PB	PVR	Stage 2 DA	03-08-18	
E	PB	PVR	Stage 2 DA	07-08-18	
F	PB	PVR	Stage 2 DA	08-08-18	
G	PB	PVR	Stage 2 DA	22-08-18	
H	PB	PVR	Stage 2 DA	23-08-18	
I	PB	PVR	Stage 2 DA Response to Submissions	21-02-19	

CSSE Areas (not for approval)

CSSE detail is indicative and subject to separate approval.

Final OSD detail on station levels is subject to issue of the relevant construction certificate and approved Station Design and Precinct Plan.

Scale / North Point

1:200 @ A1, 1:400 @ A3

General Notes

Do not scale from drawing. Use marked dimensions. To be read in conjunction with all other Consultant's drawings. The Architect to be immediately notified of any discrepancies. Copyright on this drawing retained by the Architect.

Notes

This architectural package describes the North Tower. Refer to Grimshaw for Metro and Tzannes for South Tower

Disclaimer

Street trees, furniture and other public domain elements within the precinct are indicative only and are subject to relevant approvals and detailed coordination with new and existing underground utilities and infrastructure.

Authoring Organisation

GRIMSHAW

Grimshaw
Level 2, 333 George Street, Sydney
New South Wales 2000 Australia

Telephone + +61 2 9253 0200
Email info@grimshaw-architects.com

Architect

**JPW
JOHNSON PILTON WALKER**

Johnson Pilton Walker Pty Ltd ACN 095 778 886
Level 10 Plaza Building Australia Square 95 Pitt Street Sydney
New South Wales 2000 Australia

Telephone +61 2 9259 5900
Email jpww@jpww.com.au

Project Title

**SYDNEY METRO MARTIN PLACE -
integrated station development**



Client

Macquarie Group Ltd
50 Martin Place, Sydney
New South Wales 2000 Australia

Telephone +61 2 8232 3333
Email: www.macquarie.com

Drawing Title

**SYDNEY METRO - MARTIN PLACE
GROUND PLAN - ELIZABETH STREET
GENERAL ARRANGEMENT**

Status

STAGE II SSDA

Drawing Number

CWSMP-MAC-SMN-AT-DRG-DA-300000

Revision

I

Rev	App	Ckd	Revision or reason for issue	Date	Legend
A	PB	PVR	Stage 2 DA Draft	29-06-18	
B	PB	PVR	Stage 2 DA Draft	06-07-18	
C	PB	PVR	Stage 2 DA Draft	18-07-18	
D	PB	PVR	Stage 2 DA	03-08-18	
E	PB	PVR	Stage 2 DA	07-08-18	
F	PB	PVR	Stage 2 DA	23-08-18	
G	PB	PVR	Stage 2 DA	23-08-18	

CSWSI Areas (not for approval)

CSWSI detail is indicative and subject to separate approval.

Final OSD detail on station levels is subject to issue of the relevant construction certificate and approved Station Design and Precinct Plan.

Scale / North Point

1:200 @ A1, 1:400 @ A3

General Notes

Do not scale from drawing. Use marked dimensions. To be read in conjunction with all other Consultant's drawings. The Architect to be immediately notified of any discrepancies. Copyright on this drawing retained by the Architect.

Notes

This architectural package describes the North Tower. Refer to Grimshaw for Metro and Trains for South Tower

Disclaimer

Street trees, furniture and other public domain elements within the precinct are indicative only and are subject to relevant approvals and detailed coordination with new and existing underground utilities and infrastructure.

Authoring Organisation

GRIMSHAW

Grimshaw
Level 2, 333 George Street, Sydney
New South Wales 2000 Australia

Telephone ++ +61 2 9253 0200
Email info@grimshaw-architects.com

Architect

**JPW
JOHNSON PILTON WALKER**

Johnson Pilton Walker Pty Ltd ACN 095 778 886
Level 10 Plaza Building Australia Square 95 Pitt Street Sydney
New South Wales 2000 Australia

Telephone +61 2 9259 5900
Email jpw@jpw.com.au

Project Title

**SYDNEY METRO MARTIN PLACE -
integrated station development**



Client
Macquarie Group Ltd
50 Martin Place, Sydney
New South Wales 2000 Australia

Telephone +61 2 8232 3333
Email: www.macquarie.com

Drawing Title

**SYDNEY METRO - MARTIN PLACE
LEVEL 02 PLAN
GENERAL ARRANGEMENT**

Status Revision

STAGE II SSDA

G

Drawing Number
CSWSMP-MAC-SMN-AT-DRG-DA-300200

Rev	App	Ckd	Revision or reason for issue	Date	Legend
A	PB	PVR	Stage 2 DA Draft	29-06-18	
B	PB	PVR	Stage 2 DA Draft	06-07-18	
C	PB	PVR	Stage 2 DA Draft	18-07-18	
D	PB	PVR	Stage 2 DA	03-08-18	
E	PB	PVR	Stage 2 DA	07-08-18	
F	PB	PVR	Stage 2 DA	08-08-18	
G	PB	PVR	Stage 2 DA	13-08-18	
H	PB	PVR	Stage 2 DA	22-08-18	
I	PB	PVR	Stage 2 DA	23-08-18	

CSWS Areas (not for approval)

CSWS detail is indicative and subject to separate approval.

Final OSD detail on station levels is subject to issue of the relevant construction certificate and approved Station Design and Precinct Plan.

Scale / North Point

1:200 @ A1, 1:400 @ A3

General Notes

Do not scale from drawing. Use marked dimensions. To be read in conjunction with all other Consultant's drawings. The Architect to be immediately notified of any discrepancies. Copyright on this drawing retained by the Architect.

Notes

This architectural package describes the North Tower. Refer to Grimshaw for Metro and Tzannes for South Tower

Disclaimer

Street trees, furniture and other public domain elements within the precinct are indicative only and are subject to relevant approvals and detailed coordination with new and existing underground utilities and infrastructure.

Authoring Organisation

GRIMSHAW

Grimshaw
Level 2, 333 George Street, Sydney
New South Wales 2000 Australia

Telephone ++ +61 2 9253 0200
Email info@grimshaw-architects.com

Architect

**JPW
JOHNSON PILTON WALKER**

Johnson Pilton Walker Pty Ltd ACN 095 778 886
Level 10 Plaza Building Australia Square 95 Pitt Street Sydney
New South Wales 2000 Australia

Telephone +61 2 9259 5900
Email jpw@jpw.com.au

Project Title

**SYDNEY METRO MARTIN PLACE -
integrated station development**



Client
Macquarie Group Ltd
50 Martin Place, Sydney
New South Wales 2000 Australia

Telephone +61 2 8232 3333
Email: www.macquarie.com

Drawing Title

**SYDNEY METRO - MARTIN PLACE
LEVEL 03 PLAN
GENERAL ARRANGEMENT**

Status Revision

STAGE II SSDA I

Drawing Number

CSWSMP-MAC-SMN-AT-DRG-DA-300300

Rev	App	Ckd	Revision or reason for issue	Date	Legend
A	PB	PVR	Stage 2 DA Draft	29-06-18	
B	PB	PVR	Stage 2 DA Draft	06-07-18	
C	PB	PVR	Stage 2 DA Draft	18-07-18	
D	PB	PVR	Stage 2 DA	03-08-18	
E	PB	PVR	Stage 2 DA	07-08-18	
F	PB	PVR	Stage 2 DA	08-08-18	
G	PB	PVR	Stage 2 DA	22-08-18	
H	PB	PVR	Stage 2 DA	23-08-18	

CSWS Areas (not for approval)

CSWS detail is indicative and subject to separate approval.

Final OSD detail on station levels is subject to issue of the relevant construction certificate and approved Station Design and Precinct Plan.

Scale / North Point

1:200 @ A1, 1:400 @ A3

General Notes

Do not scale from drawing. Use marked dimensions. To be read in conjunction with all other Consultant's drawings. The Architect to be immediately notified of any discrepancies. Copyright on this drawing retained by the Architect.

Notes

This architectural package describes the North Tower. Refer to Grimshaw for Metro and Trains for South Tower

Disclaimer

Street trees, furniture and other public domain elements within the precinct are indicative only and are subject to relevant approvals and detailed coordination with new and existing underground utilities and infrastructure.

Authoring Organisation

GRIMSHAW

Grimshaw
Level 2, 333 George Street, Sydney
New South Wales 2000 Australia

Telephone ++ +61 2 9253 0200
Email info@grimshaw-architects.com

Architect

**JPW
JOHNSON PILTON WALKER**

Johnson Pilton Walker Pty Ltd ACN 095 778 886
Level 10 Plaza Building Australia Square 95 Pitt Street Sydney
New South Wales 2000 Australia

Telephone +61 2 9259 5900
Email jpw@jpw.com.au

Project Title

**SYDNEY METRO MARTIN PLACE -
integrated station development**



Client
Macquarie Group Ltd
50 Martin Place, Sydney
New South Wales 2000 Australia

Telephone +61 2 8232 3333
Email: www.macquarie.com

Drawing Title

**SYDNEY METRO - MARTIN PLACE
LEVEL 04 PLAN
GENERAL ARRANGEMENT**

Status Revision

STAGE II SSDA H

Drawing Number

CSWSMP-MAC-SMN-AT-DRG-DA-300400

Rev	App	Ckd	Revision or reason for issue	Date	Legend
A	PB	PVR	Stage 2 DA Draft	29-06-18	
B	PB	PVR	Stage 2 DA Draft	06-07-18	
C	PB	PVR	Stage 2 DA Draft	18-07-18	
D	PB	PVR	Stage 2 DA	03-08-18	
E	PB	PVR	Stage 2 DA	07-08-18	
F	PB	PVR	Stage 2 DA	23-08-18	
G	PB	PVR	Stage 2 DA	23-08-18	

CSWSMP-MAC-SMN-AT-DRG-DA-300500.dwg
12/08/2018 10:04 AM
12/08/2018

CSWSMP-MAC-SMN-AT-DRG-DA-300500.dwg
12/08/2018 10:04 AM
12/08/2018

CSWSMP-MAC-SMN-AT-DRG-DA-300500.dwg
12/08/2018 10:04 AM
12/08/2018

CSWSMP-MAC-SMN-AT-DRG-DA-300500.dwg
12/08/2018 10:04 AM
12/08/2018

CSWSMP-MAC-SMN-AT-DRG-DA-300500.dwg
12/08/2018 10:04 AM
12/08/2018

CSWSMP-MAC-SMN-AT-DRG-DA-300500.dwg
12/08/2018 10:04 AM
12/08/2018

CSWSMP-MAC-SMN-AT-DRG-DA-300500.dwg
12/08/2018 10:04 AM
12/08/2018

CSWSMP-MAC-SMN-AT-DRG-DA-300500.dwg
12/08/2018 10:04 AM
12/08/2018

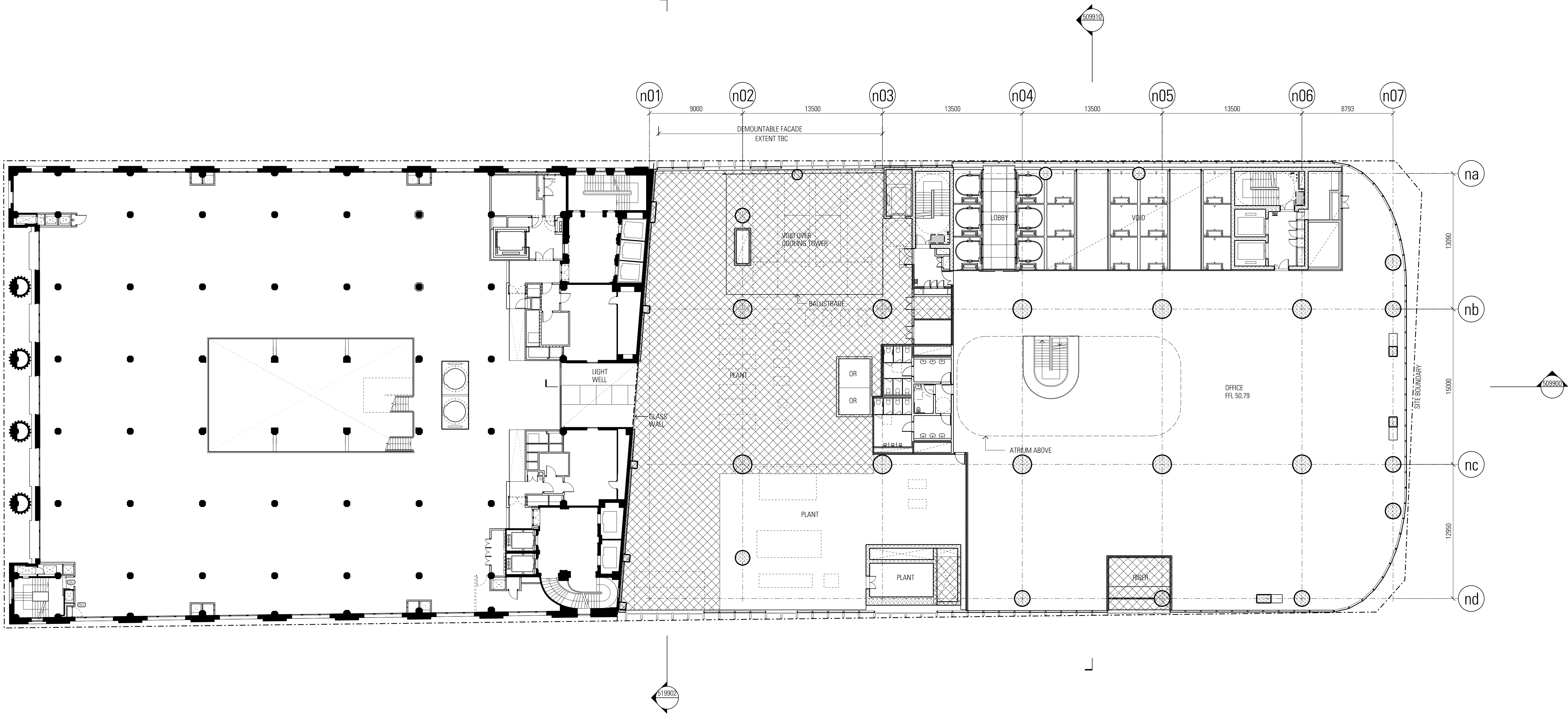
CSWSMP-MAC-SMN-AT-DRG-DA-300500.dwg
12/08/2018 10:04 AM
12/08/2018

CSWSMP-MAC-SMN-AT-DRG-DA-300500.dwg
12/08/2018 10:04 AM
12/08/2018

CSWSMP-MAC-SMN-AT-DRG-DA-300500.dwg
12/08/2018 10:04 AM
12/08/2018

CSWSMP-MAC-SMN-AT-DRG-DA-300500.dwg
12/08/2018 10:04 AM
12/08/2018

CSWSMP-MAC-SMN-AT-DRG-DA-300500.dwg
12/08/2018 10:04 AM
12/08/2018



Rev	App	Ckd	Revision or reason for issue	Date	Legend
A	PB	PVR	Stage 2 DA Draft	29-06-18	
B	PB	PVR	Stage 2 DA Draft	06-07-18	
C	PB	PVR	Stage 2 DA Draft	18-07-18	
D	PB	PVR	Stage 2 DA	03-08-18	
E	PB	PVR	Stage 2 DA	07-08-18	
F	PB	PVR	Stage 2 DA	23-08-18	
G	PB	PVR	Stage 2 DA	23-08-18	

CSST Areas (not for approval)

CSST detail is indicative and subject to separate approval.

Final OSD detail on station levels is subject to issue of the relevant construction certificate and approved Station Design and Precinct Plan.

Scale / North Point

1:200 @ A1, 1:400 @ A3

0 2 4 6 10

General Notes

Do not scale from drawing. Use marked dimensions. To be read in conjunction with all other Consultant's drawings. The Architect to be immediately notified of any discrepancies. Copyright on this drawing retained by the Architect.

Notes

This architectural package describes the North Tower. Refer to Grimshaw for Metro and Tzannes for South Tower

Disclaimer

Street trees, furniture and other public domain elements within the precinct are indicative only and are subject to relevant approvals and detailed coordination with new and existing underground utilities and infrastructure.

Authoring Organisation

GRIMSHAW

Grimshaw
Level 2, 333 George Street, Sydney
New South Wales 2000 Australia

Telephone ++ +61 2 9253 0200
Email info@grimshaw-architects.com

Architect

**JPW
JOHNSON PILTON WALKER**

Johnson Pilton Walker Pty Ltd ACN 095 778 886
Level 10 Plaza Building Australia Square 95 Pitt Street Sydney
New South Wales 2000 Australia

Telephone +61 2 9259 5900
Email jpw@jpw.com.au

Project Title

**SYDNEY METRO MARTIN PLACE -
integrated station development**

Client
Macquarie Group Ltd
50 Martin Place, Sydney
New South Wales 2000 Australia

Telephone +61 2 8232 3333
Email: www.macquarie.com

Drawing Title

**SYDNEY METRO - MARTIN PLACE
LEVEL 06 PLAN
GENERAL ARRANGEMENT**

Status
STAGE II SEDA

Drawing Number
CSWSMP-MAC-SMN-AT-DRG-DA-300600

Revision
G

Rev	App	Ckd	Revision or reason for issue	Date	Legend
A	PB	PVR	Stage 2 DA Draft	29-06-18	
B	PB	PVR	Stage 2 DA Draft	06-07-18	
C	PB	PVR	Stage 2 DA Draft	18-07-18	
D	PB	PVR	Stage 2 DA	03-08-18	
E	PB	PVR	Stage 2 DA	07-08-18	
F	PB	PVR	Stage 2 DA	22-08-18	

CSWSMP-MAC-SMN-AT-DRG-DA-300700.dwg
23/08/2018
2:33 PM

CSWSMP-MAC-SMN-AT-DRG-DA-300700.dwg
23/08/2018
2:33 PM

CSWSMP-MAC-SMN-AT-DRG-DA-300700.dwg
23/08/2018
2:33 PM

CSWSMP-MAC-SMN-AT-DRG-DA-300700.dwg
23/08/2018
2:33 PM

CSWSMP-MAC-SMN-AT-DRG-DA-300700.dwg
23/08/2018
2:33 PM

CSWSMP-MAC-SMN-AT-DRG-DA-300700.dwg
23/08/2018
2:33 PM

CSWSMP-MAC-SMN-AT-DRG-DA-300700.dwg
23/08/2018
2:33 PM

CSWSMP-MAC-SMN-AT-DRG-DA-300700.dwg
23/08/2018
2:33 PM

CSWSMP-MAC-SMN-AT-DRG-DA-300700.dwg
23/08/2018
2:33 PM

CSWSMP-MAC-SMN-AT-DRG-DA-300700.dwg
23/08/2018
2:33 PM

CSWSMP-MAC-SMN-AT-DRG-DA-300700.dwg
23/08/2018
2:33 PM

Rev	App	Ckd	Revision or reason for issue	Date	Legend
A	PB	PVR	Stage 2 DA Draft	29-06-18	
B	PB	PVR	Stage 2 DA Draft	06-07-18	
C	PB	PVR	Stage 2 DA Draft	16-07-18	
D	PB	PVR	Stage 2 DA	03-08-18	
E	PB	PVR	Stage 2 DA	07-08-18	
F	PB	PVR	Stage 2 DA	22-08-18	

CSST Areas (not for approval)

CSST detail is indicative and subject to separate approval.

Final OSD detail on station levels is subject to issue of the relevant construction certificate and approved Station Design and Precinct Plan.

Scale / North Point

1:200 @ A1, 1:400 @ A3

General Notes

Do not scale from drawing. Use marked dimensions. To be read in conjunction with all other Consultant's drawings. The Architect to be immediately notified of any discrepancies. Copyright on this drawing retained by the Architect.

Notes

This architectural package describes the North Tower. Refer to Grimshaw for Metro and Trains for South Tower

Disclaimer

Street trees, furniture and other public domain elements within the precinct are indicative only and are subject to relevant approvals and detailed coordination with new and existing underground utilities and infrastructure.

Authoring Organisation

GRIMSHAW

Grimshaw
Level 2, 333 George Street, Sydney
New South Wales 2000 Australia

Telephone ++61 2 9253 0200
Email info@grimshaw-architects.com

Architect

**JPW
JOHNSON PILTON WALKER**

Johnson Pilton Walker Pty Ltd ACN 095 778 886
Level 10 Plaza Building Australia Square 95 Pitt Street Sydney
New South Wales 2000 Australia

Telephone +61 2 9259 5900
Email jpw@jpw.com.au

Project Title

**SYDNEY METRO MARTIN PLACE -
integrated station development**



Client
Macquarie Group Ltd
50 Martin Place, Sydney
New South Wales 2000 Australia

Telephone +61 2 8232 3333
Email: www.macquarie.com

Drawing Title

**SYDNEY METRO - MARTIN PLACE
LEVEL 08 PLAN
GENERAL ARRANGEMENT**

Status

STAGE II SSDA

Drawing Number

CSWSMP-MAC-SMN-AT-DRG-DA-300800

Revision

F

Rev	App	Ckd	Revision or reason for issue	Date	Legend
A	PB	PVR	Stage 2 DA Draft	29-06-18	
B	PB	PVR	Stage 2 DA Draft	06-07-18	
C	PB	PVR	Stage 2 DA Draft	16-07-18	
D	PB	PVR	Stage 2 DA	03-08-18	
E	PB	PVR	Stage 2 DA	07-08-18	
F	PB	PVR	Stage 2 DA	22-08-18	

CSST Areas (not for approval)

CSST detail is indicative and subject to separate approval.

Final OSD detail on station levels is subject to issue of the relevant construction certificate and approved Station Design and Precinct Plan.

Scale / North Point

1:200 @ A1, 1:400 @ A3

General Notes

Do not scale from drawing. Use marked dimensions. To be read in conjunction with all other Consultant's drawings. The Architect to be immediately notified of any discrepancies. Copyright on this drawing retained by the Architect.

Notes

This architectural package describes the North Tower. Refer to Grimshaw for Metro and Trains for South Tower

Disclaimer

Street trees, furniture and other public domain elements within the precinct are indicative only and are subject to relevant approvals and detailed coordination with new and existing underground utilities and infrastructure.

Authoring Organisation

GRIMSHAW

Grimshaw
Level 2, 333 George Street, Sydney
New South Wales 2000 Australia

Telephone ++ +61 2 9253 0200
Email info@grimshaw-architects.com

Architect

**JPW
JOHNSON PILTON WALKER**

Johnson Pilton Walker Pty Ltd ACN 095 778 886
Level 10 Plaza Building Australia Square 95 Pitt Street Sydney
New South Wales 2000 Australia

Telephone +61 2 9259 5900
Email jpw@jpw.com.au

Project Title

**SYDNEY METRO MARTIN PLACE -
integrated station development**



Client
Macquarie Group Ltd
50 Martin Place, Sydney
New South Wales 2000 Australia

Telephone +61 2 8232 3333
Email: www.macquarie.com

Drawing Title

**SYDNEY METRO - MARTIN PLACE
LEVEL 09 PLAN
GENERAL ARRANGEMENT**

Status

STAGE II SSDA

Drawing Number

CSWSMP-MAC-SMN-AT-DRG-DA-300900

Revision

F