

Rev	App	Ckd	Revision or reason for issue	Date	Legend
A	PB	PVR	Stage 2 DA Draft	29-06-18	
B	PB	PVR	Stage 2 DA Draft	06-07-18	
C	PB	PVR	Stage 2 DA Draft	18-07-18	
D	PB	PVR	Stage 2 DA	03-08-18	
E	PB	PVR	Stage 2 DA	07-08-18	
F	PB	PVR	Stage 2 DA	22-08-18	

CSST Areas (not for approval)

CSST detail is indicative and subject to separate approval.

Final OSD detail on station levels is subject to issue of the relevant construction certificate and approved Station Design and Precinct Plan.

Scale / North Point

1:200 @ A1, 1:400 @ A3

General Notes

Do not scale from drawing. Use marked dimensions. To be read in conjunction with all other Consultant's drawings. The Architect to be immediately notified of any discrepancies. Copyright on this drawing retained by the Architect.

Notes

This architectural package describes the North Tower. Refer to Grimshaw for Metro and Trammes for South Tower

Disclaimer

Street trees, furniture and other public domain elements within the precinct are indicative only and are subject to relevant approvals and detailed coordination with new and existing underground utilities and infrastructure.

Authoring Organisation

GRIMSHAW

Grimshaw
Level 2, 333 George Street, Sydney
New South Wales 2000 Australia

Telephone ++ +61 2 9253 0200
Email info@grimshaw-architects.com

Architect

**JPW
JOHNSON PILTON WALKER**

Johnson Pilton Walker Pty Ltd ACN 095 778 886
Level 10 Plaza Building Australia Square 95 Pitt Street Sydney
New South Wales 2000 Australia

Telephone +61 2 9259 5900
Email jpw@jpw.com.au

Project Title

**SYDNEY METRO - MARTIN PLACE -
integrated station development**



Client
Macquarie Group Ltd
50 Martin Place, Sydney
New South Wales 2000 Australia

Telephone +61 2 8232 3333
Email: www.macquarie.com

Drawing Title

**SYDNEY METRO - MARTIN PLACE
LEVEL 35 PLAN
GENERAL ARRANGEMENT**

Status

STAGE II SSDA

Drawing Number

CSWSMP-MAC-SMN-AT-DRG-DA-303500

Revision

F

Rev	App	Ckd	Revision or reason for issue	Date
A	PB	PVR	Stage 2 DA Draft	29-06-18
B	PB	PVR	Stage 2 DA Draft	06-07-18
C	PB	PVR	Stage 2 DA Draft	18-07-18
D	PB	PVR	Stage 2 DA	03-08-18
E	PB	PVR	Stage 2 DA	07-08-18
F	PB	PVR	Stage 2 DA	22-08-18

Legend	Date
	29-06-18
	06-07-18
	18-07-18
	03-08-18
	07-08-18
	22-08-18

CSWI Areas (not for approval)

CSWI detail is indicative and subject to separate approval.

Final OSD detail on station levels is subject to issue of the relevant construction certificate and approved Station Design and Precinct Plan.

Scale / North Point

1:200 @ A1, 1:400 @ A3

General Notes

Do not scale from drawing. Use marked dimensions. To be read in conjunction with all other Consultant's drawings. The Architect to be immediately notified of any discrepancies. Copyright on this drawing retained by the Architect.

Notes

This architectural package describes the North Tower. Refer to Grimshaw for Metro and Trammes for South Tower

Disclaimer

Street trees, furniture and other public domain elements within the precinct are indicative only and are subject to relevant approvals and detailed coordination with new and existing underground utilities and infrastructure.

Authoring Organisation

GRIMSHAW

Grimshaw
Level 2, 333 George Street, Sydney
New South Wales 2000 Australia

Telephone ++ +61 2 9253 0200
Email info@grimshaw-architects.com

Architect

**JPW
JOHNSON PILTON WALKER**

Johnson Pilton Walker Pty Ltd ACN 095 778 886
Level 10 Plaza Building Australia Square 95 Pitt Street Sydney
New South Wales 2000 Australia

Telephone +61 2 8259 5900
Email jpw@jpw.com.au

Project Title

**SYDNEY METRO - MARTIN PLACE -
integrated station development**



Client
Macquarie Group Ltd
50 Martin Place, Sydney
New South Wales 2000 Australia

Telephone +61 2 8232 3333
Email: www.macquarie.com

Drawing Title

**SYDNEY METRO - MARTIN PLACE
LEVEL 36 PLAN
GENERAL ARRANGEMENT**

Status Revision

STAGE II SSDA F

Drawing Number

CSWSMP-MAC-SMN-AT-DRG-DA-303600

Rev	App	Ckd	Revision or reason for issue	Date	Legend
A	PB	PVR	Stage 2 DA Draft	29-06-18	
B	PB	PVR	Stage 2 DA Draft	06-07-18	
C	PB	PVR	Stage 2 DA Draft	18-07-18	
D	PB	PVR	Stage 2 DA	03-08-18	
E	PB	PVR	Stage 2 DA	07-08-18	
F	PB	PVR	Stage 2 DA	22-08-18	

CSST Areas (not for approval)

CSST detail is indicative and subject to separate approval.

Final OSD detail on station levels is subject to issue of the relevant construction certificate and approved Station Design and Precinct Plan.

Scale / North Point

1:200 @ A1, 1:400 @ A3

General Notes

Do not scale from drawing. Use marked dimensions. To be read in conjunction with all other Consultant's drawings. The Architect to be immediately notified of any discrepancies. Copyright on this drawing retained by the Architect.

Notes

This architectural package describes the North Tower. Refer to Grimshaw for Metro and Trams for South Tower

Disclaimer

Street trees, furniture and other public domain elements within the precinct are indicative only and are subject to relevant approvals and detailed coordination with new and existing underground utilities and infrastructure.

Authoring Organisation

GRIMSHAW

Grimshaw
Level 2, 333 George Street, Sydney
New South Wales 2000 Australia

Telephone ++ 61 2 9253 0200
Email info@grimshaw-architects.com

Architect

**JPW
JOHNSON PILTON WALKER**

Johnson Pilton Walker Pty Ltd ACN 095 778 886
Level 10 Plaza Building Australia Square 95 Pitt Street Sydney
New South Wales 2000 Australia

Telephone +61 2 9259 5900
Email jpw@jpw.com.au

Project Title

**SYDNEY METRO - MARTIN PLACE -
integrated station development**



Client
Macquarie Group Ltd
50 Martin Place, Sydney
New South Wales 2000 Australia

Telephone +61 2 8232 3333
Email: www.macquarie.com

Drawing Title

**SYDNEY METRO - MARTIN PLACE
LEVEL 37 PLAN
GENERAL ARRANGEMENT**

Status Revision

STAGE II SSDA F

Drawing Number

CSWSMP-MAC-SMN-AT-DRG-DA-303700

Rev	App	Ckd	Revision or reason for issue	Date	Legend
A	PB	PVR	Stage 2 DA Draft	29-06-18	
B	PB	PVR	Stage 2 DA Draft	06-07-18	
C	PB	PVR	Stage 2 DA Draft	18-07-18	
D	PB	PVR	Stage 2 DA	03-08-18	
E	PB	PVR	Stage 2 DA	07-08-18	
F	PB	PVR	Stage 2 DA	22-08-18	

CSST Areas (not for approval)

CSST detail is indicative and subject to separate approval.

Final OSD detail on station levels is subject to issue of the relevant construction certificate and approved Station Design and Precinct Plan.

Scale / North Point

1:200 @ A1, 1:400 @ A3

General Notes

Do not scale from drawing. Use marked dimensions. To be read in conjunction with all other Consultant's drawings. The Architect to be immediately notified of any discrepancies. Copyright on this drawing retained by the Architect.

Notes

This architectural package describes the North Tower. Refer to Grimshaw for Metro and Trammes for South Tower

Disclaimer

Street trees, furniture and other public domain elements within the precinct are indicative only and are subject to relevant approvals and detailed coordination with new and existing underground utilities and infrastructure.

Authoring Organisation

GRIMSHAW

Grimshaw
Level 2, 333 George Street, Sydney
New South Wales 2000 Australia

Telephone ++ 61 2 9253 0200
Email info@grimshaw-architects.com

Architect

**JPW
JOHNSON PILTON WALKER**

Johnson Pilton Walker Pty Ltd ACN 095 778 886
Level 10 Plaza Building Australia Square 95 Pitt Street Sydney
New South Wales 2000 Australia

Telephone +61 2 9259 5900
Email jpw@jpw.com.au

Project Title

**SYDNEY METRO MARTIN PLACE -
integrated station development**



Client
Macquarie Group Ltd
50 Martin Place, Sydney
New South Wales 2000 Australia

Telephone +61 2 8232 3333
Email: www.macquarie.com

Drawing Title

**SYDNEY METRO - MARTIN PLACE
LEVEL 38 PLAN
GENERAL ARRANGEMENT**

Status

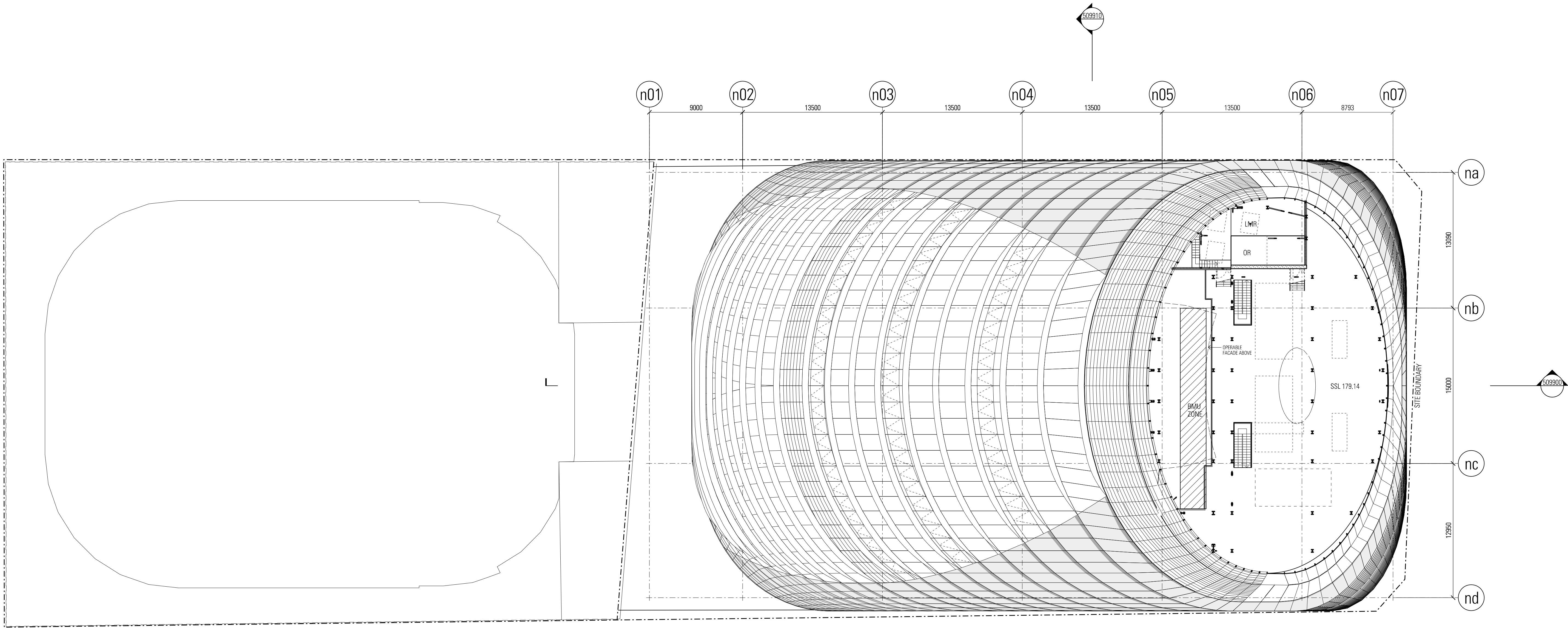
STAGE II SSDA

Drawing Number

CSWSMP-MAC-SMN-AT-DRG-DA-303800

Revision

F



Rev	App	Ckd	Revision or reason for issue	Date	Legend
A	PB	PVR	Stage 2 DA Draft	29-06-18	
B	PB	PVR	Stage 2 DA Draft	06-07-18	
C	PB	PVR	Stage 2 DA Draft	18-07-18	
D	PB	PVR	Stage 2 DA	03-08-18	
E	PB	PVR	Stage 2 DA	07-08-18	
F	PB	PVR	Stage 2 DA	22-08-18	

CSST Areas (not for approval)

CSST detail is indicative and subject to separate approval.

Final OSD detail on station levels is subject to issue of the relevant construction certificate and approved Station Design and Precinct Plan.

Scale / North Point

1:200 @ A1, 1:400 @ A3

General Notes

Do not scale from drawing. Use marked dimensions. To be read in conjunction with all other Consultant's drawings. The Architect to be immediately notified of any discrepancies. Copyright on this drawing retained by the Architect.

Notes

This architectural package describes the North Tower. Refer to Grimshaw for Metro and Tzannes for South Tower

Disclaimer

Street trees, furniture and other public domain elements within the precinct are indicative only and are subject to relevant approvals and detailed coordination with new and existing underground utilities and infrastructure.

Authoring Organisation

GRIMSHAW

Grimshaw
Level 2, 333 George Street, Sydney
New South Wales 2000 Australia

Telephone + +61 2 9253 0200
Email info@grimshaw-architects.com

Architect

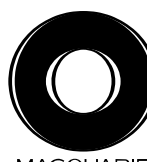
JPW
JOHNSON PILTON WALKER

Johnson Pilton Walker Pty Ltd ACN 095 778 886
Level 10 Plaza Building Australia Square 95 Pitt Street Sydney
New South Wales 2000 Australia

Telephone +61 2 9259 5900
Email jpw@jpw.com.au

Project Title

SYDNEY METRO MARTIN PLACE -
integrated station development



Client
Macquarie Group Ltd
50 Martin Place, Sydney
New South Wales 2000 Australia

Telephone +61 2 8232 3333
Email: www.macquarie.com

Drawing Title

SYDNEY METRO - MARTIN PLACE
LEVEL 39 PLAN
GENERAL ARRANGEMENT

Status
STAGE II SSDA

Drawing Number

CSWSMP-MAC-SMN-AT-DRG-DA-303900

Revision

F

Rev	App	Ckd	Revision or reason for issue	Date	Legend
A	PB	PVR	Stage 2 DA Draft	29-06-18	
B	PB	PVR	Stage 2 DA Draft	06-07-18	
C	PB	PVR	Stage 2 DA Draft	18-07-18	
D	PB	PVR	Stage 2 DA	03-08-18	
E	PB	PVR	Stage 2 DA	07-08-18	
F	PB	PVR	Stage 2 DA	22-08-18	

CSST Areas (not for approval)

CSST detail is indicative and subject to separate approval.

Final OSD detail on station levels is subject to issue of the relevant construction certificate and approved Station Design and Precinct Plan.

Scale / North Point

1:200 @ A1, 1:400 @ A3

General Notes

Do not scale from drawing. Use marked dimensions. To be read in conjunction with all other Consultant's drawings. The Architect to be immediately notified of any discrepancies. Copyright on this drawing retained by the Architect.

Notes

This architectural package describes the North Tower. Refer to Grimshaw for Metro and Trammes for South Tower

Disclaimer

Street trees, furniture and other public domain elements within the precinct are indicative only and are subject to relevant approvals and detailed coordination with new and existing underground utilities and infrastructure.

Authoring Organisation

GRIMSHAW

Grimshaw
Level 2, 333 George Street, Sydney
New South Wales 2000 Australia

Telephone ++ 61 2 9253 0200
Email info@grimshaw-architects.com

Architect

**JPW
JOHNSON PILTON WALKER**

Johnson Pilton Walker Pty Ltd ACN 095 778 886
Level 10 Plaza Building Australia Square 95 Pitt Street Sydney
New South Wales 2000 Australia

Telephone +61 2 9259 5900
Email jpw@jpw.com.au

Project Title

**SYDNEY METRO - MARTIN PLACE -
integrated station development**



Client
Macquarie Group Ltd
50 Martin Place, Sydney
New South Wales 2000 Australia

Telephone +61 2 8232 3333
Email: www.macquarie.com

Drawing Title

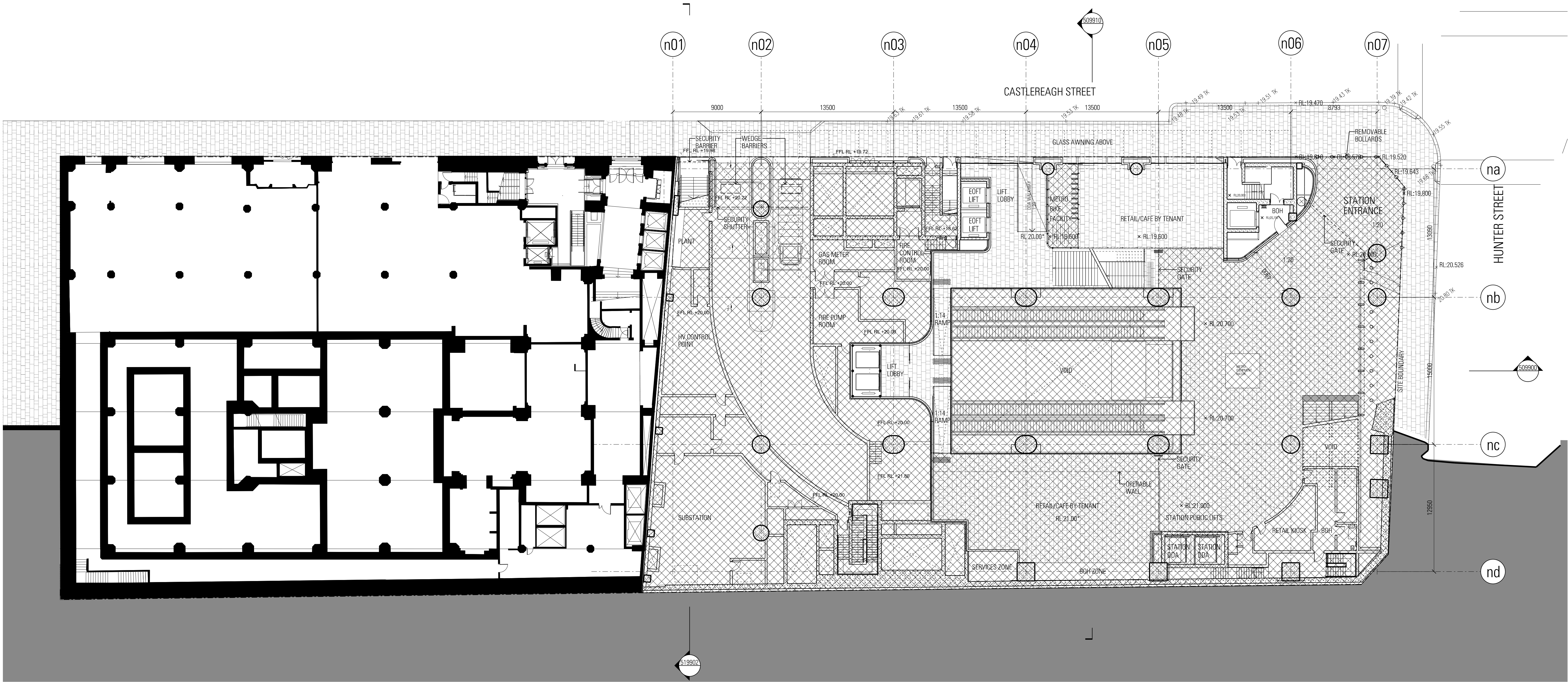
**SYDNEY METRO - MARTIN PLACE
ROOF PLAN
GENERAL ARRANGEMENT**

Status Revision

STAGE II SSDA F

Drawing Number

CSWSMP-MAC-SMN-AT-DRG-DA-305000



C:\SWMP\MAC-SMN-AT-DRG-DA-308000.dgn
23/09/18
2:33:09 PM

Rev	App	Ckd	Revision or reason for issue	Date	Legend
A	PB	PVR	Stage 2 DA Draft	29-06-18	
B	PB	PVR	Stage 2 DA Draft	06-07-18	
C	PB	PVR	Stage 2 DA Draft	18-07-18	
D	PB	PVR	Stage 2 DA	03-08-18	
E	PB	PVR	Stage 2 DA	07-08-18	
F	PB	PVR	Stage 2 DA	08-08-18	
G	PB	PVR	Stage 2 DA	22-08-18	

CSST Areas (not for approval)

CSST detail is indicative and subject to separate approval.

Final OSD detail on station levels is subject to issue of the relevant construction certificate and approved Station Design and Precinct Plan.

Scale / North Point

1:200 @ A1, 1:400 @ A3

General Notes

Do not scale from drawing. Use marked dimensions. To be read in conjunction with all other Consultant's drawings. The Architect to be immediately notified of any discrepancies. Copyright on this drawing retained by the Architect.

Notes

This architectural package describes the North Tower. Refer to Grimshaw for Metro and Tzannes for South Tower

Disclaimer

Street trees, furniture and other public domain elements within the precinct are indicative only and are subject to relevant approvals and detailed coordination with new and existing underground utilities and infrastructure.

Authoring Organisation

GRIMSHAW

Grimshaw
Level 2, 333 George Street, Sydney
New South Wales 2000 Australia

Telephone + +61 2 9253 0200
Email info@grimshaw-architects.com

Architect

**JPW
JOHNSON PILTON WALKER**

Johnson Pilton Walker Pty Ltd ACN 095 778 886
Level 10 Plaza Building Australia Square 95 Pitt Street Sydney
New South Wales 2000 Australia

Telephone +61 2 9259 5900
Email jpww@jpww.com.au

Project Title

**SYDNEY METRO MARTIN PLACE -
Integrated station development**



Client
Macquarie Group Ltd
50 Martin Place, Sydney
New South Wales 2000 Australia

Telephone +61 2 8232 3333
Email: www.macquarie.com

Drawing Title

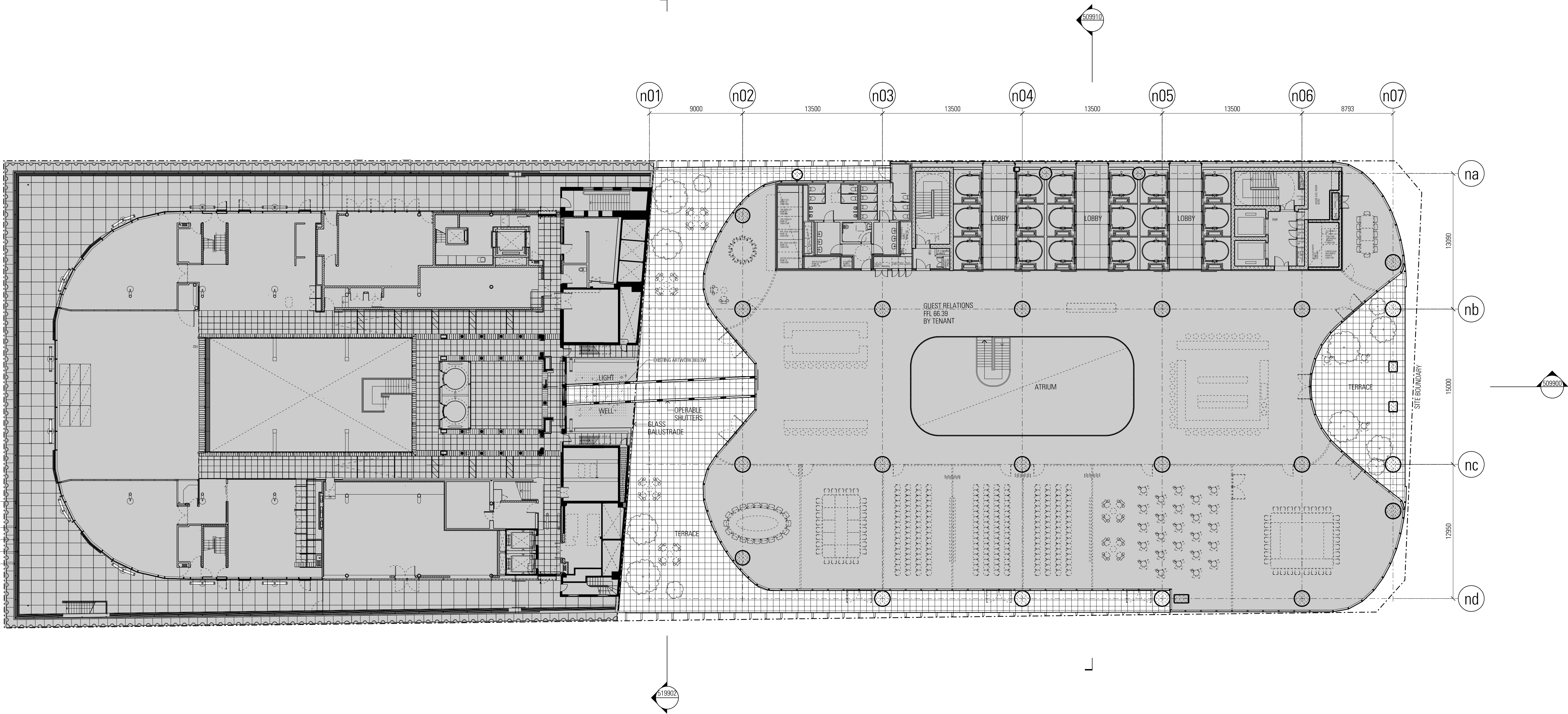
**SYDNEY METRO - MARTIN PLACE
LOWER GROUND PLAN - CASTLEREAGH STREET
GENERAL ARRANGEMENT**

Status
STAGE II SSDA

Drawing Number
CWSMP-MAC-SMN-AT-DRG-DA-308000

Revision

G



Rev	App	Ckd	Revision or reason for issue	Date	Legend
A	PB	PVR	Stage 2 DA Draft	29-06-18	
B	PB	PVR	Stage 2 DA Draft	06-07-18	
C	PB	PVR	Stage 2 DA Draft	18-07-18	
D	PB	PVR	Stage 2 DA	03-08-18	
E	PB	PVR	Stage 2 DA	07-08-18	
F	PB	PVR	Stage 2 DA	22-08-18	

CSST Areas (not for approval)

CSST detail is indicative and subject to separate approval.

Final OSD detail on station levels is subject to issue of the relevant construction certificate and approved Station Design and Precinct Plan.

Scale / North Point

1:200 @ A1, 1:400 @ A3

General Notes
Do not scale from drawing. Use marked dimensions. To be read in conjunction with all other Consultant's drawings. The Architect to be immediately notified of any discrepancies. Copyright on this drawing retained by the Architect.

Notes

This architectural package describes the North Tower. Refer to Grimshaw for Metro and T2/Inner for South Tower

Disclaimer

Street trees, furniture and other public domain elements within the precinct are indicative only and are subject to relevant approvals and detailed coordination with new and existing underground utilities and infrastructure.

Authoring Organisation

GRIMSHAW

Grimshaw
Level 2, 333 George Street, Sydney
New South Wales 2000 Australia

Telephone ++ +61 2 9253 0200
Email info@grimshaw-architects.com

Architect

**JPW
JOHNSON PILTON WALKER**

Johnson Pilton Walker Pty Ltd ACN 095 778 886
Level 10 Plaza Building Australia Square 95 Pitt Street Sydney
New South Wales 2000 Australia

Telephone ++ +61 2 9259 5900
Email jp@jpjw.com.au

Project Title

**SYDNEY METRO MARTIN PLACE -
integrated station development**



Client
Macquarie Group Ltd
50 Martin Place, Sydney
New South Wales 2000 Australia

Telephone ++ +61 2 8232 3333
Email: www.macquarie.com

Drawing Title

**SYDNEY METRO - MARTIN PLACE
LANDSCAPE PLAN
GENERAL ARRANGEMENT**

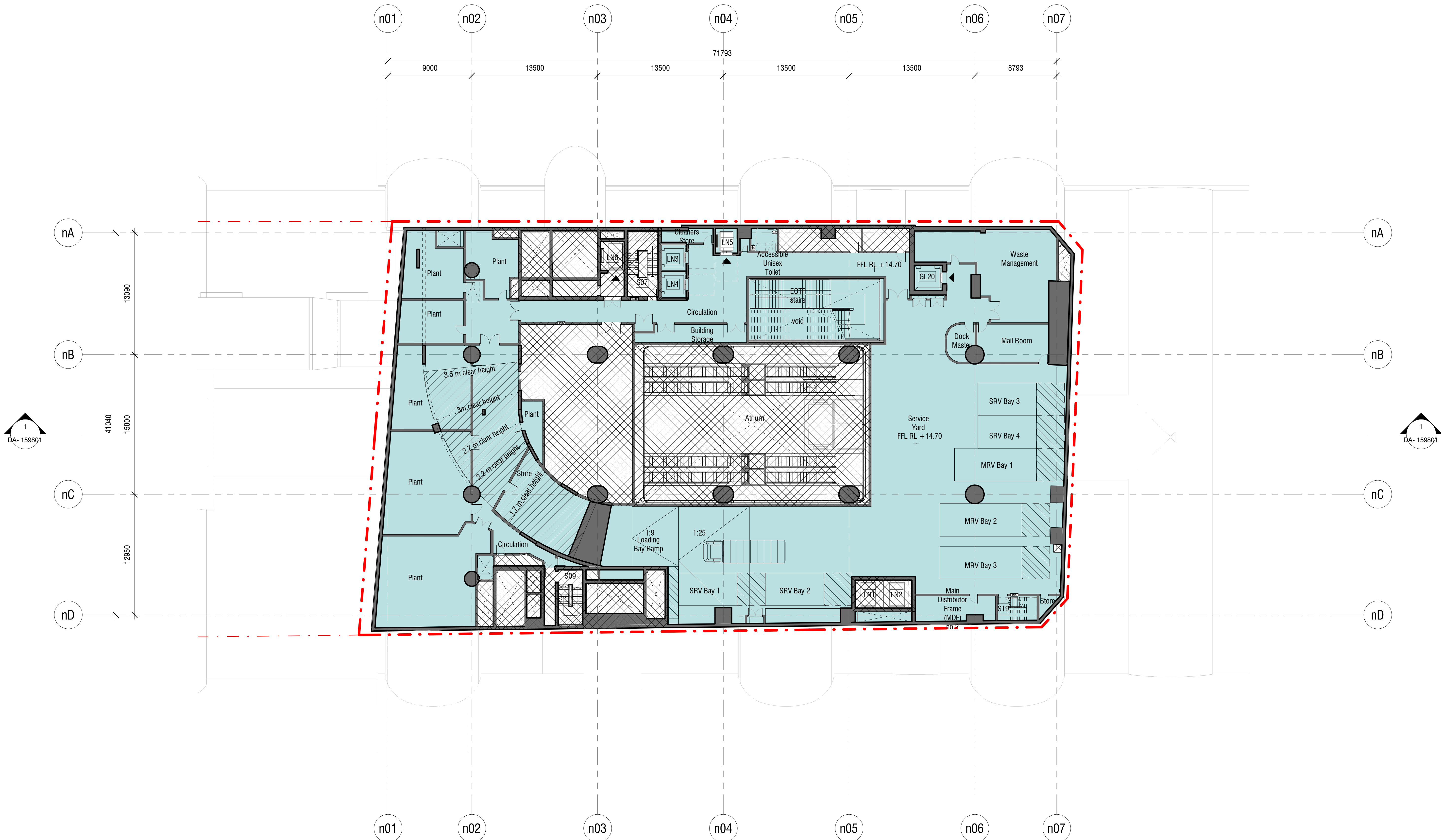
Status
STAGE II SSDA

Drawing Number

CSWSMP-MAC-SMN-AT-DRG-DA-391000

Revision

F



Rev	App	Ckd	Revision or reason for issue	Date
0	AC	MC	STAGE II SSDA - DRAFT ISSUE	29.06.2018
1	AC	MC	STAGE II SSDA - DRAFT ISSUE	30.07.2018
2	AC	MC	STAGE II SSDA - DRAFT ISSUE	03.08.2018
3	AC	MC	STAGE II SSDA - DRAFT ISSUE	07.08.2018
4	AC	MC	STAGE II SSDA - DRAFT ISSUE	09.08.2018
A	AC	MC	STAGE II SSDA - DRAFT ISSUE	10.08.2018
B	AC	MC	STAGE II SSDA	23.08.2018

Legend
CSSI Areas (not for approval)
Site Boundary
SSDA areas below-ground

Scale / North Point

1:200 @ A1, 1:400 @ A3

0 2 4 6 10

General Notes

Do not scale from drawing. Use marked dimensions. To be read in conjunction with all other Consultant's drawings. The Architect to be immediately notified of any discrepancies. Copyright on this drawing retained by the Architect.

Notes

This architectural package describes metro-related areas. Refer to Tzannes for South OSD and JPW for North OSD.

CSSI detail is indicative and subject to separate approval.

Final OSD detail on station levels is subject to issue of the relevant construction certificate and approved Station Design and Precinct Plan

Street trees, furniture, and other public domain elements within the precinct are indicative only and are subject to relevant approvals and detailed coordination with new and existing underground utilities and infrastructure.

Authoring Organisation

GRIMSHAW

Grimshaw
Level 2, 333 George Street, Sydney
New South Wales 2000 Australia

Telephone +61 2 9253 0200
Email info@grimshaw-architects.com

Architect

**JPW
JOHNSON PILTON WALKER**

Johnson Pilton Walker Pty Ltd ACN 095 778 886
Level 10 Plaza Building Australia Square 95 Pitt Street Sydney
New South Wales 2000 Australia

Telephone +61 2 9259 5900
Email jpw@jpw.com.au

Project Title

**SYDNEY METRO MARTIN PLACE -
integrated station development**

Client
Macquarie Group Ltd
50 Martin Place, Sydney
New South Wales 2000 Australia

Telephone +61 2 8232 3333
Email: www.macquarie.com

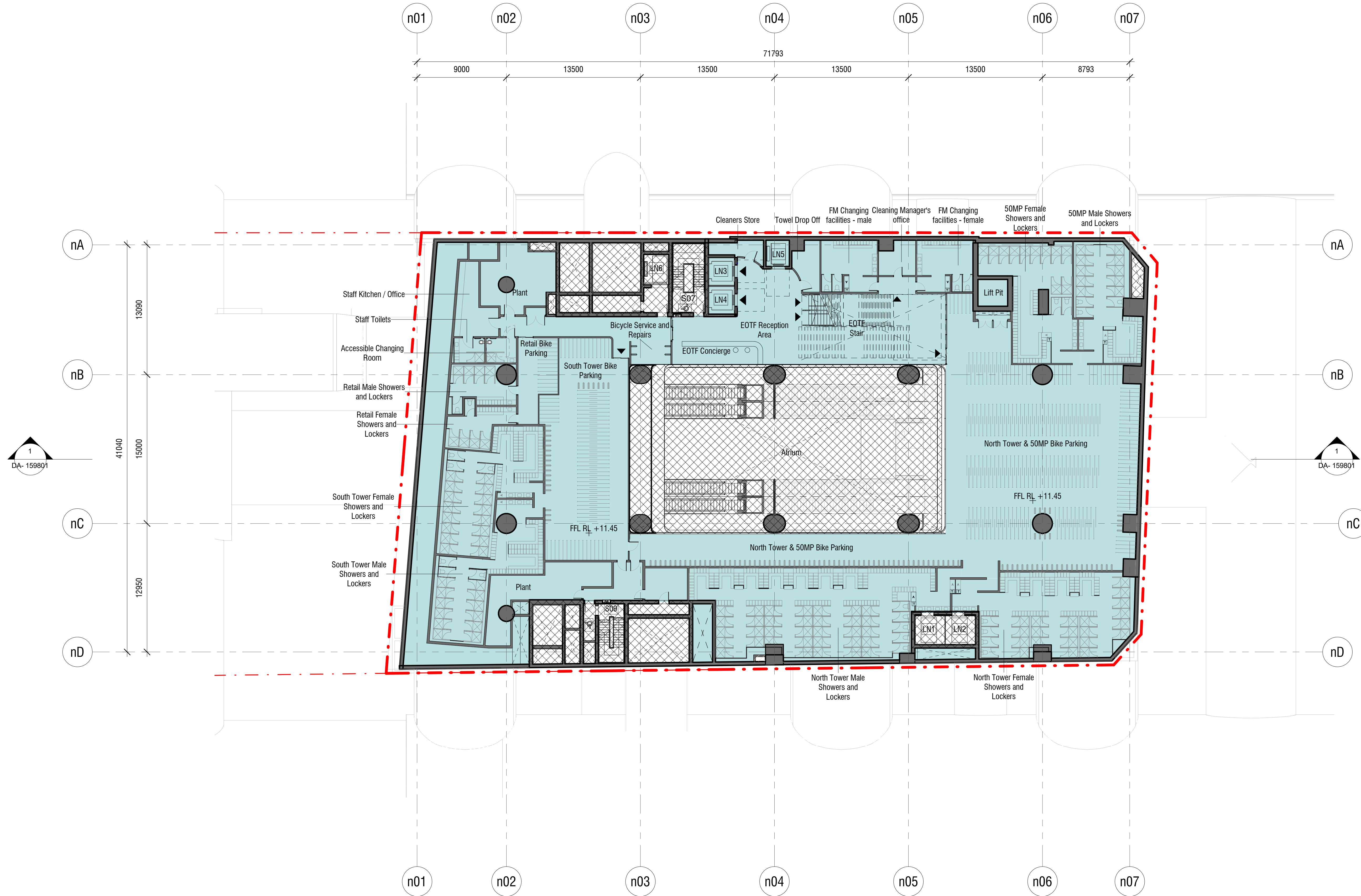
Drawing Title

LEVEL B1 PLAN - SERVICE YARD

Status
STAGE II SSDA

Drawing Number
CSWSMP- MAC- SMN- AT- DRG- DA- 308100_B

Revision
B



Rev	App	Ckd	Revision or reason for issue	Date
0	AC	MC	STAGE II SSDA - DRAFT ISSUE	29.06.2018
1	AC	MC	STAGE II SSDA - DRAFT ISSUE	30.07.2018
2	AC	MC	STAGE II SSDA - DRAFT ISSUE	03.08.2018
3	AC	MC	STAGE II SSDA - DRAFT ISSUE	09.08.2018
A	AC	MC	STAGE II SSDA - DRAFT ISSUE	10.08.2018
B	AC	MC	STAGE II SSDA	23.08.2018
C	AC	MC	STAGE II SSDA - TABLE ADDED	12.03.2019
D	AC	MC	STAGE II SSDA - REVISED LAYOUT	12.03.2019

Legend
CSSI Areas (not for approval)
Site Boundary
SSDA areas below-ground

Scale / North Point

1:200 @ A1, 1:400 @ A3

0 2 4 6 8 10

General Notes

Do not scale from drawing. Use marked dimensions. To be read in conjunction with all other Consultant's drawings. The Architect to be immediately notified of any discrepancies. Copyright on this drawing retained by the Architect.

Notes

This architectural package describes metro-related areas. Refer to Tzannes for South OSD and JPW for North OSD.

CSSI detail is indicative and subject to separate approval.

Final OSD detail on station levels is subject to issue of the relevant construction certificate and approved Station Design and Precinct Plan

Street trees, furniture, and other public domain elements within the precinct are indicative only and are subject to relevant approvals and detailed coordination with new and existing underground utilities and infrastructure.

Authoring Organisation

GRIMSHAW

Grimshaw
Level 2, 333 George Street, Sydney
New South Wales 2000 Australia

Telephone +61 2 9253 0200
Email info@grimshaw-architects.com

Architect

**JPW
JOHNSON PILTON WALKER**

Johnson Pilton Walker Pty Ltd ACN 095 778 886
Level 10 Plaza Building Australia Square 95 Pitt Street Sydney
New South Wales 2000 Australia

Telephone +61 2 9259 5900
Email jpww@jpww.com.au

Project Title

**SYDNEY METRO MARTIN PLACE -
integrated station development**

Client
Macquarie Group Ltd
50 Martin Place, Sydney
New South Wales 2000 Australia

Telephone +61 2 8232 3333
Email: www.macquarie.com

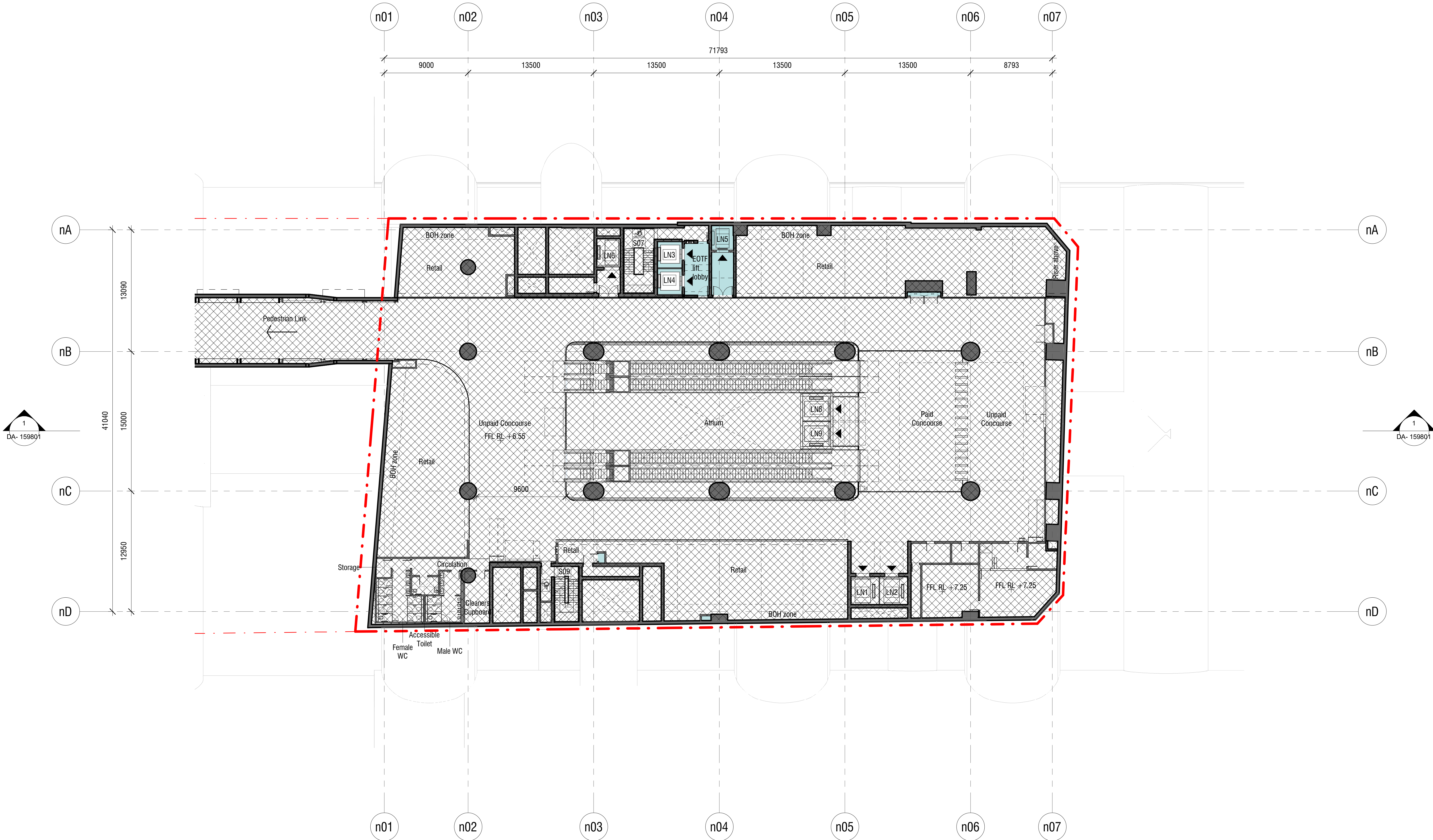
Drawing Title

**LEVEL B2 PLAN - END-OF-TRIP
FACILITY**

Status
STAGE II SSDA

Drawing Number
CSWSMP- MAC- SMN- AT- DRG- DA- 308200_D

Revision
D



Rev	App	Ckd	Revision or reason for issue	Date
0	AC	MC	STAGE II SSDA - DRAFT ISSUE	29.06.2018
1	AC	MC	STAGE II SSDA - DRAFT ISSUE	30.07.2018
2	AC	MC	STAGE II SSDA - DRAFT ISSUE	03.08.2018
3	AC	MC	STAGE II SSDA - DRAFT ISSUE	07.08.2018
4	AC	MC	STAGE II SSDA - DRAFT ISSUE	09.08.2018
A	AC	MC	STAGE II SSDA - DRAFT ISSUE	10.08.2018
B	AC	MC	STAGE II SSDA	23.08.2018

Legend
CSSI Areas (not for approval)
Site Boundary
SSDA areas below-ground

Scale / North Point

1:200 @ A1, 1:400 @ A3

0 2 4 6 10

General Notes

Do not scale from drawing. Use marked dimensions. To be read in conjunction with all other Consultant's drawings. The Architect to be immediately notified of any discrepancies. Copyright on this drawing retained by the Architect.

Notes

This architectural package describes metro-related areas. Refer to Tzannes for South OSD and JPW for North OSD.

CSSI detail is indicative and subject to separate approval.

Final OSD detail on station levels is subject to issue of the relevant construction certificate and approved Station Design and Precinct Plan

Street trees, furniture, and other public domain elements within the precinct are indicative only and are subject to relevant approvals and detailed coordination with new and existing underground utilities and infrastructure.

Authoring Organisation

GRIMSHAW

Grimshaw
Level 2, 333 George Street, Sydney
New South Wales 2000 Australia

Telephone +61 2 9253 0200
Email info@grimshaw-architects.com

Architect

**JPW
JOHNSON PILTON WALKER**

Johnson Pilton Walker Pty Ltd ACN 095 778 886
Level 10 Plaza Building Australia Square 95 Pitt Street Sydney
New South Wales 2000 Australia

Telephone +61 2 9259 5900
Email jpw@jpw.com.au

Project Title

**SYDNEY METRO MARTIN PLACE -
integrated station development**

Client
Macquarie Group Ltd
50 Martin Place, Sydney
New South Wales 2000 Australia

Telephone +61 2 8232 3333
Email: www.macquarie.com

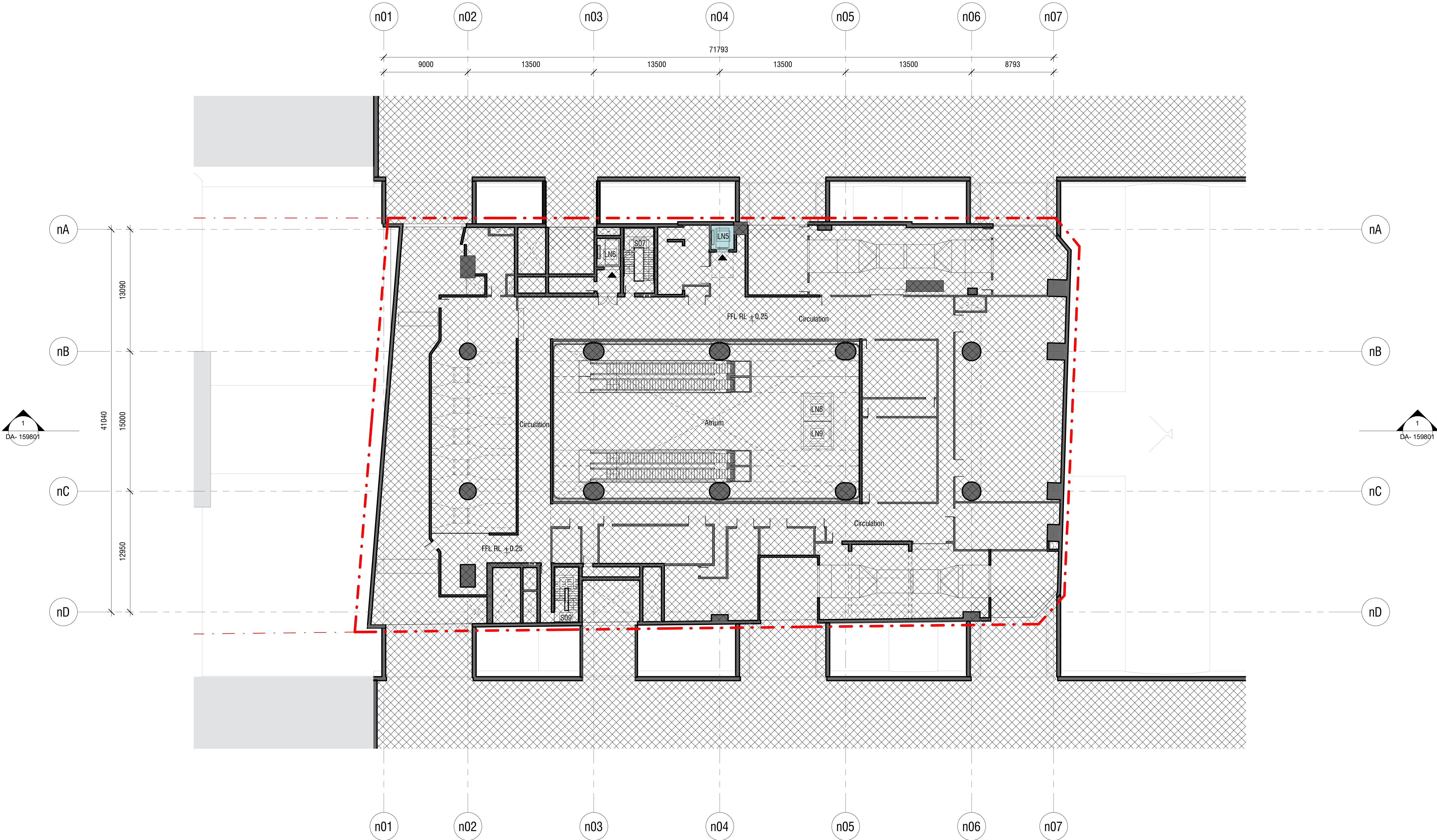
Drawing Title

**LEVEL B3 PLAN - METRO STATION
CONCOURSE**

Status
STAGE II SSDA

Drawing Number
CSWSMP- MAC- SMN- AT- DRG- DA- 308300_B

Revision
B



Rev	App	Ckd	Revision or reason for issue	Date
0	AC	MC	STAGE II SSDA - DRAFT ISSUE	29.06.2018
1	AC	MC	STAGE II SSDA - DRAFT ISSUE	30.07.2018
2	AC	MC	STAGE II SSDA - DRAFT ISSUE	03.08.2018
3	AC	MC	STAGE II SSDA - DRAFT ISSUE	09.08.2018
A	AC	MC	STAGE II SSDA - DRAFT ISSUE	10.08.2018
B	AC	MC	STAGE II SSDA	23.08.2018

Legend
CSSI Areas (not for approval)
Site Boundary
SSDA areas below-ground

Scale / North Point

1:200 @ A1, 1:400 @ A3

0 2 4 6 10

General Notes

Do not scale from drawing. Use marked dimensions. To be read in conjunction with all other Consultant's drawings. The Architect to be immediately notified of any discrepancies. Copyright on this drawing retained by the Architect.

Notes

This architectural package describes metro-related areas. Refer to Tzannes for South OSD and JPW for North OSD.

CSSI detail is indicative and subject to separate approval.

Final OSD detail on station levels is subject to issue of the relevant construction certificate and approved Station Design and Precinct Plan

Street trees, furniture, and other public domain elements within the precinct are indicative only and are subject to relevant approvals and detailed coordination with new and existing underground utilities and infrastructure.

Authoring Organisation

GRIMSHAW

Grimshaw
Level 2, 333 George Street, Sydney
New South Wales 2000 Australia

Telephone +61 2 9253 0200
Email info@grimshaw-architects.com

Architect

**JPW
JOHNSON PILTON WALKER**

Johnson Pilton Walker Pty Ltd ACN 095 778 886
Level 10 Plaza Building Australia Square 95 Pitt Street Sydney
New South Wales 2000 Australia

Telephone +61 2 9259 5900
Email jpw@jpw.com.au

Project Title

**SYDNEY METRO MARTIN PLACE -
integrated station development**

Client
Macquarie Group Ltd
50 Martin Place, Sydney
New South Wales 2000 Australia

Telephone +61 2 8232 3333
Email www.macquarie.com

Drawing Title

**LEVEL B4 PLAN - METRO STATION
STATION PLANT**

Status
STAGE II SSDA

Drawing Number
CSWSMP- MAC- SMN- AT- DRG- DA- 308400 _B

Revision
B



Rev	App	Ckd	Revision or reason for issue	Date
0	AC	MC	STAGE II SSDA - DRAFT ISSUE	29.06.2018
1	AC	MC	STAGE II SSDA - DRAFT ISSUE	30.07.2018
2	AC	MC	STAGE II SSDA - DRAFT ISSUE	03.08.2018
3	AC	MC	STAGE II SSDA - DRAFT ISSUE	09.08.2018
A	AC	MC	STAGE II SSDA - DRAFT ISSUE	10.08.2018
B	AC	MC	STAGE II SSDA	23.08.2018

Legend
CSSI Areas (not for approval)
Site Boundary
SSDA areas below-ground

Scale / North Point

1:200 @ A1, 1:400 @ A3

0 2 4 6 10

General Notes

Do not scale from drawing. Use marked dimensions. To be read in conjunction with all other Consultant's drawings. The Architect to be immediately notified of any discrepancies. Copyright on this drawing retained by the Architect.

Notes

This architectural package describes metro-related areas. Refer to Tzannes for South OSD and JPW for North OSD.

CSSI detail is indicative and subject to separate approval.

Final OSD detail on station levels is subject to issue of the relevant construction certificate and approved Station Design and Precinct Plan

Street trees, furniture, and other public domain elements within the precinct are indicative only and are subject to relevant approvals and detailed coordination with new and existing underground utilities and infrastructure.

Authoring Organisation

GRIMSHAW

Grimshaw
Level 2, 333 George Street, Sydney
New South Wales 2000 Australia

Telephone +61 2 9253 0200
Email info@grimshaw-architects.com

Architect

**JPW
JOHNSON PILTON WALKER**

Johnson Pilton Walker Pty Ltd ACN 095 778 886
Level 10 Plaza Building Australia Square 95 Pitt Street Sydney
New South Wales 2000 Australia

Telephone +61 2 9259 5900
Email jpw@jpw.com.au

Project Title

**SYDNEY METRO MARTIN PLACE -
Integrated station development**

Client

Macquarie Group Ltd
50 Martin Place, Sydney
New South Wales 2000 Australia

Telephone +61 2 8232 3333
Email: www.macquarie.com

Drawing Title

**LEVEL B5 PLAN - METRO STATION
PLATFORM**

Status

STAGE II SSDA

Drawing Number

CSWSMP- MAC- SMN- AT- DRG- DA- 308500_B

Revision

B

Rev	App	Ckd	Revision or reason for Issue
A	PB	PVR	Stage 2 DA Draft
B	PB	PVR	Stage 2 DA Draft
C	PB	PVR	Stage 2 DA Draft
D	PB	PVR	Stage 2 DA
E	PB	PVR	Stage 2 DA
F	PB	PVR	Stage 2 DA
G	PB	PVR	Stage 2 DA
H	PB	PVR	Response to Submissions
J	PB	PVR	Response to Submissions
K	PB	PVR	Response to Submissions

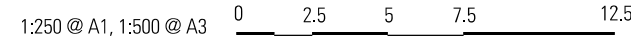
Date	Legend
29-06-18	METAL Metal panel cladding (composite aluminium), metallic powder coated finish colour to match S0 NP bronze
06-07-18	
18-07-18	MET63 Shop front mullion over clad with bronze sheet
03-08-18	MET10-300 Extruded aluminium cladding, custom anodised finish, bronze appearance. 500 depth, 150 width
07-08-18	EXTRU Extruded aluminium cladding, custom anodised finish, bronze appearance. 500 depth, 150 width
22-08-18	MET112 Aluminium cladding, extrusion, custom anodised finish, bronze appearance
27-08-18	
08-03-19	MET12 Aluminium louvers, extrusion, custom anodised finish, bronze appearance
29-03-19	ST20 Red granite

Final OSD detail on station levels is certificate and approved Station De

CSSI detail is indicative and subject to separate approval.

Final OSD detail on station levels is subject to issue of the relevant construction certificate and approved Station Design and Precinct Plan.

Scale / North Point



General Note:

Do not scale from drawing. Use marked dimensions. To be read in conjunction with all other Consultant's drawings. The Architect to be immediately notified of any discrepancies. Copyright on this drawing retained by the Architect.

Notes

This architectural package describes the North Tower. Refer to Grimshaw for Metro and Tzannes for South Tower

Disclaime

Street trees, furniture and other public domain elements within the precinct are indicative only and are subject to relevant approvals and detailed coordination with new and existing underground utilities and infrastructure.

Authoring Organisation

GRIMSHAW

Grimshaw
Level 9, 222 George Street, Sydney

Telephone ++61 2 9253 0200
Email info@grimshaw-architects.com

Architect

JOHNSON PILTON WALKER

Johnson Pilton Walker Pty Ltd ACN 095 778 886
Level 10 Plaza Building Australia Square 95 Pitt Street Sydney

Telephone +61 2 9259 5900
Email jpw@jpw.com.au

Project Title

integrated station development



Client
Macquarie Group Ltd
50 Martin Place, Sydney
New South Wales 2000 Australia

Telephone +61 2 8232 333
Email: www.macquarie.com

Drawing Title

SYDNEY METRO - MARTIN PLACE
EAST ELEVATION
GENERAL ARRANGEMENT

Status	Revision
--------	----------

Drawing Number

CSWSMP-MAC-SMN-AT-DRG-DA-409900

Rev	App	Ckd	Revision or reason for issue
A	PB	PVR	Stage 2 DA Draft
B	PB	PVR	Stage 2 DA Draft
C	PB	PVR	Stage 2 DA Draft
D	PB	PVR	Stage 2 DA
E	PB	PVR	Stage 2 DA
F	PB	PVR	Stage 2 DA
G	PB	PVR	Stage 2 DA
H	PB	PVR	Response to Submissions
J	PB	PVR	Response to Submissions
K	PB	PVR	Response to Submissions

Date	Legend
29-06-18	[MET1] Metal panel cladding (composite aluminium), metallic powder coated finish, colour to match SS MP bronze
06-07-18	[MET6] Shop front mullion over clad with bronze sheet
18-07-18	[MET10-300] Extruded aluminium cladding fins, custom anodised finish, bronze appearance, 300 deep, 150 wide
03-08-18	[MET10-600] Extruded aluminium cladding fins, custom anodised finish, bronze appearance, 600 deep, 150 wide
07-08-18	[MET11] Aluminium cladding, extrusion, custom anodised finish, bronze appearance
08-08-18	[MET12] Aluminium louvers, extrusion, custom anodised finish, bronze appearance
22-08-18	[ST20] Red granite
28-02-19	[ST21] Red granite - fluted

[CS] CS SI Areas (not for approval)
CS SI detail is indicative and subject to separate approval.

Scale / North Point

1:250 @ A1, 1:500 @ A3

0 2.5 5 7.5 12.5

General Notes

Do not scale from drawing. Use marked dimensions. To be read in conjunction with all other Consultant's drawings. The Architect to be immediately notified of any discrepancies. Copyright on this drawing retained by the Architect.

Notes

This architectural package describes the North Tower. Refer to Grimshaw for Metro and Trains for South Tower

Disclaimer

Street trees, furniture and other public domain elements within the precinct are indicative only and are subject to relevant approvals and detailed coordination with new and existing underground utilities and infrastructure.

Authoring Organisation

GRIMSHAW

Grimshaw
Level 2, 333 George Street, Sydney
New South Wales 2000 Australia

Telephone ++ +61 2 9253 0200
Email info@grimshaw-architects.com

Architect

**JPW
JOHNSON PILTON WALKER**

Johnson Pilton Walker Pty Ltd ACN 095 778 886
Level 10 Plaza Building Australia Square 95 Pitt Street Sydney
New South Wales 2000 Australia

Telephone ++ +61 2 9259 5900
Email jpw@jpw.com.au

Project Title

**SYDNEY METRO MARTIN PLACE -
integrated station development**

Client
Macquarie Group Ltd
50 Martin Place, Sydney
New South Wales 2000 Australia

Telephone ++ +61 2 8232 3333
Email: www.macquarie.com



Drawing Title

**SYDNEY METRO - MARTIN PLACE
NORTH ELEVATION
GENERAL ARRANGEMENT**

Status
STAGE II SS DA

Drawing Number
CSWSMP-MAC-SMN-AT-DRG-DA-409901

Revision
K

BOUNDARY

na

nb

nc

nd

BOUNDARY

SIGNAGE ZONE IN
FRONT OF PLANT ROOM
SHOWN DASHED

na

nb

nc

nd

BOUNDARY

39 PLANT

FR [184.29] SSL [179.14]

5150

38 PLANT

FR [179.14] SSL [179.14]

4050

37

FR [175.09] SSL [170.84]

3900

36

FR [171.19] SSL [170.84]

3900

35

FR [167.29] SSL [166.94]

3900

34

FR [163.39] SSL [163.04]

3900

33

FR [159.49] SSL [159.14]

3900

32

FR [155.59] SSL [155.24]

3900

31

FR [151.69] SSL [151.34]

3900

30

FR [147.79] SSL [147.44]

3900

29

FR [143.89] SSL [143.54]

3900

28 PLANT

FR [138.39] SSL [138.04]

5500

27

FR [134.39] SSL [134.04]

4000

26

FR [130.49] SSL [130.14]

3900

25

FR [126.59] SSL [126.24]

3900

24

FR [122.69] SSL [122.34]

3900

23

FR [118.79] SSL [118.44]

3900

22

FR [114.89] SSL [114.64]

3900

21

FR [110.99] SSL [110.64]

3900

20

FR [107.09] SSL [106.74]

3900

19

FR [103.19] SSL [102.84]

3900

18

FR [99.29] SSL [98.94]

3900

17

FR [95.39] SSL [95.04]

3900

16

FR [91.49] SSL [91.14]

3900

15 PLANT

FR [85.99] SSL [85.64]

5500

14

FR [81.99] SSL [81.64]

4000

13

FR [78.09] SSL [77.74]

3900

12

FR [74.19] SSL [73.84]

3900

11

FR [70.29] SSL [69.94]

3900

10 TERRACE FFL [66.39] (50MP FFL) SS [66.04]

3900

9

FR [62.49] SSL [62.14]

3900

8

FR [58.59] SSL [58.24]

3900

7

FR [54.69] SSL [54.34]

3900

6

FR [50.79] SSL [50.44]

3900

5

FR [46.89] SSL [46.54]

3900

4

FR [42.99] SSL [42.64]

3900

3

FR [39.09] SSL [38.74]

3900

2

FR [35.19] SSL [35.14]

3900

1

FR [31.29] SSL [31.24]

3900

G

FR [25.00] SSL [24.95]

6230

IG

FR [20.00] SSL [19.95]

6230

CASTLEREAGH STREET

NORTH TOWER

ELIZABETH STREET

Rev	App	Ckd	Revision or reason for issue
A	PB	PVR	Stage 2 DA Draft
B	PB	PVR	Stage 2 DA Draft
C	PB	PVR	Stage 2 DA Draft
D	PB	PVR	Stage 2 DA
E	PB	PVR	Stage 2 DA
F	PB	PVR	Stage 2 DA

Date

29-06-18

06-07-18

18-07-18

03-08-18

07-08-18

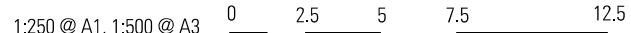
22-08-18

Legend	
MET1	Metal panel cladding (composite aluminium, metallic powder coated finish colour to match S1016 bronze)
MET6	Shop front mullion over clad with bronze sheet
MET10-301	Extruded aluminium cladding on fins, custom anodised finish, bronze appearance, 300 deep, 150 wide
MET10-302	Extruded aluminium cladding on fins, custom anodised finish, bronze appearance, 600 deep, 150 wide
MET11	Aluminium cladding, extrusion, custom anodised finish, bronze appearance
MET12	Aluminium louvres, extrusion, custom anodised finish, bronze appearance
ST20	Red granite
ST21	Red granite - fluted

 CSSI Areas (not for approval)

Final OSD detail on station levels is subject to issue of the relevant construction certificate and approved Station Design and Precinct Plan.

Scale / North Point



General Notes

Do not scale from drawing. Use marked dimensions. To be read in conjunction with all other Consultant's drawings. The Architect to be immediately notified of any discrepancies. Copyright on this drawing retained by the Architect.

Notes

This architectural package describes the North Tower. Refer to Grimshaw for Metro and Tzannes for South Tower

Disclaimer

Street trees, furniture and other public domain elements within the precinct are indicative only and are subject to relevant approvals and detailed coordination with new and existing underground utilities and infrastructure.

Authoring Organisation

GRIMSHAW

Grimshaw
Level 2, 333 George Street, Sydney
New South Wales 2000 Australia

Telephone ++61 2 9253 0200
Email info@grimshaw-architects.com

Architect

JPW
JOHNSON PILTON WALKER

Johnson Pilton Walker Pty Ltd ACN 095 778 886
Level 10 Plaza Building Australia Square 95 Pitt Street Sydney
New South Wales 2000 Australia

Telephone +61 2 9259 5900
Email jpw@jpw.com.au

Project Title

SYDNEY METRO MARTIN PLACE -
integrated station development



Client
Macquarie Group Ltd
50 Martin Place, Sydney
New South Wales 2000 Australia

Telephone +61 2 8232 333
Email: www.macquarie.com

Drawing Title

SYDNEY METRO - MARTIN PLACE
SOUTH ELEVATION
GENERAL ARRANGEMENT

Status

Drawing Number
CSWSMP-MAC-SMN-AT-DRG-DA-409903

Rev	App	Ckd	Revision or reason for issue
A	PB	PVR	Stage 2 DA Draft
B	PB	PVR	Stage 2 DA Draft
C	PB	PVR	Stage 2 DA Draft
D	PB	PVR	Stage 2 DA
E	PB	PVR	Stage 2 DA
F	PB	PVR	Stage 2 DA
G	PB	PVR	Stage 2 DA
H	PB	PVR	Stage 2 DA

Date	Legend
29-06-18	MET1 Metal panel cladding (composite aluminium), metallic powder coated finish, colour to match 50 MP bronze
06-07-18	MET6 Shop front mullion over clad with bronze sheet
18-07-18	MET10-300 Extruded aluminium cladding fins, custom anodised finish, bronze appearance, 300 deep, 150 webs
03-08-18	MET10-600 Extruded aluminium cladding fins, custom anodised finish, bronze appearance, 600 deep, 150 webs
07-08-18	MET11 Aluminium cladding, extrusion, custom anodised finish, bronze appearance
08-08-18	MET12 Aluminium louvers, extrusion, custom anodised finish, bronze appearance
13-08-18	ST20 Red granite
22-08-18	ST21 Red granite - fluted

CSA Areas (not for approval)

CSA detail is indicative and subject to separate approval.

Final OSD detail on station levels is subject to issue of the relevant construction certificate and approved Station Design and Precinct Plan.

Scale / North Point

1:250 @ A1, 1:500 @ A3

General Notes

Do not scale from drawing. Use marked dimensions. To be read in conjunction with all other Consultant's drawings. The Architect to be immediately notified of any discrepancies. Copyright on this drawing retained by the Architect.

Notes

This architectural package describes the North Tower. Refer to Grimshaw for Metro and Trammes for South Tower

Disclaimer

Street trees, furniture and other public domain elements within the precinct are indicative only and are subject to relevant approvals and detailed coordination with new and existing underground utilities and infrastructure.

Authoring Organisation

GRIMSHAW

Grimshaw
Level 2, 333 George Street, Sydney
New South Wales 2000 Australia

Telephone + +61 2 9253 0200
Email info@grimshaw-architects.com

Architect

**JPW
JOHNSON PILTON WALKER**

Johnson Pilton Walker Pty Ltd ACN 095 778 896
Level 10 Plaza Building Australia Square 95 Pitt Street Sydney
New South Wales 2000 Australia

Telephone +61 2 9259 5900
Email jpjw@jpjw.com.au

Project Title

**SYDNEY METRO MARTIN PLACE -
Integrated station development**



Client
Macquarie Group Ltd
50 Martin Place, Sydney
New South Wales 2000 Australia

Telephone +61 2 8232 3333
Email: www.macquarie.com

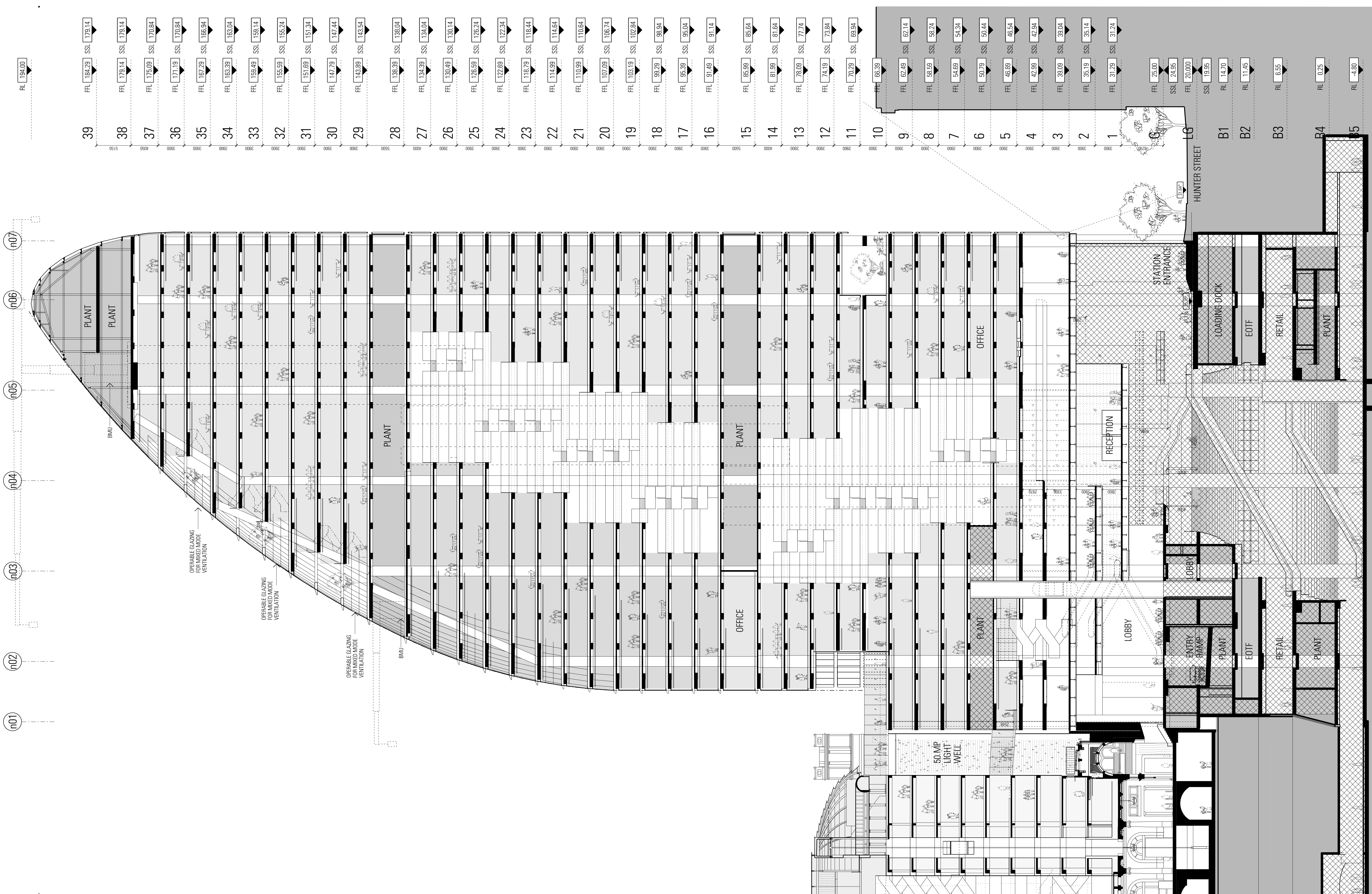
Drawing Title

**SYDNEY METRO - MARTIN PLACE
NORTH - SOUTH SECTION
GENERAL ARRANGEMENT**

Status
STAGE II SSDA

Drawing Number

CSWSMP-MAC-SMN-AT-DRG-DA-509900



Rev	App	Ckd	Revision or reason for issue
A	PB	PVR	Stage 2 DA Draft
B	PB	PVR	Stage 2 DA Draft
C	PB	PVR	Stage 2 DA Draft
D	PB	PVR	Stage 2 DA
E	PB	PVR	Stage 2 DA
F	PB	PVR	Stage 2 DA
G	PB	PVR	Stage 2 DA

Date	Legend
29-06-18	MET1 Metal panel cladding (composite aluminium), metallic powder coated finish, colour to match 50 MP bronze
06-07-18	MET6 Shop front mullion over clad with bronze sheet
18-07-18	MET10-300 Extruded aluminium cladding fins, custom anodised finish, bronze appearance, 300 deep, 150 wide
03-08-18	MET10-600 Extruded aluminium cladding fins, custom anodised finish, bronze appearance, 600 deep, 150 wide
07-08-18	MET11 Aluminium cladding, extrusion, custom anodised finish, bronze appearance
08-08-18	MET12 Aluminium louvers, extrusion, custom anodised finish, bronze appearance
22-08-18	ST20 Red granite
	ST21 Red granite - fluted

Final OSD detail on station levels is subject to issue of the relevant construction certificate and approved Station Design and Precinct Plan.

CSST Areas (not for approval)

CSST detail is indicative and subject to separate approval.

Scale / North Point

General Notes

Do not scale from drawing. Use marked dimensions. To be read in conjunction with all other Consultant's drawings. The Architect to be immediately notified of any discrepancies. Copyright on this drawing retained by the Architect.

Notes

This architectural package describes the North Tower. Refer to Grimshaw for Metro and Tzannes for South Tower

Disclaimer

Street trees, furniture and other public domain elements within the precinct are indicative only and are subject to relevant approvals and detailed coordination with new and existing underground utilities and infrastructure.

Authoring Organisation

GRIMSHAW

Grimshaw
Level 2, 333 George Street, Sydney
New South Wales 2000 Australia

Telephone ++ +61 2 9253 0200
Email info@grimshaw-architects.com

Architect

**JPW
JOHNSON PILTON WALKER**

Johnson Pilton Walker Pty Ltd ACN 095 778 886
Level 10 Plaza Building Australia Square 95 Pitt Street Sydney
New South Wales 2000 Australia

Telephone +61 2 9259 5900
Email jpw@jpw.com.au

Project Title

**SYDNEY METRO MARTIN PLACE -
Integrated station development**



Client
Macquarie Group Ltd
50 Martin Place, Sydney
New South Wales 2000 Australia

Telephone +61 2 8232 3333
Email: www.macquarie.com

Drawing Title

**SYDNEY METRO - MARTIN PLACE
EAST - WEST SECTION
GENERAL ARRANGEMENT**

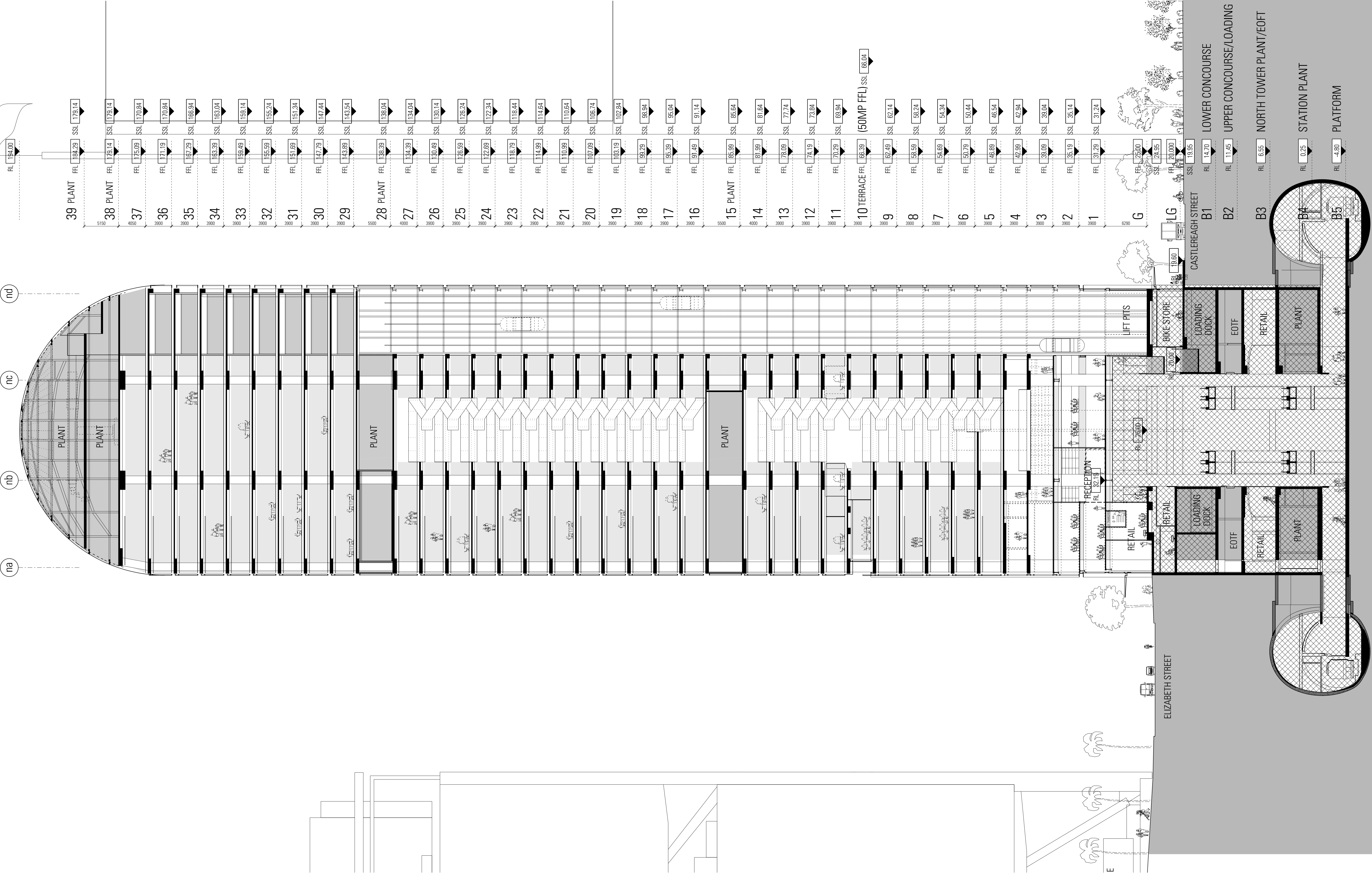
Status
STAGE II SSDA

Drawing Number

CSWSMP-MAC-SMN-AT-DRG-DA-509910

Revision

G



CSWSMP-MAC-SMN-AT-DRG-DA-519902.dwg
13:55:28 PM
12/05/2018

Rev	App	Ckd	Revision or reason for issue
A	PB	PVR	Stage 2 DA Draft
B	PB	PVR	Stage 2 DA Draft
C	PB	PVR	Stage 2 DA Draft
D	PB	PVR	Stage 2 DA
E	PB	PVR	Stage 2 DA
F	PB	PVR	Stage 2 DA
G	PB	PVR	Stage 2 DA Response to Submissions

Date	Legend
29-06-18	[MET1] Metal panel cladding (composite aluminium), metallic powder coated finish, colour to match 50 MP bronze
06-07-18	[MET6] Shop front mullion over clad with bronze sheet appearance, 300 deep, 150 wide
18-07-18	[MET10-300] Extruded aluminium cladding fins, custom anodised finish, bronze appearance, 300 deep, 150 wide
03-08-18	[MET10-600] Extruded aluminium cladding fins, custom anodised finish, bronze appearance, 600 deep, 150 wide
07-08-18	[MET11] Aluminium cladding, extrusion, custom anodised finish, bronze appearance
22-08-18	[MET12] Aluminium louvers, extrusion, custom anodised finish, bronze appearance
21-02-21	[ST20] Red granite
	[ST21] Red granite - fluted

CSA Areas (not for approval)

CSA detail is indicative and subject to separate approval.

Final OSD detail on station levels is subject to issue of the relevant construction certificate and approved Station Design and Precinct Plan.

Scale / North Point

1:200 @ A1, 1:400 @ A3

General Notes

Do not scale from drawing. Use marked dimensions. To be read in conjunction with all other Consultant's drawings. The Architect to be immediately notified of any discrepancies. Copyright on this drawing retained by the Architect.

Notes

This architectural package describes the North Tower. Refer to Grimshaw for Metro and Trains for South Tower

Disclaimer

Street trees, furniture and other public domain elements within the precinct are indicative only and are subject to relevant approvals and detailed coordination with new and existing underground utilities and infrastructure.

Authoring Organisation

GRIMSHAW

Grimshaw
Level 2, 333 George Street, Sydney
New South Wales 2000 Australia

Telephone ++ +61 2 9253 0200
Email info@grimshaw-architects.com

Architect

**JPW
JOHNSON PILTON WALKER**

Johnson Pilton Walker Pty Ltd ACN 095 778 886
Level 10 Plaza Building Australia Square 95 Pitt Street Sydney
New South Wales 2000 Australia

Telephone +61 2 9259 5900
Email jpjw@jpjw.com.au

Project Title

**SYDNEY METRO - MARTIN PLACE -
integrated station development**



Client
Macquarie Group Ltd
50 Martin Place, Sydney
New South Wales 2000 Australia

Telephone +61 2 8232 3333
Email: www.macquarie.com

Drawing Title

**SYDNEY METRO - MARTIN PLACE
EAST-WEST INTERNAL SECTION
GENERAL ARRANGEMENT**

Status Revision

STAGE II SSDA G

Drawing Number

CSWSMP-MAC-SMN-AT-DRG-DA-519902

APPENDIX 2

Drawing List — Demarcation Plans

Sheet Number	Sheet Name	Size	Scale	Revision
CSWSMP-MAC-SMA-AT-DRG-DA-000000	DEMARCATIION PLAN - COVER SHEET	A1	NTS	D
CSWSMP-MAC-SMA-AT-DRG-DA-398500	DEMARCATIION PLAN - B5 PLATFORM	A1	1:500	B
CSWSMP-MAC-SMA-AT-DRG-DA-398400	DEMARCATIION PLAN - B4 STATION PLANT	A1	1:500	B
CSWSMP-MAC-SMA-AT-DRG-DA-397010	DEMARCATIION PLAN - B4 MEZZANINE STATION PLANT	A1	1:500	B
CSWSMP-MAC-SMA-AT-DRG-DA-398300	DEMARCATIION PLAN - B3 PLANT / CONCOURSE	A1	1:500	B
CSWSMP-MAC-SMA-AT-DRG-DA-398200	DEMARCATIION PLAN - B2 LOWER CONCOURSE / EOTF	A1	1:500	B
CSWSMP-MAC-SMA-AT-DRG-DA-398100	DEMARCATIION PLAN - B1 UPPER CONCOURSE / SERVICE YARD	A1	1:500	B
CSWSMP-MAC-SMA-AT-DRG-DA-398000	DEMARCATIION PLAN - LOWER GROUND (CASTLEREAGH STREET)	A1	1:500	B
CSWSMP-MAC-SMA-AT-DRG-DA-390000	DEMARCATIION PLAN - GROUND FLOOR (ELIZABETH STREET)	A1	1:500	B
CSWSMP-MAC-SMA-AT-DRG-DA-396010	DEMARCATIION PLAN - MEZZANINE	A1	1:500	B
CSWSMP-MAC-SMA-AT-DRG-DA-390100	DEMARCATIION PLAN - LEVEL 01	A1	1:500	B
CSWSMP-MAC-SMA-AT-DRG-DA-390200	DEMARCATIION PLAN - LEVEL 02	A1	1:500	B
CSWSMP-MAC-SMA-AT-DRG-DA-390300	DEMARCATIION PLAN - LEVEL 03	A1	1:500	C
CSWSMP-MAC-SMA-AT-DRG-DA-390400	DEMARCATIION PLAN - LEVEL 04	A1	1:500	B
CSWSMP-MAC-SMA-AT-DRG-DA-390500	DEMARCATIION PLAN - LEVEL 05	A1	1:500	B
CSWSMP-MAC-SMA-AT-DRG-DA-390600	DEMARCATIION PLAN - LEVEL 06	A1	1:500	C
CSWSMP-MAC-SMA-AT-DRG-DA-390700	DEMARCATIION PLAN - LEVEL 07	A1	1:500	D
CSWSMP-MAC-SMA-AT-DRG-DA-159891	DEMARCATIION SECTION - N-S SECTION	A1	1:500	E