

Rev	App	Ckd	Revision or reason for issue	Date	Legend
A	PB	PVR	Stage 2 DA Draft	29-06-18	
B	PB	PVR	Stage 2 DA Draft	06-07-18	
C	PB	PVR	Stage 2 DA Draft	18-07-18	
D	PB	PVR	Stage 2 DA	03-08-18	
E	PB	PVR	Stage 2 DA	07-08-18	
F	PB	PVR	Stage 2 DA	22-08-18	

CSST Areas (not for approval)

CSST detail is indicative and subject to separate approval.

Final OSD detail on station levels is subject to issue of the relevant construction certificate and approved Station Design and Precinct Plan.

Scale / North Point

1:200 @ A1, 1:400 @ A3

General Notes

Do not scale from drawing. Use marked dimensions. To be read in conjunction with all other Consultant's drawings. The Architect to be immediately notified of any discrepancies. Copyright on this drawing retained by the Architect.

Notes

This architectural package describes the North Tower. Refer to Grimshaw for Metro and Tzannes for South Tower

Disclaimer

Street trees, furniture and other public domain elements within the precinct are indicative only and are subject to relevant approvals and detailed coordination with new and existing underground utilities and infrastructure.

Authoring Organisation

GRIMSHAW

Grimshaw
Level 2, 333 George Street, Sydney
New South Wales 2000 Australia

Telephone ++ +61 2 9253 0200
Email info@grimshaw-architects.com

Architect

**JPW
JOHNSON PILTON WALKER**

Johnson Pilton Walker Pty Ltd ACN 095 778 886
Level 10 Plaza Building Australia Square 95 Pitt Street Sydney
New South Wales 2000 Australia

Telephone +61 2 9259 5900
Email jpw@jpw.com.au

Project Title

**SYDNEY METRO MARTIN PLACE -
integrated station development**



Client
Macquarie Group Ltd
50 Martin Place, Sydney
New South Wales 2000 Australia

Telephone +61 2 8232 3333
Email: www.macquarie.com

Drawing Title

**SYDNEY METRO - MARTIN PLACE
LEVEL 10 PLAN
GENERAL ARRANGEMENT**

Status

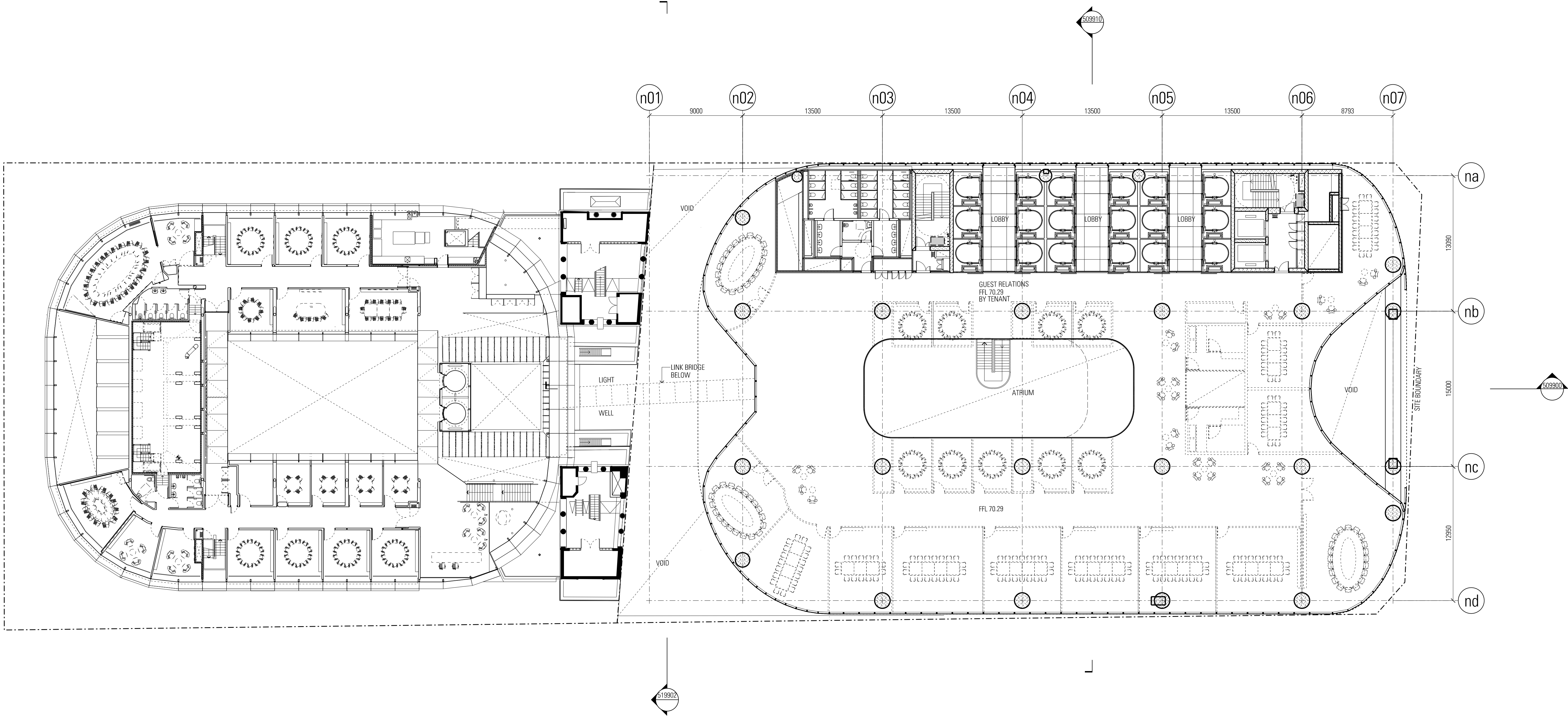
STAGE II SSDA

Drawing Number

CSWSMP-MAC-SMN-AT-DRG-DA-301000

Revision

F



Rev	App	Ckd	Revision or reason for issue	Date	Legend
A	PB	PVR	Stage 2 DA Draft	29-06-18	
B	PB	PVR	Stage 2 DA Draft	06-07-18	
C	PB	PVR	Stage 2 DA Draft	16-07-18	
D	PB	PVR	Stage 2 DA	03-08-18	
E	PB	PVR	Stage 2 DA	07-08-18	
F	PB	PVR	Stage 2 DA	22-08-18	

CSST Areas (not for approval)

CSST detail is indicative and subject to separate approval.

Final OSD detail on station levels is subject to issue of the relevant construction certificate and approved Station Design and Precinct Plan.

Scale / North Point

1:200 @ A1, 1:400 @ A3

General Notes

Do not scale from drawing. Use marked dimensions. To be read in conjunction with all other Consultant's drawings. The Architect to be immediately notified of any discrepancies. Copyright on this drawing retained by the Architect.

Notes

This architectural package describes the North Tower. Refer to Grimshaw for Metro and Tzannes for South Tower

Disclaimer

Street trees, furniture and other public domain elements within the precinct are indicative only and are subject to relevant approvals and detailed coordination with new and existing underground utilities and infrastructure.

Authoring Organisation

GRIMSHAW

Grimshaw
Level 2, 333 George Street, Sydney
New South Wales 2000 Australia

Telephone ++ +61 2 9253 0200
Email info@grimshaw-architects.com

Architect

**JPW
JOHNSON PILTON WALKER**

Johnson Pilton Walker Pty Ltd ACN 095 778 886
Level 10 Plaza Building Australia Square 95 Pitt Street Sydney
New South Wales 2000 Australia

Telephone +61 2 9259 5900
Email jpw@jpw.com.au

Project Title

**SYDNEY METRO MARTIN PLACE -
integrated station development**



Client
Macquarie Group Ltd
50 Martin Place, Sydney
New South Wales 2000 Australia

Telephone +61 2 8232 3333
Email: www.macquarie.com

Drawing Title

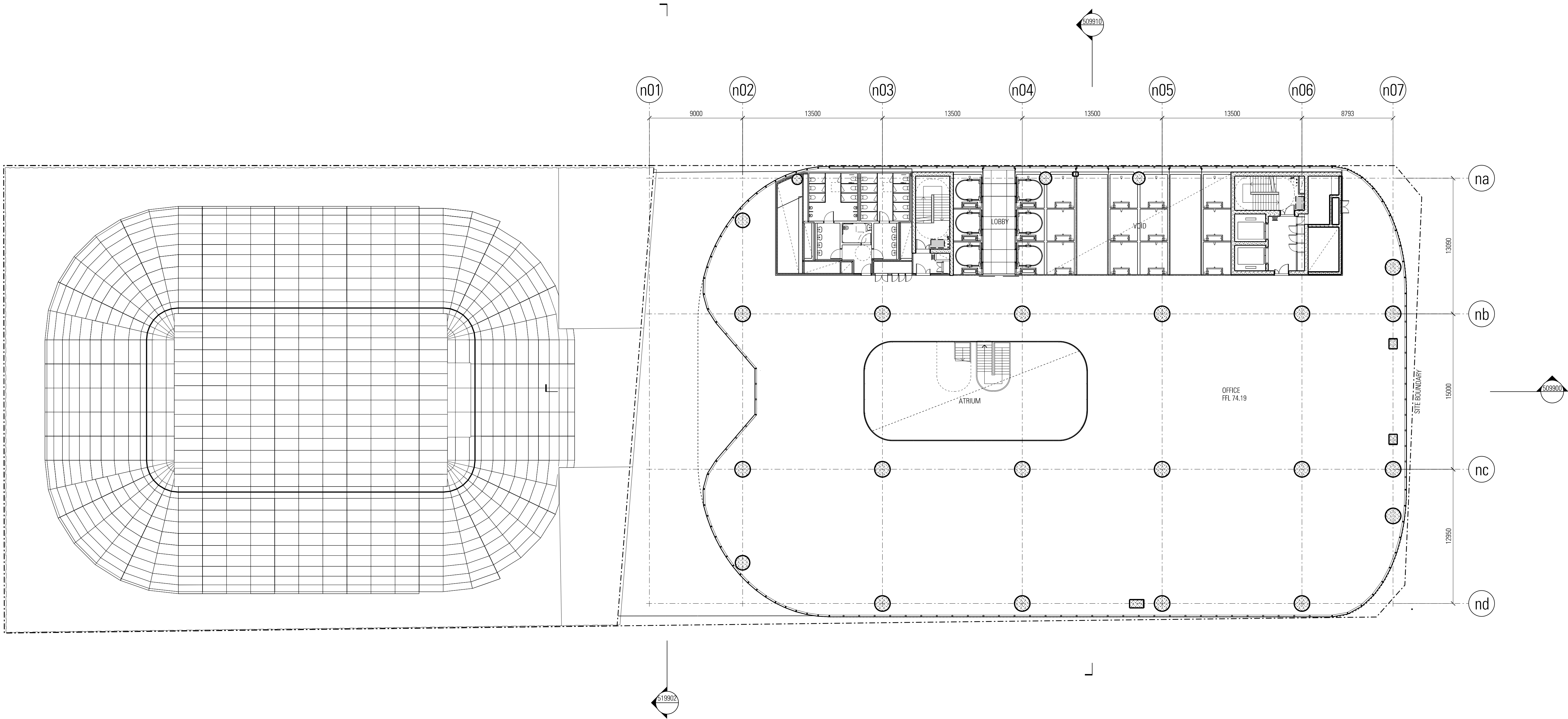
**SYDNEY METRO - MARTIN PLACE
LEVEL 11 PLAN
GENERAL ARRANGEMENT**

Status Revision

STAGE II SSDA F

Drawing Number

CSWSMP-MAC-SMN-AT-DRG-DA-301100



Rev	App	Ckd	Revision or reason for issue	Date	Legend
A	PB	PVR	Stage 2 DA Draft	29-06-18	
B	PB	PVR	Stage 2 DA Draft	08-07-18	
C	PB	PVR	Stage 2 DA Draft	18-07-18	
D	PB	PVR	Stage 2 DA	03-08-18	
E	PB	PVR	Stage 2 DA	07-08-18	
F	PB	PVR	Stage 2 DA	22-08-18	

CSST Areas (not for approval)

CSST detail is indicative and subject to separate approval.

Final OSD detail on station levels is subject to issue of the relevant construction certificate and approved Station Design and Precinct Plan.

Scale / North Point

1:200 @ A1, 1:400 @ A3

General Notes

Do not scale from drawing. Use marked dimensions. To be read in conjunction with all other Consultant's drawings. The Architect to be immediately notified of any discrepancies. Copyright on this drawing retained by the Architect.

Notes

This architectural package describes the North Tower. Refer to Grimshaw for Metro and Tzannes for South Tower

Disclaimer

Street trees, furniture and other public domain elements within the precinct are indicative only and are subject to relevant approvals and detailed coordination with new and existing underground utilities and infrastructure.

Authoring Organisation

GRIMSHAW

Grimshaw
Level 2, 333 George Street, Sydney
New South Wales 2000 Australia

Telephone ++ 61 2 9253 0200
Email info@grimshaw-architects.com

Architect

**JPW
JOHNSON PILTON WALKER**

Johnson Pilton Walker Pty Ltd ACN 095 778 886
Level 10 Plaza Building Australia Square 95 Pitt Street Sydney
New South Wales 2000 Australia

Telephone +61 2 9259 5900
Email jp@jp.com.au

Project Title

**SYDNEY METRO MARTIN PLACE -
integrated station development**



Client
Macquarie Group Ltd
50 Martin Place, Sydney
New South Wales 2000 Australia

Telephone +61 2 8232 3333
Email: www.macquarie.com

Drawing Title

**SYDNEY METRO - MARTIN PLACE
LEVEL 12 PLAN
GENERAL ARRANGEMENT**

Status
STAGE II SSDA

Drawing Number

CSWSMP-MAC-SMN-AT-DRG-DA-301200

Revision

F

Rev	App	Ckd	Revision or reason for issue	Date	Legend
A	PB	PVR	Stage 2 DA Draft	29-06-18	
B	PB	PVR	Stage 2 DA Draft	06-07-18	
C	PB	PVR	Stage 2 DA Draft	18-07-18	
D	PB	PVR	Stage 2 DA	03-08-18	
E	PB	PVR	Stage 2 DA	07-08-18	
F	PB	PVR	Stage 2 DA	22-08-18	

CSA Areas (not for approval)

CSA detail is indicative and subject to separate approval.

Final OSD detail on station levels is subject to issue of the relevant construction certificate and approved Station Design and Precinct Plan.

Scale / North Point

1:200 @ A1, 1:400 @ A3

General Notes

Do not scale from drawing. Use marked dimensions. To be read in conjunction with all other Consultant's drawings. The Architect to be immediately notified of any discrepancies. Copyright on this drawing retained by the Architect.

Notes

This architectural package describes the North Tower. Refer to Grimshaw for Metro and Tzannes for South Tower

Disclaimer

Street trees, furniture and other public domain elements within the precinct are indicative only and are subject to relevant approvals and detailed coordination with new and existing underground utilities and infrastructure.

Authoring Organisation

GRIMSHAW

Grimshaw
Level 2, 333 George Street, Sydney
New South Wales 2000 Australia

Telephone + +61 2 9253 0200
Email info@grimshaw-architects.com

Architect

**JPW
JOHNSON PILTON WALKER**

Johnson Pilton Walker Pty Ltd ACN 095 778 886
Level 10 Plaza Building Australia Square 95 Pitt Street Sydney
New South Wales 2000 Australia

Telephone +61 2 9259 5900
Email jpw@jpw.com.au

Project Title

**SYDNEY METRO MARTIN PLACE -
integrated station development**



Client
Macquarie Group Ltd
50 Martin Place, Sydney
New South Wales 2000 Australia

Telephone +61 2 8232 3333
Email: www.macquarie.com

Drawing Title

**SYDNEY METRO - MARTIN PLACE
LEVEL 13 PLAN
GENERAL ARRANGEMENT**

Status Revision

STAGE II SSDA **F**


Drawing Number

CSWSMP-MAC-SMN-AT-DRG-DA-301300

CSWSMP-MAC-SMN-AT-DRG-DA-301400.dwg
22/08/2018 14:00:00
22/08/2018

Rev	App	Ckd	Revision or reason for issue	Date
A	PB	PVR	Stage 2 DA Draft	29-06-18
B	PB	PVR	Stage 2 DA Draft	06-07-18
C	PB	PVR	Stage 2 DA Draft	18-07-18
D	PB	PVR	Stage 2 DA	03-08-18
E	PB	PVR	Stage 2 DA	07-08-18
F	PB	PVR	Stage 2 DA	22-08-18

Legend

 CSSI Areas (not for approval)

CSSI detail is indicative and subject to separate approval.

Final OSD detail on station levels is subject to issue of the relevant construction certificate and approved Station Design and Precinct Plan.

Scale / North Point

1:200 @ A1, 1:400 @ A3

General Notes

Do not scale from drawing. Use marked dimensions. To be read in conjunction with all other Consultant's drawings. The Architect to be immediately notified of any discrepancies. Copyright on this drawing retained by the Architect.

Notes

This architectural package describes the North Tower. Refer to Grimshaw for Metro and Tzannes for South Tower

Disclaimer

Street trees, furniture and other public domain elements within the precinct are indicative only and are subject to relevant approvals and detailed coordination with new and existing underground utilities and infrastructure.

Authoring Organisation

GRIMSHAW

Grimshaw
Level 2, 333 George Street, Sydney
New South Wales 2000 Australia

Telephone ++ 61 2 9253 0200
Email info@grimshaw-architects.com

Architect

**JPW
JOHNSON PILTON WALKER**

Johnson Pilton Walker Pty Ltd ACN 095 778 886
Level 10 Plaza Building Australia Square 95 Pitt Street Sydney
New South Wales 2000 Australia

Telephone +61 2 9259 5900
Email jpw@jpw.com.au

Project Title

**SYDNEY METRO MARTIN PLACE -
integrated station development**



Client
Macquarie Group Ltd
50 Martin Place, Sydney
New South Wales 2000 Australia

Telephone +61 2 8232 3333
Email: www.macquarie.com

Drawing Title

**SYDNEY METRO - MARTIN PLACE
LEVEL 14 PLAN
GENERAL ARRANGEMENT**

Status Revision

STAGE II SSDA F

Drawing Number

CSWSMP-MAC-SMN-AT-DRG-DA-301400

Rev	App	Ckd	Revision or reason for issue
A	PB	PVR	Stage 2 DA Draft
B	PB	PVR	Stage 2 DA Draft
C	PB	PVR	Stage 2 DA Draft
D	PB	PVR	Stage 2 DA
E	PB	PVR	Stage 2 DA
F	PB	PVR	Stage 2 DA

Date	Legend
29-06-18	
06-07-18	
16-07-18	
03-08-18	
07-08-18	
22-08-18	

CSWSMP-MAC-SMN-AT-DRG-DA-301500.dwg

CSWSMP-MAC-SMN-AT-DRG-DA-301500.dwg

CSWSMP-MAC-SMN-AT-DRG-DA-301500.dwg

CSWSMP-MAC-SMN-AT-DRG-DA-301500.dwg

CSWSMP-MAC-SMN-AT-DRG-DA-301500.dwg

CSWSMP-MAC-SMN-AT-DRG-DA-301500.dwg

CSWSMP-MAC-SMN-AT-DRG-DA-301500.dwg

CSWSMP-MAC-SMN-AT-DRG-DA-301500.dwg

CSWSMP-MAC-SMN-AT-DRG-DA-301500.dwg

CSWSMP-MAC-SMN-AT-DRG-DA-301500.dwg

CSWSMP-MAC-SMN-AT-DRG-DA-301500.dwg

CSWSMP-MAC-SMN-AT-DRG-DA-301500.dwg

CSWSMP-MAC-SMN-AT-DRG-DA-301500.dwg

CSWSMP-MAC-SMN-AT-DRG-DA-301500.dwg



CSWSMP-MAC-SMN-AT-DRG-DA-301500.dwg

CSWSMP-MAC-SMN-AT-DRG-DA-301500.dwg

Rev	App	Ckd	Revision or reason for issue	Date	Legend
A	PB	PVR	Stage 2 DA Draft	29-06-18	
B	PB	PVR	Stage 2 DA Draft	06-07-18	
C	PB	PVR	Stage 2 DA Draft	18-07-18	
D	PB	PVR	Stage 2 DA	03-08-18	
E	PB	PVR	Stage 2 DA	07-08-18	
F	PB	PVR	Stage 2 DA	22-08-18	

CSST Areas (not for approval)

CSST detail is indicative and subject to separate approval.

Final OSD detail on station levels is subject to issue of the relevant construction certificate and approved Station Design and Precinct Plan.

Scale / North Point

1:200 @ A1, 1:400 @ A3

General Notes

Do not scale from drawing. Use marked dimensions. To be read in conjunction with all other Consultant's drawings. The Architect to be immediately notified of any discrepancies. Copyright on this drawing retained by the Architect.

Notes

This architectural package describes the North Tower. Refer to Grimshaw for Metro and Tzannes for South Tower

Disclaimer

Street trees, furniture and other public domain elements within the precinct are indicative only and are subject to relevant approvals and detailed coordination with new and existing underground utilities and infrastructure.

Authoring Organisation

GRIMSHAW

Grimshaw
Level 2, 333 George Street, Sydney
New South Wales 2000 Australia

Telephone + +61 2 9253 0200
Email info@grimshaw-architects.com

Architect

**JPW
JOHNSON PILTON WALKER**

Johnson Pilton Walker Pty Ltd ACN 095 778 886
Level 10 Plaza Building Australia Square 95 Pitt Street Sydney
New South Wales 2000 Australia

Telephone +61 2 9259 5900
Email jpw@jpw.com.au

Project Title

**SYDNEY METRO - MARTIN PLACE -
integrated station development**



Client
Macquarie Group Ltd
50 Martin Place, Sydney
New South Wales 2000 Australia

Telephone +61 2 8232 3333
Email: www.macquarie.com

Drawing Title

**SYDNEY METRO - MARTIN PLACE
LEVEL 16 PLAN
GENERAL ARRANGEMENT**

Status Revision

STAGE II SSDA F

Drawing Number

CSWSMP-MAC-SMN-AT-DRG-DA-301600

Rev	App	Ckd	Revision or reason for issue	Date	Legend
A	PB	PVR	Stage 2 DA Draft	29-06-18	
B	PB	PVR	Stage 2 DA Draft	06-07-18	
C	PB	PVR	Stage 2 DA Draft	18-07-18	
D	PB	PVR	Stage 2 DA	03-08-18	
E	PB	PVR	Stage 2 DA	07-08-18	
F	PB	PVR	Stage 2 DA	22-08-18	

CSST Areas (not for approval)

CSST detail is indicative and subject to separate approval.

Final OSD detail on station levels is subject to issue of the relevant construction certificate and approved Station Design and Precinct Plan.

Scale / North Point

1:200 @ A1, 1:400 @ A3

General Notes
Do not scale from drawing. Use marked dimensions. To be read in conjunction with all other Consultant's drawings. The Architect to be immediately notified of any discrepancies. Copyright on this drawing retained by the Architect.

Notes

This architectural package describes the North Tower. Refer to Grimshaw for Metro and Trains for South Tower

Disclaimer

Street trees, furniture and other public domain elements within the precinct are indicative only and are subject to relevant approvals and detailed coordination with new and existing underground utilities and infrastructure.

Authoring Organisation

GRIMSHAW

Grimshaw
Level 2, 333 George Street, Sydney
New South Wales 2000 Australia

Telephone ++ 61 2 9253 0200
Email info@grimshaw-architects.com

Architect

**JPW
JOHNSON PILTON WALKER**

Johnson Pilton Walker Pty Ltd ACN 095 778 886
Level 10 Plaza Building Australia Square 95 Pitt Street Sydney
New South Wales 2000 Australia

Telephone +61 2 9259 5900
Email jpw@jpw.com.au

Project Title

**SYDNEY METRO MARTIN PLACE -
integrated station development**



Client
Macquarie Group Ltd
50 Martin Place, Sydney
New South Wales 2000 Australia

Telephone +61 2 8232 3333
Email: www.macquarie.com

Drawing Title

**SYDNEY METRO - MARTIN PLACE
LEVEL 17 PLAN
GENERAL ARRANGEMENT**

Status Revision

STAGE II SSDA F

Drawing Number

CSWSMP-MAC-SMN-AT-DRG-DA-301700

CSWSMP-MAC-SMN-AT-DRG-DA-301800.dwg
23/08/2018
2:33:39 PM

Rev	App	Ckd	Revision or reason for issue	Date
A	PB	PVR	Stage 2 DA Draft	29-06-18
B	PB	PVR	Stage 2 DA Draft	06-07-18
C	PB	PVR	Stage 2 DA Draft	18-07-18
D	PB	PVR	Stage 2 DA	03-08-18
E	PB	PVR	Stage 2 DA	07-08-18
F	PB	PVR	Stage 2 DA	22-08-18

Legend
CSST Areas (not for approval)

CSST detail is indicative and subject to separate approval.

Final OSD detail on station levels is subject to issue of the relevant construction certificate and approved Station Design and Precinct Plan.

Scale / North Point

1:200 @ A1, 1:400 @ A3

General Notes
Do not scale from drawing. Use marked dimensions. To be read in conjunction with all other Consultant's drawings. The Architect to be immediately notified of any discrepancies. Copyright on this drawing retained by the Architect.

Notes

This architectural package describes the North Tower. Refer to Grimshaw for Metro and Trains for South Tower

Disclaimer

Street trees, furniture and other public domain elements within the precinct are indicative only and are subject to relevant approvals and detailed coordination with new and existing underground utilities and infrastructure.

Authoring Organisation

GRIMSHAW

Grimshaw
Level 2, 333 George Street, Sydney
New South Wales 2000 Australia

Telephone ++ 61 2 9253 0200
Email info@grimshaw-architects.com

Architect

**JPW
JOHNSON PILTON WALKER**

Johnson Pilton Walker Pty Ltd ACN 095 778 886
Level 10 Plaza Building Australia Square 95 Pitt Street Sydney
New South Wales 2000 Australia

Telephone +61 2 9259 5900
Email jpw@jpw.com.au

Project Title

**SYDNEY METRO MARTIN PLACE -
integrated station development**



Client
Macquarie Group Ltd
50 Martin Place, Sydney
New South Wales 2000 Australia

Telephone +61 2 8232 3333
Email: www.macquarie.com

Drawing Title

**SYDNEY METRO - MARTIN PLACE
LEVEL 18 PLAN
GENERAL ARRANGEMENT**

Status Revision

STAGE II SSDA F

Drawing Number

CSWSMP-MAC-SMN-AT-DRG-DA-301800

Rev	App	Ckd	Revision or reason for issue	Date	Legend
A	PB	PVR	Stage 2 DA Draft	29-06-18	
B	PB	PVR	Stage 2 DA Draft	06-07-18	
C	PB	PVR	Stage 2 DA Draft	18-07-18	
D	PB	PVR	Stage 2 DA	03-08-18	
E	PB	PVR	Stage 2 DA	07-08-18	
F	PB	PVR	Stage 2 DA	22-08-18	

Date	Legend
29-06-18	
06-07-18	
18-07-18	
03-08-18	
07-08-18	
22-08-18	

CSST Areas (not for approval)

CSST detail is indicative and subject to separate approval.

Final OSD detail on station levels is subject to issue of the relevant construction certificate and approved Station Design and Precinct Plan.

Scale / North Point

1:200 @ A1, 1:400 @ A3

General Notes

Do not scale from drawing. Use marked dimensions. To be read in conjunction with all other Consultant's drawings. The Architect to be immediately notified of any discrepancies. Copyright on this drawing retained by the Architect.

Notes

This architectural package describes the North Tower. Refer to Grimshaw for Metro and Trains for South Tower

Disclaimer

Street trees, furniture and other public domain elements within the precinct are indicative only and are subject to relevant approvals and detailed coordination with new and existing underground utilities and infrastructure.

Authoring Organisation

GRIMSHAW

Grimshaw
Level 2, 333 George Street, Sydney
New South Wales 2000 Australia

Telephone + +61 2 9253 0200
Email info@grimshaw-architects.com

Architect

**JPW
JOHNSON PILTON WALKER**

Johnson Pilton Walker Pty Ltd ACN 095 778 886
Level 10 Plaza Building Australia Square 95 Pitt Street Sydney
New South Wales 2000 Australia

Telephone +61 2 9259 5900
Email jpww@jpww.com.au

Project Title

**SYDNEY METRO - MARTIN PLACE -
integrated station development**



Client
Macquarie Group Ltd
50 Martin Place, Sydney
New South Wales 2000 Australia

Telephone +61 2 8232 3333
Email: www.macquarie.com

Drawing Title

**SYDNEY METRO - MARTIN PLACE
LEVEL 19 PLAN
GENERAL ARRANGEMENT**

Status Revision

STAGE II SSDA F

Drawing Number

CSWSMP-MAC-SMN-AT-DRG-DA-301900

Rev	App	Ckd	Revision or reason for issue	Date
A	PB	PVR	Stage 2 DA Draft	29-06-18
B	PB	PVR	Stage 2 DA Draft	06-07-18
C	PB	PVR	Stage 2 DA Draft	18-07-18
D	PB	PVR	Stage 2 DA	03-08-18
E	PB	PVR	Stage 2 DA	07-08-18
F	PB	PVR	Stage 2 DA	22-08-18

Legend

CSST Areas (not for approval)

CSST detail is indicative and subject to separate approval.

Final OSD detail on station levels is subject to issue of the relevant construction certificate and approved Station Design and Precinct Plan.

Scale / North Point

1:200 @ A1, 1:400 @ A3

General Notes

Do not scale from drawing. Use marked dimensions. To be read in conjunction with all other Consultant's drawings. The Architect to be immediately notified of any discrepancies. Copyright on this drawing retained by the Architect.

Notes

This architectural package describes the North Tower. Refer to Grimshaw for Metro and Trains for South Tower

Disclaimer

Street trees, furniture and other public domain elements within the precinct are indicative only and are subject to relevant approvals and detailed coordination with new and existing underground utilities and infrastructure.

Authoring Organisation

GRIMSHAW

Grimshaw
Level 2, 333 George Street, Sydney
New South Wales 2000 Australia

Telephone ++ 61 2 9253 0200
Email info@grimshaw-architects.com

Architect

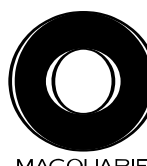
**JPW
JOHNSON PILTON WALKER**

Johnson Pilton Walker Pty Ltd ACN 095 778 886
Level 10 Plaza Building Australia Square 95 Pitt Street Sydney
New South Wales 2000 Australia

Telephone +61 2 9259 5900
Email jpw@jpw.com.au

Project Title

**SYDNEY METRO MARTIN PLACE -
integrated station development**



Client
Macquarie Group Ltd
50 Martin Place, Sydney
New South Wales 2000 Australia

Telephone +61 2 8232 3333
Email: www.macquarie.com

Drawing Title

**SYDNEY METRO - MARTIN PLACE
LEVEL 20 PLAN
GENERAL ARRANGEMENT**

Status Revision

STAGE II SSDA F

Drawing Number

CSWSMP-MAC-SMN-AT-DRG-DA-302000

Rev	App	Ckd	Revision or reason for issue	Date	Legend
A	PB	PVR	Stage 2 DA Draft	29-06-18	
B	PB	PVR	Stage 2 DA Draft	06-07-18	
C	PB	PVR	Stage 2 DA Draft	18-07-18	
D	PB	PVR	Stage 2 DA	03-08-18	
E	PB	PVR	Stage 2 DA	07-08-18	
F	PB	PVR	Stage 2 DA	22-08-18	

CSST Areas (not for approval)

CSST detail is indicative and subject to separate approval.

Final OSD detail on station levels is subject to issue of the relevant construction certificate and approved Station Design and Precinct Plan.

Scale / North Point

1:200 @ A1, 1:400 @ A3

General Notes

Do not scale from drawing. Use marked dimensions. To be read in conjunction with all other Consultant's drawings. The Architect to be immediately notified of any discrepancies. Copyright on this drawing retained by the Architect.

Notes

This architectural package describes the North Tower. Refer to Grimshaw for Metro and Trains for South Tower

Disclaimer

Street trees, furniture and other public domain elements within the precinct are indicative only and are subject to relevant approvals and detailed coordination with new and existing underground utilities and infrastructure.

Authoring Organisation

GRIMSHAW

Grimshaw
Level 2, 333 George Street, Sydney
New South Wales 2000 Australia

Telephone + +61 2 9253 0200
Email info@grimshaw-architects.com

Architect

**JPW
JOHNSON PILTON WALKER**

Johnson Pilton Walker Pty Ltd ACN 095 778 886
Level 10 Plaza Building Australia Square 95 Pitt Street Sydney
New South Wales 2000 Australia

Telephone +61 2 9259 5900
Email jpw@jpw.com.au

Project Title

**SYDNEY METRO MARTIN PLACE -
integrated station development**



Client
Macquarie Group Ltd
50 Martin Place, Sydney
New South Wales 2000 Australia

Telephone +61 2 8232 3333
Email: www.macquarie.com

Drawing Title

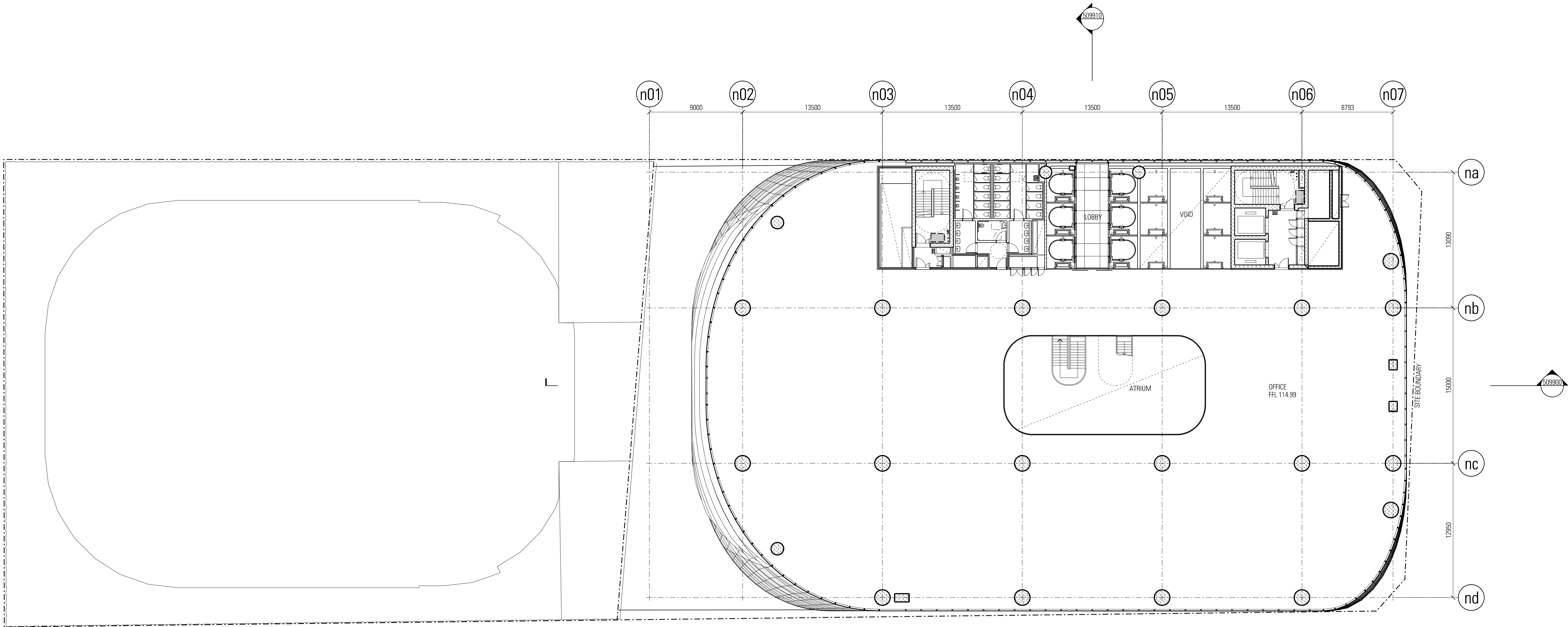
**SYDNEY METRO - MARTIN PLACE
LEVEL 21 PLAN
GENERAL ARRANGEMENT**

Status Revision

STAGE II SSDA **F**

Drawing Number

CSWSMP-MAC-SMN-AT-DRG-DA-302100



Rev	App	Ckd	Revision or reason for issue	Date	Legend
A	PB	PVR	Stage 2 DA Draft	29-06-18	
B	PB	PVR	Stage 2 DA Draft	06-07-18	
C	PB	PVR	Stage 2 DA Draft	18-07-18	
D	PB	PVR	Stage 2 DA	03-08-18	
E	PB	PVR	Stage 2 DA	07-08-18	
F	PB	PVR	Stage 2 DA	22-08-18	

CSST Areas (not for approval)

CSST detail is indicative and subject to separate approval.

Final OSD detail on station levels is subject to issue of the relevant construction certificate and approved Station Design and Precinct Plan.

Scale / North Point

1:200 @ A1, 1:400 @ A3

General Notes

Do not scale from drawing. Use marked dimensions. To be read in conjunction with all other Consultant's drawings. The Architect to be immediately notified of any discrepancies. Copyright on this drawing retained by the Architect.

Notes

This architectural package describes the North Tower. Refer to Grimshaw for Metro and Trains for South Tower

Disclaimer

Street trees, furniture and other public domain elements within the precinct are indicative only and are subject to relevant approvals and detailed coordination with new and existing underground utilities and infrastructure.

Authoring Organisation

GRIMSHAW

Grimshaw
Level 2, 333 George Street, Sydney
New South Wales 2000 Australia

Telephone ++ 61 2 9253 0200
Email info@grimshaw-architects.com

Architect

**JPW
JOHNSON PILTON WALKER**

Johnson Pilton Walker Pty Ltd ACN 095 778 886
Level 10 Plaza Building Australia Square 95 Pitt Street Sydney
New South Wales 2000 Australia

Telephone +61 2 9259 5900
Email jpw@jpw.com.au

Project Title

**SYDNEY METRO MARTIN PLACE -
integrated station development**



Client
Macquarie Group Ltd
50 Martin Place, Sydney
New South Wales 2000 Australia

Telephone +61 2 8232 3333
Email: www.macquarie.com

Drawing Title

**SYDNEY METRO - MARTIN PLACE
LEVEL 22 PLAN
GENERAL ARRANGEMENT**

Status Revision

STAGE II SSDA F

Drawing Number

CSWSMP-MAC-SMN-AT-DRG-DA-302200

Rev	App	Ckd	Revision or reason for issue	Date	Legend
A	PB	PVR	Stage 2 DA Draft	29-06-18	
B	PB	PVR	Stage 2 DA Draft	06-07-18	
C	PB	PVR	Stage 2 DA Draft	18-07-18	
D	PB	PVR	Stage 2 DA	03-08-18	
E	PB	PVR	Stage 2 DA	07-08-18	
F	PB	PVR	Stage 2 DA	22-08-18	

CSST Areas (not for approval)

CSST detail is indicative and subject to separate approval.

Final OSD detail on station levels is subject to issue of the relevant construction certificate and approved Station Design and Precinct Plan.

Scale / North Point

1:200 @ A1, 1:400 @ A3

General Notes

Do not scale from drawing. Use marked dimensions. To be read in conjunction with all other Consultant's drawings. The Architect to be immediately notified of any discrepancies. Copyright on this drawing retained by the Architect.

Notes

This architectural package describes the North Tower. Refer to Grimshaw for Metro and Trains for South Tower

Disclaimer

Street trees, furniture and other public domain elements within the precinct are indicative only and are subject to relevant approvals and detailed coordination with new and existing underground utilities and infrastructure.

Authoring Organisation

GRIMSHAW

Grimshaw
Level 2, 333 George Street, Sydney
New South Wales 2000 Australia

Telephone ++ 61 2 9253 0200
Email info@grimshaw-architects.com

Architect

**JPW
JOHNSON PILTON WALKER**

Johnson Pilton Walker Pty Ltd ACN 095 778 886
Level 10 Plaza Building Australia Square 95 Pitt Street Sydney
New South Wales 2000 Australia

Telephone +61 2 9259 5900
Email jpw@jpw.com.au

Project Title

**SYDNEY METRO MARTIN PLACE -
integrated station development**



Client
Macquarie Group Ltd
50 Martin Place, Sydney
New South Wales 2000 Australia

Telephone +61 2 8232 3333
Email: www.macquarie.com

Drawing Title

**SYDNEY METRO - MARTIN PLACE
LEVEL 23 PLAN
GENERAL ARRANGEMENT**

Status Revision

STAGE II SSDA F

Drawing Number

CSWSMP-MAC-SMN-AT-DRG-DA-302300

Rev	App	Ckd	Revision or reason for issue	Date	Legend
A	PB	PVR	Stage 2 DA Draft	29-06-18	
B	PB	PVR	Stage 2 DA Draft	06-07-18	
C	PB	PVR	Stage 2 DA Draft	18-07-18	
D	PB	PVR	Stage 2 DA	03-08-18	
E	PB	PVR	Stage 2 DA	07-08-18	
F	PB	PVR	Stage 2 DA	22-08-18	

CSST Areas (not for approval)

CSST detail is indicative and subject to separate approval.

Final OSD detail on station levels is subject to issue of the relevant construction certificate and approved Station Design and Precinct Plan.

Scale / North Point

1:200 @ A1, 1:400 @ A3

General Notes

Do not scale from drawing. Use marked dimensions. To be read in conjunction with all other Consultant's drawings. The Architect to be immediately notified of any discrepancies. Copyright on this drawing retained by the Architect.

Notes

This architectural package describes the North Tower. Refer to Grimshaw for Metro and Trains for South Tower

Disclaimer

Street trees, furniture and other public domain elements within the precinct are indicative only and are subject to relevant approvals and detailed coordination with new and existing underground utilities and infrastructure.

Authoring Organisation

GRIMSHAW

Grimshaw
Level 2, 333 George Street, Sydney
New South Wales 2000 Australia

Telephone ++ +61 2 9253 0200
Email info@grimshaw-architects.com

Architect

**JPW
JOHNSON PILTON WALKER**

Johnson Pilton Walker Pty Ltd ACN 095 778 886
Level 10 Plaza Building Australia Square 95 Pitt Street Sydney
New South Wales 2000 Australia

Telephone +61 2 9259 5900
Email jpw@jpw.com.au

Project Title

**SYDNEY METRO MARTIN PLACE -
integrated station development**



Client
Macquarie Group Ltd
50 Martin Place, Sydney
New South Wales 2000 Australia

Telephone +61 2 8232 3333
Email: www.macquarie.com

Drawing Title

**SYDNEY METRO - MARTIN PLACE
LEVEL 24 PLAN
GENERAL ARRANGEMENT**

Status

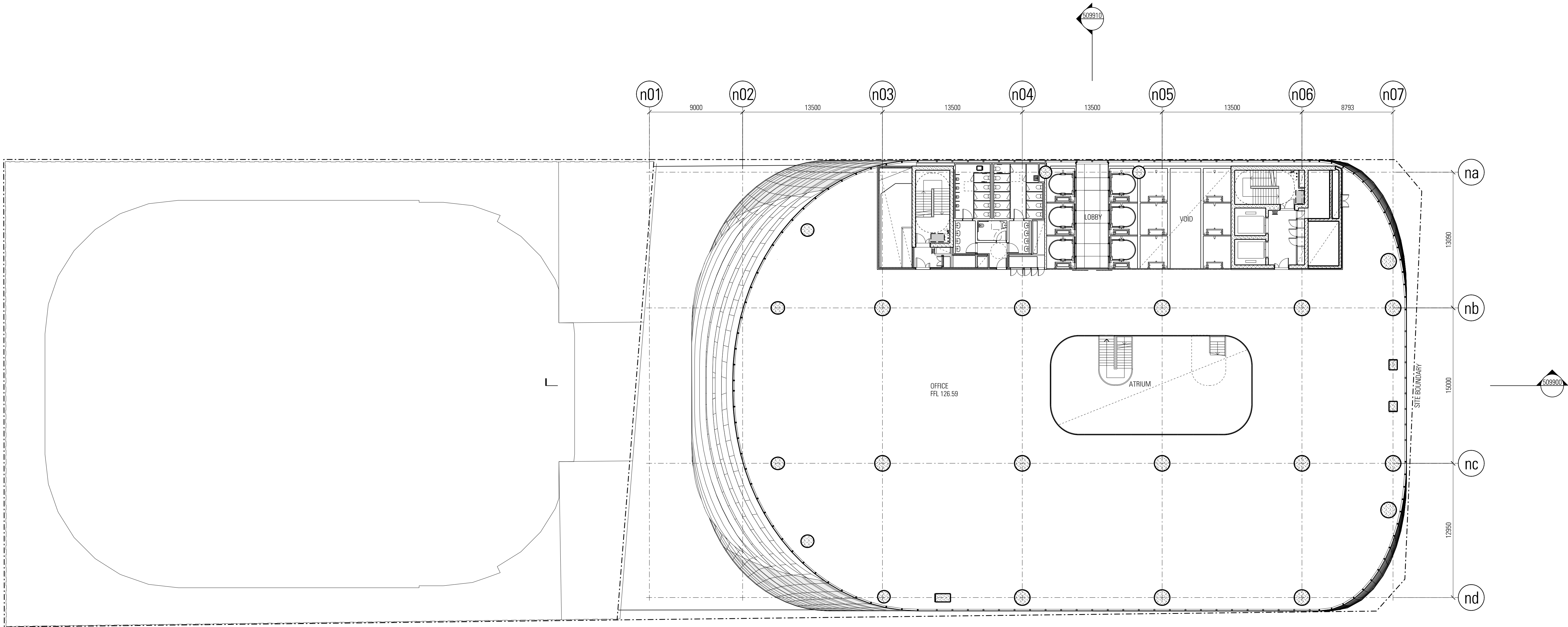
STAGE II SSDA

Drawing Number

CSWSMP-MAC-SMN-AT-DRG-DA-302400

Revision

F



Rev	App	Ckd	Revision or reason for issue	Date	Legend
A	PB	PVR	Stage 2 DA Draft	29-06-18	
B	PB	PVR	Stage 2 DA Draft	06-07-18	
C	PB	PVR	Stage 2 DA Draft	18-07-18	
D	PB	PVR	Stage 2 DA	03-08-18	
E	PB	PVR	Stage 2 DA	07-08-18	
F	PB	PVR	Stage 2 DA	22-08-18	

CSST Areas (not for approval)

CSST detail is indicative and subject to separate approval.

Final OSD detail on station levels is subject to issue of the relevant construction certificate and approved Station Design and Precinct Plan.

Scale / North Point

1:200 @ A1, 1:400 @ A3

General Notes

Do not scale from drawing. Use marked dimensions. To be read in conjunction with all other Consultant's drawings. The Architect to be immediately notified of any discrepancies. Copyright on this drawing retained by the Architect.

Notes

This architectural package describes the North Tower. Refer to Grimshaw for Metro and Trains for South Tower

Disclaimer

Street trees, furniture and other public domain elements within the precinct are indicative only and are subject to relevant approvals and detailed coordination with new and existing underground utilities and infrastructure.

Authoring Organisation

GRIMSHAW

Grimshaw
Level 2, 333 George Street, Sydney
New South Wales 2000 Australia

Telephone ++ 61 2 9253 0200
Email info@grimshaw-architects.com

Architect

**JPW
JOHNSON PILTON WALKER**

Johnson Pilton Walker Pty Ltd ACN 095 778 886
Level 10 Plaza Building Australia Square 95 Pitt Street Sydney
New South Wales 2000 Australia

Telephone +61 2 9259 5900
Email jpw@jpw.com.au

Project Title

**SYDNEY METRO MARTIN PLACE -
integrated station development**



Client
Macquarie Group Ltd
50 Martin Place, Sydney
New South Wales 2000 Australia

Telephone +61 2 8232 3333
Email: www.macquarie.com

Drawing Title

**SYDNEY METRO - MARTIN PLACE
LEVEL 25 PLAN
GENERAL ARRANGEMENT**

Status Revision

STAGE II SSDA F

Drawing Number

CSWSMP-MAC-SMN-AT-DRG-DA-302500

Rev	App	Ckd	Revision or reason for issue
A	PB	PVR	Stage 2 DA Draft
B	PB	PVR	Stage 2 DA Draft
C	PB	PVR	Stage 2 DA Draft
D	PB	PVR	Stage 2 DA
E	PB	PVR	Stage 2 DA
F	PB	PVR	Stage 2 DA

Date	Legend
29-06-18	
06-07-18	
16-07-18	
03-08-18	
07-08-18	
22-08-18	

CSST Areas (not for approval)

CSST detail is indicative and subject to separate approval.

Final OSD detail on station levels is subject to issue of the relevant construction certificate and approved Station Design and Precinct Plan.

Scale / North Point

1:200 @ A1, 1:400 @ A3

General Notes

Do not scale from drawing. Use marked dimensions. To be read in conjunction with all other Consultant's drawings. The Architect to be immediately notified of any discrepancies. Copyright on this drawing retained by the Architect.

Notes

This architectural package describes the North Tower. Refer to Grimshaw for Metro and Trains for South Tower

Disclaimer

Street trees, furniture and other public domain elements within the precinct are indicative only and are subject to relevant approvals and detailed coordination with new and existing underground utilities and infrastructure.

Authoring Organisation

GRIMSHAW

Grimshaw
Level 2, 333 George Street, Sydney
New South Wales 2000 Australia

Telephone ++ 61 2 9253 0200
Email info@grimshaw-architects.com

Architect

**JPW
JOHNSON PILTON WALKER**

Johnson Pilton Walker Pty Ltd ACN 095 778 886
Level 10 Plaza Building Australia Square 95 Pitt Street Sydney
New South Wales 2000 Australia

Telephone +61 2 9259 5900
Email jpw@jpw.com.au

Project Title

**SYDNEY METRO MARTIN PLACE -
Integrated station development**



Client
Macquarie Group Ltd
50 Martin Place, Sydney
New South Wales 2000 Australia

Telephone +61 2 8232 3333
Email: www.macquarie.com

Drawing Title

**SYDNEY METRO - MARTIN PLACE
LEVEL 26 PLAN
GENERAL ARRANGEMENT**

Status

STAGE II SSDA

Drawing Number

CSWSMP-MAC-SMN-AT-DRG-DA-302600

Revision

F

Rev	App	Ckd	Revision or reason for issue	Date	Legend
A	PB	PVR	Stage 2 DA Draft	29-06-18	
B	PB	PVR	Stage 2 DA Draft	06-07-18	
C	PB	PVR	Stage 2 DA Draft	18-07-18	
D	PB	PVR	Stage 2 DA	03-08-18	
E	PB	PVR	Stage 2 DA	07-08-18	
F	PB	PVR	Stage 2 DA	22-08-18	

CSST Areas (not for approval)

CSST detail is indicative and subject to separate approval.

Final OSD detail on station levels is subject to issue of the relevant construction certificate and approved Station Design and Precinct Plan.

Scale / North Point

1:200 @ A1, 1:400 @ A3

General Notes

Do not scale from drawing. Use marked dimensions. To be read in conjunction with all other Consultant's drawings. The Architect to be immediately notified of any discrepancies. Copyright on this drawing retained by the Architect.

Notes

This architectural package describes the North Tower. Refer to Grimshaw for Metro and Trains for South Tower

Disclaimer

Street trees, furniture and other public domain elements within the precinct are indicative only and are subject to relevant approvals and detailed coordination with new and existing underground utilities and infrastructure.

Authoring Organisation

GRIMSHAW

Grimshaw
Level 2, 333 George Street, Sydney
New South Wales 2000 Australia

Telephone ++ +61 2 9253 0200
Email info@grimshaw-architects.com

Architect

**JPW
JOHNSON PILTON WALKER**

Johnson Pilton Walker Pty Ltd ACN 095 778 886
Level 10 Plaza Building Australia Square 95 Pitt Street Sydney
New South Wales 2000 Australia

Telephone +61 2 9259 5900
Email jpw@jpw.com.au

Project Title

**SYDNEY METRO MARTIN PLACE -
integrated station development**



Client
Macquarie Group Ltd
50 Martin Place, Sydney
New South Wales 2000 Australia

Telephone +61 2 8232 3333
Email: www.macquarie.com

Drawing Title

**SYDNEY METRO - MARTIN PLACE
LEVEL 27 PLAN
GENERAL ARRANGEMENT**

Status Revision

STAGE II SSDA F

Drawing Number

CSWSMP-MAC-SMN-AT-DRG-DA-302700

Rev	App	Ckd	Revision or reason for issue
A	PB	PVR	Stage 2 DA Draft
B	PB	PVR	Stage 2 DA Draft
C	PB	PVR	Stage 2 DA Draft
D	PB	PVR	Stage 2 DA
E	PB	PVR	Stage 2 DA
F	PB	PVR	Stage 2 DA

Date	Legend
29-06-18	
06-07-18	
16-07-18	
03-08-18	
07-08-18	
22-08-18	

CSST Areas (not for approval)

CSST detail is indicative and subject to separate approval.

Final OSD detail on station levels is subject to issue of the relevant construction certificate and approved Station Design and Precinct Plan.

Scale / North Point

1:200 @ A1, 1:400 @ A3

General Notes

Do not scale from drawing. Use marked dimensions. To be read in conjunction with all other Consultant's drawings. The Architect to be immediately notified of any discrepancies. Copyright on this drawing retained by the Architect.

Notes

This architectural package describes the North Tower. Refer to Grimshaw for Metro and Tzannes for South Tower

Disclaimer

Street trees, furniture and other public domain elements within the precinct are indicative only and are subject to relevant approvals and detailed coordination with new and existing underground utilities and infrastructure.

Authoring Organisation

GRIMSHAW

Grimshaw
Level 2, 333 George Street, Sydney
New South Wales 2000 Australia

Telephone ++ +61 2 9253 0200
Email info@grimshaw-architects.com

Architect

**JPW
JOHNSON PILTON WALKER**

Johnson Pilton Walker Pty Ltd ACN 095 778 886
Level 10 Plaza Building Australia Square 95 Pitt Street Sydney
New South Wales 2000 Australia

Telephone +61 2 9259 5900
Email jpw@jpw.com.au

Project Title

**SYDNEY METRO MARTIN PLACE -
integrated station development**



Client
Macquarie Group Ltd
50 Martin Place, Sydney
New South Wales 2000 Australia

Telephone +61 2 8232 3333
Email: www.macquarie.com

Drawing Title

**SYDNEY METRO - MARTIN PLACE
LEVEL 28 PLAN
GENERAL ARRANGEMENT**

Status Revision

STAGE II SSDA F

Drawing Number

CSWSMP-MAC-SMN-AT-DRG-DA-302800

Rev	App	Ckd	Revision or reason for issue	Date	Legend
A	PB	PVR	Stage 2 DA Draft	29-06-18	
B	PB	PVR	Stage 2 DA Draft	06-07-18	
C	PB	PVR	Stage 2 DA Draft	18-07-18	
D	PB	PVR	Stage 2 DA	03-08-18	
E	PB	PVR	Stage 2 DA	07-08-18	
F	PB	PVR	Stage 2 DA	22-08-18	

CSST Areas (not for approval)

CSST detail is indicative and subject to separate approval.

Final OSD detail on station levels is subject to issue of the relevant construction certificate and approved Station Design and Precinct Plan.

Scale / North Point

1:200 @ A1, 1:400 @ A3

General Notes

Do not scale from drawing. Use marked dimensions. To be read in conjunction with all other Consultant's drawings. The Architect to be immediately notified of any discrepancies. Copyright on this drawing retained by the Architect.

Notes

This architectural package describes the North Tower. Refer to Grimshaw for Metro and Trains for South Tower

Disclaimer

Street trees, furniture and other public domain elements within the precinct are indicative only and are subject to relevant approvals and detailed coordination with new and existing underground utilities and infrastructure.

Authoring Organisation

GRIMSHAW

Grimshaw
Level 2, 333 George Street, Sydney
New South Wales 2000 Australia

Telephone ++ +61 2 9253 0200
Email info@grimshaw-architects.com

Architect

**JPW
JOHNSON PILTON WALKER**

Johnson Pilton Walker Pty Ltd ACN 095 778 886
Level 10 Plaza Building Australia Square 95 Pitt Street Sydney
New South Wales 2000 Australia

Telephone +61 2 9259 5900
Email jpw@jpw.com.au

Project Title

**SYDNEY METRO MARTIN PLACE -
integrated station development**



Client
Macquarie Group Ltd
50 Martin Place, Sydney
New South Wales 2000 Australia

Telephone +61 2 8232 3333
Email: www.macquarie.com

Drawing Title

**SYDNEY METRO - MARTIN PLACE
LEVEL 29 PLAN
GENERAL ARRANGEMENT**

Status

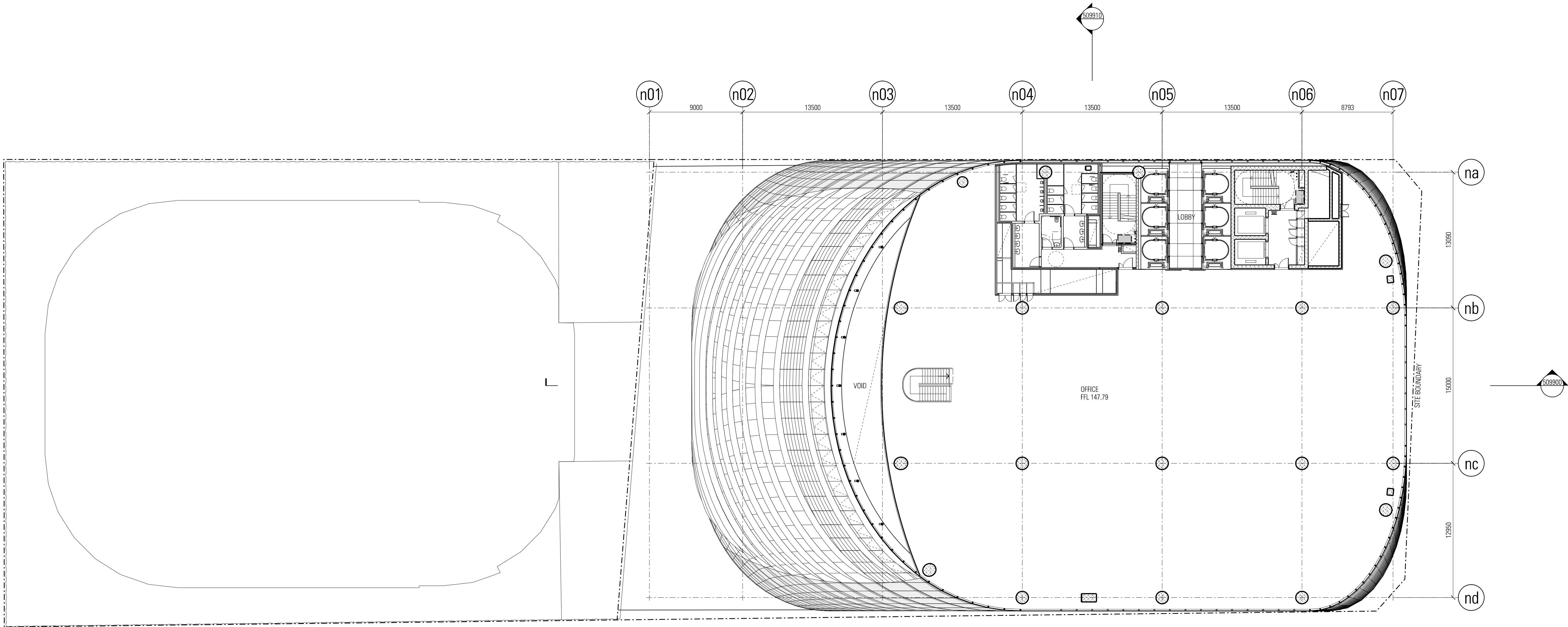
STAGE II SSDA

Drawing Number

CSWSMP-MAC-SMN-AT-DRG-DA-302900

Revision

F



Rev	App	Ckd	Revision or reason for issue	Date	Legend
A	PB	PVR	Stage 2 DA Draft	29-06-18	
B	PB	PVR	Stage 2 DA Draft	06-07-18	
C	PB	PVR	Stage 2 DA Draft	18-07-18	
D	PB	PVR	Stage 2 DA	03-08-18	
E	PB	PVR	Stage 2 DA	07-08-18	
F	PB	PVR	Stage 2 DA	22-08-18	

CSST Areas (not for approval)

CSST detail is indicative and subject to separate approval.

Final OSD detail on station levels is subject to issue of the relevant construction certificate and approved Station Design and Precinct Plan.

Scale / North Point

1:200 @ A1, 1:400 @ A3

General Notes

Do not scale from drawing. Use marked dimensions. To be read in conjunction with all other Consultant's drawings. The Architect to be immediately notified of any discrepancies. Copyright on this drawing retained by the Architect.

Notes

This architectural package describes the North Tower. Refer to Grimshaw for Metro and Trammes for South Tower

Disclaimer

Street trees, furniture and other public domain elements within the precinct are indicative only and are subject to relevant approvals and detailed coordination with new and existing underground utilities and infrastructure.

Authoring Organisation

GRIMSHAW

Grimshaw
Level 2, 333 George Street, Sydney
New South Wales 2000 Australia

Telephone ++ 61 2 9253 0200
Email info@grimshaw-architects.com

Architect

**JPW
JOHNSON PILTON WALKER**

Johnson Pilton Walker Pty Ltd ACN 095 778 886
Level 10 Plaza Building Australia Square 95 Pitt Street Sydney
New South Wales 2000 Australia

Telephone +61 2 9259 5900
Email jpw@jpw.com.au

Project Title

**SYDNEY METRO MARTIN PLACE -
Integrated station development**



Client
Macquarie Group Ltd
50 Martin Place, Sydney
New South Wales 2000 Australia

Telephone +61 2 8232 3333
Email: www.macquarie.com

Drawing Title

**SYDNEY METRO - MARTIN PLACE
LEVEL 30 PLAN
GENERAL ARRANGEMENT**

Status Revision

STAGE II SSDA F

Drawing Number

CSWSMP-MAC-SMN-AT-DRG-DA-303000

Rev	App	Ckd	Revision or reason for issue	Date	Legend
A	PB	PVR	Stage 2 DA Draft	29-06-18	
B	PB	PVR	Stage 2 DA Draft	06-07-18	
C	PB	PVR	Stage 2 DA Draft	18-07-18	
D	PB	PVR	Stage 2 DA	03-08-18	
E	PB	PVR	Stage 2 DA	07-08-18	
F	PB	PVR	Stage 2 DA	22-08-18	

CSST Areas (not for approval)

CSST detail is indicative and subject to separate approval.

Final OSD detail on station levels is subject to issue of the relevant construction certificate and approved Station Design and Precinct Plan.

Scale / North Point

1:200 @ A1, 1:400 @ A3

General Notes

Do not scale from drawing. Use marked dimensions. To be read in conjunction with all other Consultant's drawings. The Architect to be immediately notified of any discrepancies. Copyright on this drawing retained by the Architect.

Notes

This architectural package describes the North Tower. Refer to Grimshaw for Metro and Trains for South Tower

Disclaimer

Street trees, furniture and other public domain elements within the precinct are indicative only and are subject to relevant approvals and detailed coordination with new and existing underground utilities and infrastructure.

Authoring Organisation

GRIMSHAW

Grimshaw
Level 2, 333 George Street, Sydney
New South Wales 2000 Australia

Telephone ++ 61 2 9253 0200
Email info@grimshaw-architects.com

Architect

**JPW
JOHNSON PILTON WALKER**

Johnson Pilton Walker Pty Ltd ACN 095 778 886
Level 10 Plaza Building Australia Square 95 Pitt Street Sydney
New South Wales 2000 Australia

Telephone +61 2 9259 5900
Email jpw@jpw.com.au

Project Title

**SYDNEY METRO MARTIN PLACE -
Integrated station development**



Client
Macquarie Group Ltd
50 Martin Place, Sydney
New South Wales 2000 Australia

Telephone +61 2 8232 3333
Email: www.macquarie.com

Drawing Title

**SYDNEY METRO - MARTIN PLACE
LEVEL 31 PLAN
GENERAL ARRANGEMENT**

Status

STAGE II SSDA

Drawing Number

CSWSMP-MAC-SMN-AT-DRG-DA-303100

Revision

F

Rev	App	Ckd	Revision or reason for issue	Date	Legend
A	PB	PVR	Stage 2 DA Draft	29-06-18	
B	PB	PVR	Stage 2 DA Draft	06-07-18	
C	PB	PVR	Stage 2 DA Draft	18-07-18	
D	PB	PVR	Stage 2 DA	03-08-18	
E	PB	PVR	Stage 2 DA	07-08-18	
F	PB	PVR	Stage 2 DA	22-08-18	

CSST Areas (not for approval)

CSST detail is indicative and subject to separate approval.

Final OSD detail on station levels is subject to issue of the relevant construction certificate and approved Station Design and Precinct Plan.

Scale / North Point

1:200 @ A1, 1:400 @ A3

General Notes

Do not scale from drawing. Use marked dimensions. To be read in conjunction with all other Consultant's drawings. The Architect to be immediately notified of any discrepancies. Copyright on this drawing retained by the Architect.

Notes

This architectural package describes the North Tower. Refer to Grimshaw for Metro and Trains for South Tower

Disclaimer

Street trees, furniture and other public domain elements within the precinct are indicative only and are subject to relevant approvals and detailed coordination with new and existing underground utilities and infrastructure.

Authoring Organisation

GRIMSHAW

Grimshaw
Level 2, 333 George Street, Sydney
New South Wales 2000 Australia

Telephone ++ +61 2 9253 0200
Email info@grimshaw-architects.com

Architect

**JPW
JOHNSON PILTON WALKER**

Johnson Pilton Walker Pty Ltd ACN 095 778 886
Level 10 Plaza Building Australia Square 95 Pitt Street Sydney
New South Wales 2000 Australia

Telephone +61 2 9259 5900
Email jpw@jpw.com.au

Project Title

**SYDNEY METRO MARTIN PLACE -
Integrated station development**



Client
Macquarie Group Ltd
50 Martin Place, Sydney
New South Wales 2000 Australia

Telephone +61 2 8232 3333
Email: www.macquarie.com

Drawing Title

**SYDNEY METRO - MARTIN PLACE
LEVEL 32 PLAN
GENERAL ARRANGEMENT**

Status

STAGE II SSDA

Drawing Number

CSWSMP-MAC-SMN-AT-DRG-DA-303200

Revision

F

Rev	App	Ckd	Revision or reason for issue	Date	Legend
A	PB	PVR	Stage 2 DA Draft	29-06-18	
B	PB	PVR	Stage 2 DA Draft	06-07-18	
C	PB	PVR	Stage 2 DA Draft	18-07-18	
D	PB	PVR	Stage 2 DA	03-08-18	
E	PB	PVR	Stage 2 DA	07-08-18	
F	PB	PVR	Stage 2 DA	22-08-18	

CSST Areas (not for approval)

CSST detail is indicative and subject to separate approval.

Final OSD detail on station levels is subject to issue of the relevant construction certificate and approved Station Design and Precinct Plan.

Scale / North Point

1:200 @ A1, 1:400 @ A3

General Notes

Do not scale from drawing. Use marked dimensions. To be read in conjunction with all other Consultant's drawings. The Architect to be immediately notified of any discrepancies. Copyright on this drawing retained by the Architect.

Notes

This architectural package describes the North Tower. Refer to Grimshaw for Metro and Trammes for South Tower

Disclaimer

Street trees, furniture and other public domain elements within the precinct are indicative only and are subject to relevant approvals and detailed coordination with new and existing underground utilities and infrastructure.

Authoring Organisation

GRIMSHAW

Grimshaw
Level 2, 333 George Street, Sydney
New South Wales 2000 Australia

Telephone ++ 61 2 9253 0200
Email info@grimshaw-architects.com

Architect

**JPW
JOHNSON PILTON WALKER**

Johnson Pilton Walker Pty Ltd ACN 095 778 886
Level 10 Plaza Building Australia Square 95 Pitt Street Sydney
New South Wales 2000 Australia

Telephone +61 2 9259 5900
Email jpw@jpw.com.au

Project Title

**SYDNEY METRO MARTIN PLACE -
integrated station development**



Client
Macquarie Group Ltd
50 Martin Place, Sydney
New South Wales 2000 Australia

Telephone +61 2 8232 3333
Email: www.macquarie.com

Drawing Title

**SYDNEY METRO - MARTIN PLACE
LEVEL 33 PLAN
GENERAL ARRANGEMENT**

Status

STAGE II SSDA

Drawing Number

CSWSMP-MAC-SMN-AT-DRG-DA-303300

Revision

F

Rev	App	Ckd	Revision or reason for issue	Date	Legend
A	PB	PVR	Stage 2 DA Draft	29-06-18	
B	PB	PVR	Stage 2 DA Draft	06-07-18	
C	PB	PVR	Stage 2 DA Draft	18-07-18	
D	PB	PVR	Stage 2 DA	03-08-18	
E	PB	PVR	Stage 2 DA	07-08-18	
F	PB	PVR	Stage 2 DA	22-08-18	

CSST Areas (not for approval)

CSST detail is indicative and subject to separate approval.

Final OSD detail on station levels is subject to issue of the relevant construction certificate and approved Station Design and Precinct Plan.

Scale / North Point

1:200 @ A1, 1:400 @ A3

General Notes

Do not scale from drawing. Use marked dimensions. To be read in conjunction with all other Consultant's drawings. The Architect to be immediately notified of any discrepancies. Copyright on this drawing retained by the Architect.

Notes

This architectural package describes the North Tower. Refer to Grimshaw for Metro and Trains for South Tower

Disclaimer

Street trees, furniture and other public domain elements within the precinct are indicative only and are subject to relevant approvals and detailed coordination with new and existing underground utilities and infrastructure.

Authoring Organisation

GRIMSHAW

Grimshaw
Level 2, 333 George Street, Sydney
New South Wales 2000 Australia

Telephone ++ +61 2 9253 0200
Email info@grimshaw-architects.com

Architect

**JPW
JOHNSON PILTON WALKER**

Johnson Pilton Walker Pty Ltd ACN 095 778 886
Level 10 Plaza Building Australia Square 95 Pitt Street Sydney
New South Wales 2000 Australia

Telephone ++ +61 2 9259 5900
Email jpw@jpw.com.au

Project Title

**SYDNEY METRO - MARTIN PLACE -
Integrated station development**



Client
Macquarie Group Ltd
50 Martin Place, Sydney
New South Wales 2000 Australia

Telephone ++ +61 2 8232 3333
Email: www.macquarie.com

Drawing Title

**SYDNEY METRO - MARTIN PLACE
LEVEL 34 PLAN
GENERAL ARRANGEMENT**

Status Revision

STAGE II SSDA F

Drawing Number

CSWSMP-MAC-SMN-AT-DRG-DA-303400