

Ms Melanie Prior
DA Coordinator
Resource Assessments, Business Systems and Compliance
Department of Planning & Environment
GPO Box 39 SYDNEY NSW 2001

Melanie.Prior@planning.nsw.gov.au

Dear Melanie

Goonumbla Solar Farm Project (SSD 7618) - Notice of Exhibition

I refer to your email dated 28 September 2016 inviting the Division of Resources & Energy (the Division) to provide comments on the Goonumbla Solar Farm Project (SSD 7618) - Notice of Exhibition.

Goonumbla Solar Farm Pty Ltd ('the Applicant') has submitted an Environmental Impact Statement (EIS) for a proposed solar farm located 10km west of Parkes, in Parkes Local Government Area.

The Goonumbla Solar Farm Project includes:

- construction and operation of a 70 MW solar photovoltaic (PV) plant and,
- development of associated infrastructure and a grid connection.

The Division provides the following comments:

The Parkes area is prospective for metallic minerals (gold and copper), industrial minerals (limestone) and construction materials (aggregate). A significant amount of land in the Parkes area is currently held under Exploration Licences (ELs) with active exploration activities occurring for Group 1 minerals.

The Division's requirements (our ref: INT16/54219) were not included in the SEARs and have therefore not been addressed by the Applicant in the EIS.

The Applicant correctly noted on page 39 of the EIS that EL 7676, held by Gold Fields Australasia Pty Ltd, covers the project site, however no record of an attempt to consult with the title holder was recorded.

The Division considers that the Applicant should make a reasonable attempt to consult with Goldfields Australasia Pty Ltd regarding the potential impacts the proposed development may have on exploration activities in the area, and document the outcomes of this liaison in the EIS.

The NSW Government is committed to providing a diverse, affordable and clean energy mix for NSW. Solar energy is a key part of that mix and is supported under the Government's Renewable

Energy Action Plan and the recently announced Advanced Energy Strategy and Climate Change Policy Framework.

Solar farms drive investment and growth in regional NSW and provide alternate income streams to traditional farming communities. Increasing solar energy in NSW will help the Government meet its commitment to support the national Renewable Energy Target of 33,000 gigawatt hours (GWh) by 2020.

NSW has an abundance of excellent solar resources and established electricity infrastructure that makes it attractive to solar farm developers. The Goonumbla Solar Farm is a good example of this as it is located adjacent to TransGrid's Parkes Substation in Central NSW.

The Division of Resources & Energy supports the proposed Goonumbla Solar Farm as it aligns with Government policy to increase renewable energy generation, jobs and investment in the State. The 70 megawatt (MW) solar farm has an estimated capital investment value of approximately \$130 million and would support up to 100 jobs during the 12 month construction period.

The solar farm may also include a battery storage system, which would allow solar energy to be stored and dispatched to the grid when it is needed. Battery storage technology has the potential to play an important role in complimenting other renewable energy technologies such as solar PV and wind to help transition NSW to a cleaner energy mix while maintaining reliability and security of supply.

The Division's Industry Investment & Export Support branch and Renewable Energy Advocate have been working with Renewable Energy Developments since May 2016 to facilitate development of the solar farm and will continue to work with the company as the project progresses through to construction and commissioning stages.

Should you have any enquires regarding this matter please contact Steve Cozens, Senior Project Officer, Royalty & Advisory Services on 9842 8573.

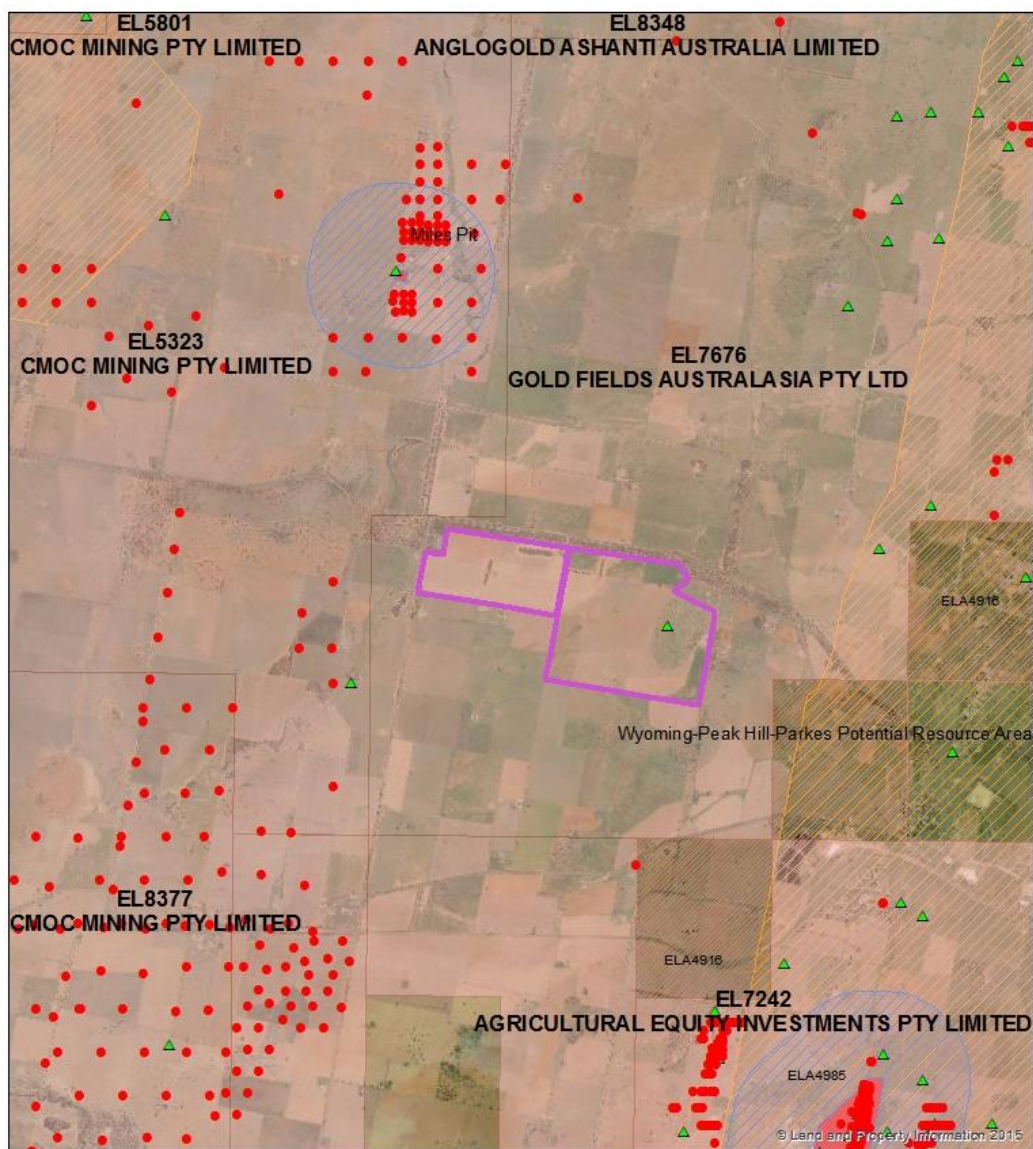
Yours sincerely

A handwritten signature in black ink, appearing to read 'Zane West', is written over a horizontal line.

Zane West

**Manager Royalties & Advisory Services
Operations & Programs**

11 November 2016



Path: G:\Geosurvey\MINLU\MINLU_Landuse\LU_ARCGIS\USERS\CBerry\Geoscience_Spatial_View_20160822_Geos_V1.mxd
Date Saved: 7/10/2016 4:33:49 PM



Legend

- | | |
|-----------------------------------|---------------------|
| Goonumbra Solar Farm project site | Identified Resource |
| Current Mineral Titles | Potential Resource |
| Current Mineral Applications | Transition Area |
| Met & Ind Min bores from GBIS | |
| Mineral Occurrence | |

0 0.5 1 2 3
Kilometers

