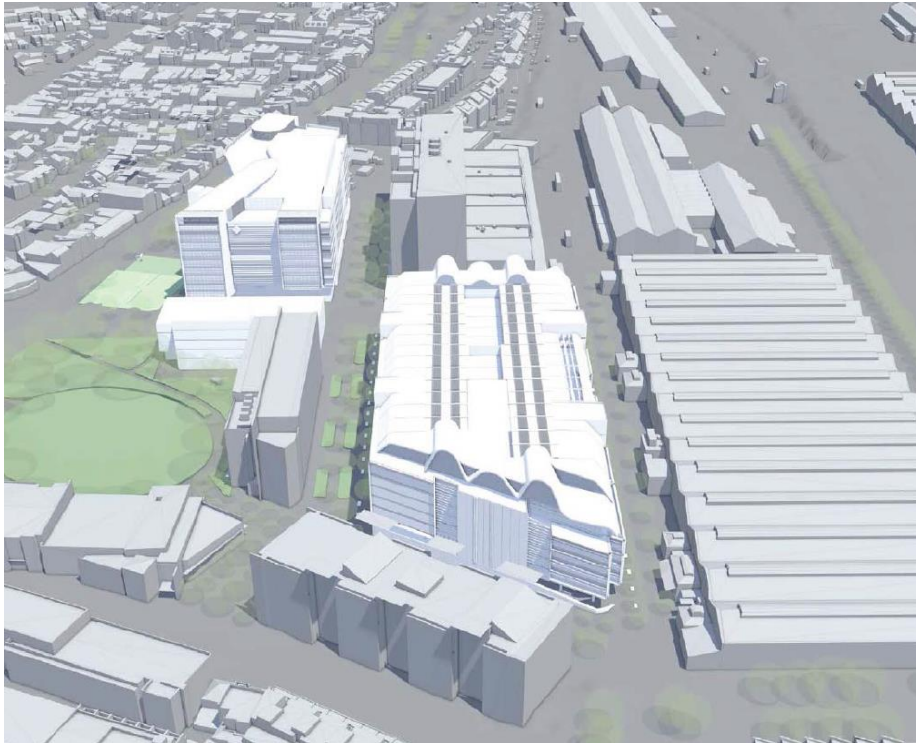


Attachments to Objection [REDACTED] – ATP Mirvac development

Application Number

SSD 15_7317

1 overscale development related to surrounding area



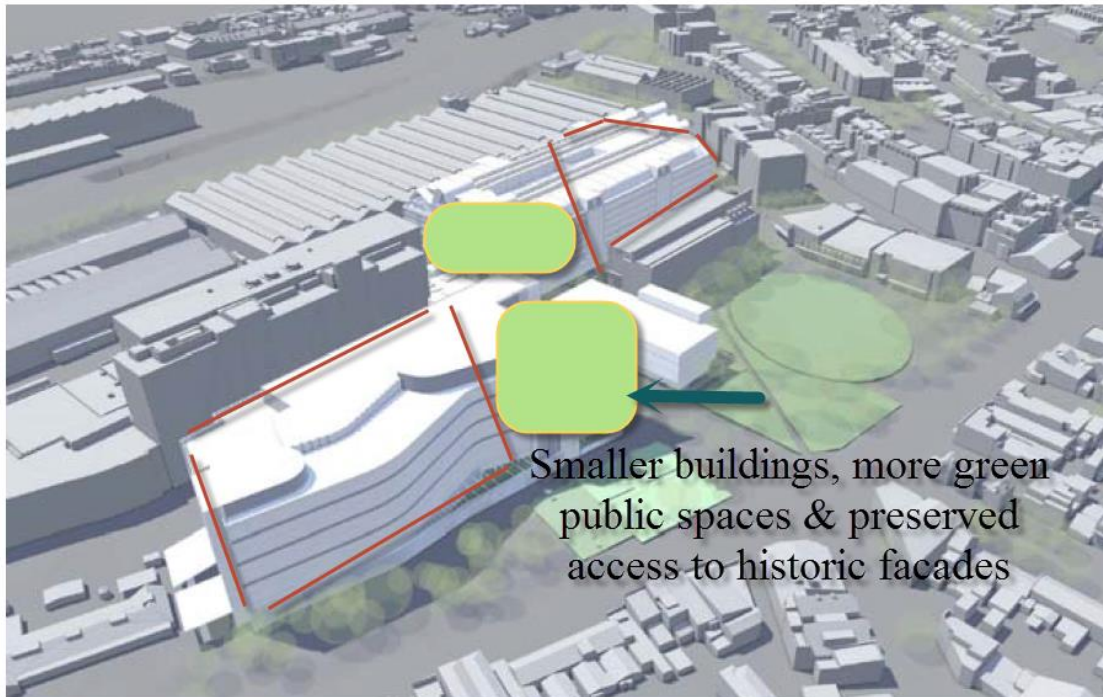


Figure 9 – Building 1 (foreground in white) and Building 2 (background in white)
 Source: FJMT + SISSONS Architects

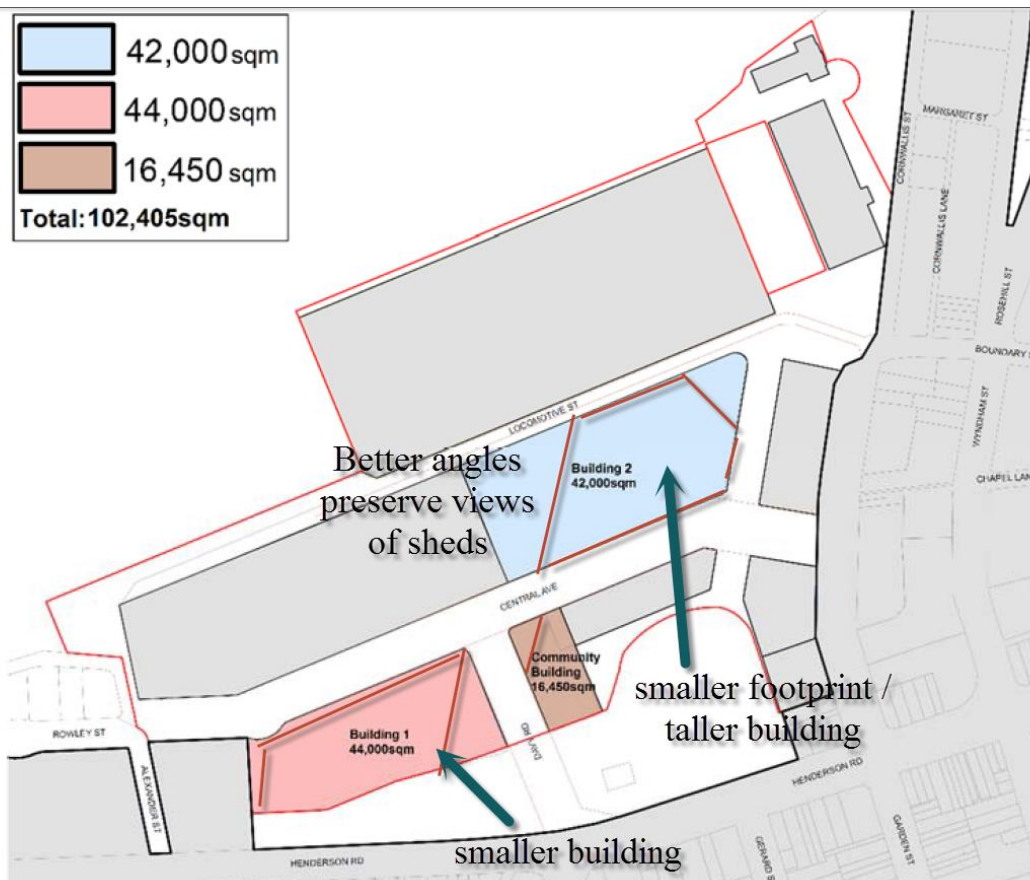


Figure 1 – Extract from MD SEPP maximum GFA map
 Source: NSW Legislation website and JBA



Figure 2 – Illustration of height distribution across ATP (with proposed variation circled in red)
Source: *fjmt*

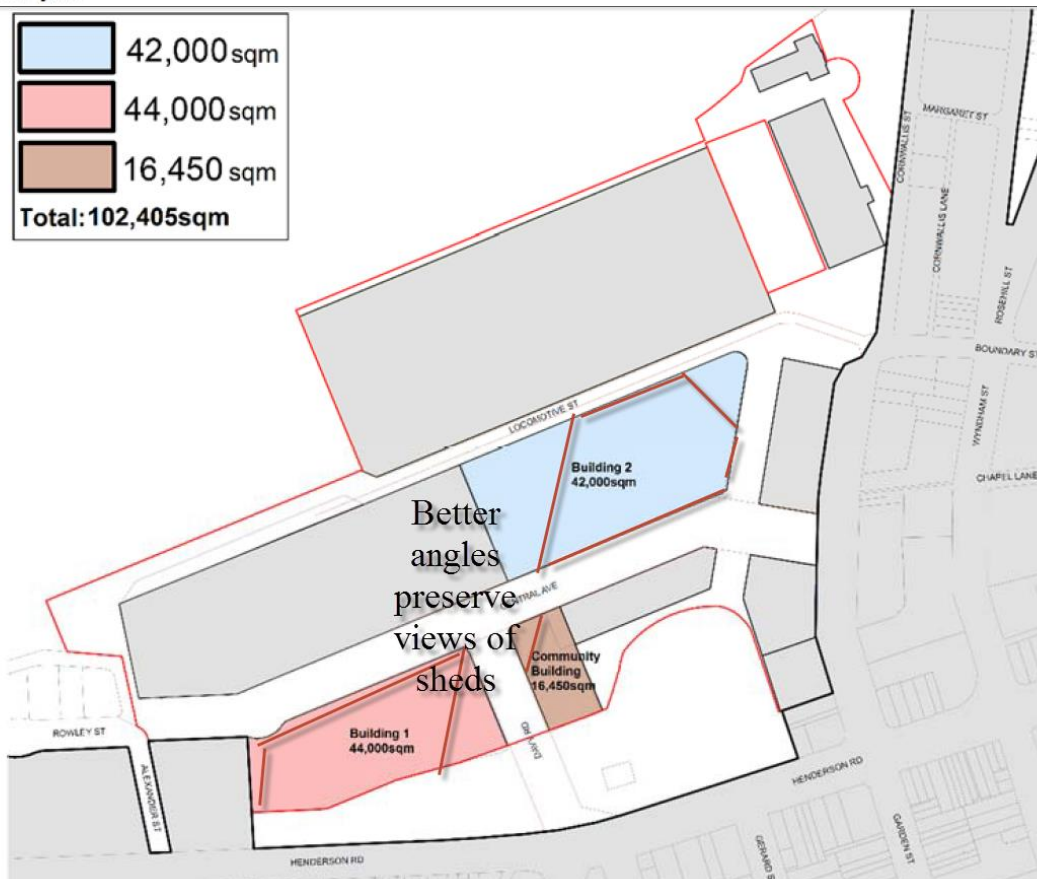


Figure 1 – Extract from MD SEPP maximum GFA map
Source: *NSW Legislation website and JBA*

