

Peter McManus

To: Cornelis Duba
Subject: RE: NSW Planning & Environment State Significant Development SSD 7237
Redevelopment of Arthur Philip High School and Parramatta Public School

From: Cornelis Duba [mailto:Cornelis.Duba@endeavourenergy.com.au]
Sent: Friday, 17 June 2016 10:58 AM
To: DPE CSE Information Planning Mailbox <information@planning.nsw.gov.au>
Cc: Peter McManus <Peter.McManus@planning.nsw.gov.au>
Subject: NSW Planning & Environment State Significant Development SSD 7237 Redevelopment of Arthur Philip High School and Parramatta Public School

The Secretary
NSW Planning & Environment

ATTENTION: Attention: Director - Social and Other Infrastructure Assessments

Dear Sir or Madam

I refer to the letter of 13 May 2016 regarding State Significant Development Application SSD 7237 at 175 and 80-100 Macquarie Street, Parramatta (Lots 62, 63, 63A, 64, 65 DP758829, Lot 413 DP820541, Lot 27A DP449406, Lots 23, 24, 25, 26 DP7809, Lot 414 DP820542, Lots 1, 2, 3 DP115296) for 'Redevelopment of Arthur Philip High School and Parramatta Public School'. Submissions need to be made by 17 June 2016..

As shown in the below site plans from Endeavour Energy's G/Net master facility model there is significant electricity infrastructure over and in the vicinity of the site which is also opposite Endeavour Energy's Parramatta Zone Substation at 1A Barrack Lane, Parramatta (Lot 12 DP 856102). Please note the location of any electricity infrastructure, boundaries etc. shown on the plan is indicative only and this plan is not a 'Dial Before You Dig' plan under the provisions of Part 5E 'Protection of underground electricity power lines' of the Electricity Supply Act 1995 (NSW).

As a nearby landowner/occupier Endeavour Energy has no objections to the proposed development of the precincts. From a electricity transmission or distribution networks perspective its recommendations and comments are as follows:

- Network Capacity / Connection

In due course the applicant for the future proposed redevelopment of the site will need to submit an application for connection of the additional / new load via Endeavour Energy's Network Connections Branch to carry out the final load assessment and the method of supply will be determined. Depending on the outcome of the assessment, any required padmount substation or indoor / chamber substations will need to be located within the property (in a suitable and accessible location) and be protected (including any associated cabling) by an easement and associated restrictions benefiting and gifted to Endeavour Energy. Please refer to the attached copy of Endeavour Energy's Mains Design Instruction MDI 0044 'Easements and Property Tenure Rights'. Further details are available by contacting Endeavour Energy's Network Connections Branch via Head Office enquiries on telephone: 133 718 or (02) 9853 6666 from 8am - 5:30pm.

Endeavour Energy has noted the following in the Statement of Environmental Effects (Page 46)

Electrical services

It has been found that the existing electricity infrastructure does not have sufficient spare capacity for the development. The following method of supply is proposed:

- APHS to be supplied with two new kiosk substations, with possibly new HV feeders.
- PPS to be supplied from the existing kiosk substation and a new substation is proposed along the rear services lane.

Other supply opportunities such PPS to be supplied from the existing kiosk substation and additional spare capacity may be required to allow for future developments; these items will be investigated during the design stage by Endeavour Energy.

Endeavour Energy has completed extensive upgrade works to the electricity network in Parramatta CBD with the completion of the East Parramatta Switching Station, located at 140 Macquarie Street (corners Argus Lane and Union Street) and the West Parramatta Zone Substation located at 15 Macquarie Street, Parramatta and the installation of new underground cables to connect these into the existing network. These works have been done in anticipation of the load growth and to help reduce the considerable lead times which can be involved for high voltage electricity supply to major developments. The Parramatta Zone Substation is essentially decommissioned and at present high voltage supply would be provided from the West Parramatta Zone Substation. Depending on the timing of the redevelopment and the load growth / demand in Parramatta CBD, a new zone substation located in the East Parramatta Switching Station will be commissioned, which being closer to the site, would then provide supply to the redevelopment.

Endeavour Energy's Capacity Planning section have advised that although they have not undertaken a detailed load assessment, whilst there is an existing customer connection (including a padmount substation on the PPS Site), given the extent of the proposed redevelopment, the electricity supply to the site will require augmentation. The extent of the required works will not be known until the final load assessment for the redevelopment is completed but potentially could exceed those indicated in the Statement of Environmental Effects.

- Easement Management / Network Access

The following is a summary of the usual / main terms of Endeavour Energy's electrical easements requiring that the land owner:

- o Not install or permit to be installed any services or structures within the easement site.
- o Not alter the surface level of the easement site.
- o Not do or permit to be done anything that restricts access to the easement site without the written permission of Endeavour Energy and in accordance with such conditions as Endeavour Energy may reasonably impose.

It is imperative that the access to the existing electrical infrastructure adjacent and on the site is maintained at all times. To ensure that supply electricity is available to the community, access to the electrical assets may be required at any time. Should proposed works be required to encroach/affect Endeavour Energy's easements, then contact must first be made with the Endeavour Energy's Easement Management Officer, Jeffrey Smith, on 9853 7139 or alternately Jeffrey.Smith@endeavourenergy.com.au

- Asbestos

Endeavour Energy's G/Net master facility model indicates that the site is a location identified or suspected of having asbestos or asbestos containing materials (ACM) present. Whilst Endeavour Energy's underground detail is not complete within G/Net in some areas, in older communities, cement piping was regularly used for the electricity distribution system and in some instances containing asbestos to strengthen the pipe; for insulation; lightness and cost saving.

When undertaking works on or in the vicinity of Endeavour Energy's electricity network, asbestos or ACM must be identified by a competent person employed by or contracted to the applicant and an asbestos management plan, including its proper disposal, is required whenever construction works has the potential to impact asbestos or ACM.

The company's potential locations of asbestos to which construction / electricity workers could be exposed include:

- o customer meter boards;
- o conduits in ground;
- o padmount substation culvert end panels; and
- o joint connection boxes and connection pits.

Further details are available by contacting Endeavour Energy's Health, Safety & Environment via Head Office enquiries on telephone: 133 718 or (02) 9853 6666 from 8am - 5:30pm.

- Vegetation Management

The planting of large trees in the vicinity of electricity infrastructure is not supported by Endeavour Energy. Suitable planting needs to be undertaken in proximity of underground power lines and padmount substations. Tree roots can damage cables and result in power outages. Also cable maintenance or repair works may cause damage to tree roots and impact on the growth of the trees. Trees grown too close to padmount substation can restrict safe access by maintenance workers and overhanging branches or the tree itself falling may damage the substation. This can cause delays in power restoration and may have severe consequences in the event of an emergency. Accordingly only low growing shrubs not exceeding 3.0 metres in height, ground covers and smaller shrubs with non-invasive root systems are the best plants to use. Ideally larger trees should be planted well away from underground cables or installed with a root barrier around the root ball of the plant. Landscaping that interferes with electricity infrastructure may become subject to Endeavour Energy's Vegetation Management program and/or the provisions of the *Electricity Supply Act 1995* (NSW) Section 48 'Interference with electricity works by trees' by which under certain circumstances the cost of carrying out such work may be recovered.

- Public Safety

For work near electricity infrastructure, workers run the risk of receiving an electric shock and causing substantial damage to plant and equipment. Endeavour Energy's public safety training resources, which were developed to help general public / workers to understand why you may be at risk and what you can do to work safely. Please find attached some of the available safety training resources which are also available via Endeavour Energy's website via the following link:

<http://www.endeavourenergy.com.au/wps/wcm/connect/ee/nsw/nsw+homepage/communitynav/safety/safety+brochures>

Demolition work is to be carried out in accordance with Australian Standard AS2601: The demolition of structures (AS 2601). All electric cables or apparatus which are liable to be a source of danger, other than a cable or apparatus used for the demolition works shall be disconnected ie. the existing customer service lines will need to be isolated and/or removed during demolition. Appropriate care must be taken to not otherwise interfere with any electrical infrastructure on or in the vicinity of the site eg. street light columns, electricity cables etc.

Should you wish to discuss this matter, or have any questions, please do not hesitate to contact me. As I am working on different projects across the company's franchise area, to ensure a response contact by email is preferred.

Yours faithfully
Cornelis Duba

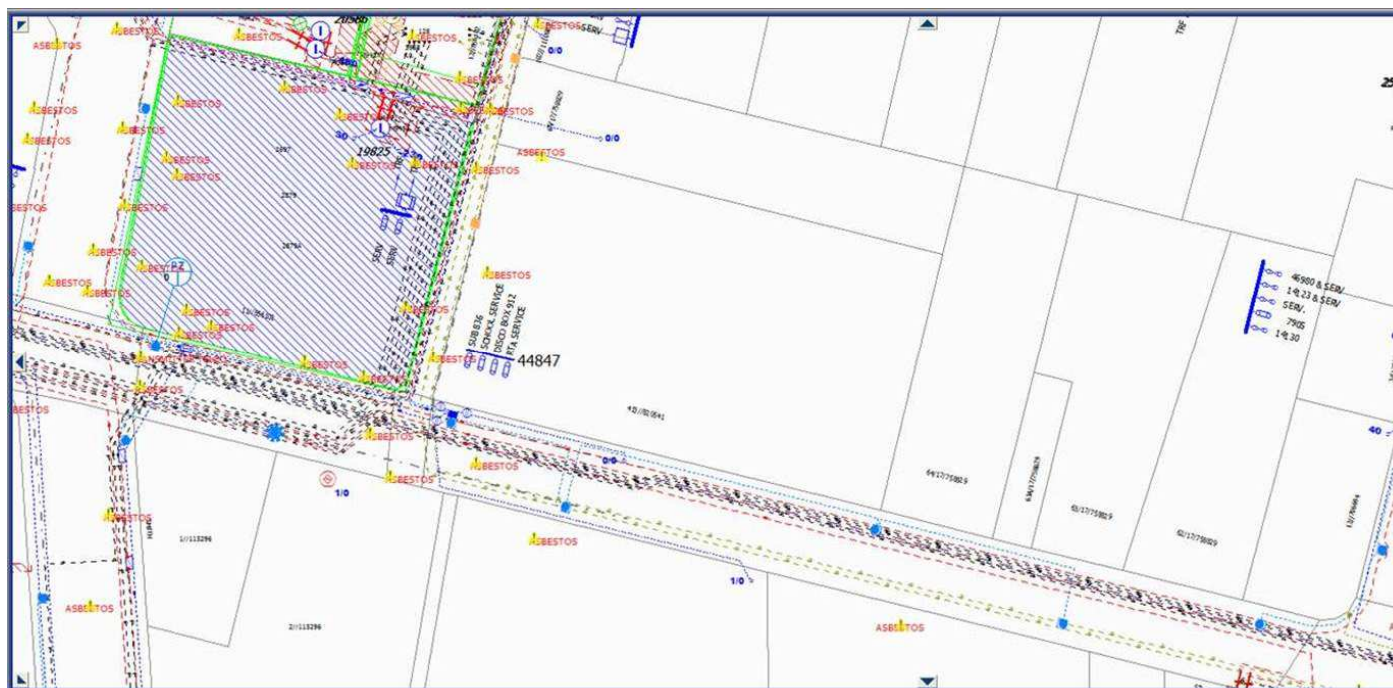
Acting Public Safety Advisor

T: 9853 7896

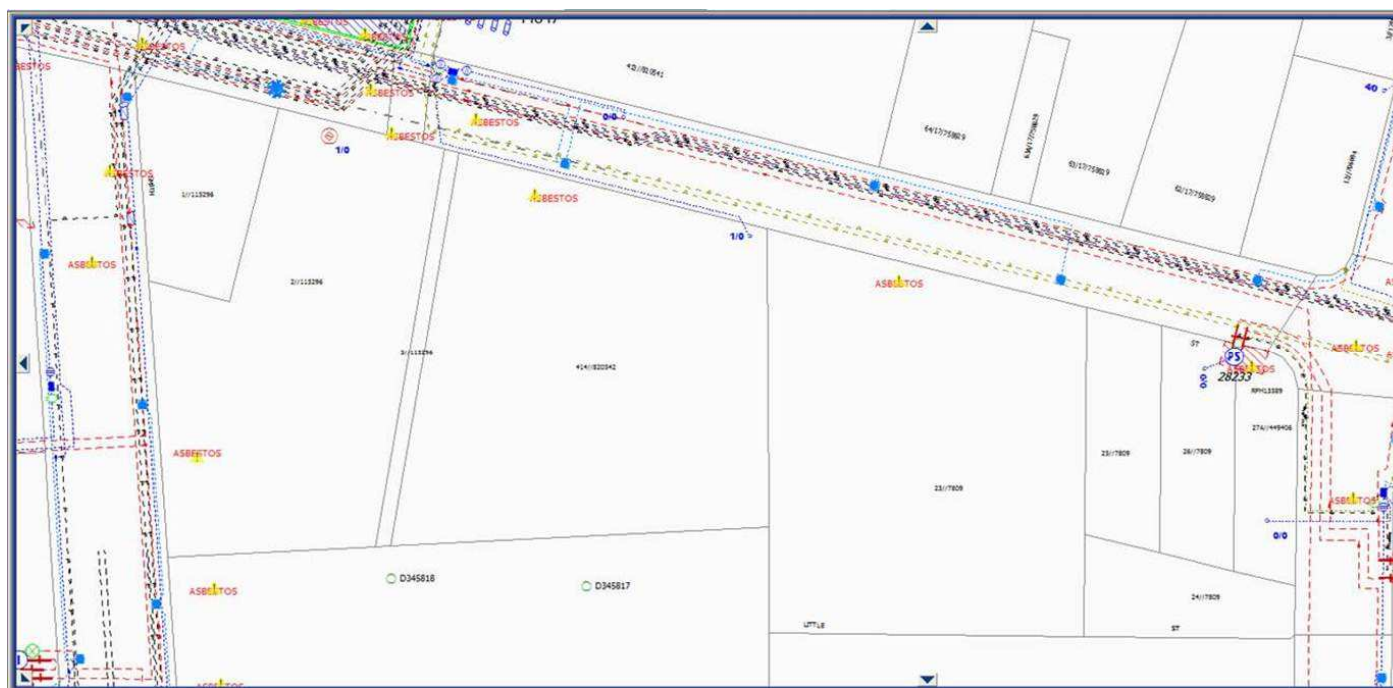
E: cornelis.duba@endeavourenergy.com.au

51 Huntingwood Drive, Huntingwood NSW 2148

www.endeavourenergy.com.au



APH Site 80-100 Macquarie Street, Parramatta



PPS Site 175 Macquarie Street, Parramatta

.....
Think before you print. This message is intended for the addressee named and may contain confidential information. If you are not the intended recipient, please delete it and notify the sender. Views expressed in this message are those of the individual sender and not necessarily the views of the business.
.....