

Wallarrah 2 Coal Project Submission.

Hello. I live in Wyee with my family.

My husband and I moved into the Wyee community 10 years ago for a better quality of life, room to move, with a view to settle down and have a family, and become part of a small semi-rural community. Town photos are at end of this document.

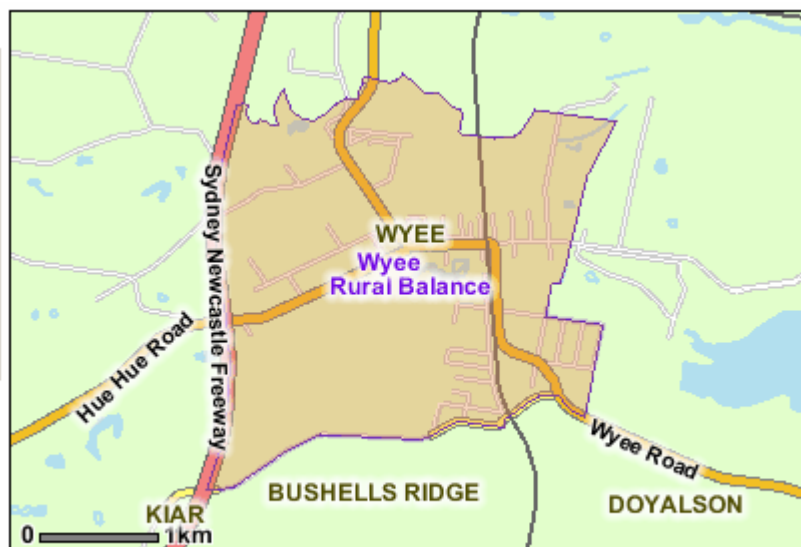
I appreciate the opportunity to make a submission and will try and keep it brief and to the point.

Wyee in brief:

The township is within 1,800 metres line-of-site from the mine shaft area [Town Centre (TC) 4,000m], and 5,100m from the proposed offices [TC 7,500m].

The loaded coal trains are also proposed to travel through Wyee.

Some town photos have been included at end.



© Commonwealth of Australia & [PSMA Australia](#) 2007

ABS Website

2006 Census

In 2006, more than 50% of residents in Wyee were couples with children and single parents.

In the 2006 Census, there were 390 families in Wyee (Urban Centre Localities): 52.6% were couple families with children, 30.8% were couple families without children, 16.7% were one parent families and 0.0% were other families.

In the 2006 Census in Wyee (Urban Centre Localities), 74.4% of occupied private dwellings were family households, 19.9% were lone person households and 3.6% were group households.

Wyee is primarily young working class families in the process of purchasing their homes.

In the 2006 Census, the most common responses for occupation for employed persons usually resident in Wyee (Urban Centre Localities) were Technicians and Trades Workers 21.2%, Labourers 15.4%, Clerical and Administrative Workers 13.6%, Sales Workers 12.5% and Machinery Operators And Drivers 11.8%.

In Wyee (Urban Centre Localities), 23.5% of occupied private dwellings were fully owned, 48.7% were being purchased and 21.3% were rented.

Wyee is on the Council border, residing in the Lake Macquarie Council area – not privy to information that may have been circulated by Wyong Council to its residents. Wyee residents do not receive delivered local papers - such as free local papers provided in other areas.

I remember receiving a newsletter some years ago about the Wallarah 2 Coal Project, and one other newsletter last night (June 1, 2010), indicating that written submissions close June 2!

The mine raises many questions and concerns for me regarding the likely future of our Community and our family. Most alarming however is that, in speaking with others in the Wyee Community, they are unaware that the mine proposal is even on exhibition!

I have concerns including:

- **Coal dust and associated Health risks.**
 - Immediate residents, households along the rail corridor, and those with water tanks where water is collected from exposed roofs and used for drinking.
 - Uncovered coal loads travelling at speed, are sure to generate dust that have not been covered in the reports.
 - The Social Impact Assessment reported that on a bad particle day, operations could have a mortality rate of 1.6 people per day (11.2 wk). Is one death acceptable?
- **Increased train movements through residential areas.**
 - Not just the immediate area, but all the way along the rail corridor to Newcastle.
 - Are these going to be night and day? 24/7.
 - What are the **real life** impacts from the increased noise, train movements and associated dust. I can assure you that a diesel engine or 3 pulling freight has much more of an impact on noise and house vibrations than a v-set commuter train or 50. Contrary to Table 19 Noise Impact Assessment.
 - The impact would be magnified in the still of the night when people are sleeping.
 - Do “rolling stock noise levels” represent a realistic guide?

The Noise Impact Assessment report indicated:

Table 18: Existing and Projected train movements

I have added the last 3 columns for comparison

Description	Total per day	Est avg Carriages per train	Total est. carriages p. d	% of carriages
V-set Commuter	50	6	300	25%
XPT	6	6	36	3%
Explorer	4	6	24	2%
Existing Freight	25/16*	25	400	34%
Wallerah 2 Coal	5-7(8^)	53	424	36%
Total	84		1,184	100%

*Weekend schedule - more realistic number used

^To move 5million tonnes of coal per year – equivalent to 8 x 3,400 tonne capacity trains per day

Based on total trains per day – the Noise Impact Assessment report shows less than a 10% increase on existing levels.

BUT when looking instead at the estimated increase from 760 carriages per day to 1,184 carriages per day **we see an estimated increase of 55.7% as a result of the additional coal trains. More than double the existing levels!**

This also equates to an additional 154,760 carriages/wagon on the line.

The other trains are also not carrying coal / dust.

Please see the Train Movements attachment for workings.

- **What are the consequences, if any, for failure to adhere to environmental and noise restrictions?**
 - We previously lived in a mining/industrial region and often woke up to black soot on our window sills and cars, when dust / ash were released under the cover of darkness.
 - For breaches, would mine operations be forced to close once approval is granted?
 - Or would they be slapped on the wrist, and given a fine that would not make a real impact on profits.
- **Who is going to monitor adherence to approval conditions?**
 - Will they be independent?
 - Will they live locally / be in the community?

- **Increased traffic movements in residential areas as workers cut through Wyee on their way to the mine site.**
 - To believe / report that workers would use Bushells Ridge Road is a fallacy – especially in its current condition. Photos attached at the end.
 - Wyee is likely to become a major thoroughfare (Wyee & Hue Hue Roads in particular). This is concerning with the number of children in the community and the primary school on Wyee Road.
 - Smaller numbers were quoted in the Assessment reports in relation to additional movements. The traffic movements however are likely to be **all at once** rather than staggered due to shift changing. One shift change in particular would be at 11 pm or thereafter.
- **Property values / saleability.**
 - What will be the impact on property values in our community please? Will once prized quarter acre blocks become unsaleable? I do not think that was covered in the reports.
 - Low income families may be unable to afford to move if property prices fall in the area due the proximity of the mine and associated thoroughfare.
- **Assessment reports.**
 - Many of the reports failed to include key areas and localities.
 - Residents should definitely be concerned with claims that only 476 households could be "potentially" directly affected. Especially when households that live along the rail corridor (or very close to) have not even received proper consideration in these studies. **This in itself should ring alarm bells** as the project is being looked at the small picture through rose-coloured glasses.
 - Numbers (e.g. 1120508) were used rather than suburb names to leave you wondering which localities were actually used in their study area.
 - 1120508 (Wyee) was excluded from the study area. Even though its boundary is within 1.8 kms of the mine shafts and that coal trains would be travelling straight through it.
 - The proposers were smart in doing this, as Lake Macquarie Council's Strategic Plan for Wyee shows that Wyee is set to increase by 2000 households by 2031.
 - Lake Macquarie Council was also not listed as being consulted in the Social Impact Assessment.
 - Blue Haven must also have been excluded due to the very low numbers of households surveyed!
 - Only 15 new households requiring rentals for both phases of the project seems very low.
 - What about the families currently renting in Wyee and Blue Haven that move away and push up the rentals in other areas? So too the families that try and buy in other areas and push housing affordable further out of reach of the average family?
 - Other statistics regarding availability of accommodation were sourced during the global financial crisis. This is unlikely to be truly representative.
 - Did the Wallarah 2 Project team try to consult with the broader community? **Only 63 respondents to their survey on a project of this scale is frightening!**
- **Wyee Strategic Plan:**
 - Lake Macquarie City Council is currently preparing a Strategic Plan for Wyee. The location, existing township, railway line, and varying landscape makes Wyee a significant area for future growth. The State Government has acknowledged this, earmarking Wyee as a place that could accommodate 2000 additional dwellings by 2031.
 - At the public meeting for this strategy, a coal mine worker from the gallery indicated that you really need to be 8 kms away from coal operations as a minimum, to avoid

adverse impacts from coal dust. The Wyee boundary is within 1.8 kms and Blue Haven even closer.

- **Amount of related documentation.**
 - Too much for the lay person to read and understand – esp. in 60 days. So we really are depending on you to review the information and make the best overall decision.

I contacted the Wallarah 2 proposers via the email details provided on their website. I asked a straightforward question about the project (as encouraged to ask questions via their website). **Almost 3 weeks later I have still not received a response** – even after following up the email again recently.

I am concerned that the proposers want to be seen as doing the right thing - without possibly doing it

- sending out Newsletters... yes, I can recall 2 locally – the second one (with information regarding the exhibition) was received on June 1 - too late for most to make comment;
- website / ask questions... available, question asked, no response - do people actually receive a response, or is it that you have the ability to ask a question?
- Survey of residents... yes, only 476 households “potentially” directly affected - with 63 responding
- go and visit them at Tuggerah.... call first though to see if the correct person is available to answer your particular question

Are they going to be the same with the project itself??

Whilst numbers of people in the surrounding areas may seem to be relatively low at 15,000 people - we are people Mothers, Fathers, Daughters, and Sons...

This may be only one of many submissions that you receive, but what YOU decide will determine what kind of future my family, and other residents in surrounding localities are likely to have.

Please come and see for yourself – I am happy to show you around.
Come and see the local communities, meet with the people and see why we are concerned. You may be able to belay some of these concerns. There may also be those fully supporting the project.

If, hand on your heart, after reviewing all the documentation and submissions, you would happily move yourself, your children, your extended family / parents into the area following the approval of this mine (including construction and operation), then I can accept the approval.

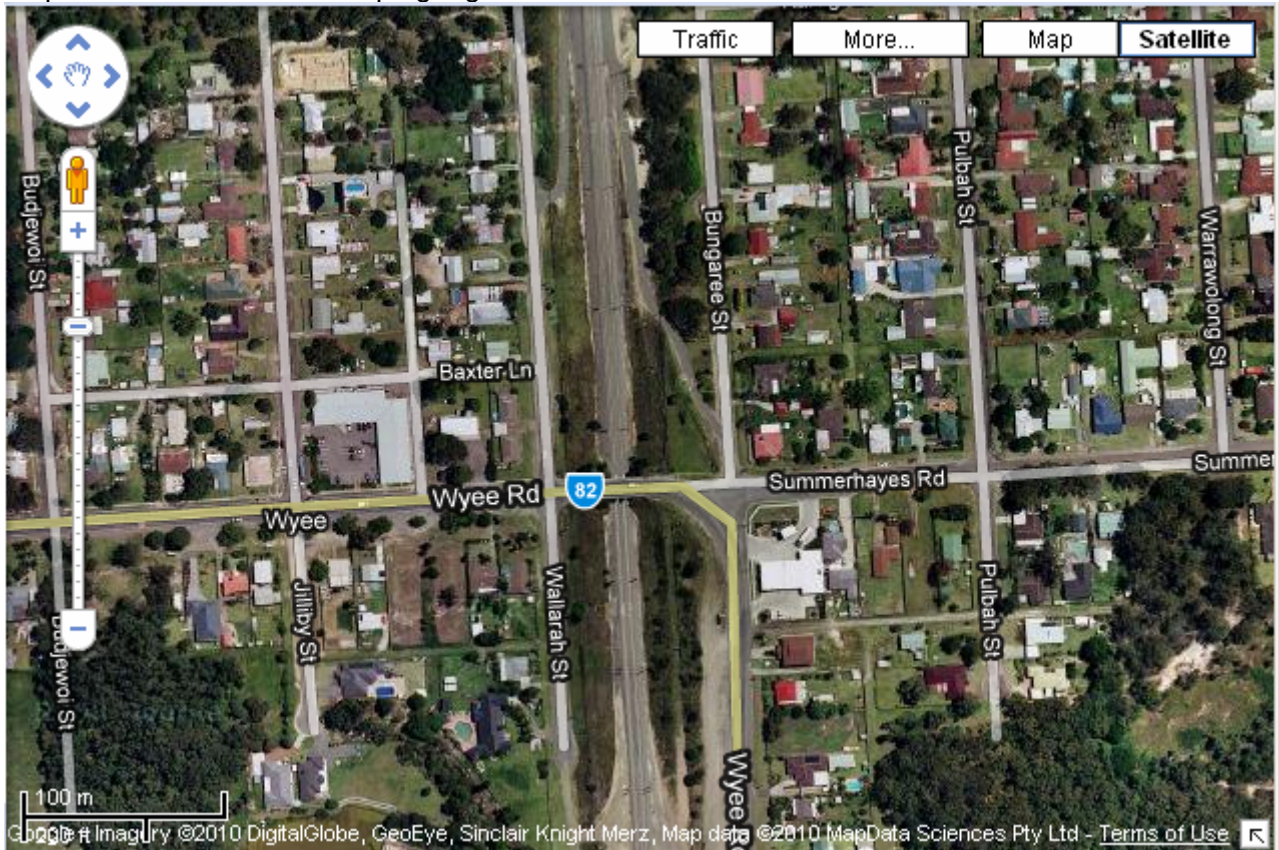
If however you would not, then I implore you to reject it. For my family and others, who have chosen to live in this wonderful area.

Thank you for your time.

Photos below.

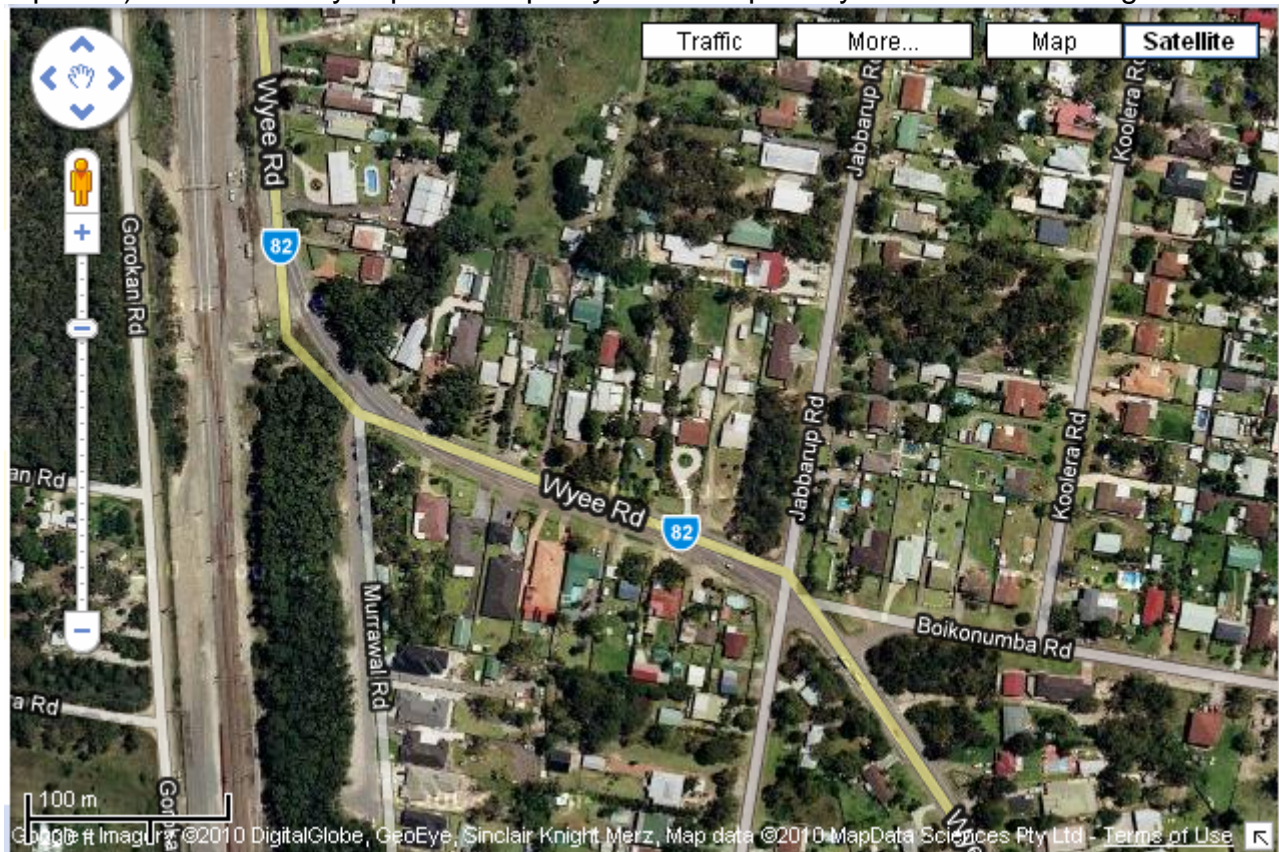
Residents along the rail corridor at Wyee

Maps sourced from www.maps.google.com.au



Some properties are only 20 metres from the rail corridor.

We live some distance away from the train line but we do get vibrations and noise disturbance. The increase of diesel trains transporting coal would **in real terms** (not as reported) most definitely impact our quality of life. Especially in the still of the night.



Bushells Ridge Road



Wyee Village Shops



Local Primary School located on Wyee road.
This road is likely to become a major thoroughfare.



Wyee Community Hall

<http://www.lakemac.com.au/page.aspx?pid=178&dconid=585&vid=11&dpt=Details>

From Lake Mac Council website

Wyee Community Hall is located adjacent to a public reserve, tennis courts and skate park. The facility is suitable for community activities, meetings and functions. Licence capacity 400. Kitchen suitable for reheating only. Timber flooring, stage, ceiling fans, wall heaters, disabled access, disabled toilet facilities, chairs and tables. Managed by Wyee Community Hall - Community Operating Committee.

Photos



Wyee Hall



Wyee Hall

