



OUT12/33679

Ms Heather Warton
Director, Metropolitan and Regional Project North
Department of Planning and Infrastructure
GPO Box 39
Sydney NSW 2324

Dear Ms Warton

RE: Exhibition of State Significant Development Application 5374 Barangaroo Central Waterfront Promenade and Interim Public Domain.

Reference is made to the Department of Planning and Infrastructure (DP&I) letter received 20 November 2012 requesting comments on the accompanying 'Barangaroo Central Waterfront Promenade and Interim Public Domain' State Significant Development Application. NSW Trade and Investment (T&I) understands the EA was on public exhibition from 22 November 2012 to 21 December 2012.

NSW Trade & Investment (Industry, Innovation and Investment & Arts NSW) has undertaken a review of the EA and provided the comments in Attachment A.

In Summary, NSW Trade & Investment is not opposed to the above development application. Arts NSW supports the proposed interim public domain and looks forward to further involvement with the Barangaroo Development Authority as Barangaroo develops over the coming years. Arts NSW are very interested in providing input into future planned arts and cultural infrastructure, and exploring with the Barangaroo Development Authority potential links to the Walsh Bay Arts Precinct.

For any further questions or queries to the above comments please do not hesitate to contact either Marianna Preston at Arts NSW on phone 8218 2206, mobile 0439 981 005 or email marianna.preston@arts.nsw.gov.au or Michael Watson at Industry, Innovation & Investment on 9338 6643 or email michael.watson@business.nsw.gov.au

Kylie Hargreaves
Executive Director

20 December 2012

The project application is seeking approval for the construction of the Barangaroo Central Waterfront Promenade which extends the full width of the Barangaroo Central site for a width of approximately 30m. In addition the application seeks approval for interim public domain works. The proposed works are generally consistent with the approved Concept Plan, relevant planning controls and zoning of the site. Associated with the Interim Public Domain Works, approval is sought for major public and special events on site which may include concerts, festivals, outdoor theatre, up to six (6) major events per annum attracting 15,000 attendees per event. The public domain will be open to the public 24 hours a day, 7 days per week.

The Barangaroo Central Waterfront Promenade and Interim Public Domain are scheduled for completion in 2015 and align with the completion of Headland Park and the first commercial tower in Barangaroo South. An uninterrupted foreshore walk between Anzac Bridge and Woolloomooloo is a central commitment of the State Government in NSW 2021 Plan. The proposed permanent waterfront promenade in the project application is supported by Arts NSW, building upon new pedestrian connections from Darling Harbour to Circular Quay.

Arts NSW is actively working on the realisation of the Walsh Bay Arts Precinct, also a priority project under NSW 2021. Key to the success of this arts & cultural hub at Walsh Bay will be the upgrade of the public domain, unifying Wharf 4/5, Pier 2/3 and the Walsh Bay waterfront. The Barangaroo Central Waterfront Promenade will add to the improved pedestrian access and links to Walsh Bay.

Comments below provided by Arts NSW respond specifically to the relevant sections of the development project application and environmental impacts as follows:

- Consultation (S 4)
- Waterfront Promenade (S 5.3)
- Interim Public Domain (S 5.4)
- Events (S 5.6)
- Environmental Assessment (S 6)
- Summary of Mitigation Measures (S 7)

Consultation (S 4.1, page 19)

Stakeholder consultation is documented in the project application. Arts NSW supports the statement on page 19 *“the cultural life at Barangaroo must contribute and connect to the existing cultural attractions on Sydney’s harbour edge”*.

It is noted under s4.4 *“Agency Consultation”* that NSW Trade & Investment is included on the Barangaroo Planning Reference Group. It is recommended that Arts NSW be added as a key stakeholder contact with an interest in the project. In particular to actively engage with the Barangaroo Development Authority on proposed festivals and outdoor theatres planned for the Barangaroo Public Event Space.

Waterfront Promenade (S 5.3, page 26)

The development application proposes as part of the Barangaroo Central Waterfront Promenade – timber boardwalk along the lower level waterfront edge. Walsh Bay Arts Precinct proposed public domain includes similar waterfront public domain elements

including floating boardwalks, waterfront square and steps / seating and ability for the public to connect to the water. Arts NSW's vision is for a connected waterfront and public domain. Detailing and proposed landscape treatments are of interest to Arts NSW to ensure a consistency in material palette and "look & feel" of built hardscape treatments through to the Walsh Bay Arts Precinct. It is recommended that an Arts NSW representative (Director, Infrastructure) be included in the membership of Barangaroo Development Authority's Technical Working Group – "Public Domain".

Interim Public Domain (S 5.4, page 27 – inc. potential public art)

An interim public domain is proposed as part of the project application. The interim public domain provides a flexible landscaped public space, ensuring good amenity and an activated space whilst successive stages are in construction of Barangaroo. The project application outlines the proposed interim lawn area, temporary signage, and temporary tree plantings. Arts NSW is supportive of a good quality interim public domain ensuring public access, amenity and comfort during the ongoing development of Barangaroo.

It is documented on page 27 of the development application the provision of potential public art and event staging areas *refer Attachment A*. Arts NSW request notification of any future proposals for public art to allow the organisation's input and review.

Events (S 5.6, page 28)

Arts NSW notes the type of public events listed on page 30 of the project application and lists below the types that are of interest to Arts NSW. It is recommended that a close working relationship with Barangaroo Development Authority be formalised. This would provide the opportunity to ensure proposed calendar of cultural events and festivals for Walsh Bay Arts Precinct are complimentary to Barangaroo Central culturally programmed public space.

- Concerts and festivals
- Markets
- Open air cinema and theatre
- Special events such as Australia Day, New Year's Eve, Anzac Day etc.
- Food and wine events

Event Management (S 5.6.3, page 29)

Arts NSW note that an Events Plan of Management has been prepared for the development application. A coordinated approach by Arts NSW and BDA on event management will be required. The future activation of Walsh Bay Arts Precinct also anticipates large events catering to a maximum of 11,000 people on key occasions such as New Years Eve, Australia Day. The cumulative numbers of Barangaroo Central and Walsh Bay Arts Precinct is estimated at 26,000 people. The following key issues stated on page 29 will require a precinct wide approach:

- Access, traffic and transport
- Crowd control
- Emergency management and emergency services
- Acoustic management

Environmental Assessment (S 6, page 33)

The proposed works are expected to potentially cause negative environmental and amenity impacts during construction. The project application details that environmental monitoring and control measures will be in place during construction to minimise and mitigate the potential impacts to adjacent local community.

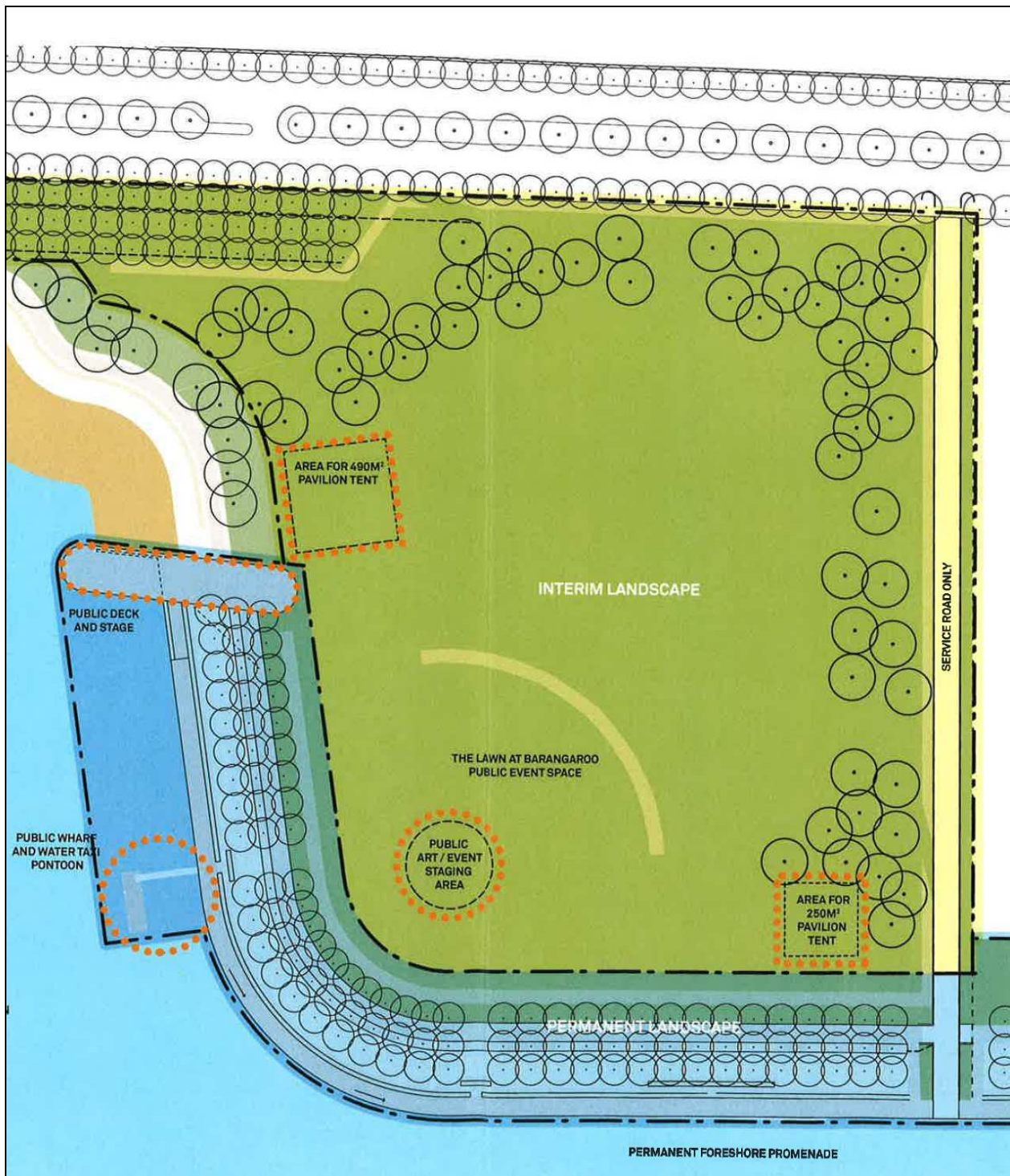
- Construction hours – 7:00am – 6:00pm on Weekdays & 8:00am – 3:00pm on Saturdays (*as documented on page 32*). Construction to commence in January 2014 and is scheduled for completion in March 2015. The spread of heavy truck movements along Hickson Road and additional cumulative traffic during the construction phase for the project application will have impacts on Walsh Bay. In particular, the impact on visitor experience and enjoyment of 500,000 annual visitors to Wharf 4/5, Pier 2/3 and Sydney Theatre.
- Arts NSW have concerns regarding the heavy truck movements along Hickson Road during peak pm periods with confirmation of traffic circulation routes to be confirmed. Noise and vibration impact at the latter end of the working days will potentially impact visitor experience and enjoyment of the arts and cultural activities in Walsh Bay (Wharf 4/5 & Sydney Theatre).
- *Traffic p. 54* – Noise from heavy truck haulage / construction vehicle movements will have an impact on Hickson Road & Walsh Bay (Wharf 4/5 being only 550 metres). Heavy vehicle movements are proposed to be distributed evenly across the day. Arts NSW preference is to minimise heavy truck movements along Hickson Road, north of Towns Place that would heavily impact Walsh Bay, with a preference for haulage movements to be south along Hickson Road.
- *Traffic, Parking and Access p. 57* – Arts NSW supports that the proposed development application does not prevent the ability to “future proof” the introduction of bus and light rail services along Hickson Road. These future transport options are also important to the servicing of Walsh Bay Arts Precinct.
- *Draft Interpretation Strategy p. 61* – the strategy provides for heritage interpretation as part of the proposed works and it is intended that the Interpretation Strategy be finalised and include proposed locations for interpretation as part of the final design. Arts NSW request notification of future proposals for interpretation at Barangaroo Central to allow the organisation’s input and review.

Summary of Mitigation Measures (S 7, page 69)

- *Operational management plan p. 71* - Development application proposes the implementation of “special event parking scheme” with restricted parking arrangements in the area during proposed events & schedules. The schedule also states the implementation of “special event clearways” along Hickson Road should the expected attendance to an event exceed more than 1000pax for example: Cultural Events, Arts / Entertainment, Fairs / Markets.

Arts NSW requests that notification be provided during the special event periods, as restricted parking conditions on Hickson Road will impact Walsh Bay. Timely notification would ensure that informed advice can be provided to residences and tenants of Arts NSW properties at Walsh Bay.

Attachment A



Extract plan of Appendix 3 – Public Facilities Plan – locating future “Public Art”