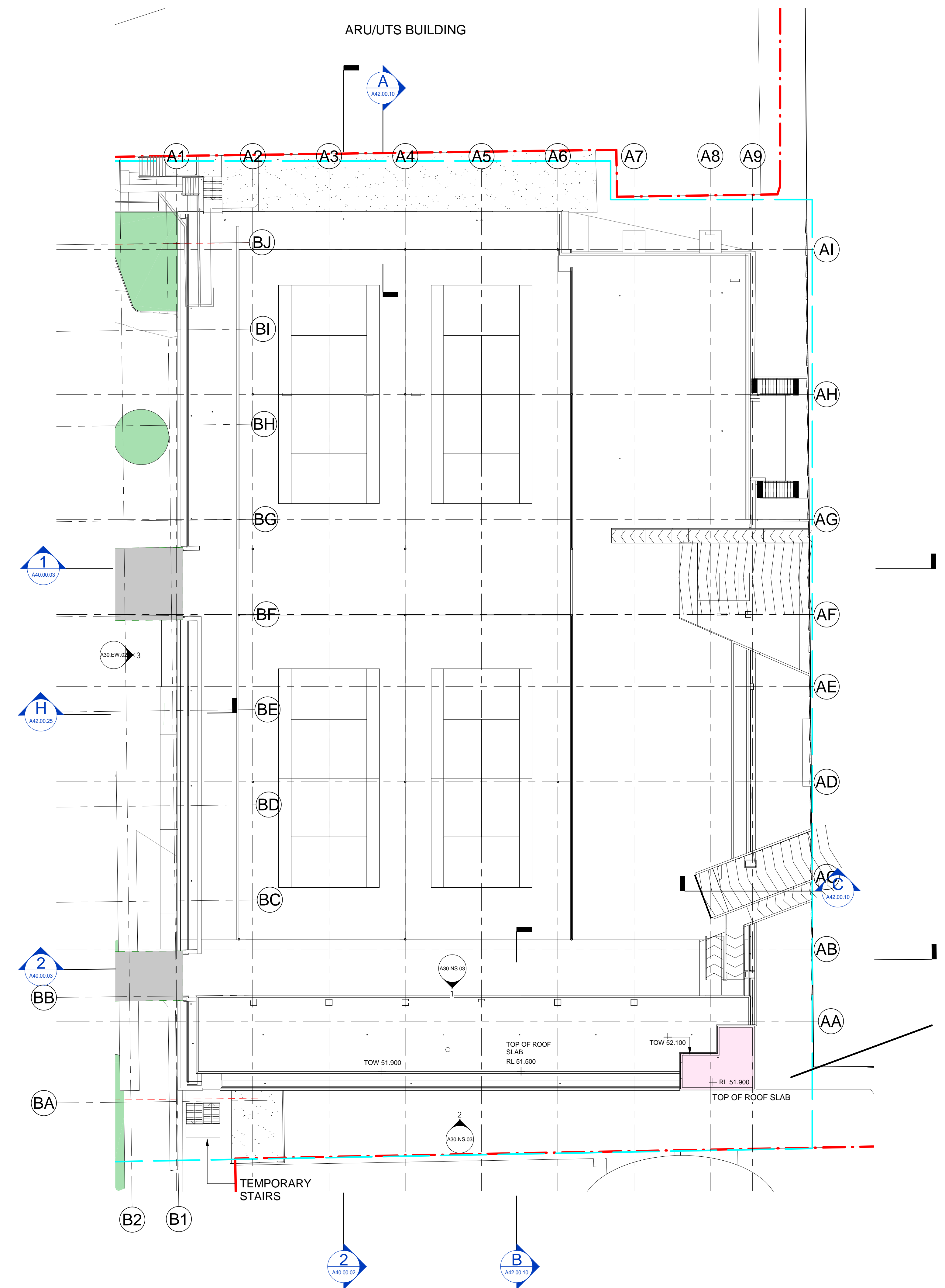
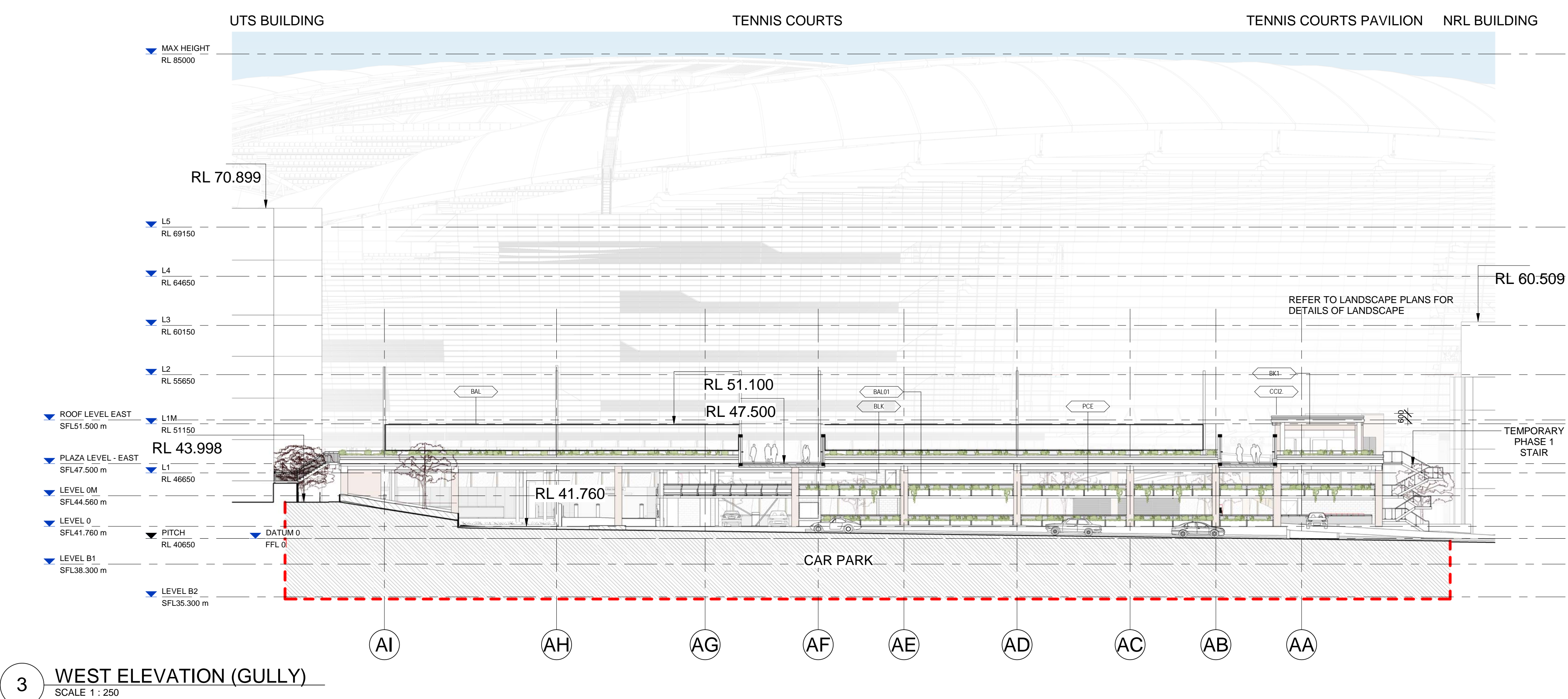
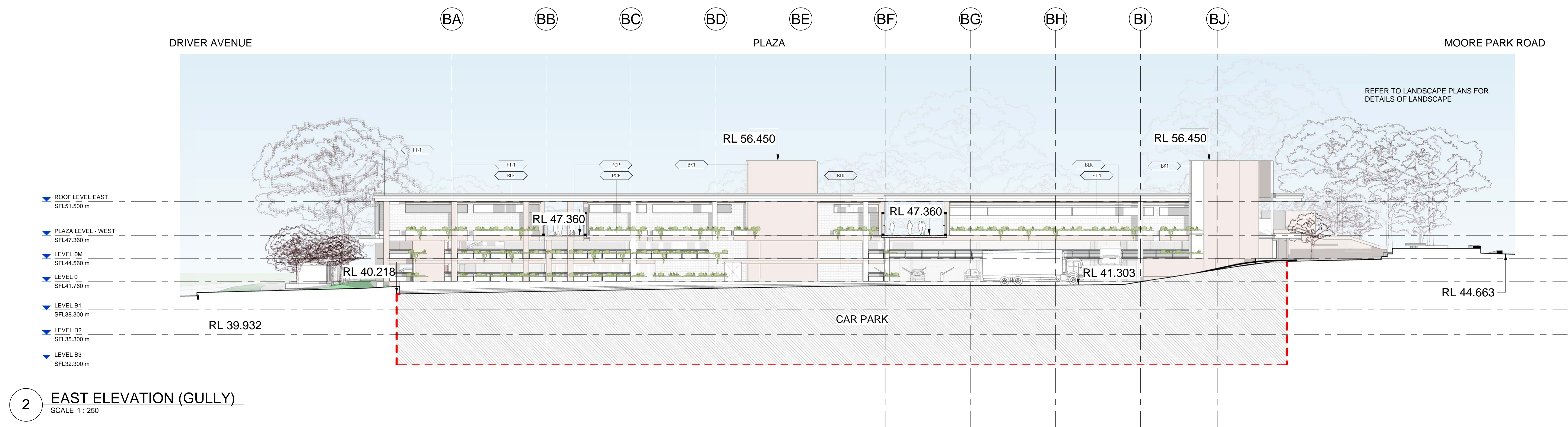
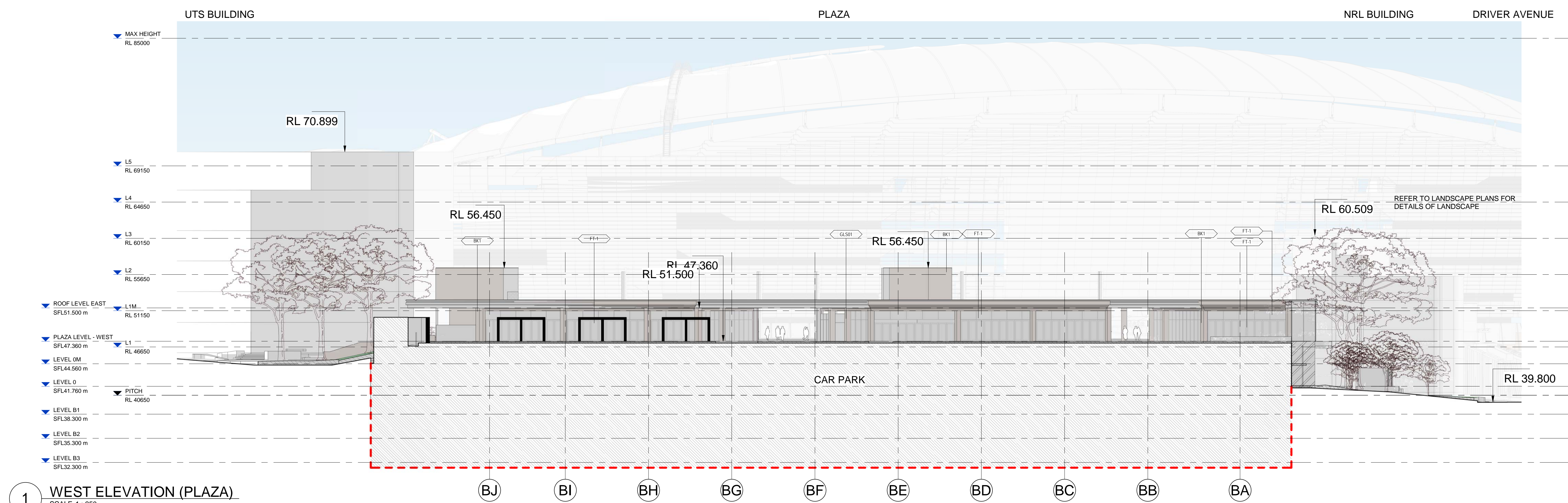


2 SSDA ROOF LEVEL WEST
SCALE 1:250



1 SSDA ROOF LEVEL EAST
SCALE 1:250



Keynote Legend	
Key Value	Keynote Text
B02-A	BALUSTRADE B02-A
B15-B	BALUSTRADE B15-B
BAL	SS BALUSTER
BAL02	INTEGRATED BARRIER SYSTEM
BAL02	INTEGRATED BARRIER SYSTEM
BK1	EXTERNAL BRICK CLADDING
BK2	EXTERNAL BRICK CLADDING - HIT AND MISS BLOCKWORK
BLK	
BWT-1	
BWT-1	
CC12	IN-SITU CONCRETE, CLASS 2
CTW05	CERAMIC WALL TILE
FHLD.	LINEAR DRAIN
FT-1	ALUMINIUM FRAMED GLASS - FIXED AND OPERABLE
FT-2	ALUMINIUM LOUVRES
GLS04	CLEAR GLAZING TO STAIRWELL
P01	13mm MR 92mm STUD/ 13mm MR SHEET
P04	MESH 92mm STUD/ 13mm MR.
P06A	
PCA	PRECAST CONCRETE SLAB EDGES, PLANTERS & PERGOLA
PCP	PRECAST CONCRETE PLANKS
PI-5	PAINT COLOUR 1.
STN01	
W01	

[illegible][illegible]

we are **inSW** Infrastructure
New South Wales

Cox Architecture
Level 6, 155 Clarence Street,
Sydney, NSW 2000, Australia
T + 61 2 9267 9599
F + 61 2 9264 5844
www.coxarchitecture.com.au

Nominated Architects
Joe Agius no. 6491
Russell Lee no. 6387

C O 2

Consultants/Subcontractors

NAME:
ADDRESS:
TEL/FAX:
WEBSITE:
EMAIL:

COX

Discipline	
------------	--

Project No.	218018.00
-------------	-----------

Project

Sydney Football
Redevelopment
Driver Ave, Moore Park
NSW, 2021

Document Control Status:
DETAILED DESIGN

Document Control Status:

FOR INFORMATION

Drawing Title

ARCHITECTURAL S
ELEVATIONS EW

AO DRAWING SHEET

Checked by:	AY
Prepared by:	AY

Approved by: AY

Drawing Number:

A30.EW.02

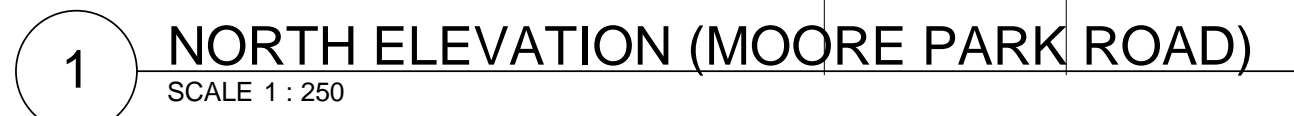
Drawn:

Scale: 1 : 250

Date: 18/01/20

Revision:

North:

[illegible]

