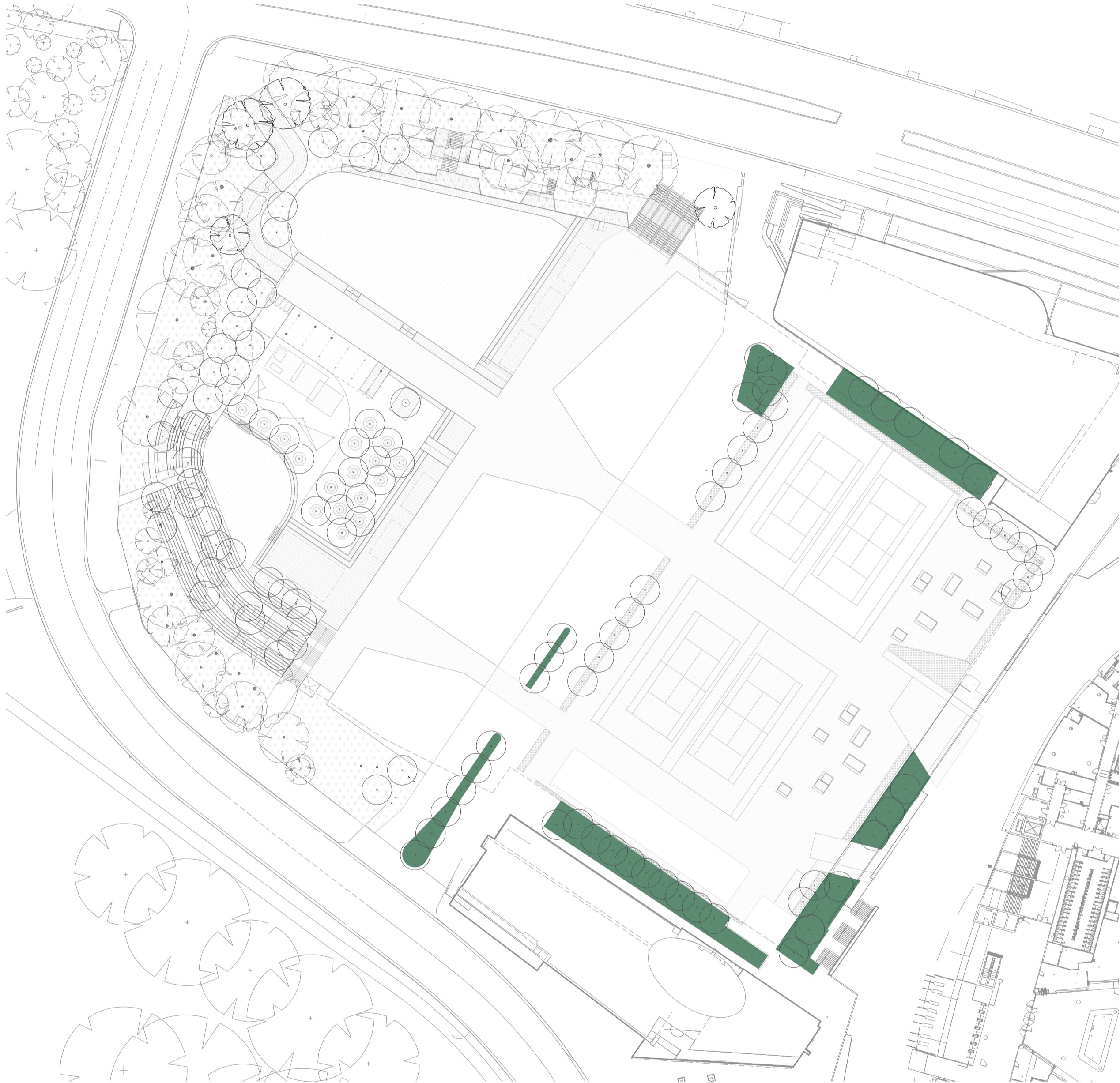




Plant Mix A: Carpark planting


Proposed Planting Mix Type A on deep soil.

- 
- *Livistona australis*
  - *Stenocarpus sinnatus*
  - *Elaeocarpus reticulatis*
  - Birds Nest Fern
  - *Aglaonema 'Cecilia'*\*
  - *Ficus lyrata*\*
  - *Philodendron 'Xanadu'*
  - *Carissa 'Emerald Star'*\*
  - *Epipremnum aureum*\*
  - *Nephrolepis cordifolia*



Mass planting strategy

WARNING



DIAL BEFORE YOU DIG

www.1100.com.au

Services shown on this drawing are approximate only. The exact location is to be confirmed on site by contractor prior to commencement of work.

These coloured drawings shall be read in digital format or colour hardcopy.

These drawings shall be read in conjunction with all relevant information (not limited to legends, schedules, specifications).

These drawings shall be read in conjunction with any Engineers, Architects or other consultant information (not limited to drawings, legends, schedules, specifications).

Check all dimensions and site conditions prior to commencement of any work or procurement or fabrication of any services, materials, fittings or equipment.

Not be reproduced or distributed without prior permission of the Landscape Architect.

NOTES / KEY PLAN

DATE	REV	AMENDMENTS
12/1/22	1	FOR INFORMATION

ASPECT Studios

ASPECT Studios Pty Ltd

Level 1, 78-80 George Street

Redfern NSW 2016

Australia

T 02 9699 7182

www.aspect-studios.com

sydney@aspect-studios.com


ABN 11 120 219 561

PROJECT21081


SFS PLAZA

Driver Avenue, Moore Park, NSW, 2021

CLIENT



NORTH



SCALE A1 | SCALE A3

1:250 | 1:500

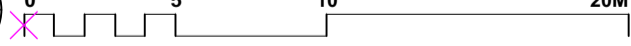
DRAWN

DO

CHECKED

MB

0 5 10 20M



Do not scale - use dimensions & callouts on drawings & schedules.

Refer discrepancies to Landscape Architect for clarification.

STATUS  
SSDA RESPONSE TO SUBMISSION

NOT FOR CONSTRUCTION

DRAWING  
PLANT MIX A: CARPARK PLANTING

DRAWING NO.

LA-902

REVISION

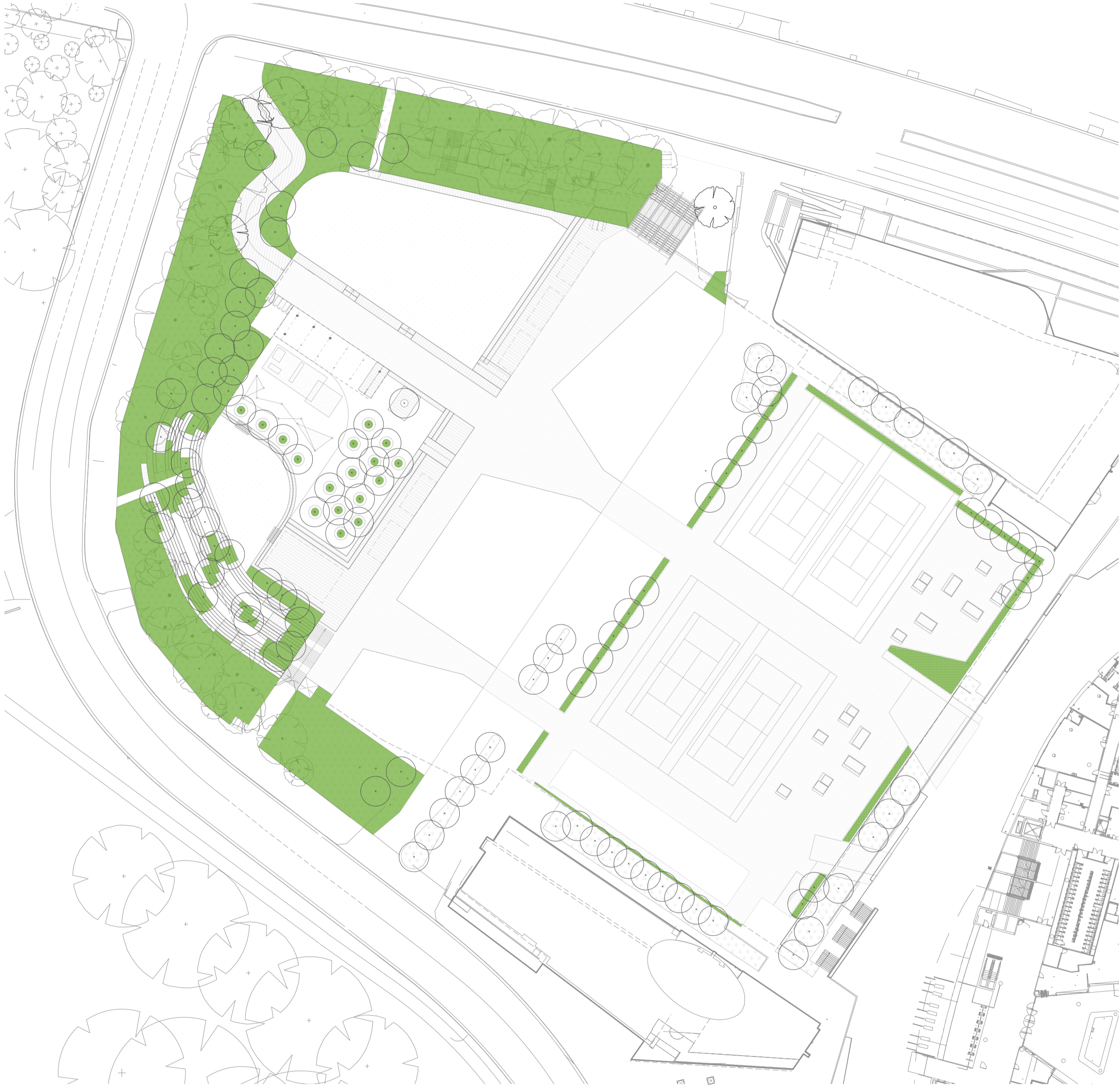
1

Plant Mix B: Plaza Planting

- Carpobrotus glaucescens
- Hardenbergia violacea #
- Westringia mundi
- Myoporum parvifolium ‘Yareena’
- Ficinia nodosa
- Correa alba
- Dichondra repens ‘Silver Falls
- Senecio serpens
- Grevillea juniperina ‘Gold Cluster’
- Banksia serrata’



All plants native except for species nominated with \* nominating exotic # Plant species part of Eastern Suburbs Banksia Scrub



Village Precinct Mass planting strategy

**WARNING**

**DIAL BEFORE YOU DIG**  
www.1100.com.au

Services shown on this drawing are approximate only. The exact location is to be confirmed on site by contractor prior to commencement of work.

These coloured drawings shall be read in digital format or colour hardcopy.

These drawings shall be read in conjunction with all relevant information (not limited to legends, schedules, specifications).

These drawings shall be read in conjunction with any Engineers, Architects or other consultant information (not limited to drawings, legends, schedules, specifications).

Check all dimensions and site conditions prior to commencement of any work or procurement or fabrication of any services, materials, fittings or equipment.

Not be reproduced or distributed without prior permission of the Landscape Architect.

**NOTES / KEY PLAN**

DATE	REV	AMENDMENTS
12/1/22	1	FOR INFORMATION

ASPECT Studios

ASPECT Studios Pty Ltd  
Level 1, 78-80 George Street  
Redfern NSW 2016  
Australia  
T 02 9699 7182  
www.aspect-studios.com  
sydney@aspect-studios.com  
ABN 11 120 219 561

PROJECT  
SFS PLAZA  
Driver Avenue, Moore Park, NSW, 2021



**NORTH**

SCALE A1 | SCALE A3

1:250 | 1:500

DRAWN DO

CHECKED MB

0 5 10 20M

Do not scale - use dimensions & callouts on drawings & schedules.  
Refer discrepancies to Landscape Architect for clarification.

STATUS  
SSDA RESPONSE TO SUBMISSION

**NOT FOR CONSTRUCTION**

DRAWING  
PLANT MIX B: PLAZA PLANTING

DRAWING NO. **LA-903**

REVISION **1**