



It has come to our attention, that the plans for the Sydney West Metro will potentially impact our operations at Clyde where we have a lease with Transport NSW.

Stay Upright obviously fully supports the need to improve Public Transport in Sydney, however we have significant concerns regarding the impact this project is going to have on our Clyde Rider Training Centre and our ability to service the community with access to mandatory Rider Training courses.

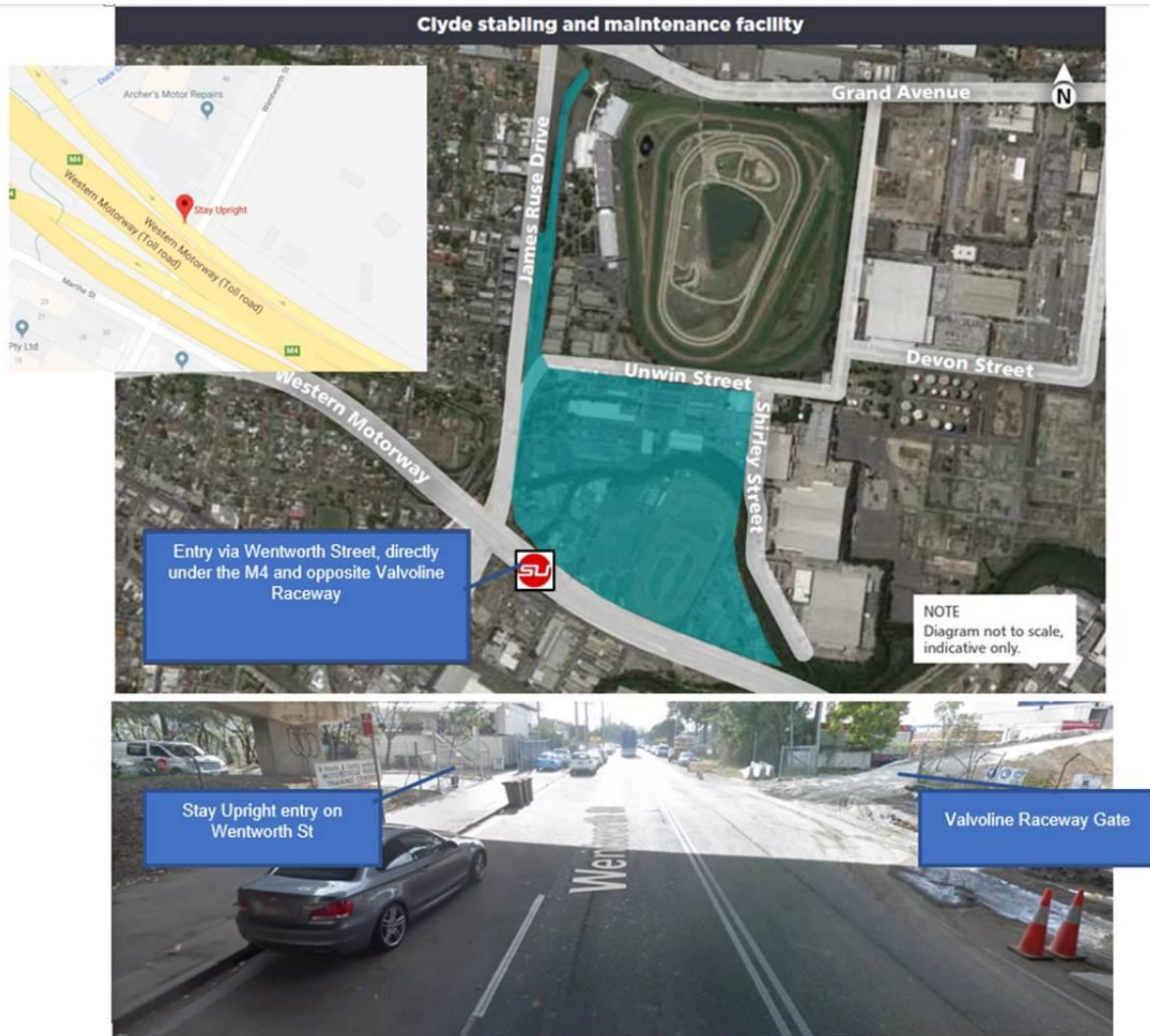
Background Information

By way of providing background information, the Clyde Rider Training centre services the **Sydney Central** region, capturing both locals to that region and those traveling from surrounding regions to attend a mandatory licensing course. Stay Upright operates the centre as an accredited provider on behalf of the Roads and Maritime Services, which now falls under the Transport for NSW Banner (Education and Insights). Stay Upright has run this facility since 1990, and we see annual training volumes averaging 8500 customer per year for Licensing courses.

Our Concerns and Questions

As you are aware, the Clyde Rider Training Centre is located at 30 Wentworth St (corner of Martha) directly under the M4 and is accessed from Wentworth St. We are situated directly opposite the Valvoline Raceway at Granville and are directly opposite one of their access driveways. This can be seen in the maps and images below.

According to the EIS released on the Sydney West Metro project, the green shaded areas on the below map is the land which will be used for the Clyde Stabling and Maintenance Facility, and this land is directly opposite our current location. We imagine there will be large infrastructure development for this project with possible road closures and a significant increase of trucks and other heavy vehicles accessing the property. This is likely to have a significant impact on our operations and potentially put our novice and vulnerable motorcycle riders at risk.



Our first concern relates to access to our leased property. As noted above, we access the property via Wentworth Street, 7 days a week between 6am and 10pm. As noted above, we envisage that there will be road closures and large heavy vehicles along Wentworth St as the project accesses their land. If Wentworth Street is to be closed at any stage during the project, then an alternative entry to our premises will be required. Additionally, if it is expected that the project will also utilise the land we lease, then an alternative venue will need to be sought.

If we are to create a new entry into the premises, Stay Upright would propose doing so via Martha Street. Prior to the WestConnex project in 2014/2015, Stay Upright operated 5 training ranges with ample storage from the same location, with the larger site backing straight onto Martha Street. The entry was via Martha Street and can be seen in the diagrams below. It would be possible to recreate an entrance via Martha Street, however, due to the height restrictions associated with the new M4 bridges (as part of the WestConnex project), the entry would need to be close to the corner of



Wentworth Street (as indicated in the drawing below). The reason for this is that that the WestConnex bridge very low and will not allow for Ambulance to proceed under it. Ambulances may be called to our Clyde Rider Training Site, should a customer injury themselves during their course. Currently, should an Ambulance be required, they have a full height access path that runs alongside our training ranges, with entry off Wentworth St. We would propose putting a driveway with pedestrian pathway from Martha St, running parallel to Wentworth Street inside the property boundaries, which would require the removal of some landscaping (shown in the picture below) and the new pathway / driveway would finish where the current entrance way inside our fence is, joining the current Ambulance pathway, so that should an Ambulance be required, it can access our site and training ranges. This entrance would also be used by customers and Staff to access our site.

With a new entry being created, to ensure 100% security and safety of our customers there will need to be additional internal fencing installed to prevent them walking directly onto the training ranges, and potentially in front of a moving, powered motorcycle that is being operated by a novice rider.



Our second major concern is relation to the safety of our customers. Our customers are novice learner riders who could potentially face an increased presence in heavy vehicles on the roads they are required to ride when attending the Clyde Rider Training Centre. As noted above, in order to proceed from a Learners Motorcycle Licence to a Provisional Licence, which must be done within 12 months of obtaining your Learners Licence, customers are required to attend a Rider Training Centre and complete the Pre-Provisional Motorcycle Licence Course including MOST. In this course, the customers are required to bring their own motorcycle to the training centre, or hire a bike from Stay Upright. The full day course will see the customers ride into the centre early in the morning, departing on the motorcycle late in the afternoon, after a full day of training and testing. Further, approximately halfway through the course, the customer participating in this type of course is required to complete



a 1.5hr road ride. Currently, the route for the road ride exits our driveway on Wentworth Street, turning left and then heading onto Kay Street. While we can amend the route used for the Road Ride, we have significant concerns for the safety of our customers should there be an increase in the number of trucks and heavy vehicles now accessing Wentworth Street, further, potentially accessing a driveway directly across from our current driveway. These are novice riders who are still learning and honing their roadcraft skills and this is putting them in unnecessary harms risk. You may recall reports of a recent fatality in McGraths Hill on Windsor Road where a motorcycle exited a driveway in front of a truck.

Finally, we would like to understand how long the development project will last and when it is likely to commence. This will help us plan appropriately and work with Transport in order to make modifications to the current premises, or locate new premises. As can be imagined, land in Sydney Central is difficult to acquire and expensive. The land we currently leased was priced into our tendered and subsequently agreed contract with the Roads and Maritime Services for the delivery of these courses. The current land we occupy has little use outside of Rider Training due to its positioning underneath the M4, and its height restrictions. For this reason, the rent on this land is priced cheaply and in accordance with its potential use. Finding an alternative venue, of its size, is likely to result in significant additional rental costs incurred by Stay Upright which have not been incorporated into our agreement with the RMS and will result in a requirement to vary our contract to recoup these additional and unprecedented expenses.

Our Previous Experience with the WestConnex Project

As previously noted, prior to 2015 Stay Upright operated 5 Rider Training Ranges from the current location, however, with the WestConnex project, we were required to either relocate or find an alternative solution to utilising the land we had for Rider Training. Stay Upright worked with RMS Properties to make the alterations to the Clyde Rider Training Centre to accommodate the WestConnex project on Martha Street. Stay Upright's expertise and liaison with contractors for this project meant that we were able to continue to run all courses without interruption. We would welcome a similar experience with the Sydney West Metro Stabling and Maintenance Site project and are keen to work closely with the Sydney West Metro Project Team, Transport NSW and Roads and Maritime Services to ensure our ability to continue to fulfil our contracted requirements for Rider Training are maintained, and the community is not impacted in any way.

Annaliese Cawood

**General Manager
Stay Upright**