

All drawings may not be reproduced or distributed without prior permission from the architect.

1. Powdercoated: Dark Bronze Frames
2. Powdercoated:Light Bronze Fins
3. Spandrel
4. Concrete/ Barestone
5. Charcoal Louvres
6. Powdercoated: Charcoal Pearl Matt Fins
7. Glass Louvres (Operable)
8. Aluminium Cladding
9. Metal Balustrade
10. "Z" Purlins - Charcoal
11. Glass recessed
12. Tensile Steel Mesh for Climbing Plants



3	18.09.20	DA Submission	TF	DE
2	18.02.20	DA Submission	TF	DE
1	07.02.20	DA Submission	TF	DE
Revision	Date	Description	Initial	Checked

S12109_Doma
Honeysuckle Drive, Newcastle

East Hotel Elevation

Scale	1:150 @A1 1:300 @A3
Drawn	Checked
Project No.	S12109
Status	FOR INFORMATION
Plot Date	25/9/2020 5:42 PM
Plot File	S:\12100-12199\S12109_Doma_HoneysuckleDr160_Documents\... Images\200915_DA Amendments Report\Amended Sections\
Drawing No.	[Revision]

A07.006 [3]

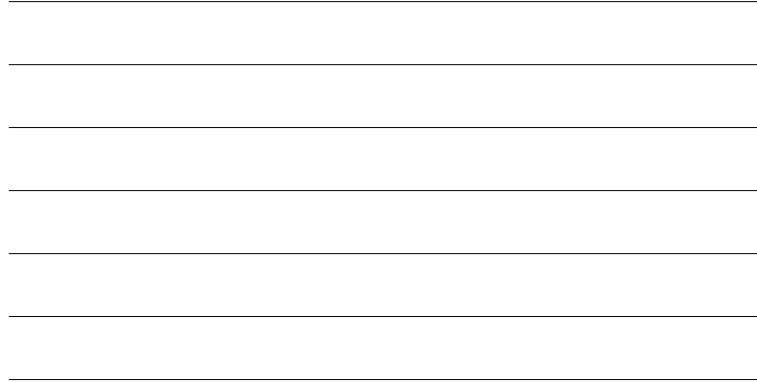
Melbourne 1 Nicholson Street
Melbourne VIC 3000 Australia
T 03 8664 6200 F 03 8664 6300
email melb@batessmart.com.au
<http://www.batessmart.com.au>

Sydney 43 Brisbane Street
Surry Hills NSW 2010 Australia
T 02 8354 5100 F 02 8354 5199
email syd@batessmart.com.au
<http://www.batessmart.com.au>

Bates Smart Architects Pty Ltd ABN 68 094 740 986

All drawings may not be reproduced or distributed without prior permission from the architect.

1. Powdercoated: Dark Bronze Frames
2. Powdercoated:Light Bronze Fins
3. Spandrel
4. Concrete/ Barestone
5. Charcoal Louvres
6. Powdercoated: Charcoal Pearl Matt Fins
7. Glass Louvres (Operable)
8. Aluminium Cladding
9. Metal Balustrade
10. "Z" Purlins - Charcoal
11. Glass recessed
12. Tensile Steel Mesh for Climbing Plants



4	18.09.20	DA Submission	SO	DE
3	14.02.20	DA Submission	SO	DE
2	18.02.20	DA Submission	TF	DE
1	07.02.20	DA Submission	TF	DE
Revision	Date	Description	Initial	Checked

North Elevation



Scale	1:150 @A1 1:300 @ A3
Drawn	Checked
Project No.	S12109
Status	FOR INFORMATION
Plot Date	25/9/2020 4:26 PM
Plot File	S:\12100-12199\S12109_Dema_HoneysuckleDr70_CAD\Plots\12109A07.00[12] - North-east Elevation.dwg [Revision]
Drawing No.	

A07.001[4]

Bates Smart Architects Pty Ltd ABN 68 094 740 986

Check all dimensions and site conditions prior to commencement of any work, the purchase or ordering of any materials, fittings, plant, services or equipment and the preparation of shop drawings and/or the fabrication of any components.

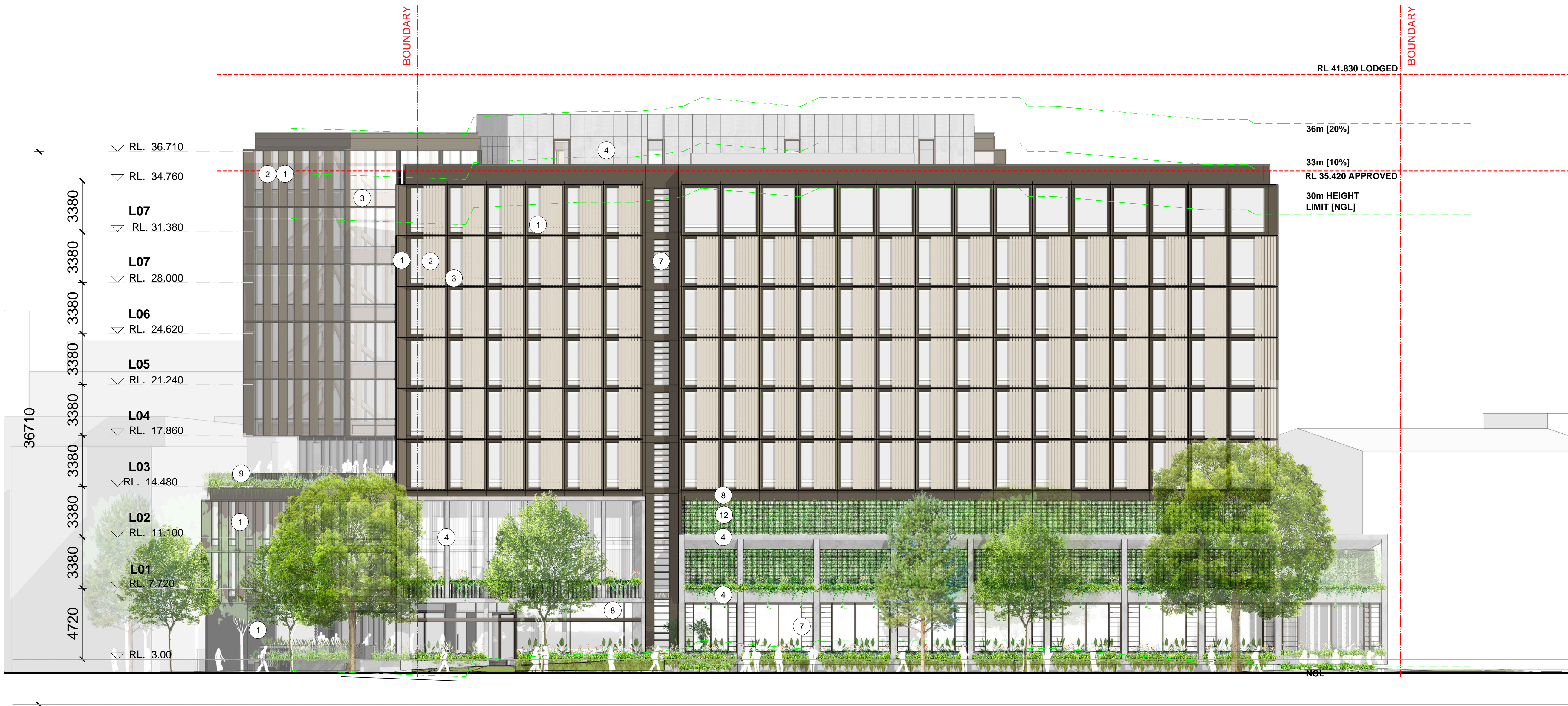
All drawings to be read in conjunction with all architectural documents and all other consultants documents.

Do not scale drawings - refer to figured dimensions only. Any discrepancies shall immediately be referred to the architect for clarification.

All drawings may not be reproduced or distributed without prior permission from the architect.

MATERIALS

1. Powdercoated: Dark Bronze Frames
2. Powdercoated:Light Bronze Fins
3. Spandrel
4. Concrete/ Barestone
5. Charcoal Louvres
6. Powdercoated: Charcoal Pearl Matt Fins
7. Glass Louvres (Operable)
8. Aluminium Cladding
9. Metal Balustrade
10. "Z" Purlins - Charcoal
11. Glass recessed
12. Tensile Steel Mesh for Climbing Plants



4	18.09.20	DA Submission	SO	DE
3	14.02.20	DA Submission	SO	DE
2	18.02.20	DA Submission	TF	DE
1	07.02.20	DA Submission	TF	DE
Revision	Date	Description	Initial	Checked

S12109_Doma Honeysuckle Drive, Newcastle

West Elevation

Scale	1:150 @A1	1:300 @ A3
Drawn		Checked
Project No.	S12109	
Status	FOR INFORMATION	
Plot Date	25/9/2020 4:26 PM	
Plot File	S:\12100-12199\S12109_Doma_Honeysuckle\Dr\70_CAD\Plots\... \A07.002[2] - North-west Elevation.dwg	
Drawing No.		[Revision]

A07.002[4]

Melbourne 1 Nicholson Street
Melbourne VIC 3000 Australia
T 03 8664 6200 F 03 8664 6300
email melb@batessmart.com.au
http://www.batessmart.com.au

Sydney 43 Brisbane Street
Surry Hills NSW 2010 Australia
T 02 8354 5100 F 02 8354 5199
email syd@batessmart.com.au
http://www.batessmart.com.au

Bates Smart Architects Pty Ltd ABN 68 094 740 986

BATESSMART

Check all dimensions and site conditions prior to commencement of any work, the purchase or ordering of any materials, fittings, plant, services or equipment and the preparation of shop drawings and/or the fabrication of any components.

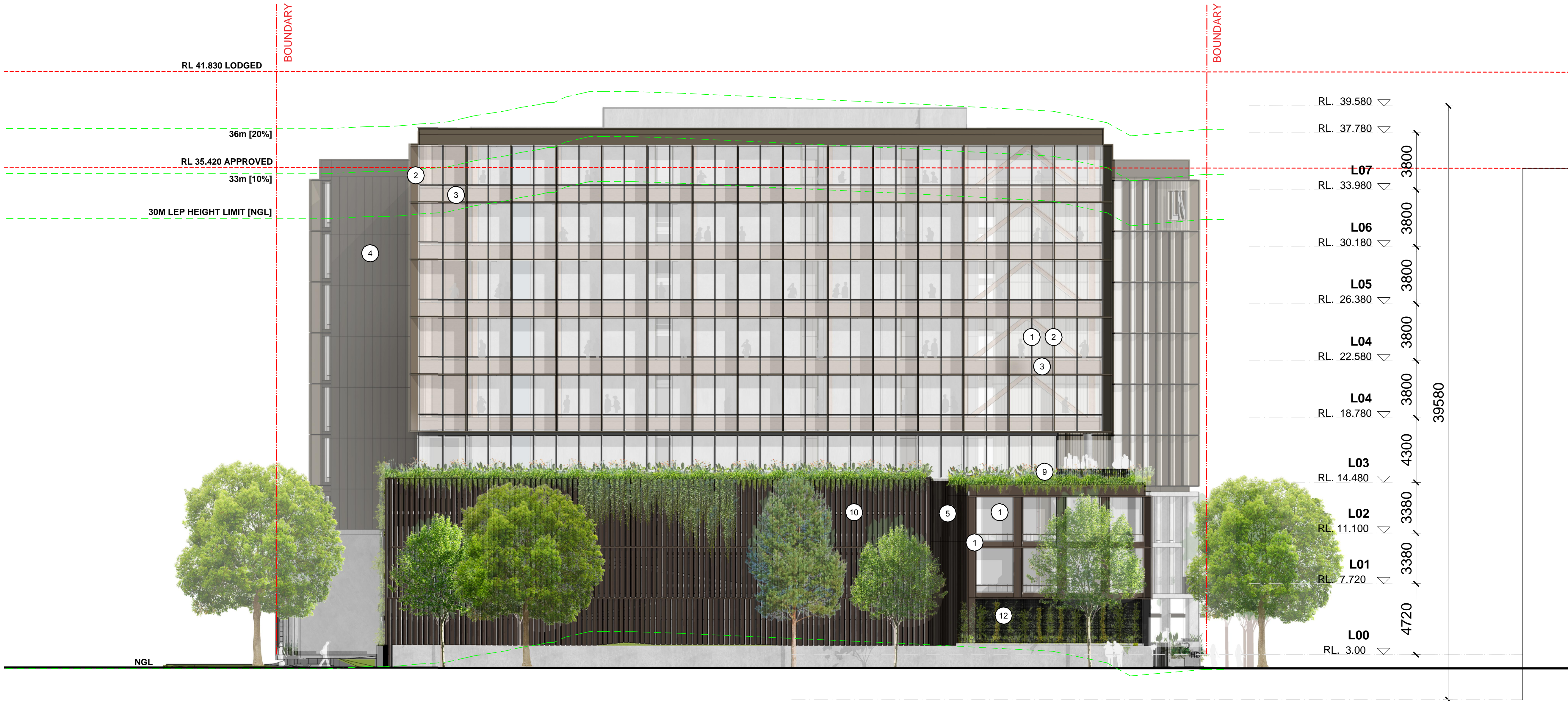
All drawings to be read in conjunction with all architectural documents and all other consultants documents.

Do not scale drawings - refer to figured dimensions only. Any discrepancies shall immediately be referred to the architect for clarification.

All drawings may not be reproduced or distributed without prior permission from the architect.

MATERIALS

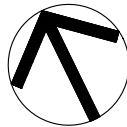
1. Powdercoated: Dark Bronze Frames
2. Powdercoated:Light Bronze Fins
3. Spandrel
4. Concrete/ Barestone
5. Charcoal Louvres
6. Powdercoated: Charcoal Pearl Matt Fins
7. Glass Louvres (Operable)
8. Aluminium Cladding
9. Metal Balustrade
10. "Z" Purlins - Charcoal
11. Glass recessed
12. Tensile Steel Mesh for Climbing Plants



4	18.09.20	DA Submission	SO	DE
3	14.02.20	DA Submission	SO	DE
2	18.02.20	DA Submission	TF	DE
1	07.02.20	DA Submission	TF	DE
Revision Date	Description	Initial	Checked	

S12109_Doma
Honeysuckle Drive, Newcastle

East Elevation



Scale	1:150 @A1 1:300 @ A3
Drawn	Checked
Project No.	S12109
Status	FOR INFORMATION
Plot Date	25/9/2020 4:25 PM
Plot File	S:\12100-12199\S12109_Doma_HoneysuckleDr\70_CAD\Plots\... \A\A07.003[2] - East Elevation.dwg
Drawing No.	[Revision]

A07.003[4]

Melbourne 1 Nicholson Street
Melbourne VIC 3000 Australia
T 03 8664 6200 F 03 8664 6300
email melb@batessmart.com.au
http://www.batessmart.com.au

Sydney 43 Brisbane Street
Surry Hills NSW 2010 Australia
T 02 8354 5100 F 02 8354 5199
email syd@batessmart.com.au
http://www.batessmart.com.au

Bates Smart Architects Pty Ltd ABN 68 094 740 986

BATESSMART

Check all dimensions and site conditions prior to commencement of any work, the purchase or ordering of any materials, fittings, plant, services or equipment and the preparation of shop drawings and/or the fabrication of any components.

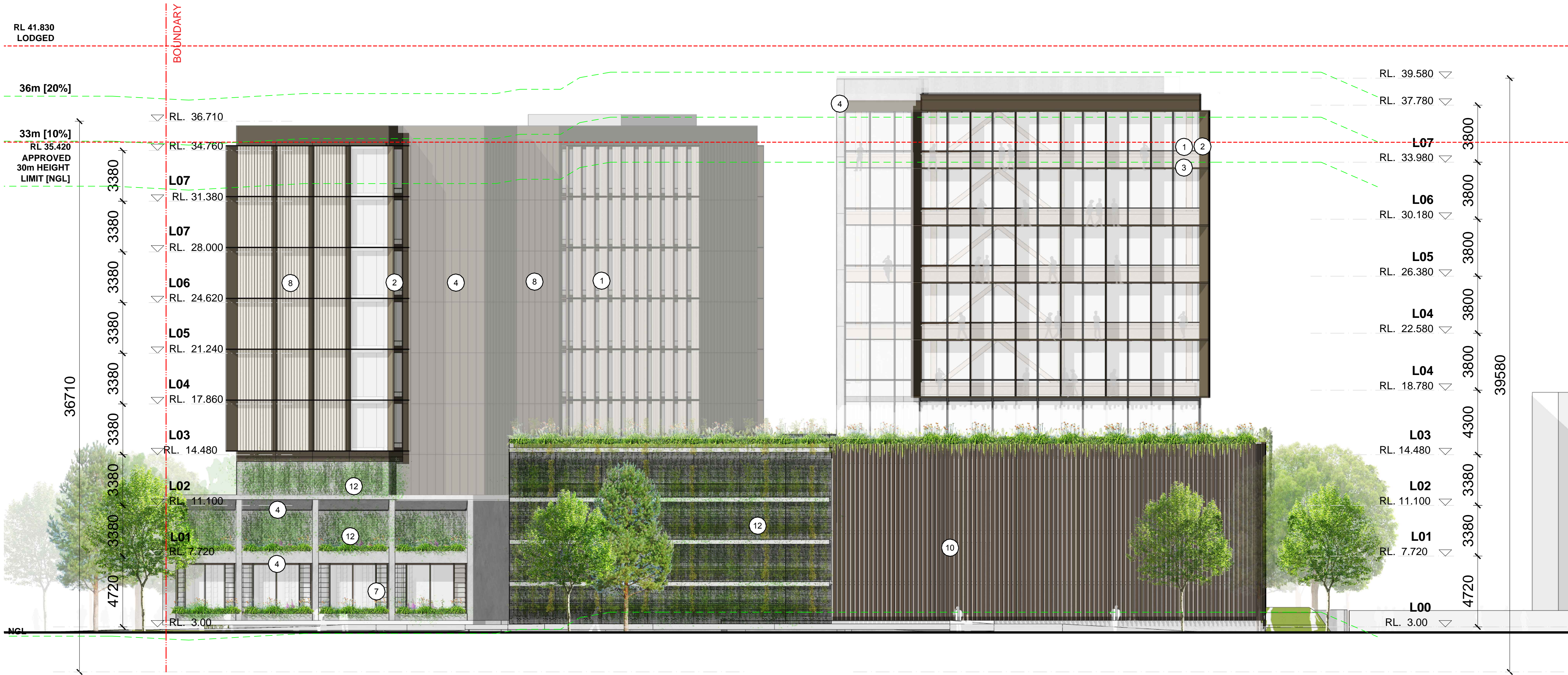
All drawings to be read in conjunction with all architectural documents and all other consultants documents.

Do not scale drawings - refer to figured dimensions only. Any discrepancies shall immediately be referred to the architect for clarification.

All drawings may not be reproduced or distributed without prior permission from the architect.

MATERIALS

1. Powdercoated: Dark Bronze Frames
2. Powdercoated:Light Bronze Fins
3. Spandrel
4. Concrete/ Barestone
5. Charcoal Louvres
6. Powdercoated: Charcoal Pearl Matt Fins
7. Glass Louvres (Operable)
8. Aluminium Cladding
9. Metal Balustrade
10. "Z" Purlins - Charcoal
11. Glass recessed
12. Tensile Steel Mesh for Climbing Plants



4	18.09.20	DA Submission	SO	DE
3	14.02.20	DA Submission	SO	DE
2	18.02.20	DA Submission	TF	DE
1	07.02.20	DA Submission	TF	DE
Revision Date	Description	Initial	Checked	

S12109_Doma Honeysuckle Drive, Newcastle

Southt Elevation

Scale	1:150@A1	1:300 @ A3
Drawn	Checked	
Project No.	S12109	
Status	FOR INFORMATION	
Plot Date	25/9/2020 4:26 PM	
Plot File	S:\12100-12199\S12109_Doma_HoneysuckleDr\70_CAD\Plots\... \A\A07.004[2] - South Elevation.dwg	
Drawing No.	[Revision]	

A07.004[4]

Melbourne 1 Nicholson Street
Melbourne VIC 3000 Australia
T 03 8664 6200 F 03 8664 6300
email melb@batessmart.com.au
http://www.batessmart.com.au

Sydney 43 Brisbane Street
Surry Hills NSW 2010 Australia
T 02 8354 5100 F 02 8354 5199
email syd@batessmart.com.au
http://www.batessmart.com.au

Bates Smart Architects Pty Ltd ABN 68 094 740 986

BATESSMART

Check all dimensions and site conditions prior to commencement of any work, the purchase or ordering of any materials, fittings, plant, services or equipment and the preparation of shop drawings and/or the fabrication of any components.

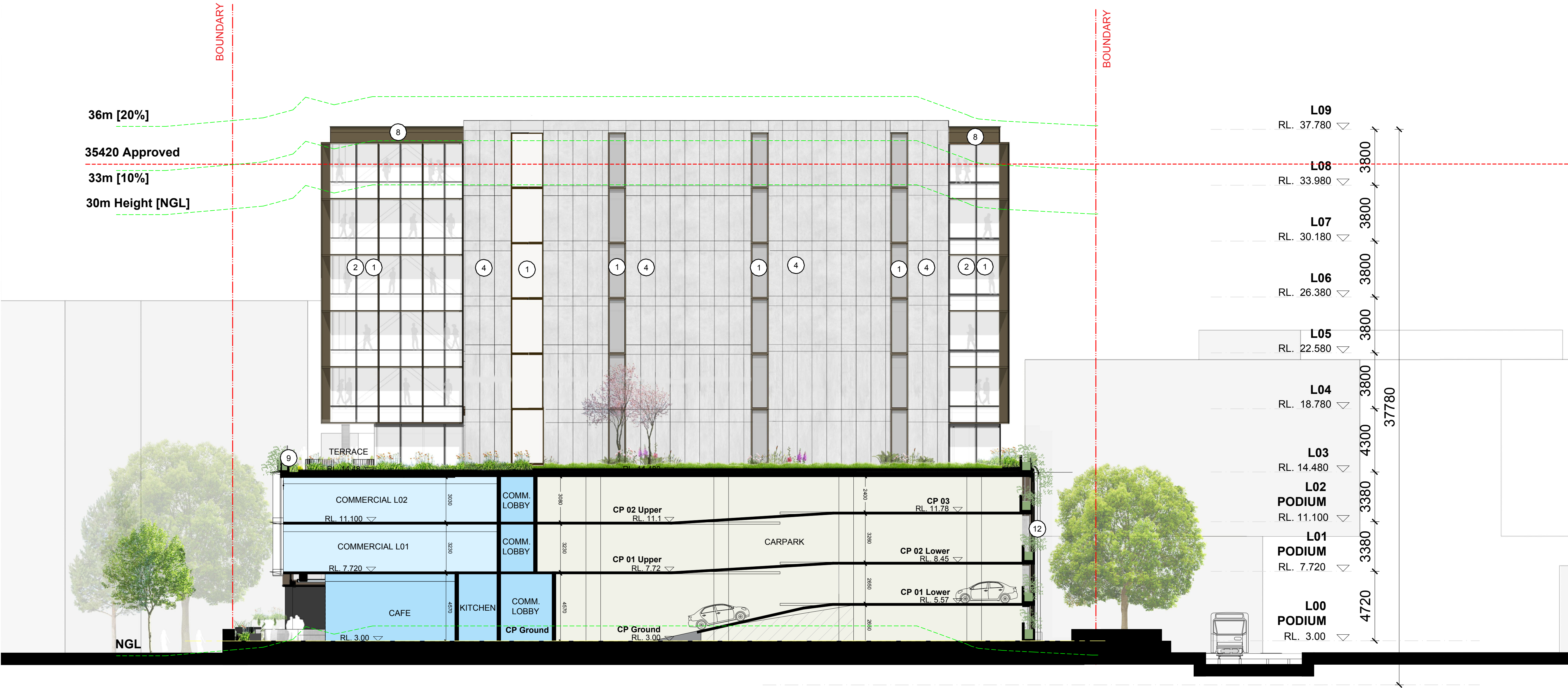
All drawings to be read in conjunction with all architectural documents and all other consultants documents.

Do not scale drawings - refer to figured dimensions only. Any discrepancies shall immediately be referred to the architect for clarification.

All drawings may not be reproduced or distributed without prior permission from the architect.

MATERIALS

1. Powdercoated: Dark Bronze Frames
2. Powdercoated:Light Bronze Fins
3. Spandrel
4. Concrete/ Barestone
5. Charcoal Louvres
6. Powdercoated: Charcoal Pearl Matt Fins
7. Glass Louvres (Operable)
8. Aluminium Cladding
9. Metal Balustrade
10. "Z" Purlins - Charcoal
11. Glass recessed
12. Tensile Steel Mesh for Climbing Plants



3	18.09.20	DA Submission	TF	DE
2	18.02.20	DA Submission	TF	DE
1	07.02.20	DA Submission	TF	DE
Revision	Date	Description	Initial	Checked

S12109_Doma
Honeysuckle Drive, Newcastle

West Commercial Elevation

Scale	1:150 @A1	1:300 @ A3
Drawn	Checked	
Project No.	S12109	
Status	FOR INFORMATION	
Plot Date	25/9/2020 5:27 PM	
Plot File	S:\12100-12199\S12109_Doma_HoneysuckleDr\50_DocumentaL...Images\200915_DA Amendments Report\Amended Sections\	
Drawing No.	[Revision]	

A07.005[3]

Melbourne 1 Nicholson Street
Melbourne VIC 3000 Australia
T 03 8664 6200 F 03 8664 6300
email melb@batessmart.com.au
http://www.batessmart.com.au

Sydney 43 Brisbane Street
Surry Hills NSW 2010 Australia
T 02 8354 5100 F 02 8354 5199
email syd@batessmart.com.au
http://www.batessmart.com.au

Bates Smart Architects Pty Ltd ABN 68 094 740 986

BATESSMART