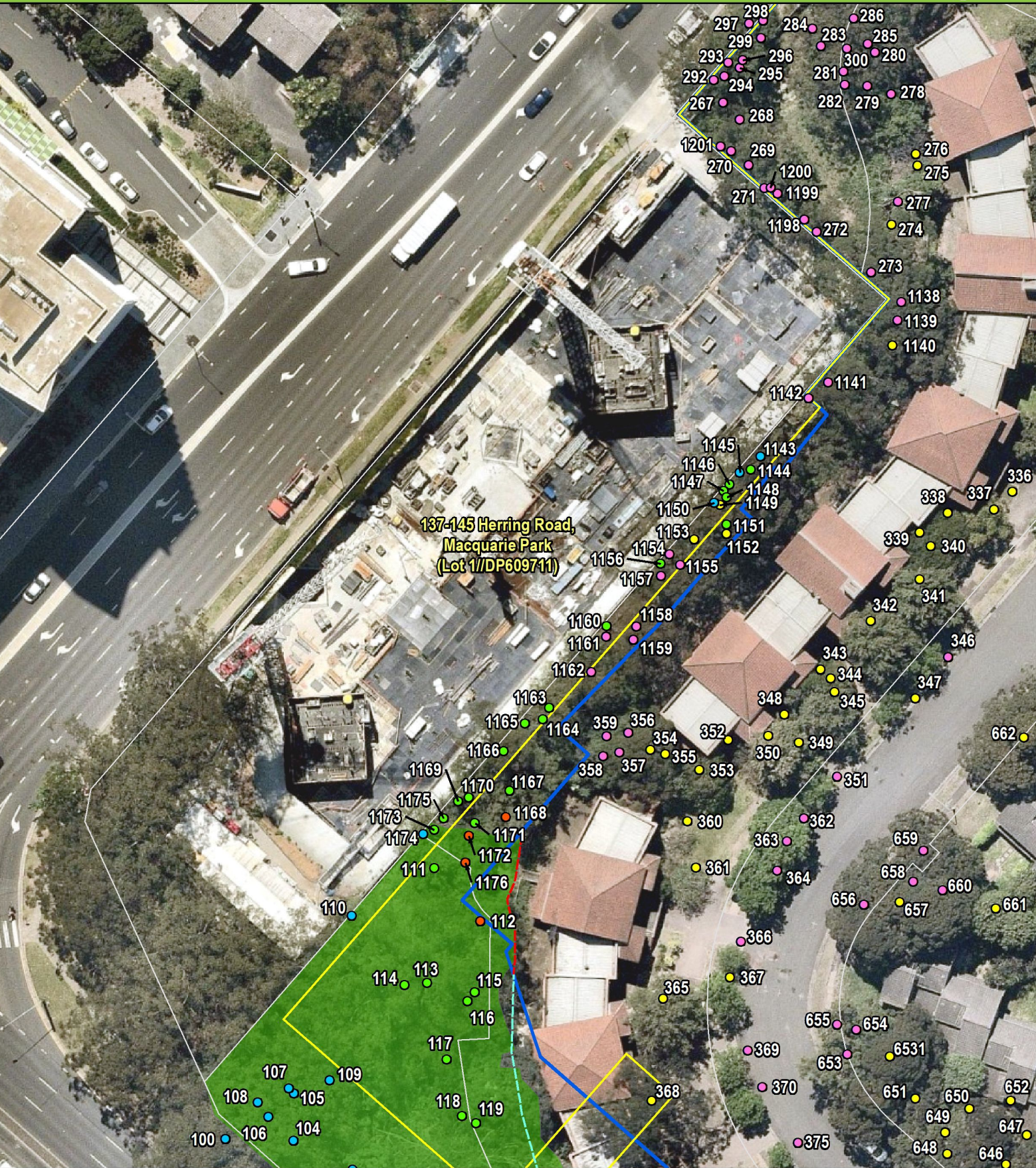


Shared Boundary with 137-143 Herring Road - 2018/2019 Development Plan Changes



- Legend**
- Development Footprint (2018)
 - Development Footprint (2019)
 - Cadastre
 - Zone 1 Turpentine - Grey Ironbark open forest (Good)
 - Retaining Wall (to be retained)
 - Retaining Wall (to be removed)

- Tree Impacts**
- Retained (no change)
 - Previously removed in development, now retained
 - Removed during demolition (no change)

- Previously removed during development, now removed in demolition
- Removed during development (no change)

0 5 10 20
Metres
Datum/Projection:
GDA 1994 MGA Zone 56
Prepared by: KR
Date: 13-01-2020
Imagery Captured: 22-10-2019