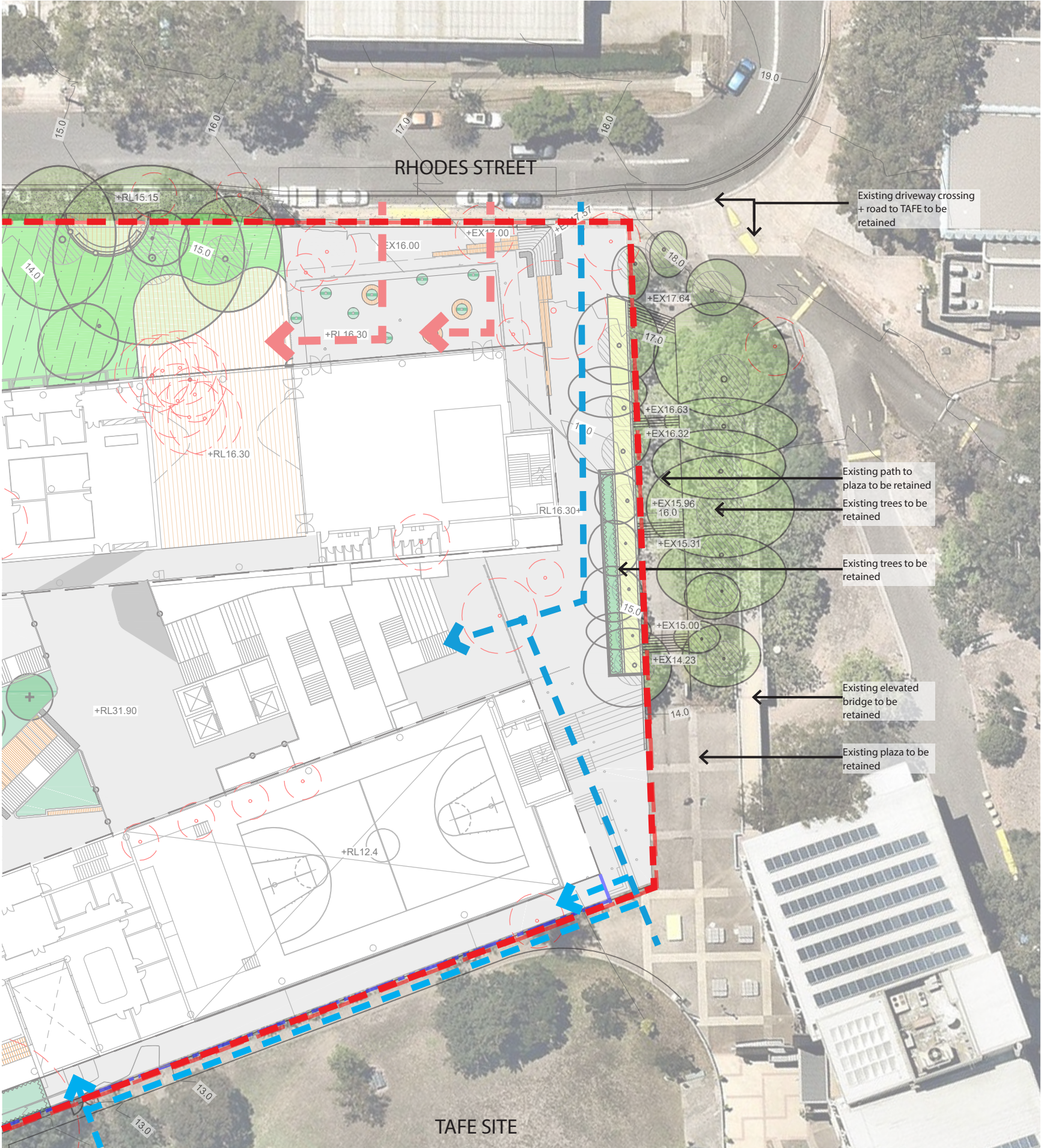


STUDENT ARRIVAL AND DEPARTURE



Legend

High School Students Entrance

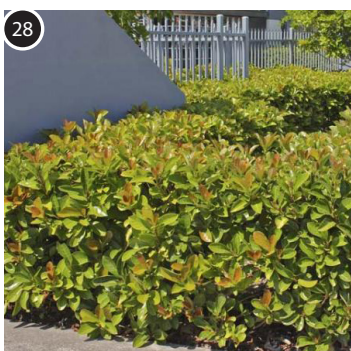
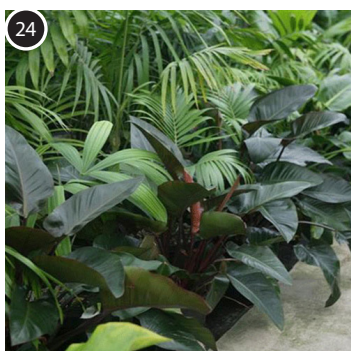
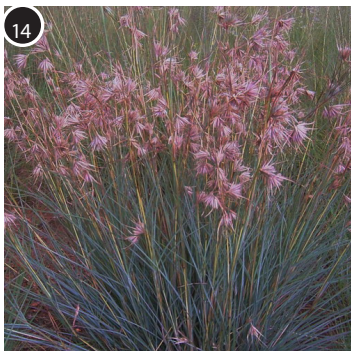
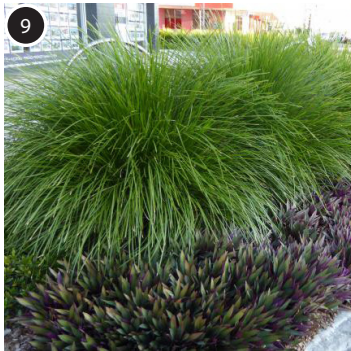
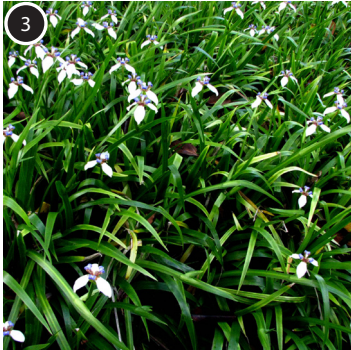
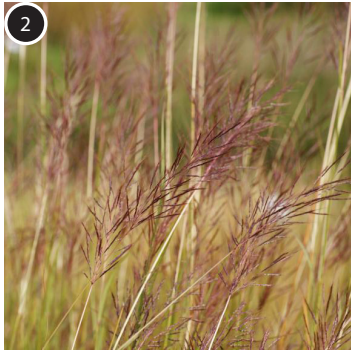
Primary School Students Entrance

Site Boundary

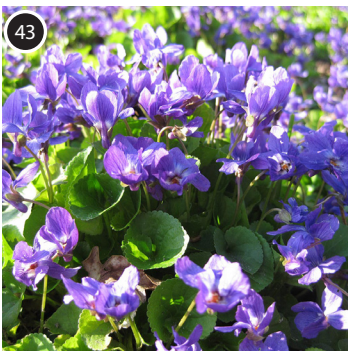
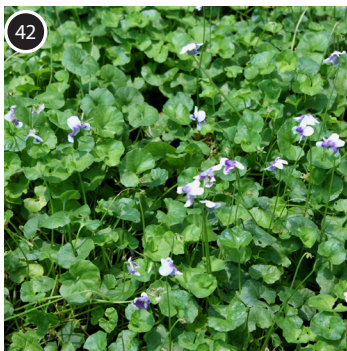
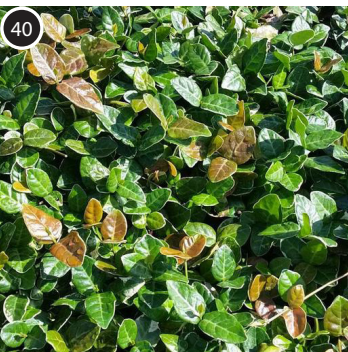
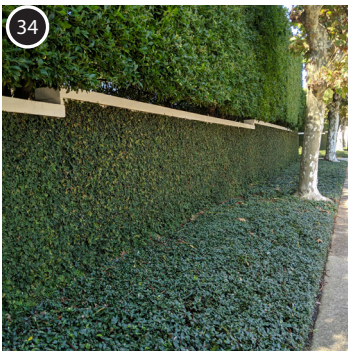
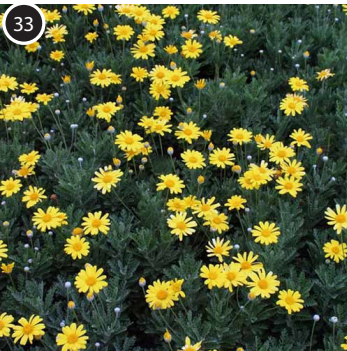


INDICATIVE PLANTING SCHEDULES

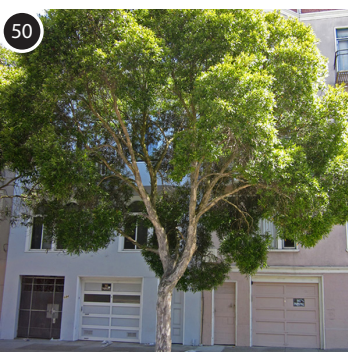
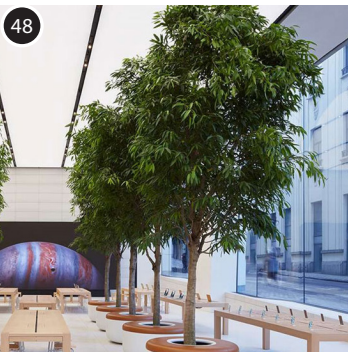
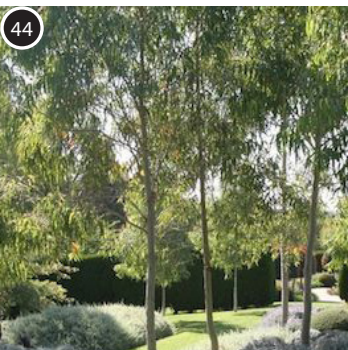
GRASS PLANTING & ACCENTS



GROUNDCOVERS & CLIMBERS



TREES



GRASS PLANTING & ACCENTS

Central Landscape Grasses		
Code	Botanic name - Common name	Origin
1	Anigozanthus spp – Kangaroo Paw	Native
2	Bothriochloa bladhii – Australian Blue Stem	Exotic
3	Neomarica gracilis – Walking Iris	Exotic
4	Dianella tasmanica Emerald Arch – Native flax	Native
5	Imperata cylindrica Rubra – Japanese Blood Grass	Exotic
6	Liriope muscari – Liriope Isabella	Exotic
7	Liriope muscari - Liriope Samantha	Exotic
8	Lomandra longifolia verday – Spikey headed mat rush	Native
9	Lomandra lime tuff – Mat rush	Native
10	Miscanthus sp – Chinese silver grass	Exotic
11	Miscanthus Yaku Jima – Eulalia grass	Exotic
12	Ophiopogon japonicus – Mondo Grass	Exotic
13	Poa labillardieri – Tussock grass	Native
14	Themedia triandra – Kangaroo grass	Native
Accent Planting & Heavy Shade		
15	Acanthus Mollis flowering - Bear's Breeches	Exotic
16	Ajuga reptans 'Catlin's Giant' – Bugleweed	Exotic
17	Arthropodium cirratum – New Zealand Rock Lily	Exotic
18	Aspidistra elatior – Cast Iron Plant	Exotic
19	Blechnum gibbum - Silver Lady	Exotic
20	Calathea Zebrina – Zebra Plant	Exotic
21	Clivia hybrid – Natal Lily	Exotic
22	Ctenanthe setosa – Grey star	Exotic
23	Hymenocallis speciose – Spider Lily	Exotic
24	Philodendron Rojo Congo – Philodendron	Exotic
25	Philodendron - Philodendron Xanadu	Exotic
26	Pittosporum tobira - Miss Muffet Pittosporum	Exotic
27	Sansevieria trifasciata – Mother in Laws Tongue	Exotic
28	Viburnum odoratissimum Emerald Lustre - Sweet Viburnum	Exotic

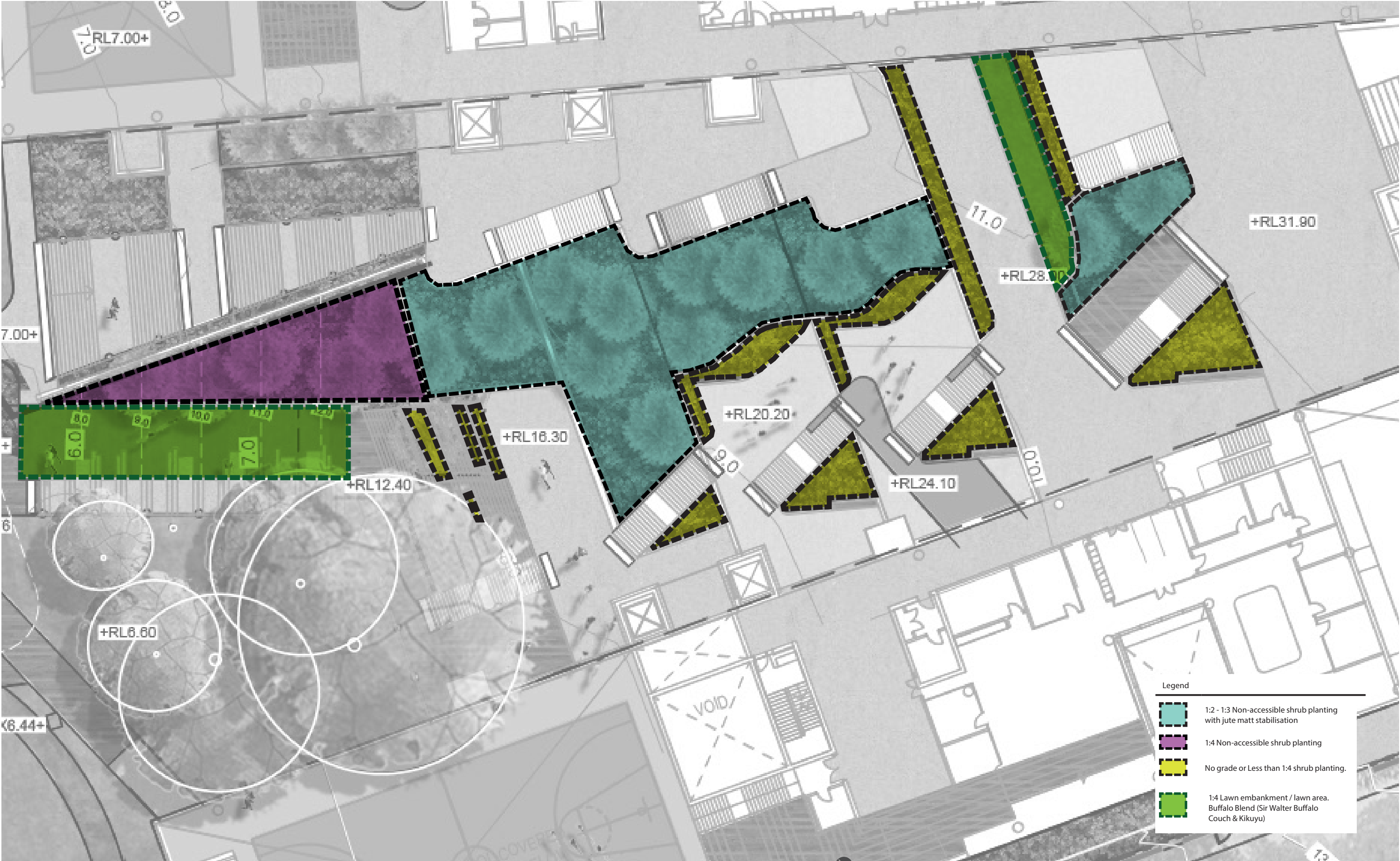
GROUNDCOVERS & CLIMBERS

Wall covers & cascading edge planting		
Code	Botanic name - Common name	Origin
29	Camellia sasanqua - Marge Miller Camellia	Exotic
30	Carpobrotus glaucescens – Pig Face	Native
31	Dichondra repens – Kidney Weed	Native
32	Dichondra argentea - Silver Falls	Exotic
33	Euryops pectinatus Little Sunray - Euryops	Exotic
34	Ficus pumila – Climbing Fig	Exotic
35	Gardenia augusta radicans - Rock Gardenia	Exotic
36	Grevillea obtusifolia gin gin gem – Grevillea	Native
37	Juniperus conferta Blue Pacific - Shore juniper	Exotic
38	Myoporum parvifolium – Dwarf Native Myrtle	Native
39	Pachysandra terminalis – Japanese Pachysandra	Exotic
40	Trachelospermum asiaticum – Asiatic Jasmine	Exotic
41	Trachelospermum jasminoides – Chinese Star Jasmine	Exotic
42	Viola hederacea – Native Violet	Native
43	Viola odorata – English Violet	Exotic

TREES

Central Landscape		
Code	Botanic name - Common name	Origin
44	Corymbia citriodora – Eucalyptus Baby Citro	Native
45	Corymbia citriodora 'scentuous' – Dwarf Lemon Scented Gum	Native
46	Eucalyptus haemastoma dwarf – Scribbly Gum	Native
47	Eucalyptus leucoxylon– 'Euky Dwarf' / Dwarf Gum Tree	Native
Under Cover / Heavy Shade		
48	Ficus longifolia – Narrow Leaf Fig	Exotic
49	Hymenosporum flavum – Native Frangipani	Native
50	Tristania laurina – Water Gum	Native

CENTRAL TERRACE LANDSCAPE GRADING, MAINTENANCE AND PLANTING STRATEGY



SLOPE STABILISATION JUTE MATTING

The planted slopes of the central spine have been designed so that the grades are no steeper than 1:2.5. These areas are not accessible to students however are accessible to maintenance staff via locked gates.

To ensure that planting can establish and fully stabilise the slope, we are proposing Jute Matting to the various sloped planting.

Contractors will be required to roll out the jute matting and pin it in place. Once this has been carried out, holes are cut into the material so that planting then mulching can occur.



PART C

APPENDICES

1: LANDSCAPE ARCHITECTURE DETAIL PLANS

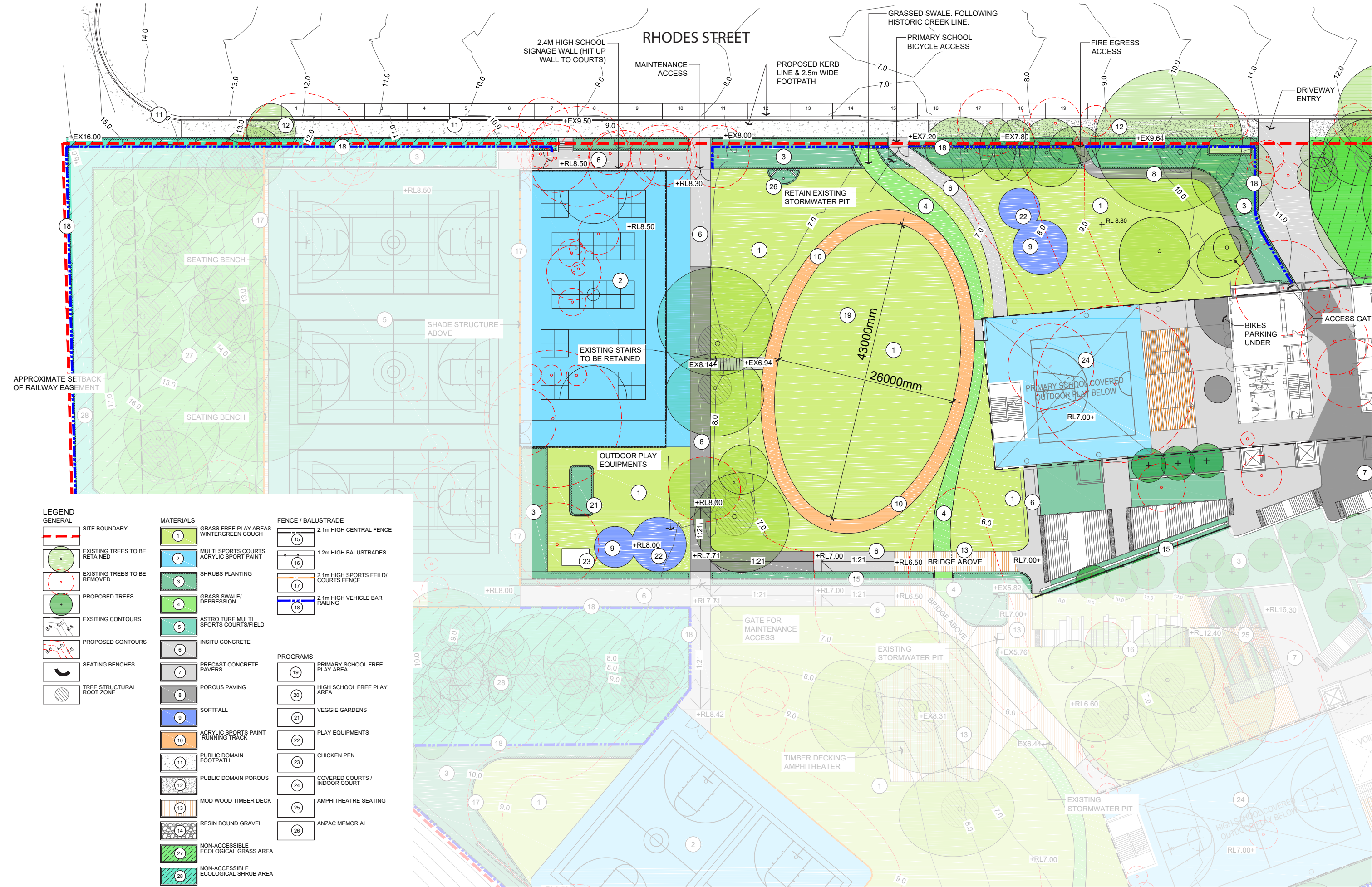




REV	DESCRIPTION	DWN	CHK	DATE
6	FOR SSDA	GA	MK	21.01.2020
5	FOR SSDA	JT	MK	30.09.19
4	FOR SSDA	JT	DM	13.06.19
3	FOR SSDA	JT	DM	06.06.19
2	FOR SSDA	JT	DM	30.04.19
1	FOR SSDA	JT	DM	18.04.19

Copyright by Urbis Pty Ltd. This drawing or parts thereof may not be reproduced for any purpose or used for another project without the consent of Urbis other than reproduction for the purposes of actual ordering, supply, installation or construction. This drawing must be read in conjunction with all relevant contracts, schedules, specifications, drawings and any other issued written instructions. Do not scale from drawings. Written figured dimensions take preference to scaled dimension and must be verified on site before proceeding with any work. All discrepancies must be referred to the superintendent for a written decision prior to ordering, supply or installation. Urbis must be notified in writing of any discrepancies.

PLOT STYLE: MEADOWBANK.CTB
 PAGE SETUP: —
 PLOTTED BY: GEORGIA ARNDOWN
 PLOT DATE: 21/01/2020
 PATH: J:\National Design\01 CLIENTS\Woods Bagot\ND2043 Meadowbank College\04 Design\4_2 CAD\ND2043_F1_Overset.dwg



MEADOWBANK EDUCATION PRECINCT SCHOOLS

2 RHODES STREET, MEADOWBANK

Tower 2, Level 23, Darling Park, 201 Sussex Street | Sydney NSW 2000 Australia | +61 2 8233 9900 | URBIS Pty Ltd | ABN 50 105 256 228

KEY PLAN

REV	DESCRIPTION	DWN	CHK	DATE	PROJECT DIRECTOR:MK
6	FOR SSDA	GA	MK	21.01.2020	
5	FOR SSDA	JT	MK	30.09.19	
4	FOR SSDA	JT	DM	13.06.19	
3	FOR SSDA	DM	DM	06.06.19	
2	FOR SSDA	JT	DM	30.04.19	
1	FOR SSDA	JT	DM	18.04.19	

CLIENT
SCHOOLS INFRASTRUCTURE NSW

WOODS BAGOT

DRAWING TITLE
PRIMARY SCHOOL DETAIL WEST

ISSUE
FOR SSDA

SCALE
1:250 @ A1
1:500 @ A3
2.5 5 7.5 10 12.5m

DRAWING NO.
MB-UR-LA-25011 6

PROJECT NO.
ND2043

NORTH

REVISION

PLOT STYLE MEADOWBANK.CTB
 PLOTTED BY: GEORGIA ARDOWIN
 PLOT DATE: 21/01/2020
 PATH: J:\National Design\01 CLIENTS\Woods Bagot\ND2013 Meadowbank College\04 Design\4.2 CAD\ND2013_F1_Overset GL.dwg



LEGEND

GENERAL

- SITE BOUNDARY
- EXISTING TREES TO BE RETAINED
- EXISTING TREES TO BE REMOVED
- PROPOSED TREES
- EXISTING CONTOURS
- PROPOSED CONTOURS
- SEATING BENCHES
- TREE STRUCTURAL ROOT ZONE

PROGRAMS

- PRIMARY SCHOOL FREE PLAY AREA
- HIGH SCHOOL FREE PLAY AREA
- VEGGIE GARDENS
- PLAY EQUIPMENTS
- CHICKEN PEN
- COVERED COURTS / INDOOR COURT
- AMPHITHEATRE SEATING
- ANZAC MEMORIAL

MATERIALS

- GRASS FREE PLAY AREAS WINTERGREEN COUCH
- MULTI SPORTS COURTS ACRYLIC SPORT PAINT
- SHRUBS PLANTING
- GRASS SWALE/ DEPRESSION
- ASTRO TURF MULTI SPORTS COURTS/FIELD
- INSITU CONCRETE
- PRECAST CONCRETE PAVERS
- POROUS PAVING
- SOFTFALL
- ACRYLIC SPORTS PAINT RUNNING TRACK
- PUBLIC DOMAIN FOOTPATH
- PUBLIC DOMAIN POROUS
- MOD WOOD TIMBER DECK
- RESIN BOUND GRAVEL
- NON-ACCESSIBLE ECOLOGICAL GRASS AREA
- NON-ACCESSIBLE ECOLOGICAL SHRUB AREA

FENCE / BALUSTRADE

- 2.1m HIGH CENTRAL FENCE
- 1.2m HIGH BALUSTRADES
- 2.1m HIGH SPORTS FIELD/COURTS FENCE
- 2.1m HIGH VEHICLE BAR RAILING



MEADOWBANK EDUCATION PRECINCT SCHOOLS
2 RHODES STREET, MEADOWBANK

Tower 2, Level 23, Darling Park, 201 Sussex Street | Sydney NSW 2000 Australia | +61 2 8233 9900 | URBIS Pty Ltd | ABN 50 105 256 228

KEY PLAN

REV	DESCRIPTION	DWN	CHK	DATE	PROJECT DIRECTOR:MK
5	FOR SSDA	GA	MK	21.01.2020	
4	FOR SSDA	JT	MK	30.09.19	
3	FOR SSDA	DM	DM	06.06.19	
2	FOR SSDA	JT	DM	30.04.19	
1	FOR SSDA	JT	DM	18.04.19	

CLIENT
SCHOOLS INFRASTRUCTURE NSW

WOODS BAGOT

DRAWING TITLE
PRIMARY SCHOOL DETAIL EAST

ISSUE
FOR SSDA

SCALE
1:250 @ A1 1:500 @ A3
2.5 5 7.5 10 12.5m

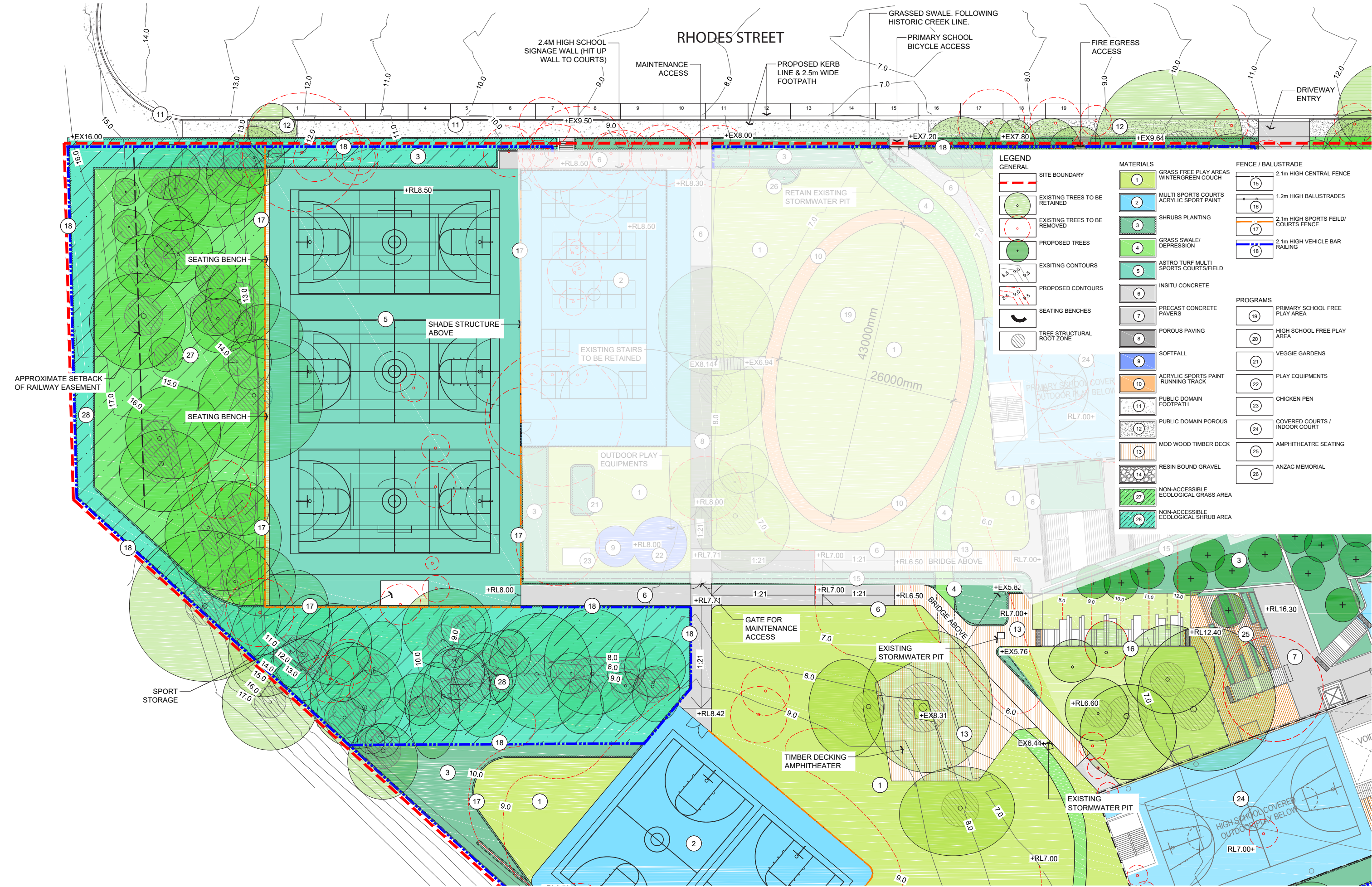
DRAWING NO.
MB-UR-LA-25012

PROJECT NO.
ND2043

NORTH

REVISION

PLOT STYLE: MEADOWBANK.CTB
 PAGE SETUP: —
 PLOTTED BY: GEORGIA ANDOVIN
 PLOT DATE: 21/01/2020
 PATH: J:\National Design\01 CLIENTS\Woods Bagot\ND2043 Meadowbank College\04 Design\4.2 CAD\ND2043_F1_Overall GL.dwg



MEADOWBANK EDUCATION PRECINCT SCHOOLS
2 RHODES STREET, MEADOWBANK

Tower 2, Level 23, Darling Park, 201 Sussex Street | Sydney NSW 2000 Australia | +61 2 8233 9900 | URBIS Pty Ltd | ABN 50 105 256 228

KEY PLAN

REV	DESCRIPTION	DWN	CHK	DATE	PROJECT DIRECTOR:MK
6	FOR SSDA	GA	MK	21.01.2020	
5	FOR SSDA	JT	MK	30.09.19	
4	FOR SSDA	JT	DM	13.06.19	
3	FOR SSDA	DM	DM	06.06.19	
2	FOR SSDA	JT	DM	30.04.19	
1	FOR SSDA	JT	DM	18.04.19	

CLIENT
SCHOOLS INFRASTRUCTURE NSW

WOODS BAGOT

DRAWING TITLE
HIGH SCHOOL DETAIL NORTH

ISSUE
FOR SSDA

SCALE
1:250 @ A1 1:500 @ A3
2.5 5 7.5 10 12.5m

DRAWING NO.
MB-UR-LA-25013 6

PROJECT NO.
ND2043

NORTH

REVISION



PROJECT

MEADOWBANK EDUCATION PRECINCT SCHOOLS

2 RHODES STREET, MEADOWBANK

Tower 2, Level 23, Darling Park, 201 Sussex Street | Sydney NSW 2000 Australia | +61 2 8233 9900 | URBIS Pty Ltd | ABN 50 105 256 228

KEY PLAN

REV	DESCRIPTION	DWN	CHK	DATE	PROJECT DIRECTOR: MK
5	FOR SSDA	GA	MK	21.01.2020	
4	FOR SSDA	JT	MK	30.09.19	
3	FOR SSDA	JT	DM	06.06.19	
2	FOR SSDA	JT	DM	30.04.19	
1	FOR SSDA	JT	DM	18.04.19	

DISCLAIMER

Copyright by Urbis Pty Ltd. This drawing or parts thereof may not be reproduced for any purpose or used for another project without the consent of Urbis other than reproduction for the purposes of actual ordering, supply, installation or construction. This drawing must be read in conjunction with all relevant contracts, schedules, specifications, drawings and any other issued written instructions. Do not scale from drawings. Written figured dimensions take preference to scaled dimension and must be verified on site before proceeding with any work. All discrepancies must be referred to the superintendent for a written decision prior to ordering, supply or installation. Urbis must be notified in writing of any discrepancies.

CLIENT
SCHOOLS INFRASTRUCTURE NSW

WOODS BAGOT

DRAWING TITLE

HIGH SCHOOL DETAIL SOUTH

ISSUE

FOR SSDA

SCALE

1:250 @ A1
2.5 5 7.5 10 12.5 m

DRAWING NO.

MB-UR-LA-25014 5

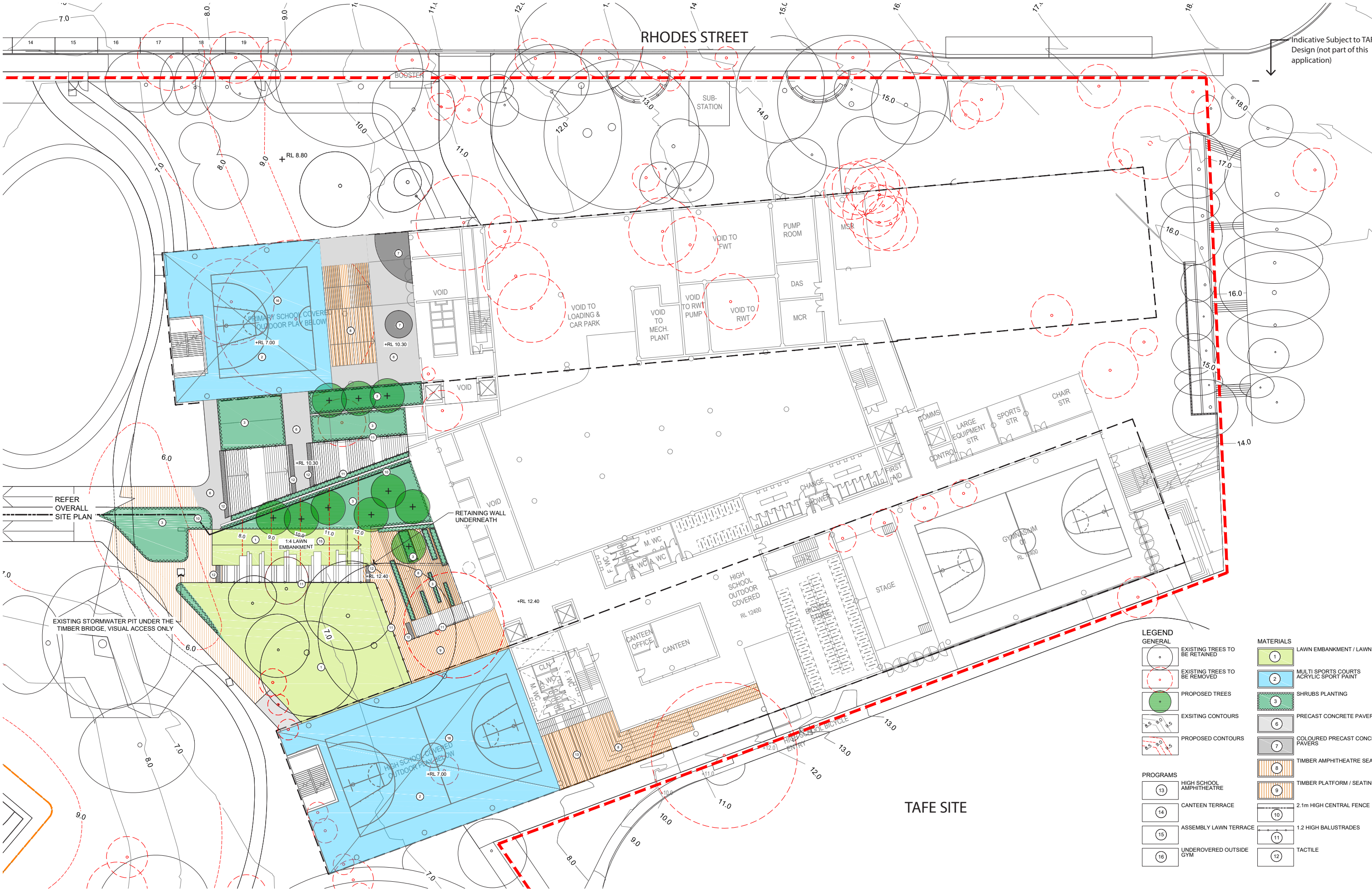
PROJECT NO.

ND2043

NORTH



REVISION



LEGEND

GENERAL

- EXISTING TREES TO BE RETAINED
- EXISTING TREES TO BE REMOVED
- PROPOSED TREES
- EXISTING CONTOURS
- PROPOSED CONTOURS

PROGRAMS

- 13 HIGH SCHOOL AMPHITHEATRE
- 14 CANTEN TERRACE
- 15 ASSEMBLY LAWN TERRACE
- 16 UNDERCOVERED OUTSIDE GYM

MATERIALS

- 1 LAWN EMBANKMENT / LAWN AREA
- 2 MULTI SPORTS COURTS ACRYLIC SPORT PAINT
- 3 SHRUBS PLANTING
- 6 PRECAST CONCRETE PAVERS
- 7 COLOURED PRECAST CONCRETE PAVERS
- 8 TIMBER AMPHITHEATRE SEATING
- 9 TIMBER PLATFORM / SEATING
- 10 2.1m HIGH CENTRAL FENCE
- 11 1.2 HIGH BALUSTRADES
- 12 TACTILE

PROJECT

MEADOWBANK EDUCATION PRECINCT SCHOOLS
2 RHODES STREET, MEADOWBANK

KEY PLAN

REV	DESCRIPTION	DWN	CHK	DATE
5	FOR SSDA	GA	MK	21.01.2020
4	FOR SSDA	JT	MK	30.09.19
3	FOR SSDA	JT	DM	06.06.19
2	FOR SSDA	JT	DM	30.04.19
1	FOR SSDA	JT	DM	18.04.19

DISCLAIMER

Copyright by Urbis Pty Ltd. This drawing or parts thereof may not be reproduced for any purpose or used for another project without the consent of Urbis other than reproduction for the purposes of actual ordering, supply, installation or construction. This drawing must be read in conjunction with all relevant contracts, schedules, specifications, drawings and any other issued written instructions. Do not scale from drawings. Written figured dimensions take preference to scaled dimension and must be verified on site before proceeding with any work. All discrepancies must be referred to the superintendent for a written decision prior to ordering, supply or installation. Urbis must be notified in writing of any discrepancies.

PROJECT DIRECTOR: MK

CLIENT

SCHOOLS INFRASTRUCTURE NSW

WOODS BAGOT

DRAWING TITLE

CENTRAL TERRACE LANDSCAPE PLANS - LG

ISSUE FOR SSDA

SCALE

1:250 @ A1

1:500 @ A3

2.5 5 7.5 10 12.5m

PROJECT NO. ND2043

NORTH

REVISION

MB-UR-LA-25000 5





LEGEND

GENERAL

EXISTING TREES TO BE REMOVED

PROPOSED TREES

PROGRAMS

PRIMARY SCHOOL TERRACE

HIGH SCHOOL LEARNING / PLAY TERRACE

MATERIALS

SHRUBS PLANTING

PRECAST CONCRETE PAVERS

COLOURED PRECAST CONCRETE PAVERS

TIMBER PLATFORM / SEATING

1.2 HIGH BALUSTRADES

TACTILE



MEADOWBANK EDUCATION PRECINCT SCHOOLS
2 RHODES STREET, MEADOWBANK

Tower 2, Level 23, Darling Park, 201 Sussex Street | Sydney NSW 2000 Australia | +61 2 8233 9900 | URBIS Pty Ltd | ABN 50 105 256 228

KEY PLAN

REV	DESCRIPTION	DWN	CHK	DATE
5	FOR SSDA	GA	MK	21.01.2020
4	FOR SSDA	JT	MK	30.09.18
3	FOR SSDA	JT	DM	06.06.19
2	FOR SSDA	JT	DM	30.04.19
1	FOR SSDA	JT	DM	18.04.19

DISCLAIMER
Copyright by Urbis Pty Ltd. This drawing or parts thereof may not be reproduced for any purpose or used for another project without the consent of Urbis other than reproduction for the purposes of actual ordering, supply, installation or construction. This drawing must be read in conjunction with all relevant contracts, schedules, specifications, drawings and any other issued written instructions. Do not scale from drawings. Written figured dimensions take preference to scaled dimension and must be verified on site before proceeding with any work. All discrepancies must be referred to the superintendent for a written decision prior to ordering, supply or installation. Urbis must be notified in writing of any discrepancies.

PROJECT DIRECTOR: MK

CLIENT
SCHOOLS INFRASTRUCTURE NSW

WOODS BAGOT

DRAWING TITLE
CENTRAL TERRACE LANDSCAPE PLANS - GL

ISSUE
FOR SSDA

SCALE
1:250 @ A1
1:500 @ A3
2.5 5 7.5 10 12.5m

DRAWING NO.
MB-UR-LA-25010

PROJECT NO.
ND2043

NORTH

REVISION

5



LEGEND

GENERAL

- EXISTING TREES TO BE REMOVED
- PROPOSED TREES

PROGRAMS

- PRIMARY SCHOOL TERRACE
- HIGH SCHOOL LEARNING / PLAY TERRACE

MATERIALS

- SHRUBS PLANTING
- PRECAST CONCRETE PAVERS
- COLOURED PRECAST CONCRETE PAVERS
- TIMBER PLATFORM / SEATING
- COLOURED CONCRETE
- 1.2 HIGH BALUSTRADES
- TACTILE

PATH: J:\National Design\01 CLIENTS\Woods Bagot\ND2043 Meadowbank College\04 Design\1.2 CAD\ND2043_F1_LV1.dwg

PLOTTED BY: GEORGIA ASHCOWN

PAGE SETUP: ----

PLOT STYLE: MEADOWBANK.CTB

PLOT DATE: 16/01/2020



PROJECT

MEADOWBANK SCHOOLS
2 RHODES STREET, MEADOWBANK

Tower 2, Level 23, Darling Park, 201 Sussex Street | Sydney NSW 2000 Australia | +61 2 8233 9900 | URBIS Pty Ltd | ABN 50 105 256 228

KEY PLAN

REV	DESCRIPTION	DWN	CHK	DATE
5	FOR SSDA	GA	MK	21.01.2020
4	FOR SSDA	JT	MK	30.09.19
3	FOR SSDA	JT	DM	29.05.19
2	FOR SSDA	JT	DM	30.04.19
1	FOR SSDA	JT	DM	18.04.19

DISCLAIMER
Copyright by Urbis Pty Ltd. This drawing or parts thereof may not be reproduced for any purpose or used for another project without the consent of Urbis other than reproduction for the purposes of actual ordering, supply, installation or construction. This drawing must be read in conjunction with all relevant contracts, schedules, specifications, drawings and any other issued written instructions. Do not scale from drawings. Written figured dimensions take preference to scaled dimension and must be verified on site before proceeding with any work. All discrepancies must be referred to the superintendent for a written decision prior to ordering, supply or installation. Urbis must be notified in writing of any discrepancies.

PROJECT DIRECTOR: MK

CLIENT
SCHOOLS INFRASTRUCTURE NSW

WOODS BAGOT

DRAWING TITLE
CENTRAL TERRACE LANDSCAPE PLANS - LV1

ISSUE
FOR SSDA

SCALE
1:250 @ A1
2.5 5 7.5 10 12.5m

DRAWING NO.
MB-UR-LA-25100

PROJECT NO.
ND2043

NORTH

REVISION

5

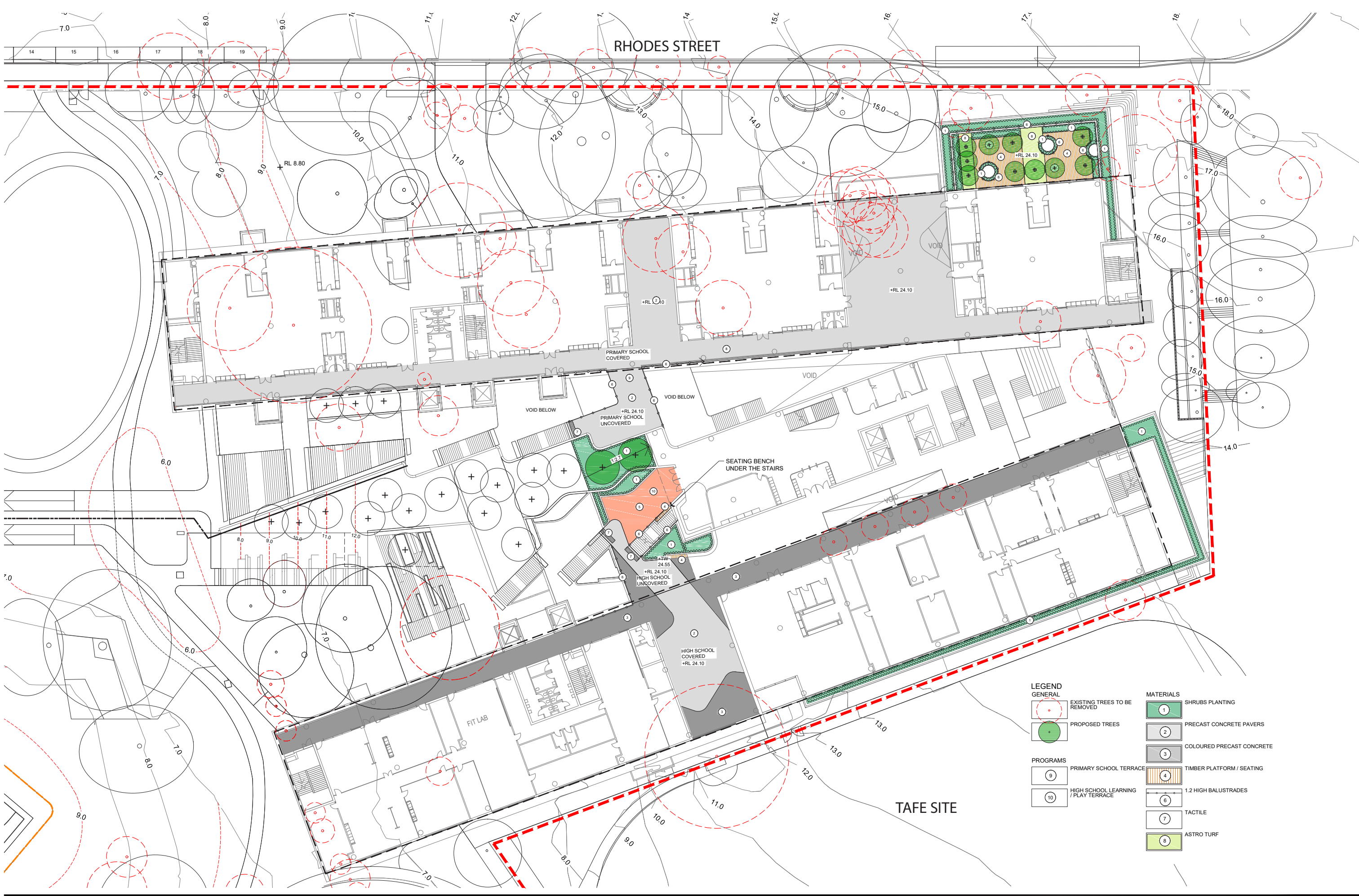
PLOT STYLE: MEADOWBANK.CTB

PAGE SETUP: ---

PLOTTED BY: GEORGIA ABRICOW

PLOT DATE: 16/07/2020

PATH: J:\National Design\01 CLIENTS\Woods Bagot\ND2043 Meadowbank College\04 Design\4.2 CAD\ND2043_F1_LV2.dwg



PROJECT

MEADOWBANK EDUCATION PRECINCT SCHOOLS

2 RHODES STREET, MEADOWBANK

Tower 2, Level 23, Darling Park, 201 Sussex Street | Sydney NSW 2000 Australia | +61 2 8233 9900 | URBIS Pty Ltd | ABN 50 105 256 228

KEY PLAN

REV	DESCRIPTION	DWN	CHK	DATE
5	FOR SSDA	GA	MK	21.01.2020
4	FOR SSDA	JT	MK	30.09.19
3	FOR SSDA	JT	DM	29.05.19
2	FOR SSDA	JT	DM	30.04.19
1	FOR SSDA	JT	DM	18.04.19

DISCLAIMER
Copyright by Urbis Pty Ltd. This drawing or parts thereof may not be reproduced for any purpose or used for another project without the consent of Urbis other than reproduction for the purposes of actual ordering, supply, installation or construction. This drawing must be read in conjunction with all relevant contracts, schedules, specifications, drawings and any other issued written instructions. Do not scale from drawings. Written figured dimensions take preference to scaled dimension and must be verified on site before proceeding with any work. All discrepancies must be referred to the superintendent for a written decision prior to ordering, supply or installation. Urbis must be notified in writing of any discrepancies.

PROJECT DIRECTOR: MK

CLIENT
SCHOOLS INFRASTRUCTURE NSW

WOODS BAGOT

DRAWING TITLE
CENTRAL TERRACE LANDSCAPE PLANS - LV2

PROJECT NO.
ND2043

NORTH

REVISION

ISSUE
FOR SSDA

SCALE
1:250 @ A1
1:500 @ A3
2.5 5 7.5 10 12.5m

DRAWING NO.
MB-UR-LA-25200

5



LEGEND

GENERAL

EXISTING TREES TO BE REMOVED

PROPOSED TREES

PROGRAMS

HIGH SCHOOL LEARNING / PLAY TERRACE

MATERIALS

SHRUBS PLANTING

PRECAST CONCRETE PAVERS

COLOURED PRECAST CONCRETE PAVERS

TIMBER PLATFORM / SEATING

1.2 HIGH BALUSTRADES

TACTILE

TURF

PROJECT

KEY PLAN

URBIS

MEADOWBANK EDUCATION PRECINCT SCHOOLS
2 RHODES STREET, MEADOWBANK

Tower 2, Level 23, Darling Park, 201 Sussex Street | Sydney NSW 2000 Australia | +61 2 8233 9900 | URBIS Pty Ltd | ABN 50 105 256 228

REV	DESCRIPTION	DWN	CHK	DATE	PROJECT DIRECTOR:MK
5	FOR SSDA	GA	MK	21.01.2020	
4	FOR SSDA	JT	MK	30.09.19	
3	FOR SSDA	JT	DM	29.05.19	
2	FOR SSDA	JT	DM	30.04.19	
1	FOR SSDA	JT	DM	18.04.19	

CLIENT
SCHOOLS INFRASTRUCTURE NSW

WOODS BAGOT

DRAWING TITLE
CENTRAL TERRACE LANDSCAPE PLANS - LV3

ISSUE
FOR SSDA

SCALE
1:250 @ A1
1:500 @ A3

DRAWING NO.
MB-UR-LA-25300

PROJECT NO.
ND2043

REVISION

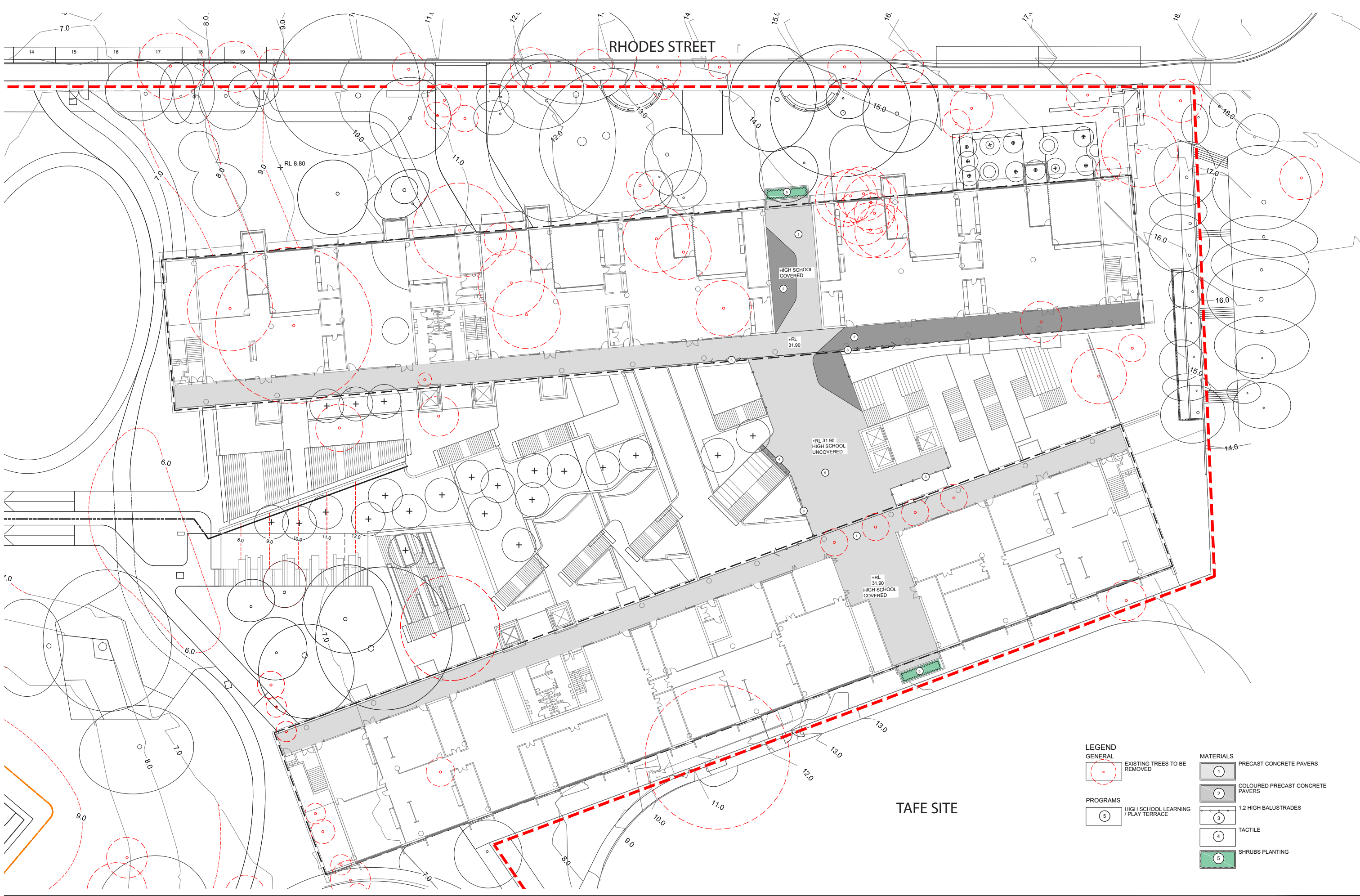
PLOT STYLE: MEADOWBANK.CTB

PAGE SETUP: ---

PLOTTED BY: GEORGIA ABRIDOWN

PLOT DATE: 16/01/2020

PATH: J:\National Design\01 CLIENTS\Woods Bagot\ND2043 Meadowbank College\04 Design\4.2 CAD\ND2043_F1_LV4.dwg



PROJECT

MEADOWBANK EDUCATION PRECINCT SCHOOLS

2 RHODES STREET, MEADOWBANK

Tower 2, Level 23, Darling Park, 201 Sussex Street | Sydney NSW 2000 Australia | +61 2 8233 9900 | URBIS Pty Ltd | ABN 50 105 256 228

KEY PLAN

REV	DESCRIPTION	DWN	CHK	DATE
5	FOR SSDA	GA	MK	21.01.2020
4	FOR SSDA	JT	MK	30.09.19
3	FOR SSDA	JT	DM	06.06.19
2	FOR SSDA	JT	DM	30.04.19
1	FOR SSDA	JT	DM	18.04.19

DISCLAIMER
Copyright by Urbis Pty Ltd. This drawing or parts thereof may not be reproduced for any purpose or used for another project without the consent of Urbis other than reproduction for the purposes of actual ordering, supply, installation or construction. This drawing must be read in conjunction with all relevant contracts, schedules, specifications, drawings and any other issued written instructions. Do not scale from drawings. Written figured dimensions take preference to scaled dimension and must be verified on site before proceeding with any work. All discrepancies must be referred to the superintendent for a written decision prior to ordering, supply or installation. Urbis must be notified in writing of any discrepancies.

PROJECT DIRECTOR: MK

CLIENT
SCHOOLS INFRASTRUCTURE NSW

WOODS BAGOT

DRAWING TITLE
CENTRAL TERRACE LANDSCAPE PLANS - LV4

ISSUE
FOR SSDA

SCALE
1:250 @ A1
1:500 @ A3

DRAWING NO.
MB-UR-LA-25400

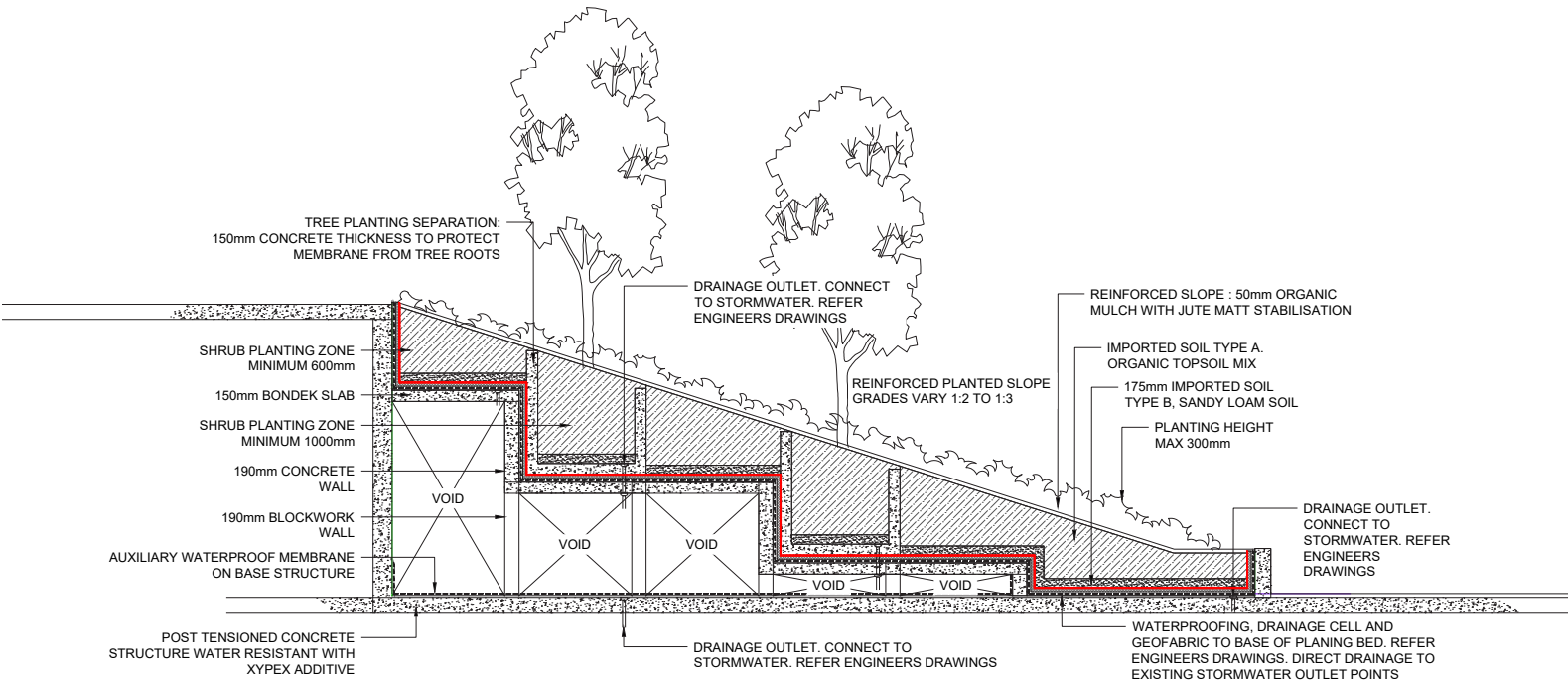
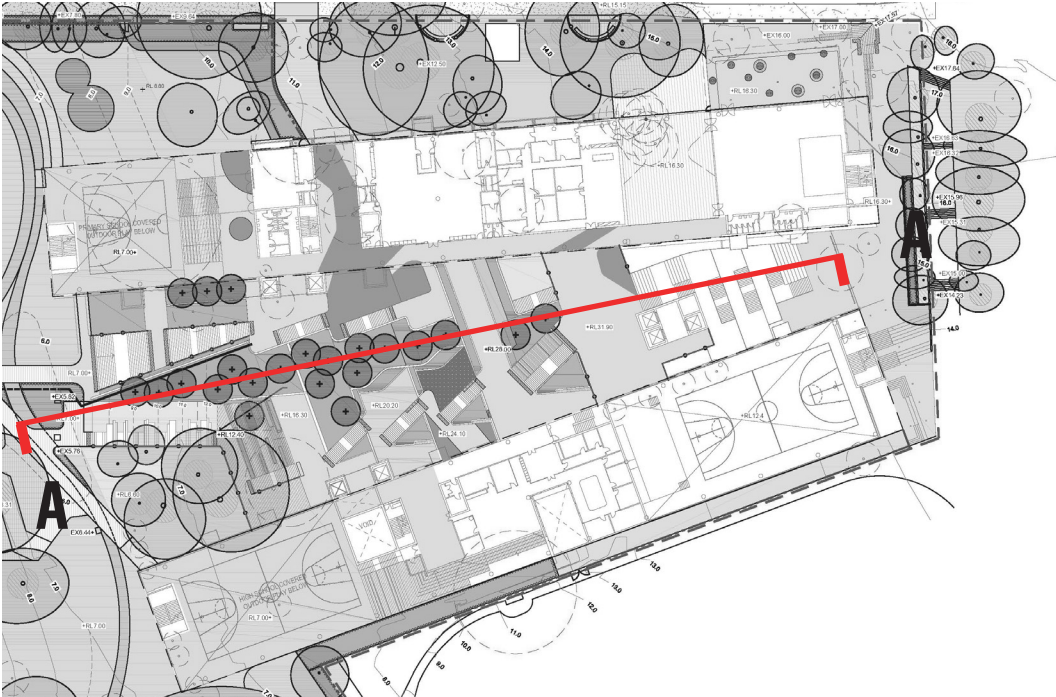
PROJECT NO.
ND2043

NORTH

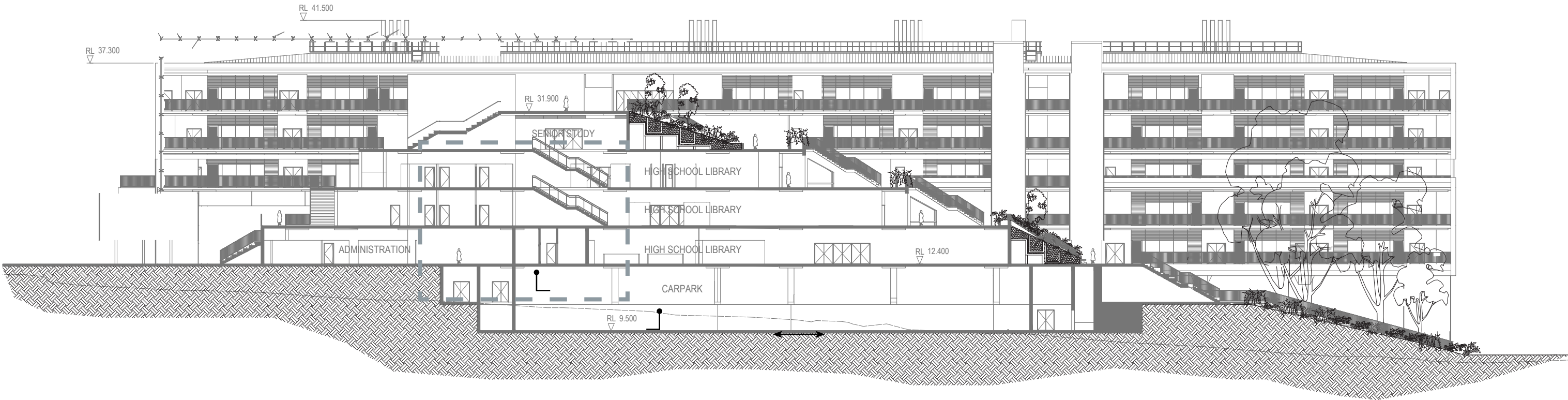
REVISION
5

LANDSCAPE SECTION AA

KEY PLAN



TYPICAL ON SLAB PLANTING
DETAIL 1:50@A1



SECTION AA 1:200@A1



PROJECT
MEADOWBANK SCHOOLS
2 RHODES STREET, MEADOWBANK

Tower 2, Level 23, Darling Park, 201 Sussex Street | Sydney NSW 2000 Australia | +61 2 8233 9900 | URBIS Pty Ltd | ABN 50 105 256 228

KEY PLAN

REV	DESCRIPTION	DWN	CHK	DATE
3	FOR SSDA	JT	DM	06.06.19
2	FOR SSDA	JT	DM	30.04.19
1	FOR SSDA	JT	DM	18.04.19

DISCLAIMER
Copyright by URBIS Pty Ltd. This drawing or parts thereof may not be reproduced for any purpose or used for another project without the consent of URBIS other than reproduction for the purposes of actual ordering, supply, installation or construction. This drawing must be read in conjunction with all relevant contracts, schedules, specifications, drawings and any other issued written instructions. Do not scale from drawings. Written figured dimensions take preference to scaled dimension and must be verified on site before proceeding with any work. All discrepancies must be referred to the superintendent for a written decision prior to ordering, supply or installation. URBIS must be notified in writing of any discrepancies.

PROJECT DIRECTOR: MK

CLIENT
SCHOOLS INFRASTRUCTURE NSW

WOODS BAGOT

DRAWING TITLE
LANDSCAPE SECTION A

ISSUE
FOR SSDA

SCALE
AS SHOWN @ A1

DRAWING NO.
L300

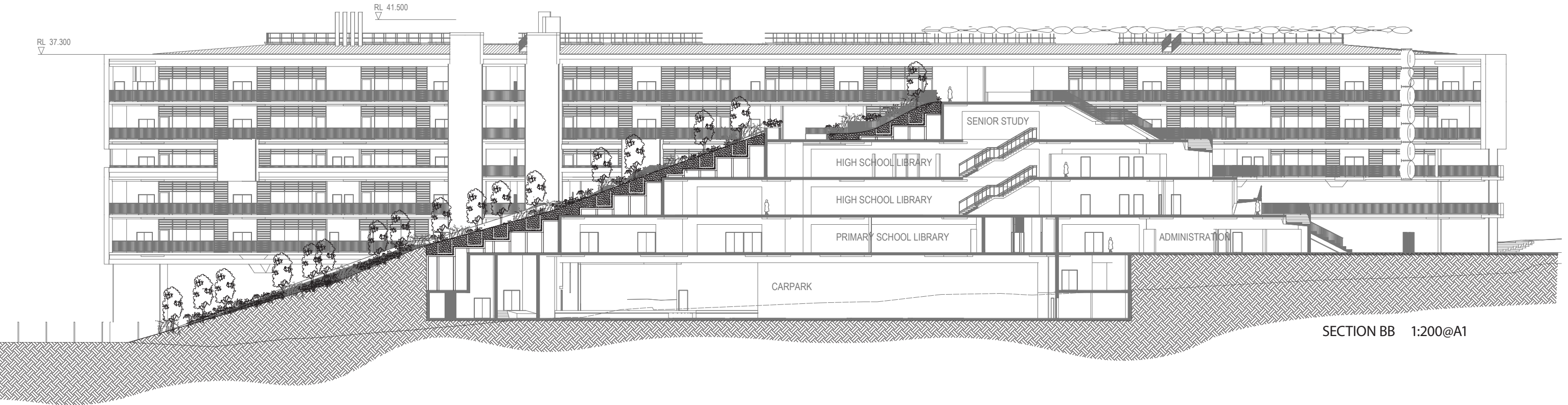
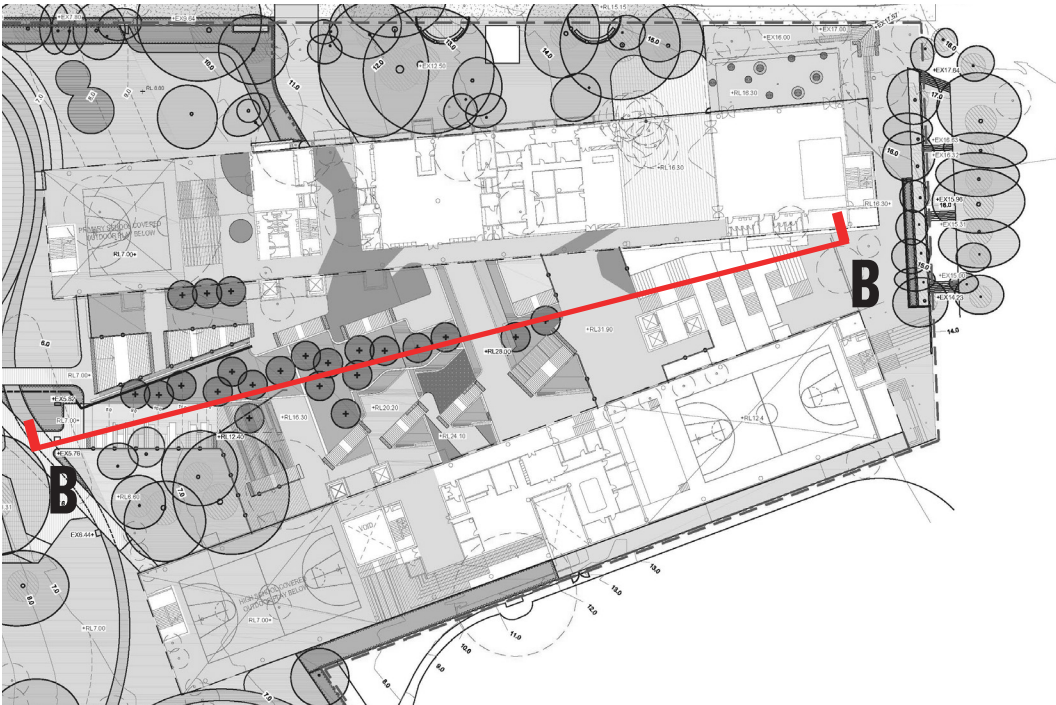
PROJECT NO.
ND2043

NORTH

REVISION
3

LANDSCAPE SECTION BB

KEY PLAN



SECTION BB 1:200@A1



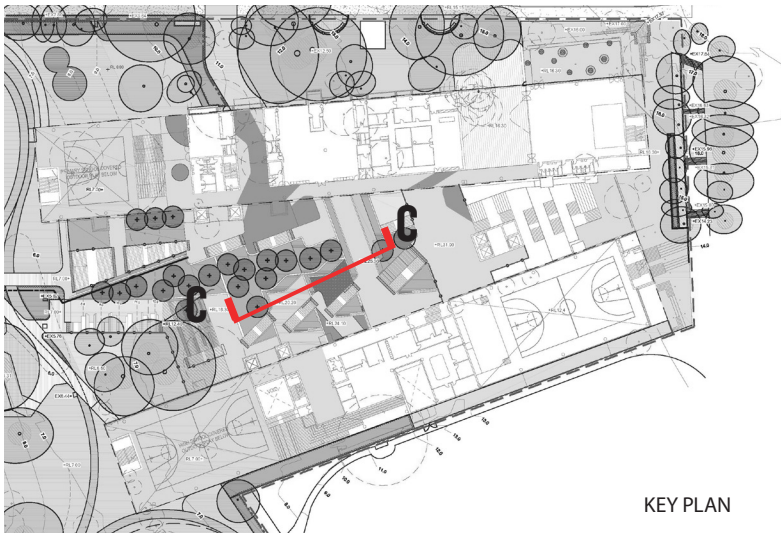
PROJECT
MEADOWBANK SCHOOLS
2 RHODES STREET, MEADOWBANK
Tower 2, Level 23, Darling Park, 201 Sussex Street | Sydney NSW 2000 Australia | +61 2 8233 9900 | URBIS Pty Ltd | ABN 50 105 256 228

KEY PLAN

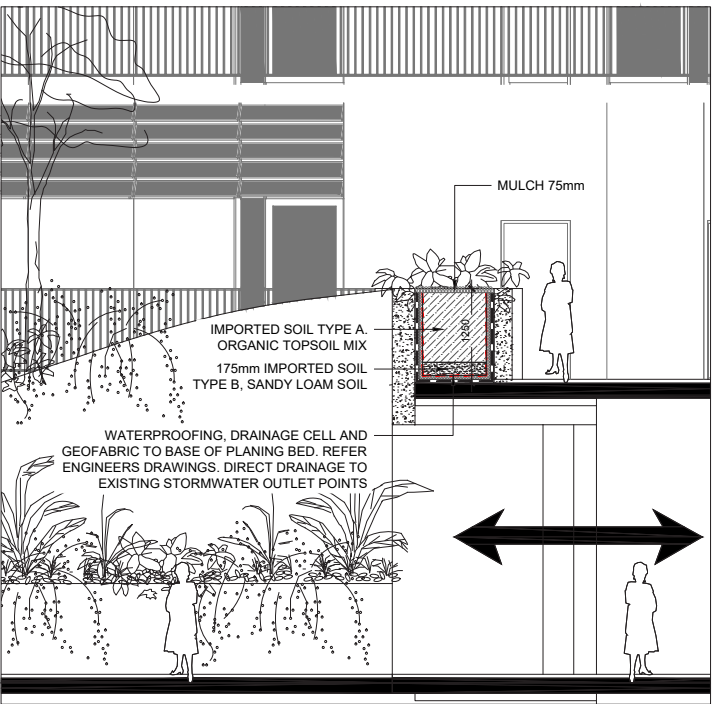
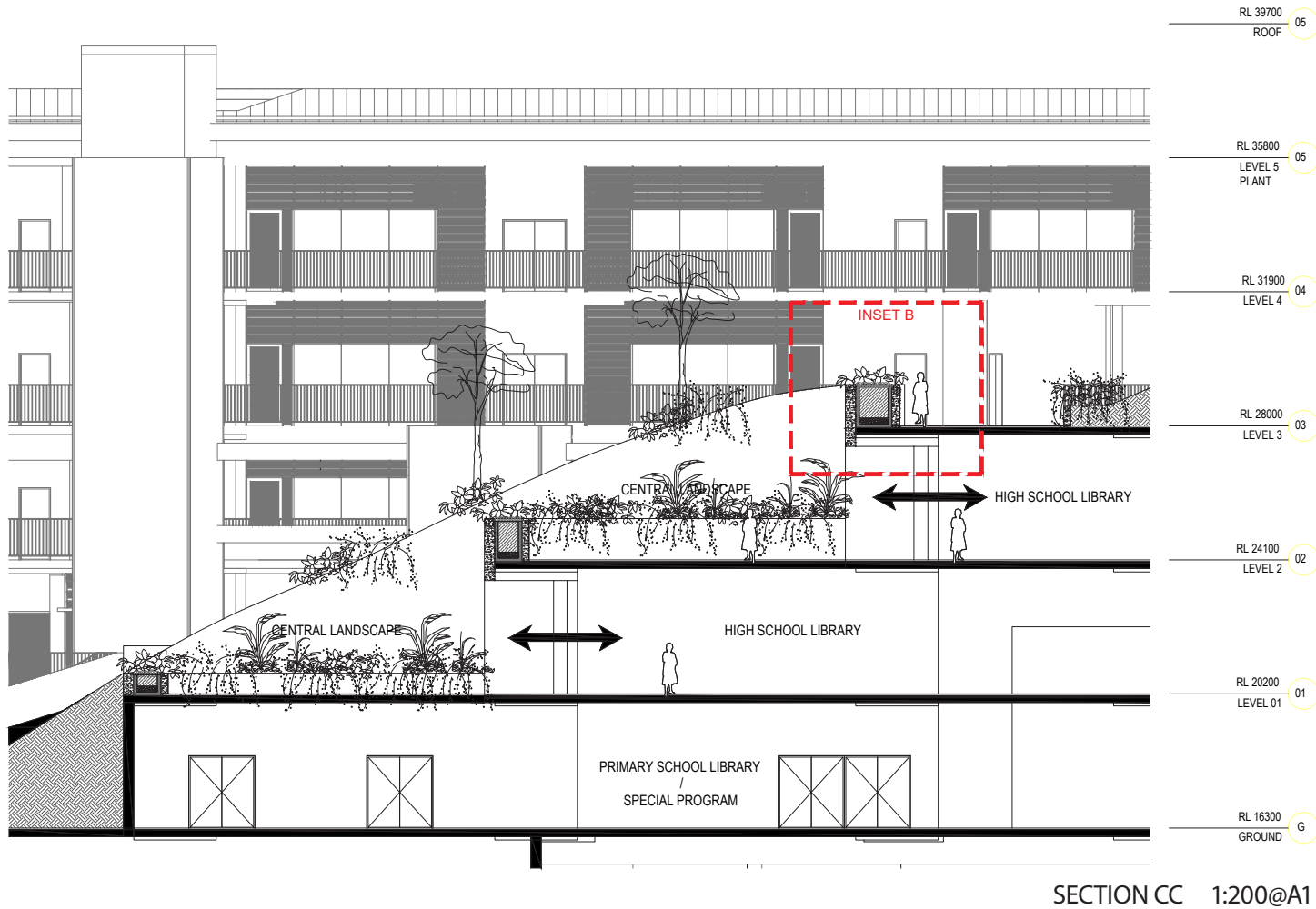
3	FOR SSDA	JT	DM	06.06.19	DISCLAIMER Copyright by URBIS Pty Ltd. This drawing or parts thereof may not be reproduced for any purpose or used for another project without the consent of URBIS other than reproduction for the purposes of actual ordering, supply, installation or construction. This drawing must be read in conjunction with all relevant contracts, schedules, specifications, drawings and any other issued written instructions. Do not scale from drawings. Written figured dimensions take preference to scaled dimension and must be verified on site before proceeding with any work. All discrepancies must be referred to the superintendent for a written decision prior to ordering, supply or installation. URBIS must be notified in writing of any discrepancies.
2	FOR SSDA	JT	DM	30.04.19	
1	FOR SSDA	JT	DM	18.04.19	
REV	DESCRIPTION	DWN	CHK	DATE	PROJECT DIRECTOR: MK

CLIENT SCHOOLS INFRASTRUCTURE NSW	ISSUE FOR SSDA	PROJECT NO. ND2043
WOODS BAGOT	SCALE AS SHOWN @ A1	NORTH
DRAWING TITLE LANDSCAPE SECTION B	DRAWING NO. L301	REVISION 3

LANDSCAPE SECTION CC



KEY PLAN



INSET B 1:50@A1

PA



PROJECT
MEADOWBANK SCHOOLS
2 RHODES STREET, MEADOWBANK

KEY PLAN

Tower 2, Level 23, Darling Park, 201 Sussex Street | Sydney NSW 2000 Australia | +61 2 8233 9900 | URBIS Pty Ltd | ABN 50 105 256 228

1	FOR SSDA	JT	DM	06.06.19
REV	DESCRIPTION	DWN	CHK	DATE

DISCLAIMER
Copyright by Urbis Pty Ltd. This drawing or parts thereof may not be reproduced for any purpose or used for another project without the consent of Urbis other than reproduction for the purposes of actual ordering, supply, installation or construction. This drawing must be read in conjunction with all relevant contracts, schedules, specifications, drawings and any other issued written instructions. Do not scale from drawings. Written figured dimensions take preference to scaled dimension and must be verified on site before proceeding with any work. All discrepancies must be referred to the superintendent for a written decision prior to ordering, supply or installation. Urbis must be notified in writing of any discrepancies.

PROJECT DIRECTOR:MK

CLIENT
SCHOOLS INFRASTRUCTURE NSW

WOODS BAGOT

DRAWING TITLE
LANDSCAPE SECTION C

ISSUE
FOR SSDA

SCALE
AS SHOWN @ A1

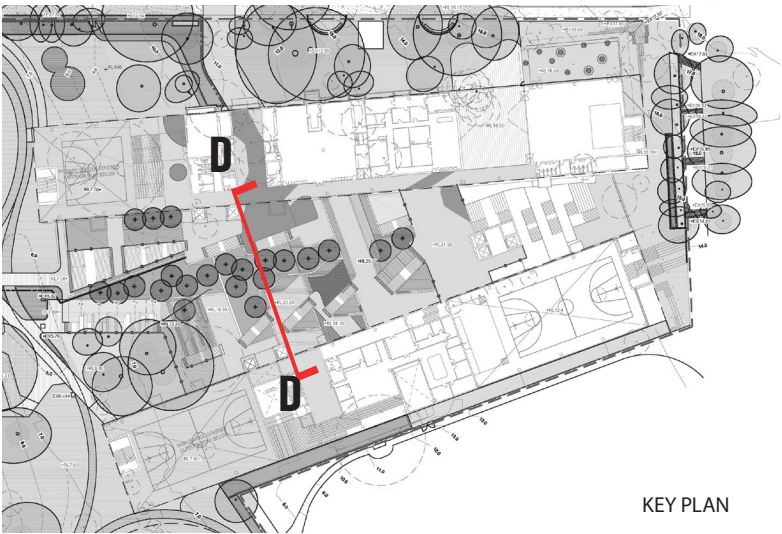
DRAWING NO.
L302

PROJECT NO.
ND2043

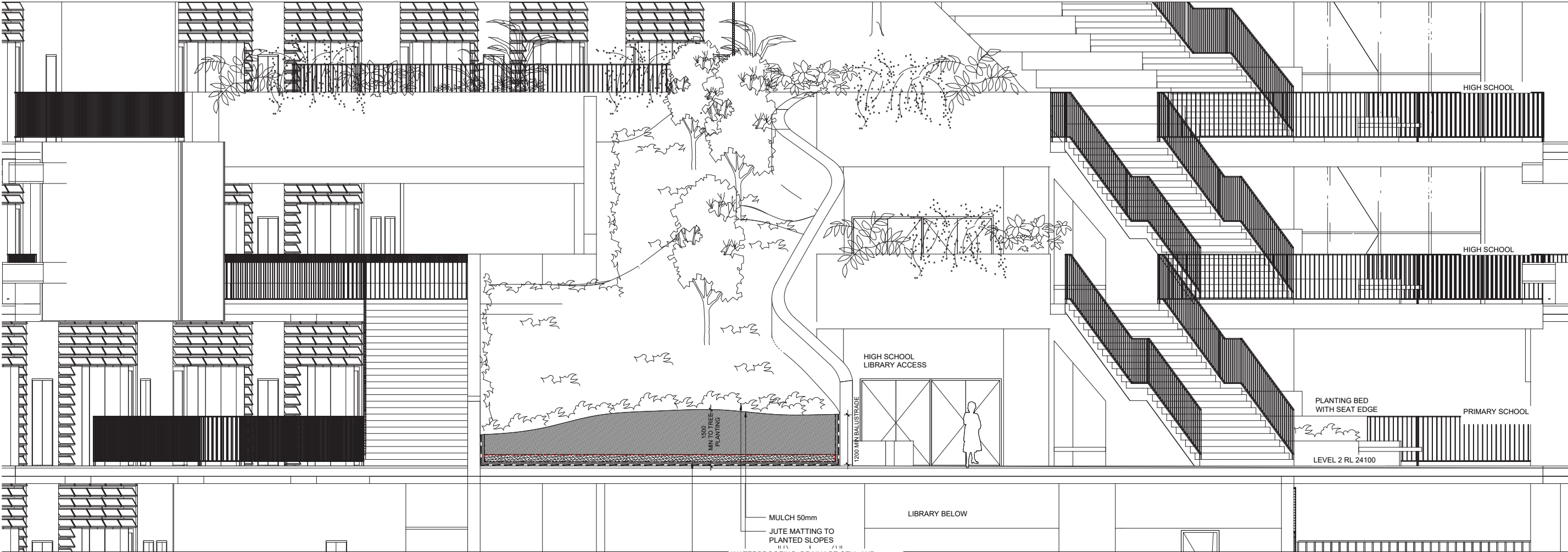
NORTH

REVISION
1

LANDSCAPE SECTION DD



KEY PLAN



SECTION CC 1:200@A1

MULCH 50mm
JUTE MATTING TO PLANTED SLOPES
WATERPROOFING, DRAINAGE CELL AND GEOFABRIC TO BASE OF PLANTING BED. REFER ENGINEERS DRAWINGS. DIRECT DRAINAGE TO EXISTING STORMWATER OUTLET POINTS

LIBRARY BELOW

LEVEL 2 RL 24100

PRIMARY SCHOOL

PLANTING BED WITH SEAT EDGE

HIGH SCHOOL

HIGH SCHOOL

PROJECT

MEADOWBANK SCHOOLS
2 RHODES STREET, MEADOWBANK

KEY PLAN

REV	DESCRIPTION	DWN	CHK	DATE
3	FOR SSDA	JT	DM	06.06.19
2	FOR SSDA	DM	DM	30.04.19
1	FOR SSDA	JT	DM	18.04.19

DISCLAIMER
Copyright by Urbis Pty Ltd. This drawing or parts thereof may not be reproduced for any purpose or used for another project without the consent of Urbis other than reproduction for the purposes of actual ordering, supply, installation or construction. This drawing must be read in conjunction with all relevant contracts, schedules, specifications, drawings and any other issued written instructions. Do not scale from drawings. Written figured dimensions take preference to scaled dimension and must be verified on site before proceeding with any work. All discrepancies must be referred to the superintendent for a written decision prior to ordering, supply or installation. Urbis must be notified in writing of any discrepancies.

PROJECT DIRECTOR:MK

CLIENT
SCHOOLS INFRASTRUCTURE NSW

WOODS BAGOT

DRAWING TITLE

LANDSCAPE SECTION D

ISSUE
FOR SSDA

SCALE

AS SHOWN @ A1

DRAWING NO.

L303

PROJECT NO.
ND2043

NORTH

REVISION

3

PROPOSED PLANTING IN CENTRAL LANDSCAPE

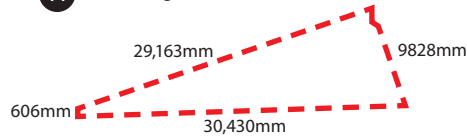
KEY PLAN



PLANTER VOLUME SCHEDULE - (To Central Landscape)

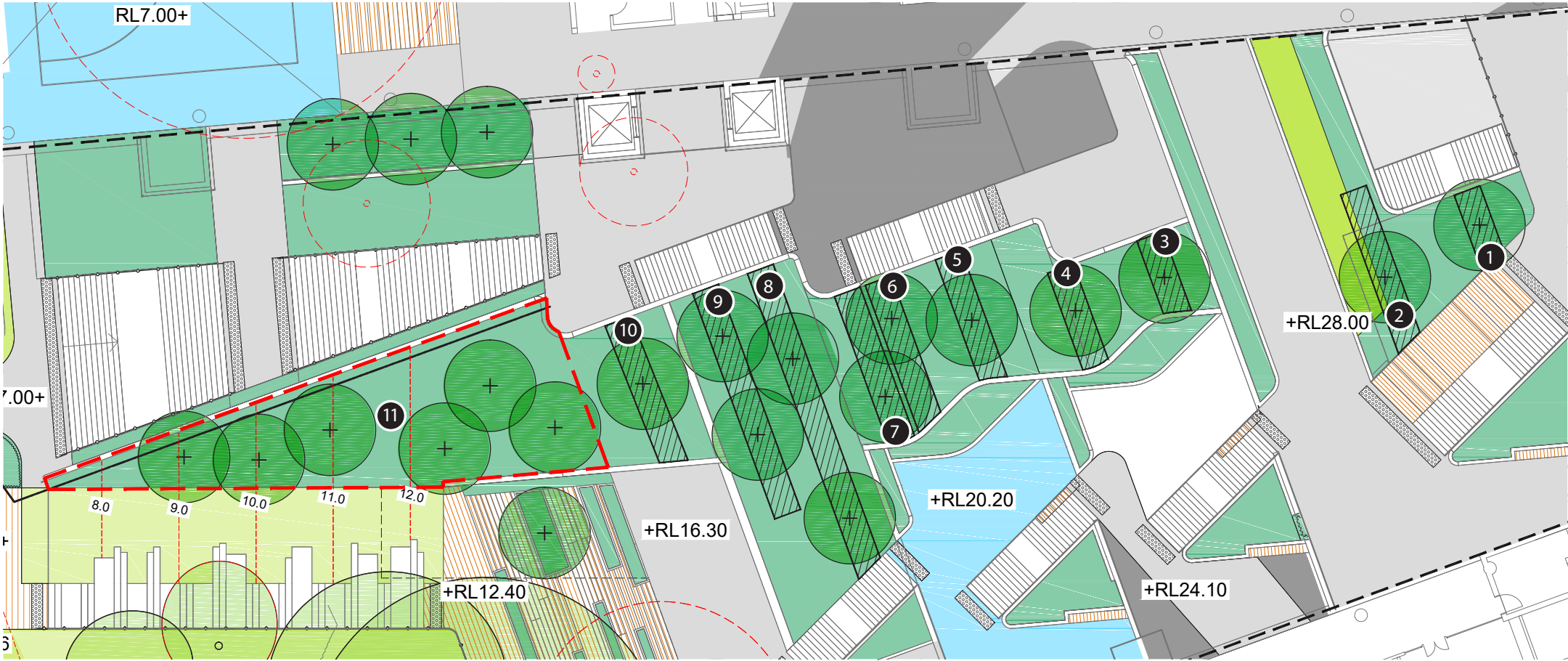
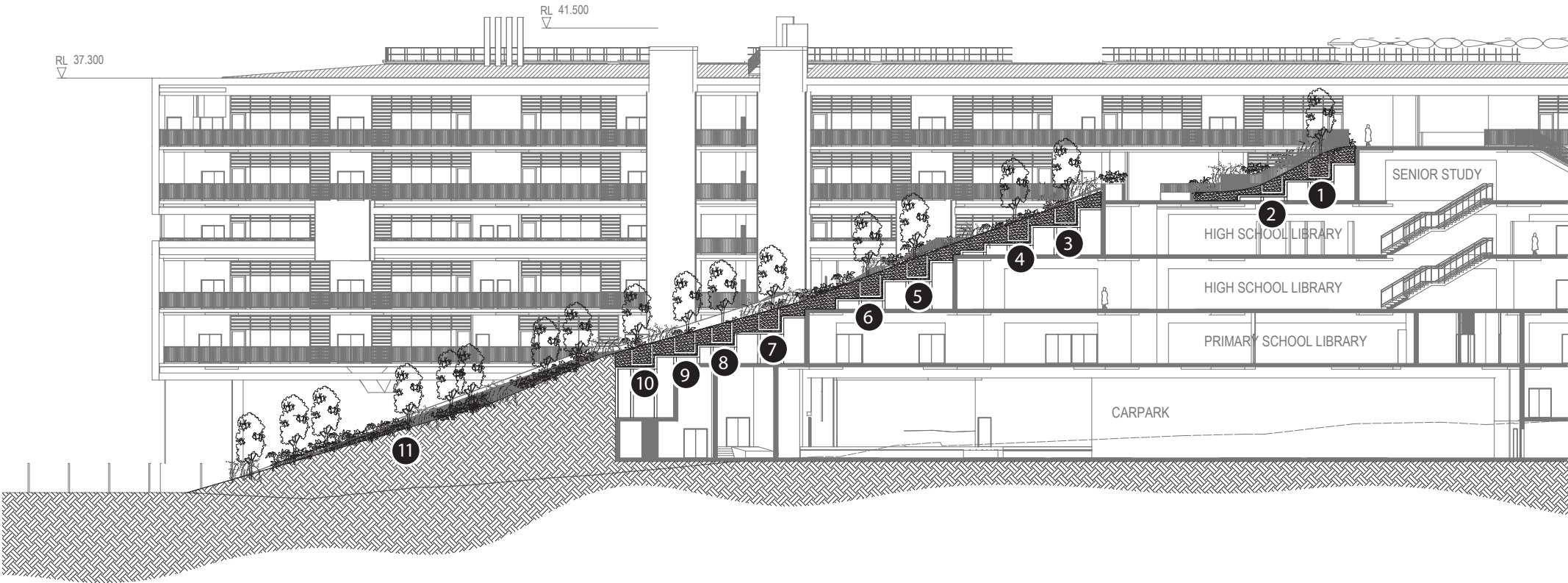
Planter Number (Refer Section + Plan)	Depth	Width	Length	Total Volume
1	1250mm	1500mm	4800mm	9m3
2	0.816mm	1500mm	9.231mm	11m3
3	1250mm	1500mm	4800mm	9m3
4	1250mm	1500mm	5619mm	10m3
5	1250mm	1500mm	7333mm	13m3
6	1250mm	1500mm	8553mm	16m3
7	1206mm	1500mm	8627mm	15m3
8	1206mm	1500mm	17,769mm	32m3
9	1206mm	1500mm	13,094mm	23m3
10	1210mm	1500mm	4800mm	15m3

11 Trees in ground



Total Area = 162.2m²

Small Trees- (Min 9m3 soil volume) Planter No. 1 - 10
Corymbia citriodora – Eucalyptus Baby Citro
Corymbia citriodora 'scentuous' – Dwarf Lemon Scented Gum
Eucalyptus leucoxylon– 'Euky Dwarf' / Dwarf Gum Tree
Medium Trees- (Min 35m3 soil volume) Planter No. 11
Eucalyptus haemastoma dwarf – Scribbly Gum



APPENDIX

2: UAP PUBLIC ART REPORT





MEADOWBANK EDUCATION AND EMPLOYMENT PRECINCT SCHOOLS PROJECT

PUBLIC ART STRATEGY

Woods Bagot & Urbis
UAP Reference: P1511
June 2019

Renders supplied courtesy WOODS BAGOT

UAP

PROJECT CONTEXT PROJECT OVERVIEW

UAP

The NSW Government is spending \$6 billion over 4 years to deliver more than 170 new and upgraded schools. This includes an additional \$160 million spend in 2018/2019 as part of the record \$747 million maintenance investment announced last year. This is the biggest investment in public school infrastructure in the history of NSW.

Welcoming students from Kindergarten to Year 12, the Meadowbank Education and Employment Precinct Schools Project (MEEPSP) will include a new primary school and secondary school, alongside the State's first technology focused TAFE college.

Marsden High School will be relocated to the new Education Precinct and will accommodate up to 1,500 secondary school students. Meadowbank Public School will increase its capacity to 1,000 places, following its relocation to the New Precinct.

MEEPSP is a once in a generation opportunity to create a learning environment for school students that is future focused, innovative and functional. An Education Precinct that is responsive to educational, economic and environmental conditions and requirements. A place that embodies the notion of life-long learning, through local community outreach and considered engagement with neighbouring educational facilities, including TAFE New South Wales. A learning environment that is future-flexible and adaptable to empower the next generation of students to excel in their education.



PROJECT CONTEXT

ARCHITECTURAL VISION

UAP

The Woods Bagot architectural design for Meadowbank Education and Employment Precinct Schools Project is truly visionary, creating an educational precinct that will retain its contemporaneity well into the future. Not only does the design incorporate structures that facilitate the latest international approaches to education and integrated learning, it also nods to changing energy systems and is responsive to environmental conditions and requirements.

Inspired thematically by the treehouse, Woods Bagot has embraced a philosophy centred on 'designing from the inside out by bringing the outside in'. This has resulted in a series of buildings that enhance connections with nature and maximise outdoor learning and play opportunities, on ground levels and also versatile green terraces stepped vertically and following the ascension of the school skyward.

A vast and well-established tree network typifies the area and it is this character that the architecture looks to compliment with sustainable structural elements. The architectural language is refined and unobtrusive, comprised of clean intelligent lines that allow the

surrounding natural environment to sing. Rooftop gardens and green spaces embrace 'discovery' principles with a camouflaging effect. Biophilia is a further driver for Woods Bagot: the innate human need to connect with the natural environment and the holistic sense of well-being this evokes.

While fencing is necessary to the educational precinct, a strong emphasis is placed on permeability of the physical environment to encourage transition, transparency and minimise the visual impact of barriers from the street. This will be achieved by preferencing vertical bar railings populated plentifully with vegetation, welcoming not only students but the greater community within which the Schools sit.

Inspired thematically by the treehouse, Woods Bagot has embraced a philosophy centred on 'designing from the inside out by bringing the outside in'.



PROJECT CONTEXT

MEADOWBANK: PAST TO PRESENT

UAP

HERITAGE

The first inhabitants of the region were the Wallumedegal (Wattamattagal) clan of the Darug nation. Midden sites lined the Lane Cove River and petroglyphs in the Lane Cove Valley indicate evidence of their occupation for up to approximately 30,000 years prior to European settlement. 'Wallumatta' is recorded as the original Indigenous name given to the Ryde-Hunters Hill area of Sydney's Lower North Shore. This heritage is recognised today in the naming of the Wallumatta Nature Reserve.

It is likely that the name 'Wallumedegal' was derived from the words 'wallumai' (snapper fish) and 'matta', a word used to describe a place (usually a 'water place'). During the early years of European occupation, many Indigenous people in the area, notably Bennelong, Nanberry and Bidgee Bidgee, played a significant role in the development of relations between the Indigenous inhabitants and the European colonists.

Ryde is the third oldest settlement in Australia, following Sydney and Parramatta. It was settled in 1792 with small land grants handed to ex-convicts in an area known as 'Eastern Farms'. Within a few years Eastern Farms had become an important supplier of poultry, fruit and vegetables to the colony of Sydney.

As settlers demanded more land for grazing, the

government gazetted large tracts of land along the southern side of Lane Cove river as commons. This included the 'Field of Mars' common, in an area allegedly named as such by Governor Phillip for the former British marines to whom he had allocated land.

North Ryde was established in the mid 19th century as a farming district, and was characterised by market gardens, orchards and bushland with extensive areas for recreation and picnicking. Spectacular natural waterfalls and the Khartoum open air theatre were just a few of the attractions which brought people to the region.

TODAY

Meadowbank, with a population of approximately 4,500 people, continues to offer the spirit of an urban waterfront lifestyle. The industrial warehouses have made way for more residential zones with many young families moving to the area.

The new Meadowbank Education and Employment Precinct Schools Project will see Meadowbank TAFE transformed into the first technology focused TAFE college in the State and will sit alongside a new K-12 school which will dramatically increase the population in the area.

