



LEGEND

VEHICULAR ENTRY / EXIT

PEDESTRIAN ENTRY / EXIT

A

GRAY PUKSAND

DISCLAIMER

This document may not be secure, may be corrupted in transmission or due to software incompatibility and/or may be amended or altered by third parties after leaving Gray Puksand's possession.

Gray Puksand is not responsible for and accepts no liability for such matters. Subject only to any conflicting provision within any prior binding agreement, by Gray Puksand (which agreement may also contain additional conditions relating to this document and its use):

- The content of this document is confidential and copyright in it belongs to Gray Puksand. They are permitted only to be opened, read and used by the addressee.
- All users of this document must carry out all relevant investigations and must examine, take advice as required and satisfy themselves concerning the contents, correctness and sufficiency of the attachment and its contents for their purposes.
- To the extent permitted by law, all conditions and warranties concerning this document or any use to which they may be put (whether as to quality, outcome, fitness, care, skill or otherwise) whether express or implied by statute, common law, equity, trade, custom or usage or otherwise are expressly excluded.
- Any person using or relying on document releases indemnifies, and will keep indemnified, Gray Puksand against all claims, liabilities, loss, costs and expenses arising directly or indirectly out of or in connection with such use or reliance including without limitation any misrepresentation, error or defect in this document.

Contractors to use Architectural drawings for set out.
Contractors to check & verify all Dimensions on Site prior to Construction/Fabrication.
Figured Dimensions take precedence over Scaled Dimensions.
Any Discrepancies should be immediately referred to the Architect.
All work to comply with N.C.C. Statutory Authorities & Relevant Australian Standards.

NSW Nominated Architects Scott Moylan 7147 Craig Saltmarsh 6569

HANSEN YUNCKEN



REV	DESCRIPTION	DATE
A	Issue for SSDA	04.10.19
B	Issue for SSDA	09.10.19
C	Issue for SSDA	30.04.20

PROJECT NO	220014
DRAWN	RD
CHECKED	BH
APPROVED	BH

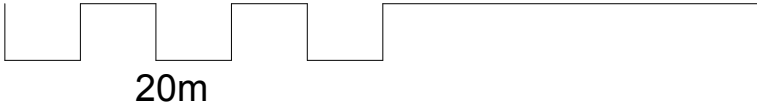
TAFE NSW - Meadowbank
Multi-Trades and Digital
Technology Hub

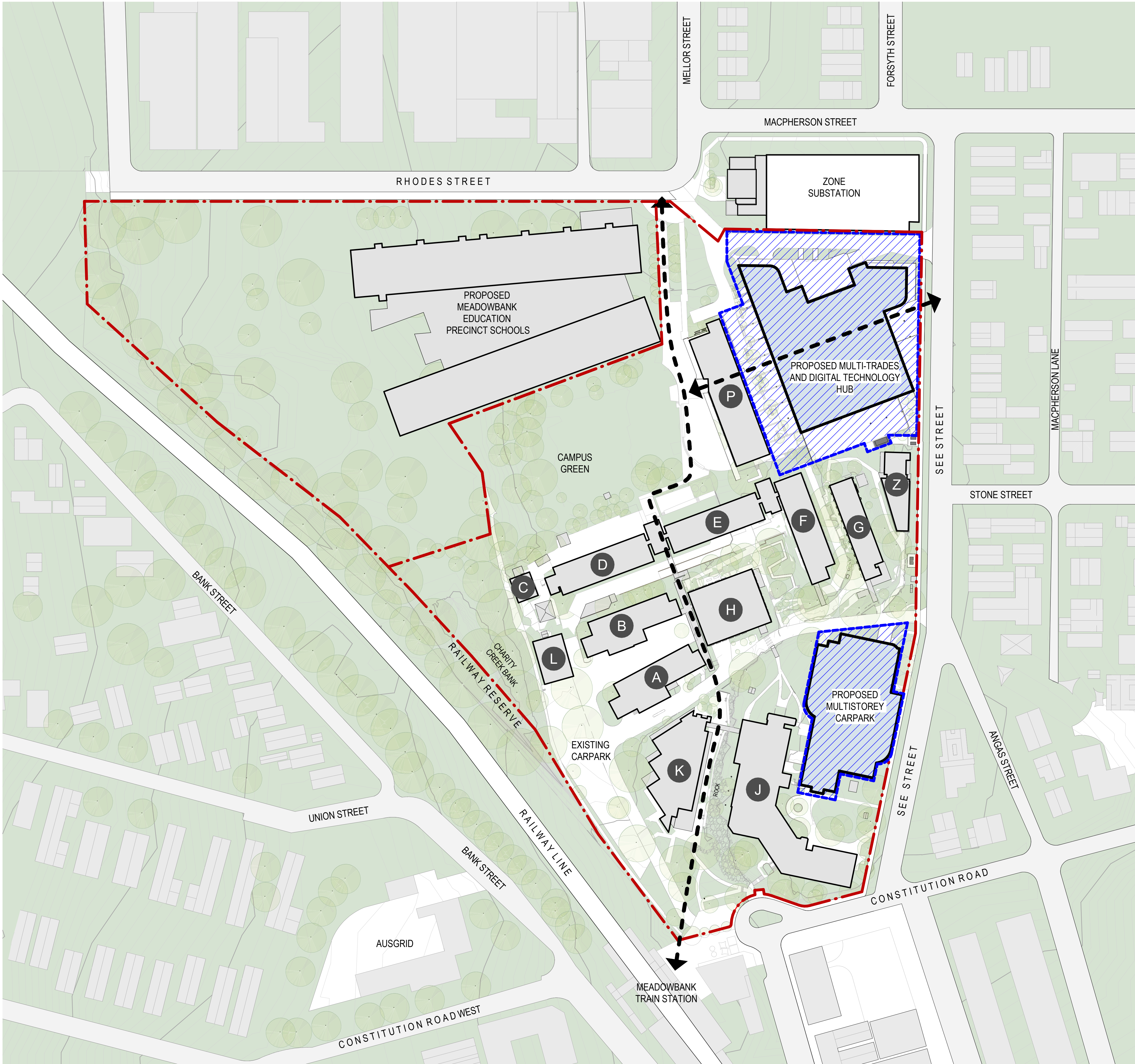
SSDA APPROVAL ISSUE

SITE ANALYSIS PLAN

DWG #	DA02	REV	C
SCALE @ A1	As indicated		

Scale 1:1000





LEGEND

- EXTENT OF SSD SCOPE
- PEDESTRIAN ACCESS
- BOUNDARY LINE
- EXISTING BUILDING NAME

GRAY PUKSAND

DISCLAIMER
This document may not be secure, may be corrupted in transmission or due to software incompatibility and/or may be amended or altered by third parties after leaving Gray Puksand's possession.
Gray Puksand is not responsible for and accepts no liability for such matters. Subject only to any conflicting provision within any prior binding agreement, by Gray Puksand (which agreement may also contain additional conditions relating to this document and its use):
1. The content of this document is confidential and copyright in it belongs to Gray Puksand. They are permitted only to be opened, read and used by the addressee.
2. All users of this document must carry out all relevant investigations and must examine, take advice as required and satisfy themselves concerning the contents, correctness and sufficiency of the attachment and its contents for their purposes.
3. To the extent permitted by law, all conditions and warranties concerning this document or any use to which they may be put (whether as to quality, outcome, fitness, care, skill or otherwise) whether express or implied by statute, common law, equity, trade, custom or usage or otherwise are expressly excluded.
4. Any person using or relying on this document releases indemnifies, and will keep indemnified, Gray Puksand against all claims, liabilities, loss, costs and expenses arising directly or indirectly out of or in connection with such use or reliance including without limitation any misrepresentation, error or defect in this document.
Contractors to use Architectural drawings for set out.
Contractors to check & verify all Dimensions on Site prior to Construction/Fabrication. Figured Dimensions take precedence over Scaled Dimensions.
Any Discrepancies should be immediately referred to the Architect.
All work to comply with N.C.C. Statutory Authorities & Relevant Australian Standards.
NSW Nominated Architects Scott Moylan 7147 Craig Saltmarsh 6569

HANSEN YUNCKEN



REV	DESCRIPTION	DATE
A	Issue for SSDA	04.10.19
B	Issue for SSDA	09.10.19
C	Issue for SSDA	29.01.20
D	Issue for SSDA	30.04.20

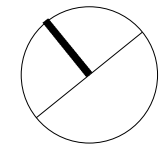
PROJECT NO	220014
DRAWN	RD
CHECKED	BH
APPROVED	BH

TAFE NSW - Meadowbank
Multi-Trades and Digital
Technology Hub

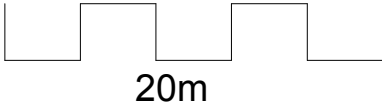
SSDA APPROVAL ISSUE

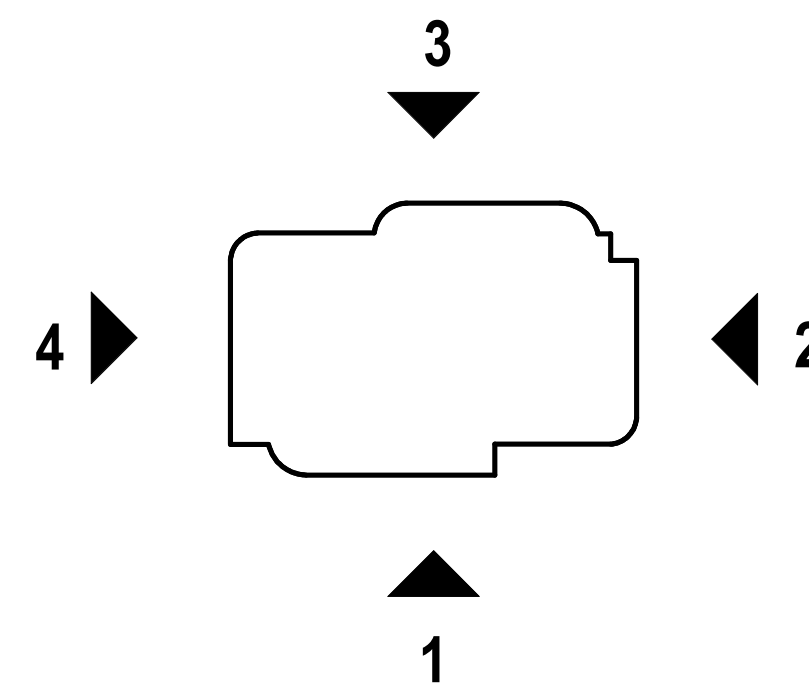
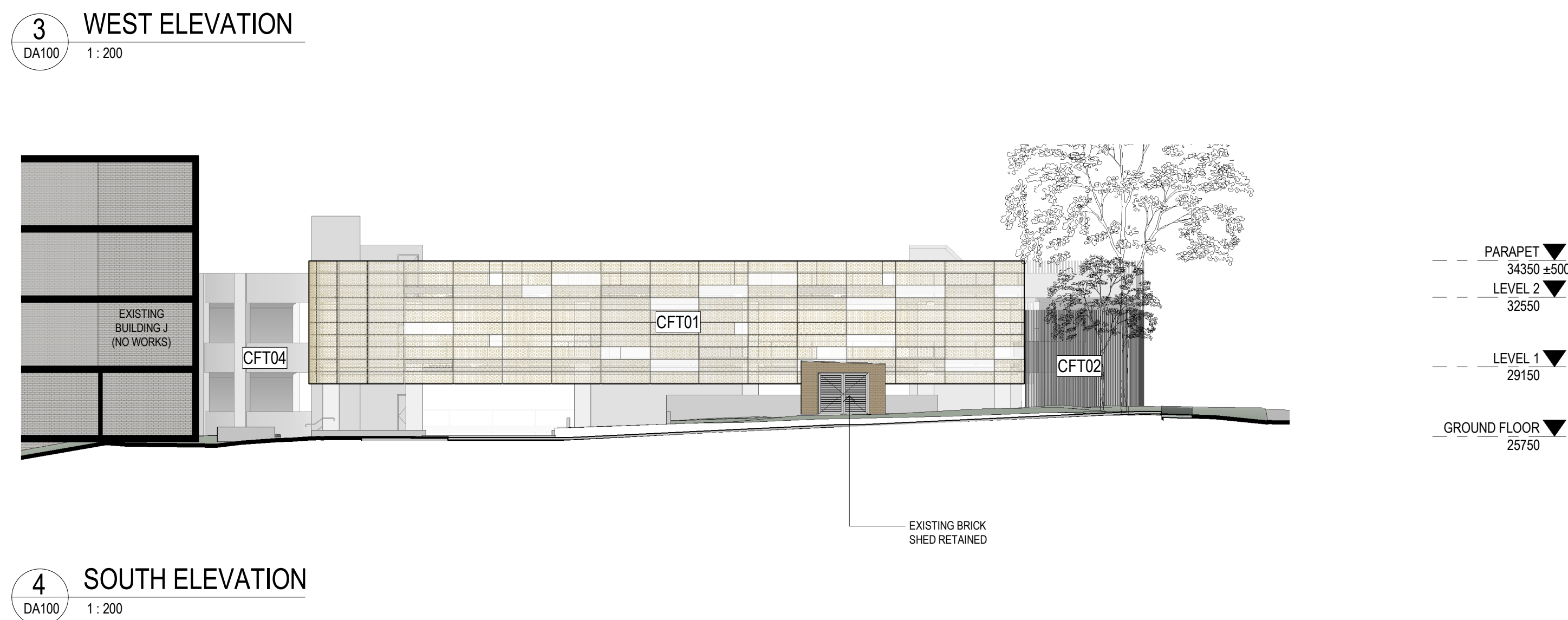
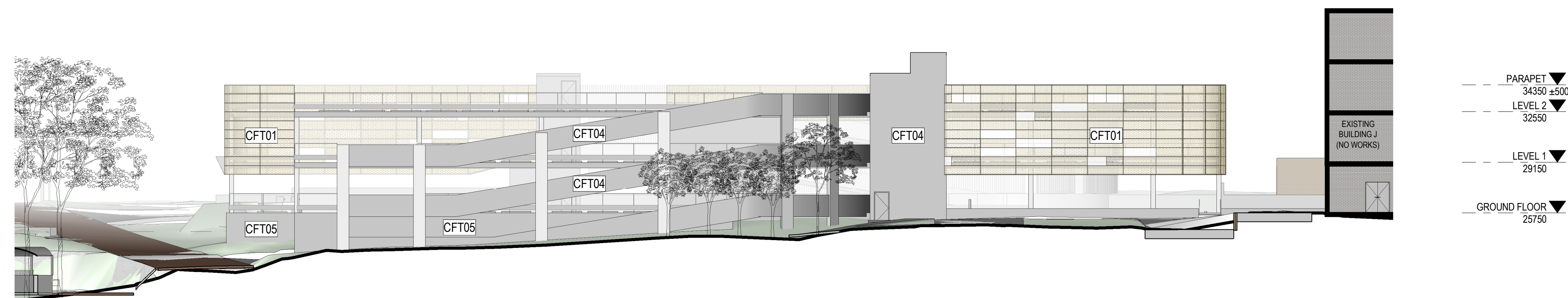
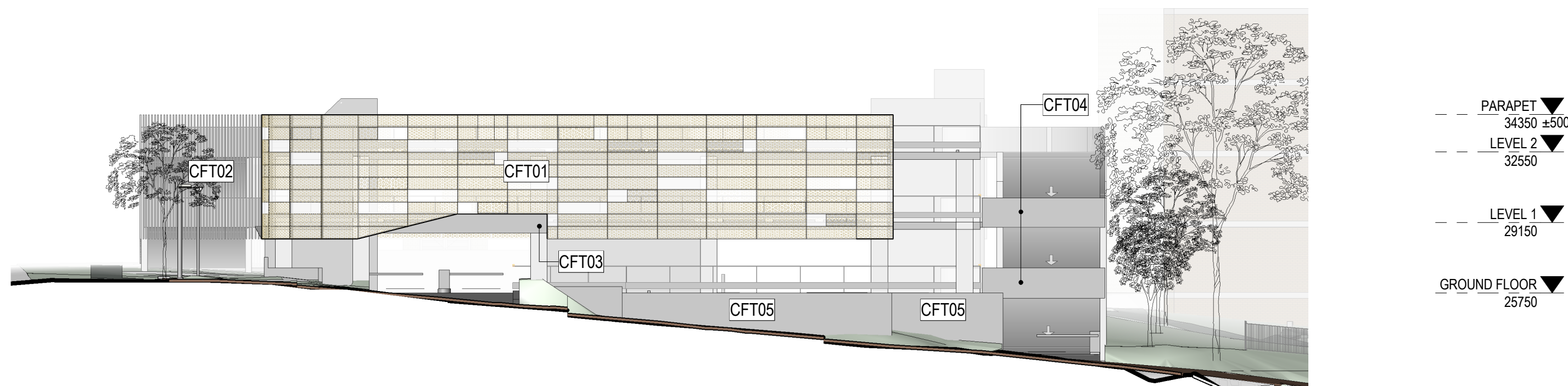
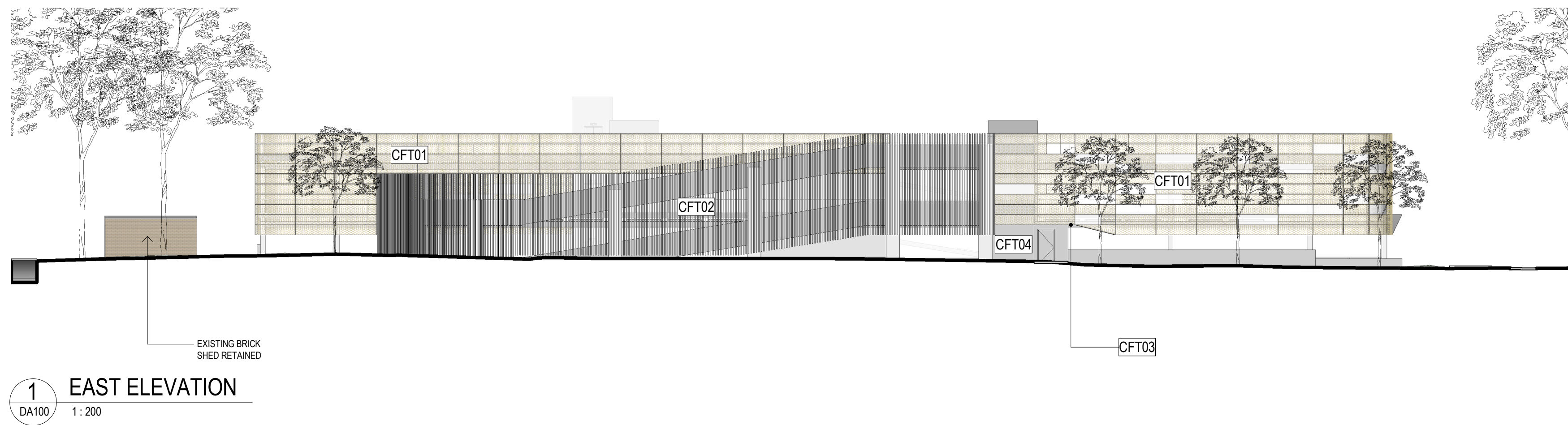
PROPOSED SITE PLAN

DWG #	DA03	REV	D
SCALE @ A1	As indicated		



Scale 1:1000





— — —	PARAPET	▼
	34350	±500
— — —	LEVEL 2	▼
	32550	
— — —	LEVEL 1	▼
	29150	
— — —	GROUND FLOOR	▼
	25750	

FACADE TYPE LEGEND

CFT01	PERFORATED METAL SCREEN MIN 50% PERFORATION TOTAL
CFT02	VERTICAL CLADDING BATTENS
CFT03	FOLDED METAL AWNING
CFT04	EXPOSED CONCRETE
CFT05	BLOCKWORK

GRAY PUKSAND

DISCLAIMER

This document may not be secure, may be corrupted in transmission or due to software incompatibility and/or may be amended or altered by third parties after leaving Gray Puksand's possession

Gray Puksand is not responsible for and accepts no liability for such matters. Subject only to any conflicting provision within any prior binding agreement by Gray Puksand (which agreement may also contain additional conditions relating to this document and its use):

1. The content of this document is confidential and copyright in it belongs to Gray Puksand. They are permitted only to be opened, read and used by the addressee.

2. All users of this document must carry out all relevant investigations and must examine, take advice as required and satisfy themselves concerning the contents, correctness and sufficiency of the attachment and its contents for their purposes.

3. To the extent permitted by law, all conditions and warranties concerning this document or any use to which they may be put (whether as to quality, outcome, fitness, care, skill or otherwise) whether express or implied by statute, common law, equity, trade, custom or usage or otherwise are expressly excluded.

4. Any person using or relaying document releases indemnifies, and will keep indemnified, Gray Puksand against all claims, liabilities, loss, costs and expenses arising directly or indirectly out of or in connection with such use or reliance including without limitation any misrepresentation, error or defect in this document.

Contractors to use Architectural drawings for set out.
Contractors to check & verify all Dimensions on Site prior to Construction/Fabrication.
Figured Dimensions take precedence over Scaled Dimensions.
Any Discrepancies should be immediately referred to the Architect.
All work to comply with N.C.C. Statutory Authorities & Relevant Australian Standards.

NSW Nominated Architects Scott Moylan 7147 Craig Saltmarsh 6569



REV	DESCRIPTION	DATE
A	ISSUE FOR SSDA	30.04.20

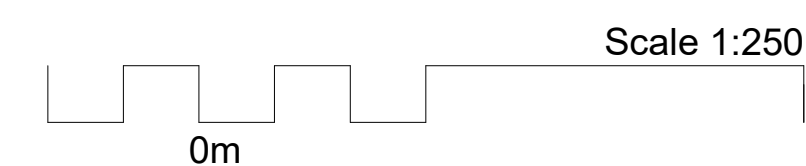
PROJECT NO	220014
DRAWN	RD / TA
CHECKED	RD
APPROVED	JH

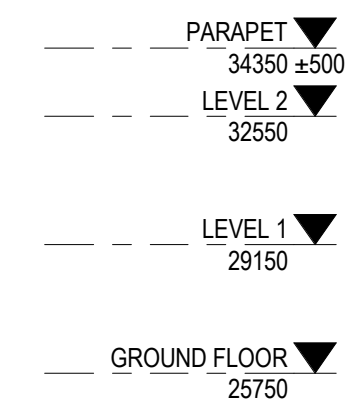
TAFE NSW Meadowbank - Multistorey Carpark

SSDA APPROVAL ISSUE

ELEVATIONS

DWG #	DA120	REV	A
SCALE @ A1	As indicated		





CFT01	PERFORATED METAL SCREEN MIN 50% PERFORATION TOTAL
CFT02	VERTICAL CLADDING BATTENS
CFT03	FOLDED METAL AWNING
CFT04	EXPOSED CONCRETE
CFT05	BLOCKWORK

DISCLAIMER

This document may not be secure, may be corrupted in transmission or due to software incompatibility and/or may be amended or altered by third parties after leaving Gray Puskas's possession

Gray Puksand is not responsible for and accepts no liability for such matters. Subject only to any conflicting provision within any prior binding agreement by Gray Puksand (which agreement may also contain additional conditions relating to this document and its use):

1. The content of this document is confidential and copyright in it belongs to Gray Puksand. They are permitted only to be opened, read and used by the addressee.
2. All users of this document must carry out all relevant investigations and must examine, take advice as required and satisfy themselves concerning the contents, correctness and sufficiency of the attachment and its contents for their purposes.

3. To the extent permitted by law, all conditions and warranties concerning this document or any use to which they may be put (whether as to quality, outcome, fitness, care, skill or otherwise) whether express or implied by statute, common law, equity, trade, custom or usage or otherwise are expressly excluded.

4. Any person using or relying on document releases indemnifies, and will keep indemnified, Gray Puksand against all claims, liabilities, losses, costs and expenses arising directly or indirectly out of or in connection with such use or reliance including without limitation any misrepresentation, error or defect in this document.

Contractors to use Architectural drawings for set out.
Contractors to check & verify all Dimensions on Site prior to Construction/Fabrication.
Figured Dimensions take precedence over Scaled Dimensions.
Any Discrepancies should be immediately referred to the Architect.
All work to comply with N.C.C. Statutory Authorities & Relevant Australian Standards.

NSW Nominated Architects Scott Moylan 7147 Craig Saltmarsh 6569

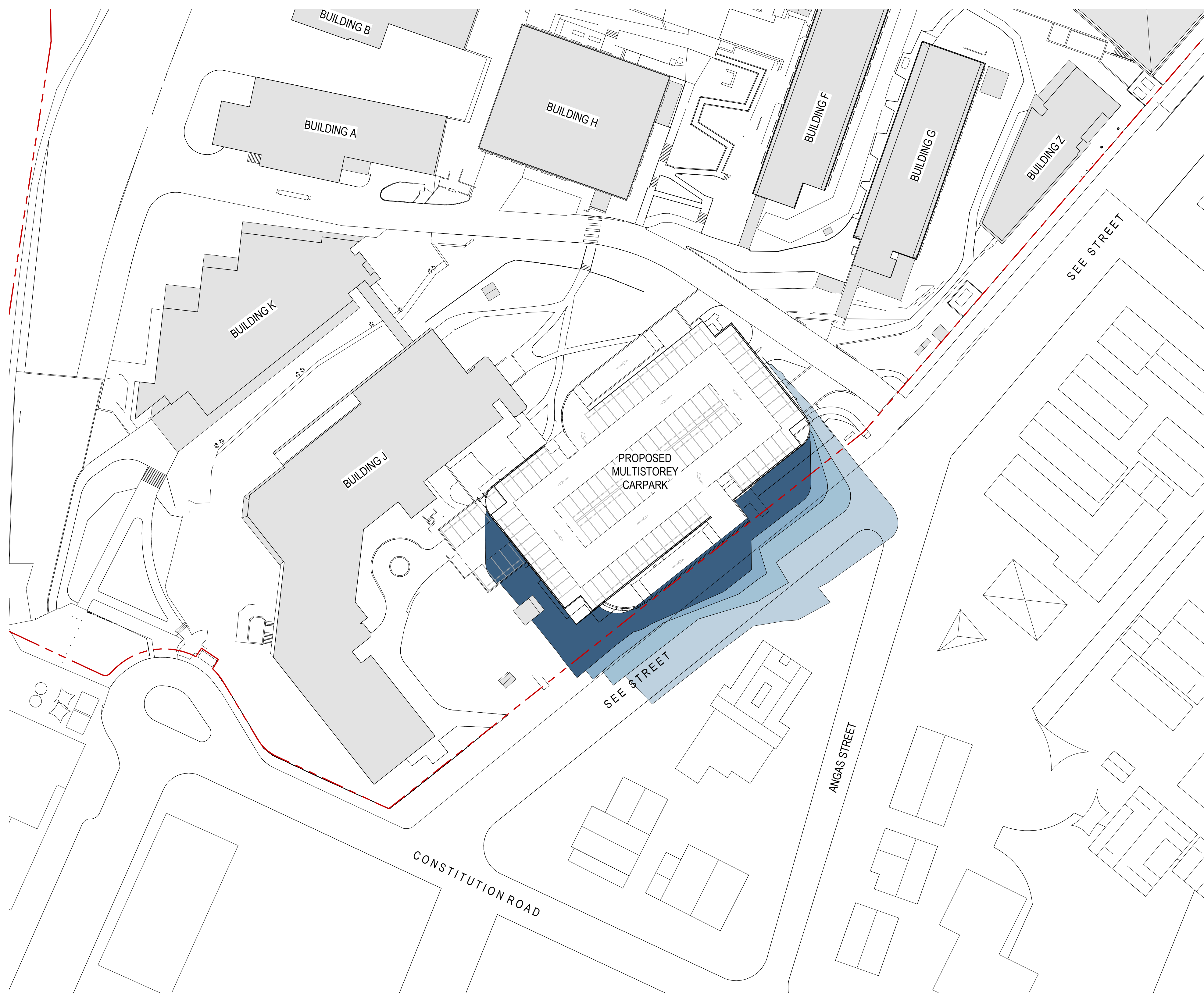


PROJECT NO	220014
DRAWN	RD / TA
CHECKED	RD
APPROVED	JH

SECTIONS

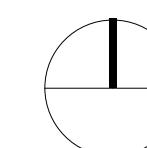
DWG #	DA125	REV	A
SCALE @ A1	As indicated		



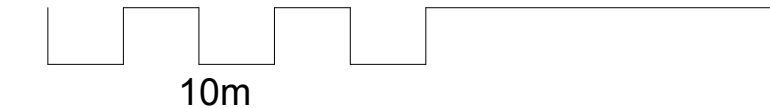


1 MULTISTOREY CARPARK - WINTER STUDY

SCALE 1 : 500



Scale 1:500



LEGEND

12PM

1PM

 2PM

3PM

GRAY PUKSAND

DISCLAIMER

This document may not be secure, may be corrupted in transmission or due to software incompatibility and/or may be amended or altered by third parties after leaving Gray Puksand's possession

Gray Puksand is not responsible for and accepts no liability for such matters. Subject only to any conflicting provision within any prior binding agreement by Gray Puksand (which agreement may also contain additional conditions relating to this document and its use):

1. The content of this document is confidential and copyright in it belongs to Gray Puksand. They are permitted only to be opened, read and used by the addressee.

2. All users of this document must carry out all relevant investigations and must examine, take advice as required and satisfy themselves concerning the contents, correctness and sufficiency of the attachment and its contents for their purposes.

3. To the extent permitted by law, all conditions and warranties concerning this document or any use to which they may be put (whether as to quality, outcome, fitness, care, skill or otherwise) whether express or implied by statute, common law, equity, trade, custom or usage or otherwise are expressly excluded.

4. Any person using or relaying document releases indemnifies, and will keep indemnified, Gray Puksand against all claims, liabilities, loss, costs and expenses arising directly or indirectly out of or in connection with such use or reliance including without limitation any misrepresentation, error or defect in this document.

Contractors to use Architectural drawings for set out.
Contractors to check & verify all Dimensions on Site prior to Construction/Fabrication.
Figured Dimensions take precedence over Scaled Dimensions.
Any Discrepancies should be immediately referred to the Architect.
All work to comply with N.C.C. Statutory Authorities & Relevant Australian Standards.

NSW Nominated Architects Scott Moylan 7147 Craig Saltmarsh 6569

HANSEN YUNCKEN

[illegible]

PROJECT NO	220014
DRAWN	RD / TA
CHECKED	RD
APPROVED	JH

TAFE NSW - Meadowbank
Multi-Trades and Digital
Technology Hub

SSDA APPROVAL ISSUE

MULTISTOREY CARPARK WINTER SHADOW DIAGRAMS IMPACT STUDY

DWG # **DA137** REV **A**

SCALE @ A1 1 : 500