

## May Patterson

---

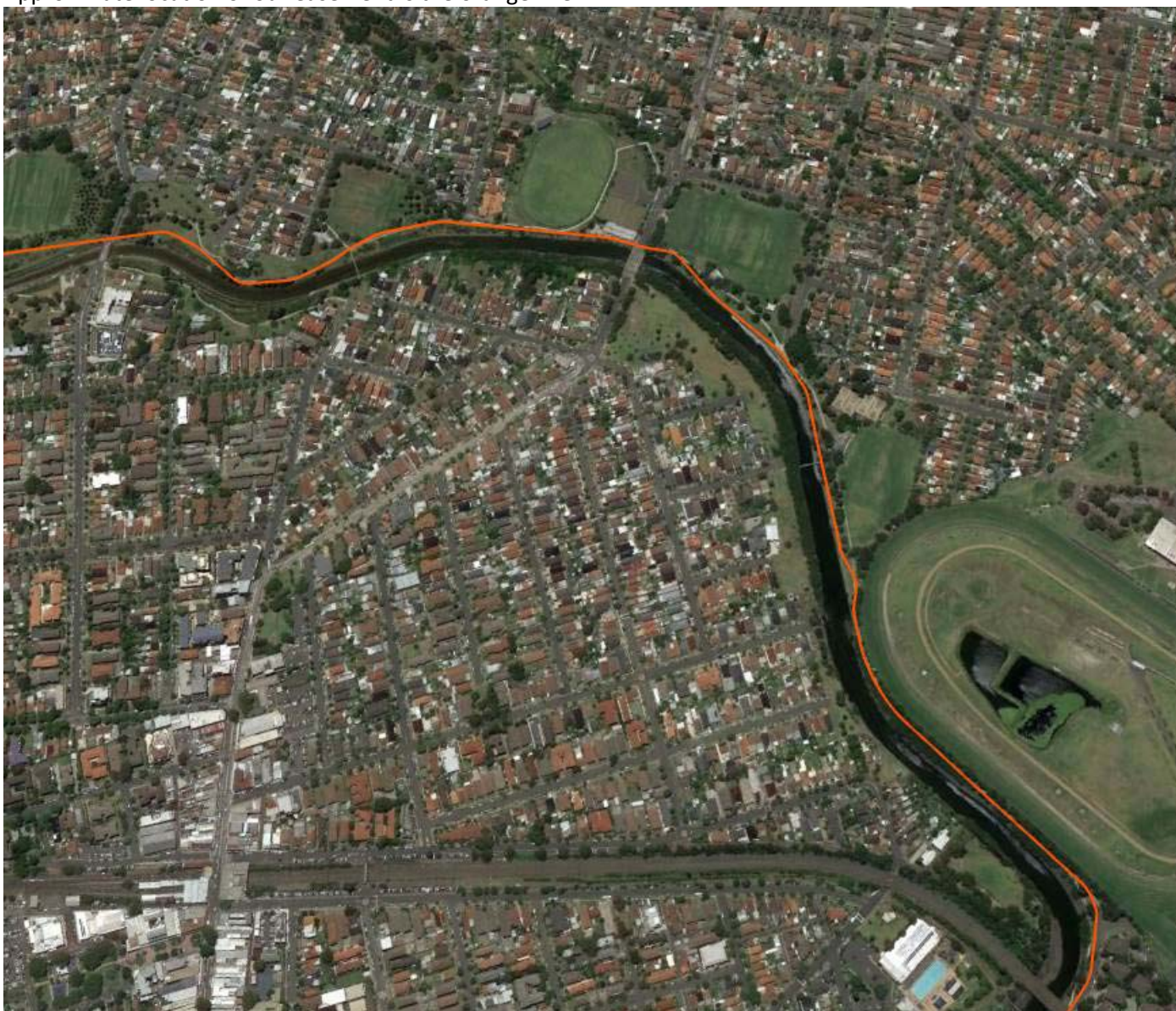
**From:** Rob Moore <rfmoore@caltex.com.au>  
**Sent:** Monday, 4 November 2019 11:50 AM  
**To:** May Patterson  
**Subject:** RE: Major Projects – New Request for Advice - Powering Sydney's Future (SSI-8583)

Hi May,

There appears to be one location where the Transgrid project will cross the Caltex operated Sydney Metropolitan Pipeline (SMP); that is at your designated special crossing at Croydon Park.

The SMP is in the same trench and same easement as the Viva Energy jet fuel pipeline to Mascot Airport.

Approximate location of our easement is the orange line.



The project will need to consult with Caltex and Viva Energy prior to designing the crossing.

Regards,  
Rob

**Rob Moore**

**NSW Pipelines Manager**

CALTEX AUSTRALIA PETROLEUM PTY LTD

4 Penrhyn Road, Banksmeadow NSW 2019 | Postal: Locked Bag 2000 Taren Point NSW 2229

M: 0411 252 394

E: [rfmoore@caltex.com.au](mailto:rfmoore@caltex.com.au) | [www.caltex.com.au](http://www.caltex.com.au)



---

**From:** May Patterson <May.Patterson@planning.nsw.gov.au>  
**Sent:** Monday, 4 November 2019 11:14 AM  
**To:** May Patterson <May.Patterson@planning.nsw.gov.au>  
**Subject:** RE: Major Projects – New Request for Advice - Powering Sydney's Future (SSI-8583)

Good morning,

Further to the Department's email on Friday 11 October 2019, seeking your comments and feedback on the proposed 'Powering Sydney's Future' state significant project, the Department would kindly like to remind you that comments are due this **Friday 8 November 2019**.

Please let me know if the Department will be expecting your comments and when your comments will be provided.

I thank you for your time and consideration on this request for advice.

Please do not hesitate to contact me if you have any questions.

Kind regards,

**May Patterson**  
**Team Leader**

Planning and Assessment | Department of Planning, Industry and Environment

T 02 8275 1190 | E [may.patterson@planning.nsw.gov.au](mailto:may.patterson@planning.nsw.gov.au)

Level 30, 320 Pitt Street, Sydney NSW 2001

[www.dpie.nsw.gov.au](http://www.dpie.nsw.gov.au)



**Planning,  
Industry &  
Environment**

*The Department of Planning, Industry and Environment acknowledges that it stands on Aboriginal land. We acknowledge the traditional custodians of the land and we show our respect for elders past, present and emerging through thoughtful and collaborative approaches to our work, seeking to demonstrate our ongoing commitment to providing places in which Aboriginal people are included socially, culturally and economically.*

---

**From:** May Patterson  
**Sent:** Friday, 11 October 2019 1:25 PM  
**To:** May Patterson <[May.Patterson@planning.nsw.gov.au](mailto:May.Patterson@planning.nsw.gov.au)>  
**Subject:** Major Projects – New Request for Advice - Powering Sydney's Future (SSI-8583)

**Powering Sydney's Future (SSI 8583)  
State Significant Infrastructure**

Dear Sir/Madam

TransGrid has submitted a State Significant Infrastructure application for the proposed Powering Sydney's Future project (SSI 8583) under section 5.12 of the *Environmental Planning and Assessment Act 1979*.

The Environmental Impact Statement will be publicly exhibited from 11 October 2019 to 22 November 2019.

The Department invites you to advise on the proposal, including advice on recommended conditions by the due date **(8 November 2019)**

The application and supporting documents will be made available on the Department's website at:  
<https://www.planningportal.nsw.gov.au/major-projects/project/9956>

Alternatively, the EIS can be accessed via sharepoint: [Powering Sydney's Future EIS](#).

Please do not hesitate to contact me if you have any questions.

Kind regards,

**May Patterson**  
**Team Leader**

Planning and Assessment | Department of Planning, Industry and Environment  
T 02 8275 1190 | E [may.patterson@planning.nsw.gov.au](mailto:may.patterson@planning.nsw.gov.au)  
Level 30, 320 Pitt Street, Sydney NSW 2001  
[www.dpie.nsw.gov.au](http://www.dpie.nsw.gov.au)



*The Department of Planning, Industry and Environment acknowledges that it stands on Aboriginal land. We acknowledge the traditional custodians of the land and we show our respect for elders past, present and emerging through thoughtful and collaborative approaches to our work, seeking to demonstrate our ongoing commitment to providing places in which Aboriginal people are included socially, culturally and economically.*

  
If you consider this message to be unsolicited junk please click [here](#) . This will submit a copy to Websense for review by the Spam Team.

---

\*\*\* IMPORTANT INFORMATION \*\*\*

This correspondence is for the named person's use only. It may contain confidential or legally privileged information or both. No confidentiality or privilege is waived or lost by any mistransmission. If you receive this correspondence in error, please immediately delete it from your system and notify the sender. You

must not disclose, copy or rely on any part of this correspondence if you are not the intended recipient. Any opinions expressed in this message are those of the individual sender, except where the sender expressly, and with authority, states them to be the opinions of Caltex Australia Limited or one of its subsidiaries (collectively the "Caltex Group"). Neither the sender nor the Caltex Group warrants that any communication via the Internet is free of errors, viruses, interception or interference. Information is distributed without warranties of any kind.

---