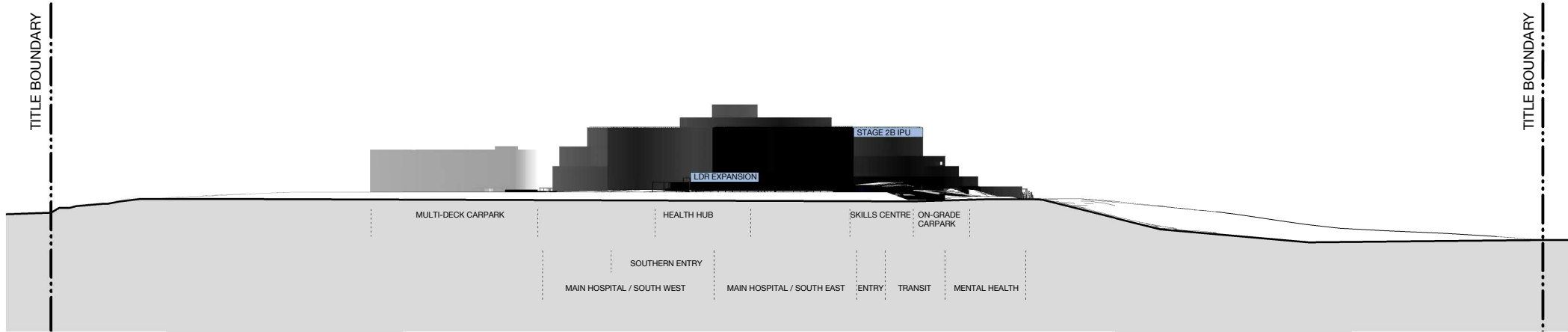
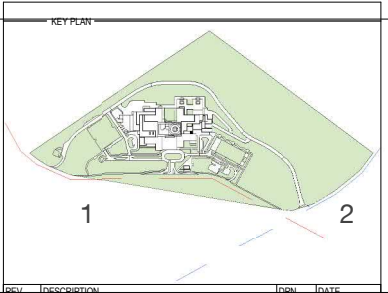


3 CUDGEN ROAD ELEVATION
Elevation 1 : 1250



2 TURNOCK STREET ELEVATION
Elevation 1 : 1250



REV	DESCRIPTION	DRN	DATE
1	ISSUED FOR SSD 2	BM	06/09/19

COPYRIGHT
ALL RIGHTS RESERVED. THIS WORK IS COPYRIGHT AND CANNOT BE REPRODUCED OR COPIED IN ANY FORM OR BY ANY MEANS (GRAPHIC, ELECTRONIC OR MECHANICAL, INCLUDING PHOTOCOPYING) WITHOUT THE WRITTEN PERMISSION OF THE PRINCIPAL UNDER THE TERMS OF THE CONTRACT. ANY LICENCE, EXPRESS OR IMPLIED, TO USE THE DOCUMENT FOR ANY PURPOSE WHATSOEVER IS RESTRICTED TO THE TERMS OF THE AGREEMENT OR IMPLIED AGREEMENT WITH THE PRINCIPAL UNDER THE TERMS OF THE CONTRACT.

DIMENSIONS
USE FIGURED DIMENSIONS, DO NOT SCALE. CONTRACTORS MUST VERIFY ALL DIMENSIONS ON THE SITE BEFORE COMMENCING ANY WORK OR MAKING ANY SHOP DRAWING WHICH MUST BE SUBMITTED AND REVIEWED BEFORE MANUFACTURE.

FIXTURES, FITTINGS & EQUIPMENT SPECIFICATIONS
SUBSTITUTE FF&E EQUIPMENT SPECIFICATIONS
THE FIT-OUT DESIGN AND DOCUMENTATION HAS BEEN COMPLETED ON THE BASIS OF FF&E AND EQUIPMENT ADVISED TO THIS OFFICE AT THE TIME OF BRIEFING THE DESIGN. THE DESIGN PROVISIONS FOR FF&E AND EQUIPMENT INCORPORATES SPATIAL ALLOCATIONS, SERVICING, LOADING AND ACCESS CLEARANCES AND WHERE APPROPRIATE SERVICES REQUIREMENTS, HAVING DUE REGARD FOR SURROUNDING FIXTURES AND FITTINGS. IT SHOULD BE NOTED THAT SUBSTITUTE FF&E OR EQUIPMENT WITH ALTERNATE SPECIFICATIONS SHOULD NOT BE PROCURED PRIOR TO VALIDATING THOSE SPECIFICATIONS AGAINST THE ITEM CONTROL SCHEDULE AND DESIGN PROVISIONS IN THE MODEL. THIS OFFICE ACCEPTS NO RESPONSIBILITY FOR THE PROCUREMENT OF SUBSTITUTE FF&E AND EQUIPMENT WHICH HAS NOT BEEN REVIEWED AND VALIDATED AGAINST THE ORIGINAL DESIGN PROVISIONS.

SERVICE POINTS DISCLAIMER
THE SERVICE POINTS IDENTIFIED ON THESE DRAWINGS HAVE BEEN OVERLAYED FROM THE BUILDING SERVICES ENGINEERING MODEL, AND ARE PROVIDED FOR INFORMATION AND SET-OUT PURPOSES ONLY. WE HAVE BEEN ADVISED BY THE SERVICES ENGINEERS THAT THE POINTS REPRESENTED ON THESE DRAWINGS ARE CORRECT AT THE TIME OF PUBLICATION. THIS OFFICE DOES NOT WARRANT THE ACCURACY OF THIS DATA, REFER TO THE BUILDING SERVICES ENGINEERING DOCUMENTATION FOR THE INSTALLATION OF THE SERVICES POINTS, AND THE INTERFACE BETWEEN THE SERVICES POINTS AND THE RESPECTIVE ENGINEERING SYSTEMS.

ISSUED FOR INFORMATION

ARCHITECTS

BATESSMART™
ABN: 21 134 476 065
LEVEL 4, 89 YORK STREET
SYDNEY NSW 2000, AUSTRALIA
PH: (02) 8299 4600 FAX: (03) 9885 2455

M12147
43 BRISBANE STREET,
SURRY HILLS, NSW 2010
ABN: 69 004 740 996 PH: (02) 8354 5100
E: syd@batesmart.com.au

THIS ARCHITECTURAL DESIGN IS THE COPYRIGHT OF SILVER THOMAS HANLEY AND BATES SMART AND SHALL NOT BE REPRODUCED WITHOUT THEIR WRITTEN PERMISSION

PROJECT MANAGER



CLIENT



PROJECT

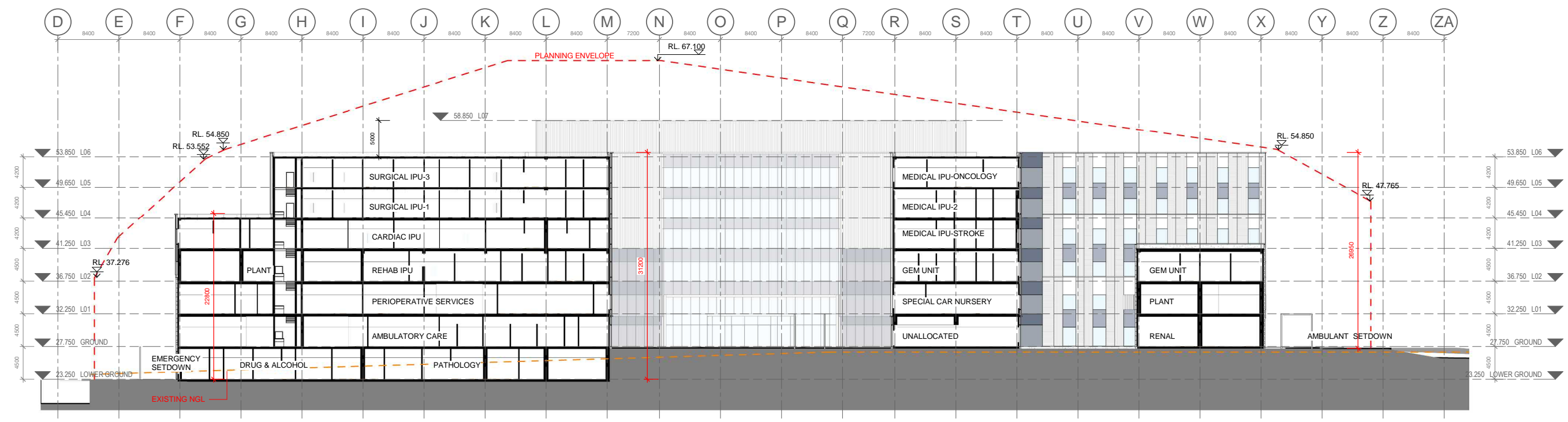
TWEED VALLEY HOSPITAL

DRAWING TITLE

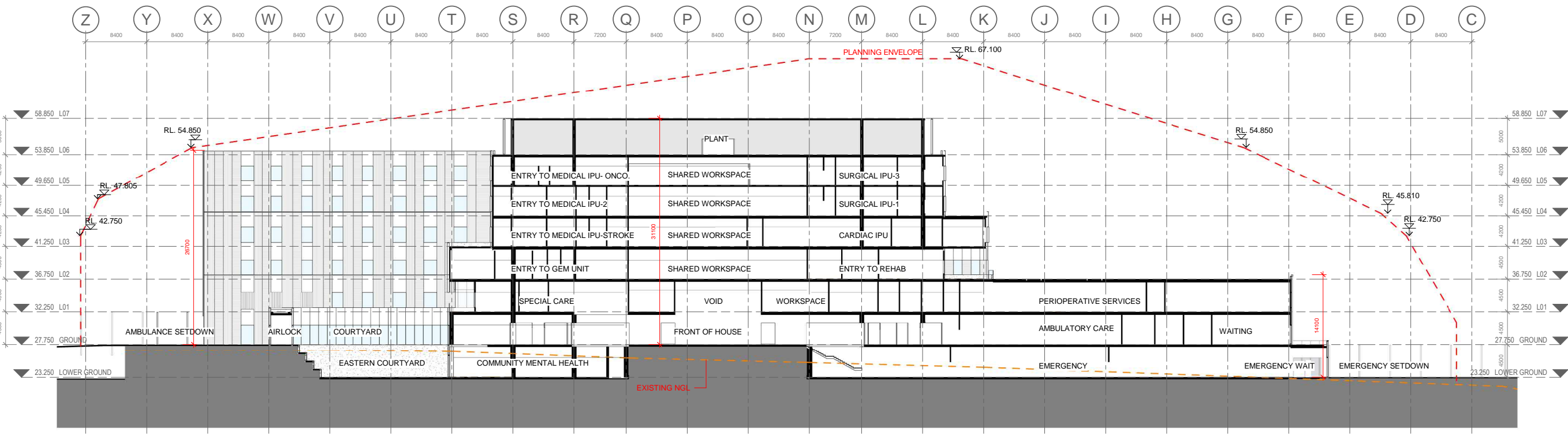
CONTIGUOUS ELEVATIONS
CUDGEN ROAD &
TURNOCK STREET

SCALE	DATE	DRAWN BY	CHECKED
1 : 1250 @ A1	06/09/19	MC	BS
1 : 2500 @ A3			

PROJECT No	DRAWING No	REVISION
10363	STB-AR-SKE-PRW-4000001	1



1 Section A.
3D 1:300



2 Section B.
3D 1:300

KEY PLAN

REV	DESCRIPTION	DRN	DATE
1	ISSUED FOR SS02	BM	06/09/19

COPYRIGHT
ALL RIGHTS RESERVED. THIS WORK IS COPYRIGHTED AND CANNOT BE REPRODUCED OR COPIED IN ANY FORM OR BY ANY MEANS (GRAPHIC, ELECTRONIC OR MECHANICAL INCLUDING PHOTOCOPYING) WITHOUT THE WRITTEN PERMISSION OF THE PRINCIPAL UNDER THE TERMS OF THE CONTRACT. ANY LICENCE, EXPRESS OR IMPLIED, TO USE THE DOCUMENT FOR ANY PURPOSE WHATSOEVER IS RESTRICTED TO THE TERMS OF THE AGREEMENT OR IMPLIED AGREEMENT WITH THE PRINCIPAL UNDER THE TERMS OF THE CONTRACT.

DIMENSIONS
USE FIGURED DIMENSIONS, DO NOT SCALE. CONTRACTORS MUST VERIFY ALL DIMENSIONS ON THE SITE BEFORE COMMENCING ANY WORK OR MAKING ANY SHOP DRAWING WHICH MUST BE SUBMITTED AND REVIEWED BEFORE MANUFACTURE.

FIXTURES, FITTINGS & EQUIPMENT SPECIFICATIONS
SUBSTITUTE FF&E EQUIPMENT SPECIFICATIONS
THE FIT-OUT DESIGN AND DOCUMENTATION HAS BEEN COMPLETED ON THE BASIS OF FF&E AND EQUIPMENT ADVISED TO THIS OFFICE AT THE TIME OF BRIEFING THE DESIGN. THE DESIGN PROVISIONS FOR FF&E AND EQUIPMENT INCORPORATES SPATIAL ALLOCATIONS, SERVICING, LOADING AND ACCESS CLEARANCES AND WHERE APPROPRIATE SERVICES REQUIREMENTS, HAVING DUE REGARD FOR SURROUNDING FIXTURES AND FITTINGS. IT SHOULD BE NOTED THAT SUBSTITUTE FF&E OR EQUIPMENT WITH ALTERNATE SPECIFICATIONS SHOULD NOT BE PROCURED PRIOR TO VALIDATING THOSE SPECIFICATIONS AGAINST THE ITEM CONTROL SCHEDULE AND DESIGN PROVISIONS IN THE MODEL. THIS OFFICE ACCEPTS NO RESPONSIBILITY FOR THE PROCUREMENT OF SUBSTITUTE FF&E AND EQUIPMENT WHICH HAS NOT BEEN REVIEWED AND VALIDATED AGAINST THE ORIGINAL DESIGN PROVISIONS.

SERVICE POINTS DISCLAIMER
THE SERVICE POINTS IDENTIFIED ON THESE DRAWINGS HAVE BEEN OVERLAYED FROM THE BUILDING SERVICES ENGINEERING MODEL AND ARE PROVIDED FOR INFORMATION AND SET-OUT PURPOSES ONLY. WE HAVE BEEN ADVISED BY THE SERVICES ENGINEERS THAT THE POINTS REPRESENTED ON THESE DRAWINGS ARE CORRECT AT THE TIME OF PUBLICATION. THIS OFFICE DOES NOT WARRANT THE ACCURACY OF THIS DATA. REFER TO THE BUILDING SERVICES ENGINEERING DOCUMENTATION FOR THE INSTALLATION OF THE SERVICES POINTS, AND THE INTERFACE BETWEEN THE SERVICES POINTS AND THE RESPECTIVE ENGINEERING SYSTEMS.

ISSUED FOR INFORMATION
ARCHITECTS

STH

BATESSMART.

ABN: 21 134 476 065
LEVEL 4, 89 YORK STREET
SYDNEY NSW 2000, AUSTRALIA
PH: (02) 8299 4600 FAX: (03) 9885 2455

M12147
43 BRISBANE STREET,
SURRY HILLS NSW 2010
ABN: 66 094 740 966 PH: (02) 8354 5100
E: syd@batesmart.com.au

PROJECT MANAGER

CLIENT

Health Infrastructure **Health** Northern NSW Local Health District

PROJECT

TWEED VALLEY HOSPITAL

DRAWING TITLE

OVERALL BUILDING SECTIONS A & B

SCALE

DATE

DRAWN BY

CHECKED

PROJECT No

DRAWING No

REVISION

1:300@A1

06/09/19

BM

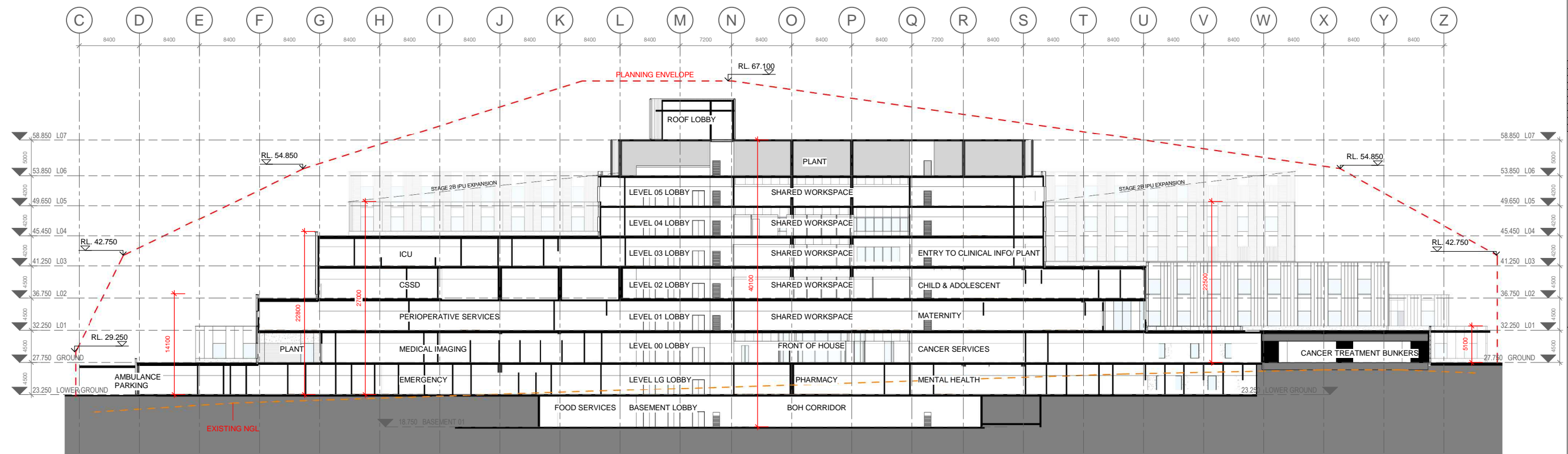
BS

10363

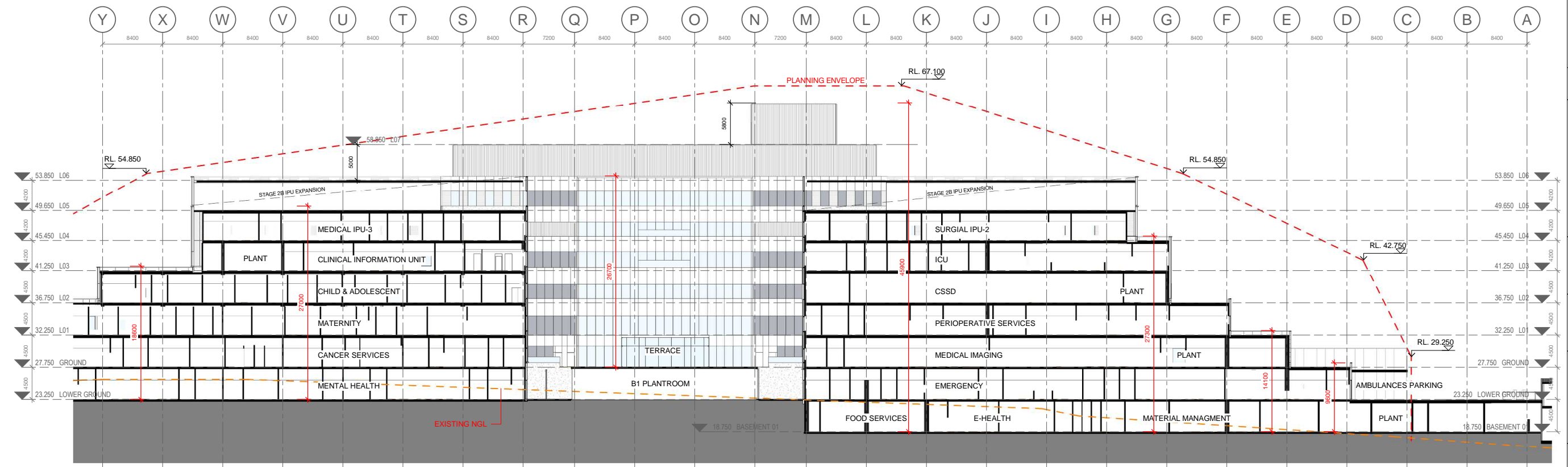
STB-AR-SKE-PRW-5000001

1

B:\M 360\Tweed Valley Hospital\TVL_BS_SITE_BS018.dwg



1 Section C.
3D 1 : 300



2 Section D.
3D 1 : 300

KEY PLAN			
REV	DESCRIPTION	DRN	DATE
1	ISSUED FOR SS02	BM	06/09/19

COPYRIGHT
ALL RIGHTS RESERVED. THIS WORK IS COPYRIGHT AND CANNOT BE REPRODUCED OR COPIED IN ANY FORM OR BY ANY MEANS (GRAPHIC, ELECTRONIC OR MECHANICAL INCLUDING PHOTOCOPYING) WITHOUT THE WRITTEN PERMISSION OF THE PRINCIPAL UNDER THE TERMS OF THE CONTRACT. ANY LICENCE, EXPRESS OR IMPLIED, TO USE THE DOCUMENT FOR ANY PURPOSE WHATSOEVER IS RESTRICTED TO THE TERMS OF THE AGREEMENT OR IMPLIED AGREEMENT WITH THE PRINCIPAL UNDER THE TERMS OF THE CONTRACT.

DIMENSIONS
USE FIGURED DIMENSIONS. DO NOT SCALE. CONTRACTORS MUST VERIFY ALL DIMENSIONS ON THE SITE BEFORE COMMENCING ANY WORK OR MAKING ANY SHOP DRAWING WHICH MUST BE SUBMITTED AND REVIEWED BEFORE MANUFACTURE.

FIXTURES, FITTINGS & EQUIPMENT SPECIFICATIONS
SUBSTITUTE FF&E EQUIPMENT SPECIFICATIONS
THE FIT-OUT DESIGN AND DOCUMENTATION HAS BEEN COMPLETED ON THE BASIS OF FF&E AND EQUIPMENT ADVISED TO THIS OFFICE AT THE TIME OF BRIEFING THE DESIGN. THE DESIGN PROVISIONS FOR FF&E AND EQUIPMENT INCORPORATES SPATIAL ALLOCATIONS, SERVICING, LOADING AND ACCESS CLEARANCES AND WHERE APPROPRIATE SERVICES REQUIREMENTS, HAVING DUE REGARD FOR SURROUNDING FIXTURES AND FITTINGS. IT SHOULD BE NOTED THAT SUBSTITUTE FF&E OR EQUIPMENT WITH ALTERNATE SPECIFICATIONS SHOULD NOT BE PROCURED PRIOR TO VALIDATING THOSE SPECIFICATIONS AGAINST THE ITEM CONTROL SCHEDULE AND DESIGN PROVISIONS IN THE MODEL. THIS OFFICE ACCEPTS NO RESPONSIBILITY FOR THE PROCUREMENT OF SUBSTITUTE FF&E AND EQUIPMENT WHICH HAS NOT BEEN REVIEWED AND VALIDATED AGAINST THE ORIGINAL DESIGN PROVISIONS.

SERVICE POINTS DISCLAIMER
THE SERVICE POINTS IDENTIFIED ON THESE DRAWINGS HAVE BEEN OVERLAYED FROM THE BUILDING SERVICES ENGINEERING MODEL, AND ARE PROVIDED FOR INFORMATION AND SET-OUT PURPOSES ONLY. WE HAVE BEEN ADVISED BY THE SERVICES ENGINEERS THAT THE POINTS REPRESENTED ON THESE DRAWINGS ARE CORRECT AT THE TIME OF PUBLICATION. THIS OFFICE DOES NOT WARRANT THE ACCURACY OF THIS DATA. REFER TO THE BUILDING SERVICES ENGINEERING DOCUMENTATION FOR THE INSTALLATION OF THE SERVICES POINTS, AND THE INTERFACE BETWEEN THE SERVICES POINTS AND THE RESPECTIVE ENGINEERING SYSTEMS.

ISSUED FOR INFORMATION

ARCHITECTS

STH

BATESSMART.

ABN: 21 134 476 065
LEVEL 4, 89 YORK STREET
SYDNEY NSW 2000, AUSTRALIA
PH: (02) 8299 4600 FAX: (03) 9885 2455

M12147
43 BRISBANE STREET,
SURRY HILLS NSW 2010
ABN: 66 094 740 966 PH: (02) 8354 5100
E: syd@batesmart.com.au

THIS ARCHITECTURAL DESIGN IS THE COPYRIGHT OF SILVER THOMAS HANLEY AND BATES SMART AND SHALL NOT BE REPRODUCED WITHOUT THEIR WRITTEN PERMISSION

PROJECT MANAGER

TSA

MANAGEMENT

CLIENT

NSW GOVERNMENT

Health Infrastructure

Health Northern NSW Local Health District

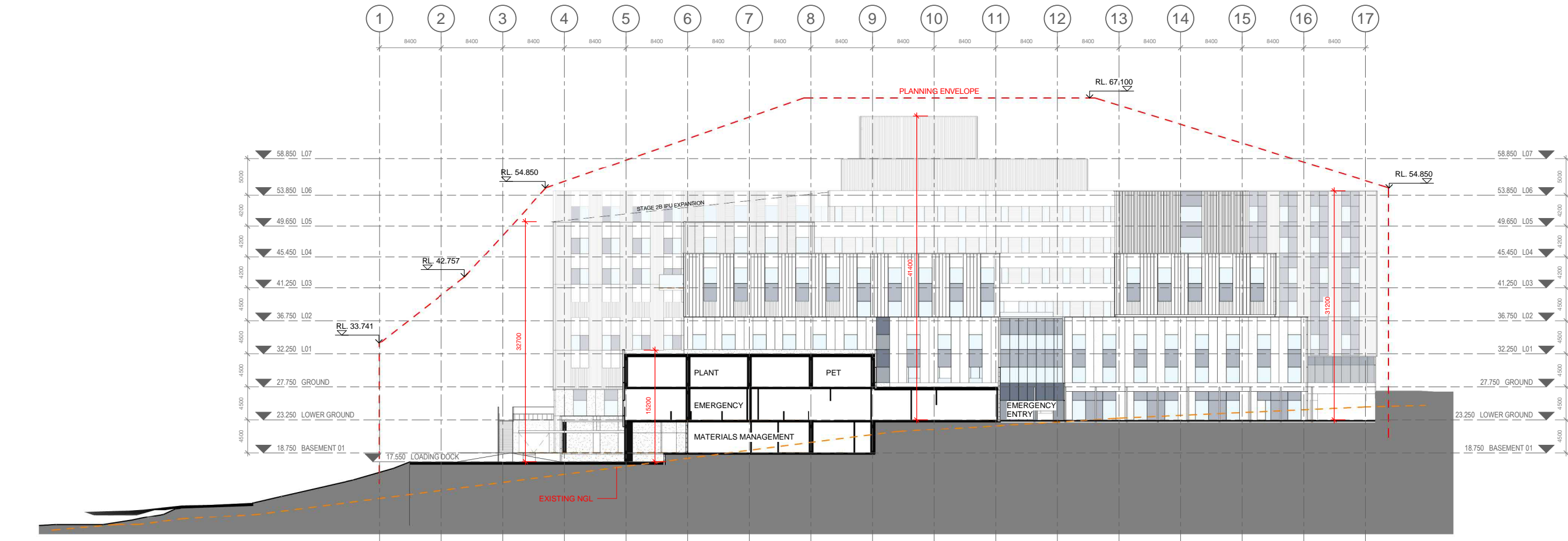
TWEED VALLEY HOSPITAL

DRAWING TITLE

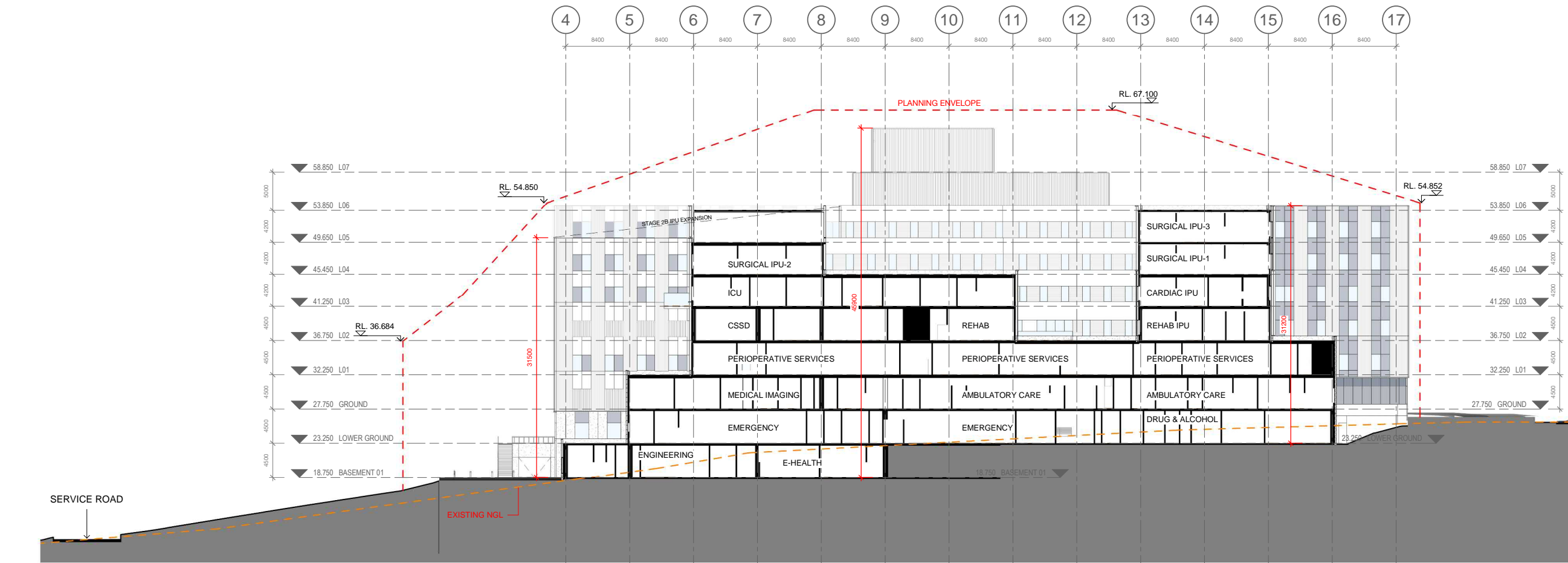
OVERALL BUILDING SECTIONS C & D

SCALE 1 : 300 @ A1 06/09/19 DATE DRAWN BY BM CHECKED BS

PROJECT No 10363 DRAWING No STB-AR-SKE-PRW-5000002 REVISION 1



1 Section E.
3D 1 : 300



2 Section F.
3D 1 : 300

KEY PLAN			
REV	DESCRIPTION	DRN	DATE
1	ISSUED FOR SSO2	BM	06/09/19

COPYRIGHT
ALL RIGHTS RESERVED. THIS WORK IS COPYRIGHT AND CANNOT BE REPRODUCED OR COPIED IN ANY FORM OR BY ANY MEANS (GRAPHIC, ELECTRONIC OR MECHANICAL INCLUDING PHOTOCOPYING) WITHOUT THE WRITTEN PERMISSION OF THE PRINCIPAL UNDER THE TERMS OF THE CONTRACT. ANY LICENCE, EXPRESS OR IMPLIED, TO USE THE DOCUMENT FOR ANY PURPOSE WHATSOEVER IS RESTRICTED TO THE TERMS OF THE AGREEMENT OR IMPLIED AGREEMENT WITH THE PRINCIPAL UNDER THE TERMS OF THE CONTRACT.

DIMENSIONS
USE FIGURED DIMENSIONS. DO NOT SCALE. CONTRACTORS MUST VERIFY ALL DIMENSIONS ON THE SITE BEFORE COMMENCING ANY WORK OR MAKING ANY SHOP DRAWING WHICH MUST BE SUBMITTED AND REVIEWED BEFORE MANUFACTURE.

FIXTURES, FITTINGS & EQUIPMENT SPECIFICATIONS
SUBSTITUTE FF&E EQUIPMENT SPECIFICATIONS
THE FIT-OUT DESIGN AND DOCUMENTATION HAS BEEN COMPLETED ON THE BASIS OF FF&E AND EQUIPMENT ADVISED TO THIS OFFICE AT THE TIME OF BRIEFING THE DESIGN. THE DESIGN PROVISIONS FOR FF&E AND EQUIPMENT INCORPORATES SPATIAL ALLOCATIONS, SERVICING, LOADING AND ACCESS CLEARANCES AND WHERE APPROPRIATE SERVICES REQUIREMENTS, HAVING DUE REGARD FOR SURROUNDING FIXTURES AND FITTINGS. IT SHOULD BE NOTED THAT SUBSTITUTE FF&E OR EQUIPMENT WITH ALTERNATE SPECIFICATIONS SHOULD NOT BE PROCURED PRIOR TO VALIDATING THOSE SPECIFICATIONS AGAINST THE ITEM CONTROL SCHEDULE AND DESIGN PROVISIONS IN THE MODEL. THIS OFFICE ACCEPTS NO RESPONSIBILITY FOR THE PROCUREMENT OF SUBSTITUTE FF&E AND EQUIPMENT WHICH HAS NOT BEEN REVIEWED AND VALIDATED AGAINST THE ORIGINAL DESIGN PROVISIONS.

SERVICE POINTS DISCLAIMER
THE SERVICE POINTS IDENTIFIED ON THESE DRAWINGS HAVE BEEN OVERLAYED FROM THE BUILDING SERVICES ENGINEERING MODEL AND ARE PROVIDED FOR INFORMATION AND SET-OUT PURPOSES ONLY. WE HAVE BEEN ADVISED BY THE SERVICES ENGINEERS THAT THE POINTS REPRESENTED ON THESE DRAWINGS ARE CORRECT AT THE TIME OF PUBLICATION. THIS OFFICE DOES NOT WARRANT THE ACCURACY OF THIS DATA. REFER TO THE BUILDING SERVICES ENGINEERING DOCUMENTATION FOR THE INSTALLATION OF THE SERVICE POINTS, AND THE INTERFACE BETWEEN THE SERVICE POINTS AND THE RESPECTIVE ENGINEERING SYSTEMS.

ISSUED FOR INFORMATION
ARCHITECTS

STH BATESSMART.
M12147
43 BRISBANE STREET, SURRY HILLS NSW 2010
ABN: 60 094 740 986 PH: (02) 8354 5100
PH: (02) 8299 4600 FAX: (03) 9885 2455
E: syd@batesmart.com.au

THIS ARCHITECTURAL DESIGN IS THE COPYRIGHT OF SILVER THOMAS HANLEY AND BATES SMART AND SHALL NOT BE REPRODUCED WITHOUT THEIR WRITTEN PERMISSION

PROJECT MANAGER

TSA
MANAGEMENT

CLIENT

NSW Health
GOVERNMENT Infrastructure
Health Northern NSW
Local Health District

PROJECT

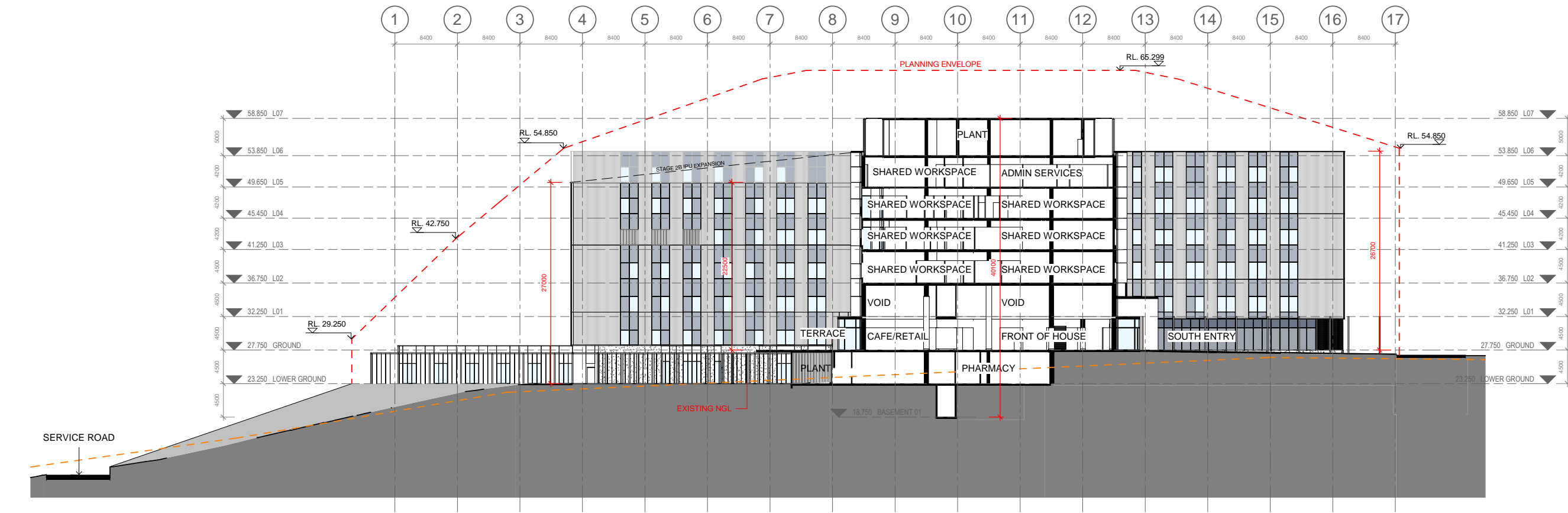
TWEED VALLEY HOSPITAL

DRAWING TITLE

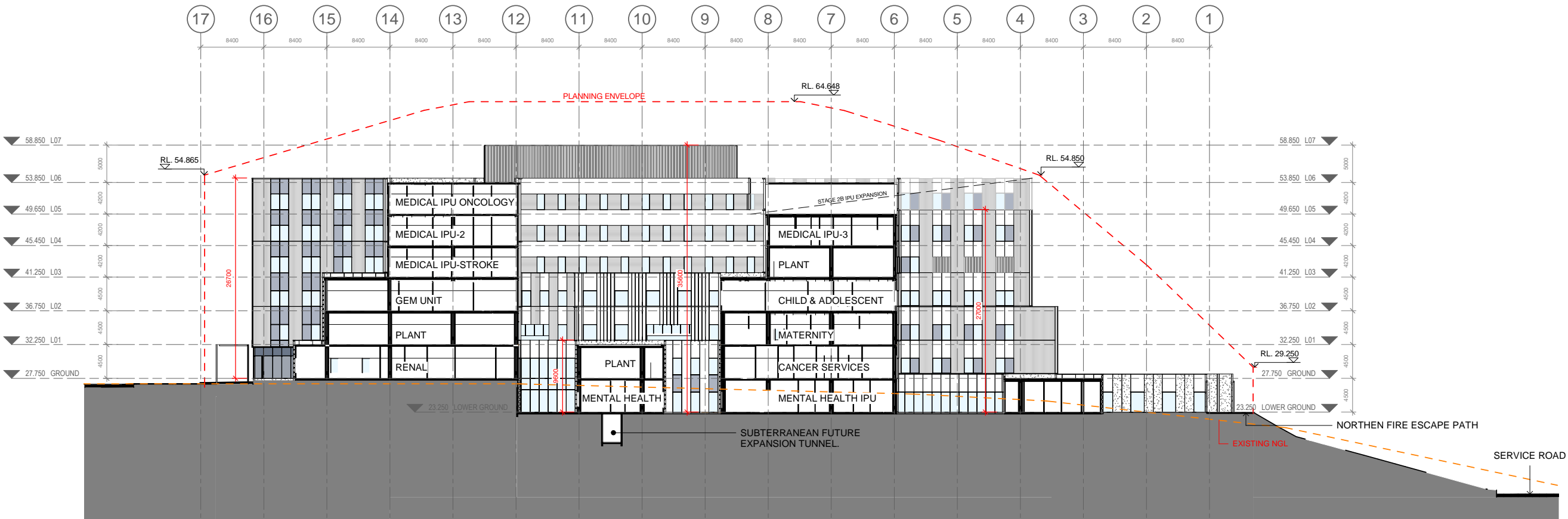
OVERALL BUILDING SECTIONS E & F

SCALE 1 : 300 @ A1 06/09/19 DRAWN BY BM CHECKED BS
1 : 600 @ A3

PROJECT No 10363 DRAWING No STB-AR-SKE-PRW-5000003 REVISION 1



1 Section G.
3D 1 : 300



2 Section H.
3D 1 : 300

KEY PLAN			
REV	DESCRIPTION	DRN	DATE
1	ISSUED FOR SS02	BM	06/09/19

COPYRIGHT
ALL RIGHTS RESERVED. THIS WORK IS COPYRIGHT AND CANNOT BE REPRODUCED OR COPIED IN ANY FORM OR BY ANY MEANS (GRAPHIC, ELECTRONIC OR MECHANICAL INCLUDING PHOTOCOPYING) WITHOUT THE WRITTEN PERMISSION OF THE PRINCIPAL UNDER THE TERMS OF THE CONTRACT. ANY LICENCE, EXPRESS OR IMPLIED, TO USE THE DOCUMENT FOR ANY PURPOSE WHATSOEVER IS RESTRICTED TO THE TERMS OF THE AGREEMENT OR IMPLIED AGREEMENT WITH THE PRINCIPAL UNDER THE TERMS OF THE CONTRACT.

DIMENSIONS
USE FIGURED DIMENSIONS. DO NOT SCALE. CONTRACTORS MUST VERIFY ALL DIMENSIONS ON THE SITE BEFORE COMMENCING ANY WORK OR MAKING ANY SHOP DRAWING WHICH MUST BE SUBMITTED AND REVIEWED BEFORE MANUFACTURE.

FIXTURES, FITTINGS & EQUIPMENT SPECIFICATIONS
SUBSTITUTE FF&E EQUIPMENT SPECIFICATIONS
THE FIT-OUT DESIGN AND DOCUMENTATION HAS BEEN COMPLETED ON THE BASIS OF FF&E AND EQUIPMENT ADVISED TO THIS OFFICE AT THE TIME OF BRIEFING THE DESIGN. THE DESIGN PROVISIONS FOR FF&E AND EQUIPMENT INCORPORATES SPATIAL ALLOCATIONS, SERVICING, LOADING AND ACCESS CLEARANCES AND WHERE APPROPRIATE SERVICES REQUIREMENTS, HAVING DUE REGARD FOR SURROUNDING FIXTURES AND FITTINGS. IT SHOULD BE NOTED THAT SUBSTITUTE FF&E OR EQUIPMENT WITH ALTERNATE SPECIFICATIONS SHOULD NOT BE PROCURED PRIOR TO VALIDATING THOSE SPECIFICATIONS AGAINST THE ITEM CONTROL SCHEDULE AND DESIGN PROVISIONS IN THE MODEL. THIS OFFICE ACCEPTS NO RESPONSIBILITY FOR THE PROCUREMENT OF SUBSTITUTE FF&E AND EQUIPMENT WHICH HAS NOT BEEN REVIEWED AND VALIDATED AGAINST THE ORIGINAL DESIGN PROVISIONS.

SERVICE POINTS DISCLAIMER
THE SERVICE POINTS IDENTIFIED ON THESE DRAWINGS HAVE BEEN OVERLAYED FROM THE BUILDING SERVICES ENGINEERING MODEL AND ARE PROVIDED FOR INFORMATION AND SET-OUT PURPOSES ONLY. WE HAVE BEEN ADVISED BY THE SERVICES ENGINEERS THAT THE POINTS REPRESENTED ON THESE DRAWINGS ARE CORRECT AT THE TIME OF PUBLICATION. THIS OFFICE DOES NOT WARRANT THE ACCURACY OF THIS DATA. REFER TO THE BUILDING SERVICES ENGINEERING DOCUMENTATION FOR THE INSTALLATION OF THE SERVICES POINTS, AND THE INTERFACE BETWEEN THE SERVICES POINTS AND THE RESPECTIVE ENGINEERING SYSTEMS.

ISSUED FOR INFORMATION

ARCHITECTS

STH BATESSMART.

ABN: 21 134 476 065
LEVEL 4, 88 YORK STREET
SYDNEY NSW 2000, AUSTRALIA
PH: (02) 8299 4600 FAX: (03) 9885 2455

M12147
43 BRISBANE STREET,
SURRY HILLS NSW 2010
ABN: 68 094 740 966 PH: (02) 8354 5100
E: syd@batesmart.com.au

THIS ARCHITECTURAL DESIGN IS THE COPYRIGHT OF SILVER THOMAS HANLEY AND BATES SMART AND SHALL NOT BE REPRODUCED WITHOUT THEIR WRITTEN PERMISSION

PROJECT MANAGER

TSA
MANAGEMENT

CLIENT

NSW Health
GOVERNMENT Infrastructure

Health Northern NSW
Local Health District

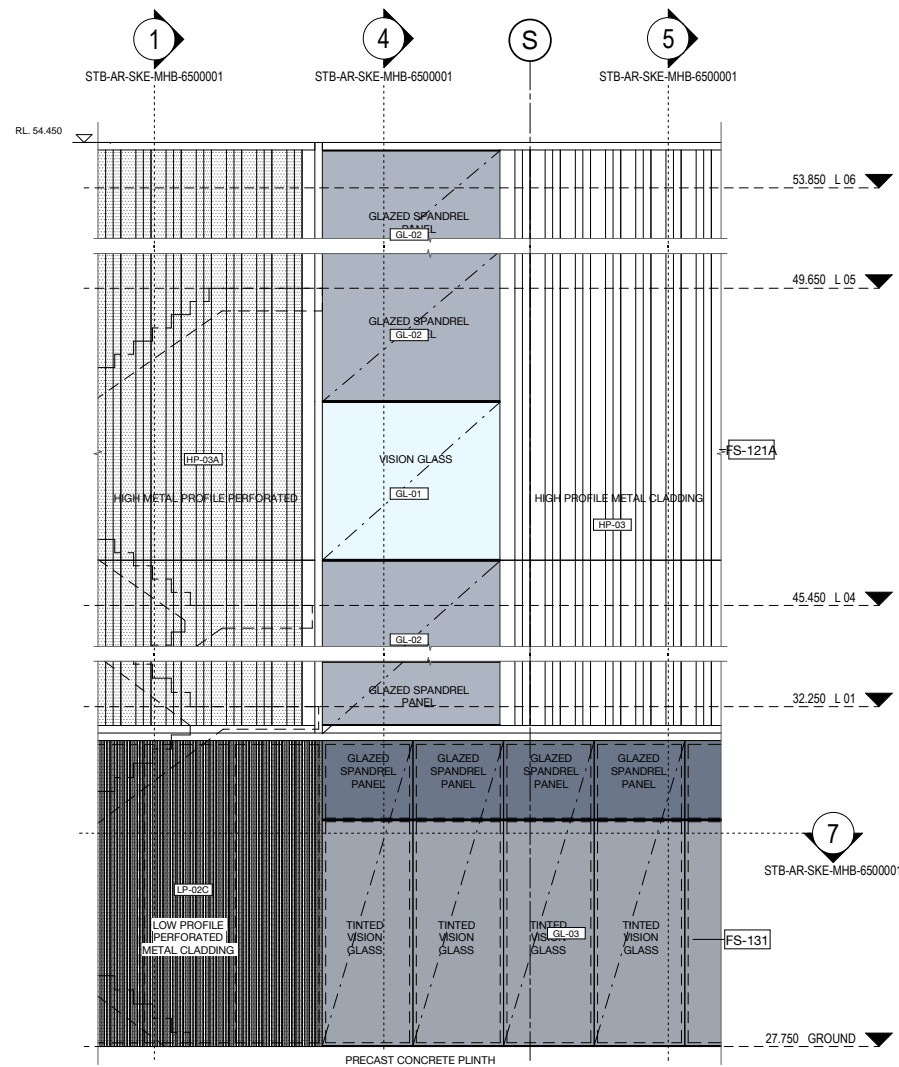
PROJECT

TWEED VALLEY HOSPITAL

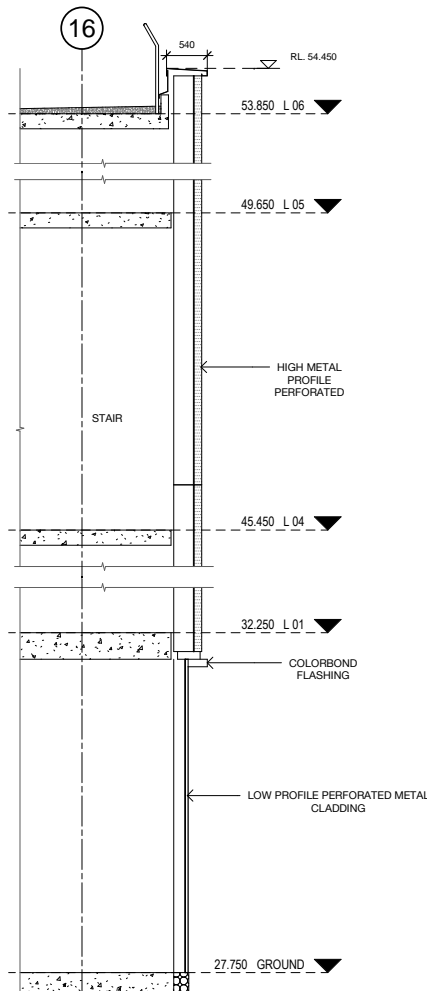
DRAWING TITLE

OVERALL BUILDING SECTIONS G & H

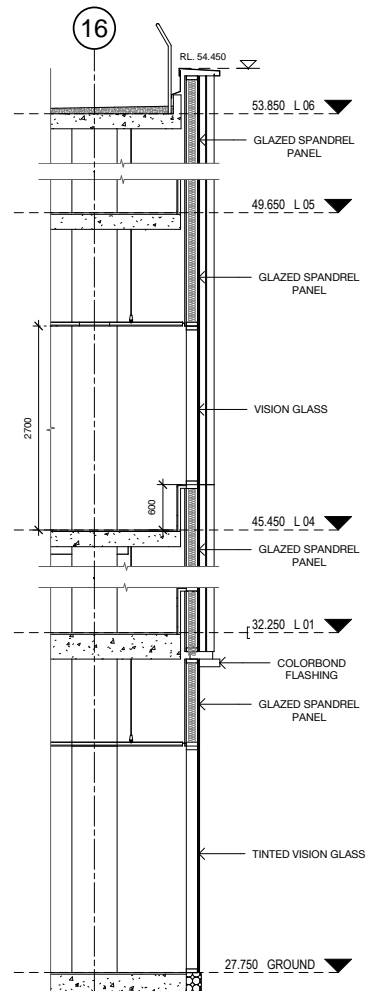
SCALE	DATE	DRAWN BY	CHECKED
1 : 300 @ A1	06/09/19	BM	BS
1 : 600 @ A3			
PROJECT No	DRAWING No	REVISION	
10363	STB-AR-SKE-PRW-5000004	1	



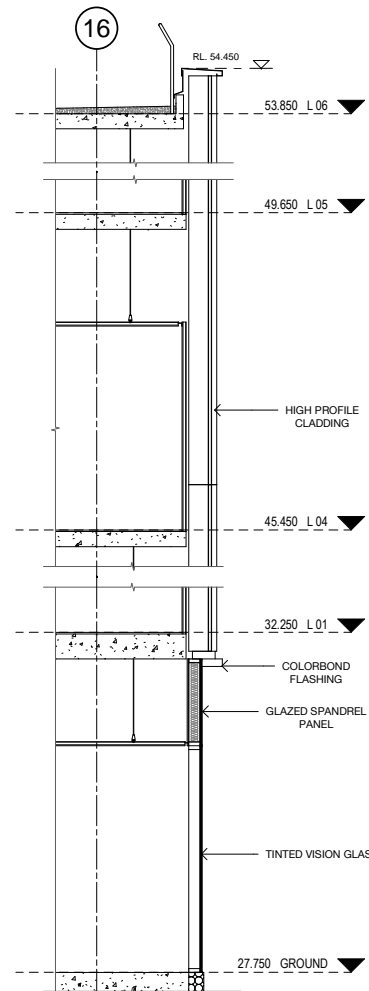
3 FS-121A / FS-131 - SSD
Elevation 1 : 50



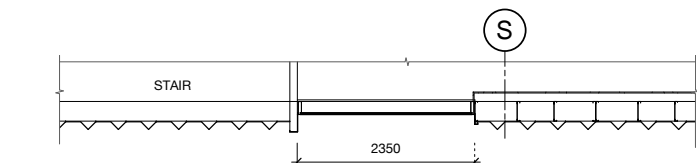
1 Section FS-121A / FS-131 - SSD
Section 1 : 50



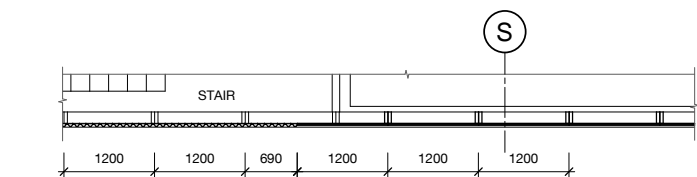
4 Section FS-121A / FS-131 (2) - SSD
Section 1 : 50



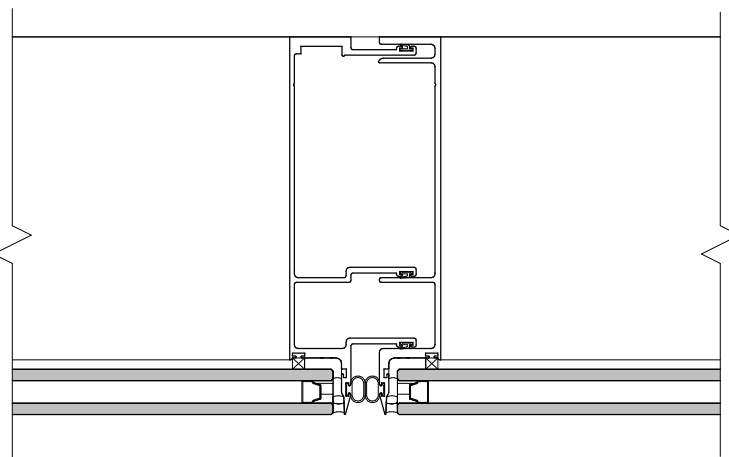
5 Section FS-121A / FS-131 (3) - SSD
Section 1 : 50



2 FS-121A - (SSD)
Elevation 1 : 50



7 FS-131 - (SSD)
Elevation 1 : 50



6 Detail Typical Mullion / Transom - SSD
1 : 2

FACADE TYPE LEGEND			
FS-111	PRECAST CONCRETE PANEL, PIGMENTED, OFF FORM FINISH, HIGH PERFORMANCE GLAZING ALUMINIUM MPC FRAME, SHADOWBOX SPANDREL GLASS OR ALUMINIUM FLAT PANEL MPC ALUMINIUM LOUVRES TO PLANT AREAS, MPC	FS-113	PRECAST CONCRETE PANEL, NON-PIGMENTED / BASEMENT WALL/SERVICE AREAS (NO GLAZING), ALUMINIUM LOUVRES TO PLANT AREAS, MPC
FS-112	PRECAST CONCRETE PANEL, NON-PIGMENTED, OFF FORM FINISH, HIGH PERFORMANCE GLAZING ALUMINIUM MPC FRAME, SHADOWBOX SPANDREL GLASS OR ALUMINIUM FLAT PANEL MPC ALUMINIUM LOUVRES TO PLANT AREAS, MPC	FS-121	LOW PROFILE METAL CLADDING, METALLIC COLORBOND, COLOUR TBC, WITH HIGH PERFORMANCE VISION GLASS AND SHADOWBOX SPANDREL GLASS IN POWDERCOAT ALUMINIUM FRAME MPC, ALUMINIUM LOUVRES TO PLANT AREAS, MPC
		FS-121A	GABLE END, HIGH PROFILE METAL CLADDING SOLID / PERFORATED TO OPEN STAIR, WITH HIGH PERFORMANCE VISION GLASS / SHADOWBOX SPANDREL GLASS IN POWDERCOAT ALUMINIUM FRAME MPC.
FS-122	LOW PROFILE METAL CLADDING, METALLIC COLORBOND, COLOUR TBC, WITH HIGH PERFORMANCE VISION GLASS AND ALTERNATING METAL SPANDREL MPC/ SHADOWBOX SPANDREL GLASS IN POWDERCOAT ALUMINIUM FRAME MPC, ALUMINIUM LOUVRES TO PLANT AREAS, MPC	FS-123	LOW PROFILE METAL CLADDING, METALLIC COLORBOND, COLOUR TBC, HIGH PERFORMANCE VISION GLASS / METAL SPANDREL MPC IN ALUMINIUM FRAME MPC, ALUMINIUM LOUVRES TO PLANT AREAS, MPC
FS-131	CURTAIN WALL FACADE: WITH HIGH PERFORMANCE VISION GLASS AND SHADOWBOX SPANDREL GLASS IN POWDERCOAT ALUMINIUM FRAME MPC, ALUMINIUM LOUVRES TO PLANT AREAS, MPC, INCLUDES AIRLOCKS AND METAL CLAD PORTAL	FS-141	PLANT SCREEN LOUVRE SYSTEM
FS-151	GROUND LEVEL CANOPIES TBC	FS-161	GLASS BALUSTRADES TBC
FS-162	VERTICAL CHEVRON LOUVRE SCREEN		

MPC = Metallic Powdercoat. Colour TBC.

FACADE FINISHES LEGEND

PC-01A	PRECAST CONCRETE PANEL, LIGHT BEIGE TINT, OFF FORM / SMOOTH	LP-01B	LOW PROFILE METAL CLADDING - SPANDEK, METALLIC COLORBOND - LIGHT, HORIZONTAL	AL-02	FLAT METAL CLADDING, METALLIC COLORBOND FINISH - MEDIUM
PC-01B	PRECAST CONCRETE PANEL, BEIGE TINT, OFF FORM / SMOOTH	LP-02B	LOW PROFILE METAL CLADDING - SPANDEK, METALLIC COLORBOND - MEDIUM, HORIZONTAL	AL-03	FLAT METAL CLADDING, METALLIC COLORBOND FINISH - WARM
PC-02A	PRECAST CONCRETE PANEL, LIGHT OCHRE TINT, OFF FORM / SMOOTH	LP-03B	LOW PROFILE METAL CLADDING - SPANDEK, METALLIC COLORBOND - WARM, HORIZONTAL	GL-01	HIGH PERFORMANCE VISION GLASS IN POWDERCOAT ALUMINIUM FRAME
PC-02B	PRECAST CONCRETE PANEL, OCHRE TINT, OFF FORM / SMOOTH	LP-02C	LOW PROFILE METAL CLADDING - SPANDEK - PERFORATED, METALLIC COLORBOND - MEDIUM, VERTICAL	GL-02	HIGH PERFORMANCE SPANDREL GLASS IN POWDERCOAT ALUMINIUM FRAME, SHADOWBOX
PC-03	PRECAST CONCRETE PANEL, NO TINT, OFF FORM / SMOOTH	HP-01	HIGH PROFILE METAL CLADDING, METALLIC COLORBOND FINISH - LIGHT, VERTICAL	GL-03	HIGH PERFORMANCE VISION GLASS IN POWDERCOAT ALUMINIUM FRAME, DARK TINT
LP-01	LOW PROFILE METAL CLADDING - SPANDEK, METALLIC COLORBOND - LIGHT, VERTICAL	HP-01A	HIGH PROFILE METAL CLADDING, PERFORATED, METALLIC COLORBOND FINISH - LIGHT, VERTICAL	GL-04	HIGH PERFORMANCE SPANDREL GLASS IN POWDERCOAT ALUMINIUM FRAME, SHADOWBOX, DARK TINT
LP-02	LOW PROFILE METAL CLADDING - SPANDEK, METALLIC COLORBOND - MEDIUM, VERTICAL	HP-02	HIGH PROFILE METAL CLADDING, METALLIC COLORBOND FINISH - MEDIUM, VERTICAL	LV-01	CHEVRON LOUVRE, METALLIC COLORBOND FINISH - LIGHT, VERTICAL
LP-03	LOW PROFILE METAL CLADDING - SPANDEK, METALLIC COLORBOND - WARM, VERTICAL	HP-02A	HIGH PROFILE METAL CLADDING, PERFORATED, METALLIC COLORBOND FINISH - MEDIUM, VERTICAL	LV-02	CHEVRON LOUVRE, METALLIC COLORBOND FINISH - MEDIUM, VERTICAL
LP-11	LOW PROFILE METAL CLADDING - ENSEAM, METALLIC COLORBOND - LIGHT, VERTICAL	HP-03	HIGH PROFILE METAL CLADDING, METALLIC COLORBOND FINISH - WARM, VERTICAL	LV-03	CHEVRON LOUVRE, METALLIC COLORBOND FINISH - WARM, VERTICAL
LP-12	LOW PROFILE METAL CLADDING - ENSEAM, METALLIC COLORBOND - MEDIUM, VERTICAL	HP-03A	HIGH PROFILE METAL CLADDING, PERFORATED, METALLIC COLORBOND FINISH - WARM, VERTICAL	BA-01	GLAZED BALLUSTRADE
LP-13	LOW PROFILE METAL CLADDING - ENSEAM, METALLIC COLORBOND - WARM, VERTICAL	AL-01	FLAT METAL CLADDING, METALLIC COLORBOND FINISH - LIGHT	BA-02	VERTICAL CHEVRON LOUVRE SCREEN - LOUVRECLAD 'ELLENBOROUGH'

KEY PLAN

REV DESCRIPTION DRN DATE
1 ISSUED FOR SSD 2 BM 06/09/19

COPYRIGHT

ALL RIGHTS RESERVED. THIS WORK IS COPYRIGHT AND CANNOT BE REPRODUCED OR COPIED IN ANY FORM OR BY ANY MEANS (GRAPHIC, ELECTRONIC OR MECHANICAL, INCLUDING PHOTOCOPYING) WITHOUT THE WRITTEN PERMISSION OF THE PRINCIPAL UNDER THE TERMS OF THE CONTRACT. ANY LICENCE, EXPRESS OR IMPLIED, TO USE THE DOCUMENT FOR ANY PURPOSE WHATSOEVER IS RESTRICTED TO THE TERMS OF THE AGREEMENT OR IMPLIED AGREEMENT WITH THE PRINCIPAL UNDER THE TERMS OF THE CONTRACT.

DIMENSIONS

USE FIGURED DIMENSIONS, DO NOT SCALE. CONTRACTORS MUST VERIFY ALL DIMENSIONS ON THE SITE BEFORE COMMENCING ANY WORK OR MAKING ANY SHOP DRAWING WHICH MUST BE SUBMITTED AND REVIEWED BEFORE MANUFACTURE.

FIXTURES, FITTINGS & EQUIPMENT SPECIFICATIONS

SUBSTITUTE FF&E EQUIPMENT SPECIFICATIONS
THE FIT-OUT DESIGN AND DOCUMENTATION HAS BEEN COMPLETED ON THE BASIS OF FF&E AND EQUIPMENT ADVISED TO THIS OFFICE AT THE TIME OF BRIEFING THE DESIGN. THE DESIGN PROVISIONS FOR FF&E AND EQUIPMENT INCORPORATES SPATIAL ALLOCATIONS, SERVICING, LOADING AND ACCESS CLEARANCES AND WHERE APPROPRIATE SERVICES REQUIREMENTS, HAVING DUE REGARD FOR SURROUNDING FIXTURES AND FITTINGS. IT SHOULD BE NOTED THAT SUBSTITUTE FF&E OR EQUIPMENT WITH ALTERNATE SPECIFICATIONS SHOULD NOT BE PROCURED PRIOR TO VALIDATING THOSE SPECIFICATIONS AGAINST THE ITEM CONTROL SCHEDULE AND DESIGN PROVISIONS IN THE MODEL. THIS OFFICE ACCEPTS NO RESPONSIBILITY FOR THE PROCUREMENT OF SUBSTITUTE FF&E AND EQUIPMENT WHICH HAS NOT BEEN REVIEWED AND VALIDATED AGAINST THE ORIGINAL DESIGN PROVISIONS.

SERVICE POINTS DISCLAIMER

THE SERVICE POINTS IDENTIFIED ON THESE DRAWINGS HAVE BEEN OVERLAYED FROM THE BUILDING SERVICES ENGINEERING MODEL, AND ARE PROVIDED FOR INFORMATION AND SET-OUT PURPOSES ONLY. WE HAVE BEEN ADVISED BY THE SERVICES ENGINEERS THAT THE POINTS REPRESENTED ON THESE DRAWINGS ARE CORRECT AT THE TIME OF PUBLICATION. THIS OFFICE DOES NOT WARRANT THE ACCURACY OF THIS DATA. REFER TO THE BUILDING SERVICES ENGINEERING DOCUMENTATION FOR THE INSTALLATION OF THE SERVICES POINTS, AND THE INTERFACE BETWEEN THE SERVICES POINTS AND THE RESPECTIVE ENGINEERING SYSTEMS.

ISSUED FOR INFORMATION

ARCHITECTS

STH BATESSMART.

M12147
43 BRISBANE STREET,
SURRY HILLS, NSW 2010
SYDNEY NSW 2000, AUSTRALIA
PH: (02) 8299 4600 FAX: (03) 9885 2455
E: syd@batesmart.com.au

43 BRISBANE STREET,
SURRY HILLS, NSW 2010
SYDNEY NSW 2000, AUSTRALIA
PH: (02) 8299 4600 FAX: (03) 9885 2455
E: syd@batesmart.com.au

THIS ARCHITECTURAL DESIGN IS THE COPYRIGHT OF SILVER THOMAS HANLEY AND BATES SMART AND SHALL NOT BE REPRODUCED WITHOUT THEIR WRITTEN PERMISSION

PROJECT MANAGER

TSA
MANAGEMENT

CLIENT

NSW GOVERNMENT

Health
Infrastructure

Health
Northern NSW
Local Health District

PROJECT

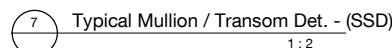
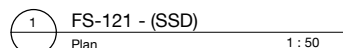
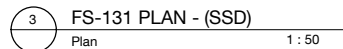
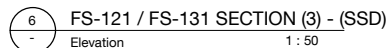
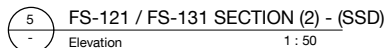
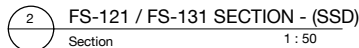
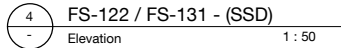
TWEED VALLEY HOSPITAL

DRAWING TITLE

FACADE SYSTEM FS-121A / FS-131

SCALE DATE DRAWN BY CHECKED
1 : 50 @ A1 06/09/19 CH BS
1 : 100 @ A3
PROJECT No DRAWING No REVISION
10363 STB-AR-SKE-MHB-6500001 1

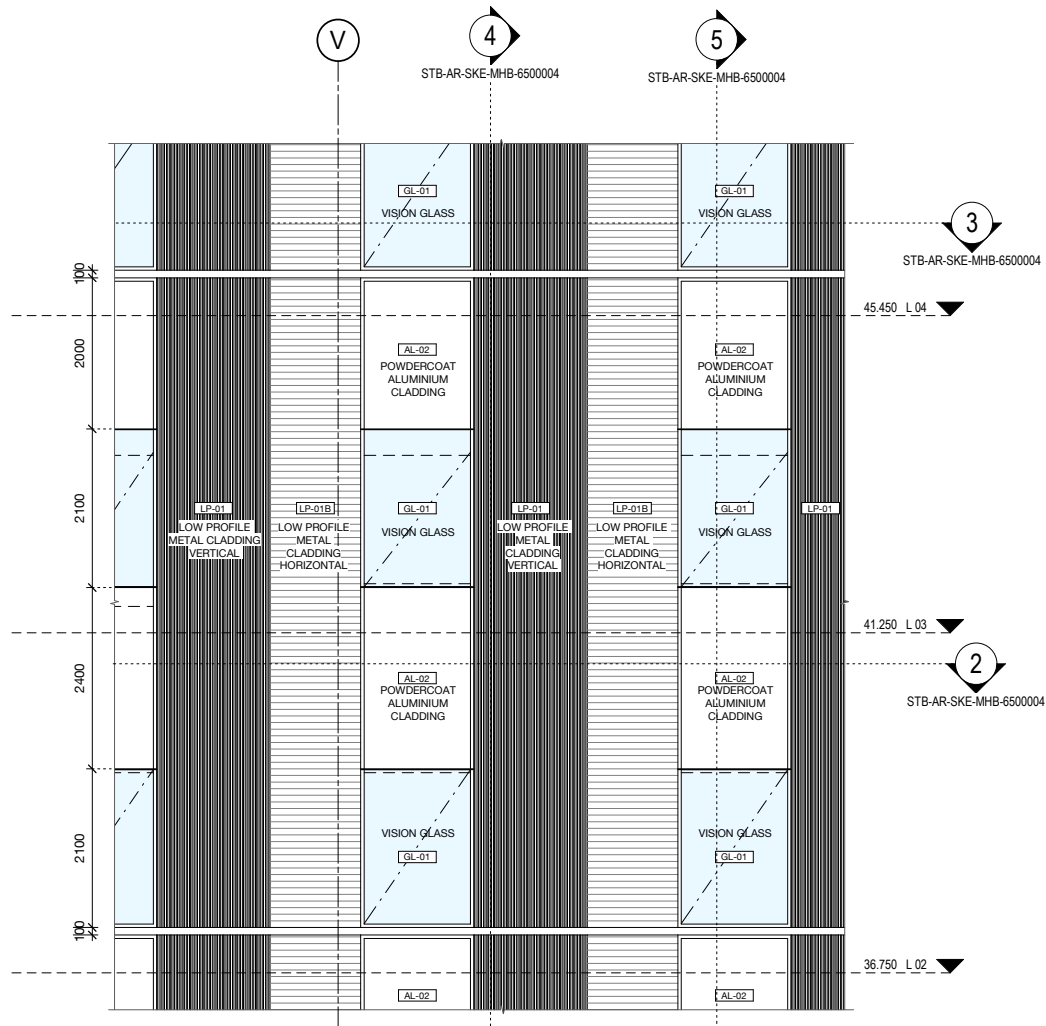
BSM 350/Tweed Valley Hospital/TVH_BS_FACADE_R2019.dwg



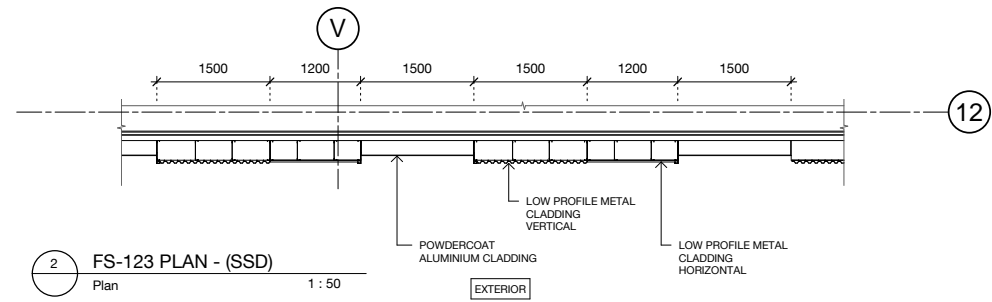
FACADE FINISHES LEGEND					
PC-01A	PRECAST CONCRETE PANEL. LIGHT BEIGE TINT. OFF FORM / SMOOTH	LP-01B	LOW PROFILE METAL CLADDING - SPANDEK. METALLIC COLORBOND - LIGHT. HORIZONTAL	AL-02	FLAT METAL CLADDING. METALLIC COLORBOND FINISH - MEDIUM
PC-01B	PRECAST CONCRETE PANEL. BEIGE TINT. OFF FORM / SMOOTH	LP-02B	LOW PROFILE METAL CLADDING - SPANDEK. METALLIC COLORBOND - MEDIUM. HORIZONTAL	GL-01	FLAT METAL CLADDING. METALLIC COLORBOND FINISH - WARM
PC-02A	PRECAST CONCRETE PANEL. LIGHT OCHRE TINT. OFF FORM / SMOOTH	LP-03B	LOW PROFILE METAL CLADDING - SPANDEK. METALLIC COLORBOND - WARM. HORIZONTAL	GL-01	HIGH PERFORMANCE VISION GLASS IN POWDERCOAT ALUMINIUM FRAME
PC-02B	PRECAST CONCRETE PANEL. OCHRE TINT. OFF FORM / SMOOTH	LP-02C	LOW PROFILE METAL CLADDING - SPANDEK - PERFORATED. METALLIC COLORBOND - MEDIUM. VERTICAL	GL-02	HIGH PERFORMANCE SPANDEK GLASS IN POWDERCOAT ALUMINIUM FRAME. SHADOWBOX
PC-03	PRECAST CONCRETE PANEL. NO TINT. OFF FORM / SMOOTH	HP-01	HIGH PROFILE METAL CLADDING. METALLIC COLORBOND FINISH - LIGHT. VERTICAL	GL-03	HIGH PERFORMANCE VISION GLASS IN POWDERCOAT ALUMINIUM FRAME. DARK TINT
LP-01	LOW PROFILE METAL CLADDING - SPANDEK. METALLIC COLORBOND - LIGHT. VERTICAL	HP-01A	HIGH PROFILE METAL CLADDING. PERFORATED. METALLIC COLORBOND FINISH - LIGHT. VERTICAL	GL-04	HIGH PERFORMANCE SPANDEK GLASS IN POWDERCOAT ALUMINIUM FRAME. SHADOWBOX. DARK TINT
LP-02	LOW PROFILE METAL CLADDING - SPANDEK. METALLIC COLORBOND - MEDIUM. VERTICAL	HP-02	HIGH PROFILE METAL CLADDING. METALLIC COLORBOND FINISH - MEDIUM. VERTICAL	LV-01	CHEVRON LOUVRE. METALLIC COLORBOND FINISH - LIGHT. VERTICAL
LP-03	LOW PROFILE METAL CLADDING - SPANDEK. METALLIC COLORBOND - WARM. VERTICAL	HP-02A	HIGH PROFILE METAL CLADDING. PERFORATED. METALLIC COLORBOND FINISH - MEDIUM. VERTICAL	LV-02	CHEVRON LOUVRE. METALLIC COLORBOND FINISH - MEDIUM. VERTICAL
LP-11	LOW PROFILE METAL CLADDING - ENSEAM. METALLIC COLORBOND - LIGHT. VERTICAL	HP-03	HIGH PROFILE METAL CLADDING. METALLIC COLORBOND FINISH - WARM. VERTICAL	LV-03	CHEVRON LOUVRE. METALLIC COLORBOND FINISH - WARM. VERTICAL
LP-12	LOW PROFILE METAL CLADDING - ENSEAM. METALLIC COLORBOND - MEDIUM. VERTICAL	HP-03A	HIGH PROFILE METAL CLADDING. PERFORATED. METALLIC COLORBOND FINISH - WARM. VERTICAL	BA-01	GLAZED BALLUSTRADE
LP-13	LOW PROFILE METAL CLADDING - ENSEAM. METALLIC COLORBOND - WARM. VERTICAL	AL-01	FLAT METAL CLADDING. METALLIC COLORBOND FINISH - LIGHT	BA-02	VERTICAL. CHEVRON LOUVRE SCREEN - LOUVRECLAD "ELLENBOROUGH"

[illegible]

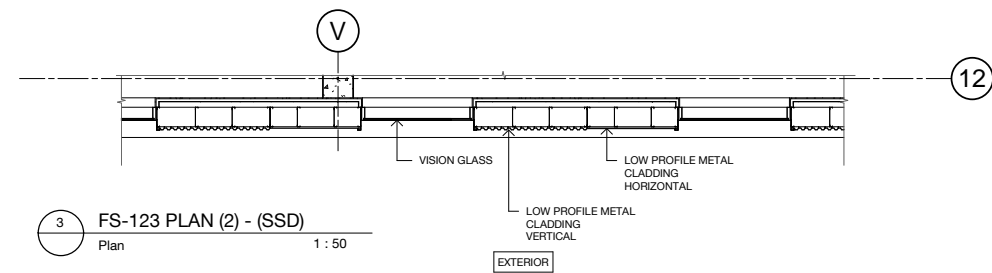
BIM 360://Tweed Valley Hospital/TVH_BS_FACADE_R2018.m



1 FS-123 - (SSD)
Elevation
1 : 50

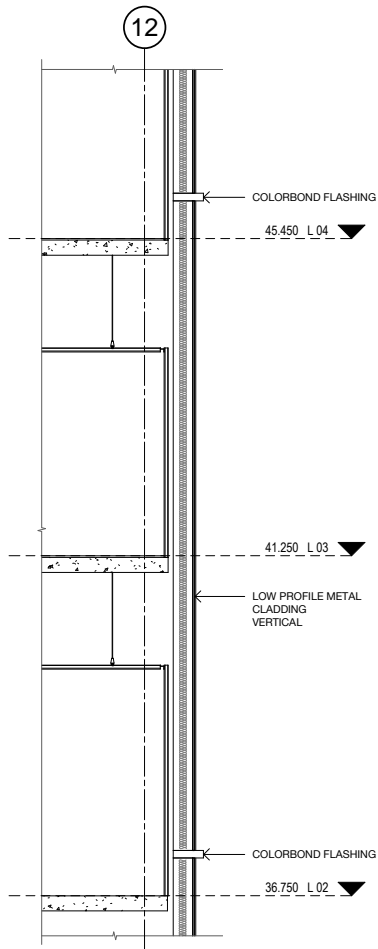


2 FS-123 PLAN - (SSD)
Plan
1 : 50

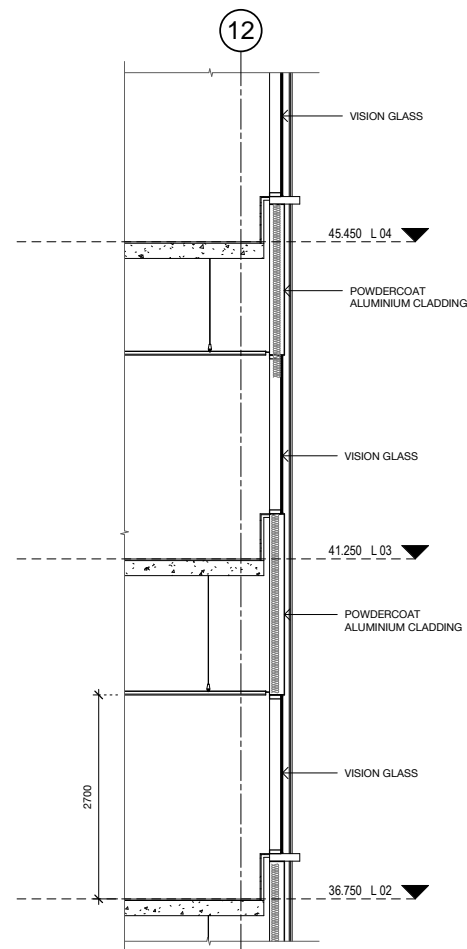


3 FS-123 PLAN (2) - (SSD)
Plan
1 : 50

FACADE TYPE LEGEND			
FS-111 PRECAST CONCRETE PANEL, PIGMENTED, OFF FORM FINISH, HIGH PERFORMANCE GLAZING ALUMINIUM MPC FRAME, SHADOWBOX SPANDREL GLASS OR ALUMINIUM FLAT PANEL, MPC ALUMINIUM LOUVRES TO PLANT AREAS, MPC	FS-113 PRECAST CONCRETE PANEL, NON-PIGMENTED / BASEMENT WALL/SERVICE AREAS (NO GLAZING), ALUMINIUM LOUVRES TO PLANT AREAS, MPC	FS-122 LOW PROFILE METAL CLADDING, METALLIC COLORBOND, COLOUR TBC. WITH HIGH PERFORMANCE VISION GLASS AND ALTERNATING METAL SPANDREL MPC/ SHADOWBOX SPANDREL GLASS IN POWDERCOAT ALUMINIUM FRAME MPC. ALUMINIUM LOUVRES TO PLANT AREAS, MPC	FS-131 CURTAIN WALL FACADE: WITH HIGH PERFORMANCE VISION GLASS AND SHADOWBOX SPANDREL GLASS IN POWDERCOAT ALUMINIUM FRAME MPC. ALUMINIUM LOUVRES TO PLANT AREAS, MPC. INCLUDES AIRLOCKS AND METAL CLAD PORTAL
FS-112 PRECAST CONCRETE PANEL, NON-PIGMENTED, OFF FORM FINISH, HIGH PERFORMANCE GLAZING ALUMINIUM MPC FRAME, SHADOWBOX SPANDREL GLASS OR ALUMINIUM FLAT PANEL, MPC. ALUMINIUM LOUVRES TO PLANT AREAS, MPC	FS-121 LOW PROFILE METAL CLADDING, METALLIC COLORBOND, COLOUR TBC. WITH HIGH PERFORMANCE VISION GLASS AND SHADOWBOX SPANDREL GLASS IN POWDERCOAT ALUMINIUM FRAME MPC. ALUMINIUM LOUVRES TO PLANT AREAS, MPC	FS-123 LOW PROFILE METAL CLADDING, METALLIC COLORBOND, COLOUR TBC. HIGH PERFORMANCE VISION GLAZING MPC / METAL SPANDREL MPC IN ALUMINIUM FRAME MPC. ALUMINIUM LOUVRES TO PLANT AREAS, MPC	FS-141 PLANT SCREEN LOUVRE SYSTEM FS-151 GROUND LEVEL CANOPES TBC FS-161 GLASS BALUSTRADES TBC FS-162 VERTICAL CHEVRON LOUVRE SCREEN
	FS-121A GABLE END: HIGH PROFILE METAL CLADDING SOLID / PERFORATED TO OPEN STAIR, WITH HIGH PERFORMANCE VISION GLASS / SHADOWBOX SPANDREL GLASS IN POWDERCOAT ALUMINIUM FRAME MPC.	FS-124 SILL TO CEILING WINDOW WALL, HIGH PERFORMANCE VISION GLASS / ALUMINIUM SPANDREL PANELS MPC. ALUMINIUM LOUVRES TO PLANT AREAS, MPC.	MPC = Metallic Powdercoat. Colour TBC.



4 FS-123 SECTION - (SSD)
Section
1 : 50



5 FS-123 SECTION (2) - (SSD)
Section
1 : 50

FACADE FINISHES LEGEND

PC-01A	PRECAST CONCRETE PANEL, LIGHT BEIGE TINT, OFF FORM / SMOOTH	LP-01B	LOW PROFILE METAL CLADDING - SPANDEK, METALLIC COLORBOND - LIGHT, HORIZONTAL	AL-02	FLAT METAL CLADDING, METALLIC COLORBOND FINISH - MEDIUM
PC-01B	PRECAST CONCRETE PANEL, BEIGE TINT, OFF FORM / SMOOTH	LP-02B	LOW PROFILE METAL CLADDING - SPANDEK, METALLIC COLORBOND - MEDIUM, HORIZONTAL	AL-03	FLAT METAL CLADDING, METALLIC COLORBOND FINISH - WARM
PC-02A	PRECAST CONCRETE PANEL, LIGHT OCHRE TINT, OFF FORM / SMOOTH	LP-03B	LOW PROFILE METAL CLADDING - SPANDEK, METALLIC COLORBOND - WARM, HORIZONTAL	GL-01	HIGH PERFORMANCE VISION GLASS IN POWDERCOAT ALUMINIUM FRAME
PC-02B	PRECAST CONCRETE PANEL, OCHRE TINT, OFF FORM / SMOOTH	LP-02C	LOW PROFILE METAL CLADDING - SPANDEK - PERFORATED, METALLIC COLORBOND - MEDIUM, VERTICAL	GL-02	HIGH PERFORMANCE SPANDREL GLASS IN POWDERCOAT ALUMINIUM FRAME; SHADOWBOX
PC-03	PRECAST CONCRETE PANEL, NO TINT, OFF FORM / SMOOTH	HP-01	HIGH PROFILE METAL CLADDING, METALLIC COLORBOND FINISH - LIGHT, VERTICAL	GL-03	HIGH PERFORMANCE VISION GLASS IN POWDERCOAT ALUMINIUM FRAME; DARK TINT
LP-01	LOW PROFILE METAL CLADDING - SPANDEK, METALLIC COLORBOND - LIGHT, VERTICAL	HP-01A	HIGH PROFILE METAL CLADDING, PERFORATED, METALLIC COLORBOND FINISH - LIGHT, VERTICAL	GL-04	HIGH PERFORMANCE SPANDREL GLASS IN POWDERCOAT ALUMINIUM FRAME; SHADOWBOX, DARK TINT
LP-02	LOW PROFILE METAL CLADDING - SPANDEK, METALLIC COLORBOND - MEDIUM, VERTICAL	HP-02	HIGH PROFILE METAL CLADDING, METALLIC COLORBOND FINISH - MEDIUM, VERTICAL	LV-01	CHEVRON LOUVRE, METALLIC COLORBOND FINISH - LIGHT, VERTICAL
LP-03	LOW PROFILE METAL CLADDING - SPANDEK, METALLIC COLORBOND - WARM, VERTICAL	HP-02A	HIGH PROFILE METAL CLADDING, PERFORATED, METALLIC COLORBOND FINISH - MEDIUM, VERTICAL	LV-02	CHEVRON LOUVRE, METALLIC COLORBOND FINISH - MEDIUM, VERTICAL
LP-11	LOW PROFILE METAL CLADDING - ENSEAM, METALLIC COLORBOND - LIGHT, VERTICAL	HP-03	HIGH PROFILE METAL CLADDING, METALLIC COLORBOND FINISH - WARM, VERTICAL	LV-03	CHEVRON LOUVRE, METALLIC COLORBOND FINISH - WARM, VERTICAL
LP-12	LOW PROFILE METAL CLADDING - ENSEAM, METALLIC COLORBOND - MEDIUM, VERTICAL	HP-03A	HIGH PROFILE METAL CLADDING, PERFORATED, METALLIC COLORBOND FINISH - WARM, VERTICAL	BA-01	GLAZED BALLUSTRADE
LP-13	LOW PROFILE METAL CLADDING - ENSEAM, METALLIC COLORBOND - WARM, VERTICAL	AL-01	FLAT METAL CLADDING, METALLIC COLORBOND FINISH - LIGHT	BA-02	VERTICAL CHEVRON LOUVRE SCREEN - LOUVRECLAD ELLENBOROUGH

KEY PLAN

REVDESCRIPTIONDRNDATE
1ISSUED FOR SSD 2BM06/09/19

COPYRIGHT

ALL RIGHTS RESERVED. THIS WORK IS COPYRIGHT AND CANNOT BE REPRODUCED OR COPIED IN ANY FORM OR BY ANY MEANS (GRAPHIC, ELECTRONIC OR MECHANICAL, INCLUDING PHOTOCOPYING) WITHOUT THE WRITTEN PERMISSION OF THE PRINCIPAL UNDER THE TERMS OF THE CONTRACT. ANY LICENCE, EXPRESS OR IMPLIED, TO USE THE DOCUMENT FOR ANY PURPOSE WHATSOEVER IS RESTRICTED TO THE TERMS OF THE AGREEMENT OR IMPLIED AGREEMENT WITH THE PRINCIPAL UNDER THE TERMS OF THE CONTRACT.

DIMENSIONS

USE FIGURED DIMENSIONS, DO NOT SCALE. CONTRACTORS MUST VERIFY ALL DIMENSIONS ON THE SITE BEFORE COMMENCING ANY WORK OR MAKING ANY SHOP DRAWING WHICH MUST BE SUBMITTED AND REVIEWED BEFORE MANUFACTURE.

FIXTURES, FITTINGS & EQUIPMENT SPECIFICATIONS

SUBSTITUTE FF&E EQUIPMENT SPECIFICATIONS
THE FIT-OUT DESIGN AND DOCUMENTATION HAS BEEN COMPLETED ON THE BASIS OF FF&E AND EQUIPMENT ADVISED TO THIS OFFICE AT THE TIME OF BRIEFING THE DESIGN. THE DESIGN PROVISIONS FOR FF&E AND EQUIPMENT INCORPORATES SPATIAL ALLOCATIONS, SERVICING, LOADING AND ACCESS CLEARANCES AND WHERE APPROPRIATE SERVICES REQUIREMENTS, HAVING DUE REGARD FOR SURROUNDING FIXTURES AND FITTINGS. IT SHOULD BE NOTED THAT SUBSTITUTE FF&E OR EQUIPMENT WITH ALTERNATE SPECIFICATIONS SHOULD NOT BE PROCURED PRIOR TO VALIDATING THOSE SPECIFICATIONS AGAINST THE ITEM CONTROL SCHEDULE AND DESIGN PROVISIONS IN THE MODEL. THIS OFFICE ACCEPTS NO RESPONSIBILITY FOR THE PROCUREMENT OF SUBSTITUTE FF&E AND EQUIPMENT WHICH HAS NOT BEEN REVIEWED AND VALIDATED AGAINST THE ORIGINAL DESIGN PROVISIONS.

SERVICE POINTS DISCLAIMER

THE SERVICE POINTS IDENTIFIED ON THESE DRAWINGS HAVE BEEN OVERLAYED FROM THE BUILDING SERVICES ENGINEERING MODEL, AND ARE PROVIDED FOR INFORMATION AND SET-OUT PURPOSES ONLY. WE HAVE BEEN ADVISED BY THE SERVICES ENGINEERS THAT THE POINTS REPRESENTED ON THESE DRAWINGS ARE CORRECT AT THE TIME OF PUBLICATION. THIS OFFICE DOES NOT WARRANT THE ACCURACY OF THIS DATA. REFER TO THE BUILDING SERVICES ENGINEERING DOCUMENTATION FOR THE INSTALLATION OF THE SERVICES POINTS, AND THE INTERFACE BETWEEN THE SERVICES POINTS AND THE RESPECTIVE ENGINEERING SYSTEMS.

ISSUED FOR INFORMATION

ARCHITECTS

STH

BATESSMART.

M12147
43 BRISBANE STREET,
SYDNEY NSW 2000, AUSTRALIA
PH: (02) 8299 4600 FAX: (03) 9885 2455
E: syd@batesmart.com.au

43 BRISBANE STREET,
SYDNEY NSW 2010
PH: (02) 8299 4600 FAX: (03) 9885 2455
E: syd@batesmart.com.au

THIS ARCHITECTURAL DESIGN IS THE COPYRIGHT OF SILVER THOMAS HANLEY AND BATES SMART AND SHALL NOT BE REPRODUCED WITHOUT THEIR WRITTEN PERMISSION

PROJECT MANAGER

TSA

MANAGEMENT

CLIENT

NSW

GOVERNMENT

Health

Infrastructure

Health

Northern NSW

Local Health District

PROJECT

TWEED VALLEY HOSPITAL

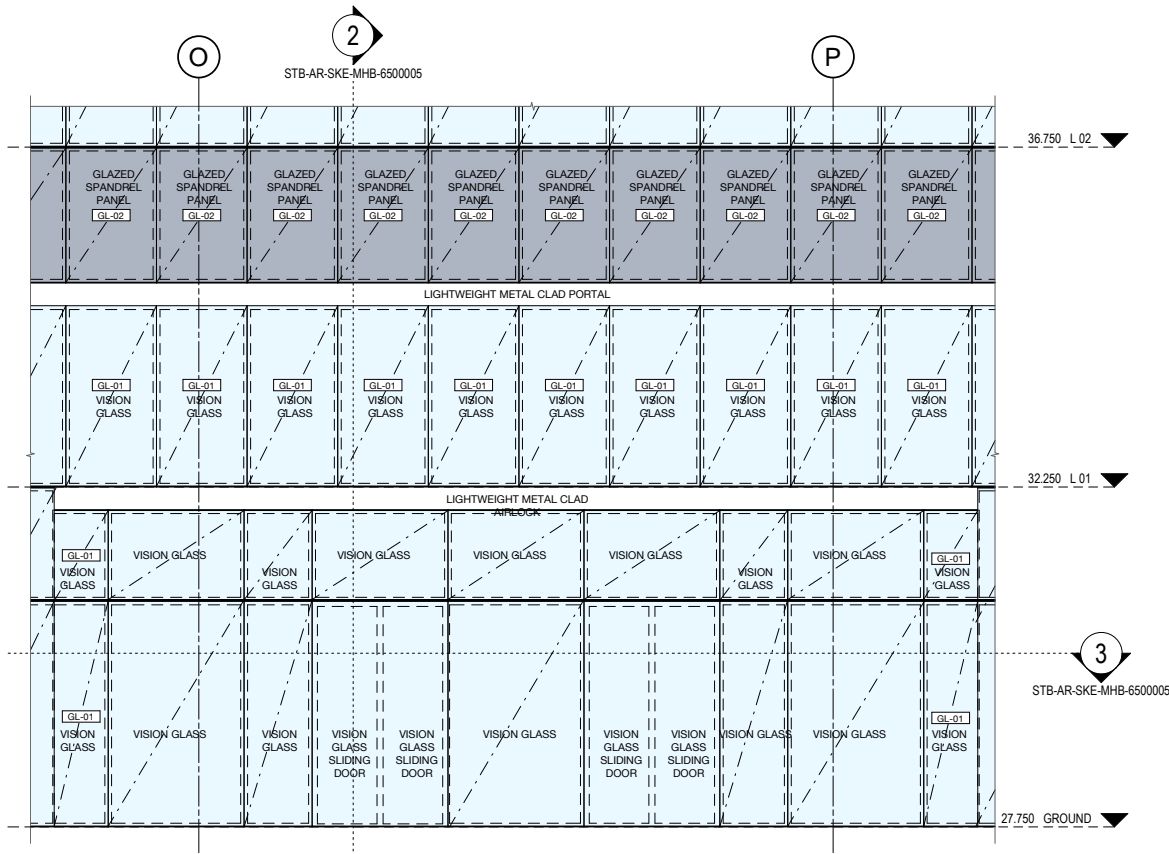
DRAWING TITLE

FACADE SYSTEM FS-123

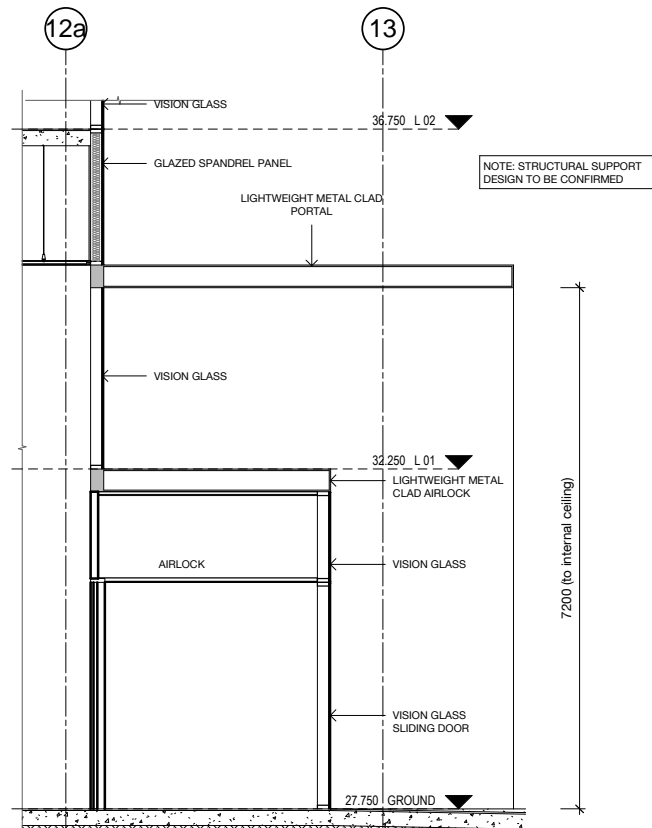
SCALEDATEDRAWN BYCHECKED
1:50@A106/09/19CHBS
1:100@A3

PROJECT NoDRAWING NoREVISION
10363STB-AR-SKE-MHB-65000041

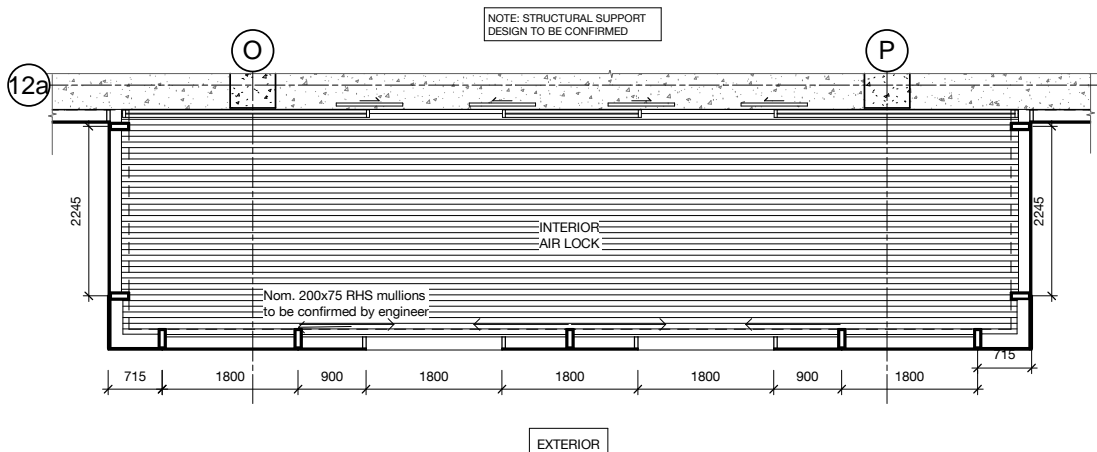
BSM 3360/Tweed Valley Hospital/TVH_BS_FACADE_R2019.01



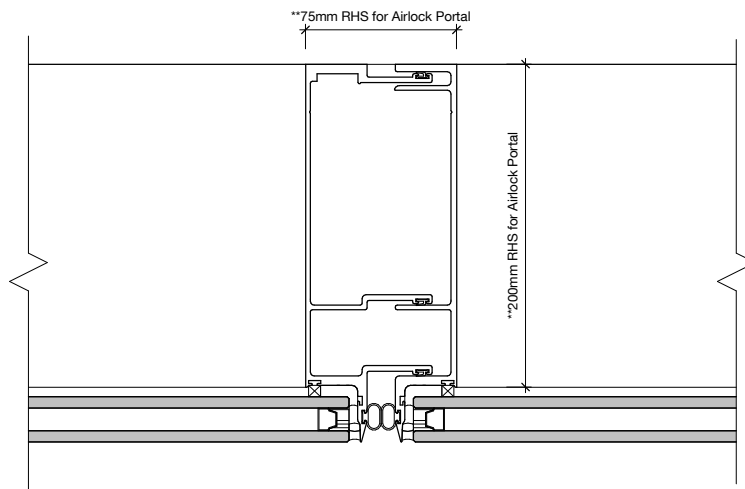
1 FS-131 MAIN ENTRY ELEVATION - (SSD)
Elevation 1 : 50



2 FS-131 SECTION - (SSD)
Section 1 : 50



3 FS-131 MAIN ENTRY PLAN - (SSD)
Plan 1 : 50



4 Typical Mullion / Transom above portal
Elevation 1 : 2

FAÇADE TYPE LEGEND

FS-111 PRECAST CONCRETE PANEL, PIGMENTED, OFF FORM FINISH, HIGH PERFORMANCE GLAZING ALUMINIUM MPC FRAME, SHADOWBOX SPANDREL GLASS OR ALUMINIUM FLAT PANEL MPC, ALUMINIUM LOUVRES TO PLANT AREAS, MPC	FS-113 PRECAST CONCRETE PANEL, NON-PIGMENTED / BASEMENT WALL/SERVICE AREAS (NO GLAZING), ALUMINIUM LOUVRES TO PLANT AREAS, MPC	FS-122 LOW PROFILE METAL CLADDING, METALLIC COLORBOND, COLOUR TBC, WITH HIGH PERFORMANCE VISION GLASS AND ALTERNATING METAL SPANDREL MPC/ SHADOWBOX SPANDREL GLASS IN POWDERCOAT ALUMINIUM FRAME MPC, ALUMINIUM LOUVRES TO PLANT AREAS, MPC	FS-131 CURTAIN WALL FAÇADE: WITH HIGH PERFORMANCE VISION GLASS AND SHADOWBOX SPANDREL GLASS IN POWDERCOAT ALUMINIUM FRAME MPC, ALUMINIUM LOUVRES TO PLANT AREAS, MPC, INCLUDES AIRLOCKS AND METAL CLAD PORTAL
FS-112 PRECAST CONCRETE PANEL, NON-PIGMENTED, OFF FORM FINISH, HIGH PERFORMANCE GLAZING ALUMINIUM MPC FRAME, SHADOWBOX SPANDREL GLASS OR ALUMINIUM FLAT PANEL MPC, ALUMINIUM LOUVRES TO PLANT AREAS, MPC	FS-121 LOW PROFILE METAL CLADDING, METALLIC COLORBOND, COLOUR TBC, WITH HIGH PERFORMANCE VISION GLASS AND SHADOWBOX SPANDREL GLASS IN POWDERCOAT ALUMINIUM FRAME MPC, ALUMINIUM LOUVRES TO PLANT AREAS, MPC	FS-123 LOW PROFILE METAL CLADDING, METALLIC COLORBOND, COLOUR TBC, HIGH PERFORMANCE VISION GLAZING MPC / METAL SPANDREL MPC IN ALUMINIUM FRAME MPC, ALUMINIUM LOUVRES TO PLANT AREAS, MPC	FS-141 PLANT SCREEN LOUVRE SYSTEM FS-151 GROUND LEVEL CANOPIES TBC FS-161 GLASS BALUSTRADES TBC FS-162 VERTICAL CHEVRON LOUVRE SCREEN
	FS-121A GABLE END, HIGH PROFILE METAL CLADDING SOLID / PERFORATED TO OPEN STAIR, WITH HIGH PERFORMANCE VISION GLASS / SHADOWBOX SPANDREL GLASS IN POWDERCOAT ALUMINIUM FRAME MPC.	FS-124 SILL TO CEILING WINDOW WALL, HIGH PERFORMANCE VISION GLASS / ALUMINIUM SPANDREL PANELS MPC, ALUMINIUM LOUVRES TO PLANT AREAS, MPC.	MPC = Metallic Powdercoat. Colour TBC.

FAÇADE FINISHES LEGEND

PC-01A PRECAST CONCRETE PANEL, LIGHT BEIGE TINT, OFF FORM / SMOOTH	LP-01B LOW PROFILE METAL CLADDING - SPANDEK, METALLIC COLORBOND - LIGHT, HORIZONTAL	AL-02 FLAT METAL CLADDING, METALLIC COLORBOND FINISH - MEDIUM
PC-01B PRECAST CONCRETE PANEL, BEIGE TINT, OFF FORM / SMOOTH	LP-02B LOW PROFILE METAL CLADDING - SPANDEK, METALLIC COLORBOND - MEDIUM, HORIZONTAL	AL-03 FLAT METAL CLADDING, METALLIC COLORBOND FINISH - WARM
PC-02A PRECAST CONCRETE PANEL, LIGHT OCHRE TINT, OFF FORM / SMOOTH	LP-03B LOW PROFILE METAL CLADDING - SPANDEK, METALLIC COLORBOND - WARM, HORIZONTAL	GL-01 HIGH PERFORMANCE VISION GLASS IN POWDERCOAT ALUMINIUM FRAME
PC-02B PRECAST CONCRETE PANEL, OCHRE TINT, OFF FORM / SMOOTH	LP-02C LOW PROFILE METAL CLADDING - SPANDEK - PERFORATED, METALLIC COLORBOND - MEDIUM, VERTICAL	GL-02 HIGH PERFORMANCE SPANDREL GLASS IN POWDERCOAT ALUMINIUM FRAME; SHADOWBOX
PC-03 PRECAST CONCRETE PANEL, NO TINT, OFF FORM / SMOOTH	HP-01 HIGH PROFILE METAL CLADDING, METALLIC COLORBOND FINISH - LIGHT, VERTICAL	GL-03 HIGH PERFORMANCE VISION GLASS IN POWDERCOAT ALUMINIUM FRAME, DARK TINT
LP-01 LOW PROFILE METAL CLADDING - SPANDEK, METALLIC COLORBOND - LIGHT, VERTICAL	HP-01A HIGH PROFILE METAL CLADDING, PERFORATED, METALLIC COLORBOND FINISH - LIGHT, VERTICAL	GL-04 HIGH PERFORMANCE SPANDREL GLASS IN POWDERCOAT ALUMINIUM FRAME; SHADOWBOX, DARK TINT
LP-02 LOW PROFILE METAL CLADDING - SPANDEK, METALLIC COLORBOND - MEDIUM, VERTICAL	HP-02 HIGH PROFILE METAL CLADDING, METALLIC COLORBOND FINISH - MEDIUM, VERTICAL	LV-01 CHEVRON LOUVRE, METALLIC COLORBOND FINISH - LIGHT, VERTICAL
LP-03 LOW PROFILE METAL CLADDING - SPANDEK, METALLIC COLORBOND - WARM, VERTICAL	HP-02A HIGH PROFILE METAL CLADDING, PERFORATED, METALLIC COLORBOND FINISH - MEDIUM, VERTICAL	LV-02 CHEVRON LOUVRE, METALLIC COLORBOND FINISH - MEDIUM, VERTICAL
LP-11 LOW PROFILE METAL CLADDING - ENSEAM, METALLIC COLORBOND - LIGHT, VERTICAL	HP-03 HIGH PROFILE METAL CLADDING, METALLIC COLORBOND FINISH - WARM, VERTICAL	LV-03 CHEVRON LOUVRE, METALLIC COLORBOND FINISH - WARM, VERTICAL
LP-12 LOW PROFILE METAL CLADDING - ENSEAM, METALLIC COLORBOND - MEDIUM, VERTICAL	HP-03A HIGH PROFILE METAL CLADDING, PERFORATED, METALLIC COLORBOND FINISH - WARM, VERTICAL	BA-01 GLAZED BALLUSTRADE
LP-13 LOW PROFILE METAL CLADDING - ENSEAM, METALLIC COLORBOND - WARM, VERTICAL	AL-01 FLAT METAL CLADDING, METALLIC COLORBOND FINISH - LIGHT	BA-02 VERTICAL CHEVRON LOUVRE SCREEN - LOUVRECLAD 'ELLENBOROUGH'

REV	DESCRIPTION	DRN	DATE
1	ISSUED FOR SSD 2	BM	06/09/19

COPYRIGHT
ALL RIGHTS RESERVED. THIS WORK IS COPYRIGHT AND CANNOT BE REPRODUCED OR COPIED IN ANY FORM OR BY ANY MEANS (GRAPHIC, ELECTRONIC OR MECHANICAL INCLUDING PHOTOCOPYING) WITHOUT THE WRITTEN PERMISSION OF THE PRINCIPAL UNDER THE TERMS OF THE CONTRACT. ANY LICENCE, EXPRESS OR IMPLIED, TO USE THE DOCUMENT FOR ANY PURPOSE WHATSOEVER IS RESTRICTED TO THE TERMS OF THE AGREEMENT OR IMPLIED AGREEMENT WITH THE PRINCIPAL UNDER THE TERMS OF THE CONTRACT.

DIMENSIONS
USE FIGURED DIMENSIONS, DO NOT SCALE. CONTRACTORS MUST VERIFY ALL DIMENSIONS ON THE SITE BEFORE COMMENCING ANY WORK OR MAKING ANY SHOP DRAWING WHICH MUST BE SUBMITTED AND REVIEWED BEFORE MANUFACTURE.

FIXTURES, FITTINGS & EQUIPMENT SPECIFICATIONS
SUBSTITUTE FF&E EQUIPMENT SPECIFICATIONS
THE FIT-OUT DESIGN AND DOCUMENTATION HAS BEEN COMPLETED ON THE BASIS OF FF&E AND EQUIPMENT ADVISED TO THIS OFFICE AT THE TIME OF BRIEFING THE DESIGN. THE DESIGN PROVISIONS FOR FF&E AND EQUIPMENT INCORPORATES SPATIAL ALLOCATIONS, SERVICES, LOADING AND ACCESS CLEARANCES AND WHERE APPROPRIATE SERVICES REQUIREMENTS, HAVING DUE REGARD FOR SURROUNDING FIXTURES AND FITTINGS. IT SHOULD BE NOTED THAT SUBSTITUTE FF&E OR EQUIPMENT WITH ALTERNATE SPECIFICATIONS SHOULD NOT BE PROCURED PRIOR TO VALIDATING THOSE SPECIFICATIONS AGAINST THE ITEM CONTROL SCHEDULE AND DESIGN PROVISIONS IN THE MODEL. THIS OFFICE ACCEPTS NO RESPONSIBILITY FOR THE PROCUREMENT OF SUBSTITUTE FF&E AND EQUIPMENT WHICH HAS NOT BEEN REVIEWED AND VALIDATED AGAINST THE ORIGINAL DESIGN PROVISIONS.

SERVICE POINTS DISCLAIMER
THE SERVICE POINTS IDENTIFIED ON THESE DRAWINGS HAVE BEEN OVERLAYED FROM THE BUILDING SERVICES ENGINEERING MODEL AND ARE PROVIDED FOR INFORMATION AND SET-OUT PURPOSES ONLY. WE HAVE BEEN ADVISED BY THE SERVICES ENGINEERS THAT THE POINTS REPRESENTED ON THESE DRAWINGS ARE CORRECT AT THE TIME OF PUBLICATION. THIS OFFICE DOES NOT WARRANT THE ACCURACY OF THIS DATA. REFER TO THE BUILDING SERVICES ENGINEERING DOCUMENTATION FOR THE INSTALLATION OF THE SERVICES POINTS, AND THE INTERFACE BETWEEN THE SERVICES POINTS AND THE RESPECTIVE ENGINEERING SYSTEMS.

ISSUED FOR INFORMATION

ARCHITECTS

STH BATESSMART.

M12147
43 BRISBANE STREET,
SUITE 4, 88 YORK STREET
SYDNEY NSW 2000, AUSTRALIA
PH: (02) 8299 4600 FAX: (03) 9885 2405
E: syd@batesmart.com.au

THIS ARCHITECTURAL DESIGN IS THE COPYRIGHT OF SILVER THOMAS HANLEY AND BATES SMART AND SHALL NOT BE REPRODUCED WITHOUT THEIR WRITTEN PERMISSION

PROJECT MANAGER

TSA
MANAGEMENT

CLIENT

NSW **Health** **Health**
GOVERNMENT Infrastructure Northern NSW
Local Health District

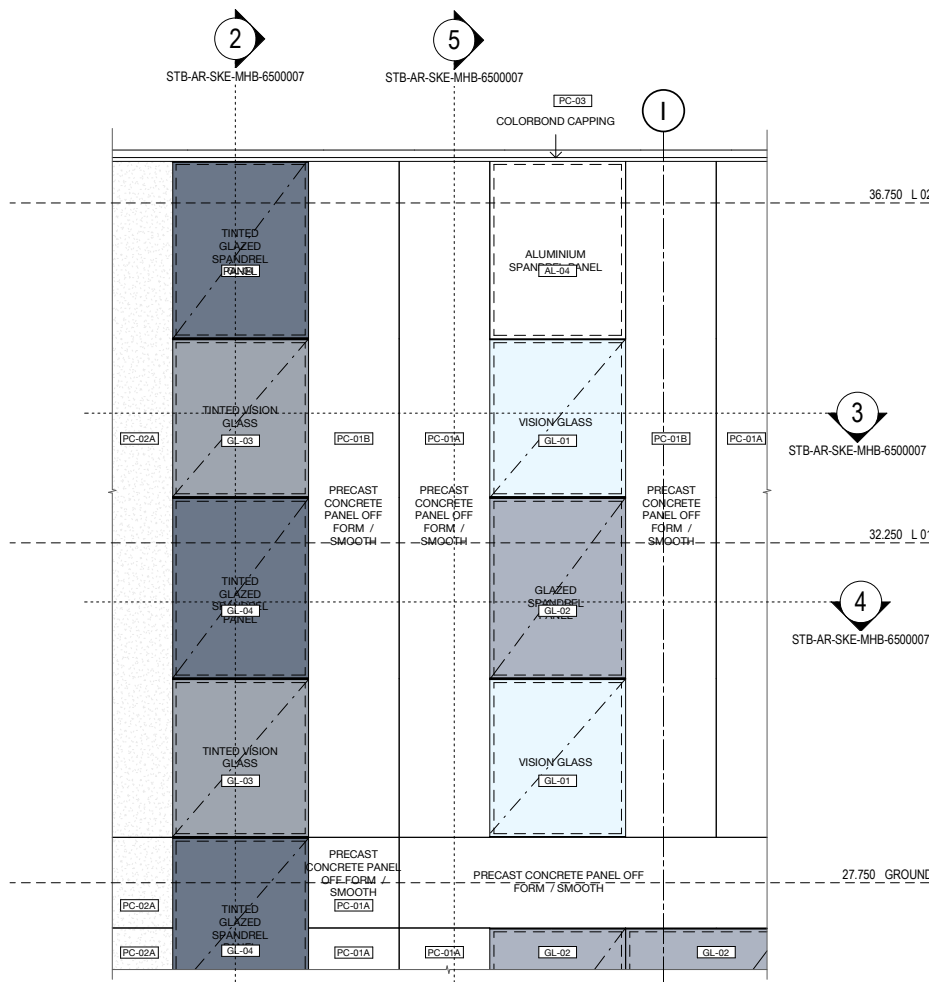
PROJECT

TWEED VALLEY HOSPITAL

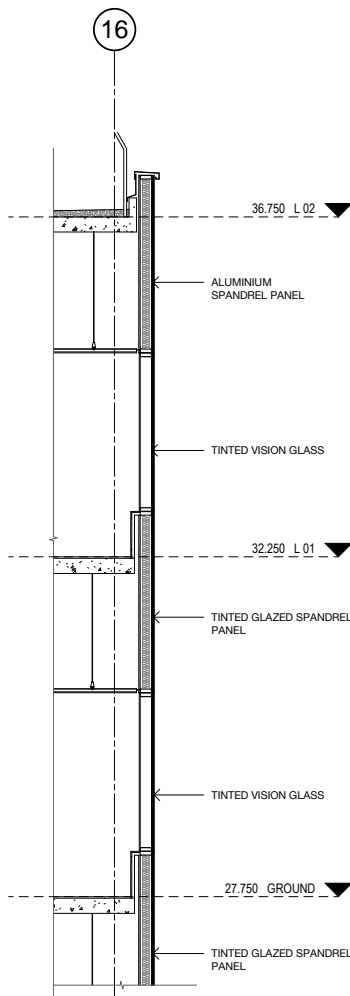
DRAWING TITLE

FAÇADE SYSTEM FS-131

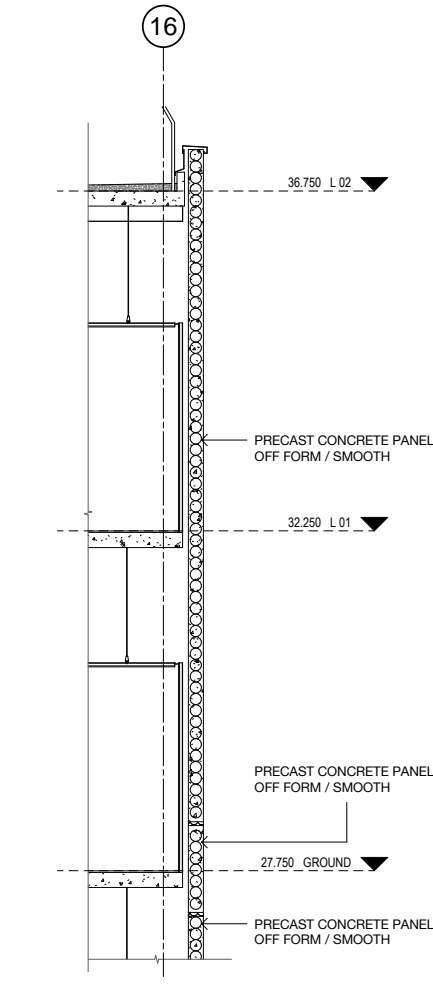
SCALE 1 : 50 @ A1 1 : 100 @ A3 DATE 06/09/19 DRAWN BY CH CHECKED BS PROJECT No 10363 DRAWING No STB-AR-SKE-MHB-6500005 REVISION 1



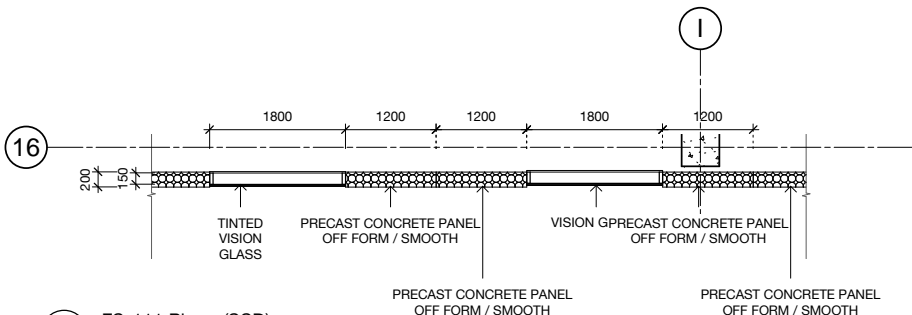
1 FS-111 - (SSD)
Elevation 1 : 50



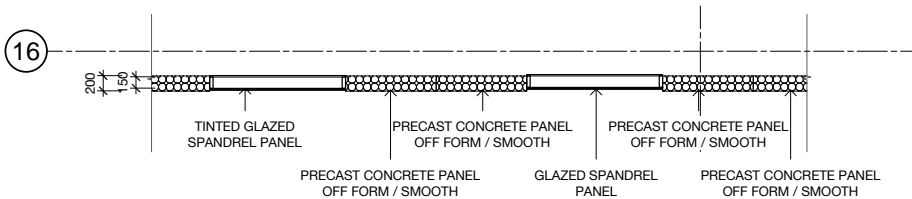
2 FS-111 Section - (SSD)
Section 1 : 50



5 FS-111 Section (2) - (SSD)
Elevation 1 : 50



3 FS-111 Plan - (SSD)
Plan 1 : 50



4 FS-111 Plan (2) - (SSD)
Plan 1 : 50

FACADE TYPE LEGEND

FS-111 PRECAST CONCRETE PANEL. PIGMENTED, OFF FORM FINISH. HIGH PERFORMANCE GLAZING ALUMINIUM MPC FRAME, SHADOWBOX SPANDREL GLASS OR ALUMINIUM FLAT PANEL MPC. ALUMINIUM LOUVRES TO PLANT AREAS, MPC	FS-113 PRECAST CONCRETE PANEL. NON-PIGMENTED / BASEMENT WALL/SERVICE AREAS (NO GLAZING), ALUMINIUM LOUVRES TO PLANT AREAS, MPC	FS-122 LOW PROFILE METAL CLADDING. METALLIC COLORBOND, COLOUR TBC. WITH HIGH PERFORMANCE VISION GLASS AND ALTERNATING METAL SPANDREL MPC/ SHADOWBOX SPANDREL GLASS IN POWDERCOAT ALUMINIUM FRAME MPC. ALUMINIUM LOUVRES TO PLANT AREAS, MPC	FS-131 CURTAIN WALL FACADE: WITH HIGH PERFORMANCE VISION GLASS AND SHADOWBOX SPANDREL GLASS IN POWDERCOAT ALUMINIUM FRAME MPC. ALUMINIUM LOUVRES TO PLANT AREAS, MPC
FS-112 PRECAST CONCRETE PANEL. NON-PIGMENTED, OFF FORM FINISH. HIGH PERFORMANCE GLAZING ALUMINIUM MPC FRAME, SHADOWBOX SPANDREL GLASS OR ALUMINIUM FLAT PANEL MPC. ALUMINIUM LOUVRES TO PLANT AREAS, MPC	FS-121 LOW PROFILE METAL CLADDING. METALLIC COLORBOND, COLOUR TBC. WITH HIGH PERFORMANCE VISION GLASS AND SHADOWBOX SPANDREL GLASS IN POWDERCOAT ALUMINIUM FRAME MPC. ALUMINIUM LOUVRES TO PLANT AREAS, MPC	FS-123 LOW PROFILE METAL CLADDING. METALLIC COLORBOND, COLOUR TBC. HIGH PERFORMANCE VISION GLAZING MPC /METAL SPANDREL MPC IN ALUMINIUM FRAME MPC. ALUMINIUM LOUVRES TO PLANT AREAS, MPC	FS-151 GROUND LEVEL CANOPIES TBC
	FS-121A GABLE END: HIGH PROFILE METAL CLADDING SOLID / PERFORATED TO OPEN STAIR. WITH HIGH PERFORMANCE VISION GLASS / SHADOWBOX SPANDREL GLASS IN POWDERCOAT ALUMINIUM FRAME MPC.	FS-124 SILL TO CEILING WINDOW WALL. HIGH PERFORMANCE VISION GLASS / ALUMINIUM SPANDREL PANELS MPC. ALUMINIUM LOUVRES TO PLANT AREAS, MPC.	FS-162 VERTICAL CHEVRON LOUVRE SCREEN

MPC = Metallic Powdercoat. Colour TBC.

FACADE FINISHES LEGEND

PC-01A PRECAST CONCRETE PANEL. LIGHT BEIGE TINT. OFF FORM / SMOOTH	LP-01B LOW PROFILE METAL CLADDING - SPANDEK. METALLIC COLORBOND - LIGHT. HORIZONTAL	AL-02 FLAT METAL CLADDING. METALLIC COLORBOND FINISH - MEDIUM
PC-01B PRECAST CONCRETE PANEL. BEIGE TINT. OFF FORM / SMOOTH	LP-02B LOW PROFILE METAL CLADDING - SPANDEK. METALLIC COLORBOND - MEDIUM. HORIZONTAL	AL-03 FLAT METAL CLADDING. METALLIC COLORBOND FINISH - WARM
PC-02A PRECAST CONCRETE PANEL. LIGHT OCHRE TINT. OFF FORM / SMOOTH	LP-03B LOW PROFILE METAL CLADDING - SPANDEK. METALLIC COLORBOND - WARM. HORIZONTAL	GL-01 HIGH PERFORMANCE VISION GLASS IN POWDERCOAT ALUMINIUM FRAME
PC-02B PRECAST CONCRETE PANEL. OCHRE TINT. OFF FORM / SMOOTH	LP-02C LOW PROFILE METAL CLADDING - SPANDEK - PERFORATED. METALLIC COLORBOND - MEDIUM. VERTICAL	GL-02 HIGH PERFORMANCE SPANDREL GLASS IN POWDERCOAT ALUMINIUM FRAME; SHADOWBOX
PC-03 PRECAST CONCRETE PANEL. NO TINT. OFF FORM / SMOOTH	HP-01 HIGH PROFILE METAL CLADDING. METALLIC COLORBOND FINISH - LIGHT. VERTICAL	GL-03 HIGH PERFORMANCE VISION GLASS IN POWDERCOAT ALUMINIUM FRAME. DARK TINT
LP-01 LOW PROFILE METAL CLADDING - SPANDEK. METALLIC COLORBOND - LIGHT. VERTICAL	HP-01A HIGH PROFILE METAL CLADDING. PERFORATED. METALLIC COLORBOND FINISH - LIGHT. VERTICAL	GL-04 HIGH PERFORMANCE SPANDREL GLASS IN POWDERCOAT ALUMINIUM FRAME; SHADOWBOX. DARK TINT
LP-02 LOW PROFILE METAL CLADDING - SPANDEK. METALLIC COLORBOND - MEDIUM. VERTICAL	HP-02 HIGH PROFILE METAL CLADDING. METALLIC COLORBOND FINISH - MEDIUM. VERTICAL	LV-01 CHEVRON LOUVRE. METALLIC COLORBOND FINISH - LIGHT. VERTICAL
LP-03 LOW PROFILE METAL CLADDING - SPANDEK. METALLIC COLORBOND - WARM. VERTICAL	HP-02A HIGH PROFILE METAL CLADDING. PERFORATED. METALLIC COLORBOND FINISH - MEDIUM. VERTICAL	LV-02 CHEVRON LOUVRE. METALLIC COLORBOND FINISH - MEDIUM. VERTICAL
LP-11 LOW PROFILE METAL CLADDING - ENSEAM. METALLIC COLORBOND - LIGHT. VERTICAL	HP-03 HIGH PROFILE METAL CLADDING. METALLIC COLORBOND FINISH - WARM. VERTICAL	LV-03 CHEVRON LOUVRE. METALLIC COLORBOND FINISH - WARM. VERTICAL
LP-12 LOW PROFILE METAL CLADDING - ENSEAM. METALLIC COLORBOND - MEDIUM. VERTICAL	HP-03A HIGH PROFILE METAL CLADDING. PERFORATED. METALLIC COLORBOND FINISH - WARM. VERTICAL	BA-01 GLAZED BALLUSTRADE
LP-13 LOW PROFILE METAL CLADDING - ENSEAM. METALLIC COLORBOND - WARM. VERTICAL	AL-01 FLAT METAL CLADDING. METALLIC COLORBOND FINISH - LIGHT	BA-02 VERTICAL CHEVRON LOUVRE SCREEN - LOUVRECLAD ELLENBOROUGH

REV	DESCRIPTION	DRN	DATE
1	ISSUED FOR SSD 2	BM	06/09/19

COPYRIGHT
ALL RIGHTS RESERVED. THIS WORK IS COPYRIGHT AND CANNOT BE REPRODUCED OR COPIED IN ANY FORM OR BY ANY MEANS (GRAPHIC, ELECTRONIC OR MECHANICAL INCLUDING PHOTOCOPYING) WITHOUT THE WRITTEN PERMISSION OF THE PRINCIPAL UNDER THE TERMS OF THE CONTRACT. ANY LICENCE, EXPRESS OR IMPLIED, TO USE THE DOCUMENT FOR ANY PURPOSE WHATSOEVER IS RESTRICTED TO THE TERMS OF THE AGREEMENT OR IMPLIED AGREEMENT WITH THE PRINCIPAL UNDER THE TERMS OF THE CONTRACT.

DIMENSIONS
USE FIGURED DIMENSIONS. DO NOT SCALE. CONTRACTORS MUST VERIFY ALL DIMENSIONS ON THE SITE BEFORE COMMENCING ANY WORK OR MAKING ANY SHOP DRAWING WHICH MUST BE SUBMITTED AND REVIEWED BEFORE MANUFACTURE.

FIXTURES, FITTINGS & EQUIPMENT SPECIFICATIONS
SUBSTITUTE FF&E EQUIPMENT SPECIFICATIONS
THE FIT-OUT DESIGN AND DOCUMENTATION HAS BEEN COMPLETED ON THE BASIS OF FF&E AND EQUIPMENT ADVISED TO THIS OFFICE AT THE TIME OF BRIEFING THE DESIGN. THE DESIGN PROVISIONS FOR FF&E AND EQUIPMENT INCORPORATES SPATIAL ALLOCATIONS, SERVICING, LOADING AND ACCESS CLEARANCES AND WHERE APPROPRIATE SERVICES REQUIREMENTS, HAVING DUE REGARD FOR SURROUNDING FIXTURES AND FITTINGS. IT SHOULD BE NOTED THAT SUBSTITUTE FF&E OR EQUIPMENT WITH ALTERNATE SPECIFICATIONS SHOULD NOT BE PROCURED PRIOR TO VALIDATING THOSE SPECIFICATIONS AGAINST THE ITEM CONTROL SCHEDULE AND DESIGN PROVISIONS IN THE MODEL. THIS OFFICE ACCEPTS NO RESPONSIBILITY FOR THE PROCUREMENT OF SUBSTITUTE FF&E AND EQUIPMENT WHICH HAS NOT BEEN REVIEWED AND VALIDATED AGAINST THE ORIGINAL DESIGN PROVISIONS.

SERVICE POINTS DISCLAIMER
THE SERVICE POINTS IDENTIFIED ON THESE DRAWINGS HAVE BEEN OVERLAYED FROM THE BUILDING SERVICES ENGINEERING MODEL AND ARE PROVIDED FOR INFORMATION AND SET-OUT PURPOSES ONLY. WE HAVE BEEN ADVISED BY THE SERVICES ENGINEERS THAT THE POINTS REPRESENTED ON THESE DRAWINGS ARE CORRECT AT THE TIME OF PUBLICATION. THIS OFFICE DOES NOT WARRANT THE ACCURACY OF THIS DATA. REFER TO THE BUILDING SERVICES ENGINEERING DOCUMENTATION FOR THE INSTALLATION OF THE SERVICES POINTS, AND THE INTERFACE BETWEEN THE SERVICES POINTS AND THE RESPECTIVE ENGINEERING SYSTEMS.

ISSUED FOR INFORMATION

ARCHITECTS

STH

BATESSMART.

ABN: 21 134 476 065
LEVEL 4, 89 YORK STREET
SYDNEY NSW 2000, AUSTRALIA
PH: (02) 8299 4600 FAX: (03) 9885 2455

M12147

43 BRISBANE STREET,
SUNSHINE HILLS NSW 2010
ABN: 66 054 740 966 PH: (02) 854 5100
E: syd@batesmart.com.au

THIS ARCHITECTURAL DESIGN IS THE COPYRIGHT OF SILVER THOMAS HANLEY AND BATES SMART AND SHALL NOT BE REPRODUCED WITHOUT THEIR WRITTEN PERMISSION

PROJECT MANAGER

CLIENT

PROJECT

TWEED VALLEY HOSPITAL

DRAWING TITLE

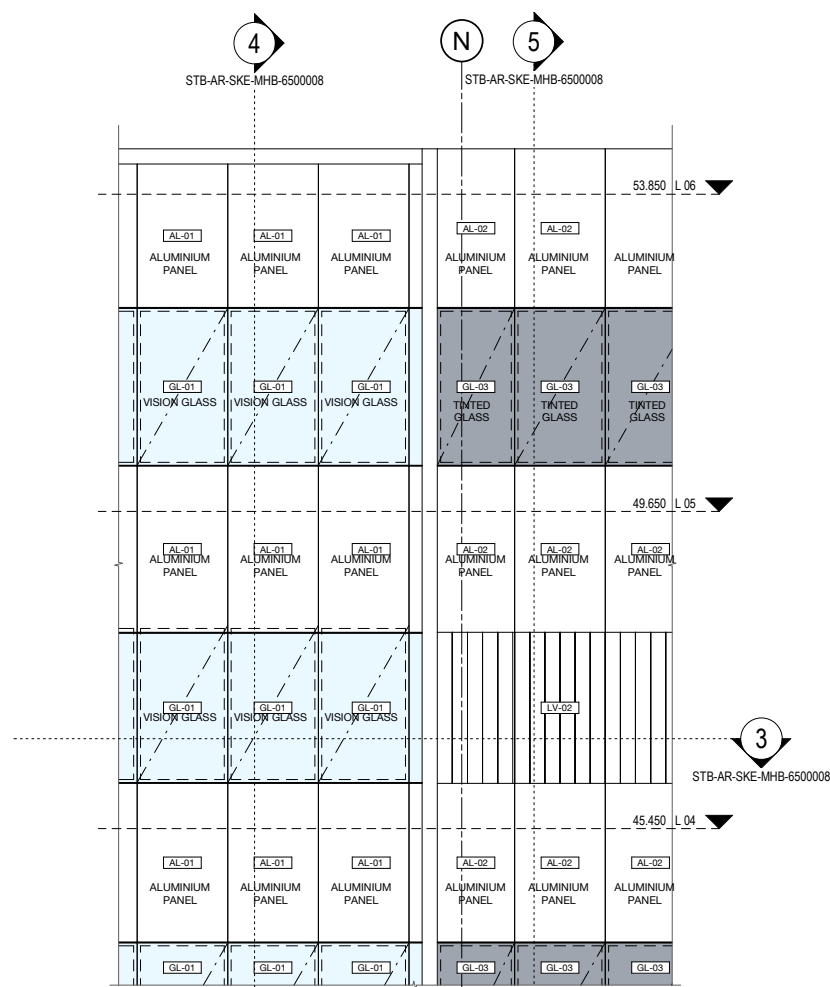
FACADE SYSTEM FS-111

SCALE	DATE	DRAWN BY	CHECKED
1 : 50 @ A1	06/09/19	CH	BS

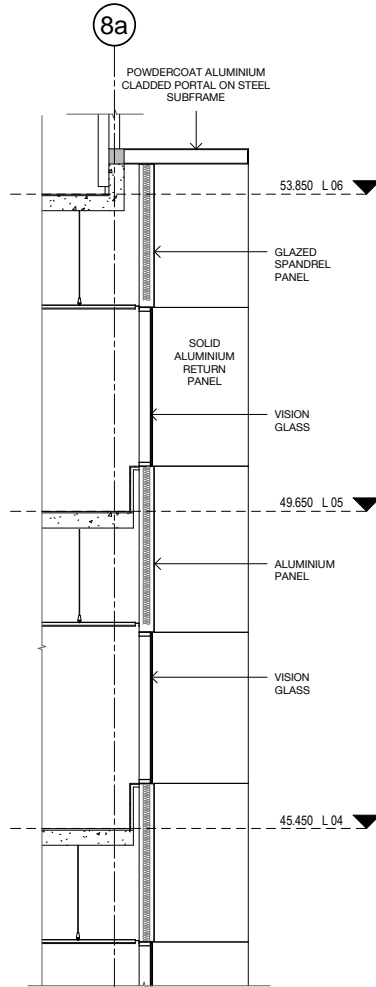
PROJECT No DRAWING No REVISION

10363 STB-AR-SKE-MHB-6500007 1

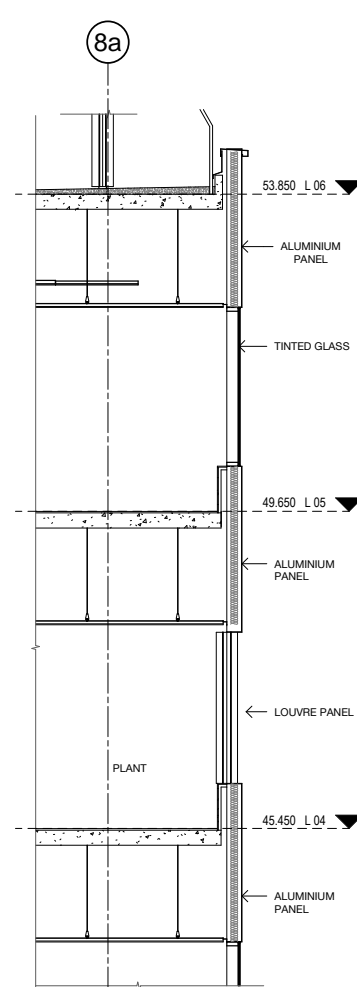
BSM 350/Tweed Valley Hospital/TVH_BS_FACADE_R2019.01



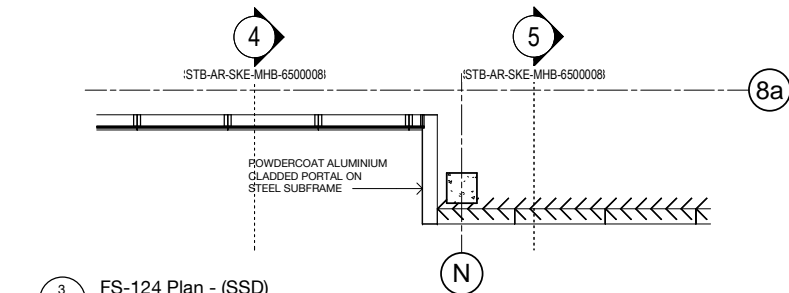
2 FS-124 - (SSD)
Elevation 1 : 50



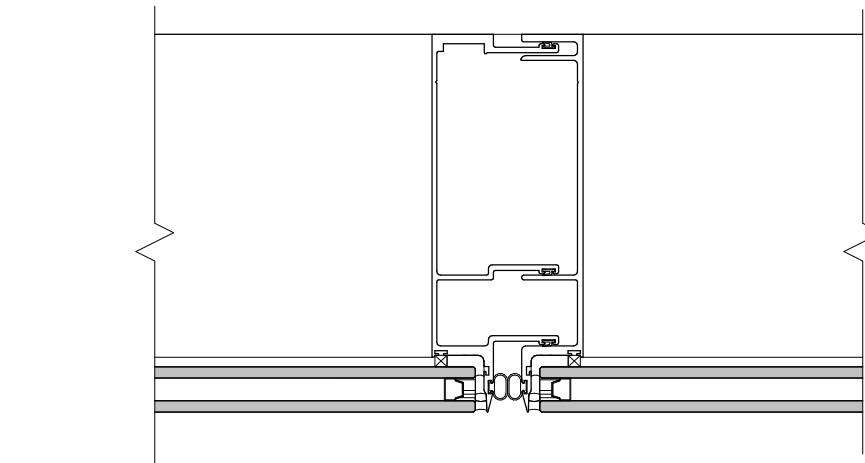
4 FS-124 (Section 1) - (SSD)
Elevation 1 : 50



5 FS-124 (Section 2) - (SSD)
Elevation 1 : 50



3 FS-124 Plan - (SSD)
Elevation 1 : 50



1 Typical Mullion Detail - (SSD)
Elevation 1 : 2

FACADE TYPE LEGEND

FS-111 PRECAST CONCRETE PANEL. PIGMENTED. OFF FORM FINISH. HIGH PERFORMANCE GLAZING ALUMINIUM MPC FRAME. SHADOWBOX SPANDREL GLASS OR ALUMINIUM FLAT PANEL MPC. ALUMINIUM LOUVRES TO PLANT AREAS, MPC	FS-113 PRECAST CONCRETE PANEL. NON-PIGMENTED / BASEMENT WALL/SERVICE AREAS (NO GLAZING). ALUMINIUM LOUVRES TO PLANT AREAS, MPC	FS-122 LOW PROFILE METAL CLADDING. METALLIC COLORBOND, COLOUR TBC. WITH HIGH PERFORMANCE VISION GLASS AND ALTERNATING METAL SPANDREL MPC/ SHADOWBOX SPANDREL GLASS IN POWDERCOAT ALUMINIUM FRAME MPC. ALUMINIUM LOUVRES TO PLANT AREAS, MPC	FS-131 CURTAIN WALL FAÇADE: WITH HIGH PERFORMANCE VISION GLASS AND SHADOWBOX SPANDREL GLASS IN POWDERCOAT ALUMINIUM FRAME MPC. ALUMINIUM LOUVRES TO PLANT AREAS, MPC. INCLUDES AIRLOCKS AND METAL CLAD PORTAL
FS-112 PRECAST CONCRETE PANEL. NON-PIGMENTED. OFF FORM FINISH. HIGH PERFORMANCE GLAZING ALUMINIUM MPC FRAME. SHADOWBOX SPANDREL GLASS OR ALUMINIUM FLAT PANEL MPC. ALUMINIUM LOUVRES TO PLANT AREAS, MPC	FS-121 LOW PROFILE METAL CLADDING. METALLIC COLORBOND, COLOUR TBC. WITH HIGH PERFORMANCE VISION GLASS AND SHADOWBOX SPANDREL GLASS IN POWDERCOAT ALUMINIUM FRAME MPC. ALUMINIUM LOUVRES TO PLANT AREAS, MPC	FS-123 LOW PROFILE METAL CLADDING. METALLIC COLORBOND, COLOUR TBC. WITH HIGH PERFORMANCE VISION GLAZING MPC / METAL SPANDREL MPC IN ALUMINIUM FRAME MPC. ALUMINIUM LOUVRES TO PLANT AREAS, MPC	FS-141 PLANT SCREEN LOUVRE SYSTEM
	FS-121A GABLE END: HIGH PROFILE METAL CLADDING SOLID / PERFORATED TO OPEN STAIR. WITH HIGH PERFORMANCE VISION GLASS / SHADOWBOX SPANDREL GLASS IN POWDERCOAT ALUMINIUM FRAME MPC.	FS-124 SILL TO CEILING WINDOW WALL. HIGH PERFORMANCE VISION GLASS / ALUMINIUM SPANDREL PANELS MPC. ALUMINIUM LOUVRES TO PLANT AREAS, MPC.	FS-151 GROUND LEVEL CANOPIES TBC
			FS-162 VERTICAL CHEVRON LOUVRE SCREEN

MPC = Metallic Powdercoat. Colour TBC.

FACADE FINISHES LEGEND

PC-01A PRECAST CONCRETE PANEL. LIGHT BEIGE TINT. OFF FORM / SMOOTH	LP-01B LOW PROFILE METAL CLADDING - SPANDEK. METALLIC COLORBOND - LIGHT. HORIZONTAL	AL-02 FLAT METAL CLADDING. METALLIC COLORBOND FINISH - MEDIUM
PC-01B PRECAST CONCRETE PANEL. BEIGE TINT. OFF FORM / SMOOTH	LP-02B LOW PROFILE METAL CLADDING - SPANDEK. METALLIC COLORBOND - MEDIUM. HORIZONTAL	AL-03 FLAT METAL CLADDING. METALLIC COLORBOND FINISH - WARM
PC-02A PRECAST CONCRETE PANEL. LIGHT OCHRE TINT. OFF FORM / SMOOTH	LP-03B LOW PROFILE METAL CLADDING - SPANDEK. METALLIC COLORBOND - WARM. HORIZONTAL	GL-01 HIGH PERFORMANCE VISION GLASS IN POWDERCOAT ALUMINIUM FRAME; SHADOWBOX
PC-02B PRECAST CONCRETE PANEL. OCHRE TINT. OFF FORM / SMOOTH	LP-02C LOW PROFILE METAL CLADDING - SPANDEK - PERFORATED. METALLIC COLORBOND - MEDIUM. VERTICAL	GL-02 HIGH PERFORMANCE SPANDREL GLASS IN POWDERCOAT ALUMINIUM FRAME; SHADOWBOX
PC-03 PRECAST CONCRETE PANEL. NO TINT. OFF FORM / SMOOTH	HP-01 HIGH PROFILE METAL CLADDING. METALLIC COLORBOND FINISH - LIGHT. VERTICAL	GL-03 HIGH PERFORMANCE VISION GLASS IN POWDERCOAT ALUMINIUM FRAME. DARK TINT
LP-01 LOW PROFILE METAL CLADDING - SPANDEK. METALLIC COLORBOND - LIGHT. VERTICAL	HP-01A HIGH PROFILE METAL CLADDING. PERFORATED. METALLIC COLORBOND FINISH - LIGHT. VERTICAL	GL-04 HIGH PERFORMANCE SPANDREL GLASS IN POWDERCOAT ALUMINIUM FRAME; SHADOWBOX. DARK TINT
LP-02 LOW PROFILE METAL CLADDING - SPANDEK. METALLIC COLORBOND - MEDIUM. VERTICAL	HP-02 HIGH PROFILE METAL CLADDING. METALLIC COLORBOND FINISH - MEDIUM. VERTICAL	LV-01 CHEVRON LOUVRE. METALLIC COLORBOND FINISH - LIGHT. VERTICAL
LP-03 LOW PROFILE METAL CLADDING - SPANDEK. METALLIC COLORBOND - WARM. VERTICAL	HP-02A HIGH PROFILE METAL CLADDING. PERFORATED. METALLIC COLORBOND FINISH - MEDIUM. VERTICAL	LV-02 CHEVRON LOUVRE. METALLIC COLORBOND FINISH - MEDIUM. VERTICAL
LP-11 LOW PROFILE METAL CLADDING - ENSEAM. METALLIC COLORBOND - LIGHT. VERTICAL	HP-03 HIGH PROFILE METAL CLADDING. METALLIC COLORBOND FINISH - WARM. VERTICAL	LV-03 CHEVRON LOUVRE. METALLIC COLORBOND FINISH - WARM. VERTICAL
LP-12 LOW PROFILE METAL CLADDING - ENSEAM. METALLIC COLORBOND - MEDIUM. VERTICAL	HP-03A HIGH PROFILE METAL CLADDING. PERFORATED. METALLIC COLORBOND FINISH - WARM. VERTICAL	BA-01 GLAZED BALLUSTRADE
LP-13 LOW PROFILE METAL CLADDING - ENSEAM. METALLIC COLORBOND - WARM. VERTICAL	AL-01 FLAT METAL CLADDING. METALLIC COLORBOND FINISH - LIGHT	BA-02 VERTICAL CHEVRON LOUVRE SCREEN - LOUVRECLAD 'ELLENBOROUGH'

KEY PLAN

REV	DESCRIPTION	DRN	DATE
1	ISSUED FOR SSD 2	BM	06/09/19

COPYRIGHT
ALL RIGHTS RESERVED. THIS WORK IS COPYRIGHT AND CANNOT BE REPRODUCED OR COPIED IN ANY FORM OR BY ANY MEANS (GRAPHIC, ELECTRONIC OR MECHANICAL INCLUDING PHOTOCOPYING) WITHOUT THE WRITTEN PERMISSION OF THE PRINCIPAL UNDER THE TERMS OF THE CONTRACT. ANY LICENCE, EXPRESS OR IMPLIED, TO USE THE DOCUMENT FOR ANY PURPOSE WHATSOEVER IS RESTRICTED TO THE TERMS OF THE AGREEMENT OR IMPLIED AGREEMENT WITH THE PRINCIPAL UNDER THE TERMS OF THE CONTRACT.

DIMENSIONS
USE FIGURED DIMENSIONS. DO NOT SCALE. CONTRACTORS MUST VERIFY ALL DIMENSIONS ON THE SITE BEFORE COMMENCING ANY WORK OR MAKING ANY SHOP DRAWING WHICH MUST BE SUBMITTED AND REVIEWED BEFORE MANUFACTURE.

FIXTURES, FITTINGS & EQUIPMENT SPECIFICATIONS
SUBSTITUTE FF&E EQUIPMENT SPECIFICATIONS
THE FIT-OUT DESIGN AND DOCUMENTATION HAS BEEN COMPLETED ON THE BASIS OF FF&E AND EQUIPMENT ADVISED TO THIS OFFICE AT THE TIME OF BRIEFING THE DESIGN. THE DESIGN PROVISIONS FOR FF&E AND EQUIPMENT INCORPORATES SPATIAL ALLOCATIONS, SERVICES, LOADING AND ACCESS CLEARANCES AND WHERE APPROPRIATE SERVICES REQUIREMENTS, HAVING DUE REGARD FOR SURROUNDING FIXTURES AND FITTINGS. IT SHOULD BE NOTED THAT SUBSTITUTE FF&E OR EQUIPMENT WITH ALTERNATE SPECIFICATIONS SHOULD NOT BE PROCURED PRIOR TO VALIDATING THOSE SPECIFICATIONS AGAINST THE ITEM CONTROL SCHEDULE AND DESIGN PROVISIONS IN THE MODEL. THIS OFFICE ACCEPTS NO RESPONSIBILITY FOR THE PROCUREMENT OF SUBSTITUTE FF&E AND EQUIPMENT WHICH HAS NOT BEEN REVIEWED AND VALIDATED AGAINST THE ORIGINAL DESIGN PROVISIONS.

SERVICE POINTS DISCLAIMER
THE SERVICE POINTS IDENTIFIED ON THESE DRAWINGS HAVE BEEN OVERLAYED FROM THE BUILDING SERVICES ENGINEERING MODEL AND ARE PROVIDED FOR INFORMATION AND SET-OUT PURPOSES ONLY. WE HAVE BEEN ADVISED BY THE SERVICES ENGINEERS THAT THE POINTS REPRESENTED ON THESE DRAWINGS ARE CORRECT AT THE TIME OF PUBLICATION. THIS OFFICE DOES NOT WARRANT THE ACCURACY OF THIS DATA. REFER TO THE BUILDING SERVICES ENGINEERING DOCUMENTATION FOR THE INSTALLATION OF THE SERVICES POINTS, AND THE INTERFACE BETWEEN THE SERVICES POINTS AND THE RESPECTIVE ENGINEERING SYSTEMS.

ISSUED FOR INFORMATION

ARCHITECTS

STH

ABN: 21 134 476 065
LEVEL 4, 89 YORK STREET
SYDNEY NSW 2000, AUSTRALIA
PH: (02) 8299 4600 FAX: (03) 9885 2455

BATESSMART.

M12147
43 BRISBANE STREET,
SILVER HILLS NSW 2010
ABN: 68 054 740 966 PH: (02) 8354 5100
E: syd@batesmart.com.au

THIS ARCHITECTURAL DESIGN IS THE COPYRIGHT OF SILVER THOMAS HANLEY AND BATES SMART AND SHALL NOT BE REPRODUCED WITHOUT THEIR WRITTEN PERMISSION

PROJECT MANAGER

TSA
MANAGEMENT

CLIENT

NSW
GOVERNMENT

Health
Infrastructure

Health
Northern NSW
Local Health District

PROJECT

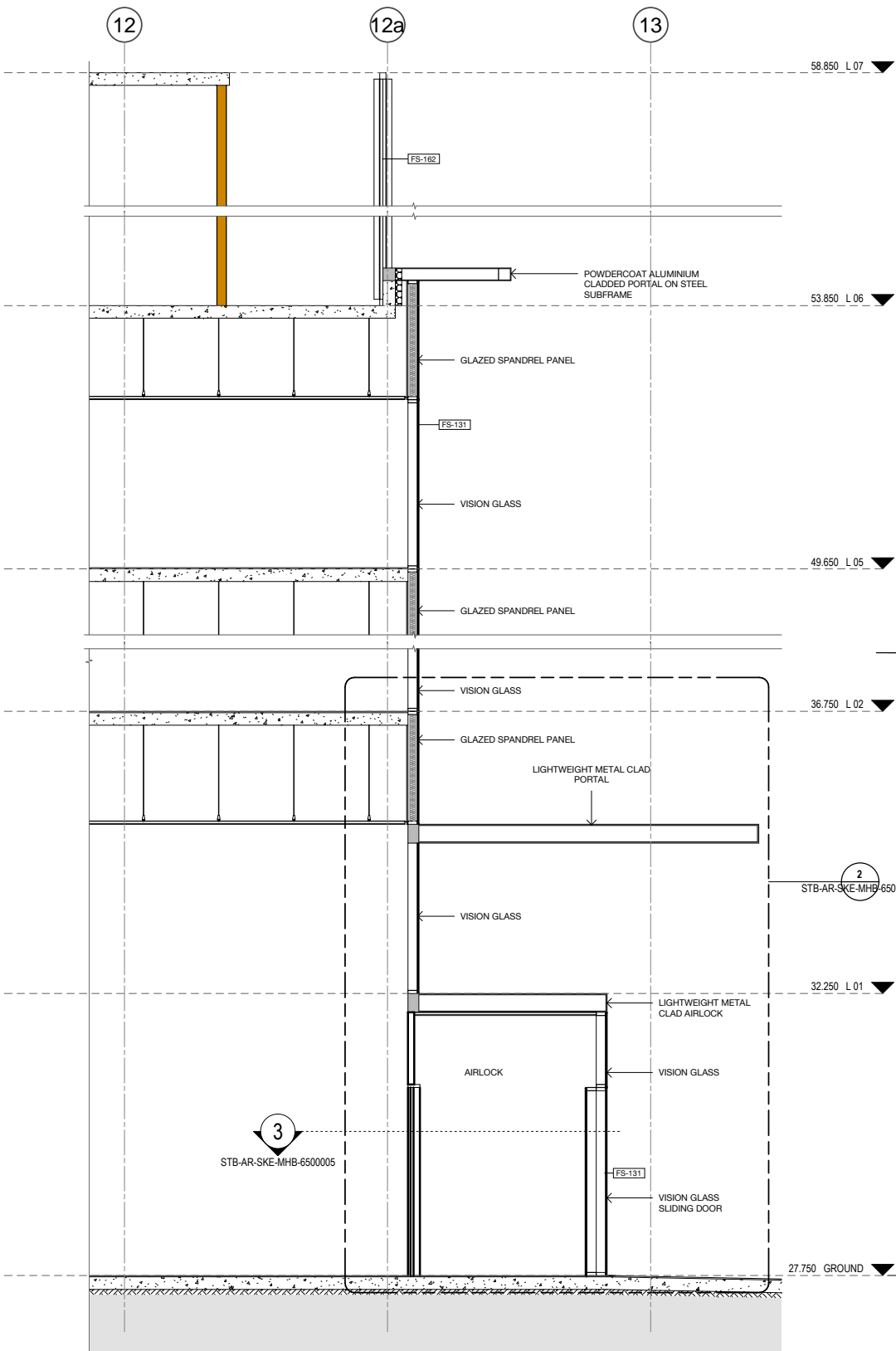
TWEED VALLEY HOSPITAL

DRAWING TITLE

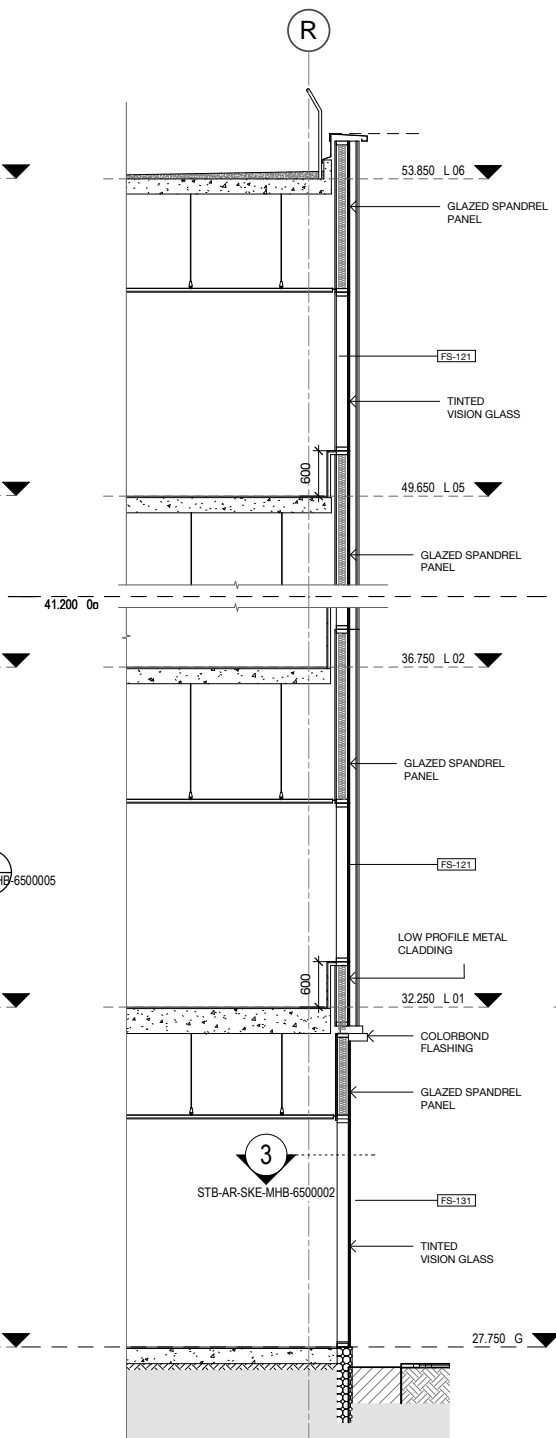
FACADE SYSTEM FS-124

SCALE	DATE	DRAWN BY	CHECKED
1 : 50 @ A1	06/09/19	CH	BS
1 : 100 @ A3			
PROJECT No	DRAWING No	REVISION	
10363	STB-AR-SKE-MHB-6500008	1	

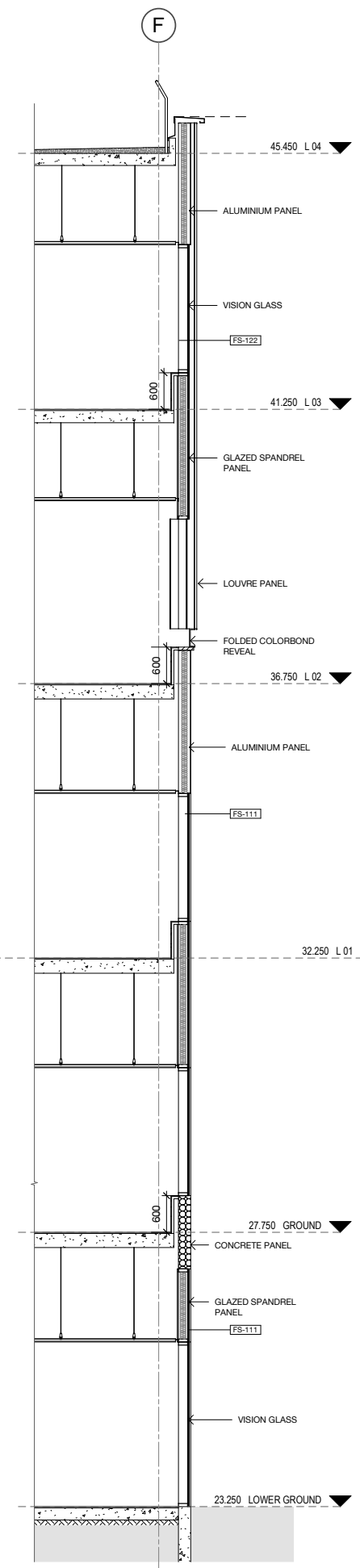
BSM 3300/Tweed Valley Hospital/TVH_BS_FACADE_R2019.01



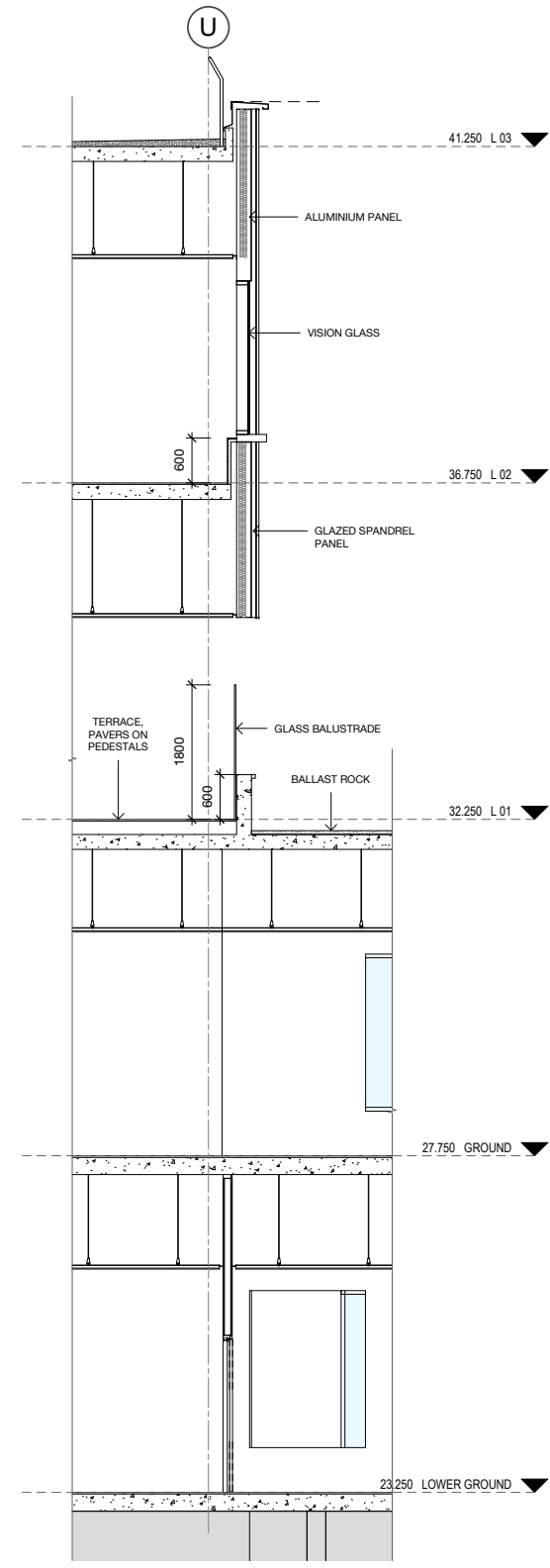
5 Main Entry Section (1)
Elevation 1 : 50



3 Section 2
Section 1 : 50



1 Section 3
Section 1 : 50



4 Section 4
Section 1 : 50

FACADE TYPE LEGEND			
FS-111	PRECAST CONCRETE PANEL, PIGMENTED, OFF FORM FINISH, HIGH PERFORMANCE GLAZING ALUMINIUM MPC FRAME, SHADOWBOX SPANDREL GLASS OR ALUMINIUM FLAT PANEL MPC, ALUMINIUM LOUVRES TO PLANT AREAS, MPC	FS-113	PRECAST CONCRETE PANEL, NON-PIGMENTED / BASEMENT WALL/SERVICE AREAS (NO GLAZING), ALUMINIUM LOUVRES TO PLANT AREAS, MPC
FS-112	PRECAST CONCRETE PANEL, NON-PIGMENTED, OFF FORM FINISH, HIGH PERFORMANCE GLAZING ALUMINIUM MPC FRAME, SHADOWBOX SPANDREL GLASS OR ALUMINIUM FLAT PANEL MPC, ALUMINIUM LOUVRES TO PLANT AREAS, MPC	FS-121	LOW PROFILE METAL CLADDING, METALLIC COLORBOND, COLOUR TBC, WITH HIGH PERFORMANCE VISION GLASS AND SHADOWBOX SPANDREL GLASS IN POWDERCOAT ALUMINIUM FRAME MPC, ALUMINIUM LOUVRES TO PLANT AREAS, MPC
		FS-122	LOW PROFILE METAL CLADDING, METALLIC COLORBOND, COLOUR TBC, WITH HIGH PERFORMANCE VISION GLASS AND ALTERNATING METAL SPANDREL MPC/ SHADOWBOX SPANDREL GLASS IN POWDERCOAT ALUMINIUM FRAME MPC, ALUMINIUM LOUVRES TO PLANT AREAS, MPC
		FS-123	LOW PROFILE METAL CLADDING, METALLIC COLORBOND, COLOUR TBC, HIGH PERFORMANCE VISION GLAZING MPC / METAL SPANDREL MPC IN ALUMINIUM FRAME MPC, ALUMINIUM LOUVRES TO PLANT AREAS, MPC
		FS-124	SILL TO CEILING WINDOW WALL, HIGH PERFORMANCE VISION GLASS / ALUMINIUM SPANDREL PANELS MPC, ALUMINIUM LOUVRES TO PLANT AREAS, MPC.
		FS-131	CURTAIN WALL FACADE: WITH HIGH PERFORMANCE VISION GLASS AND SHADOWBOX SPANDREL GLASS IN POWDERCOAT ALUMINIUM FRAME MPC, ALUMINIUM LOUVRES TO PLANT AREAS, MPC, INCLUDES AIRLOCKS AND METAL CLAD PORTAL
		FS-141	PLANT SCREEN LOUVRE SYSTEM
		FS-151	GROUND LEVEL CANOPIES TBC
		FS-161	GLASS BALUSTRADES TBC
		FS-162	VERTICAL CHEVRON LOUVRE SCREEN
			MPC = Metallic Powdercoat, Colour TBC.

KEY PLAN

REV	DESCRIPTION	DRN	DATE
1	ISSUED FOR SSD 2	BM	06/09/19

COPYRIGHT

ALL RIGHTS RESERVED. THIS WORK IS COPYRIGHT AND CANNOT BE REPRODUCED OR COPIED IN ANY FORM OR BY ANY MEANS (GRAPHIC, ELECTRONIC OR MECHANICAL INCLUDING PHOTOCOPIING) WITHOUT THE WRITTEN PERMISSION OF THE PRINCIPAL UNDER THE TERMS OF THE CONTRACT. ANY LICENCE, EXPRESS OR IMPLIED, TO USE THE DOCUMENT FOR ANY PURPOSE WHATSOEVER IS RESTRICTED TO THE TERMS OF THE AGREEMENT OR IMPLIED AGREEMENT WITH THE PRINCIPAL UNDER THE TERMS OF THE CONTRACT.

DIMENSIONS

USE FIGURED DIMENSIONS, DO NOT SCALE. CONTRACTORS MUST VERIFY ALL DIMENSIONS ON THE SITE BEFORE COMMENCING ANY WORK OR MAKING ANY SHOP DRAWING WHICH MUST BE SUBMITTED AND REVIEWED BEFORE MANUFACTURE.

FIXTURES, FITTINGS & EQUIPMENT SPECIFICATIONS

SUBSTITUTE FF&E EQUIPMENT SPECIFICATIONS

THE FIT-OUT DESIGN AND DOCUMENTATION HAS BEEN COMPLETED ON THE BASIS OF FF&E AND EQUIPMENT ADVISED TO THIS OFFICE AT THE TIME OF BRIEFING THE DESIGN. THE DESIGN PROVISIONS FOR FF&E AND EQUIPMENT INCORPORATES SPATIAL ALLOCATIONS, SERVICING, LOADING AND ACCESS CLEARANCES AND WHERE APPROPRIATE SERVICES REQUIREMENTS, HAVING DUE REGARD FOR SURROUNDING FIXTURES AND FITTINGS. IT SHOULD BE NOTED THAT SUBSTITUTE FF&E OR EQUIPMENT WITH ALTERNATE SPECIFICATIONS SHOULD NOT BE PROCURED PRIOR TO VALIDATING THOSE SPECIFICATIONS AGAINST THE ITEM CONTROL SCHEDULE AND DESIGN PROVISIONS IN THE MODEL. THIS OFFICE ACCEPTS NO RESPONSIBILITY FOR THE PROCUREMENT OF SUBSTITUTE FF&E AND EQUIPMENT WHICH HAS NOT BEEN REVIEWED AND VALIDATED AGAINST THE ORIGINAL DESIGN PROVISIONS.

SERVICE POINTS DISCLAIMER

THE SERVICE POINTS IDENTIFIED ON THESE DRAWINGS HAVE BEEN OVERLAYED FROM THE BUILDING SERVICES ENGINEERING MODEL, AND ARE PROVIDED FOR INFORMATION AND SET-OUT PURPOSES ONLY. WE HAVE BEEN ADVISED BY THE SERVICES ENGINEERS THAT THE POINTS REPRESENTED ON THESE DRAWINGS ARE CORRECT AT THE TIME OF PUBLICATION. THIS OFFICE DOES NOT WARRANT THE ACCURACY OF THIS DATA. REFER TO THE BUILDING SERVICES ENGINEERING DOCUMENTATION FOR THE INSTALLATION OF THE SERVICES POINTS, AND THE INTERFACE BETWEEN THE SERVICES POINTS AND THE RESPECTIVE ENGINEERING SYSTEMS.

ISSUED FOR INFORMATION

ARCHITECTS

BATESSMART.

M12147

ABN: 21 134 470 065
LEVEL 4, 89 YORK STREET
SYDNEY NSW 2000, AUSTRALIA
PH: (02) 8299 4600 FAX: (03) 9885 2455

43 BRISBANE STREET,
SURRY HILLS NSW 2010
ABN: 66 054 740 966 PH: (02) 8354 5100
E: syd@batesmart.com.au

THIS ARCHITECTURAL DESIGN IS THE COPYRIGHT OF SILVER THOMAS HANLEY AND BATES SMART AND SHALL NOT BE REPRODUCED WITHOUT THEIR WRITTEN PERMISSION

PROJECT MANAGER

CLIENT

Health
Infrastructure

Health
Northern NSW
Local Health District

PROJECT

TWEED VALLEY HOSPITAL

DRAWING TITLE

MHB FACADE SECTIONS

SCALE	DATE	DRAWN BY	CHECKED
1 : 50 @ A1	06/09/19	CH	BS
1 : 100 @ A3			

PROJECT No	DRAWING No	REVISION
10363	STB-AR-SKE-MHB-6500009	1

B:\M 3601\Tweed Valley Hospital\TVA_BS_FACADE_R2019.dwg