

1 BASEMENT - Facade Type  
Plan 1 : 300

#### FACADE TYPE SCOPING LEGEND

<b>FS-111</b> PRECAST CONCRETE PANEL, PIGMENTED, OFF FORM FINISH, HIGH PERFORMANCE GLAZING ALUMINIUM MPC FRAME, SHADOWBOX SPANDREL GLASS OR ALUMINIUM FLAT PANEL MPC, ALUMINIUM LOUVRES TO PLANT AREAS, MPC	<b>FS-113</b> PRECAST CONCRETE PANEL, NON-PIGMENTED / BASEMENT WALL/SERVICE AREAS (NO GLAZING), ALUMINIUM LOUVRES TO PLANT AREAS, MPC	<b>FS-122</b> LOW PROFILE METAL CLADDING, METALLIC COLORBOND, COLOUR TBC, WITH HIGH PERFORMANCE VISION GLASS AND ALTERNATING METAL SPANDREL MPC/ SHADOWBOX SPANDREL GLASS IN POWDERCOAT ALUMINIUM FRAME MPC, ALUMINIUM LOUVRES TO PLANT AREAS, MPC	<b>FS-131</b> CURTAIN WALL FAÇADE: WITH HIGH PERFORMANCE VISION GLASS AND SHADOWBOX SPANDREL GLASS IN POWDERCOAT ALUMINIUM FRAME MPC, ALUMINIUM LOUVRES TO PLANT AREAS, MPC, INCLUDES AIRLOCKS AND METAL CLAD PORTAL
<b>FS-121</b> LOW PROFILE METAL CLADDING, METALLIC COLORBOND, COLOUR TBC, WITH HIGH PERFORMANCE VISION GLASS AND SHADOWBOX SPANDREL GLASS IN POWDERCOAT ALUMINIUM FRAME MPC, ALUMINIUM LOUVRES TO PLANT AREAS, MPC	<b>FS-121A</b> GABLE END: HIGH PROFILE METAL CLADDING SOLID / PERFORATED TO OPEN STAIR, WITH HIGH PERFORMANCE VISION GLASS / SHADOWBOX SPANDREL GLASS IN POWDERCOAT ALUMINIUM FRAME MPC	<b>FS-123</b> LOW PROFILE METAL CLADDING, METALLIC COLORBOND, COLOUR TBC, HIGH PERFORMANCE VISION GLAZING MPC / METAL SPANDREL MPC, IN ALUMINIUM FRAME MPC, ALUMINIUM LOUVRES TO PLANT AREAS, MPC	<b>FS-141</b> PLANT LOUVRE
		<b>FS-124</b> SILL TO CEILING WINDOW WALL, HIGH PERFORMANCE VISION GLASS / ALUMINIUM SPANDREL PANELS MPC, ALUMINIUM LOUVRES TO PLANT AREAS, MPC	<b>FS-151</b> GROUND LEVEL CANOPIES TBC
			<b>FS-161</b> GLASS BALUSTRADES TBC
			<b>FS-162</b> VERTICAL CHEVRON LOUVRE SCREEN

MPC = Metallic Powdercoat, Colour TBC.

REV	DESCRIPTION	DRN	DATE
1	ISSUED FOR SSD 2	BM	06/09/19

#### FACADE AREAS

Facade Type	Area	Area %
FS-111	3025.68 m <sup>2</sup>	9.82%
FS-112	2954.68 m <sup>2</sup>	9.59%
FS-113	2782.56 m <sup>2</sup>	9.03%
FS-121	4271.62 m <sup>2</sup>	13.86%
FS-121A	2751.89 m <sup>2</sup>	8.93%
FS-122	1857.73 m <sup>2</sup>	6.03%
FS-123	8888.52 m <sup>2</sup>	22.38%
FS-124	2486.13 m <sup>2</sup>	8.07%
FS-131	2151.76 m <sup>2</sup>	6.98%
FS-141	233.42 m <sup>2</sup>	0.76%
FS-161	96.24 m <sup>2</sup>	0.31%
FS-162	1313.69 m <sup>2</sup>	4.26%
	30824.38 m <sup>2</sup>	

\* Excludes Canopies  
\* Includes Stage 2B Expansion

#### COPYRIGHT

ALL RIGHTS RESERVED. THIS WORK IS COPYRIGHT AND CANNOT BE REPRODUCED OR COPIED IN ANY FORM OR BY ANY MEANS (GRAPHIC, ELECTRONIC OR MECHANICAL, INCLUDING PHOTOCOPYING) WITHOUT THE WRITTEN PERMISSION OF THE PRINCIPAL. UNDER THE TERMS OF THE CONTRACT ANY LICENCE, EXPRESS OR IMPLIED, TO USE THE DOCUMENT FOR ANY PURPOSE WHATSOEVER IS RESTRICTED TO THE TERMS OF THE AGREEMENT OR IMPLIED AGREEMENT WITH THE PRINCIPAL UNDER THE TERMS OF THE CONTRACT.

#### DIMENSIONS

USE FIGURED DIMENSIONS. DO NOT SCALE. CONTRACTORS MUST VERIFY ALL DIMENSIONS ON THE SITE BEFORE COMMENCING ANY WORK OR MAKING ANY SHOP DRAWING WHICH MUST BE SUBMITTED AND REVIEWED BEFORE MANUFACTURE.

#### FIXTURES, FITTINGS & EQUIPMENT SPECIFICATIONS

SUBSTITUTE FF&E EQUIPMENT SPECIFICATIONS  
THE FIT-OUT DESIGN AND DOCUMENTATION HAS BEEN COMPLETED ON THE BASIS OF FF&E AND EQUIPMENT ADVISED TO THIS OFFICE AT THE TIME OF BRIEFING THE DESIGN. THE DESIGN PROVISIONS FOR FF&E AND EQUIPMENT INCORPORATES SPATIAL ALLOCATIONS, SERVING, LOADING AND ACCESS CLEARANCES AND WHERE APPROPRIATE SERVICES REQUIREMENTS, HAVING DUE REGARD FOR SURROUNDING FIXTURES AND FITTINGS. IT SHOULD BE NOTED THAT SUBSTITUTE FF&E OR EQUIPMENT WITH ALTERNATE SPECIFICATIONS SHOULD NOT BE PROCURED PRIOR TO VALIDATING THESE SPECIFICATIONS AGAINST THE ITEM CONTROL SCHEDULE AND DESIGN PROVISIONS IN THE MODEL. THIS OFFICE ACCEPTS NO RESPONSIBILITY FOR THE PROCUREMENT OF SUBSTITUTE FF&E AND EQUIPMENT WHICH HAS NOT BEEN REVIEWED AND VALIDATED AGAINST THE ORIGINAL DESIGN PROVISIONS.

#### SERVICE POINTS DISCLAIMER

THE SERVICE POINTS IDENTIFIED ON THESE DRAWINGS HAVE BEEN OVERLAYED FROM THE BUILDING SERVICES ENGINEERING MODEL, AND ARE PROVIDED FOR INFORMATION AND SET-OUT PURPOSES ONLY. WE HAVE BEEN ADVISED BY THE SERVICES ENGINEERS THAT THE POINTS REPRESENTED ON THESE DRAWINGS ARE CORRECT AT THE TIME OF PUBLICATION. THIS OFFICE DOES NOT WARRANT THE ACCURACY OF THIS DATA. REFER TO THE BUILDING SERVICES ENGINEERING DOCUMENTATION FOR THE INSTALLATION OF THE SERVICES POINTS, AND THE INTERFACE BETWEEN THE SERVICES POINTS AND THE RESPECTIVE ENGINEERING SYSTEMS.

#### ISSUED FOR INFORMATION

ARCHITECTS

**STH**

**BATESSMART.**

**M12147**

ABN: 21 134 476 005  
LEVEL 4, 89 YORK STREET  
SYDNEY NSW 2000, AUSTRALIA  
PH: (02) 8299 4600 FAX: (02) 9885 2455

43 BRISBANE STREET,  
SURRY HILLS, NSW 2010  
ABN: 66 054 740 866 PH: (02) 8354 5100  
E: syd@batesmart.com.au

THIS ARCHITECTURAL DESIGN IS THE COPYRIGHT OF SILVER THOMAS HANLEY AND BATES SMART AND SHALL NOT BE REPRODUCED WITHOUT THEIR WRITTEN PERMISSION

PROJECT MANAGER

**TSA**  
MANAGEMENT

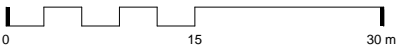
CLIENT

#### TWEED VALLEY HOSPITAL

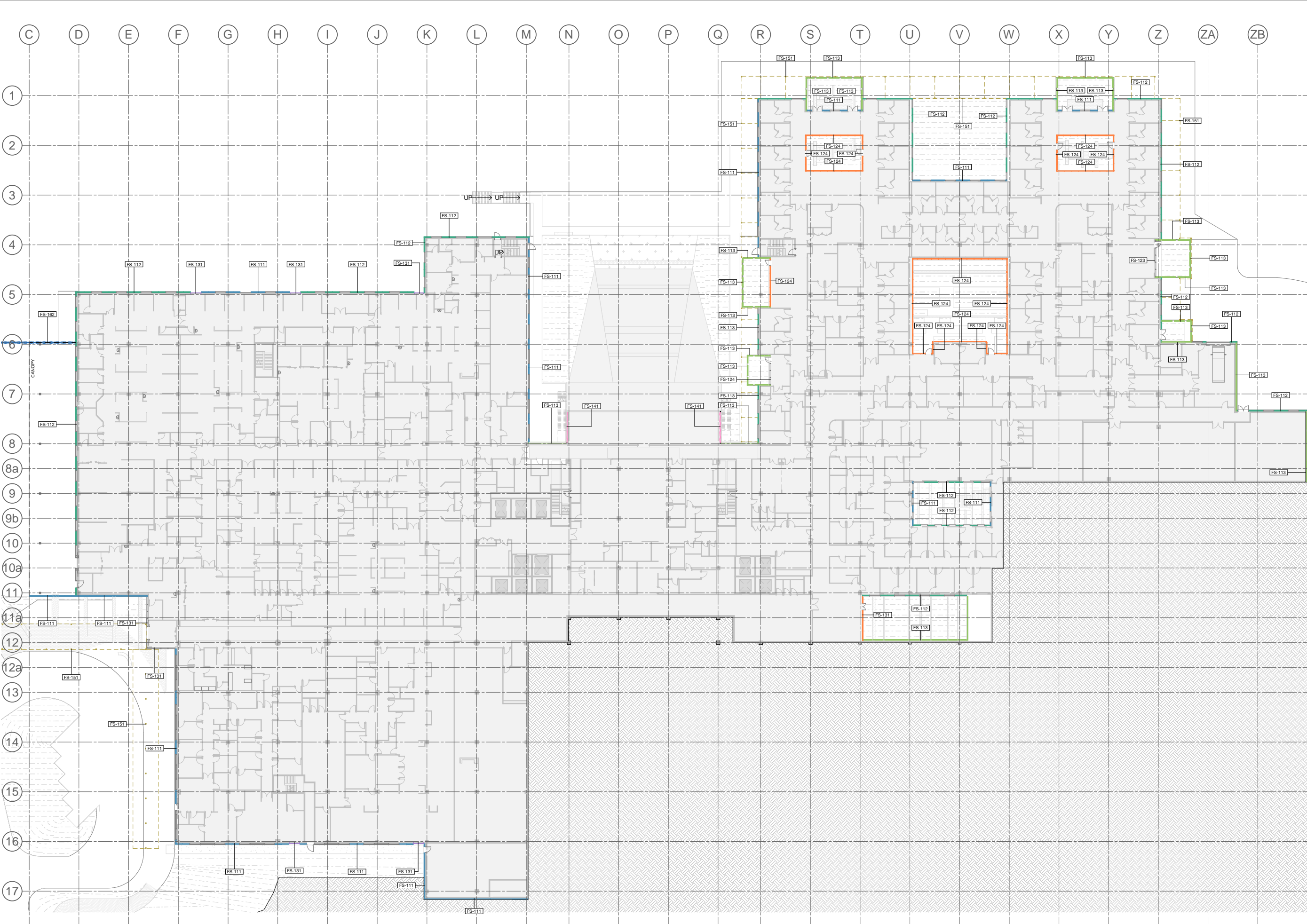
DRAWING TITLE

#### FACADE TYPE PLANS MHB - BASEMENT

SCALE	DATE	DRAWN BY	CHECKED
1 : 300 @ A1	06/09/19	MC	BS
1 : 600 @ A3			
PROJECT No	DRAWING No	REVISION	
10363	STB-AR-SKE-MHB-21B1001	1	







1 LOWER GROUND - Facade Type Plan  
1 : 300

FACADE TYPE SCOPING LEGEND			
<div></div> FS-111	PRECAST CONCRETE PANEL, PIGMENTED, OFF FORM FINISH, HIGH PERFORMANCE GLAZING ALUMINIUM MPC FRAME, SHADOWBOX SPANDREL GLASS OR ALUMINIUM FLAT PANEL MPC, ALUMINIUM LOUVRES TO PLANT AREAS, MPC	<div></div> FS-113	PRECAST CONCRETE PANEL, NON-PIGMENTED / BASEMENT WALL/SERVICE AREAS (NO GLAZING), ALUMINIUM LOUVRES TO PLANT AREAS, MPC
<div></div> FS-121	LOW PROFILE METAL CLADDING, METALLIC COLORBOND, COLOUR TBC, WITH HIGH PERFORMANCE VISION GLASS AND SHADOWBOX SPANDREL GLASS IN POWDERCOAT ALUMINIUM FRAME MPC, ALUMINIUM LOUVRES TO PLANT AREAS, MPC	<div></div> FS-122	LOW PROFILE METAL CLADDING, METALLIC COLORBOND, COLOUR TBC, WITH HIGH PERFORMANCE VISION GLASS AND ALTERNATING METAL SPANDREL MPC/ SHADOWBOX SPANDREL GLASS IN POWDERCOAT ALUMINIUM FRAME MPC, ALUMINIUM LOUVRES TO PLANT AREAS, MPC
<div></div> FS-112	PRECAST CONCRETE PANEL, NON-PIGMENTED, OFF FORM FINISH, HIGH PERFORMANCE GLAZING ALUMINIUM MPC FRAME, SHADOWBOX SPANDREL GLASS OR ALUMINIUM FLAT PANEL MPC, ALUMINIUM LOUVRES TO PLANT AREAS, MPC	<div></div> FS-123	LOW PROFILE METAL CLADDING, METALLIC COLORBOND, COLOUR TBC, HIGH PERFORMANCE VISION GLAZING MPC / METAL SPANDREL MPC, IN ALUMINIUM FRAME MPC, ALUMINIUM LOUVRES TO PLANT AREAS, MPC
<div></div> FS-121A	GABLE END: HIGH PROFILE METAL CLADDING SOLID / PERFORATED TO OPEN STAIR, WITH HIGH PERFORMANCE VISION GLASS / SHADOWBOX SPANDREL GLASS IN POWDERCOAT ALUMINIUM FRAME MPC.	<div></div> FS-124	SILL TO CEILING WINDOW WALL, HIGH PERFORMANCE VISION GLASS / ALUMINIUM SPANDREL PANELS MPC, ALUMINIUM LOUVRES TO PLANT AREAS, MPC.
<div></div> FS-131	CURTAIN WALL FAÇADE: WITH HIGH PERFORMANCE VISION GLASS AND SHADOWBOX SPANDREL GLASS IN POWDERCOAT ALUMINIUM FRAME MPC, ALUMINIUM LOUVRES TO PLANT AREAS, MPC, INCLUDES AIRLOCKS AND METAL CLAD PORTAL	<div></div> FS-151	GROUND LEVEL CANOPIES TBC
<div></div> FS-132	PLANT LOUVRE	<div></div> FS-161	GLASS BALUSTRADES TBC
<div></div> FS-161	GLASS BALUSTRADES TBC	<div></div> FS-162	VERTICAL CHEVRON LOUVRE SCREEN
MPC = Metallic Powdercoat. Colour TBC.			

KEY PLAN			
REV	DESCRIPTION	DRN	DATE
1	ISSUED FOR SSD 2	BM	06/09/19

FACADE AREAS		
Facade Type	Area	Area %
FS-111	3025.68 m <sup>2</sup>	9.82%
FS-112	2954.68 m <sup>2</sup>	9.59%
FS-113	2782.56 m <sup>2</sup>	9.03%
FS-121	4271.62 m <sup>2</sup>	13.86%
FS-121A	2751.89 m <sup>2</sup>	8.93%
FS-122	1857.75 m <sup>2</sup>	6.03%
FS-123	8888.92 m <sup>2</sup>	22.38%
FS-124	2486.13 m <sup>2</sup>	8.07%
FS-131	2151.76 m <sup>2</sup>	6.98%
FS-141	233.42 m <sup>2</sup>	0.76%
FS-161	96.24 m <sup>2</sup>	0.31%
FS-162	1313.69 m <sup>2</sup>	4.26%
	30824.38 m <sup>2</sup>	
* Excludes Canopies		
* Includes Stage 2B Expansion		

**COPYRIGHT**  
ALL RIGHTS RESERVED. THIS WORK IS COPYRIGHT AND CANNOT BE REPRODUCED OR COPIED IN ANY FORM OR BY ANY MEANS (GRAPHIC, ELECTRONIC OR MECHANICAL, INCLUDING PHOTOCOPYING) WITHOUT THE WRITTEN PERMISSION OF THE PRINCIPAL. UNDER THE TERMS OF THE CONTRACT, ANY LICENCE, EXPRESS OR IMPLIED, TO USE THE DOCUMENT FOR ANY PURPOSE WHATSOEVER IS RESTRICTED TO THE TERMS OF THE AGREEMENT OR IMPLIED AGREEMENT WITH THE PRINCIPAL UNDER THE TERMS OF THE CONTRACT.

**DIMENSIONS**  
USE FIGURED DIMENSIONS. DO NOT SCALE. CONTRACTORS MUST VERIFY ALL DIMENSIONS ON THE SITE BEFORE COMMENCING ANY WORK OR MAKING ANY SHOP DRAWING WHICH MUST BE SUBMITTED AND REVIEWED BEFORE MANUFACTURE.

**FIXTURES, FITTINGS & EQUIPMENT SPECIFICATIONS**  
SUBSTITUTE FF&E EQUIPMENT SPECIFICATIONS  
THE FIT-OUT DESIGN AND DOCUMENTATION HAS BEEN COMPLETED ON THE BASIS OF FF&E AND EQUIPMENT ADVISED TO THIS OFFICE AT THE TIME OF BRIEFING THE DESIGN. THE DESIGN PROVISIONS FOR FF&E AND EQUIPMENT INCORPORATES SPATIAL ALLOCATIONS, SERVICING, LOADING AND ACCESS CLEARANCES AND WHERE APPROPRIATE SERVICES REQUIREMENTS, HAVING DUE REGARD FOR SURROUNDING FIXTURES AND FITTINGS. IT SHOULD BE NOTED THAT SUBSTITUTE FF&E OR EQUIPMENT WITH ALTERNATE SPECIFICATIONS SHOULD NOT BE PROCURED PRIOR TO VALIDATING THESE SPECIFICATIONS AGAINST THE ITEM CONTROL, SCHEDULE AND DESIGN PROVISIONS IN THE MODEL. THIS OFFICE ACCEPTS NO RESPONSIBILITY FOR THE PROCUREMENT OF SUBSTITUTE FF&E AND EQUIPMENT WHICH HAS NOT BEEN REVIEWED AND VALIDATED AGAINST THE ORIGINAL DESIGN PROVISIONS.

**SERVICE POINTS DISCLAIMER**  
THE SERVICE POINTS IDENTIFIED ON THESE DRAWINGS HAVE BEEN OVERLAYED FROM THE BUILDING SERVICES ENGINEERING MODEL AND ARE PROVIDED FOR INFORMATION AND SET-OUT PURPOSES ONLY. WE HAVE BEEN ADVISED BY THE SERVICES ENGINEERS THAT THE POINTS REPRESENTED ON THESE DRAWINGS ARE CORRECT AT THE TIME OF PUBLICATION. THIS OFFICE DOES NOT WARRANT THE ACCURACY OF THIS DATA. REFER TO THE BUILDING SERVICES ENGINEERING DOCUMENTATION FOR THE INSTALLATION OF THE SERVICES POINTS, AND THE INTERFACE BETWEEN THE SERVICES POINTS AND THE RESPECTIVE ENGINEERING SYSTEMS.

**ISSUED FOR INFORMATION**

ARCHITECTS

STH

BATESSMART.

ABN: 21 134 476 965  
LEVEL 4, 49 YORCK STREET  
SYDNEY NSW 2000, AUSTRALIA  
PH: (02) 8299 4600 FAX: (02) 9885 2455

M12147  
43 BRISBANE STREET,  
SURREY HILLS, NSW 2010  
ABN: 66 054 740 986 PH: (02) 8354 5100  
E: [tyd@batesmart.com.au](mailto:tyd@batesmart.com.au)

THIS ARCHITECTURAL DESIGN IS THE COPYRIGHT OF SILVER THOMAS HANLEY AND BATES SMART AND SHALL NOT BE REPRODUCED WITHOUT THEIR WRITTEN PERMISSION

PROJECT MANAGER

TSA

MANAGEMENT

CLIENT

NSW GOVERNMENT

Health Infrastructure

Health Northern NSW Local Health District

PROJECT

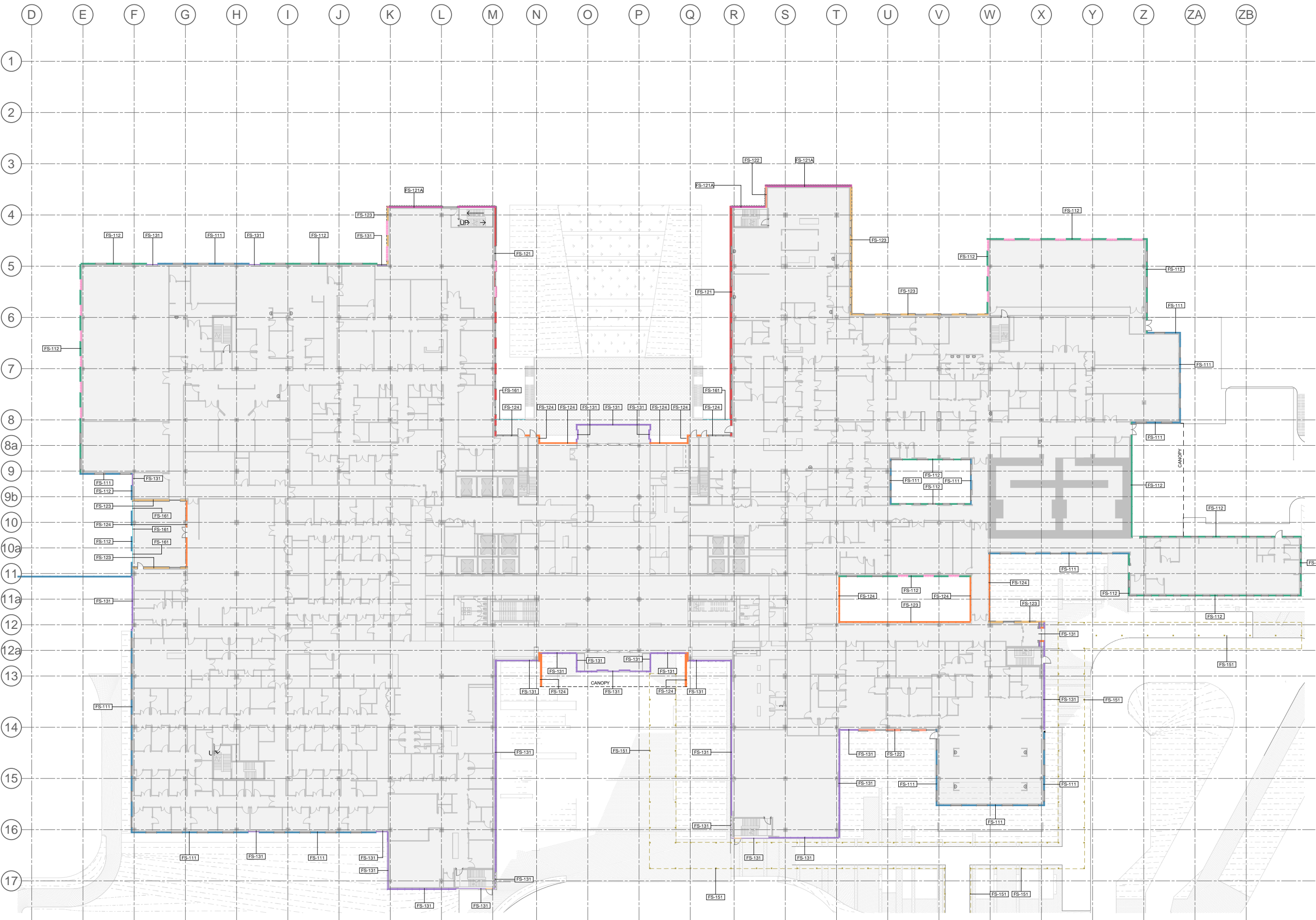
**TWEED VALLEY HOSPITAL**

DRAWING TITLE

**FACADE TYPE PLANS  
MHB - LOWER GROUND**

SCALE	DATE	DRAWN BY	CHECKED
1 : 300 @ A1	06/09/19	MC	BS
1 : 600 @ A3			
PROJECT No	DRAWING No	REVISION	
10363	STB-AR-SKE-MHB-21LG001	1	

BIM 360/Tweed Valley Hospital/TVH\_BS\_FACADE\_R2019.dwg



1 GROUND - Facade Type  
Plan  
1 : 300

FACADE TYPE SCOPING LEGEND			
<div></div> FS-111	PRECAST CONCRETE PANEL, PIGMENTED, OFF FORM FINISH, HIGH PERFORMANCE GLAZING ALUMINIUM MPC FRAME, SHADOWBOX SPANDREL GLASS OR ALUMINIUM FLAT PANEL MPC, ALUMINIUM LOUVRES TO PLANT AREAS, MPC	<div></div> FS-113	PRECAST CONCRETE PANEL, NON-PIGMENTED / BASEMENT WALL/SERVICE AREAS (NO GLAZING), ALUMINIUM LOUVRES TO PLANT AREAS, MPC
<div></div> FS-121	LOW PROFILE METAL CLADDING, METALLIC COLORBOND, COLOUR TBC, WITH HIGH PERFORMANCE VISION GLASS AND SHADOWBOX SPANDREL GLASS IN POWDERCOAT ALUMINIUM FRAME MPC, ALUMINIUM LOUVRES TO PLANT AREAS, MPC	<div></div> FS-122	LOW PROFILE METAL CLADDING, METALLIC COLORBOND, COLOUR TBC, WITH HIGH PERFORMANCE VISION GLASS AND ALTERNATING METAL SPANDREL MPC/ SHADOWBOX SPANDREL GLASS IN POWDERCOAT ALUMINIUM FRAME MPC, ALUMINIUM LOUVRES TO PLANT AREAS, MPC
<div></div> FS-112	PRECAST CONCRETE PANEL, NON-PIGMENTED, OFF FORM FINISH, HIGH PERFORMANCE GLAZING ALUMINIUM MPC FRAME, SHADOWBOX SPANDREL GLASS OR ALUMINIUM FLAT PANEL MPC, ALUMINIUM LOUVRES TO PLANT AREAS, MPC	<div></div> FS-123	LOW PROFILE METAL CLADDING, METALLIC COLORBOND, COLOUR TBC, HIGH PERFORMANCE VISION GLAZING MPC / METAL SPANDREL MPC, IN ALUMINIUM FRAME MPC, ALUMINIUM LOUVRES TO PLANT AREAS, MPC
<div></div> FS-121A	GABLE END: HIGH PROFILE METAL CLADDING SOLID / PERFORATED TO OPEN STAIR, WITH HIGH PERFORMANCE VISION GLASS / SHADOWBOX SPANDREL GLASS IN POWDERCOAT ALUMINIUM FRAME MPC.	<div></div> FS-124	SILL TO CEILING WINDOW WALL, HIGH PERFORMANCE VISION GLASS / ALUMINIUM SPANDREL PANELS MPC, ALUMINIUM LOUVRES TO PLANT AREAS, MPC.
<div></div> FS-131	CURTAIN WALL FAÇADE: WITH HIGH PERFORMANCE VISION GLASS AND SHADOWBOX SPANDREL GLASS IN POWDERCOAT ALUMINIUM FRAME MPC, ALUMINIUM LOUVRES TO PLANT AREAS, MPC. INCLUDES AIRLOCKS AND METAL CLAD PORTAL	<div></div> FS-141	PLANT LOUVRE
<div></div> FS-151	GROUND LEVEL CANOPIES TBC	<div></div> FS-161	GLASS BALUSTRADES TBC
<div></div> FS-162	VERTICAL CHEVRON LOUVRE SCREEN		
MPC = Metallic Powdercoat. Colour TBC.			

KEY PLAN			
REV	DESCRIPTION	DRN	DATE
1	ISSUED FOR SSD 2	BM	06/09/19

FACADE AREAS		
Facade Type	Area	Area %
FS-111	3025.68 m²	9.82%
FS-112	2954.68 m²	9.59%
FS-113	2782.56 m²	9.03%
FS-121	4271.62 m²	13.86%
FS-121A	2751.89 m²	8.93%
FS-122	1857.75 m²	6.03%
FS-123	8898.92 m²	22.38%
FS-124	2486.13 m²	8.07%
FS-131	2151.76 m²	6.98%
FS-141	233.42 m²	0.76%
FS-161	96.24 m²	0.31%
FS-162	1313.69 m²	4.26%
	30824.38 m²	
* Excludes Canopies		
* Includes Stage 2B Expansion		

**COPYRIGHT**  
ALL RIGHTS RESERVED. THIS WORK IS COPYRIGHT AND CANNOT BE REPRODUCED OR COPIED IN ANY FORM OR BY ANY MEANS (GRAPHIC, ELECTRONIC OR MECHANICAL, INCLUDING PHOTOCOPIING) WITHOUT THE WRITTEN PERMISSION OF THE PRINCIPAL. UNDER THE TERMS OF THE CONTRACT, ANY LICENCE, EXPRESS OR IMPLIED, TO USE THE DOCUMENT FOR ANY PURPOSE WHATSOEVER IS RESTRICTED TO THE TERMS OF THE AGREEMENT OR IMPLIED AGREEMENT WITH THE PRINCIPAL UNDER THE TERMS OF THE CONTRACT.

**DIMENSIONS**  
USE FIGURED DIMENSIONS. DO NOT SCALE. CONTRACTORS MUST VERIFY ALL DIMENSIONS ON THE SITE BEFORE COMMENCING ANY WORK OR MAKING ANY SHOP DRAWING WHICH MUST BE SUBMITTED AND REVIEWED BEFORE MANUFACTURE.

**FIXTURES, FITTINGS & EQUIPMENT SPECIFICATIONS**  
SUBSTITUTE FF&E EQUIPMENT SPECIFICATIONS  
THE FIT-OUT DESIGN AND DOCUMENTATION HAS BEEN COMPLETED ON THE BASIS OF FF&E AND EQUIPMENT ADVISED TO THIS OFFICE AT THE TIME OF BRIEFING THE DESIGN. THE DESIGN PROVIDES FOR FF&E AND EQUIPMENT INCORPORATES SPATIAL ALLOCATIONS, SERVING, LOADING AND ACCESS CLEARANCES AND WHERE APPROPRIATE SERVICES REQUIREMENTS, HAVING DUE REGARD FOR SURROUNDING FIXTURES AND FITTINGS. IT SHOULD BE NOTED THAT SUBSTITUTE FF&E OR EQUIPMENT WITH ALTERNATE SPECIFICATIONS SHOULD NOT BE PROCURED PRIOR TO VALIDATING THESE SPECIFICATIONS AGAINST THE ITEM CONTROL, SCHEDULE AND DESIGN PROVISIONS IN THE MODEL. THIS OFFICE ACCEPTS NO RESPONSIBILITY FOR THE PROCUREMENT OF SUBSTITUTE FF&E AND EQUIPMENT WHICH HAS NOT BEEN REVIEWED AND VALIDATED AGAINST THE ORIGINAL DESIGN PROVISIONS.

**SERVICE POINTS DISCLAIMER**  
THE SERVICE POINTS IDENTIFIED ON THESE DRAWINGS HAVE BEEN OVERLAYED FROM THE BUILDING SERVICES ENGINEERING MODEL, AND ARE PROVIDED FOR INFORMATION AND SET-OUT PURPOSES ONLY. WE HAVE BEEN ADVISED BY THE SERVICES ENGINEERS THAT THE POINTS REPRESENTED ON THESE DRAWINGS ARE CORRECT AT THE TIME OF PUBLICATION. THIS OFFICE DOES NOT WARRANT THE ACCURACY OF THIS DATA. REFER TO THE BUILDING SERVICES ENGINEERING DOCUMENTATION FOR THE INSTALLATION OF THE SERVICES POINTS, AND THE INTERFACE BETWEEN THE SERVICES POINTS AND THE RESPECTIVE ENGINEERING SYSTEMS.

## ISSUED FOR INFORMATION

ARCHITECTS

STH

BATESSMART.

ABN: 21 134 476 905  
LEVEL 4, 89 YORK STREET  
SYDNEY NSW 2000, AUSTRALIA  
PH: (02) 8299 4800 FAX: (02) 9885 2455

M12147

43 BRISBANE STREET,  
SURREY HILLS NSW 2015  
ABN: 66 054 740 886 PH: (02) 8354 5100  
E: syd@batesmart.com.au

THIS ARCHITECTURAL DESIGN IS THE COPYRIGHT OF SILVER THOMAS HANLEY AND BATES SMART AND SHALL NOT BE REPRODUCED WITHOUT THEIR WRITTEN PERMISSION

PROJECT MANAGER

TSA

MANAGEMENT

CLIENT

NSW GOVERNMENT

Health Infrastructure

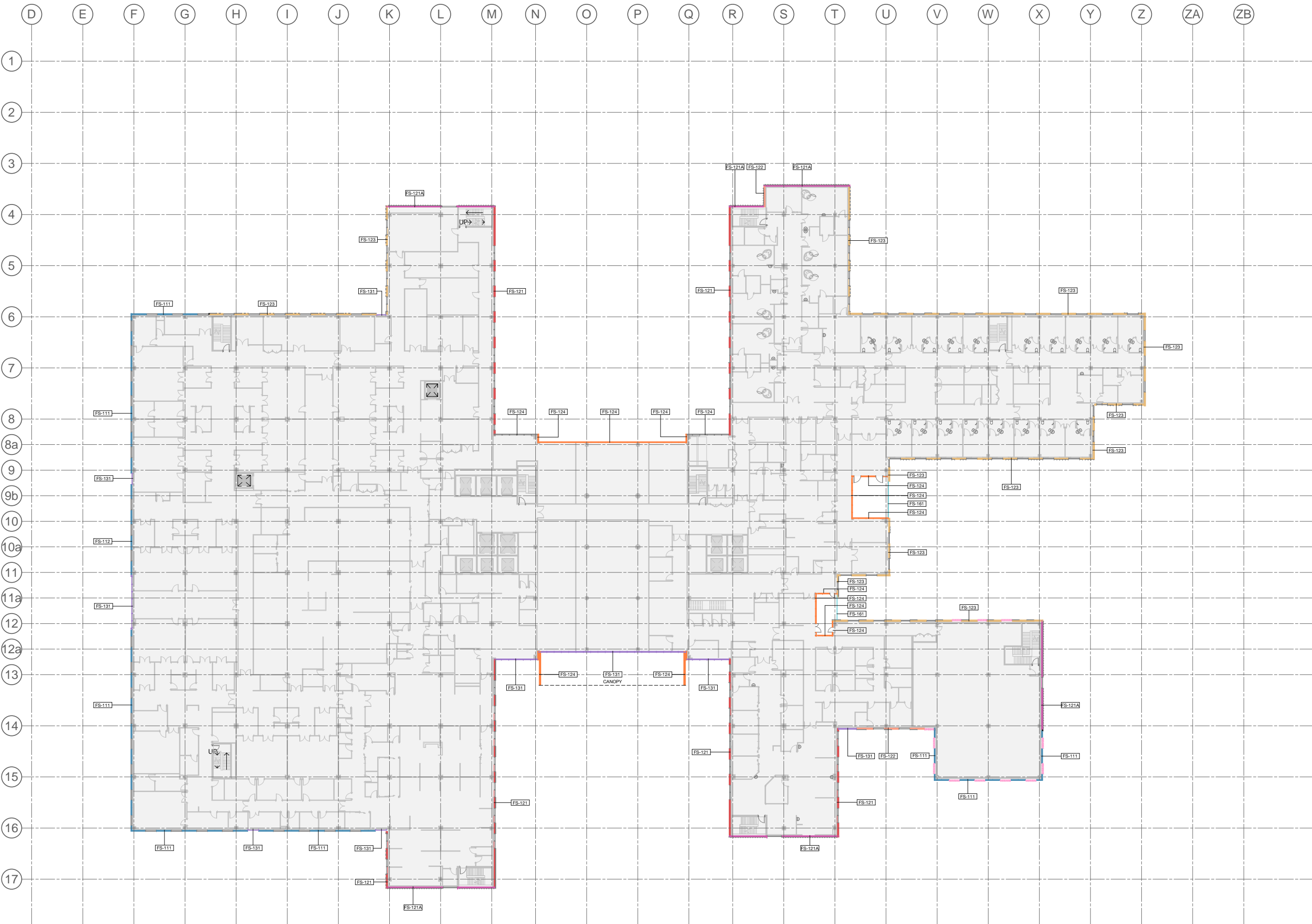
Health Northern NSW Local Health District

## TWEED VALLEY HOSPITAL

DRAWING TITLE			
FACADE TYPE PLANS MHB - GROUND LEVEL			
SCALE	DATE	DRAWN BY	CHECKED
1 : 300 @ A1	06/09/19	MC	BS
1 : 600 @ A3			
PROJECT No	DRAWING No		REVISION
10363	STB-AR-SKE-MHB-2100001		1

BM 350 / Tweed Valley Hospital / V1. BS FACADE. R2019.01





1 L 01 - Facade Type  
Plan 1 : 300

FACADE TYPE SCOPING LEGEND			
<div></div> FS-111	PRECAST CONCRETE PANEL, PIGMENTED, OFF FORM FINISH, HIGH PERFORMANCE GLAZING ALUMINIUM MPC FRAME, SHADOWBOX SPANDREL GLASS OR ALUMINIUM FLAT PANEL MPC, ALUMINIUM LOUVRES TO PLANT AREAS, MPC	<div></div> FS-113	PRECAST CONCRETE PANEL, NON-PIGMENTED / BASEMENT WALL/SERVICE AREAS (NO GLAZING), ALUMINIUM LOUVRES TO PLANT AREAS, MPC
<div></div> FS-112	PRECAST CONCRETE PANEL, NON-PIGMENTED, OFF FORM FINISH, HIGH PERFORMANCE GLAZING ALUMINIUM MPC FRAME, SHADOWBOX SPANDREL GLASS OR ALUMINIUM FLAT PANEL MPC, ALUMINIUM LOUVRES TO PLANT AREAS, MPC	<div></div> FS-121	LOW PROFILE METAL CLADDING, METALLIC COLORBOND, COLOUR TBC, WITH HIGH PERFORMANCE VISION GLASS AND SHADOWBOX SPANDREL GLASS IN POWDERCOAT ALUMINIUM FRAME MPC, ALUMINIUM LOUVRES TO PLANT AREAS, MPC
<div></div> FS-121A	GABLE END, HIGH PROFILE METAL CLADDING SOLID / PERFORATED TO OPEN STAIR, WITH HIGH PERFORMANCE VISION GLASS / SHADOWBOX SPANDREL GLASS IN POWDERCOAT ALUMINIUM FRAME MPC.	<div></div> FS-122	LOW PROFILE METAL CLADDING, METALLIC COLORBOND, COLOUR TBC, WITH HIGH PERFORMANCE VISION GLASS AND ALTERNATING METAL SPANDREL MPC/ SHADOWBOX SPANDREL GLASS IN POWDERCOAT ALUMINIUM FRAME MPC, ALUMINIUM LOUVRES TO PLANT AREAS, MPC
<div></div> FS-123	LOW PROFILE METAL CLADDING, METALLIC COLORBOND, COLOUR TBC, HIGH PERFORMANCE VISION GLAZING MPC / METAL SPANDREL MPC, IN ALUMINIUM FRAME MPC, ALUMINIUM LOUVRES TO PLANT AREAS, MPC	<div></div> FS-124	SILL TO CEILING WINDOW WALL, HIGH PERFORMANCE VISION GLASS / ALUMINIUM SPANDREL PANELS MPC, ALUMINIUM LOUVRES TO PLANT AREAS, MPC.
<div></div> FS-131	CURTAIN WALL FAÇADE: WITH HIGH PERFORMANCE VISION GLASS AND SHADOWBOX SPANDREL GLASS IN POWDERCOAT ALUMINIUM FRAME MPC, ALUMINIUM LOUVRES TO PLANT AREAS, MPC, INCLUDES AIRLOCKS AND METAL CLAD PORTAL	<div></div> FS-132	LOW PROFILE METAL CLADDING, METALLIC COLORBOND, COLOUR TBC, HIGH PERFORMANCE VISION GLAZING MPC / METAL SPANDREL MPC, IN ALUMINIUM FRAME MPC, ALUMINIUM LOUVRES TO PLANT AREAS, MPC
<div></div> FS-141	PLANT LOUVRE	<div></div> FS-151	GROUND LEVEL CANOPIES TBC
<div></div> FS-161	GLASS BALUSTRADES TBC	<div></div> FS-162	VERTICAL CHEVRON LOUVRE SCREEN
MPC = Metallic Powdercoat, Colour TBC.			

KEY PLAN



REV	DESCRIPTION	DRN	DATE
1	ISSUED FOR SSD 2	BM	06/09/19

FACADE AREAS

Facade Type	Area	Area %
FS-111	3025.68 m <sup>2</sup>	9.82%
FS-112	2954.68 m <sup>2</sup>	9.59%
FS-113	2782.56 m <sup>2</sup>	9.03%
FS-121	4271.62 m <sup>2</sup>	13.86%
FS-121A	2751.89 m <sup>2</sup>	8.93%
FS-122	1857.73 m <sup>2</sup>	6.03%
FS-123	8888.92 m <sup>2</sup>	22.38%
FS-124	2486.13 m <sup>2</sup>	8.07%
FS-131	2151.76 m <sup>2</sup>	6.98%
FS-141	233.42 m <sup>2</sup>	0.76%
FS-161	96.24 m <sup>2</sup>	0.31%
FS-162	1313.69 m <sup>2</sup>	4.26%
	30824.38 m <sup>2</sup>	

\* Excludes Canopies  
\* Includes Stage 2B Expansion

COPYRIGHT

ALL RIGHTS RESERVED. THIS WORK IS COPYRIGHT AND CANNOT BE REPRODUCED OR COPIED IN ANY FORM OR BY ANY MEANS (GRAPHIC, ELECTRONIC OR MECHANICAL, INCLUDING PHOTOCOPYING) WITHOUT THE WRITTEN PERMISSION OF THE PRINCIPAL. UNDER THE TERMS OF THE CONTRACT, ANY LICENCE, EXPRESS OR IMPLIED, TO USE THE DOCUMENT FOR ANY PURPOSE WHATSOEVER IS RESTRICTED TO THE TERMS OF THE AGREEMENT OR IMPLIED AGREEMENT WITH THE PRINCIPAL UNDER THE TERMS OF THE CONTRACT.

DIMENSIONS

USE FIGURED DIMENSIONS. DO NOT SCALE. CONTRACTORS MUST VERIFY ALL DIMENSIONS ON THE SITE BEFORE COMMENCING ANY WORK OR MAKING ANY SHOP DRAWING WHICH MUST BE SUBMITTED AND REVIEWED BEFORE MANUFACTURE.

FIXTURES, FITTINGS & EQUIPMENT SPECIFICATIONS

SUBSTITUTE FF&E EQUIPMENT SPECIFICATIONS  
THE FIT-OUT DESIGN AND DOCUMENTATION HAS BEEN COMPLETED ON THE BASIS OF FF&E AND EQUIPMENT ADVISED TO THIS OFFICE AT THE TIME OF BRIEFING THE DESIGN. THE DESIGN PROVISIONS FOR FF&E AND EQUIPMENT INCORPORATES SPATIAL ALLOCATIONS, SERVICING, LOADING AND ACCESS CLEARANCES AND WHERE APPROPRIATE SERVICES REQUIREMENTS, HAVING DUE REGARD FOR SURROUNDING FIXTURES AND FITTINGS. IT SHOULD BE NOTED THAT SUBSTITUTE FF&E OR EQUIPMENT WITH ALTERNATE SPECIFICATIONS SHOULD NOT BE PROCURED PRIOR TO VALIDATING THESE SPECIFICATIONS AGAINST THE ITEM CONTROL, SCHEDULE AND DESIGN PROVISIONS IN THE MODEL. THIS OFFICE ACCEPTS NO RESPONSIBILITY FOR THE PROCUREMENT OF SUBSTITUTE FF&E AND EQUIPMENT WHICH HAS NOT BEEN REVIEWED AND VALIDATED AGAINST THE ORIGINAL DESIGN PROVISIONS.

SERVICE POINTS DISCLAIMER

THE SERVICE POINTS IDENTIFIED ON THESE DRAWINGS HAVE BEEN OVERLAYED FROM THE BUILDING SERVICES ENGINEERING MODEL, AND ARE PROVIDED FOR INFORMATION AND SET-OUT PURPOSES ONLY. WE HAVE BEEN ADVISED BY THE SERVICES ENGINEERS THAT THE POINTS REPRESENTED ON THESE DRAWINGS ARE CORRECT AT THE TIME OF PUBLICATION. THIS OFFICE DOES NOT WARRANT THE ACCURACY OF THIS DATA. REFER TO THE BUILDING SERVICES ENGINEERING DOCUMENTATION FOR THE INSTALLATION OF THE SERVICES POINTS, AND THE INTERFACE BETWEEN THE SERVICES POINTS AND THE RESPECTIVE ENGINEERING SYSTEMS.

ISSUED FOR INFORMATION

ARCHITECTS

STH

BATESSMART.

ABN: 21 134 476 905  
LEVEL 4, 89 YORK STREET  
SYDNEY NSW 2000, AUSTRALIA  
PH: (02) 8299 4600 FAX: (02) 9555 2455

M12147

43 BRISBANE STREET,  
SURRY HILLS NSW 2010  
ABN: 66 054 740 866 PH: (02) 8354 5100  
E: syd@batesmart.com.au

THIS ARCHITECTURAL DESIGN IS THE COPYRIGHT OF SILVER THOMAS HANLEY AND BATES SMART AND SHALL NOT BE REPRODUCED WITHOUT THEIR WRITTEN PERMISSION

PROJECT MANAGER

TSA

MANAGEMENT

CLIENT

NSW GOVERNMENT

Health Infrastructure

Health Northern NSW Local Health District

TWEED VALLEY HOSPITAL

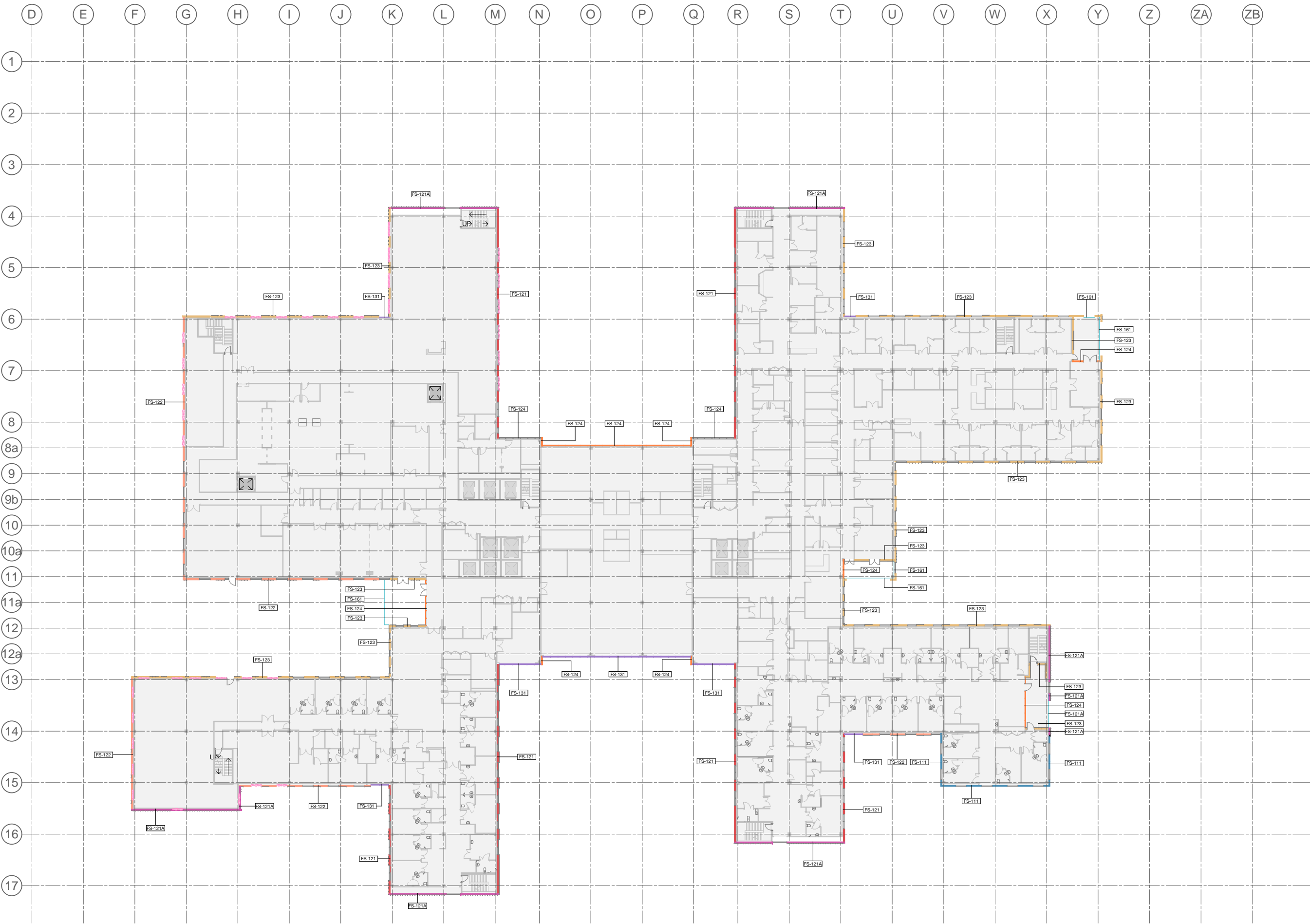
DRAWING TITLE

FACADE TYPE PLANS  
MHB - LEVEL 01

SCALE	DATE	DRAWN BY	CHECKED
1 : 300 @ A1	06/09/19	MC	BS
1 : 600 @ A3			

PROJECT No	DRAWING No	REVISION
10363	STB-AR-SKE-MHB-2101001	1

BM 350/Tweed Valley Hospital/TVL\_BS\_FACADE\_R2019.dwg



1 L 02 - Facade Type  
Plan 1 : 300

FACADE TYPE SCOPING LEGEND			
<div></div> FS-111	PRECAST CONCRETE PANEL, PIGMENTED, OFF FORM FINISH, HIGH PERFORMANCE GLAZING ALUMINIUM MPC FRAME, SHADOWBOX SPANDREL GLASS OR ALUMINIUM FLAT PANEL MPC, ALUMINIUM LOUVRES TO PLANT AREAS, MPC	<div></div> FS-113	PRECAST CONCRETE PANEL, NON-PIGMENTED / BASEMENT WALL/SERVICE AREAS (NO GLAZING), ALUMINIUM LOUVRES TO PLANT AREAS, MPC
<div></div> FS-112	PRECAST CONCRETE PANEL, NON-PIGMENTED, OFF FORM FINISH, HIGH PERFORMANCE GLAZING ALUMINIUM MPC FRAME, SHADOWBOX SPANDREL GLASS OR ALUMINIUM FLAT PANEL MPC, ALUMINIUM LOUVRES TO PLANT AREAS, MPC	<div></div> FS-121	LOW PROFILE METAL CLADDING, METALLIC COLORBOND, COLOUR TBC, WITH HIGH PERFORMANCE VISION GLASS AND SHADOWBOX SPANDREL GLASS IN POWDERCOAT ALUMINIUM FRAME MPC, ALUMINIUM LOUVRES TO PLANT AREAS, MPC
<div></div> FS-121A	GABLE END: HIGH PROFILE METAL CLADDING SOLID / PERFORATED TO OPEN STAIR, WITH HIGH PERFORMANCE VISION GLASS / SHADOWBOX SPANDREL GLASS IN POWDERCOAT ALUMINIUM FRAME MPC.	<div></div> FS-122	LOW PROFILE METAL CLADDING, METALLIC COLORBOND, COLOUR TBC, WITH HIGH PERFORMANCE VISION GLASS AND ALTERNATING METAL SPANDREL MPC/ SHADOWBOX SPANDREL GLASS IN POWDERCOAT ALUMINIUM FRAME MPC, ALUMINIUM LOUVRES TO PLANT AREAS, MPC
<div></div> FS-123	LOW PROFILE METAL CLADDING, METALLIC COLORBOND, COLOUR TBC, HIGH PERFORMANCE VISION GLAZING MPC / METAL SPANDREL MPC IN ALUMINIUM FRAME MPC, ALUMINIUM LOUVRES TO PLANT AREAS, MPC	<div></div> FS-124	SILL TO CEILING WINDOW WALL, HIGH PERFORMANCE VISION GLASS / ALUMINIUM SPANDREL PANELS MPC, ALUMINIUM LOUVRES TO PLANT AREAS, MPC.
<div></div> FS-131	CURTAIN WALL FAÇADE: WITH HIGH PERFORMANCE VISION GLASS AND SHADOWBOX SPANDREL GLASS IN POWDERCOAT ALUMINIUM FRAME MPC, ALUMINIUM LOUVRES TO PLANT AREAS, MPC. INCLUDES AIRLOCKS AND METAL CLAD PORTAL	<div></div> FS-131	CURTAIN WALL FAÇADE: WITH HIGH PERFORMANCE VISION GLASS AND SHADOWBOX SPANDREL GLASS IN POWDERCOAT ALUMINIUM FRAME MPC, ALUMINIUM LOUVRES TO PLANT AREAS, MPC. INCLUDES AIRLOCKS AND METAL CLAD PORTAL
<div></div> FS-141	PLANT LOUVRE	<div></div> FS-151	GROUND LEVEL CANOPIES TBC
<div></div> FS-161	GLASS BALUSTRADES TBC	<div></div> FS-162	VERTICAL CHEVRON LOUVRE SCREEN
MPC = Metallic Powdercoat. Colour TBC.			

KEY PLAN



REV	DESCRIPTION	DRN	DATE
1	ISSUED FOR SSD 2	BM	06/09/19

FACADE AREAS

Facade Type	Area	Area %
FS-111	3025.68 m <sup>2</sup>	9.82%
FS-112	2954.68 m <sup>2</sup>	9.59%
FS-113	2782.56 m <sup>2</sup>	9.03%
FS-121	4271.62 m <sup>2</sup>	13.86%
FS-121A	2751.89 m <sup>2</sup>	8.93%
FS-122	1857.73 m <sup>2</sup>	6.03%
FS-123	8888.92 m <sup>2</sup>	22.38%
FS-124	2486.13 m <sup>2</sup>	8.07%
FS-131	2151.76 m <sup>2</sup>	6.98%
FS-141	233.42 m <sup>2</sup>	0.76%
FS-161	96.24 m <sup>2</sup>	0.31%
FS-162	1313.69 m <sup>2</sup>	4.26%
	30824.38 m <sup>2</sup>	

\* Excludes Canopies  
\* Includes Stage 2B Expansion

COPYRIGHT

ALL RIGHTS RESERVED. THIS WORK IS COPYRIGHT AND CANNOT BE REPRODUCED OR COPIED IN ANY FORM OR BY ANY MEANS (GRAPHIC, ELECTRONIC OR MECHANICAL, INCLUDING PHOTOCOPYING) WITHOUT THE WRITTEN PERMISSION OF THE PRINCIPAL. UNDER THE TERMS OF THE CONTRACT, ANY LICENCE, EXPRESS OR IMPLIED, TO USE THE DOCUMENT FOR ANY PURPOSE WHATSOEVER IS RESTRICTED TO THE TERMS OF THE AGREEMENT OR IMPLIED AGREEMENT WITH THE PRINCIPAL UNDER THE TERMS OF THE CONTRACT.

DIMENSIONS

USE FIGURED DIMENSIONS. DO NOT SCALE. CONTRACTORS MUST VERIFY ALL DIMENSIONS ON THE SITE BEFORE COMMENCING ANY WORK OR MAKING ANY SHOP DRAWING WHICH MUST BE SUBMITTED AND REVIEWED BEFORE MANUFACTURE.

FIXTURES, FITTINGS & EQUIPMENT SPECIFICATIONS

SUBSTITUTE FF&E EQUIPMENT SPECIFICATIONS  
THE FIT-OUT DESIGN AND DOCUMENTATION HAS BEEN COMPLETED ON THE BASIS OF FF&E AND EQUIPMENT ADVISED TO THIS OFFICE AT THE TIME OF BRIEFING THE DESIGN. THE DESIGN PROVIDES FOR FF&E AND EQUIPMENT INCORPORATES SPATIAL ALLOCATIONS, SERVICING, LOADING AND ACCESS CLEARANCES AND WHERE APPROPRIATE SERVICES REQUIREMENTS, HAVING DUE REGARD FOR SURROUNDING FIXTURES AND FITTINGS. IT SHOULD BE NOTED THAT SUBSTITUTE FF&E OR EQUIPMENT WITH ALTERNATE SPECIFICATIONS SHOULD NOT BE PROCURED PRIOR TO VALIDATING THESE SPECIFICATIONS AGAINST THE ITEM CONTROL, SCHEDULE AND DESIGN PROVISIONS IN THE MODEL. THIS OFFICE ACCEPTS NO RESPONSIBILITY FOR THE PROCUREMENT OF SUBSTITUTE FF&E AND EQUIPMENT WHICH HAS NOT BEEN REVIEWED AND VALIDATED AGAINST THE ORIGINAL DESIGN PROVISIONS.

SERVICE POINTS DISCLAIMER

THE SERVICE POINTS IDENTIFIED ON THESE DRAWINGS HAVE BEEN OVERLAYED FROM THE BUILDING SERVICES ENGINEERING MODEL, AND ARE PROVIDED FOR INFORMATION AND SET-OUT PURPOSES ONLY. WE HAVE BEEN ADVISED BY THE SERVICES ENGINEERS THAT THE POINTS REPRESENTED ON THESE DRAWINGS ARE CORRECT AT THE TIME OF PUBLICATION. THIS OFFICE DOES NOT WARRANT THE ACCURACY OF THIS DATA. REFER TO THE BUILDING SERVICES ENGINEERING DOCUMENTATION FOR THE INSTALLATION OF THE SERVICES POINTS, AND THE INTERFACE BETWEEN THE SERVICES POINTS AND THE RESPECTIVE ENGINEERING SYSTEMS.

ISSUED FOR INFORMATION

ARCHITECTS



M12147  
ABN: 21 134 476 965  
LEVEL 4, 89 YORK STREET  
SYDNEY NSW 2000, AUSTRALIA  
PH: (02) 8299 4600 FAX: (02) 9555 2455  
E: syd@batesmart.com.au  
43 BRISBANE STREET,  
SURRY HILLS NSW 2010  
ABN: 66 054 740 866 PH: (02) 8354 5100  
E: syd@batesmart.com.au

THIS ARCHITECTURAL DESIGN IS THE COPYRIGHT OF SILVER THOMAS HANLEY AND BATES SMART AND SHALL NOT BE REPRODUCED WITHOUT THEIR WRITTEN PERMISSION

PROJECT MANAGER



CLIENT



PROJECT

TWEED VALLEY HOSPITAL

DRAWING TITLE

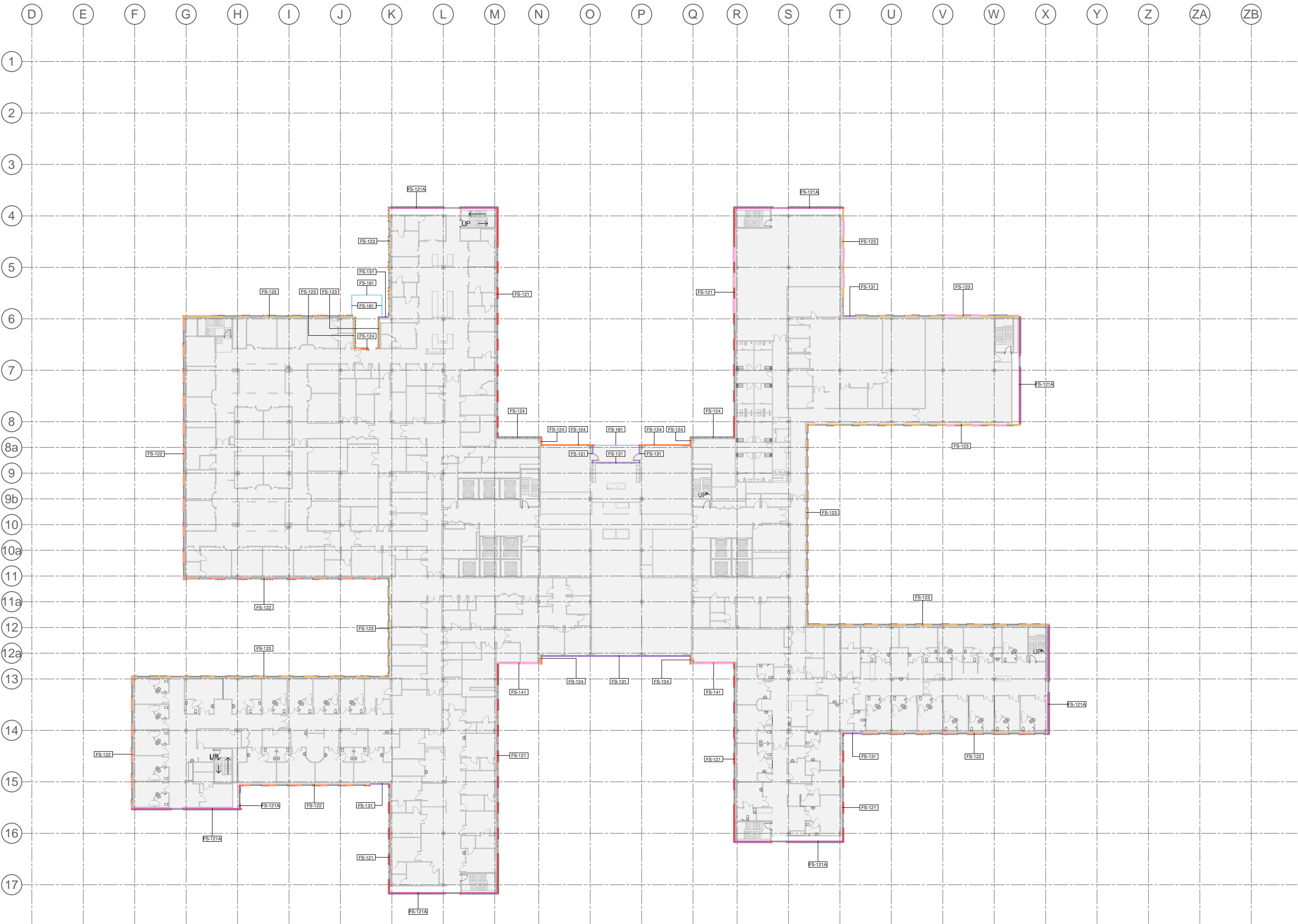
FACADE TYPE PLANS

MHB - LEVEL 02

SCALE 1 : 300 @ A1 06/09/19 DRAWN BY MC CHECKED BS

PROJECT No 10363 DRAWING No STB-AR-SKE-MHB-2102001 REVISION 1





1 L 03 - Facade Type  
Plan 1 : 300

FACADE TYPE SCOPING LEGEND			
<div></div> FS-111	PRECAST CONCRETE PANEL, PIGMENTED. OFF FORM FINISH. HIGH PERFORMANCE GLAZING ALUMINIUM MPC FRAME. SHADOWBOX SPANDREL GLASS OR ALUMINIUM FLAT PANEL MPC. ALUMINIUM LOUVRES TO PLANT AREAS, MPC	<div></div> FS-113	PRECAST CONCRETE PANEL, NON-PIGMENTED / BASEMENT WALL/SERVICE AREAS (NO GLAZING). ALUMINIUM LOUVRES TO PLANT AREAS, MPC
<div></div> FS-112	PRECAST CONCRETE PANEL, NON-PIGMENTED. OFF FORM FINISH. HIGH PERFORMANCE GLAZING ALUMINIUM MPC FRAME. SHADOWBOX SPANDREL GLASS OR ALUMINIUM FLAT PANEL MPC. ALUMINIUM LOUVRES TO PLANT AREAS, MPC	<div></div> FS-121	LOW PROFILE METAL CLADDING. METALLIC COLORBOND, COLOUR TBC. WITH HIGH PERFORMANCE VISION GLASS AND SHADOWBOX SPANDREL GLASS IN POWDERCOAT ALUMINIUM FRAME MPC. ALUMINIUM LOUVRES TO PLANT AREAS, MPC
<div></div> FS-121A	GABLE END: HIGH PROFILE METAL CLADDING SOLID / PERFORATED TO OPEN STAIR. WITH HIGH PERFORMANCE VISION GLASS / SHADOWBOX SPANDREL GLASS IN POWDERCOAT ALUMINIUM FRAME MPC.	<div></div> FS-122	LOW PROFILE METAL CLADDING. METALLIC COLORBOND, COLOUR TBC. WITH HIGH PERFORMANCE VISION GLASS AND ALTERNATING METAL SPANDREL MPC / SHADOWBOX SPANDREL GLASS IN POWDERCOAT ALUMINIUM FRAME MPC. ALUMINIUM LOUVRES TO PLANT AREAS, MPC
<div></div> FS-123	LOW PROFILE METAL CLADDING. METALLIC COLORBOND, COLOUR TBC. HIGH PERFORMANCE VISION GLAZING MPC / METAL SPANDREL MPC. IN ALUMINIUM FRAME MPC. ALUMINIUM LOUVRES TO PLANT AREAS, MPC	<div></div> FS-124	SILL TO CEILING WINDOW WALL. HIGH PERFORMANCE VISION GLASS / ALUMINIUM SPANDREL PANELS MPC. ALUMINIUM LOUVRES TO PLANT AREAS, MPC.
<div></div> FS-131	CURTAIN WALL FAÇADE: WITH HIGH PERFORMANCE VISION GLASS AND SHADOWBOX SPANDREL GLASS IN POWDERCOAT ALUMINIUM FRAME MPC. INCLUDES AIRLOCKS AND METAL CLAD PORTAL	<div></div> FS-141	PLANT LOUVRE
<div></div> FS-151	GROUND LEVEL CANOPIES TBC	<div></div> FS-161	GLASS BALUSTRADES TBC
<div></div> FS-162	VERTICAL CHEVRON LOUVRE SCREEN		
MPC = Metallic Powdercoat. Colour TBC.			

KEY PLAN			
REV	DESCRIPTION	DRN	DATE
1	ISSUED FOR SSD 2	BM	06/09/19

FACADE AREAS		
Facade Type	Area	Area %
FS-111	3025.68 m²	9.82%
FS-112	2954.68 m²	9.59%
FS-113	2782.56 m²	9.03%
FS-121	4271.62 m²	13.86%
FS-121A	2751.89 m²	8.93%
FS-122	1857.73 m²	6.03%
FS-123	8898.92 m²	22.38%
FS-124	2486.13 m²	8.07%
FS-131	2151.76 m²	6.98%
FS-141	233.42 m²	0.76%
FS-161	96.24 m²	0.31%
FS-162	1313.69 m²	4.26%
	30824.38 m²	

\* Excludes Canopies  
\* Includes Stage 2B Expansion

#### COPYRIGHT

ALL RIGHTS RESERVED. THIS WORK IS COPYRIGHT AND CANNOT BE REPRODUCED OR COPIED IN ANY FORM OR BY ANY MEANS (GRAPHIC, ELECTRONIC OR MECHANICAL, INCLUDING PHOTOCOPYING) WITHOUT THE WRITTEN PERMISSION OF THE PRINCIPAL UNDER THE TERMS OF THE CONTRACT. ANY LICENCE, EXPRESS OR IMPLIED, TO USE THE DOCUMENT FOR ANY PURPOSE WHATSOEVER IS RESTRICTED TO THE TERMS OF THE AGREEMENT OR IMPLIED AGREEMENT WITH THE PRINCIPAL UNDER THE TERMS OF THE CONTRACT.

#### DIMENSIONS

USE FIGURED DIMENSIONS. DO NOT SCALE. CONTRACTORS MUST VERIFY ALL DIMENSIONS ON THE SITE BEFORE COMMENCING ANY WORK OR MAKING ANY SHOP DRAWING WHICH MUST BE SUBMITTED AND REVIEWED BEFORE MANUFACTURE.

#### FIXTURES, FITTINGS & EQUIPMENT SPECIFICATIONS

SUBSTITUTE FF&E EQUIPMENT SPECIFICATIONS  
THE FIT-OUT DESIGN AND DOCUMENTATION HAS BEEN COMPLETED ON THE BASIS OF FF&E AND EQUIPMENT ADVISED TO THIS OFFICE AT THE TIME OF BRIEFING THE DESIGN. THE DESIGN PROVISIONS FOR FF&E AND EQUIPMENT INCORPORATES SPATIAL ALLOCATIONS, SERVICING, LOADING AND ACCESS CLEARANCES AND WHERE APPROPRIATE SERVICES REQUIREMENTS, HAVING DUE REGARD FOR SURROUNDING FIXTURES AND FITTINGS. IT SHOULD BE NOTED THAT SUBSTITUTE FF&E OR EQUIPMENT WITH ALTERNATE SPECIFICATIONS SHOULD NOT BE PROCURED PRIOR TO VALIDATING THESE SPECIFICATIONS AGAINST THE ITEM CONTROL, SCHEDULE AND DESIGN PROVISIONS IN THE MODEL. THIS OFFICE ACCEPTS NO RESPONSIBILITY FOR THE PROCUREMENT OF SUBSTITUTE FF&E AND EQUIPMENT WHICH HAS NOT BEEN REVIEWED AND VALIDATED AGAINST THE ORIGINAL DESIGN PROVISIONS.

#### SERVICE POINTS DISCLAIMER

THE SERVICE POINTS IDENTIFIED ON THESE DRAWINGS HAVE BEEN OVERLAYED FROM THE BUILDING SERVICES ENGINEERING MODEL AND ARE PROVIDED FOR INFORMATION AND SET-OUT PURPOSES ONLY. WE HAVE BEEN ADVISED BY THE SERVICES ENGINEERS THAT THE POINTS REPRESENTED ON THESE DRAWINGS ARE CORRECT AT THE TIME OF PUBLICATION. THIS OFFICE DOES NOT WARRANT THE ACCURACY OF THIS DATA. REFER TO THE BUILDING SERVICES ENGINEERING DOCUMENTATION FOR THE INSTALLATION OF THE SERVICES POINTS, AND THE INTERFACE BETWEEN THE SERVICES POINTS AND THE RESPECTIVE ENGINEERING SYSTEMS.

#### ISSUED FOR INFORMATION

ARCHITECTS



ABN: 21 134 476 905  
LEVEL 4, 89 YORK STREET  
SYDNEY NSW 2000, AUSTRALIA  
PH: (02) 8299 4600 FAX: (02) 9885 2455  
E: syd@batesmart.com.au

43 BRISBANE STREET,  
SURRY HILLS NSW 2010  
ABN: 66 054 740 866 PH: (02) 8354 5100  
E: syd@batesmart.com.au

THIS ARCHITECTURAL DESIGN IS THE COPYRIGHT OF SILVER THOMAS HANLEY AND BATES SMART AND SHALL NOT BE REPRODUCED WITHOUT THEIR WRITTEN PERMISSION

PROJECT MANAGER



CLIENT



PROJECT

#### TWEED VALLEY HOSPITAL

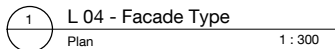
DRAWING TITLE

#### FACADE TYPE PLANS MHB - LEVEL 03

SCALE	DATE	DRAWN BY	CHECKED
1 : 300 @ A1	06/09/19	MC	BS
1 : 600 @ A3			
PROJECT No	DRAWING No	REVISION	
10363	STB-AR-SKE-MHB-2103001	1	

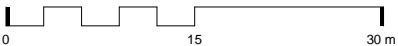






<b>FS-111</b> PRECAST CONCRETE PANEL, PIGMENTED, OFF FORM FINISH, HIGH PERFORMANCE GLAZING ALUMINIUM MPC FRAME, SHADOWBOX SPANDREL GLASS OR ALUMINIUM FLAT PANEL MPC, ALUMINIUM LOUVRES TO PLANT AREAS, MPC	<b>FS-113</b> PRECAST CONCRETE PANEL, NON-PIGMENTED / BASEMENT WALL/SERVICE AREAS (NO GLAZING), ALUMINIUM LOUVRES TO PLANT AREAS, MPC	<b>FS-122</b> LOW PROFILE METAL CLADDING, METALLIC COLORBOND, COLOUR TBC, WITH HIGH PERFORMANCE VISION GLASS AND ALTERNATING METAL SPANDREL MPC/ SHADOWBOX SPANDREL GLASS IN POWDERCOAT ALUMINIUM FRAME, MPC, ALUMINIUM LOUVRES TO PLANT AREAS, MPC	<b>FS-131</b> CURTAIN WALL FACADE, WITH HIGH PERFORMANCE VISION GLASS AND SHADOWBOX SPANDREL GLASS IN POWDERCOAT ALUMINIUM FRAME, MPC, ALUMINIUM LOUVRES TO PLANT AREAS, MPC, INCLUDES AIRLOCKS AND METAL CLAD PORTAL
<b>FS-112</b> PRECAST CONCRETE PANEL, NON-PIGMENTED, OFF FORM FINISH, HIGH PERFORMANCE GLAZING ALUMINIUM MPC FRAME, SHADOWBOX SPANDREL GLASS OR ALUMINIUM FLAT PANEL MPC, ALUMINIUM LOUVRES TO PLANT AREAS, MPC	<b>FS-121</b> LOW PROFILE METAL CLADDING, METALLIC COLORBOND, COLOUR TBC, WITH HIGH PERFORMANCE VISION GLASS AND SHADOWBOX SPANDREL GLASS IN POWDERCOAT ALUMINIUM FRAME MPC, ALUMINIUM LOUVRES TO PLANT AREAS, MPC	<b>FS-123</b> LOW PROFILE METAL CLADDING, METALLIC COLORBOND, COLOUR TBC, HIGH PERFORMANCE VISION GLAZING MPC/ METAL SPANDREL FRAME MPC, ALUMINIUM LOUVRES TO PLANT AREAS, MPC	<b>FS-141</b> PLANT LOUVRE
	<b>FS-121A</b> GABLE END: HIGH PROFILE METAL CLADDING SOLID / FRAME FINISHED TO OPEN STEAR, WITH HIGH PERFORMANCE VISION GLASS / SHADOWBOX SPANDREL GLASS IN POWDERCOAT ALUMINIUM FRAME MPC	<b>FS-124</b> SILL TO CEILING WINDOW WALL, HIGH PERFORMANCE VISION GLASS / ALUMINIUM SPANDREL PANELS, MPC, ALUMINIUM LOUVRES TO PLANT AREAS, MPC	<b>FS-151</b> GROUND LEVEL CANOPIES TBC
			<b>FS-161</b> GLASS BALUSTRADES TBC
			<b>FS-162</b> VERTICAL CHEVRON LOUVER SCREEN

MPC = Metallic Powdercoat, Colour TBC.



FAÇADE AREAS		
Facade Type	Area	Area %
FS-111	3025.68 m <sup>2</sup>	9.82%
FS-112	2954.68 m <sup>2</sup>	9.50%
FS-113	2782.56 m <sup>2</sup>	9.03%
FS-121	2771.62 m <sup>2</sup>	13.86%
FS-121A	4251.89 m <sup>2</sup>	8.93%
FS-122	1857.78 m <sup>2</sup>	6.03%
FS-123	6808.92 m <sup>2</sup>	22.38%
FS-124	2486.13 m <sup>2</sup>	8.07%
FS-131	2151.76 m <sup>2</sup>	6.98%
FS-141	233.42 m <sup>2</sup>	0.76%
FS-161	96.24 m <sup>2</sup>	0.31%
FS-162	1313.69 m <sup>2</sup>	4.26%
	30824.38 m <sup>2</sup>	

### SERVICE POINTS DISCLAIMER

THE SERVICE POINTS IDENTIFIED ON THESE DRAWINGS HAVE BEEN OVERLAYED FROM THE BUILDING SERVICES ENGINEERING MODEL, AND ARE PROVIDED FOR INFORMATION AND SET-OUT PURPOSES ONLY. WE HAVE BEEN ADVISED BY THE SERVICES ENGINEERS THAT THE POINTS REPRESENTED ON THESE DRAWINGS ARE CORRECT AT THE TIME OF PUBLICATION. THIS OFFICE DOES NOT WARRANT THE ACCURACY OF THIS DATA. REFER TO THE BUILDING SERVICES ENGINEERING DOCUMENTATION FOR THE INSTALLATION OF THE SERVICE POINTS, AND THE INTERFACE BETWEEN THE SERVICE POINTS AND THE RESPECTIVE ENGINEERING SYSTEMS.

**M12147**

ABN: 21 134 476 065  
LEVEL 4, 89 YORK STREET  
SYDNEY NSW 2000, AUSTRALIA  
PH: (02) 8299 4600 FAX: (03) 9885 2455

43 BRISBANE STREET,  
SURRY HILLS, NSW 2010  
ABN: 68 094 740 986 PH: (02) 8354 5100  
E: [syd@bathesmart.com.au](mailto:syd@bathesmart.com.au)

THIS ARCHITECTURAL DESIGN IS THE COPYRIGHT OF SILVER THOMAS HANLEY AND BATES SMART AND SHALL NOT BE REPRODUCED WITHOUT THEIR WRITTEN PERMISSION



CLIENT



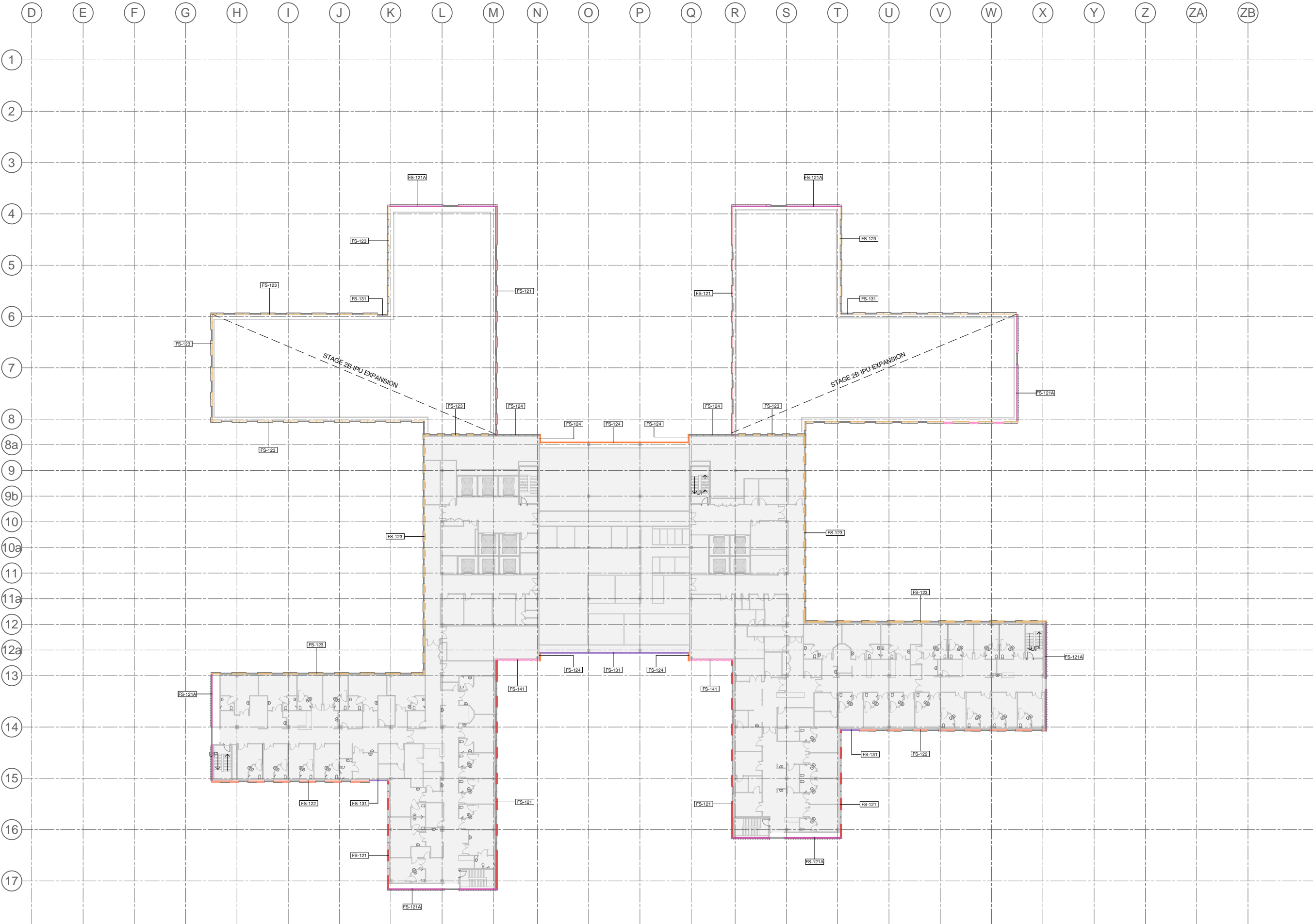
PROJECT

## DRAWING TITLE

FACADE TYPE PLANS  
MHB - LEVEL 04

SCALE	DATE	DRAWN BY	CHECKED
1:300@A1	06/09/19	MC	BS

PROJECT No	DRAWING No	REVISION
10363	STB-AR-SKE-MHB-2104001	1



1 L 05 - Facade Type  
Plan 1 : 300

FACADE TYPE SCOPING LEGEND			
<div>FS-111</div> PRECAST CONCRETE PANEL, PIGMENTED, OFF FORM FINISH, HIGH PERFORMANCE GLAZING ALUMINIUM MPC FRAME, SHADOWBOX SPANDREL GLASS OR ALUMINIUM FLAT PANEL MPC, ALUMINIUM LOUVRES TO PLANT AREAS, MPC	<div>FS-113</div> PRECAST CONCRETE PANEL, NON-PIGMENTED / BASEMENT WALL/SERVICE AREAS (NO GLAZING), ALUMINIUM LOUVRES TO PLANT AREAS, MPC	<div>FS-122</div> LOW PROFILE METAL CLADDING, METALLIC COLORBOND, COLOUR TBC, WITH HIGH PERFORMANCE VISION GLASS AND ALTERNATING METAL SPANDREL MPC/ SHADOWBOX SPANDREL GLASS IN POWDERCOAT ALUMINIUM FRAME MPC, ALUMINIUM LOUVRES TO PLANT AREAS, MPC	<div>FS-131</div> CURTAIN WALL FAÇADE, WITH HIGH PERFORMANCE VISION GLASS AND SHADOWBOX SPANDREL GLASS IN POWDERCOAT ALUMINIUM FRAME MPC, ALUMINIUM LOUVRES TO PLANT AREAS, MPC, INCLUDES AIRLOCKS AND METAL CLAD PORTAL
<div>FS-112</div> PRECAST CONCRETE PANEL, NON-PIGMENTED, OFF FORM FINISH, HIGH PERFORMANCE GLAZING ALUMINIUM MPC FRAME, SHADOWBOX SPANDREL GLASS OR ALUMINIUM FLAT PANEL MPC, ALUMINIUM LOUVRES TO PLANT AREAS, MPC	<div>FS-121</div> LOW PROFILE METAL CLADDING, METALLIC COLORBOND, COLOUR TBC, WITH HIGH PERFORMANCE VISION GLASS AND SHADOWBOX SPANDREL GLASS IN POWDERCOAT ALUMINIUM FRAME MPC, ALUMINIUM LOUVRES TO PLANT AREAS, MPC	<div>FS-123</div> LOW PROFILE METAL CLADDING, METALLIC COLORBOND, COLOUR TBC, HIGH PERFORMANCE VISION GLAZING MPC / METAL SPANDREL MPC IN ALUMINIUM FRAME MPC, ALUMINIUM LOUVRES TO PLANT AREAS, MPC	<div>FS-141</div> PLANT LOUVRE
<div>FS-121A</div> GABLE END: HIGH PROFILE METAL CLADDING SOLID / PERFORATED TO OPEN STAIR, WITH HIGH PERFORMANCE VISION GLASS / SHADOWBOX SPANDREL GLASS IN POWDERCOAT ALUMINIUM FRAME MPC.	<div>FS-124</div> SILL TO CEILING WINDOW WALL, HIGH PERFORMANCE VISION GLASS / ALUMINIUM SPANDREL PANELS MPC, ALUMINIUM LOUVRES TO PLANT AREAS, MPC.	<div>FS-151</div> GROUND LEVEL CANOPIES TBC	<div>FS-161</div> GLASS BALUSTRADES TBC
		<div>FS-162</div> VERTICAL CHEVRON LOUVRE SCREEN	
		MPC = Metallic Powdercoat. Colour TBC.	

KEY PLAN			
REV	DESCRIPTION	DRN	DATE
1	ISSUED FOR SSD 2	BM	06/09/19

FACADE AREAS		
Facade Type	Area	Area %
FS-111	3025.68 m²	9.82%
FS-112	2954.68 m²	9.59%
FS-113	2782.56 m²	9.03%
FS-121	4271.62 m²	13.86%
FS-121A	2751.89 m²	8.93%
FS-122	1857.73 m²	6.03%
FS-123	8898.92 m²	22.38%
FS-124	2486.13 m²	8.07%
FS-131	2151.76 m²	6.98%
FS-141	233.42 m²	0.76%
FS-161	96.24 m²	0.31%
FS-162	1313.69 m²	4.26%
	30824.38 m²	

\* Excludes Canopies  
\* Includes Stage 2B Expansion

**COPYRIGHT**  
ALL RIGHTS RESERVED. THIS WORK IS COPYRIGHT AND CANNOT BE REPRODUCED OR COPIED IN ANY FORM OR BY ANY MEANS (GRAPHIC, ELECTRONIC OR MECHANICAL, INCLUDING PHOTOCOPYING) WITHOUT THE WRITTEN PERMISSION OF THE PRINCIPAL. UNDER THE TERMS OF THE CONTRACT, ANY LICENCE, EXPRESS OR IMPLIED, TO USE THE DOCUMENT FOR ANY PURPOSE WHATSOEVER IS RESTRICTED TO THE TERMS OF THE AGREEMENT OR IMPLIED AGREEMENT WITH THE PRINCIPAL UNDER THE TERMS OF THE CONTRACT.

**DIMENSIONS**  
**USE FIGURED DIMENSIONS. DO NOT SCALE. CONTRACTORS MUST VERIFY ALL DIMENSIONS ON THE SITE BEFORE COMMENCING ANY WORK OR MAKING ANY SHOP DRAWING WHICH MUST BE SUBMITTED AND REVIEWED BEFORE MANUFACTURE.**

**FIXTURES, FITTINGS & EQUIPMENT SPECIFICATIONS**  
SUBSTITUTE FF&E EQUIPMENT SPECIFICATIONS  
THE FIT-OUT DESIGN AND DOCUMENTATION HAS BEEN COMPLETED ON THE BASIS OF FF&E AND EQUIPMENT ADVISED TO THIS OFFICE AT THE TIME OF BRIEFING THE DESIGN. THE DESIGN PROVISIONS FOR FF&E AND EQUIPMENT INCORPORATES SPATIAL ALLOCATIONS, SERVICING, LOADING AND ACCESS CLEARANCES AND WHERE APPROPRIATE SERVICES REQUIREMENTS, HAVING DUE REGARD FOR SURROUNDING FIXTURES AND FITTINGS. IT SHOULD BE NOTED THAT SUBSTITUTE FF&E OR EQUIPMENT WITH ALTERNATE SPECIFICATIONS SHOULD NOT BE PROCURED PRIOR TO VALIDATING THESE SPECIFICATIONS AGAINST THE ITEM CONTROL, SCHEDULE AND DESIGN PROVISIONS IN THE MODEL. THIS OFFICE ACCEPTS NO RESPONSIBILITY FOR THE PROCUREMENT OF SUBSTITUTE FF&E AND EQUIPMENT WHICH HAS NOT BEEN REVIEWED AND VALIDATED AGAINST THE ORIGINAL DESIGN PROVISIONS.

**SERVICE POINTS DISCLAIMER**  
THE SERVICE POINTS IDENTIFIED ON THESE DRAWINGS HAVE BEEN OVERLAYED FROM THE BUILDING SERVICES ENGINEERING MODEL, AND ARE PROVIDED FOR INFORMATION AND SET-OUT PURPOSES ONLY. WE HAVE BEEN ADVISED BY THE SERVICES ENGINEERS THAT THE POINTS REPRESENTED ON THESE DRAWINGS ARE CORRECT AT THE TIME OF PUBLICATION. THIS OFFICE DOES NOT WARRANT THE ACCURACY OF THIS DATA. REFER TO THE BUILDING SERVICES ENGINEERING DOCUMENTATION FOR THE INSTALLATION OF THE SERVICES POINTS, AND THE INTERFACE BETWEEN THE SERVICES POINTS AND THE RESPECTIVE ENGINEERING SYSTEMS.

## ISSUED FOR INFORMATION

ARCHITECTS

STH

BATESSMART.

ABN: 21 134 476 905  
LEVEL 4, 89 YORK STREET  
SYDNEY NSW 2000, AUSTRALIA  
PH: (02) 8299 4600 FAX: (02) 9555 2455

M12147

43 BRISBANE STREET,  
SURRY HILLS NSW 2010  
ABN: 66 054 740 866 PH: (02) 8354 5100  
E: syd@batesmart.com.au

THIS ARCHITECTURAL DESIGN IS THE COPYRIGHT OF SILVER THOMAS HANLEY AND BATES SMART AND SHALL NOT BE REPRODUCED WITHOUT THEIR WRITTEN PERMISSION

PROJECT MANAGER

TSA

MANAGEMENT

CLIENT

NSW GOVERNMENT

Health Infrastructure

Health Northern NSW Local Health District

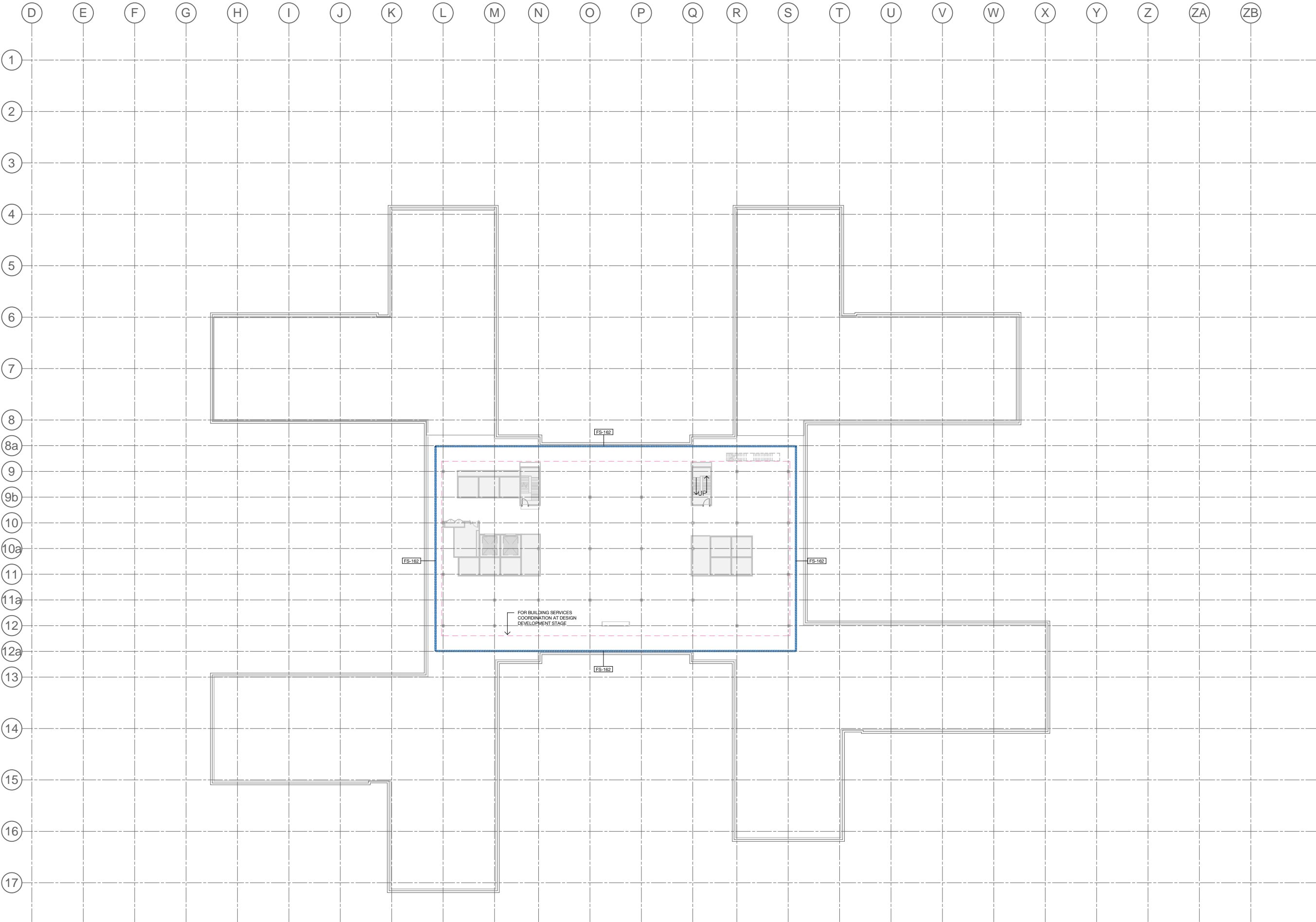
## TWEED VALLEY HOSPITAL

### FACADE TYPE PLANS MHB - LEVEL 05

SCALE	DATE	DRAWN BY	CHECKED
1 : 300 @ A1	06/09/19	MC	BS
1 : 600 @ A3			
PROJECT No	DRAWING No	REVISION	
10363	STB-AR-SKE-MHB-2105001	1	

BSM 350/Tweed Valley Hospital/TVL\_BS\_FACADE\_R2019.dwg





1 L 06 - Facade Type  
- Elevation 1 : 300

**FACADE TYPE SCOPING LEGEND**

**FS-111** PRECAST CONCRETE PANEL, PIGMENTED, OFF FORM FINISH, HIGH PERFORMANCE GLAZING ALUMINIUM MPC FRAME, SHADOWBOX SPANDREL GLASS OR ALUMINIUM FLAT PANEL MPC, ALUMINIUM LOUVRES TO PLANT AREAS, MPC

**FS-112** PRECAST CONCRETE PANEL, NON-PIGMENTED, OFF FORM FINISH, HIGH PERFORMANCE GLAZING ALUMINIUM MPC FRAME, SHADOWBOX SPANDREL GLASS OR ALUMINIUM FLAT PANEL MPC, ALUMINIUM LOUVRES TO PLANT AREAS, MPC

**FS-113** PRECAST CONCRETE PANEL, NON-PIGMENTED / BASEMENT WALL/SERVICE AREAS (NO GLAZING), ALUMINIUM LOUVRES TO PLANT AREAS, MPC

**FS-121** LOW PROFILE METAL CLADDING, METALLIC COLORBOND, COLOUR TBC, WITH HIGH PERFORMANCE VISION GLASS AND SHADOWBOX SPANDREL GLASS IN POWDERCOAT ALUMINIUM FRAME MPC, ALUMINIUM LOUVRES TO PLANT AREAS, MPC

**FS-121A** GABLE END, HIGH PROFILE METAL CLADDING SOLID / PERFORATED TO OPEN STAIR, WITH HIGH PERFORMANCE VISION GLASS / SHADOWBOX SPANDREL GLASS IN POWDERCOAT ALUMINIUM FRAME MPC.

**FS-122** LOW PROFILE METAL CLADDING, METALLIC COLORBOND, COLOUR TBC, WITH HIGH PERFORMANCE VISION GLASS AND ALTERNATING METAL SPANDREL MPC/ SHADOWBOX SPANDREL GLASS IN POWDERCOAT ALUMINIUM FRAME MPC, ALUMINIUM LOUVRES TO PLANT AREAS, MPC

**FS-123** LOW PROFILE METAL CLADDING, METALLIC COLORBOND, COLOUR TBC, HIGH PERFORMANCE VISION GLAZING MPC / METAL SPANDREL MPC, IN ALUMINIUM FRAME MPC, ALUMINIUM LOUVRES TO PLANT AREAS, MPC

**FS-124** SILL TO CEILING WINDOW WALL, HIGH PERFORMANCE VISION GLASS / ALUMINIUM SPANDREL PANELS MPC, ALUMINIUM LOUVRES TO PLANT AREAS, MPC.

**FS-131** CURTAIN WALL FAÇADE: WITH HIGH PERFORMANCE VISION GLASS AND SHADOWBOX SPANDREL GLASS IN POWDERCOAT ALUMINIUM FRAME MPC, ALUMINIUM LOUVRES TO PLANT AREAS, MPC, INCLUDES AIRLOCKS AND METAL CLAD PORTAL

**FS-141** PLANT LOUVRE

**FS-151** GROUND LEVEL CANOPIES TBC

**FS-161** GLASS BALUSTRADES TBC

**FS-162** VERTICAL CHEVRON LOUVRE SCREEN

MPC = Metallic Powdercoat, Colour TBC.



KEY PLAN

REV	DESCRIPTION	DRN	DATE
1	ISSUED FOR SSD 2	BM	06/09/19

FACADE AREAS		
Facade Type	Area	Area %
FS-111	3025.68 m²	9.82%
FS-112	2954.68 m²	9.59%
FS-113	2782.56 m²	9.03%
FS-121	4271.62 m²	13.86%
FS-121A	2751.89 m²	8.93%
FS-122	1857.73 m²	6.03%
FS-123	8888.92 m²	22.38%
FS-124	2486.13 m²	8.07%
FS-131	2151.76 m²	6.98%
FS-141	233.42 m²	0.76%
FS-161	96.24 m²	0.31%
FS-162	1313.69 m²	4.26%
	30824.38 m²	

\* Excludes Canopies  
\* Includes Stage 2B Expansion

**COPYRIGHT**  
ALL RIGHTS RESERVED. THIS WORK IS COPYRIGHT AND CANNOT BE REPRODUCED OR COPIED IN ANY FORM OR BY ANY MEANS (GRAPHIC, ELECTRONIC OR MECHANICAL, INCLUDING PHOTOCOPYING) WITHOUT THE WRITTEN PERMISSION OF THE PRINCIPAL. UNDER THE TERMS OF THE CONTRACT, ANY LICENCE, EXPRESS OR IMPLIED, TO USE THE DOCUMENT FOR ANY PURPOSE WHATSOEVER IS RESTRICTED TO THE TERMS OF THE AGREEMENT OR IMPLIED AGREEMENT WITH THE PRINCIPAL UNDER THE TERMS OF THE CONTRACT.

**DIMENSIONS**  
**USE FIGURED DIMENSIONS. DO NOT SCALE. CONTRACTORS MUST VERIFY ALL DIMENSIONS ON THE SITE BEFORE COMMENCING ANY WORK OR MAKING ANY SHOP DRAWING WHICH MUST BE SUBMITTED AND REVIEWED BEFORE MANUFACTURE.**

**FIXTURES, FITTINGS & EQUIPMENT SPECIFICATIONS**  
SUBSTITUTE FF&E EQUIPMENT SPECIFICATIONS  
THE FIT-OUT DESIGN AND DOCUMENTATION HAS BEEN COMPLETED ON THE BASIS OF FF&E AND EQUIPMENT ADVISED TO THIS OFFICE AT THE TIME OF BRIEFING THE DESIGN. THE DESIGN PROVISIONS FOR FF&E AND EQUIPMENT INCORPORATES SPATIAL ALLOCATIONS, SERVING, LOADING AND ACCESS CLEARANCES AND WHERE APPROPRIATE SERVICES REQUIREMENTS, HAVING DUE REGARD FOR SURROUNDING FIXTURES AND FITTINGS. IT SHOULD BE NOTED THAT SUBSTITUTE FF&E OR EQUIPMENT WITH ALTERNATE SPECIFICATIONS SHOULD NOT BE PROCURED PRIOR TO VALIDATING THESE SPECIFICATIONS AGAINST THE ITEM CONTROL SCHEDULE AND DESIGN PROVISIONS IN THE MODEL. THIS OFFICE ACCEPTS NO RESPONSIBILITY FOR THE PROCUREMENT OF SUBSTITUTE FF&E AND EQUIPMENT WHICH HAS NOT BEEN REVIEWED AND VALIDATED AGAINST THE ORIGINAL DESIGN PROVISIONS.

**SERVICE POINTS DISCLAIMER**  
THE SERVICE POINTS IDENTIFIED ON THESE DRAWINGS HAVE BEEN OVERLAYED FROM THE BUILDING SERVICES ENGINEERING MODEL, AND ARE PROVIDED FOR INFORMATION AND SET-OUT PURPOSES ONLY. WE HAVE BEEN ADVISED BY THE SERVICES ENGINEERS THAT THE POINTS REPRESENTED ON THESE DRAWINGS ARE CORRECT AT THE TIME OF PUBLICATION. THIS OFFICE DOES NOT WARRANT THE ACCURACY OF THIS DATA, REFER TO THE BUILDING SERVICES ENGINEERING DOCUMENTATION FOR THE INSTALLATION OF THE SERVICES POINTS, AND THE INTERFACE BETWEEN THE SERVICES POINTS AND THE RESPECTIVE ENGINEERING SYSTEMS.

**ISSUED FOR INFORMATION**

ARCHITECTS

**BATESSMART.**

**M12147**  
43 BRISBANE STREET,  
SURRY HILLS, NSW 2010  
ABN: 66 054 740 866 PH: (02) 8354 5100  
E: syd@batesmart.com.au

43 BRISBANE STREET,  
SURRY HILLS, NSW 2010  
ABN: 21 134 476 905  
LEVEL 4, 89 YORK STREET  
SYDNEY NSW 2000, AUSTRALIA  
PH: (02) 8299 4600 FAX: (03) 9885 2455

THIS ARCHITECTURAL DESIGN IS THE COPYRIGHT OF SILVER THOMAS HANLEY AND BATES SMART AND SHALL NOT BE REPRODUCED WITHOUT THEIR WRITTEN PERMISSION

PROJECT MANAGER

CLIENT

**Health Infrastructure**

**Health Northern NSW Local Health District**

PROJECT

**TWEED VALLEY HOSPITAL**

DRAWING TITLE

**FACADE TYPE PLANS  
MHB - LEVEL 06**

SCALE 1 : 300 @ A1 1 : 600 @ A3

DATE 06/09/19

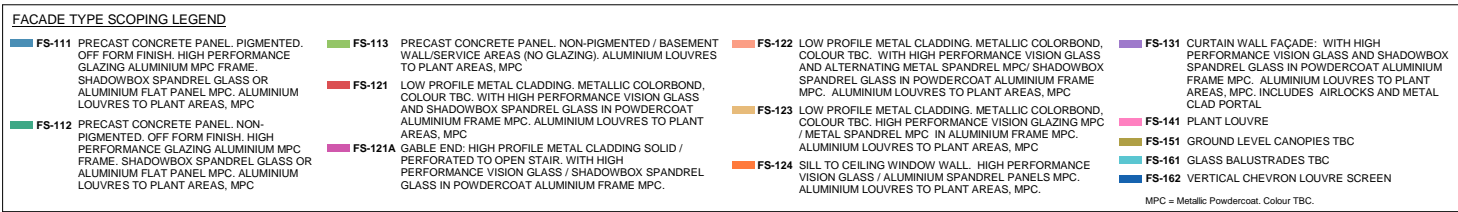
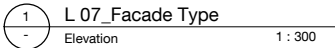
DRAWN BY MC

CHECKED BS

PROJECT No 10363

DRAWING No STB-AR-SKE-MHB-2106001

REVISION 1



Facade Type	Area	Area %
FS-111	3025.68 m <sup>2</sup>	9.82%
FS-112	2954.68 m <sup>2</sup>	9.59%
FS-113	2782.56 m <sup>2</sup>	9.03%
FS-121	4271.62 m <sup>2</sup>	13.86%
FS-121A	2751.89 m <sup>2</sup>	8.93%
FS-122	1857.78 m <sup>2</sup>	6.03%
FS-123	6898.92 m <sup>2</sup>	22.38%
FS-124	2486.13 m <sup>2</sup>	8.07%
FS-131	2151.76 m <sup>2</sup>	6.98%
FS-141	2332.42 m <sup>2</sup>	0.76%
FS-161	96.24 m <sup>2</sup>	0.31%
FS-162	1313.69 m <sup>2</sup>	4.26%
	30824.38 m <sup>2</sup>	

**COPYRIGHT**

ALL RIGHTS RESERVED. THIS WORK IS COPYRIGHTED AND CANNOT BE REPRODUCED OR COPIED IN ANY FORM OR BY ANY MEANS (GRAPHIC, ELECTRONIC OR MECHANICAL, INCLUDING PHOTOCOPYING) WITHOUT THE WRITTEN PERMISSION OF THE PRINCIPAL UNDER THE TERMS OF THE CONTRACT. ANY LICENCE, EXPRESS OR IMPLIED, TO USE THE DOCUMENT FOR ANY PURPOSE WHATSOEVER IS RESTRICTED TO THE TERMS OF THE AGREEMENT OR IMPLIED AGREEMENT WITH THE PRINCIPAL UNDER THE TERMS OF THE CONTRACT.

## DIMENSIONS

USE FIGURED DIMENSIONS, DO NOT SCALE. CONTRACTORS MUST VERIFY ALL DIMENSIONS ON THE SITE BEFORE COMMENCING ANY WORK OR MAKING ANY SHOP DRAWING WHICH MUST BE SUBMITTED AND REVIEWED BEFORE MANUFACTURE.

## FIXTURES, FITTINGS & EQUIPMENT SPECIFICATIONS

SUBSTITUTE FF&E EQUIPMENT SPECIFICATIONS

THE FIT-OUT DESIGN AND DOCUMENTATION HAS BEEN COMPLETED ON THE BASIS OF FF&E AND EQUIPMENT ADVISED TO THIS OFFICE AT THE TIME OF BRIEFING THE DESIGN. THE DESIGN PROVISIONS FOR FF&E AND EQUIPMENT INCORPORATED INTO THE DESIGN ARE BASED ON THE ASSUMPTION THAT THE OFFICE WILL BE WHERE APPROPRIATE SERVICES REQUIREMENTS, HAVING DUE REGARD FOR SURROUNDING FIXTURES AND FITTINGS. IT SHOULD BE NOTED THAT SUBSTITUTE FF&E OR EQUIPMENT WITH ALTERNATE SPECIFICATIONS SHOULD NOT BE PROCURED PRIOR TO REVIEWING THOSE SPECIFICATIONS AGAINST THE ITEM CONTROL, SCHEDULE AND DESIGN PROVISIONS IN THE MODEL. THIS OFFICE ACCEPTS NO RESPONSIBILITY FOR THE PROCUREMENT OF SUBSTITUTE FF&E AND EQUIPMENT WHICH HAS NOT BEEN REVIEWED AND VALIDATED AGAINST THE ORIGINAL DESIGN PROVISIONS.

### SERVICE POINTS DISCLAIMER

THE SERVICE POINTS IDENTIFIED ON THESE DRAWINGS HAVE BEEN OVERLAYED FROM THE BUILDING SERVICES ENGINEERING MODEL, AND ARE PROVIDED FOR INFORMATION AND SET-OUT PURPOSES ONLY. WE HAVE BEEN ADVISED BY THE SERVICES ENGINEERS THAT THE POINTS REPRESENTED ON THESE DRAWINGS ARE CORRECT AT THE TIME OF PUBLICATION. THIS OFFICE DOES NOT WARRANT THE ACCURACY OF THIS DATA. REFER TO THE BUILDING SERVICES ENGINEERING DOCUMENTATION FOR THE INSTALLATION OF THE SERVICES POINTS, AND THE INTERFACE BETWEEN THE SERVICES POINTS AND THE RESPECTIVE ENGINEERING SYSTEMS.

**ISSUED FOR INFORMATION**

ARCHITECTS



THIS ARCHITECTURAL DESIGN IS THE COPYRIGHT OF SILVER THOMAS HANLEY AND  
BATES SMART AND SHALL NOT BE REPRODUCED WITHOUT THEIR WRITTEN PERMISSION

PROJECT MANAGER



**TWEED VALLEY HOSPITAL**

DRAWING TITLE

FACADE TYPE PLANS  
MHB - LEVEL 07

SCALE DATE DRAWN BY CHECKED  
1:300@A1 06/09/19 MC BS

PROJECT No	DRAWING No	REVISION
10363	STB-AR-SKE-MHB-2107001	1