

KEY PLAN

REV	DESCRIPTION	DRN	DATE
1	ISSUED FOR SSD2	BM	06/09/19

COPYRIGHT

ALL RIGHTS RESERVED. THIS WORK IS COPYRIGHT AND CANNOT BE REPRODUCED OR COPIED IN ANY FORM OR BY ANY MEANS (GRAPHIC, ELECTRONIC OR MECHANICAL INCLUDING PHOTOCOPIING) WITHOUT THE WRITTEN PERMISSION OF THE PRINCIPAL UNDER THE TERMS OF THE CONTRACT. ANY LICENCE, EXPRESS OR IMPLIED, TO USE THE DOCUMENT FOR ANY PURPOSE WHATSOEVER IS RESTRICTED TO THE TERMS OF THE AGREEMENT OR IMPLIED AGREEMENT WITH THE PRINCIPAL UNDER THE TERMS OF THE CONTRACT.

DIMENSIONS

USE FIGURED DIMENSIONS. DO NOT SCALE. CONTRACTORS MUST VERIFY ALL DIMENSIONS ON THE SITE BEFORE COMMENCING ANY WORK OR MAKING ANY SHOP DRAWING WHICH MUST BE SUBMITTED AND REVIEWED BEFORE MANUFACTURE.

FIXTURES, FITTINGS & EQUIPMENT SPECIFICATIONS

SUBSTITUTE FF&E EQUIPMENT SPECIFICATIONS
THE FIT-OUT DESIGN AND DOCUMENTATION HAS BEEN COMPLETED ON THE BASIS OF FF&E AND EQUIPMENT ADVISED TO THIS OFFICE AT THE TIME OF BRIEFING THE DESIGN. THE DESIGN PROVISIONS FOR FF&E AND EQUIPMENT INCORPORATES SPATIAL ALLOCATIONS, SERVICING, LOADING AND ACCESS CLEARANCES AND WHERE APPROPRIATE SERVICES REQUIREMENTS, HAVING DUE REGARD FOR SURROUNDING FIXTURES AND FITTINGS. IT SHOULD BE NOTED THAT SUBSTITUTE FF&E OR EQUIPMENT WITH ALTERNATE SPECIFICATIONS SHOULD NOT BE PROCURED PRIOR TO VALIDATING THOSE SPECIFICATIONS AGAINST THE ITEM CONTROL SCHEDULE AND DESIGN PROVISIONS IN THE MODEL. THIS OFFICE ACCEPTS NO RESPONSIBILITY FOR THE PROCUREMENT OF SUBSTITUTE FF&E AND EQUIPMENT WHICH HAS NOT BEEN REVIEWED AND VALIDATED AGAINST THE ORIGINAL DESIGN PROVISIONS.

SERVICE POINTS DISCLAIMER

THE SERVICE POINTS IDENTIFIED ON THESE DRAWINGS HAVE BEEN OVERLAYED FROM THE BUILDING SERVICES ENGINEERING MODEL AND ARE PROVIDED FOR INFORMATION AND SET-OUT PURPOSES ONLY. WE HAVE BEEN ADVISED BY THE SERVICES ENGINEERS THAT THE POINTS REPRESENTED ON THESE DRAWINGS ARE CORRECT AT THE TIME OF PUBLICATION. THIS OFFICE DOES NOT WARRANT THE ACCURACY OF THIS DATA. REFER TO THE BUILDING SERVICES ENGINEERING DOCUMENTATION FOR THE INSTALLATION OF THE SERVICES POINTS, AND THE INTERFACE BETWEEN THE SERVICES POINTS AND THE RESPECTIVE ENGINEERING SYSTEMS.

ISSUED FOR INFORMATION

ARCHITECTS

STH

BATESSMART.

ABN: 21 134 470 905
LEVEL 4, 89 YORK STREET
SYDNEY NSW 2000, AUSTRALIA
PH: (02) 8299 4600 FAX: (03) 9885 2455

M12147

43 BRISBANE STREET,
SURREY HILLS, NSW 2010
ABN: 68 094 740 986 PH: (02) 8354 5100
E: syd@batesmart.com.au

THIS ARCHITECTURAL DESIGN IS THE COPYRIGHT OF SILVER THOMAS HANLEY AND BATES SMART AND SHALL NOT BE REPRODUCED WITHOUT THEIR WRITTEN PERMISSION

PROJECT MANAGER

CLIENT

Health Infrastructure

Health Northern NSW Local Health District

PROJECT

TWEED VALLEY HOSPITAL

DRAWING TITLE

BOUNDARY SETBACKS

SCALE

1 : 1250 @ A1
1 : 2500 @ A3

DATE

06/09/19

DRAWN BY

BM

CHECKED

BS

PROJECT No

10363

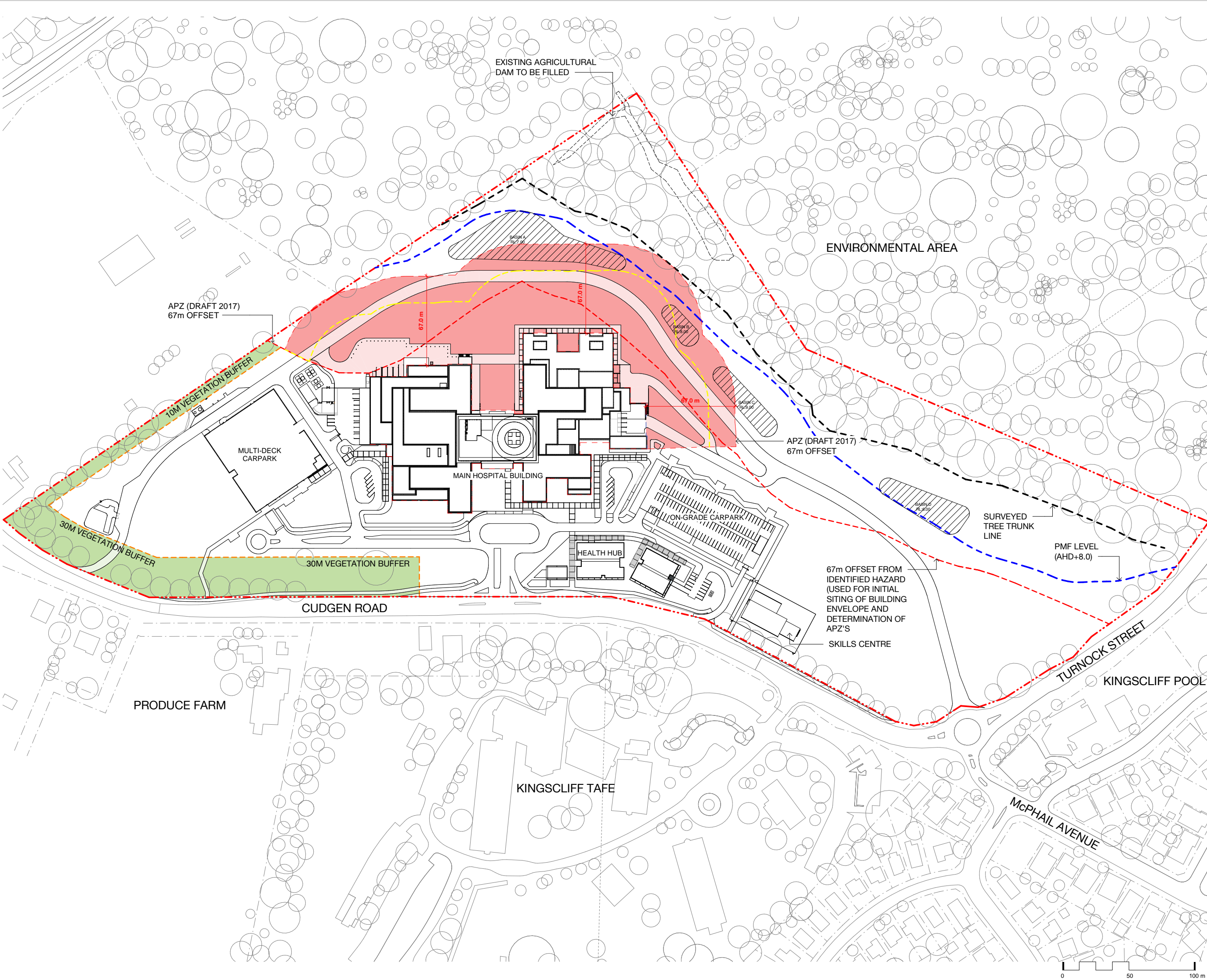
DRAWING No

STB-AR-SKE-PRW-1000020

REVISION

1

BM 300 Tweed Valley Hospital V4 BS SITE R2018.dwg



KEY PLAN

REV	DESCRIPTION	DRN	DATE
1	ISSUED FOR SS02	BM	06/09/19

LEGEND

SITE BOUNDARY

SEDIMENT BASIN WORKS
ALREADY COMPLETE

VEGETATION BUFFER

67m APZ OFFSET FROM
EXTERNAL BUILDING
FOOTPRINT.

IPA/ OPA BOUNDARY.

COPYRIGHT

ALL RIGHTS RESERVED. THIS WORK IS COPYRIGHT AND CANNOT BE REPRODUCED OR COPIED IN ANY FORM OR BY ANY MEANS (GRAPHIC, ELECTRONIC OR MECHANICAL INCLUDING PHOTOCOPYING) WITHOUT THE WRITTEN PERMISSION OF THE PRINCIPAL UNDER THE TERMS OF THE CONTRACT. ANY LICENCE, EXPRESS OR IMPLIED, TO USE THE DOCUMENT FOR ANY PURPOSE WHATSOEVER IS RESTRICTED TO THE TERMS OF THE AGREEMENT OR IMPLIED AGREEMENT WITH THE PRINCIPAL UNDER THE TERMS OF THE CONTRACT.

DIMENSIONS

USE FIGURED DIMENSIONS. DO NOT SCALE. CONTRACTORS MUST VERIFY ALL DIMENSIONS ON THE SITE BEFORE COMMENCING ANY WORK OR MAKING ANY SHOP DRAWING WHICH MUST BE SUBMITTED AND REVIEWED BEFORE MANUFACTURE.

FIXTURES, FITTINGS & EQUIPMENT SPECIFICATIONS

SUBSTITUTE FF&E EQUIPMENT SPECIFICATIONS
THE FIT-OUT DESIGN AND DOCUMENTATION HAS BEEN COMPLETED ON THE BASIS OF FF&E AND EQUIPMENT ADVISED TO THIS OFFICE AT THE TIME OF BRIEFING THE DESIGN. THE DESIGN PROVISIONS FOR FF&E AND EQUIPMENT INCORPORATES SPATIAL ALLOCATIONS, SERVICING, LOADING AND ACCESS CLEARANCES AND WHERE APPROPRIATE SERVICES REQUIREMENTS, HAVING DUE REGARD FOR SURROUNDING FIXTURES AND FITTINGS. IT SHOULD BE NOTED THAT SUBSTITUTE FF&E OR EQUIPMENT WITH ALTERNATE SPECIFICATIONS SHOULD NOT BE PROCURED PRIOR TO VALIDATING THOSE SPECIFICATIONS AGAINST THE ITEM CONTROL SCHEDULE AND DESIGN PROVISIONS IN THE MODEL. THIS OFFICE ACCEPTS NO RESPONSIBILITY FOR THE PROCUREMENT OF SUBSTITUTE FF&E AND EQUIPMENT WHICH HAS NOT BEEN REVIEWED AND VALIDATED AGAINST THE ORIGINAL DESIGN PROVISIONS.

SERVICE POINTS DISCLAIMER

THE SERVICE POINTS IDENTIFIED ON THESE DRAWINGS HAVE BEEN OVERLAYED FROM THE BUILDING SERVICES ENGINEERING MODEL, AND ARE PROVIDED FOR INFORMATION AND SET-OUT PURPOSES ONLY. WE HAVE BEEN ADVISED BY THE SERVICES ENGINEERS THAT THE POINTS REPRESENTED ON THESE DRAWINGS ARE CORRECT AT THE TIME OF PUBLICATION. THIS OFFICE DOES NOT WARRANT THE ACCURACY OF THIS DATA. REFER TO THE BUILDING SERVICES ENGINEERING DOCUMENTATION FOR THE INSTALLATION OF THE SERVICES POINTS, AND THE INTERFACE BETWEEN THE SERVICES POINTS AND THE RESPECTIVE ENGINEERING SYSTEMS.

ISSUED FOR INFORMATION

ARCHITECTS

BATESSMART.

ABN: 21 134 470 905
LEVEL 4, 89 YORK STREET
SYDNEY NSW 2000, AUSTRALIA
PH: (02) 8299 4600 FAX: (03) 9885 2455

M12147
43 BRISBANE STREET,
SURREY HILLS, NSW 2150
ABN: 68 094 740 986 PH: (02) 8354 5100
E: syd@batesmart.com.au

THIS ARCHITECTURAL DESIGN IS THE COPYRIGHT OF SILVER THOMAS HANLEY AND BATES SMART AND SHALL NOT BE REPRODUCED WITHOUT THEIR WRITTEN PERMISSION

PROJECT MANAGER

CLIENT

Health Infrastructure

Health Northern NSW Local Health District

PROJECT

TWEED VALLEY HOSPITAL

DRAWING TITLE

SITE SETBACK CONDITIONS

SCALE

DATE

DRAWN BY

CHECKED

1 : 1250 @ A1

06/09/19

BM

BS

1 : 2500 @ A3

PROJECT No

DRAWING No

REVISION

10363

STB-AR-SKE-PRW-1000021

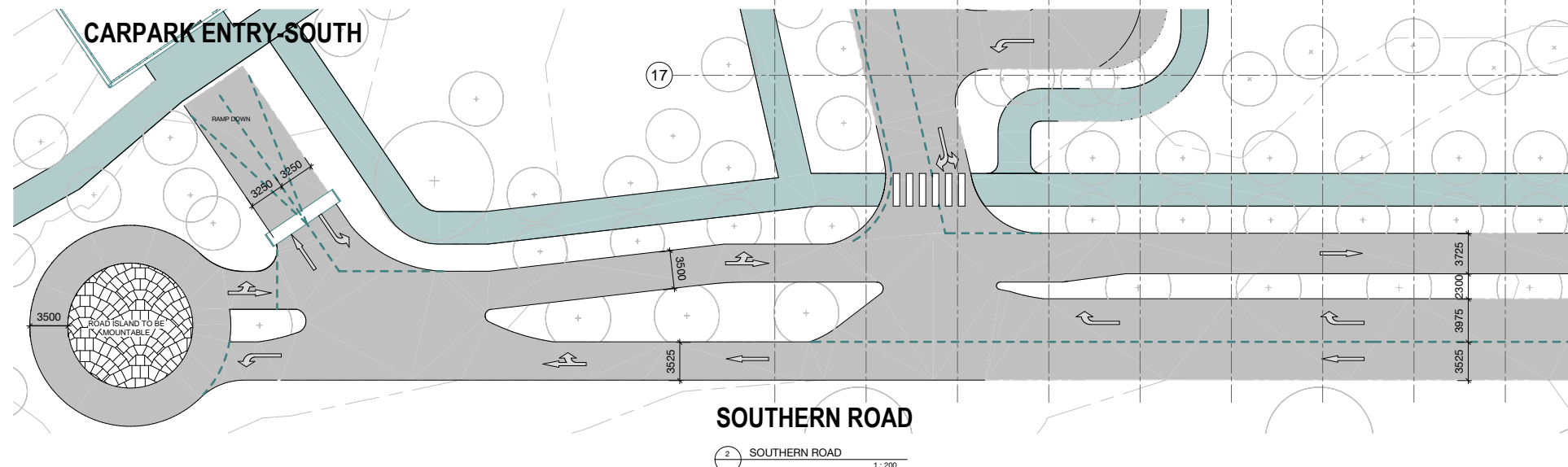
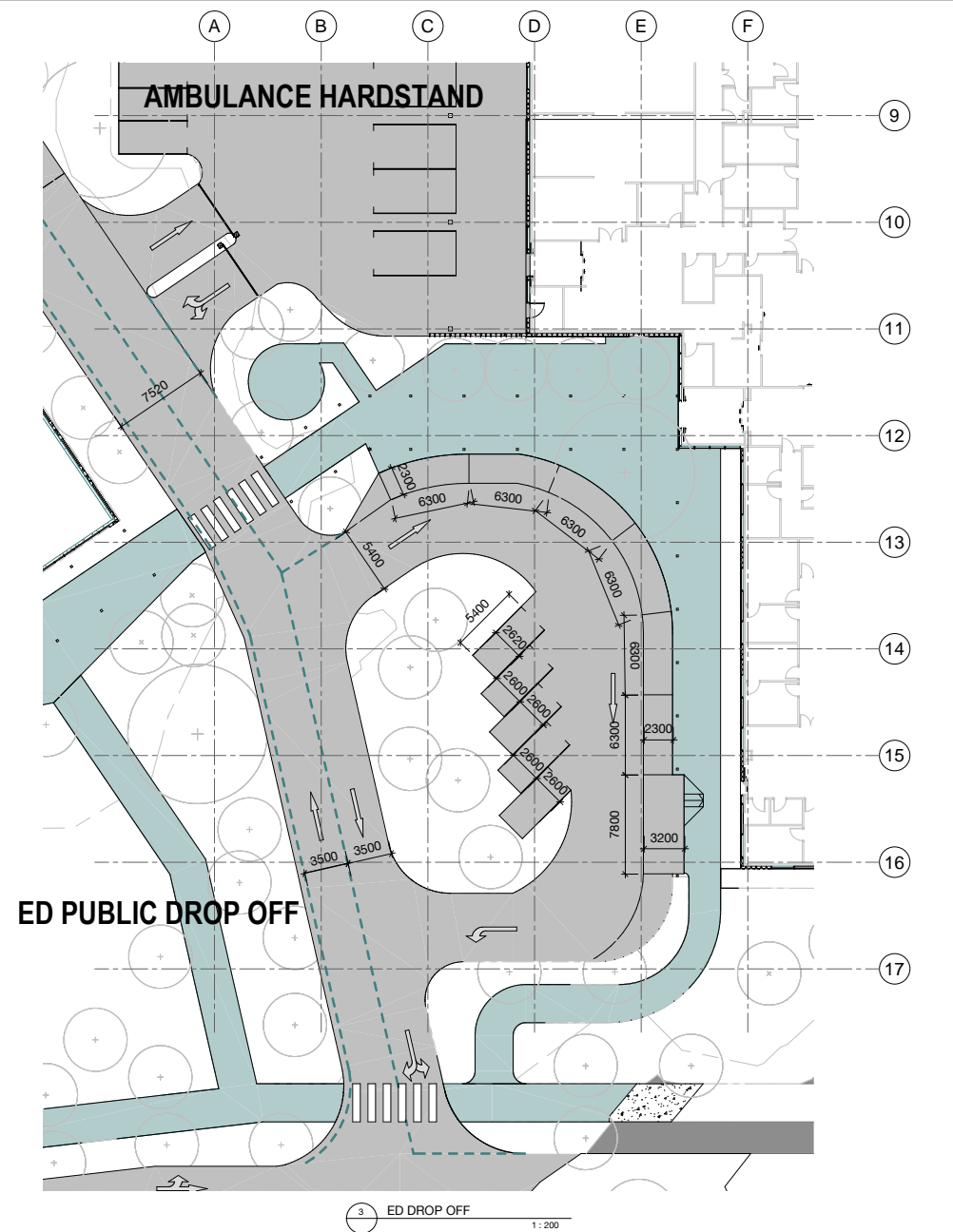
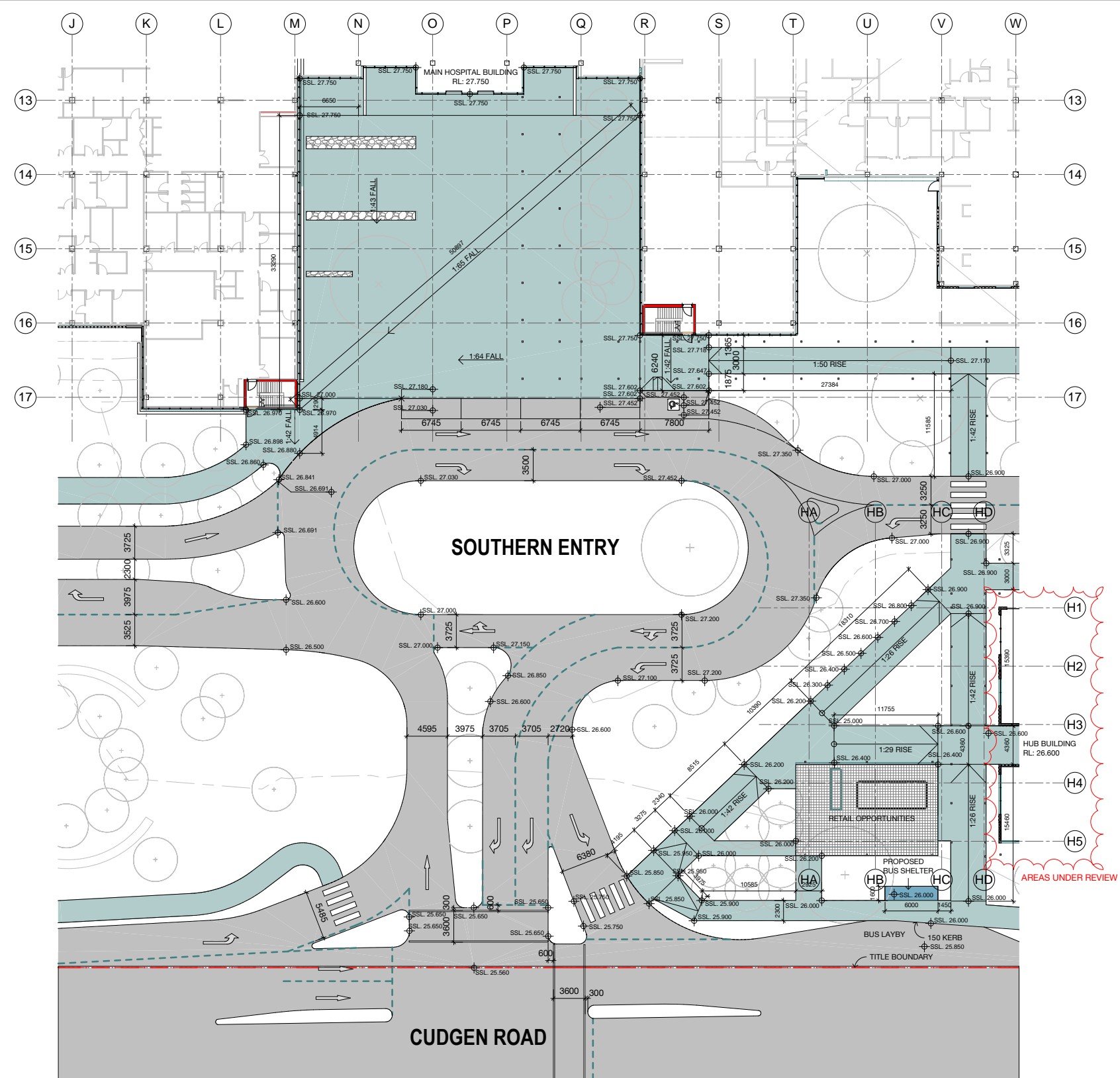
1

0

50

100 m

BM 300 (Tweed Valley Hospital) V4, BS, SITE, R2018.dwg



KEY PLAN

SITE KEY
N.T.S.

REV **DESCRIPTION** **BY** **DATE**

1	ISSUED FOR INFORMATION	BM	10/01/19
2	ISSUED FOR INFORMATION	BM	10/01/19
3	ISSUED FOR INFORMATION	BM	10/01/19
4	ISSUED FOR INFORMATION	BM	10/01/19
5	ISSUED FOR INFORMATION	BM	10/01/19
6	ISSUED FOR INFORMATION	BM	10/01/19
7	ISSUED FOR INFORMATION	BM	10/01/19
8	ISSUED FOR INFORMATION	BM	10/01/19
9	ISSUED FOR INFORMATION	BM	10/01/19
10	ISSUED FOR INFORMATION	BM	10/01/19
11	ISSUED FOR INFORMATION	BM	10/01/19
12	ISSUED FOR INFORMATION	BM	10/01/19
13	ISSUED FOR INFORMATION	BM	10/01/19
14	ISSUED FOR INFORMATION	BM	10/01/19
15	ISSUED FOR INFORMATION	BM	10/01/19
16	ISSUED FOR INFORMATION	BM	10/01/19
17	ISSUED FOR INFORMATION	BM	10/01/19

NOTE:
BUS STOPS AND SHELTERS IN ACCORDANCE WITH TWEED SHIRE COUNCIL REQUIREMENTS AND STA BUS INFRASTRUCTURE GUIDE.

COPYRIGHT
ALL RIGHTS RESERVED. THIS WORK IS COPYRIGHT AND CANNOT BE REPRODUCED OR COPIED IN ANY FORM OR BY ANY MEANS (GRAPHIC, ELECTRONIC OR MECHANICAL) INCLUDING PHOTOCOPYING WITHOUT THE WRITTEN PERMISSION OF THE PRINCIPAL UNDER THE TERMS OF THE CONTRACT. ANY LICENCE, EXPRESS OR IMPLIED, TO USE THE DOCUMENT FOR ANY PURPOSE WHATSOEVER IS RESTRICTED TO THE TERMS OF THE CONTRACT.

DIMENSIONS
USE FIGURED DIMENSIONS. DO NOT SCALE. CONTRACTORS MUST VERIFY ALL DIMENSIONS ON THE SITE BEFORE COMMENCING ANY WORK OR MAKING ANY SHOP DRAWING WHICH MUST BE SUBMITTED AND REVIEWED BEFORE MANUFACTURE.

FIXTURES, FITTINGS & EQUIPMENT SPECIFICATIONS
SUBSTITUTE FIRE EQUIPMENT SPECIFICATIONS
THE FIRE EQUIPMENT AND DOCUMENTATION HAS BEEN COMPLETED ON THE BASIS OF FIRE AND EQUIPMENT ADVISED TO THIS OFFICE AT THE TIME OF BRIEFING THE DESIGN. THE DESIGN PROVIDING FOR FIRE AND EQUIPMENT INCORPORATES SPATIAL ALLOCATIONS, SERVICES, LOADING AND ACCESS CLEARANCES AND WHERE APPROPRIATE SPECIFICATIONS SHOULD NOT BE PROCEEDED PRIOR TO VALIDATING THOSE SPECIFICATIONS AGAINST THE ITEM CONTROL SCHEDULE AND DESIGN PROVISIONS IN THE MODEL. THIS OFFICE ACCEPTS NO RESPONSIBILITY FOR THE PROCUREMENT OF SUBSTITUTE FIRE AND EQUIPMENT WHICH HAS NOT BEEN REVIEWED AND VALIDATED AGAINST THE ORIGINAL DESIGN PROVISIONS.

SERVICE POINTS DISCLAIMER
THE SERVICE POINTS IDENTIFIED ON THESE DRAWINGS HAVE BEEN OVERLAPPED FROM THE BUILDING SERVICES ENGINEERING DESIGN, AND ARE PROVIDED FOR INFORMATION AND SET-OUT PURPOSES ONLY. WE HAVE BEEN ADVISED BY THE SERVICES ENGINEER THAT THE POINTS IDENTIFIED ON THESE DRAWINGS ARE CORRECT AT THE TIME OF PUBLICATION. THIS OFFICE DOES NOT WARRANT THE ACCURACY OF THIS DATA. REFER TO THE BUILDING SERVICES ENGINEERING DOCUMENTATION FOR THE INSTALLATION OF THE SERVICE POINTS, AND THE INTERFACE BETWEEN THE SERVICE POINTS AND THE RESPECTIVE ENGINEERING SYSTEMS.

ISSUED FOR INFORMATION

ARCHITECTS

STH BATESSMART.

M12147
43 BRISBANE STREET,
SUNSHINE HILLS, NSW 2120
ABN: 61 601 700 000
E: info@batesmart.com.au

PROJECT MANAGER

TSA
MANAGEMENT

CLIENT

Health Northern NSW
Infrastructure Local Health District

PROJECT

TWEED VALLEY HOSPITAL

DRAWING TITLE

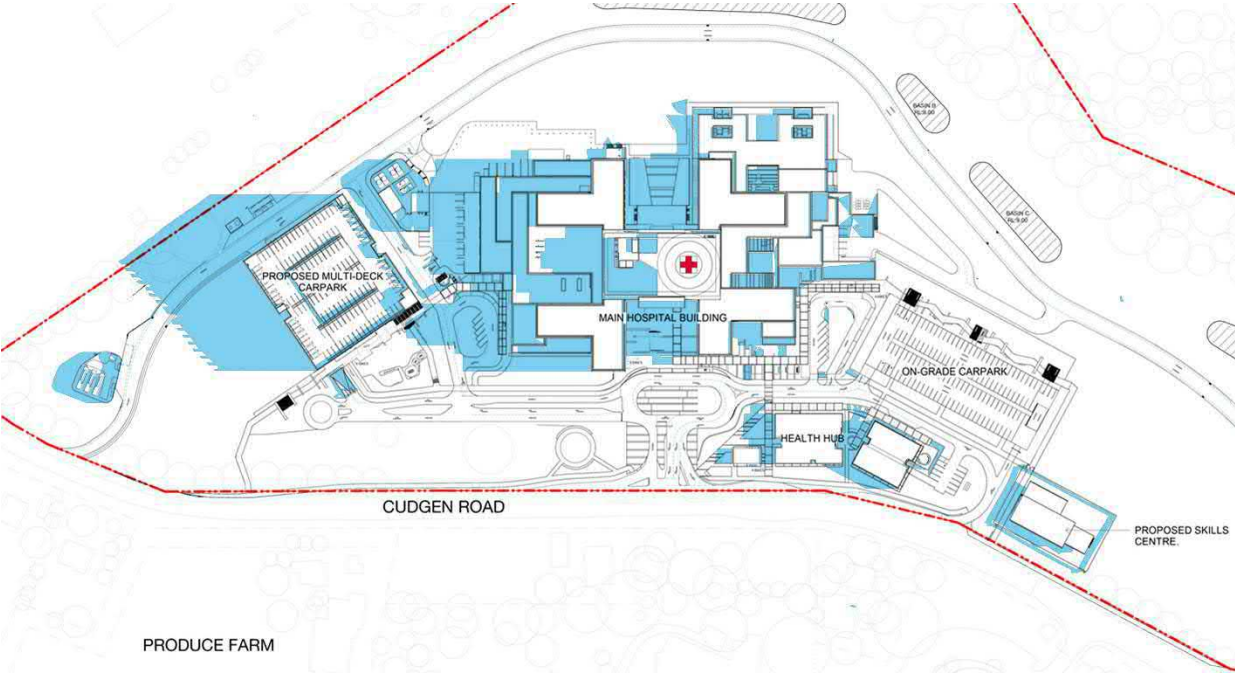
SITE HARDSTAND ZONAL

SCALE **DATE** **DRAWN BY** **CHECKED**

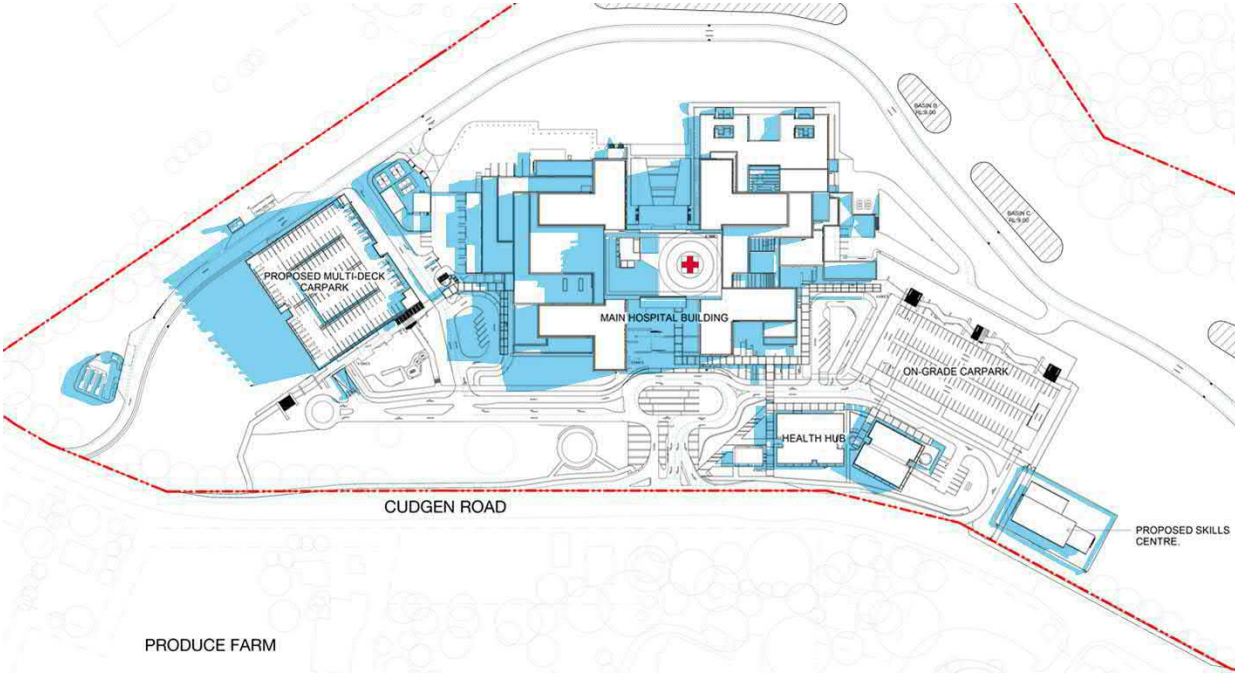
1:200@A0 07/18/19 BM BS

PROJECT No **DRAWING No** **REVISION**

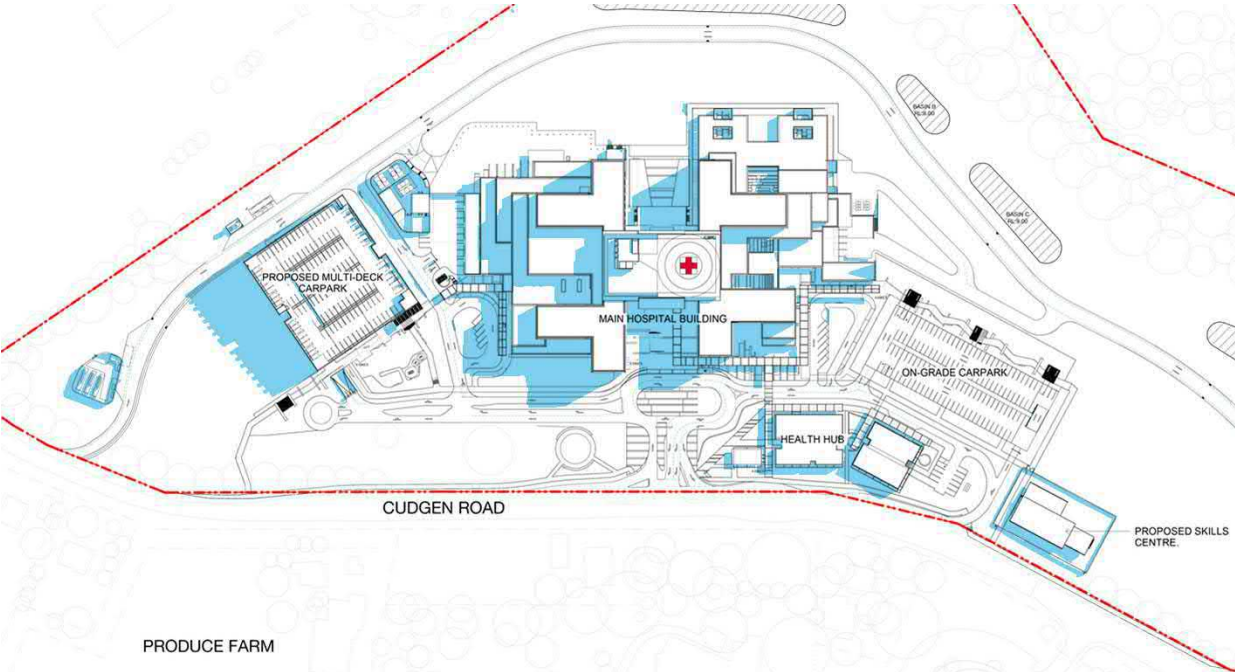
10363 STB-AR-DWG-PRW-1000012 **4**



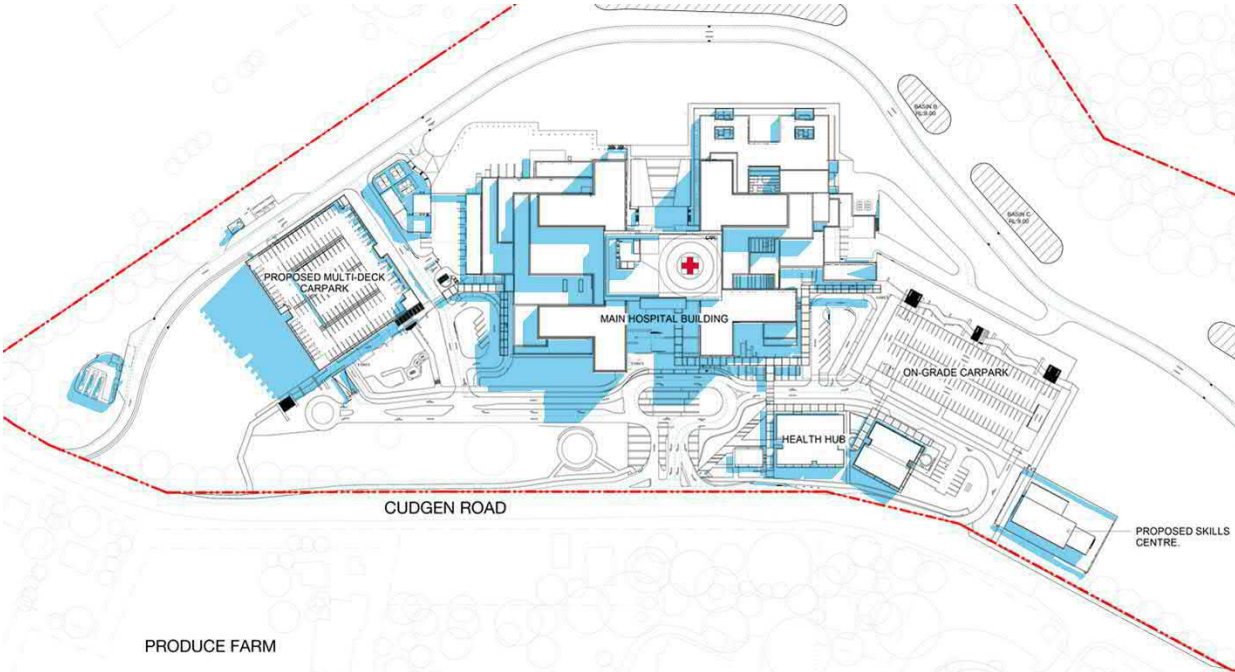
21 June - 9am



21 June - 10am



21 June - 11am



21 June - 12pm

KEY PLAN

REV	DESCRIPTION	DRN	DATE
1	ISSUED FOR SSD2	BM	06/09/19

Method of Production

Geometry produced in Revit.
Survey information based on Survey 22633 B, dated 15.06.2018, produced by B & P Surveys.
Shadows generated by Rhinoceros 3D & Vray.
Sunlight system based on MGA 56 Zone.

COPYRIGHT

ALL RIGHTS RESERVED. THIS WORK IS COPYRIGHT AND CANNOT BE REPRODUCED OR COPIED IN ANY FORM OR BY ANY MEANS (GRAPHIC, ELECTRONIC OR MECHANICAL INCLUDING PHOTOCOPYING) WITHOUT THE WRITTEN PERMISSION OF THE PRINCIPAL UNDER THE TERMS OF THE CONTRACT. ANY LICENCE, EXPRESS OR IMPLIED, TO USE THE DOCUMENT FOR ANY PURPOSE WHATSOEVER IS RESTRICTED TO THE TERMS OF THE AGREEMENT OR IMPLIED AGREEMENT WITH THE PRINCIPAL UNDER THE TERMS OF THE CONTRACT.

DIMENSIONS

USE FIGURED DIMENSIONS. DO NOT SCALE. CONTRACTORS MUST VERIFY ALL DIMENSIONS ON THE SITE BEFORE COMMENCING ANY WORK OR MAKING ANY SHOP DRAWING WHICH MUST BE SUBMITTED AND REVIEWED BEFORE MANUFACTURE.

FIXTURES, FITTINGS & EQUIPMENT SPECIFICATIONS

SUBSTITUTE FF&E EQUIPMENT SPECIFICATIONS
THE FIT-OUT DESIGN AND DOCUMENTATION HAS BEEN COMPLETED ON THE BASIS OF FF&E AND EQUIPMENT ADVISED TO THIS OFFICE AT THE TIME OF BRIEFING THE DESIGN. THE DESIGN PROVISIONS FOR FF&E AND EQUIPMENT INCORPORATES SPATIAL ALLOCATIONS, SERVICING, LOADING AND ACCESS CLEARANCES AND WHERE APPROPRIATE SERVICES REQUIREMENTS, HAVING DUE REGARD FOR SURROUNDING FIXTURES AND FITTINGS. IT SHOULD BE NOTED THAT SUBSTITUTE FF&E OR EQUIPMENT WITH ALTERNATE SPECIFICATIONS SHOULD NOT BE PROCURED PRIOR TO VALIDATING THOSE SPECIFICATIONS AGAINST THE ITEM CONTROL SCHEDULE AND DESIGN PROVISIONS IN THE MODEL. THIS OFFICE ACCEPTS NO RESPONSIBILITY FOR THE PROCUREMENT OF SUBSTITUTE FF&E AND EQUIPMENT WHICH HAS NOT BEEN REVIEWED AND VALIDATED AGAINST THE ORIGINAL DESIGN PROVISIONS.

SERVICE POINTS DISCLAIMER

THE SERVICE POINTS IDENTIFIED ON THESE DRAWINGS HAVE BEEN OVERLAYED FROM THE BUILDING SERVICES ENGINEERING MODEL, AND ARE PROVIDED FOR INFORMATION AND SET-OUT PURPOSES ONLY. WE HAVE BEEN ADVISED BY THE SERVICES ENGINEERS THAT THE POINTS REPRESENTED ON THESE DRAWINGS ARE CORRECT AT THE TIME OF PUBLICATION. THIS OFFICE DOES NOT WARRANT THE ACCURACY OF THIS DATA. REFER TO THE BUILDING SERVICES ENGINEERING DOCUMENTATION FOR THE INSTALLATION OF THE SERVICE POINTS, AND THE INTERFACE BETWEEN THE SERVICE POINTS AND THE RESPECTIVE ENGINEERING SYSTEMS.

ISSUED FOR INFORMATION

ARCHITECTS

STH

BATESSMART.

ABN: 21 134 470 905
LEVEL 4, 80 YORK STREET
SYDNEY NSW 2000, AUSTRALIA
PH: (02) 8299 4800 FAX: (03) 9885 2455

M12147
43 BRISBANE STREET
SUNSHY HILLS NSW 2010
ABN: 68 094 740 986 PH: (02) 8354 5100
E: syd@batesmart.com.au

PROJECT MANAGER

CLIENT

PROJECT

TWEED VALLEY HOSPITAL

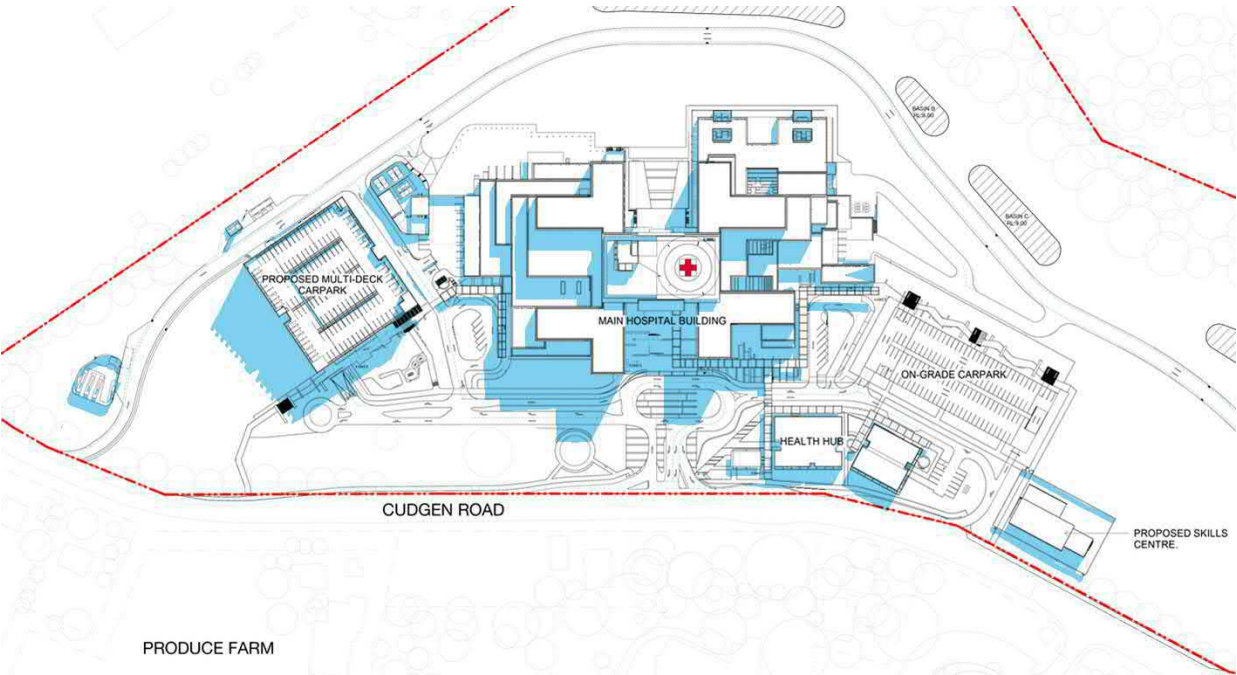
DRAWING TITLE

SHADOW STUDIES
(1 OF 2)

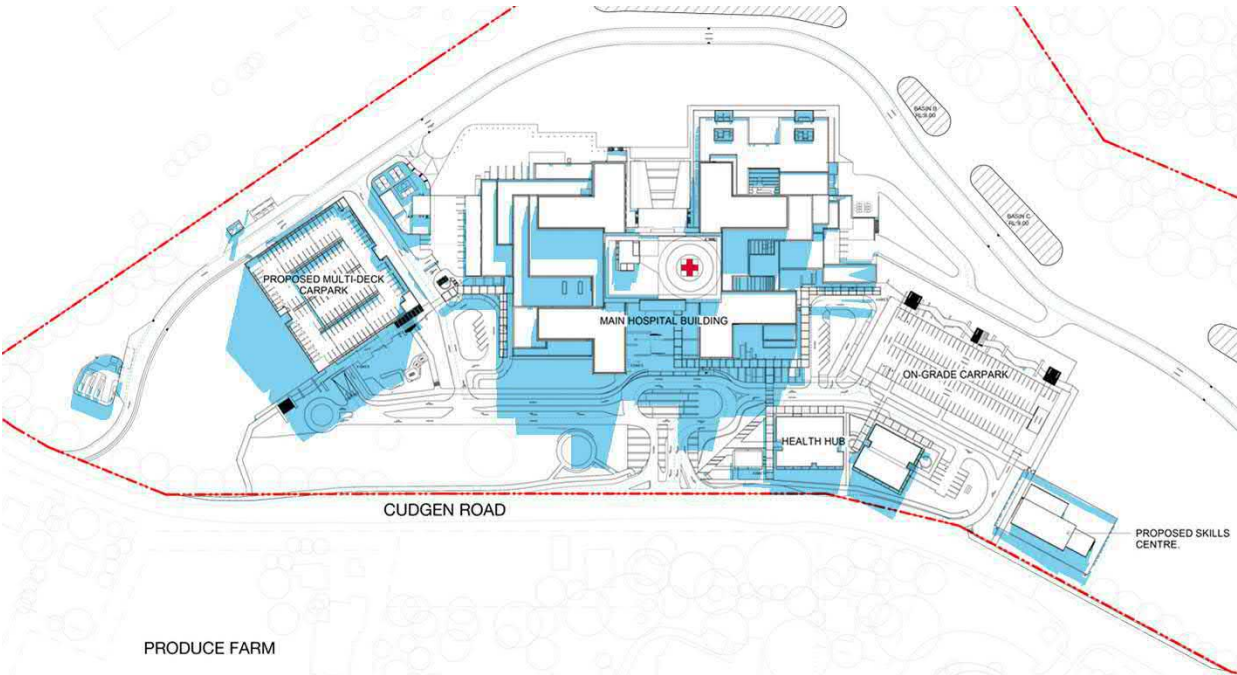
SCALE	DATE	DRAWN BY	CHECKED
As indicated@A1	06/09/19	CE	BS

PROJECT No	DRAWING No	REVISION
10363	STB-AR-SKE-PRW-1000030	1

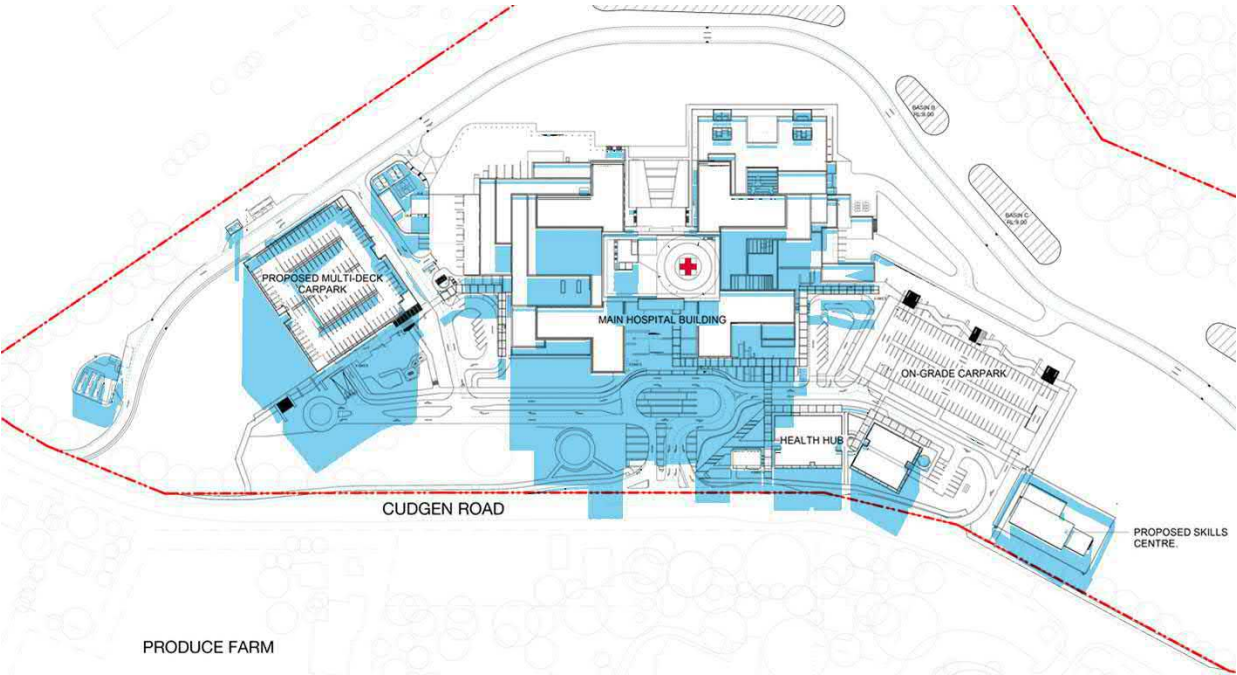
BM 30017 Tweed Valley Hospital/TVH_ESS_SITE_R2018.dwg



21 June - 1pm



21 June - 2pm



21 June - 3pm

KEY PLAN

REV	DESCRIPTION	DRN	DATE
1	ISSUED FOR SSD2	BM	06/09/19

Method of Production

Geometry produced in Revit.
Survey information based on Survey 22633 B, dated 15.06.2018, produced by B & P Surveys.
Shadows generated by Rhinoceros 3D & Vray.
Sunlight system based on MGA 56 Zone.

COPYRIGHT

ALL RIGHTS RESERVED. THIS WORK IS COPYRIGHT AND CANNOT BE REPRODUCED OR COPIED IN ANY FORM OR BY ANY MEANS (GRAPHIC, ELECTRONIC OR MECHANICAL INCLUDING PHOTOCOPYING) WITHOUT THE WRITTEN PERMISSION OF THE PRINCIPAL UNDER THE TERMS OF THE CONTRACT. ANY LICENCE, EXPRESS OR IMPLIED, TO USE THE DOCUMENT FOR ANY PURPOSE WHATSOEVER IS RESTRICTED TO THE TERMS OF THE AGREEMENT OR IMPLIED AGREEMENT WITH THE PRINCIPAL UNDER THE TERMS OF THE CONTRACT.

DIMENSIONS

USE FIGURED DIMENSIONS. DO NOT SCALE. CONTRACTORS MUST VERIFY ALL DIMENSIONS ON THE SITE BEFORE COMMENCING ANY WORK OR MAKING ANY SHOP DRAWING WHICH MUST BE SUBMITTED AND REVIEWED BEFORE MANUFACTURE.

FIXTURES, FITTINGS & EQUIPMENT SPECIFICATIONS

SUBSTITUTE FF&E EQUIPMENT SPECIFICATIONS
THE FIT-OUT DESIGN AND DOCUMENTATION HAS BEEN COMPLETED ON THE BASIS OF FF&E AND EQUIPMENT ADVISED TO THIS OFFICE AT THE TIME OF BRIEFING THE DESIGN. THE DESIGN PROVISIONS FOR FF&E AND EQUIPMENT INCORPORATES SPATIAL ALLOCATIONS, SERVICING, LOADING AND ACCESS CLEARANCES AND WHERE APPROPRIATE SERVICES REQUIREMENTS, HAVING DUE REGARD FOR SURROUNDING FIXTURES AND FITTINGS. IT SHOULD BE NOTED THAT SUBSTITUTE FF&E OR EQUIPMENT WITH ALTERNATE SPECIFICATIONS SHOULD NOT BE PROCURED PRIOR TO VALIDATING THOSE SPECIFICATIONS AGAINST THE ITEM CONTROL SCHEDULE AND DESIGN PROVISIONS IN THE MODEL. THIS OFFICE ACCEPTS NO RESPONSIBILITY FOR THE PROCUREMENT OF SUBSTITUTE FF&E AND EQUIPMENT WHICH HAS NOT BEEN REVIEWED AND VALIDATED AGAINST THE ORIGINAL DESIGN PROVISIONS.

SERVICE POINTS DISCLAIMER

THE SERVICE POINTS IDENTIFIED ON THESE DRAWINGS HAVE BEEN OVERLAYED FROM THE BUILDING SERVICES ENGINEERING MODEL, AND ARE PROVIDED FOR INFORMATION AND SET-OUT PURPOSES ONLY. WE HAVE BEEN ADVISED BY THE SERVICES ENGINEERS THAT THE POINTS REPRESENTED ON THESE DRAWINGS ARE CORRECT AT THE TIME OF PUBLICATION. THIS OFFICE DOES NOT WARRANT THE ACCURACY OF THIS DATA. REFER TO THE BUILDING SERVICES ENGINEERING DOCUMENTATION FOR THE INSTALLATION OF THE SERVICE POINTS, AND THE INTERFACE BETWEEN THE SERVICE POINTS AND THE RESPECTIVE ENGINEERING SYSTEMS.

ISSUED FOR INFORMATION

ARCHITECTS

BATESSMART.

M12147

ABN: 21 134 470 905
LEVEL 4, 80 YORK STREET
SYDNEY NSW 2000, AUSTRALIA
PH: (02) 8299 4800 FAX: (03) 9885 2455

43 BRISBANE STREET
SURREY HILLS NSW 2010
ABN: 68 094 740 986 PH: (02) 8354 5100
E: syd@batesmart.com.au

THIS ARCHITECTURAL DESIGN IS THE COPYRIGHT OF SILVER THOMAS HANLEY AND BATES SMART AND SHALL NOT BE REPRODUCED WITHOUT THEIR WRITTEN PERMISSION

PROJECT MANAGER

TSA
MANAGEMENT

CLIENT

Health
Infrastructure

Health
Northern NSW
Local Health District

PROJECT

TWEED VALLEY HOSPITAL

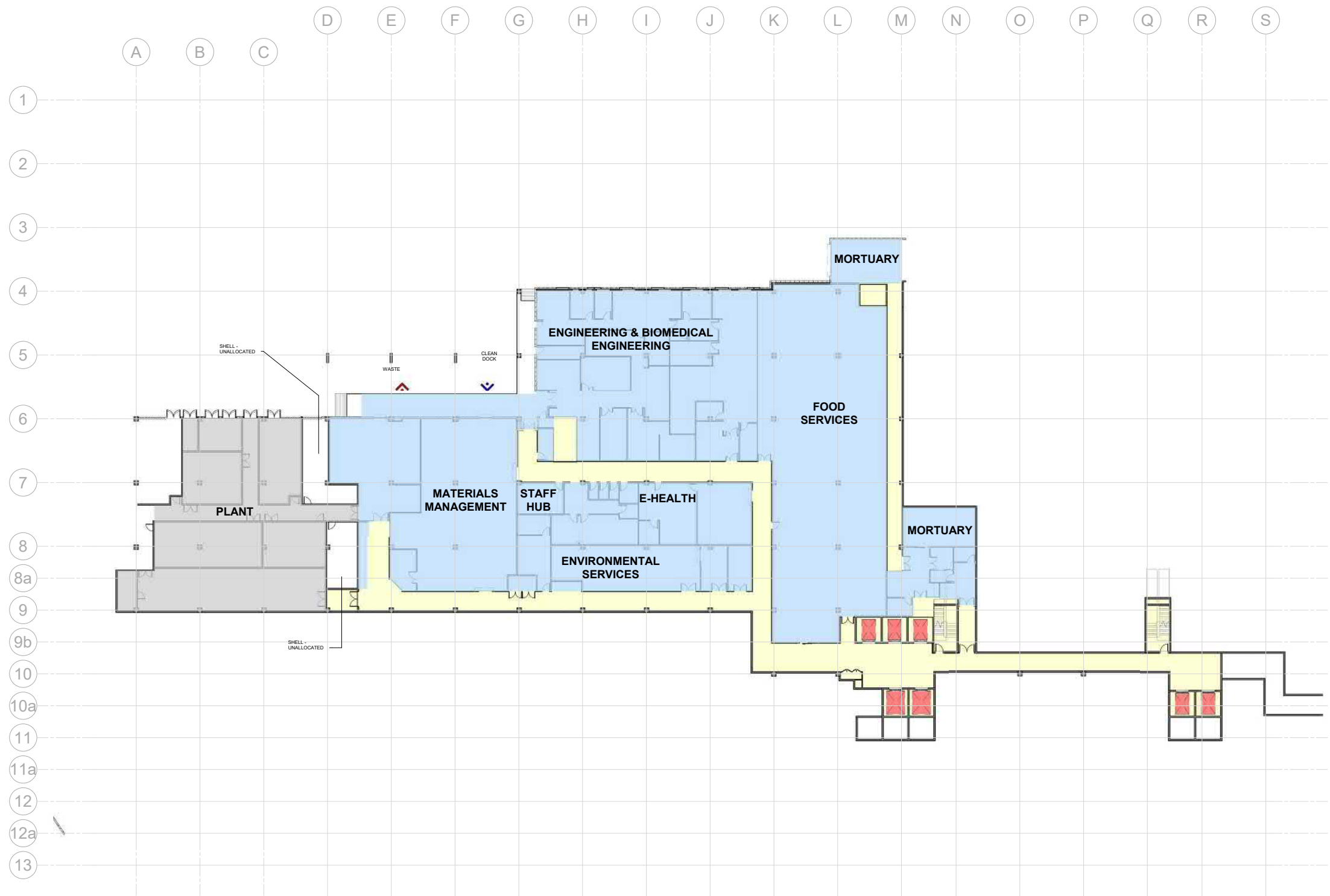
DRAWING TITLE

SHADOW STUDIES
(2 OF 2)

SCALE	DATE	DRAWN BY	CHECKED
As indicated@A1	06/09/19	BM	BS

PROJECT No	DRAWING No	REVISION
10363	STB-AR-SKE-PRW-1000031	1

BIM 3000/Tweed Valley Hospital/TVH_BS_SITE_R2018.dwg



KEY PLAN

REV	DESCRIPTION	DRN	DATE
1	ISSUED FOR SSD 2	RN	06/09/19

COPYRIGHT

ALL RIGHTS RESERVED. THIS WORK IS COPYRIGHT AND CANNOT BE REPRODUCED OR COPIED IN ANY FORM OR BY ANY MEANS (GRAPHIC, ELECTRONIC OR MECHANICAL, INCLUDING PHOTOCOPYING) WITHOUT THE WRITTEN PERMISSION OF THE PRINCIPAL. UNDER THE TERMS OF THE CONTRACT, ANY LICENCE, EXPRESS OR IMPLIED, TO USE THE DOCUMENT FOR ANY PURPOSE WHATSOEVER IS RESTRICTED TO THE TERMS OF THE AGREEMENT OR IMPLIED AGREEMENT WITH THE PRINCIPAL UNDER THE TERMS OF THE CONTRACT.

DIMENSIONS

USE FIGURED DIMENSIONS. DO NOT SCALE. CONTRACTORS MUST VERIFY ALL DIMENSIONS ON THE SITE BEFORE COMMENCING ANY WORK OR MAKING ANY SHOP DRAWING WHICH MUST BE SUBMITTED AND REVIEWED BEFORE MANUFACTURE.

FIXTURES, FITTINGS & EQUIPMENT SPECIFICATIONS

SUBSTITUTE FF&E EQUIPMENT SPECIFICATIONS
THE FIT-OUT DESIGN AND DOCUMENTATION HAS BEEN COMPLETED ON THE BASIS OF FF&E AND EQUIPMENT ADVISED TO THIS OFFICE AT THE TIME OF BRIEFING THE DESIGN. THE DESIGN PROVISIONS FOR FF&E AND EQUIPMENT INCORPORATES SPATIAL ALLOCATIONS, SERVICING, LOADING AND ACCESS CLEARANCES AND WHERE APPROPRIATE SERVICES REQUIREMENTS, HAVING DUE REGARD FOR SURROUNDING FIXTURES AND FITTINGS. IT SHOULD BE NOTED THAT SUBSTITUTE FF&E OR EQUIPMENT WITH ALTERNATE SPECIFICATIONS SHOULD NOT BE PROCURED PRIOR TO VALIDATING THESE SPECIFICATIONS AGAINST THE ITEM CONTROL, SCHEDULE AND DESIGN PROVISIONS IN THE MODEL. THIS OFFICE ACCEPTS NO RESPONSIBILITY FOR THE PROCUREMENT OF SUBSTITUTE FF&E AND EQUIPMENT WHICH HAS NOT BEEN REVIEWED AND VALIDATED AGAINST THE ORIGINAL DESIGN PROVISIONS.

SERVICE POINTS DISCLAIMER

THE SERVICE POINTS IDENTIFIED ON THESE DRAWINGS HAVE BEEN OVERLAYED FROM THE BUILDING SERVICES ENGINEERING MODEL, AND ARE PROVIDED FOR INFORMATION AND SET-OUT PURPOSES ONLY. WE HAVE BEEN ADVISED BY THE SERVICES ENGINEERS THAT THE POINTS REPRESENTED ON THESE DRAWINGS ARE CORRECT AT THE TIME OF PUBLICATION. THIS OFFICE DOES NOT WARRANT THE ACCURACY OF THIS DATA REFER TO THE BUILDING SERVICES ENGINEERING DOCUMENTATION FOR THE INSTALLATION OF THE SERVICES POINTS, AND THE INTERFACE BETWEEN THE SERVICES POINTS AND THE RESPECTIVE ENGINEERING SYSTEMS.

ISSUED FOR INFORMATION

ARCHITECTS

BATESSMART.

M12147

ABN: 21 134 476 005
LEVEL 4, 80 YORK STREET
SYDNEY NSW 2000, AUSTRALIA
PH: (02) 8299 4600 FAX: (02) 9885 2455

43 BRISBANE STREET,
SUNBURY HILLS NSW 2010
ABN: 66 094 740 966 PH: (02) 8354 5100
E: syd@batesmart.com.au

THIS ARCHITECTURAL DESIGN IS THE COPYRIGHT OF SILVER THOMAS HANLEY AND BATES SMART AND SHALL NOT BE REPRODUCED WITHOUT THEIR WRITTEN PERMISSION

PROJECT MANAGER

TSA
MANAGEMENT

CLIENT

NSW
GOVERNMENT

Health
Infrastructure

Health
Northern NSW
Local Health District

PROJECT

TWEED VALLEY HOSPITAL

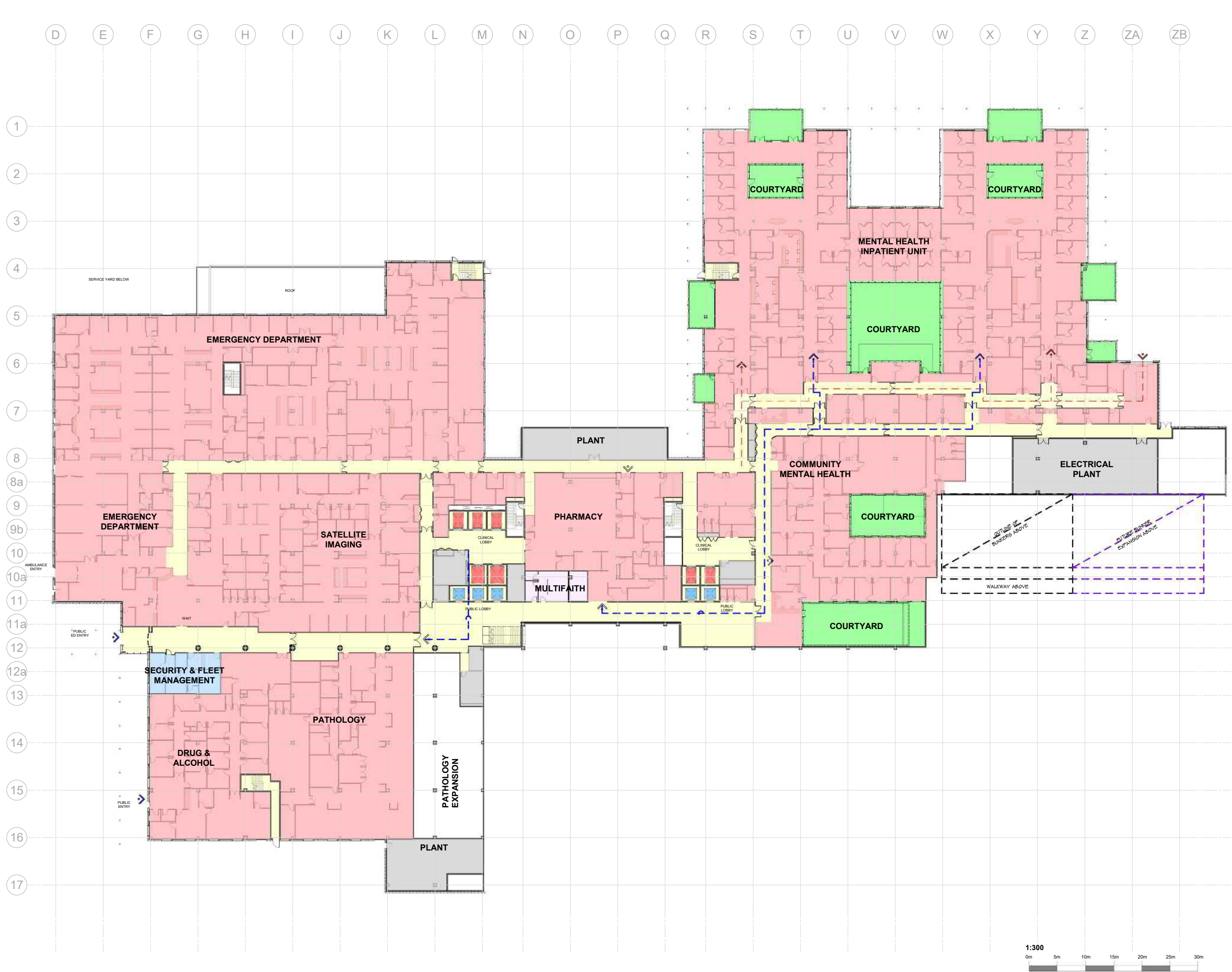
DRAWING TITLE

**GENERAL ARRANGEMENT PLAN
BASEMENT**

SCALE	DATE	DRAWN BY	CHECKED
1 : 300@A1	06/09/19	RN	AB

PROJECT No	DRAWING No	REVISION
10363	STH-AR-SKE-MHB-200B1001	1

BIM 300 - Tweed Valley Hospital V4 - BUILDING - R10.dwg



KEY PLAN

REV	DESCRIPTION	DRN	DATE
1	ISSUED FOR SSD 2	RN	06/09/19

COPYRIGHT
ALL RIGHTS RESERVED. THIS WORK IS COPYRIGHT AND CANNOT BE REPRODUCED OR COPIED IN ANY FORM OR BY ANY MEANS (GRAPHIC, ELECTRONIC OR MECHANICAL, INCLUDING PHOTOCOPIING) WITHOUT THE WRITTEN PERMISSION OF THE PRINCIPAL UNDER THE TERMS OF THE CONTRACT. ANY LICENCE, EXPRESS OR IMPLIED, TO USE THE DOCUMENT FOR ANY PURPOSE WHATSOEVER IS RESTRICTED TO THE TERMS OF THE AGREEMENT OR IMPLIED AGREEMENT WITH THE PRINCIPAL UNDER THE TERMS OF THE CONTRACT.

DIMENSIONS
USE FIGURED DIMENSIONS. DO NOT SCALE. CONTRACTORS MUST VERIFY ALL DIMENSIONS ON THE SITE BEFORE COMMENCING ANY WORK OR MAKING ANY SHOP DRAWING WHICH MUST BE SUBMITTED AND REVIEWED BEFORE MANUFACTURE.

FIXTURES, FITTINGS & EQUIPMENT SPECIFICATIONS
SUBSTITUTE FF&E EQUIPMENT SPECIFICATIONS
THE FIT-OUT DESIGN AND DOCUMENTATION HAS BEEN COMPLETED ON THE BASIS OF FF&E AND EQUIPMENT ADVISED TO THIS OFFICE AT THE TIME OF BRIEFING THE DESIGN. THE DESIGN PROVISIONS FOR FF&E AND EQUIPMENT INCORPORATES SPATIAL ALLOCATIONS, SERVICING, LOADING AND ACCESS CLEARANCES AND WHERE APPROPRIATE SERVICES REQUIREMENTS, HAVING DUE REGARD FOR SURROUNDING FIXTURES AND FITTINGS. IT SHOULD BE NOTED THAT SUBSTITUTE FF&E OR EQUIPMENT WITH ALTERNATE SPECIFICATIONS SHOULD NOT BE PROCURED PRIOR TO VALIDATING THESE SPECIFICATIONS AGAINST THE ITEM CONTROL, SCHEDULE AND DESIGN PROVISIONS IN THE MODEL. THIS OFFICE ACCEPTS NO RESPONSIBILITY FOR THE PROCUREMENT OF SUBSTITUTE FF&E AND EQUIPMENT WHICH HAS NOT BEEN REVIEWED AND VALIDATED AGAINST THE ORIGINAL DESIGN PROVISIONS.

SERVICE POINTS DISCLAIMER
THE SERVICE POINTS IDENTIFIED ON THESE DRAWINGS HAVE BEEN OVERLAYED FROM THE BUILDING SERVICES ENGINEERING MODEL, AND ARE PROVIDED FOR INFORMATION AND SET-OUT PURPOSES ONLY. WE HAVE BEEN ADVISED BY THE SERVICES ENGINEERS THAT THE POINTS REPRESENTED ON THESE DRAWINGS ARE CORRECT AT THE TIME OF PUBLICATION. THIS OFFICE DOES NOT WARRANT THE ACCURACY OF THIS DATA REFER TO THE BUILDING SERVICES ENGINEERING DOCUMENTATION FOR THE INSTALLATION OF THE SERVICES POINTS, AND THE INTERFACE BETWEEN THE SERVICES POINTS AND THE RESPECTIVE ENGINEERING SYSTEMS.

ISSUED FOR INFORMATION
ARCHITECTS

M12147

ABN: 21 134 476 005
LEVEL 4, 80 YORK STREET
SYDNEY NSW 2000, AUSTRALIA
PH: (02) 8299 4600 FAX: (02) 9685 2455

43 BRISBANE STREET,
SUNSHY HILLS NSW 2010
ABN: 66 094 740 966 PH: (02) 8354 5100
E: syd@batesmart.com.au

THIS ARCHITECTURAL DESIGN IS THE COPYRIGHT OF SILVER THOMAS HANLEY AND BATES SMART AND SHALL NOT BE REPRODUCED WITHOUT THEIR WRITTEN PERMISSION

PROJECT MANAGER

CLIENT

PROJECT

TWEED VALLEY HOSPITAL

DRAWING TITLE

**GENERAL ARRANGEMENT PLAN
LOWER GROUND**

SCALE

DATE

DRAWN BY

CHECKED

1 : 300@A1

06/09/19

RN

AB

PROJECT No

DRAWING No

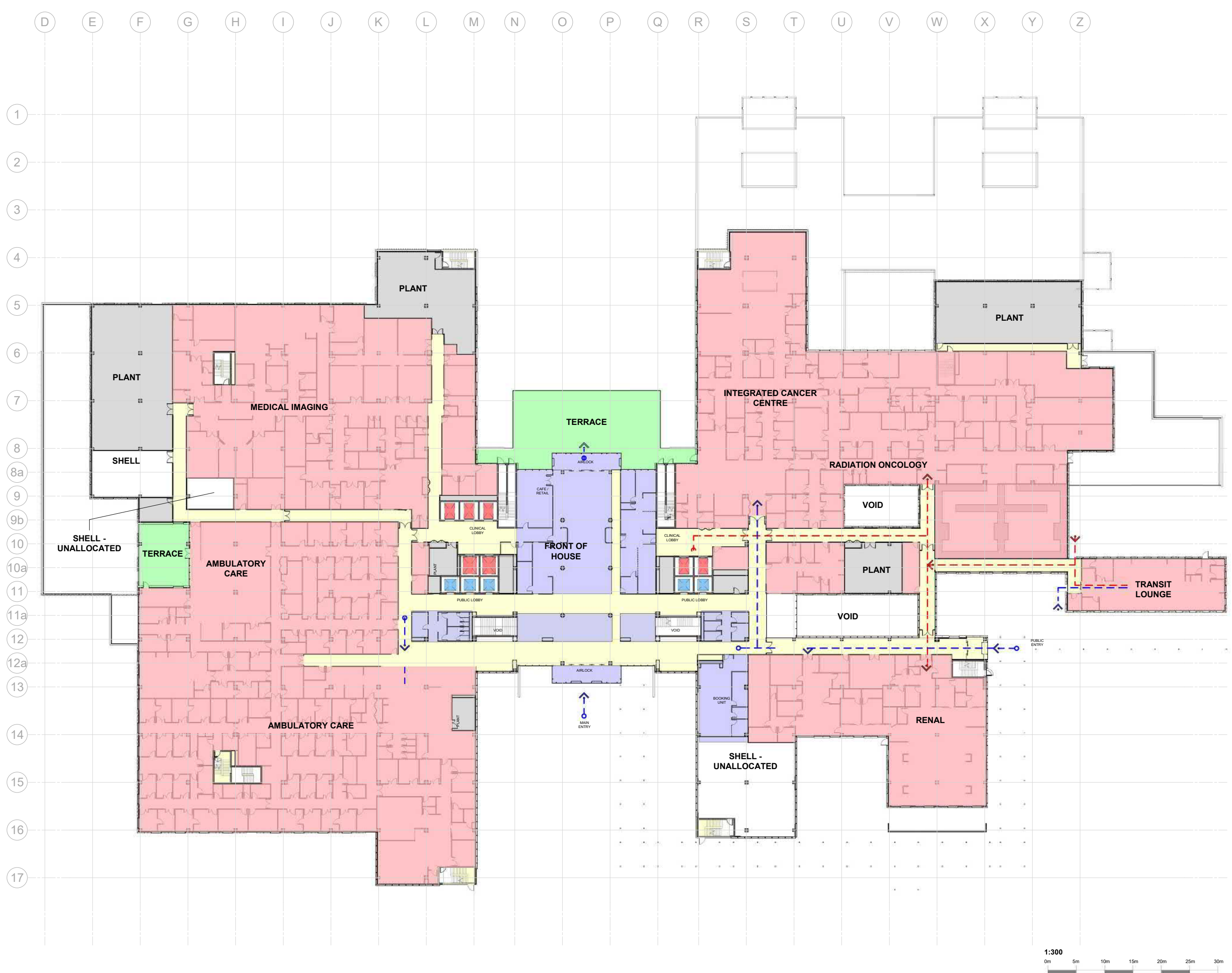
REVISION

10363

STH-AR-SKE-MHB-200LG001

1

BIM 3000 Tweed Valley Hospital VHL BUILDINGS_R103.dwg



KEY PLAN

REV	DESCRIPTION	DRN	DATE
1	ISSUED FOR SSD 2	RN	06/09/19

COPYRIGHT
ALL RIGHTS RESERVED. THIS WORK IS COPYRIGHT AND CANNOT BE REPRODUCED OR COPIED IN ANY FORM OR BY ANY MEANS (GRAPHIC, ELECTRONIC OR MECHANICAL, INCLUDING PHOTOCOPYING WITHOUT THE WRITTEN PERMISSION OF THE PRINCIPAL UNDER THE TERMS OF THE CONTRACT. ANY LICENCE, EXPRESS OR IMPLIED, TO USE THE DOCUMENT FOR ANY PURPOSE WHATSOEVER IS RESTRICTED TO THE TERMS OF THE AGREEMENT OR IMPLIED AGREEMENT WITH THE PRINCIPAL UNDER THE TERMS OF THE CONTRACT.

DIMENSIONS
USE FIGURED DIMENSIONS. DO NOT SCALE. CONTRACTORS MUST VERIFY ALL DIMENSIONS ON THE SITE BEFORE COMMENCING ANY WORK OR MAKING ANY SHOP DRAWING WHICH MUST BE SUBMITTED AND REVIEWED BEFORE MANUFACTURE.

FIXTURES, FITTINGS & EQUIPMENT SPECIFICATIONS
SUBSTITUTE FF&E EQUIPMENT SPECIFICATIONS
THE FIT-OUT DESIGN AND DOCUMENTATION HAS BEEN COMPLETED ON THE BASIS OF FF&E AND EQUIPMENT ADVISED TO THIS OFFICE AT THE TIME OF BRIEFING THE DESIGN. THE DESIGN PROVISIONS FOR FF&E AND EQUIPMENT INCORPORATES SPATIAL ALLOCATIONS, SERVICING, LOADING AND ACCESS CLEARANCES AND WHERE APPROPRIATE SERVICES REQUIREMENTS, HAVING DUE REGARD FOR SURROUNDING FIXTURES AND FITTINGS. IT SHOULD BE NOTED THAT SUBSTITUTE FF&E OR EQUIPMENT WITH ALTERNATE SPECIFICATIONS SHOULD NOT BE PROCURED PRIOR TO VALIDATING THESE SPECIFICATIONS AGAINST THE ITEM CONTROL, SCHEDULE AND DESIGN PROVISIONS IN THE MODEL. THIS OFFICE ACCEPTS NO RESPONSIBILITY FOR THE PROCUREMENT OF SUBSTITUTE FF&E AND EQUIPMENT WHICH HAS NOT BEEN REVIEWED AND VALIDATED AGAINST THE ORIGINAL DESIGN PROVISIONS.

SERVICE POINTS DISCLAIMER
THE SERVICE POINTS IDENTIFIED ON THESE DRAWINGS HAVE BEEN OVERLAYED FROM THE BUILDING SERVICES ENGINEERING MODEL, AND ARE PROVIDED FOR INFORMATION AND SET-OUT PURPOSES ONLY. WE HAVE BEEN ADVISED BY THE SERVICES ENGINEERS THAT THE POINTS REPRESENTED ON THESE DRAWINGS ARE CORRECT AT THE TIME OF PUBLICATION. THIS OFFICE DOES NOT WARRANT THE ACCURACY OF THIS DATA. REFER TO THE BUILDING SERVICES ENGINEERING DOCUMENTATION FOR THE INSTALLATION OF THE SERVICES POINTS, AND THE INTERFACE BETWEEN THE SERVICES POINTS AND THE RESPECTIVE ENGINEERING SYSTEMS.

ISSUED FOR INFORMATION

ARCHITECTS

M12147
43 BRISBANE STREET,
SURRY HILLS, NSW 2010
ABN: 68 094 740 966 PH: (02) 8354 5100
E: syd@batesmart.com.au

ABN: 21 134 476 065
LEVEL 4, 80 YORK STREET
SYDNEY NSW 2000, AUSTRALIA
PH: (02) 8299 4600 FAX: (02) 9885 2455

THIS ARCHITECTURAL DESIGN IS THE COPYRIGHT OF SILVER THOMAS HANLEY AND BATES SMART AND SHALL NOT BE REPRODUCED WITHOUT THEIR WRITTEN PERMISSION

PROJECT MANAGER

CLIENT

PROJECT

TWEED VALLEY HOSPITAL

DRAWING TITLE

GENERAL ARRANGEMENT PLAN
GROUND

SCALE: 1:300@A1 DATE: 06/09/19 DRAWN BY: RN CHECKED: AB

PROJECT No: 10363 DRAWING No: STH-AR-SKE-MHB-20000001 REVISION: 1

1:300

BIM 300 / Tweed Valley Hospital / VAL BUILDINGS / R103.04

D E F G H I J K L M N O P Q R S T U V W X Y Z

4

5

6

7

8

8a

9

9b

10

10a

11

11a

12

12a

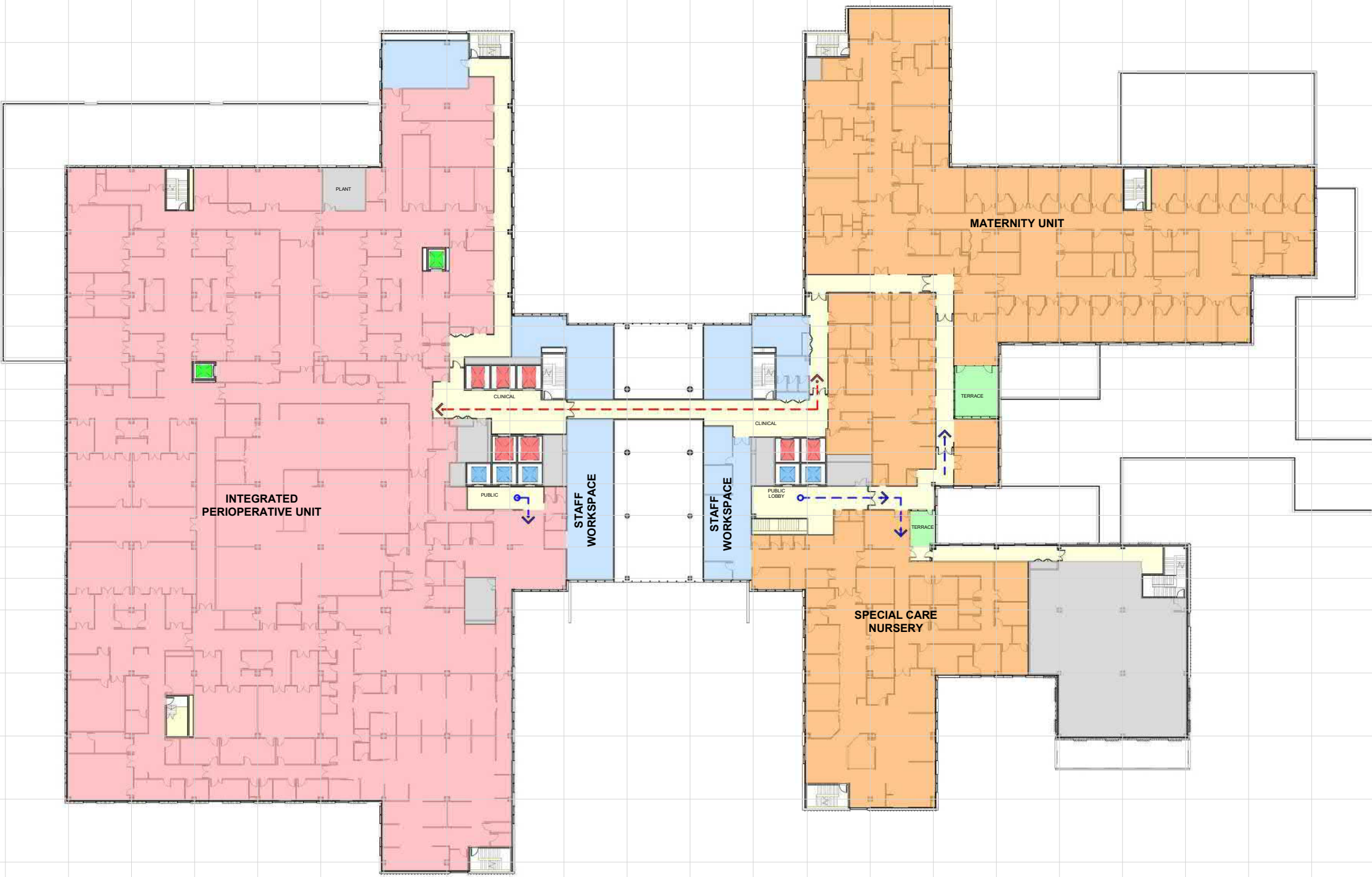
13

14

15

16

17



KEY PLAN



REV	DESCRIPTION	DRN	DATE
1	ISSUED FOR SSD 2	RN	06/09/19

COPYRIGHT

ALL RIGHTS RESERVED. THIS WORK IS COPYRIGHT AND CANNOT BE REPRODUCED OR COPIED IN ANY FORM OR BY ANY MEANS (GRAPHIC, ELECTRONIC OR MECHANICAL, INCLUDING PHOTOCOPYING) WITHOUT THE WRITTEN PERMISSION OF THE PRINCIPAL. UNDER THE TERMS OF THE CONTRACT, ANY LICENCE, EXPRESS OR IMPLIED, TO USE THE DOCUMENT FOR ANY PURPOSE WHATSOEVER IS RESTRICTED TO THE TERMS OF THE AGREEMENT OR IMPLIED AGREEMENT WITH THE PRINCIPAL UNDER THE TERMS OF THE CONTRACT.

DIMENSIONS

USE FIGURED DIMENSIONS. DO NOT SCALE. CONTRACTORS MUST VERIFY ALL DIMENSIONS ON THE SITE BEFORE COMMENCING ANY WORK OR MAKING ANY SHOP DRAWING WHICH MUST BE SUBMITTED AND REVIEWED BEFORE MANUFACTURE.

FIXTURES, FITTINGS & EQUIPMENT SPECIFICATIONS

SUBSTITUTE FF&E EQUIPMENT SPECIFICATIONS
THE FIT-OUT DESIGN AND DOCUMENTATION HAS BEEN COMPLETED ON THE BASIS OF FF&E AND EQUIPMENT ADVISED TO THIS OFFICE AT THE TIME OF BRIEFING THE DESIGN. THE DESIGN PROVISIONS FOR FF&E AND EQUIPMENT INCORPORATES SPATIAL ALLOCATIONS, SERVING, LOADING AND ACCESS CLEARANCES AND WHERE APPROPRIATE SERVICES REQUIREMENTS, HAVING DUE REGARD FOR SURROUNDING FIXTURES AND FITTINGS. IT SHOULD BE NOTED THAT SUBSTITUTE FF&E OR EQUIPMENT WITH ALTERNATE SPECIFICATIONS SHOULD NOT BE PROCURED PRIOR TO VALIDATING THESE SPECIFICATIONS AGAINST THE ITEM CONTROL, SCHEDULE AND DESIGN PROVISIONS IN THE MODEL. THIS OFFICE ACCEPTS NO RESPONSIBILITY FOR THE PROCUREMENT OF SUBSTITUTE FF&E AND EQUIPMENT WHICH HAS NOT BEEN REVIEWED AND VALIDATED AGAINST THE ORIGINAL DESIGN PROVISIONS.

SERVICE POINTS DISCLAIMER

THE SERVICE POINTS IDENTIFIED ON THESE DRAWINGS HAVE BEEN OVERLAYED FROM THE BUILDING SERVICES ENGINEERING MODEL, AND ARE PROVIDED FOR INFORMATION AND SET-OUT PURPOSES ONLY. WE HAVE BEEN ADVISED BY THE SERVICES ENGINEERS THAT THE POINTS REPRESENTED ON THESE DRAWINGS ARE CORRECT AT THE TIME OF PUBLICATION. THIS OFFICE DOES NOT WARRANT THE ACCURACY OF THIS DATA. REFER TO THE BUILDING SERVICES ENGINEERING DOCUMENTATION FOR THE INSTALLATION OF THE SERVICES POINTS, AND THE INTERFACE BETWEEN THE SERVICES POINTS AND THE RESPECTIVE ENGINEERING SYSTEMS.

ISSUED FOR INFORMATION

ARCHITECTS



M12147
ABN: 21 134 476 005
LEVEL 4, 80 YORK STREET
SYDNEY NSW 2000, AUSTRALIA
PH: (02) 8299 4600 FAX: (02) 9885 2455
43 BRISBANE STREET,
SURRY HILLS NSW 2010
ABN: 66 094 740 966 PH: (02) 8354 5100
E: syd@batesmart.com.au

THIS ARCHITECTURAL DESIGN IS THE COPYRIGHT OF SILVER THOMAS HANLEY AND BATES SMART AND SHALL NOT BE REPRODUCED WITHOUT THEIR WRITTEN PERMISSION

PROJECT MANAGER



CLIENT



PROJECT

TWEED VALLEY HOSPITAL

DRAWING TITLE

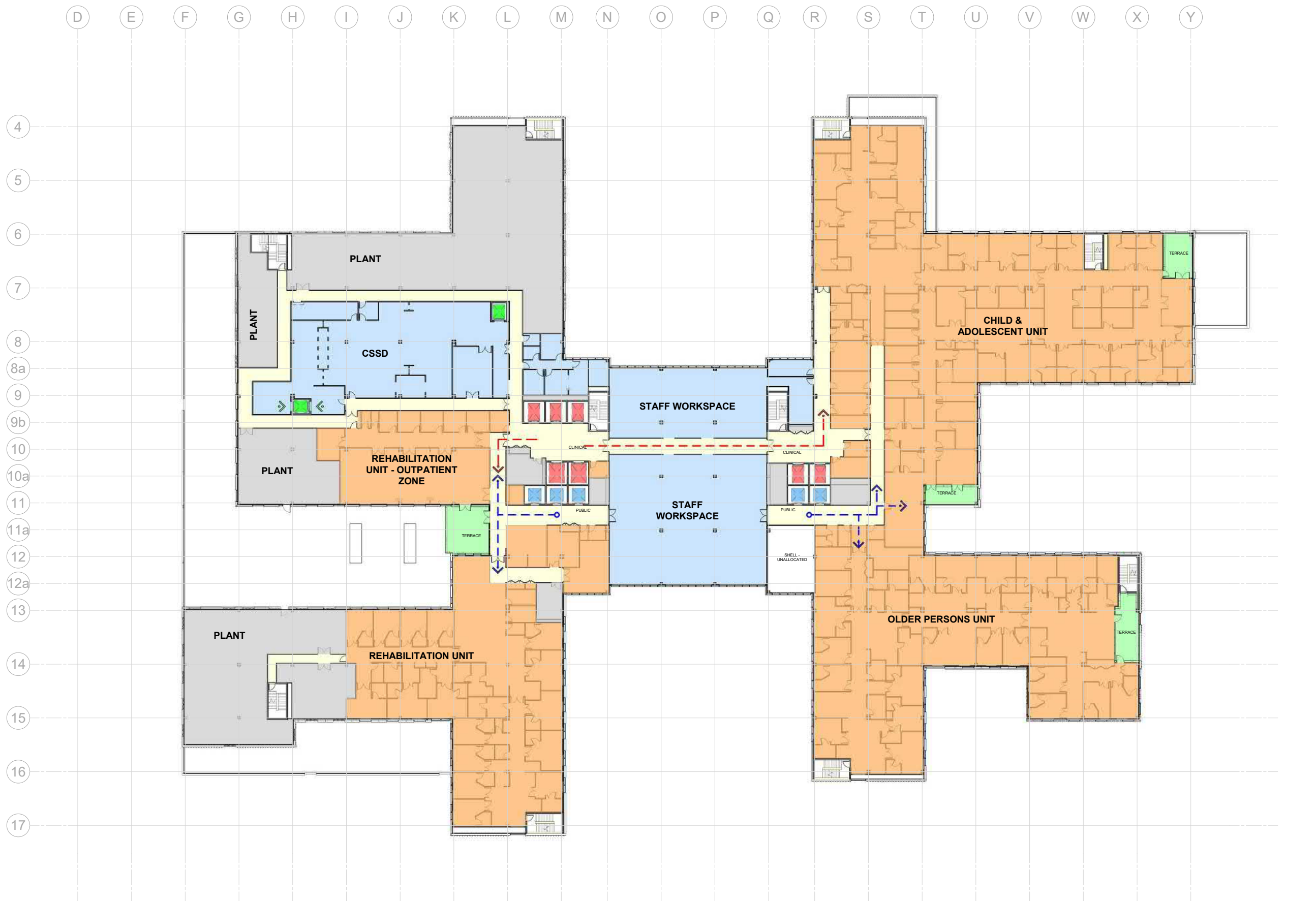
**GENERAL ARRANGEMENT PLAN
LEVEL 01**

SCALE DATE DRAWN BY CHECKED
1 : 300@A1 06/09/19 RN AB

PROJECT No DRAWING No REVISION

10363 STH-AR-SKE-MHB-20001001 1





KEY PLAN

REV

DESCRIPTION

DRN

DATE

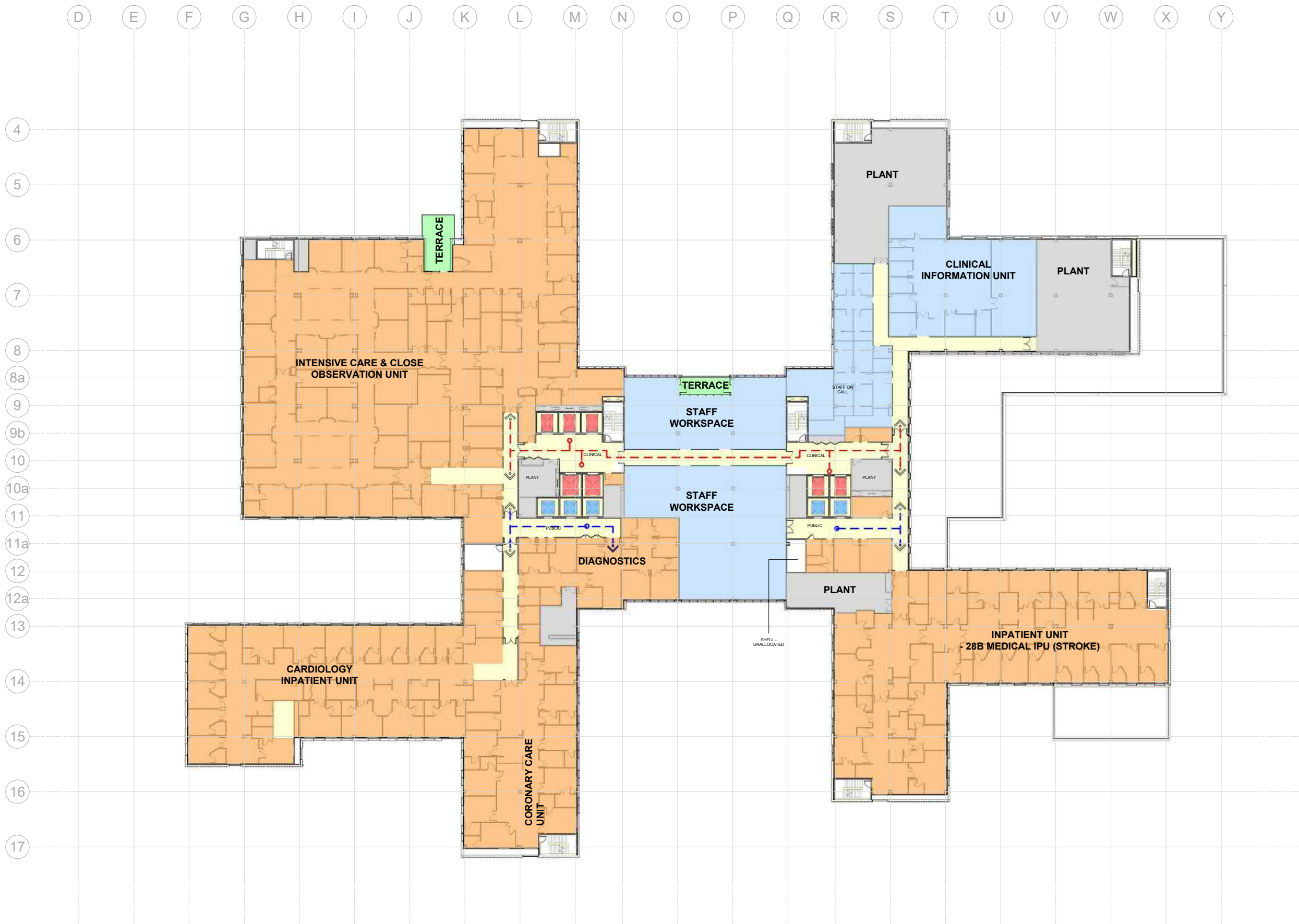
1

ISSUED FOR SSD 2

RN

06/09/19

<



KEY PLAN			
REV	DESCRIPTION	DRN	DATE
1	ISSUED FOR SSD 2	RN	06/09/19

COPYRIGHT
ALL RIGHTS RESERVED. THIS WORK IS COPYRIGHT AND CANNOT BE REPRODUCED OR COPIED IN ANY FORM OR BY ANY MEANS (GRAPHIC, ELECTRONIC OR MECHANICAL, INCLUDING PHOTOCOPYING) WITHOUT THE WRITTEN PERMISSION OF THE PRINCIPAL. UNDER THE TERMS OF THE CONTRACT, ANY LICENCE, EXPRESS OR IMPLIED, TO USE THE DOCUMENT FOR ANY PURPOSE WHATSOEVER IS RESTRICTED TO THE TERMS OF THE AGREEMENT OR IMPLIED AGREEMENT WITH THE PRINCIPAL UNDER THE TERMS OF THE CONTRACT.

DIMENSIONS
USE FIGURED DIMENSIONS. DO NOT SCALE. CONTRACTORS MUST VERIFY ALL DIMENSIONS ON THE SITE BEFORE COMMENCING ANY WORK OR MAKING ANY SHOP DRAWING WHICH MUST BE SUBMITTED AND REVIEWED BEFORE MANUFACTURE.

FIXTURES, FITTINGS & EQUIPMENT SPECIFICATIONS
SUBSTITUTE FF&E EQUIPMENT SPECIFICATIONS
THE FIT-OUT DESIGN AND DOCUMENTATION HAS BEEN COMPLETED ON THE BASIS OF FF&E AND EQUIPMENT ADVISED TO THIS OFFICE AT THE TIME OF BRIEFING THE DESIGN. THE DESIGN PROVISIONS FOR FF&E AND EQUIPMENT INCORPORATES SPATIAL ALLOCATIONS, SERVING, LOADING AND ACCESS CLEARANCES AND WHERE APPROPRIATE SERVICES REQUIREMENTS, HAVING DUE REGARD FOR SURROUNDING FIXTURES AND FITTINGS. IT SHOULD BE NOTED THAT SUBSTITUTE FF&E OR EQUIPMENT WITH ALTERNATE SPECIFICATIONS SHOULD NOT BE PROCURED PRIOR TO VALIDATING THESE SPECIFICATIONS AGAINST THE ITEM CONTROL, SCHEDULE AND DESIGN PROVISIONS IN THE MODEL. THIS OFFICE ACCEPTS NO RESPONSIBILITY FOR THE PROCUREMENT OF SUBSTITUTE FF&E AND EQUIPMENT WHICH HAS NOT BEEN REVIEWED AND VALIDATED AGAINST THE ORIGINAL DESIGN PROVISIONS.

SERVICE POINTS DISCLAIMER
THE SERVICE POINTS IDENTIFIED ON THESE DRAWINGS HAVE BEEN OVERLAIN FROM THE BUILDING SERVICES ENGINEERING MODEL, AND ARE PROVIDED FOR INFORMATION AND SET-OUT PURPOSES ONLY. WE HAVE BEEN ADVISED BY THE SERVICES ENGINEERS THAT THE POINTS REPRESENTED ON THESE DRAWINGS ARE CORRECT AT THE TIME OF PUBLICATION. THIS OFFICE DOES NOT WARRANT THE ACCURACY OF THIS DATA. REFER TO THE BUILDING SERVICES ENGINEERING DOCUMENTATION FOR THE INSTALLATION OF THE SERVICES POINTS, AND THE INTERFACE BETWEEN THE SERVICES POINTS AND THE RESPECTIVE ENGINEERING SYSTEMS.

ISSUED FOR INFORMATION

ARCHITECTS

STH

BATESSMART.

ABN: 21 134 476 005
LEVEL 4, 80 YORK STREET
SYDNEY NSW 2000, AUSTRALIA
PH: (02) 8299 4600 FAX: (02) 9885 2455

M12147
43 BRISBANE STREET,
SURRY HILLS NSW 2010
ABN: 66 094 740 966 PH: (02) 8354 5100
E: syd@batesmart.com.au

THIS ARCHITECTURAL DESIGN IS THE COPYRIGHT OF SILVER THOMAS HANLEY AND BATES SMART AND SHALL NOT BE REPRODUCED WITHOUT THEIR WRITTEN PERMISSION

PROJECT MANAGER

TSA

MANAGEMENT

CLIENT

NSW GOVERNMENT

Health Infrastructure

Health Northern NSW Local Health District

TWEED VALLEY HOSPITAL

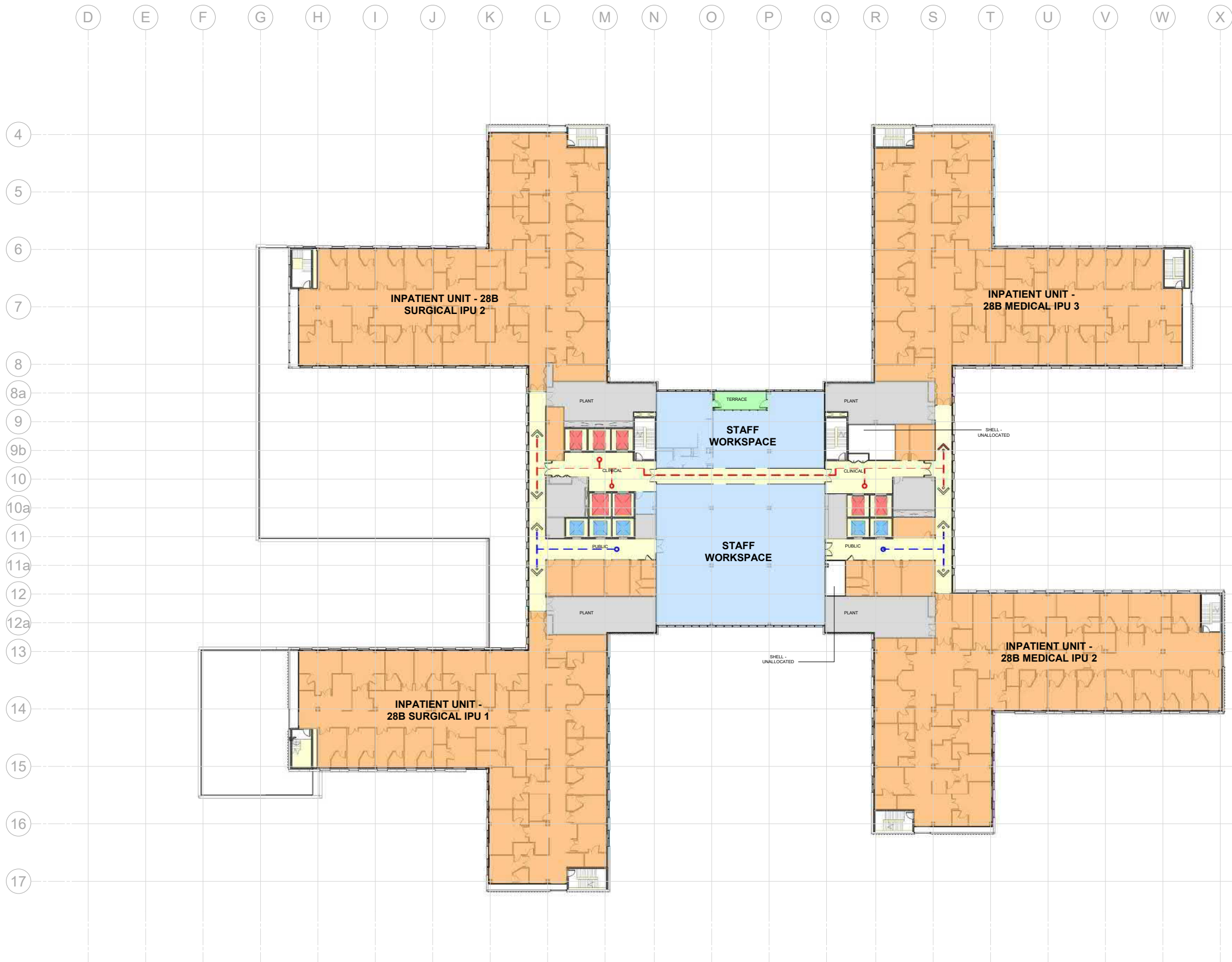
DRAWING TITLE

GENERAL ARRANGEMENT PLAN
LEVEL 03

SCALE: 1:300@A1 DATE: 06/09/19 DRAWN BY: RN CHECKED: AB

PROJECT No: 10363 DRAWING No: STH-AR-SKE-MHB-20003001 REVISION: 1





KEY PLAN			
REV	DESCRIPTION	DRN	DATE
1	ISSUED FOR SSD 2	RN	06/09/19

COPYRIGHT
ALL RIGHTS RESERVED. THIS WORK IS COPYRIGHT AND CANNOT BE REPRODUCED OR COPIED IN ANY FORM OR BY ANY MEANS (GRAPHIC, ELECTRONIC OR MECHANICAL, INCLUDING PHOTOCOPIING) WITHOUT THE WRITTEN PERMISSION OF THE PRINCIPAL UNDER THE TERMS OF THE CONTRACT. ANY LICENCE, EXPRESS OR IMPLIED, TO USE THE DOCUMENT FOR ANY PURPOSE WHATSOEVER IS RESTRICTED TO THE TERMS OF THE AGREEMENT OR IMPLIED AGREEMENT WITH THE PRINCIPAL UNDER THE TERMS OF THE CONTRACT.

DIMENSIONS
USE FIGURED DIMENSIONS. DO NOT SCALE. CONTRACTORS MUST VERIFY ALL DIMENSIONS ON THE SITE BEFORE COMMENCING ANY WORK OR MAKING ANY SHOP DRAWING WHICH MUST BE SUBMITTED AND REVIEWED BEFORE MANUFACTURE.

FIXTURES, FITTINGS & EQUIPMENT SPECIFICATIONS
SUBSTITUTE FF&E EQUIPMENT SPECIFICATIONS
THE FIT-OUT DESIGN AND DOCUMENTATION HAS BEEN COMPLETED ON THE BASIS OF FF&E AND EQUIPMENT ADVISED TO THIS OFFICE AT THE TIME OF BRIEFING THE DESIGN. THE DESIGN PROVISIONS FOR FF&E AND EQUIPMENT INCORPORATES SPATIAL ALLOCATIONS, SERVICING, LOADING AND ACCESS CLEARANCES AND WHERE APPROPRIATE SERVICES REQUIREMENTS, HAVING DUE REGARD FOR SURROUNDING FIXTURES AND FITTINGS. IT SHOULD BE NOTED THAT SUBSTITUTE FF&E OR EQUIPMENT WITH ALTERNATE SPECIFICATIONS SHOULD NOT BE PROCURED PRIOR TO VALIDATING THESE SPECIFICATIONS AGAINST THE ITEM CONTROL, SCHEDULE AND DESIGN PROVISIONS IN THE MODEL. THIS OFFICE ACCEPTS NO RESPONSIBILITY FOR THE PROCUREMENT OF SUBSTITUTE FF&E AND EQUIPMENT WHICH HAS NOT BEEN REVIEWED AND VALIDATED AGAINST THE ORIGINAL DESIGN PROVISIONS.

SERVICE POINTS DISCLAIMER
THE SERVICE POINTS IDENTIFIED ON THESE DRAWINGS HAVE BEEN OVERLAYED FROM THE BUILDING SERVICES ENGINEERING MODEL AND ARE PROVIDED FOR INFORMATION AND SET-OUT PURPOSES ONLY. WE HAVE BEEN ADVISED BY THE SERVICES ENGINEERS THAT THE POINTS REPRESENTED ON THESE DRAWINGS ARE CORRECT AT THE TIME OF PUBLICATION. THIS OFFICE DOES NOT WARRANT THE ACCURACY OF THIS DATA. REFER TO THE BUILDING SERVICES ENGINEERING DOCUMENTATION FOR THE INSTALLATION OF THE SERVICES POINTS, AND THE INTERFACE BETWEEN THE SERVICES POINTS AND THE RESPECTIVE ENGINEERING SYSTEMS.

ISSUED FOR INFORMATION

ARCHITECTS

STH

BATESSMART.

ABN: 21 134 476 005
LEVEL 4, 80 YORK STREET
SYDNEY NSW 2000, AUSTRALIA
PH: (02) 8299 4600 FAX: (02) 9885 2455

M12147
43 BRISBANE STREET,
SURRY HILLS, NSW 2010
ABN: 66 094 740 966 PH: (02) 8354 5100
E: syd@batesmart.com.au

THIS ARCHITECTURAL DESIGN IS THE COPYRIGHT OF SILVER THOMAS HANLEY AND BATES SMART AND SHALL NOT BE REPRODUCED WITHOUT THEIR WRITTEN PERMISSION

PROJECT MANAGER

TSA

MANAGEMENT

CLIENT

NSW GOVERNMENT

Health Infrastructure

Health Northern NSW Local Health District

PROJECT

TWEED VALLEY HOSPITAL

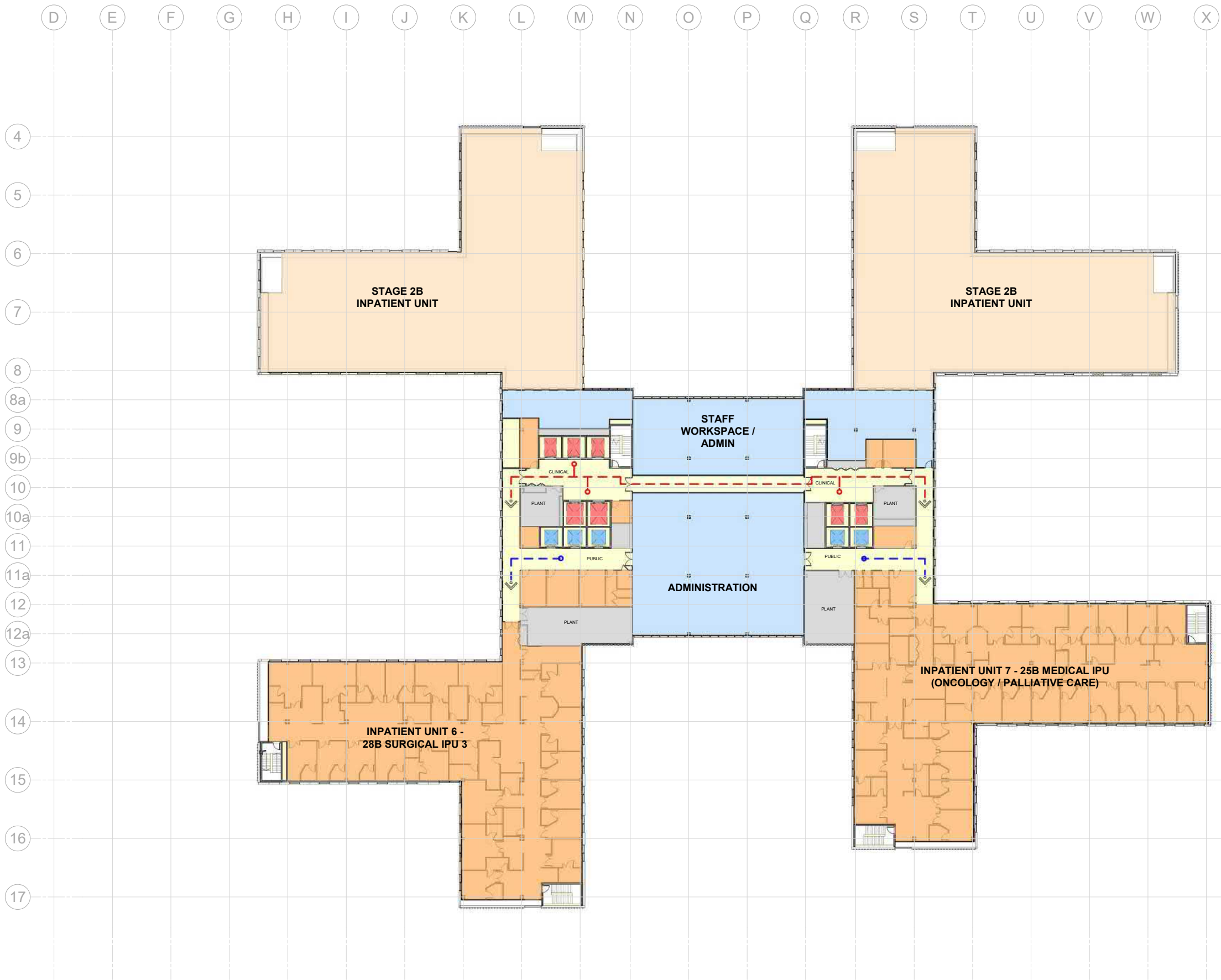
DRAWING TITLE

GENERAL ARRANGEMENT PLAN LEVEL 04

SCALE	DATE	DRAWN BY	CHECKED
1 : 300@A1	06/09/19	RN	AB

PROJECT No	DRAWING No	REVISION
10363	STH-AR-SKE-MHB-20004001	1





KEY PLAN			
REV	DESCRIPTION	DRN	DATE
1	ISSUED FOR SSD 2	RN	06/09/19

COPYRIGHT
ALL RIGHTS RESERVED. THIS WORK IS COPYRIGHT AND CANNOT BE REPRODUCED OR COPIED IN ANY FORM OR BY ANY MEANS (GRAPHIC, ELECTRONIC OR MECHANICAL, INCLUDING PHOTOCOPIING) WITHOUT THE WRITTEN PERMISSION OF THE PRINCIPAL. UNDER THE TERMS OF THE CONTRACT, ANY LICENCE, EXPRESS OR IMPLIED, TO USE THE DOCUMENT FOR ANY PURPOSE WHATSOEVER IS RESTRICTED TO THE TERMS OF THE AGREEMENT OR IMPLIED AGREEMENT WITH THE PRINCIPAL UNDER THE TERMS OF THE CONTRACT.

DIMENSIONS
USE FIGURED DIMENSIONS. DO NOT SCALE. CONTRACTORS MUST VERIFY ALL DIMENSIONS ON THE SITE BEFORE COMMENCING ANY WORK OR MAKING ANY SHOP DRAWING WHICH MUST BE SUBMITTED AND REVIEWED BEFORE MANUFACTURE.

FIXTURES, FITTINGS & EQUIPMENT SPECIFICATIONS
SUBSTITUTE FF&E EQUIPMENT SPECIFICATIONS
THE FIT-OUT DESIGN AND DOCUMENTATION HAS BEEN COMPLETED ON THE BASIS OF FF&E AND EQUIPMENT ADVISED TO THIS OFFICE AT THE TIME OF BRIEFING THE DESIGN. THE DESIGN PROVISIONS FOR FF&E AND EQUIPMENT INCORPORATES SPATIAL ALLOCATIONS, SERVING, LOADING AND ACCESS CLEARANCES AND WHERE APPROPRIATE SERVICES REQUIREMENTS, HAVING DUE REGARD FOR SURROUNDING FIXTURES AND FITTINGS. IT SHOULD BE NOTED THAT SUBSTITUTE FF&E OR EQUIPMENT WITH ALTERNATE SPECIFICATIONS SHOULD NOT BE PROCURED PRIOR TO VALIDATING THOSE SPECIFICATIONS AGAINST THE ITEM CONTROL, SCHEDULE AND DESIGN PROVISIONS IN THE MODEL. THIS OFFICE ACCEPTS NO RESPONSIBILITY FOR THE PROCUREMENT OF SUBSTITUTE FF&E AND EQUIPMENT WHICH HAS NOT BEEN REVIEWED AND VALIDATED AGAINST THE ORIGINAL DESIGN PROVISIONS.

SERVICE POINTS DISCLAIMER
THE SERVICE POINTS IDENTIFIED ON THESE DRAWINGS HAVE BEEN OVERLAYED FROM THE BUILDING SERVICES ENGINEERING MODEL, AND ARE PROVIDED FOR INFORMATION AND SET-OUT PURPOSES ONLY. WE HAVE BEEN ADVISED BY THE SERVICES ENGINEERS THAT THE POINTS REPRESENTED ON THESE DRAWINGS ARE CORRECT AT THE TIME OF PUBLICATION. THIS OFFICE DOES NOT WARRANT THE ACCURACY OF THIS DATA. REFER TO THE BUILDING SERVICES ENGINEERING DOCUMENTATION FOR THE INSTALLATION OF THE SERVICES POINTS, AND THE INTERFACE BETWEEN THE SERVICES POINTS AND THE RESPECTIVE ENGINEERING SYSTEMS.

ISSUED FOR INFORMATION

ARCHITECTS

STH BATESSMART.

M12147
ABN: 21 134 476 005
LEVEL 4, 80 YORK STREET
SYDNEY NSW 2000, AUSTRALIA
PH: (02) 8299 4600 FAX: (02) 9885 2455

43 BRISBANE STREET,
SURRY HILLS, NSW 2010
ABN: 66 094 740 966 PH: (02) 8354 5100
E: syd@batesmart.com.au

THIS ARCHITECTURAL DESIGN IS THE COPYRIGHT OF SILVER THOMAS HANLEY AND BATES SMART AND SHALL NOT BE REPRODUCED WITHOUT THEIR WRITTEN PERMISSION

PROJECT MANAGER

TSA
MANAGEMENT

CLIENT

NSW GOVERNMENT
Health Infrastructure
Health Northern NSW Local Health District

TWEED VALLEY HOSPITAL

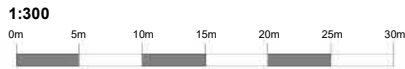
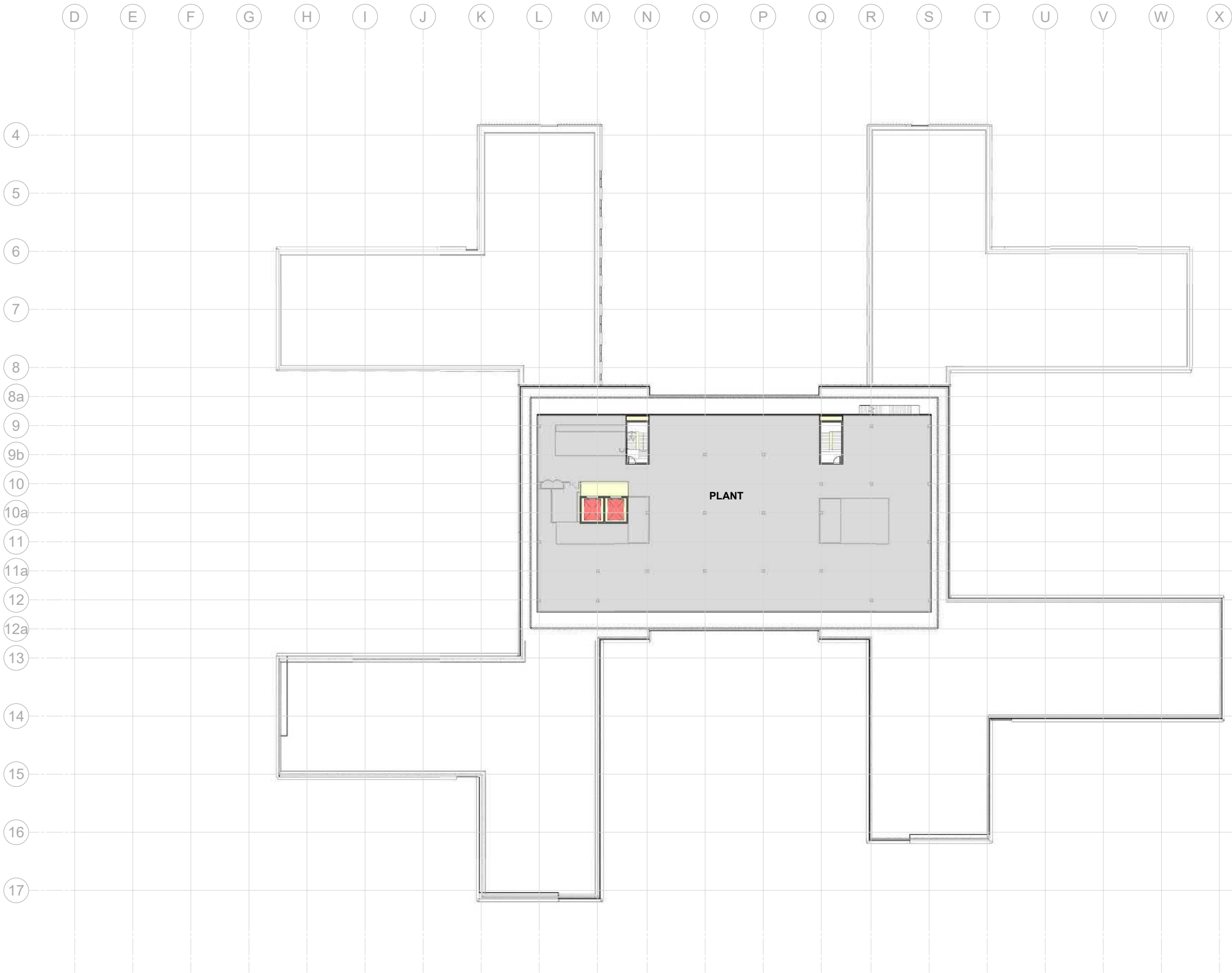
DRAWING TITLE

GENERAL ARRANGEMENT PLAN
LEVEL 05

SCALE DATE DRAWN BY CHECKED
1:300@A1 06/09/19 RN AB

PROJECT No DRAWING No REVISION
10363 STH-AR-SKE-MHB-20005001 1





KEY PLAN

REV	DESCRIPTION	DRN	DATE
1	ISSUED FOR SSD 2	RN	06/09/19

COPYRIGHT
ALL RIGHTS RESERVED. THIS WORK IS COPYRIGHT AND CANNOT BE REPRODUCED OR COPIED IN ANY FORM OR BY ANY MEANS (GRAPHIC, ELECTRONIC OR MECHANICAL, INCLUDING PHOTOCOPIING) WITHOUT THE WRITTEN PERMISSION OF THE PRINCIPAL UNDER THE TERMS OF THE CONTRACT. ANY LICENCE, EXPRESS OR IMPLIED, TO USE THE DOCUMENT FOR ANY PURPOSE WHATSOEVER IS RESTRICTED TO THE TERMS OF THE AGREEMENT OR IMPLIED AGREEMENT WITH THE PRINCIPAL UNDER THE TERMS OF THE CONTRACT.

DIMENSIONS
USE FIGURED DIMENSIONS. DO NOT SCALE. CONTRACTORS MUST VERIFY ALL DIMENSIONS ON THE SITE BEFORE COMMENCING ANY WORK OR MAKING ANY SHOP DRAWING WHICH MUST BE SUBMITTED AND REVIEWED BEFORE MANUFACTURE.

FIXTURES, FITTINGS & EQUIPMENT SPECIFICATIONS
SUBSTITUTE FF&E EQUIPMENT SPECIFICATIONS
THE FIT-OUT DESIGN AND DOCUMENTATION HAS BEEN COMPLETED ON THE BASIS OF FF&E AND EQUIPMENT ADVISED TO THIS OFFICE AT THE TIME OF BRIEFING THE DESIGN. THE DESIGN PROVISIONS FOR FF&E AND EQUIPMENT INCORPORATES SPATIAL ALLOCATIONS, SERVICING, LOADING AND ACCESS CLEARANCES AND WHERE APPROPRIATE SERVICES REQUIREMENTS, HAVING DUE REGARD FOR SURROUNDING FIXTURES AND FITTINGS. IT SHOULD BE NOTED THAT SUBSTITUTE FF&E OR EQUIPMENT WITH ALTERNATE SPECIFICATIONS SHOULD NOT BE PROCURED PRIOR TO VALIDATING THESE SPECIFICATIONS AGAINST THE ITEM CONTROL, SCHEDULE AND DESIGN PROVISIONS IN THE MODEL. THIS OFFICE ACCEPTS NO RESPONSIBILITY FOR THE PROCUREMENT OF SUBSTITUTE FF&E AND EQUIPMENT WHICH HAS NOT BEEN REVIEWED AND VALIDATED AGAINST THE ORIGINAL DESIGN PROVISIONS.

SERVICE POINTS DISCLAIMER
THE SERVICE POINTS IDENTIFIED ON THESE DRAWINGS HAVE BEEN OVERLAYED FROM THE BUILDING SERVICES ENGINEERING MODEL, AND ARE PROVIDED FOR INFORMATION AND SET-OUT PURPOSES ONLY. WE HAVE BEEN ADVISED BY THE SERVICES ENGINEERS THAT THE POINTS REPRESENTED ON THESE DRAWINGS ARE CORRECT AT THE TIME OF PUBLICATION. THIS OFFICE DOES NOT WARRANT THE ACCURACY OF THIS DATA. REFER TO THE BUILDING SERVICES ENGINEERING DOCUMENTATION FOR THE INSTALLATION OF THE SERVICES POINTS, AND THE INTERFACE BETWEEN THE SERVICES POINTS AND THE RESPECTIVE ENGINEERING SYSTEMS.

ISSUED FOR INFORMATION

ARCHITECTS

BATESSMART.

M12147
ABN: 21 134 476 005
LEVEL 4, 80 YORK STREET
SYDNEY NSW 2000, AUSTRALIA
PH: (02) 8299 4600 FAX: (02) 9885 2455

**43 BRISBANE STREET,
SURRY HILLS, NSW 2010**
ABN: 66 094 740 966 PH: (02) 8354 5100
E: tyd@batesmart.com.au

THIS ARCHITECTURAL DESIGN IS THE COPYRIGHT OF SILVER THOMAS HANLEY AND BATES SMART AND SHALL NOT BE REPRODUCED WITHOUT THEIR WRITTEN PERMISSION

PROJECT MANAGER

CLIENT

Health
Infrastructure

Health
Northern NSW
Local Health District

PROJECT

TWEED VALLEY HOSPITAL

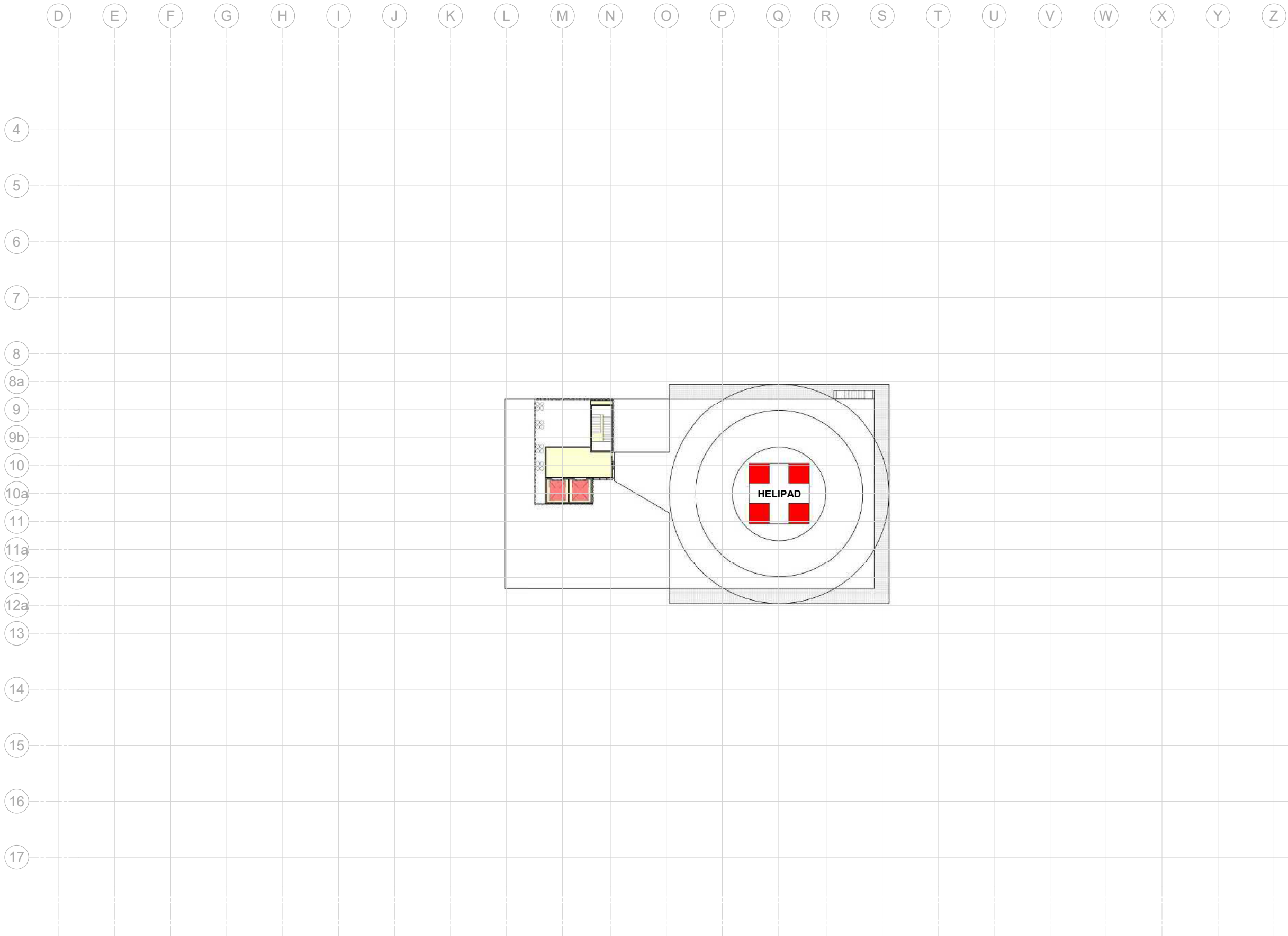
DRAWING TITLE

**GENERAL ARRANGEMENT PLAN
LEVEL 06**

SCALE	DATE	DRAWN BY	CHECKED
1 : 300@A1	06/09/19	RN	AB

PROJECT No	DRAWING No	REVISION
10363	STH-AR-SKE-MHB-2006001	1

BIM 300 Tweed Valley Hospital V4 BUILDING_R18.dwg



KEY PLAN

REV	DESCRIPTION	DRN	DATE
1	ISSUED FOR SSD 2	RN	06/09/19

COPYRIGHT

ALL RIGHTS RESERVED. THIS WORK IS COPYRIGHT AND CANNOT BE REPRODUCED OR COPIED IN ANY FORM OR BY ANY MEANS (GRAPHIC, ELECTRONIC OR MECHANICAL, INCLUDING PHOTOCOPIING) WITHOUT THE WRITTEN PERMISSION OF THE PRINCIPAL UNDER THE TERMS OF THE CONTRACT. ANY LICENCE, EXPRESS OR IMPLIED, TO USE THE DOCUMENT FOR ANY PURPOSE WHATSOEVER IS RESTRICTED TO THE TERMS OF THE AGREEMENT OR IMPLIED AGREEMENT WITH THE PRINCIPAL UNDER THE TERMS OF THE CONTRACT.

DIMENSIONS

USE FIGURED DIMENSIONS. DO NOT SCALE. CONTRACTORS MUST VERIFY ALL DIMENSIONS ON THE SITE BEFORE COMMENCING ANY WORK OR MAKING ANY SHOP DRAWING WHICH MUST BE SUBMITTED AND REVIEWED BEFORE MANUFACTURE.

FIXTURES, FITTINGS & EQUIPMENT SPECIFICATIONS

SUBSTITUTE FF&E EQUIPMENT SPECIFICATIONS
THE FIT-OUT DESIGN AND DOCUMENTATION HAS BEEN COMPLETED ON THE BASIS OF FF&E AND EQUIPMENT ADVISED TO THIS OFFICE AT THE TIME OF BRIEFING THE DESIGN. THE DESIGN PROVISIONS FOR FF&E AND EQUIPMENT INCORPORATES SPATIAL ALLOCATIONS, SERVICING, LOADING AND ACCESS CLEARANCES AND WHERE APPROPRIATE SERVICES REQUIREMENTS, HAVING DUE REGARD FOR SURROUNDING FIXTURES AND FITTINGS. IT SHOULD BE NOTED THAT SUBSTITUTE FF&E OR EQUIPMENT WITH ALTERNATE SPECIFICATIONS SHOULD NOT BE PROCURED PRIOR TO VALIDATING THESE SPECIFICATIONS AGAINST THE ITEM CONTROL, SCHEDULE AND DESIGN PROVISIONS IN THE MODEL. THIS OFFICE ACCEPTS NO RESPONSIBILITY FOR THE PROCUREMENT OF SUBSTITUTE FF&E AND EQUIPMENT WHICH HAS NOT BEEN REVIEWED AND VALIDATED AGAINST THE ORIGINAL DESIGN PROVISIONS.

SERVICE POINTS DISCLAIMER

THE SERVICE POINTS IDENTIFIED ON THESE DRAWINGS HAVE BEEN OVERLAYED FROM THE BUILDING SERVICES ENGINEERING MODEL, AND ARE PROVIDED FOR INFORMATION AND SET-OUT PURPOSES ONLY. WE HAVE BEEN ADVISED BY THE SERVICES ENGINEERS THAT THE POINTS REPRESENTED ON THESE DRAWINGS ARE CORRECT AT THE TIME OF PUBLICATION. THIS OFFICE DOES NOT WARRANT THE ACCURACY OF THIS DATA. REFER TO THE BUILDING SERVICES ENGINEERING DOCUMENTATION FOR THE INSTALLATION OF THE SERVICES POINTS, AND THE INTERFACE BETWEEN THE SERVICES POINTS AND THE RESPECTIVE ENGINEERING SYSTEMS.

ISSUED FOR INFORMATION

ARCHITECTS

BATESSMART.

ABN: 21 134 476 005
LEVEL 4, 80 YORK STREET
SYDNEY NSW 2000, AUSTRALIA
PH: (02) 8299 4600 FAX: (02) 9885 2455

M12147
43 BRISBANE STREET,
SURRY HILLS NSW 2010
ABN: 66 094 740 966 PH: (02) 8354 5100
E: tyd@batesmart.com.au

THIS ARCHITECTURAL DESIGN IS THE COPYRIGHT OF SILVER THOMAS HANLEY AND BATES SMART AND SHALL NOT BE REPRODUCED WITHOUT THEIR WRITTEN PERMISSION

PROJECT MANAGER

TSA
MANAGEMENT

CLIENT

PROJECT

TWEED VALLEY HOSPITAL

DRAWING TITLE

**GENERAL ARRANGEMENT PLAN
LEVEL 07**

SCALE	DATE	DRAWN BY	CHECKED
1 : 300@A1	06/09/19	RN	AB

PROJECT No	DRAWING No	REVISION
10363	STH-AR-SKE-MHB-20007001	1

BIM 300 - Tweed Valley Hospital V4 - BUILDING - R10.rvt