

Contact Name: Mr Mathew Pringle  
Contact No: (02) 6540 1139  
Our Reference: OUT-13079/18



15 November 2018

Department of Planning and Environment  
GPO Box 39  
SYDNEY NSW 2001

Attention: Ellen Jones

Dear Sir/Madam,

**Preliminary Submission – Queensland to Hunter Gas Pipeline Modification 1 – MP 06\_0286  
MOD 1**

Thank you for the opportunity to comment on the application by Hunter Gas Pipeline Pty Ltd to modify its development consent for the Queensland to Hunter Gas Pipeline.

It is understood that the proposed modification seeks to extend the project lapse date for a further five (5) years.

Upper Hunter Shire Council has reviewed the Environmental Assessment accompanying the modification application and provides the following comments:

1. The approved route of the gas pipeline overlaps and/or intersects a proposed water pipeline from Scone to Murrurundi at a number of locations between Wingen and Murrurundi. Plans of the two pipeline routes are attached. It is requested that the proponent contact Council to discuss the implications of the overlapping routes.
2. It is understood that the pipeline will include off-take points at regional towns along the route to allow for local gas reticulation. Council would support the provision of off-take points to supply Murrurundi, Scone and Aberdeen.
3. Should the proposed modification be approved, it is recommended that a condition of consent be imposed requiring the proponent to enter into a Voluntary Planning Agreement (VPA) with Council. The requirement for a VPA is considered to be reasonable given that the proposed modification is seeking an extension to the lapse date of the consent.

Please note that this is a preliminary submission only. A final submission will be forwarded to the Department by 27 November 2018 following its endorsement by Council.

Should you have any questions, please contact Council's Director Environmental & Community Services, Mathew Pringle on 6540 1139.

Yours faithfully

Steve McDonald  
GENERAL MANAGER

Encl.

**All correspondence to:**

General Manager | Upper Hunter Shire Council | PO Box 208, Scone NSW 2337

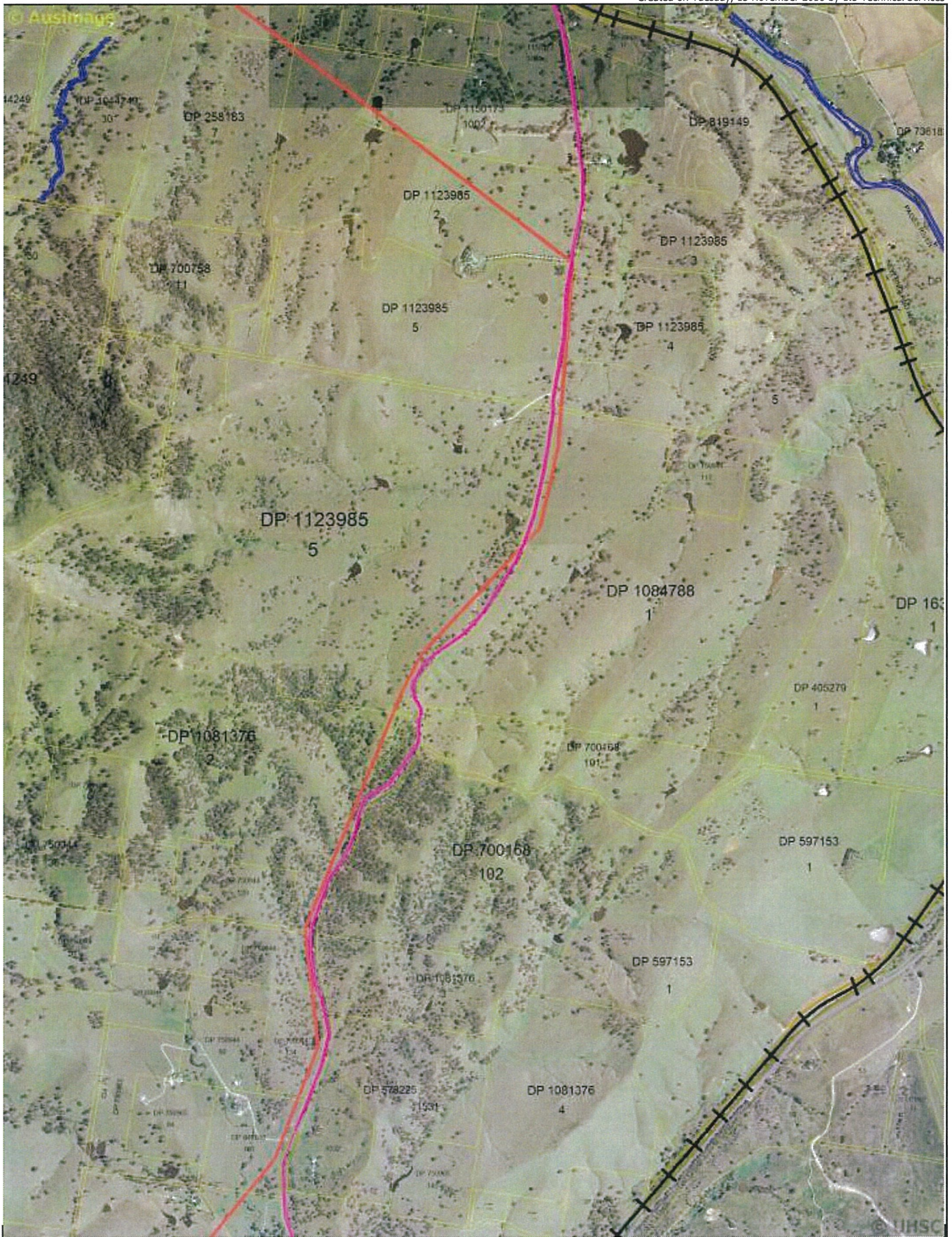
**Phone:** Scone Office 6540 1100 | Merriwa Office 6521 7000 | Murrurundi Office 6540 1350

**Email:** council@upperhunter.nsw.gov.au

**UPPERHUNTER.NSW.GOV.AU**







Upper Hunter Shire Council  
PO Box 208  
Scone NSW 2337  
Ph (02) 4540 1100  
Fax (02) 4540 1071  
Email [info@upperhunter.nsw.gov.au](mailto:info@upperhunter.nsw.gov.au)



#### Important Notice!

This map is not a precise survey document. Accurate locations can only be determined by a survey on the ground. This information has been prepared for Council's internal purposes and for no other purpose. No statement is made about the accuracy or suitability of the information for use for any purpose (whether the purpose has been notified to Council or not). While every care is taken to ensure the accuracy of this data, neither the Upper Hunter Shire Council nor the Department of Lands makes any representations or warranties about its accuracy, reliability, completeness or suitability for any particular purpose and disclaims all responsibility and all liability (including without limitation, liability in negligence) for all expenses, losses, damages (including indirect or consequential damage) and costs which you might incur as a result of the data being inaccurate or incomplete in any way and for any reason.  
© The State of New South Wales (Department of Lands) 2008.  
© Upper Hunter Shire Council 2008.



Horizontal coordinates are based on the Geoid Datum Australia (GDA) for the centre of the Upper Hunter Local Government Area. Magnetic North is correct for 2001, moving easterly by 0.04° in about five years.

#### Important

This map was produced on the GEOCENTRIC DATUM OF AUSTRALIA 1994 (GDA94), which has superseded the Australian Geodetic Datum of 1984 (AGD66/84). Heights are referenced to the Australia Height Datum (AHD) heights. For most practical purposes GDA94 coordinates and satellite derived (GPS) coordinates based on the World Geodetic Datum 1984 (WGS84) are the same.

Photography:

Contour

Interval:

Projection: MGA54 Zone 55

Cost:

Date: Tuesday, 13 November 2018

Drawn By: 1.3 Technical Services

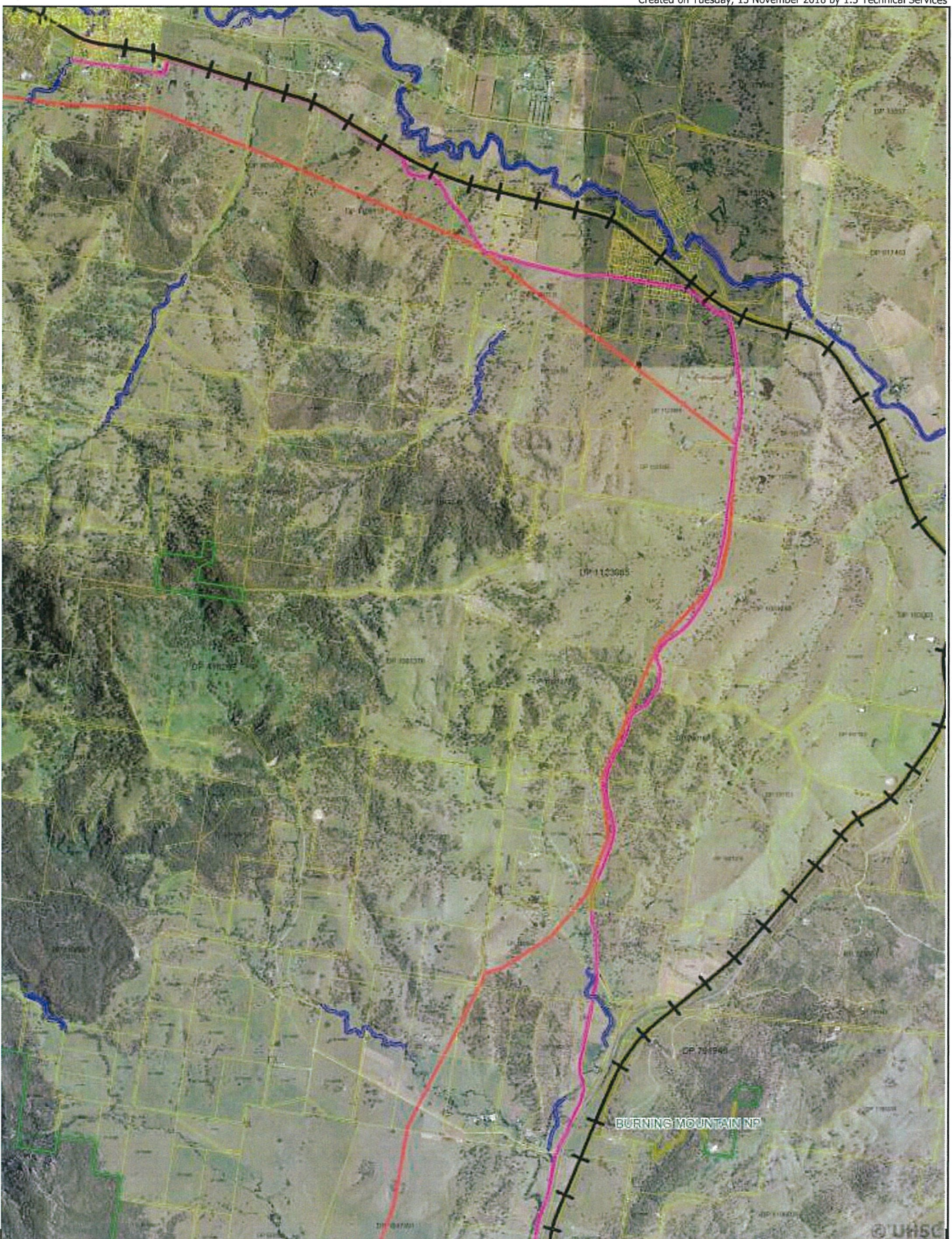
Map Zoom: 4750 m

## Scone to Murrurundi Pipeline

Hunter Gas Pipeline

Map Scale: 1:25,000 at A4  
Map Zoom: 4750 m





Upper Hunter Shire Council  
 771 Bx 208  
 SCONE NSW 2337  
 Ph: (02) 6540 1100  
 Fax: (02) 6540 2071  
 Email: council@upperhunter.nsw.gov.au



#### Important Notice!

This map is not a precise survey document. Accurate locations can only be determined by a survey on the ground. This information has been prepared for Council's internal purposes and for no other purpose. No statement is made about the accuracy or suitability of the information for use for any purpose (whether the purpose has been notified to Council or not). While every care is taken to ensure the accuracy of this data, neither the Upper Hunter Shire Council nor the Department of Lands makes any representations or warranties about its accuracy, reliability, completeness or suitability for any particular purpose and disclaims all responsibility and all liability (including without limitation, liability in negligence) for all expenses, losses, damages (including indirect or consequential damage) and costs which you might incur as a result of the data being inaccurate or incomplete in any way and for any reason.  
 © The State of New South Wales (Department of Lands) 2008.  
 © Upper Hunter Shire Council 2008.



For the purpose of this map, the GDA datum is used for the centre of the Upper Hunter Local Government Area. Magnetic North is correct for 2002, moving easterly by 0.04° in about five years.

#### Important

This map was produced on the GEOCENTRIC DATUM OF AUSTRALIA 1994 (GDA94), which has superseded the Australian Geodetic Datum of 1984 (AGD66/84). Heights are referenced to the Australia Height Datum (AHD) heights. For most practical purposes GDA94 coordinates and satellite derived (GPS) coordinates based on the World Geodetic Datum 1984 (WGS84) are the same.

#### Photography:

Contour

Interval:

Projection: MGA94 Zone 55

Cost:

Date: Tuesday, 13 November 2018

Drawn By: 1.3 Technical Services

Map Zoom: 9500 m

## Scone to Murrurundi Pipeline

### Hunter Gas Pipeline

Map Scale: 1:50,000 at A4  
 Map Zoom: 9500 m



