

HORSLEY PARK BRICKWORKS PLANT 2 UPGRADE

780 Wallgrove Road Horsley Park NSW 2175

Landscape Documentation for Response to Submission

Additional Planting to Ferrers Road

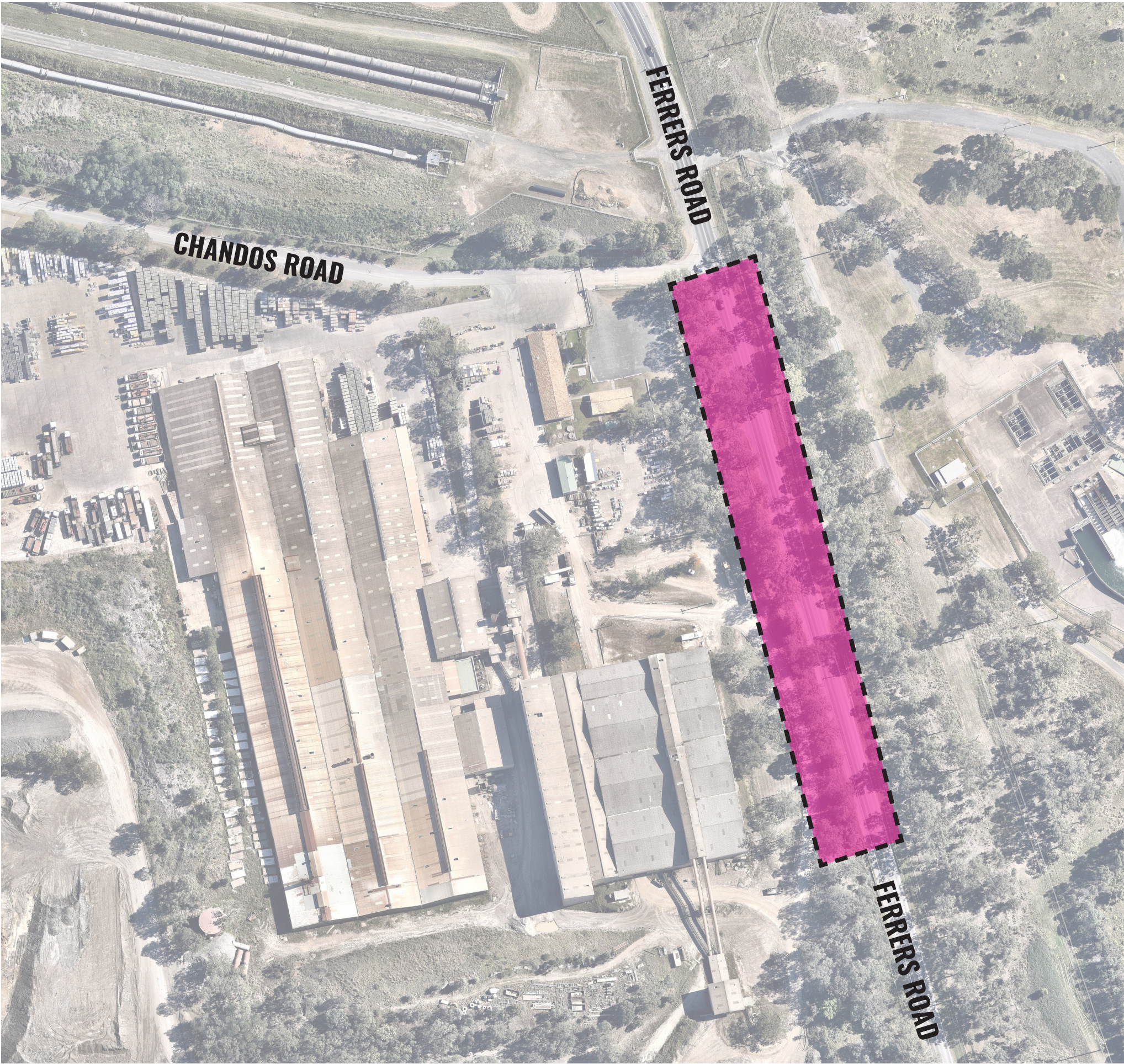


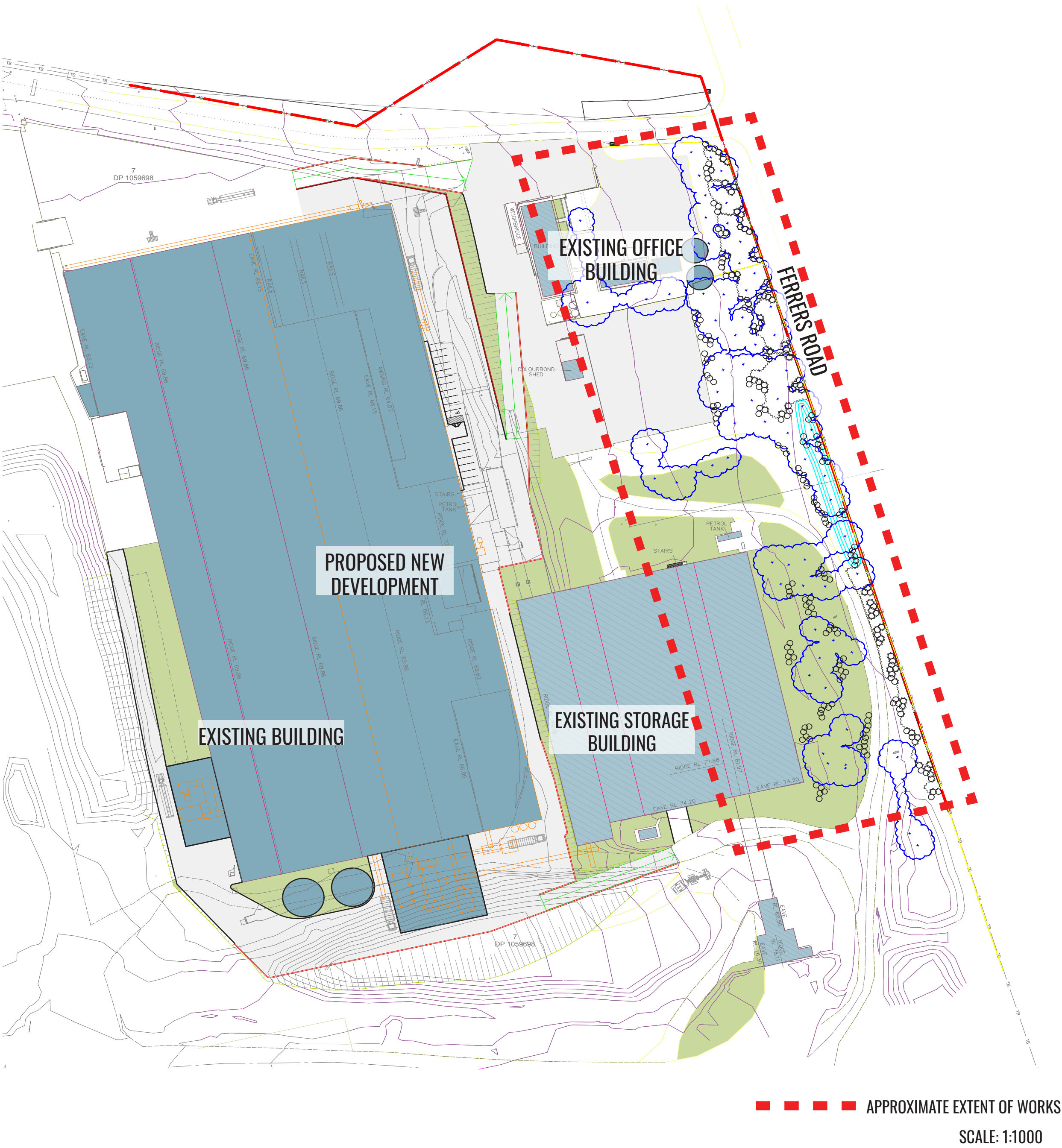
IMAGE TAKEN FROM NEARMAP 2019

Drawing Register

Dwg No.	Drawing Name
LDA-00	COVER SHEET & PLANT SCHEDULE
LDA-01	PROPOSED LANDSCAPE PLANTING PLAN
LDA-02	SPECIFICATIONS & DETAILS

PLANT SCHEDULE

CODE	BOTANICAL NAME	COMMON NAME	MATURE HEIGHT	SIZE	PLANTING DENSITY	QTY*
Shrubs						
ACA par	<i>Acacia parramattensis</i>	<i>Parramatta Wattle</i>	6m	Tubestock	2000mm ctrs	65
BUR spi	<i>Bursaria spinosa subsp. spinosa</i>	<i>Blackthorn</i>	3m	Tubestock	1500mm ctrs	103
IND aus	<i>Indigofera australis</i>	<i>Australian Indigo</i>	2.5m	Tucestock	750mm ctrs	87
Groundcovers						
DIA lon	<i>Dianella longifolia</i>	<i>Blueberry Lilly</i>	0.8m	Tubestock	3/m2	1070
LOM fil	<i>Lomandra filiformis sub. Filiformis</i>	<i>Wattle Mat rush</i>	0.5m	Tubestock	3/m2	1221
LOM mul	<i>Lomandra multiflora</i>	<i>Mat-rush</i>	0.8m	Tubestock	3/m2	1329



Drawing Title:
COVER SHEET&PLANT SCHEDULE
DWG No:

LDA-00

GEOSCAPHES

LANDSCAPE ARCHITECTS

Suite 215, 284 Victoria Av, Chatswood NSW 2067 Ph. (02) 9411 1485
www.geoscapes.com.au
ABN 84 620 205 781 ACN 620 205 781

Architects:

SBA

ARCHITECTS

Client:

australbricks®

Scale:		Date:	Job Number:	North:	Revision					FOR RESPONSE TO SUBMISSION	
1:1000 @ A1	1:2000 @ A3	18.12.19	191126		Rev	Date	Description	Drawn	Checked		
Project:		Horsley Park Brickworks Plant 2 Upgrade 780 Wallgrove Road, Horsley Park, NSW 2175			A	18.12.19	FOR RTS	SW	BG		

TYPICAL LANDSCAPE SPECIFICATIONS

General

Maintenance shall mean the care and maintenance of the landscape works by accepted horticultural practice as rectifying any defects that become apparent in the landscape works under normal use. The landscape contractor shall attend the site on a **weekly basis** to maintain the landscape works commencing from practical completion. Standard maintenance period is **13 weeks**.

Standards

Soils to be in accordance with AS4419, mulching composts and conditioners to be in accordance with AS4454. Soils should conform to best practice specifications as listed in the Landscape Soils Handbook (Simon Leake & Elke Haeger 2017).

Rubbish Removal

The Landscape Contractor shall undertake rubbish removal from the site on a **weekly basis** to ensure the site remains in tidy condition.

Weed Eradication

Weed growth that may occur in grassed, planted or mulched areas is to be removed using environmentally acceptable methods i.e. non-residual glyphosate herbicide (e.g. 'Roundup', applied in accordance with the manufacturer's direction.

Mulched Surfaces

All planter beds and garden areas shall have a minimum depth of 75mm organic mulch. All mulch is to be free of deleterious matter such as soil, weeds, sticks and should conform to AS 4454. Mulched surfaces are to be kept clean and tidy and free of any deleterious material and foreign matter. Reinstate depths to a uniform level of 75mm with mulch as specified, mulch to be free of any wood material impregnated with CCA or similar toxic treatment. Top up mulch levels prior to handover to client & estate management.

Watering

Implement an appropriate hand watering regime in areas not irrigated in association with current watering programme to maintain plant health and vigour. The program shall reflect seasonal conditions and plant species.
Frequency: Weekly or as required.

Soil

Australian native garden beds to have soil installed consisting of 50% existing site topsoil and 50% new topsoil equal or equivalent to 'Native Low 'P' Mix' as supplied by Australian Native Landscapes. Soil to conform to AS4419 refer to typical detail.

Pest and Disease Control

The Landscape Contractor shall spray for pests and disease infestations when the pest and fungal attack has been positively identified and when their populations have increased to a point that will become detrimental to plant growth. Apply all pesticides to manufacturer's directions.
Frequency: weekly inspection

Fertilising

Generally check for signs of nutrient deficiencies (yellowing of leaves, failure to thrive), and adapt fertiliser regime to suit. Fertiliser should be applied at the beginning and the end of the (summer) growing season.

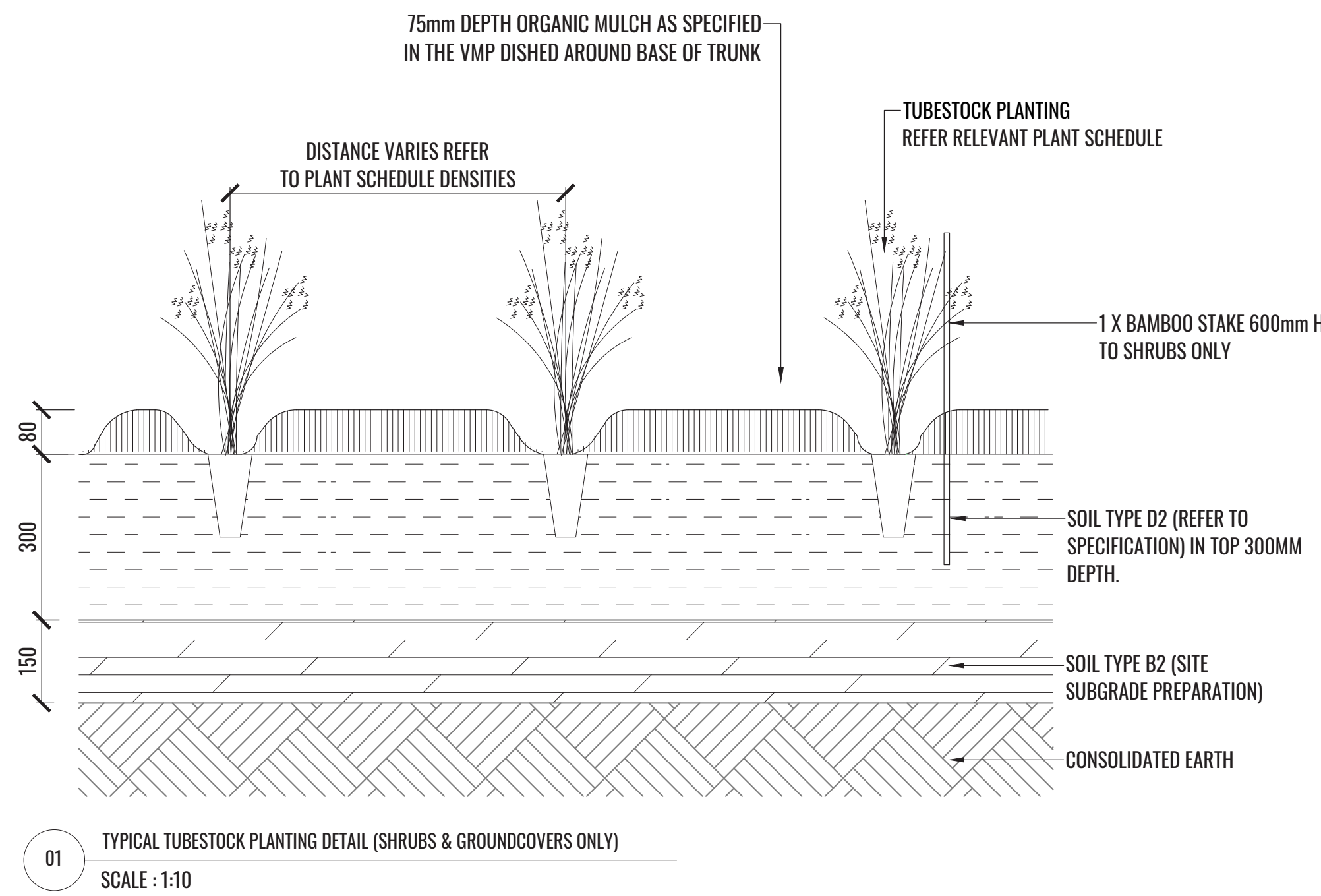
Plant Replacement

Shrubs and groundcovers shall show signs of healthy vigorous growth and be free from disease and not exhibit signs of stress prior to handover to the client. Any shrubs or groundcovers that die or fail to thrive, or are damaged or stolen will be replaced. Replacement material shall have the maintenance period extended in accordance with the landscape contract conditions. Plant material shall be equal to the minimum requirements of species specified and approved material delivered to site. Should the condition decline from the approved sample the Superintendent reserves the right to reject the Shrubs/ groundcovers.
Frequency: as required.

Stakes

Bamboo stakes to all shrub planting to help with establishment and identification.

TYPICAL LANDSCAPE DETAILS



Drawing Title:
SPECIFICATION & DETAILS
DWG No:

LDA-02

GEOSCAPES

LANDSCAPE ARCHITECTS

Suite 215, 284 Victoria Av, Chatswood NSW 2067 Ph. (02) 9411 1485
www.geoscapes.com.au
ABN 84 620 205 781 ACN 620 205 781

Architects:



Client:



Scale:	Date:	Job Number:	North:	Revision					FOR RESPONSE TO SUBMISSION	
				Rev	Date	Description	Drawn	Checked		
AS SHOWN	18.12.19	191126	N/A	A	18.12.19	FOR RTS	SW	BG		
Project:	Horsley Park Brickworks Plant 2 Upgrade									
						780 Wallgrove Road, Horsley Park, NSW 2175				