

Principal
SCHOOL INFRASTRUCTURE NSW
Level 7/259 George St, Sydney NSW 2000

Client
RICHARD CROOKES CONSTRUCTIONS
Level 3/4 Broadcast Way, Artarmon NSW 2064
PH: (02) 9902 4700

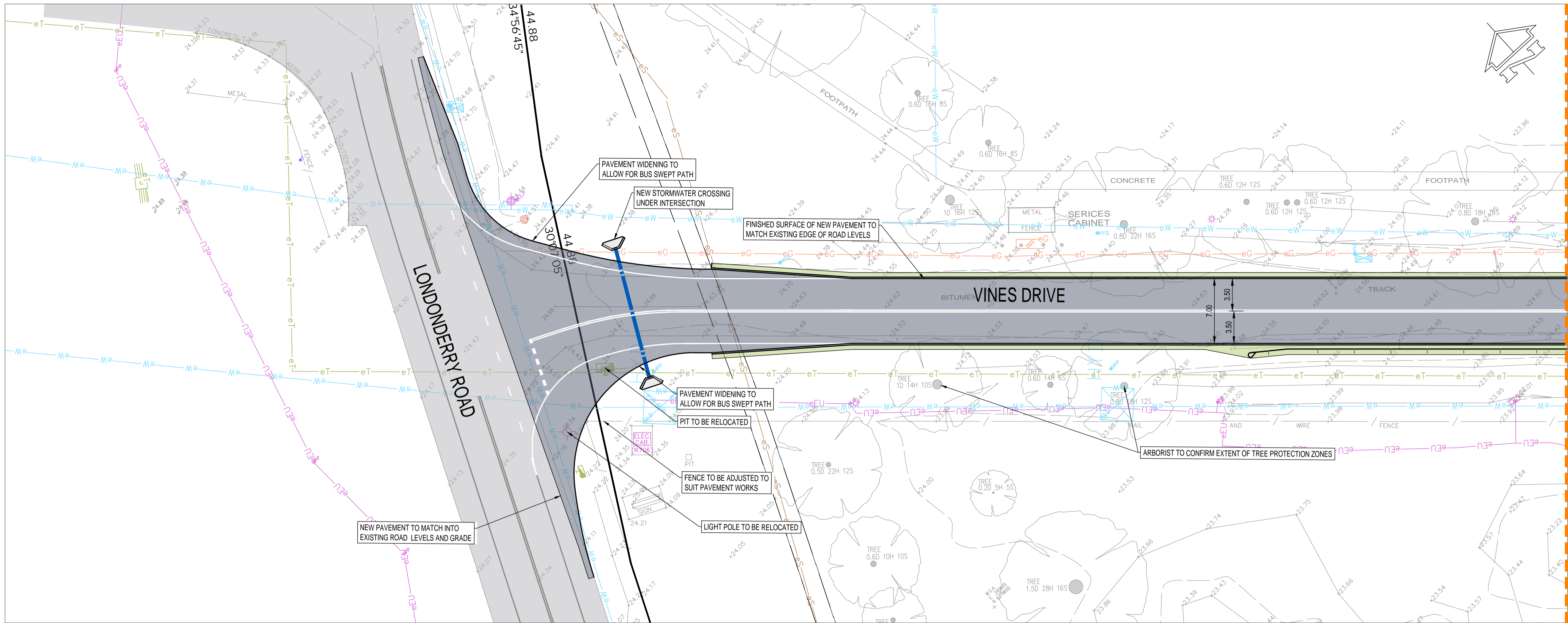
**Structural
Civil
Traffic
Façade**

HAWKESBURY CENTRE OF EXCELLENCE - VINES DRIVE WIDENING

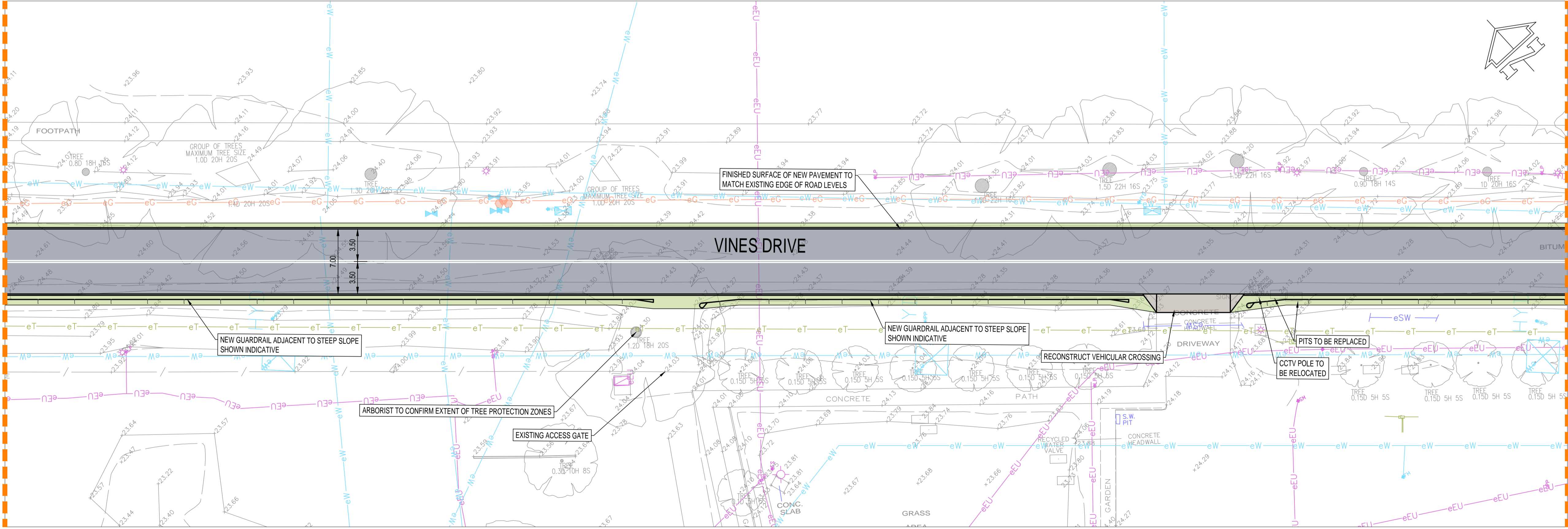
GENERAL ARRANGEMENT OVERVIEW PLAN

Job No
211091

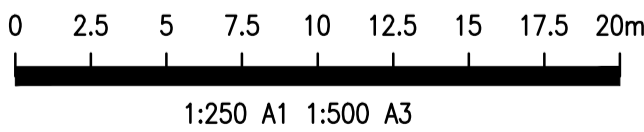
C



FOR CONTINUATION REFER BELOW



FOR CONTINUATION REFER NEXT SHEET



PRELIMINARY
NOT TO BE USED
FOR CONSTRUCTION

Filename: C31.dwg - User: j.dunham - Plot File Created: Oct 28, 2021 - 9:30am

A1 0 1 2 3 4 5 6 7 8 9 10

Rev	Description	Eng	Draft	Date	Rev	Description	Eng	Draft	Date
P4	PRELIMINARY	DM	DM	29.10.21					
P3	PRELIMINARY	DM	DM	21.10.21					
P2	PRELIMINARY	DM	DM	15.10.21					
P1	PRELIMINARY	DM	DM	08.10.21					

Principal
SCHOOL INFRASTRUCTURE NSW
Level 7/259 George St, Sydney NSW 2000

Client
RICHARD CROOKES CONSTRUCTIONS
Level 3/4 Broadcast Way, Artarmon NSW 2064
PH: (02) 9902 4700

Engineer
TTW **Structural Civil Traffic Façade**
612 9439 7288 | 48 Chandos Street St Leonards NSW 2065

Project
HAWKESBURY CENTRE OF EXCELLENCE - VINES DRIVE WIDENING

Sheet Subject
GENERAL ARRANGEMENT PLAN SHEET 1

Scale : A1
1:250

Drawn
JH

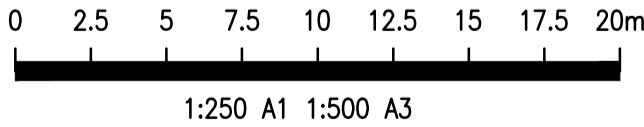
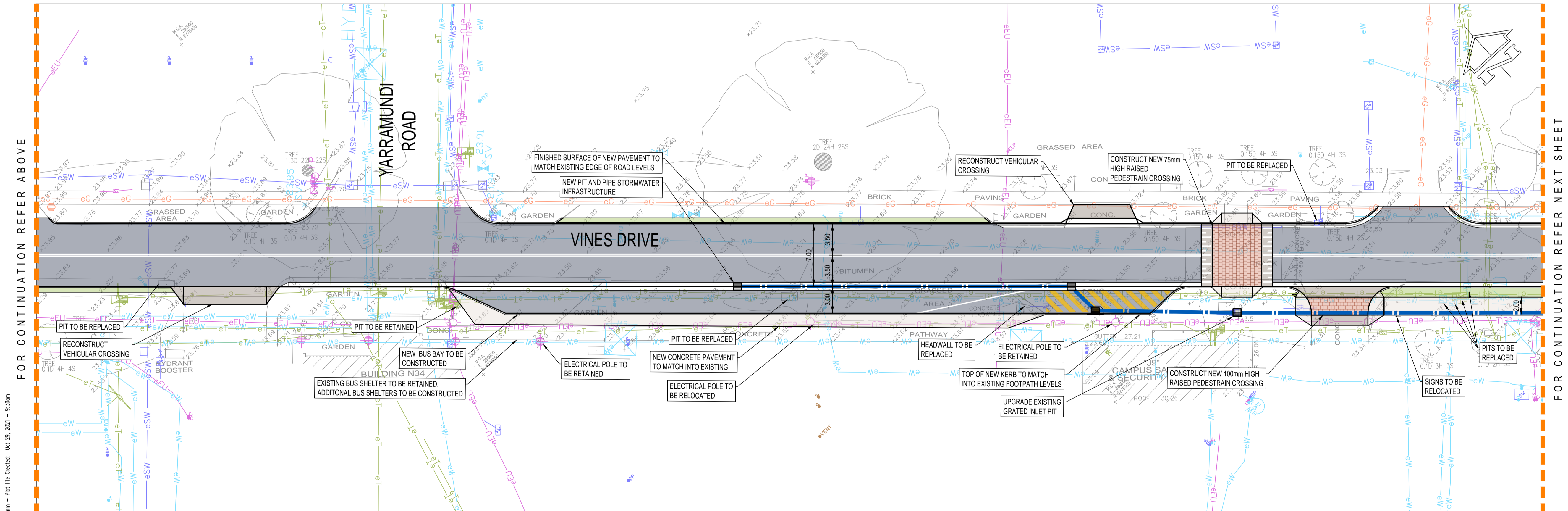
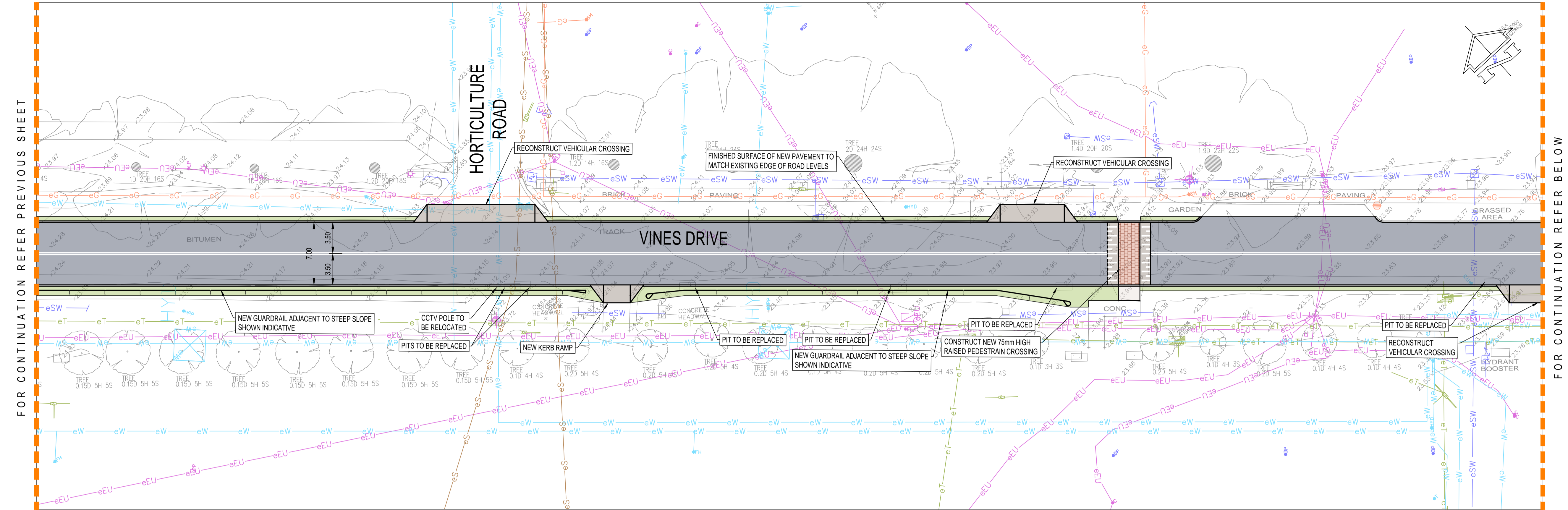
Authorised
SB

Job No
211091

Drawing No
C31

Revision
P4

Plot File Created: Oct 29, 2021 - 9:30am



PRELIMINARY
NOT TO BE USED
FOR CONSTRUCTION

A1 0 1 2 3 4 5 6 7 8 9 10

P4 PRELIMINARY DM DM 29.10.21				Principal SCHOOL INFRASTRUCTURE NSW Level 7/259 George St, Sydney NSW 2000				Engineer TTW Structural Civil Traffic Façade				Project HAWKESBURY CENTRE OF EXCELLENCE - VINES DRIVE WIDENING				Sheet Subject GENERAL ARRANGEMENT PLAN SHEET 2				Scale : A1 1:250				Drawn JH				Authorised SB			
P3 PRELIMINARY DM DM 21.10.21				Client RICHARD CROOKES CONSTRUCTIONS Level 3/4 Broadcast Way, Artarmon NSW 2064 PH: (02) 9902 4700				612 9439 7288 48 Chandos Street St Leonards NSW 2065												Job No 211091				Drawing No C32				Revision P4			
P2 PRELIMINARY DM DM 15.10.21																				Plot File Created: Oct 29, 2021 - 9:30am											
P1 PRELIMINARY DM DM 08.10.21																															
Rev Description Eng Draft Date				Rev Description Eng Draft Date				Rev Description Eng Draft Date				Rev Description Eng Draft Date																			

FOR CONTINUATION REFER PREVIOUS SHEET

FOR CONTINUATION REFER NEXT SHEET

Filename: C33.dwg - User: duncan - Plot File Created: Oct 29, 2021 - 9:30am

A1 0 1 2 3 4 5 6 7 8 9 10

Rev	Description	Eng	Draft	Date	Rev	Description	Eng	Draft	Date	Rev	Description	Eng	Draft	Date
P4	PRELIMINARY	DM	DM	29.10.21										
P3	PRELIMINARY	DM	DM	21.10.21										
P2	PRELIMINARY	DM	DM	15.10.21										
P1	PRELIMINARY	DM	DM	08.10.21										

Principal
SCHOOL INFRASTRUCTURE NSW
Level 7/259 George St, Sydney NSW 2000

Client
RICHARD CROOKES CONSTRUCTIONS
Level 3/4 Broadcast Way, Artarmon NSW 2064
PH: (02) 9902 4700

Engineer
TTW **Structural Civil Traffic Façade**
612 9439 7288 | 48 Chandos Street St Leonards NSW 2065

Project
HAWKESBURY CENTRE OF EXCELLENCE - VINES DRIVE WIDENING

Sheet Subject
GENERAL ARRANGEMENT PLAN SHEET 3

0 2.5 5 7.5 10 12.5 15 17.5 20m
1:250 A1 1:500 A3

PRELIMINARY
NOT TO BE USED
FOR CONSTRUCTION

Scale : A1
1:250

Drawn
JH

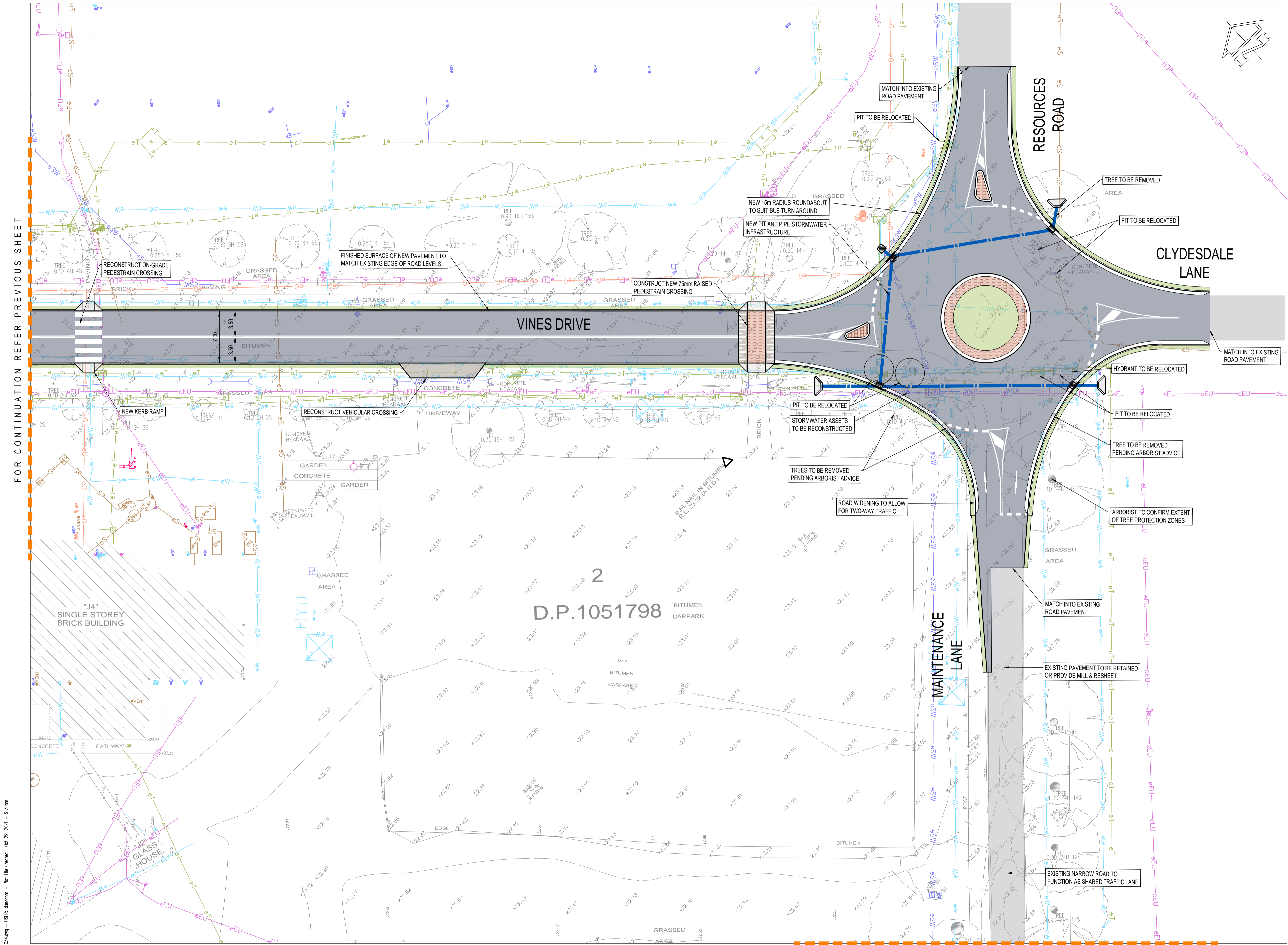
Authorised
SB

Job No
211091

Drawing No
C33

Revision
P4

Plot File Created: Oct 29, 2021 - 9:30am



T:\Projects\2021\2021_09_20_2021 - 9:30am
Filename: C:\4\4 - USER: duncan - Plot File Created: Oct 29, 2021 - 9:30am

Rev	Description	Eng	Draft	Date	Rev	Description	Eng	Draft	Date	Rev	Description	Eng	Draft	Date
P4	PRELIMINARY	DM	DM	29.10.21										
P3	PRELIMINARY	DM	DM	21.10.21										
P2	PRELIMINARY	DM	DM	15.10.21										
P1	PRELIMINARY	DM	DM	08.10.21										

Principal
SCHOOL INFRASTRUCTURE NSW
Level 7/259 George St, Sydney NSW 2000
Client
RICHARD CROOKES CONSTRUCTIONS
Level 3/4 Broadcast Way, Artarmon NSW 2064
PH: (02) 9902 4700

Engineer
TTW **Structural Civil Traffic Façade**
612 9439 7288 | 48 Chandos Street St Leonards NSW 2065

Project
HAWKESBURY CENTRE OF EXCELLENCE - VINES DRIVE WIDENING

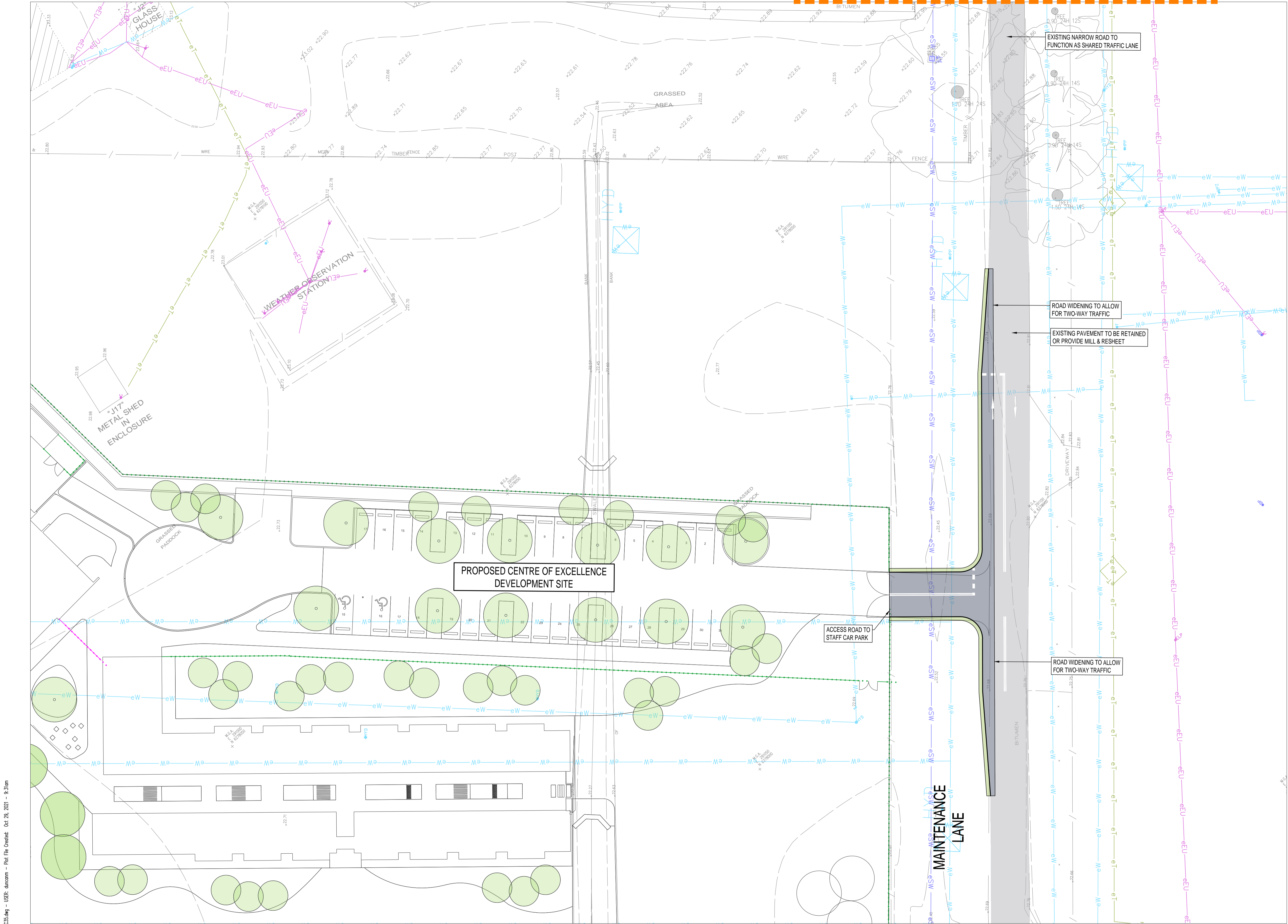
Sheet Subject
GENERAL ARRANGEMENT PLAN SHEET 4

0 2.5 5 7.5 10 12.5 15 17.5 20m
1:250 A1 1:500 A3

PRELIMINARY
NOT TO BE USED
FOR CONSTRUCTION

Scale : A1
1:250
Job No
211091
Plot File Created: Oct 29, 2021 - 9:30am
Drawn
JH
Drawing No
C34
Authorised
SB
Revision
P4

FOR CONTINUATION REFER PREVIOUS SHEET



Filename: C35.dwg - User: duncan - Plot File Created: Oct 29, 2021 - 9:31am

A1 0 1 2 3 4 5 6 7 8 9 10

Rev	Description	Eng	Draft	Date	Rev	Description	Eng	Draft	Date	Rev	Description	Eng	Draft	Date
P4	PRELIMINARY		DM	DM	29.10.21									
P3	PRELIMINARY		DM	DM	21.10.21									
P2	PRELIMINARY		DM	DM	15.10.21									
P1	PRELIMINARY		DM	DM	08.10.21									

Principal
SCHOOL INFRASTRUCTURE NSW
Level 7/259 George St, Sydney NSW 2000

Client
RICHARD CROOKES CONSTRUCTIONS
Level 3/4 Broadway Way, Artarmon NSW 2064
PH: (02) 9902 4700

Engineer
TTW **Structural Civil Traffic Façade**

612 9439 7288 | 48 Chandos Street St Leonards NSW 2065

Project
HAWKESBURY CENTRE OF EXCELLENCE - VINES DRIVE WIDENING

Sheet Subject
GENERAL ARRANGEMENT PLAN SHEET 5

PRELIMINARY
NOT TO BE USED
FOR CONSTRUCTION

Scale : A1
AS SHOWN

Drawn
JH

Authorised
SB

Job No
211091

Drawing No
C35

Revision
P4

Plot File Created: Oct 29, 2021 - 9:31am