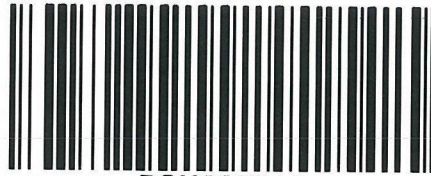




Department
of Industry

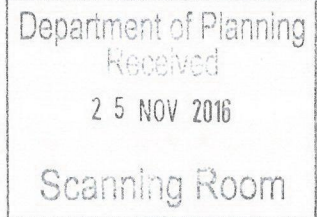


PCU068314

OUT16/45773

Ms Melanie Prior
DA Coordinator
Resource Assessments, Business Systems and Compliance
Department of Planning & Environment
GPO Box 39 SYDNEY NSW 2001

Melanie.Prior@planning.nsw.gov.au



Dear Melanie

Bango Wind Farm (SSD 6686)

I refer to your email dated 23 September 2016 inviting the Division of Resources & Energy (the Division) to provide comments on the Bango Wind Farm Project (SSD 6686).

Bango Wind Farm Pty Ltd ('the Applicant') has submitted an Environmental Impact Statement (EIS) for a proposed solar farm located 10km west of Parkes, in Parkes Local Government Area.

The Bango Wind Farm Project includes:

- construction and operation of a large-scale wind farm with up to 122 wind turbines each of 200 metres in height; and
- associated infrastructure such as a substation, access roads, construction compounds, and overhead and underground transmission lines.

The Division provides the following comments:

The NSW Government is committed to providing a diverse, affordable and clean energy mix for NSW. Wind energy is a key part of that mix. NSW has an abundance of excellent wind resources and established electricity infrastructure that makes it attractive to wind farm developers.

Wind farms drive investment and growth in regional NSW and provide alternate, non-rainfall dependent income streams for traditional farming communities. Wind energy diversifies the energy mix and is supported under the Government's Renewable Energy Action Plan and recently announced Climate Change Policy Framework. Increasing wind energy in NSW will also help the NSW Government meet its commitment to support the national Renewable Energy Target of 33,000 gigawatt hours (GWh) by 2020.

The 326 megawatt (MW) project has a capital investment value of \$326 million and is expected to inject considerable funds into the local community of Yass and support up to 120 jobs during construction and a further 12 during operation. CWP Renewables has committed to a Community Enhancement Fund of \$2,500 per turbine per year and has also established a shared benefits scheme with near-neighbours.

The regional area including the proposed wind farm site is prospective for Group 1 minerals (including gold, silver and base metals) and construction material (roadbase materials) resources (refer to Figure 1- 'Stringybark' & 'Springbank' Pits). The area contains numerous historic mine workings and exploration drill holes (refer to Figure 1 - 'Metallic minerals' and 'Met & Ind Min bores'). A large portion of the project site is covered by a current Exploration Licence (EL 8400) – refer to Figure 1.

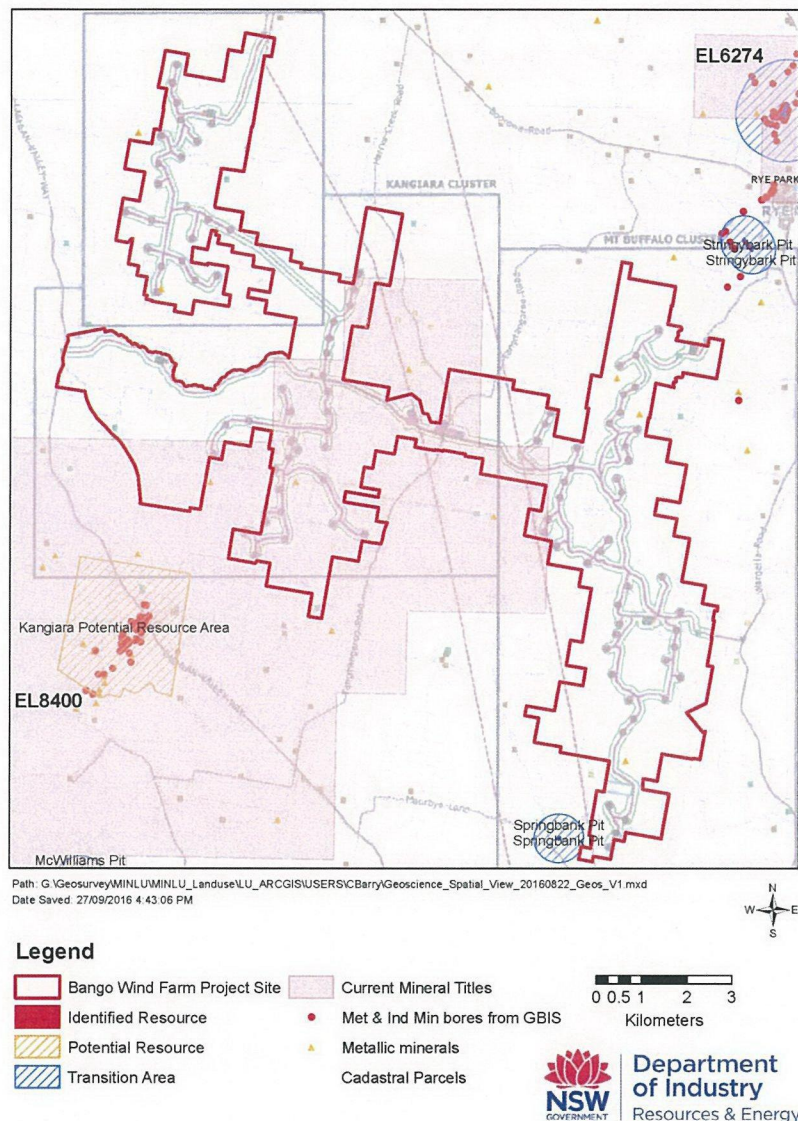


Figure 1 – Location map: Bango Wind Farm project area, identified mineral resources & mineral titles

The Division acknowledges that the proponent has attempted to contact the affected title holders (of previously current) Exploration Licences (ELs) 7412, 7408, 6274, 8313 and Exploration Licence Applications (ELAs) 5005 and 5167 by sending consultation letters and maps showing the layout of the project (see page 134 of the EIS report).

The Division notes that:

- EL 7412 and EL 7408 have been relinquished
- EL 6274 has reduced in area and is no longer impacted by the proposed wind farm
- EL 8313 was granted from ELA 5005 but has since been relinquished
- ELA 5167 was granted as EL 8400 on 20 October 2015.

EL 8400 (previously ELA 5167), held by Ochre Resources Pty Ltd, is now the only current mineral title affected by the development of the wind farm. EL 8400 covers a large portion of the project site, including the proposed locations of 26 wind turbines (Layout Option 1, pg 29 EIS report) or 22 wind turbines (Layout Option 2, pg 30 EIS report) in the Kangiara Cluster. Page 134 of the EIS report states that there was no response received from Ochre Resources regarding EL 8400.

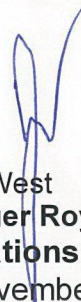
The Division encourages the proponent to continue its attempts to consult with Ochre Resources Pty Ltd (holder of EL 8400) regarding the wind farm development and its impact on current exploration activities and future access to land for mineral exploration.

The Division of Resources and Energy supports CWP Renewables' Bango Wind Farm as it aligns with Government policy to increase renewable energy generation, jobs and investment in the State.

The Renewable Energy Advocate and the Division have been working with CWP Renewables since early 2014 to facilitate development of Bango Wind Farm and will continue to support the project as it progresses through to the construction and commissioning stages.

Should you have any enquires regarding this matter please contact Steve Cozens, Senior Project Officer, Royalty & Advisory Services on 9842 8573.

Yours sincerely

for 
Zane West
Manager Royalties & Advisory Services
Operations & Programs
23 November 2016