

New Primary School in Edmondson Park

Landscape Drawings and Design Report

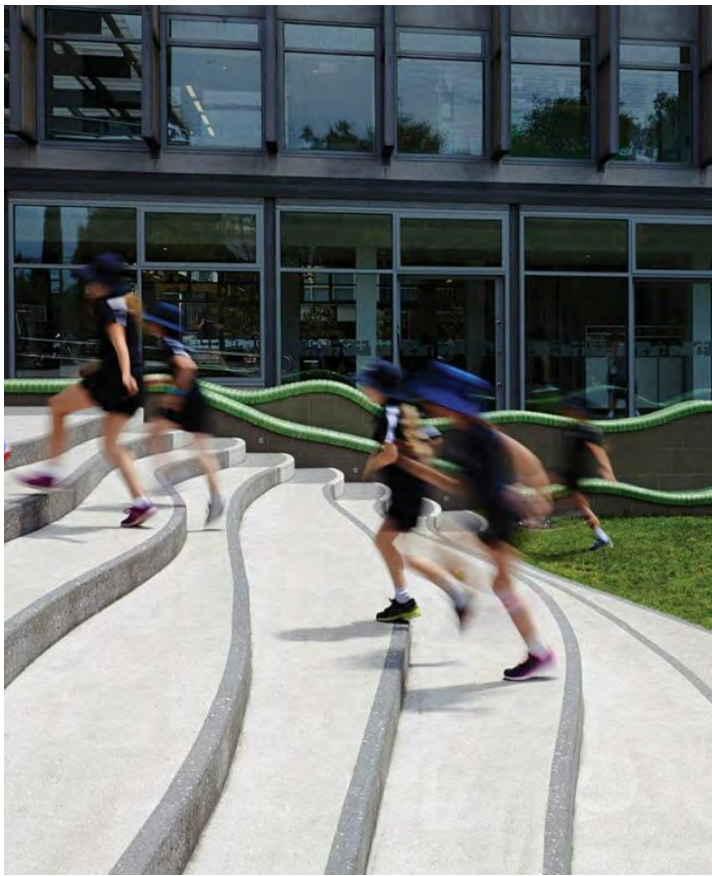
DRAWING LIST

TITLE	DWG No.	REV.
COVER SHEET	LA-W-REP-000-A	E
DESIGN PRINCIPLES	LA-W-REP-001-A	C
EFSG REQUIREMENTS	LA-W-REP-002-A	C
LANDSCAPE MASTERPLAN	LA-W-REP-100-A	D
DETAIL LANDSCAPE PLAN - NORTH	LA-W-REP-101-A	D
DETAIL LANDSCAPE PLAN - SOUTH	LA-W-REP-102-A	D
LANDSCAPE SURFACES FINISHES PLAN - NORTH	LA-W-REP-103-A	C
LANDSCAPE SURFACES FINISHES PLAN - SOUTH	LA-W-REP-104-A	C
LANDSCAPE LEVELS AND GRADING PLAN - NORTH	LA-W-REP-105-A	C
LANDSCAPE LEVELS AND GRADING PLAN - SOUTH	LA-W-REP-106-A	C
LANDSCAPE SECTION A	LA-W-REP-200-A	C
LANDSCAPE SECTION B	LA-W-REP-201-A	B
LANDSCAPE SECTION C	LA-W-REP-202-A	B
STRATEGY DIAGRAMS	LA-W-REP-300-A	E
OPEN SPACE TYPOLOGIES	LA-W-REP-301-A	C
OPEN SPACE TYPOLOGIES	LA-W-REP-302-A	C
OPEN SPACE TYPOLOGIES	LA-W-REP-303-A	C
OPEN SPACE TYPOLOGIES	LA-W-REP-304-A	C
OPEN SPACE TYPOLOGIES	LA-W-REP-305-A	C
INDICATIVE MATERIALS - PALETTE	LA-W-REP-306-A	D
INDICATIVE TREE SCHEDULE	LA-W-REP-307-A	E
INDICATIVE PLANT SCHEDULE	LA-W-REP-308-A	B
INDICATIVE PLANT SCHEDULE	LA-W-REP-309-A	A
SEAR RESPONSE	LA-W-REP-400-A	C



CONTEXT PLAN

Design Principles



1. Context, Built Form and Landscape

- Consider Aboriginal cultural heritage and cultural plantings in the design
- Respond to site topography
- Address interface between community driven spaces and educational focused areas
- Respond to surrounding new residential and commercial developments
- Integrate transport including active pedestrian and cycle movement corridors
- Enhance existing endemic species such as Cumberland Plain Woodland
- Create a sense of identity through place-making and a strong community focused design

2. Sustainable, Efficient and Durable

- Develop a 'Climate Ready School' approach as part of a long term resilient strategy
- Respond to site aspect and micro-climate, particularly solar access, air quality and wind exposure
- Integrate WSUD into the design
- Select sustainable, robust and durable materials
- Promote active and public transport access
- Enhance biodiversity and reintroduce endemic species such as Cumberland Plain Woodland vegetation
- Respond to Urban Heat Island effect

3. Accessible and Inclusive

- Provide school entries that are safe, accessible, visible and welcoming
- Ensure good accessibility and legibility within the school
- Create clear through site links within the site
- Ensure pedestrian and cycle movement corridors accommodate and link to surrounding transport networks

4. Health and Safety

- Respond to local access and connections – footpaths, cycleways, bus, kiss n' drop
- Provide covered areas for protection from sun, rain and wind
- Support a better quality of life for students and local community members
- Sustain good mental and physical health
- Provide secure community accessible areas outside of school hours

5. Amenity

- Provide adequate outdoor space to accommodate student population, including future growth
- Ensure close interfaces between indoor and outdoor uses and spaces
- Provide landscape buffers to setback zones
- Implement areas for sociable activities which is inclusive of place-making

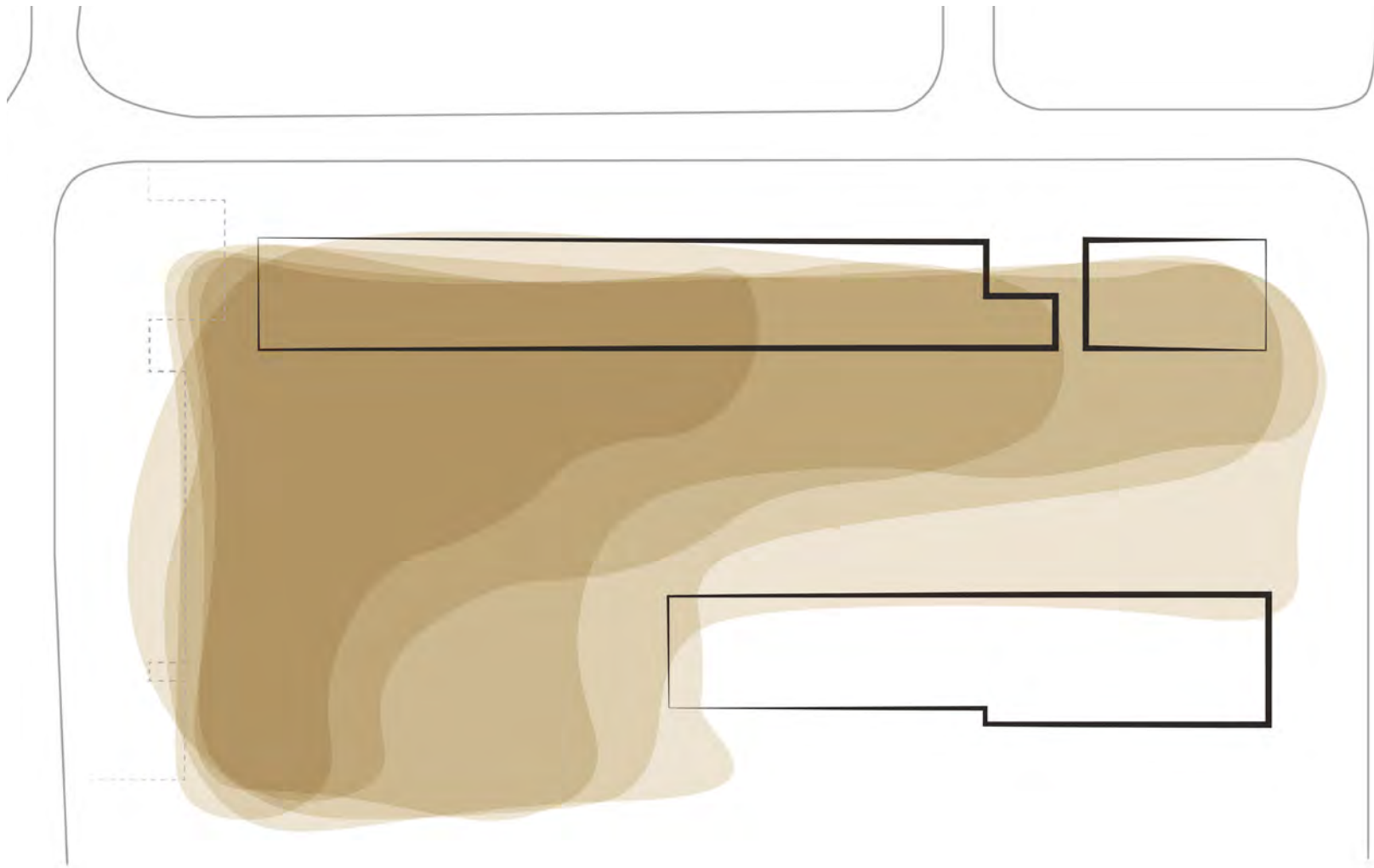
6. Whole Life, Flexibility and Adaptive

- Create a connective network of spaces which integrate play, create interest and a sense of place
- Provide capacity for multiple-use spaces which are flexible in use and have the potential to adapt to the change in functional requirements over time

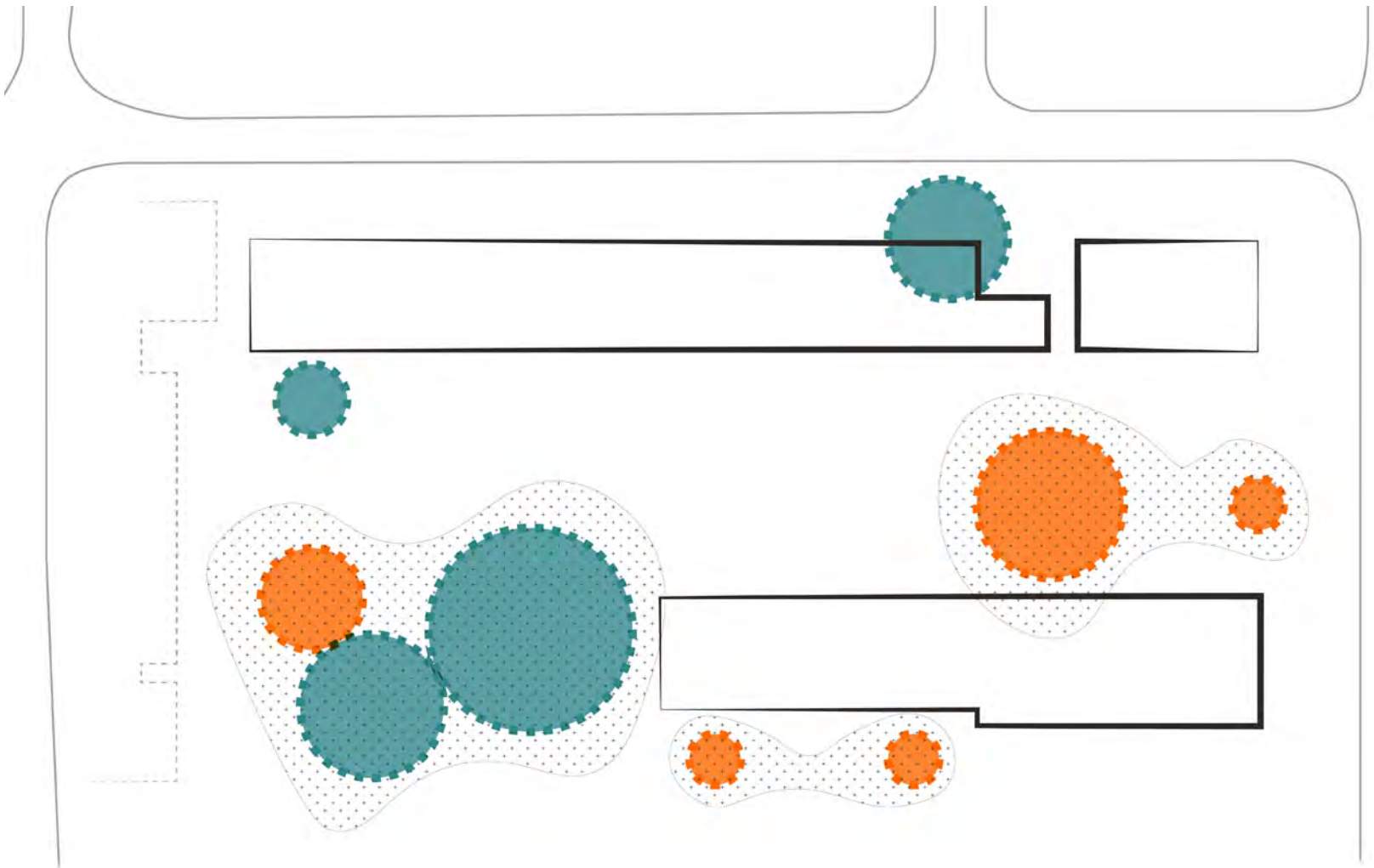
7. Aesthetics

- Create engaging and attractive environments
- Ensure landscape and building design are integrated
- Screen car parking and service zones
- Minimise and integrate security fencing into the design
- Create a stimulating environment which enhances and inspires learning

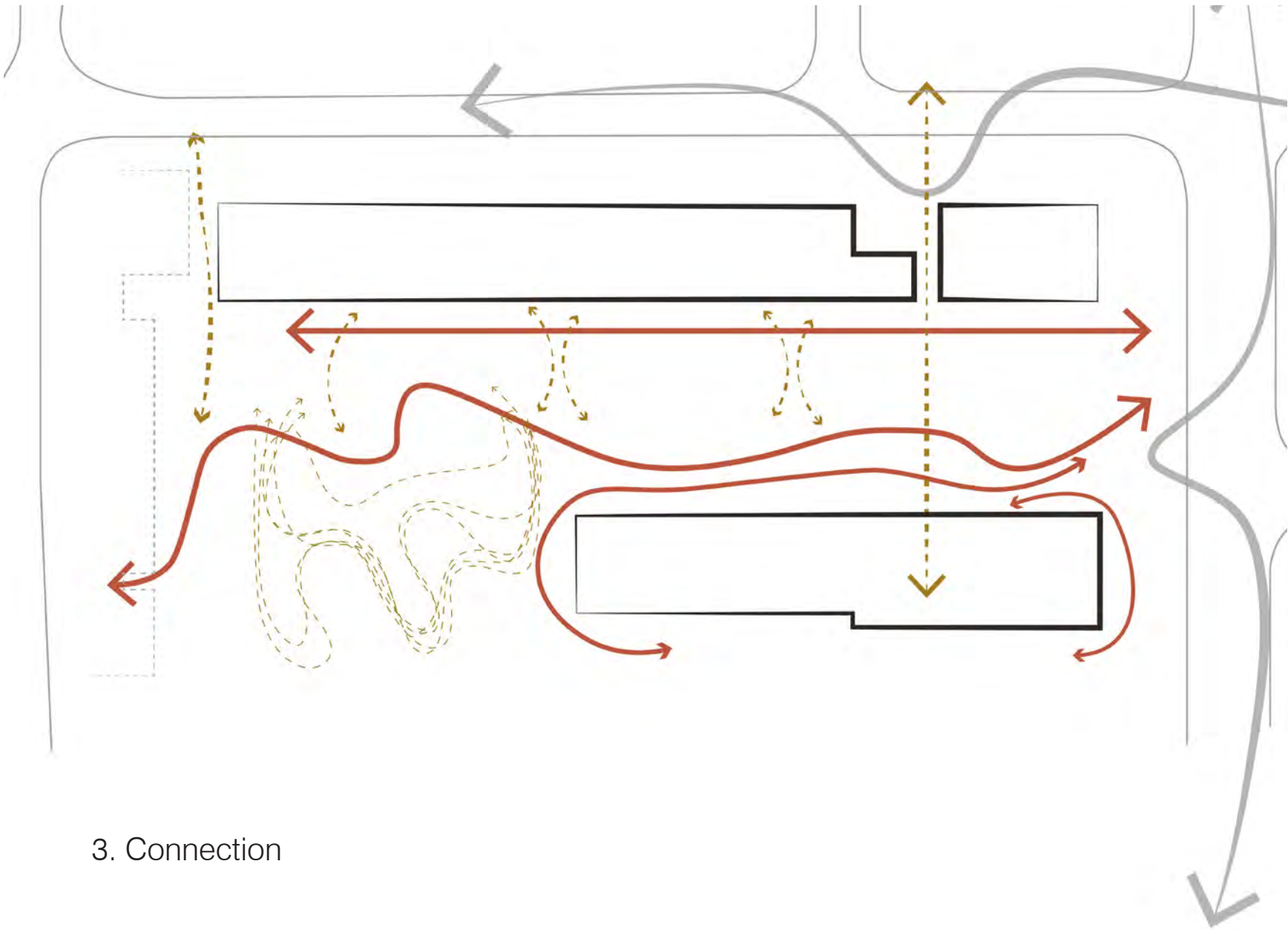
Site Narrative



1. Landform



2. Interaction



3. Connection

Landscape Typologies

The masterplan provides a range of open spaces to facilitate student's learning, physical activity, socialising and well-being. Relationships and adjacencies of uses and circulation patterns have been considered between indoor and outdoor spaces to ensure the smooth operation and use of all areas.

While meeting the functional criteria for the school, the landscape should also reflect the local character of the area, increase tree canopy cover and vegetation, and create a comfortable and inspiring environment for students, staff and visitors.

Accommodation Summary

The masterplan needs to accommodate the EFSG requirements of open space for a Core 35 Primary School. The requirements for Core 35 are shown in the table below.

EFSG Unit	Stream 9 Requirement
PS604 SERVERY COVERED AREA - TYPE 4	200m ²
PS604 COVERED OUTDOOR LEARNING AREA (COLA)	439m ²
PS505 GAMES UNIT	1. Total
PS607 ASSEMBLY AREA	875m ²

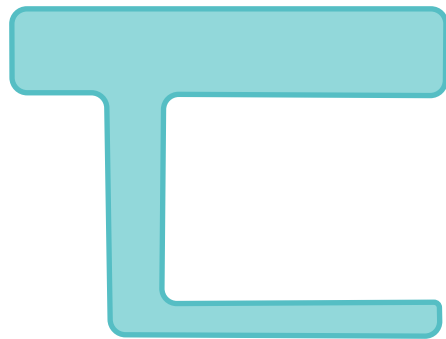
* inclusive of Assembly Court, all Covered Outdoor Spaces, Outdoor Learning Units, Games Field & Courts, and 'passive open spaces'.



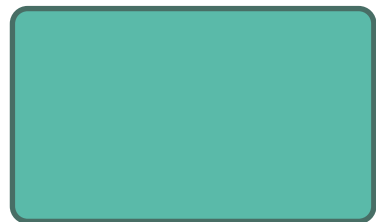
Servery Covered Area
- 200m²



Covered Outdoor Learning
Area (COLA) - 439m²



Games Unit - 455m²



Assembly/ Amphitheatre
Area - 630m²





LEGEND

- 1 Main school entrance
- 2 Secondary entry and ramp access
- 3 Pre-school Entrance
- 4 Vehicle entrance to carpark and pre-school drop off area
- 5 After hours pedestrian access
- 6 Amphitheatre and assembly area
- 7 COLA
- 8 Organised play and gathering space with formal canopy cover
- 9 Outdoor classrooms
- 10 Obstacle free building pedestrian access
- 11 SSU outdoor space and sensory garden
- 12 Active open recreational space
- 13 Semi-terraced Bush Food Garden
- 14 Games court
- 15 Planting embankment
- 16 Main access path
- 17 Indicative Pre-school outdoor play
- 18 Cycle facilities / bench seating
- 19 Pre-school drop off and parking area
- 20 Waste Area
- 21 Cycle storage units
- 22 Maintenance path

O C U L U S
level 1, 5 wilson street / post box 307 newtown nsw 2042
p 02.9557.5533. f 02.9519.8323 mail@oculus.com.au

SCHOOLS
INFRASTRUCTURE NSW

Date	Rev. Description	Rev
07/05/21	Issue for DRAFT SSDA	A
18/05/21	Issue for SSDA	B
13/08/21	Issue for SSDA - Response to Submissions	C
18/08/21	Issue for SSDA - Response to Submissions	D

NEW PRIMARY SCHOOL IN
EDMONDSON PARK

Landscape Masterplan

scale: 1:500 @A1
job no.: S21-008
date: 11/06/21

drawn by:
checked:

CM/ZW
KS



LA-W-REP-
100-A

D



- LEGEND
- 1 Main pedestrian access
 - 2 Secondary entrance and ramp access
 - 3 Cycle Storage units
 - 4 After hours pedestrian access
 - 5 Canteen and COLA area
 - 6 Amphitheatre/ Assemble area
 - 7 Boundary edge buffer planting. All trees 1m from fences and 6m from substation/FPR
 - 8 Outdoor play and gathering area
 - 9 Passive recreational space
 - 10 Outdoor classrooms
 - 11 Unobstructed building front access
 - 12 SSU Outdoor play and sensory garden
 - 13 Connecting pedestrian access routes
 - 14 Embankment planting
 - 15 Building canopy
 - 16 Maintenance path
 - 17 Ramp access
 - 18 Stair access

O C U L U S
level 1, 5 wilson street / post box 307 newtown nsw 2042
p 02.9557.5533. f 02.9519.8323 mail@oculus.com.au

SCHOOLS
INFRASTRUCTURE NSW

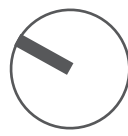
Date	Rev. Description	Rev
07/05/21	Issue for DRAFT SSDA	A
18/05/21	Issue for SSDA	B
13/08/21	Issue for SSDA - Response to Submissions	C
18/08/21	Issue for SSDA - Response to Submissions	D

NEW PRIMARY SCHOOL IN
EDMONDSON PARK

Landscape Illustrative
Plan - North

scale: 1:250 @A1
job no.: S21-008
date: 11/06/21

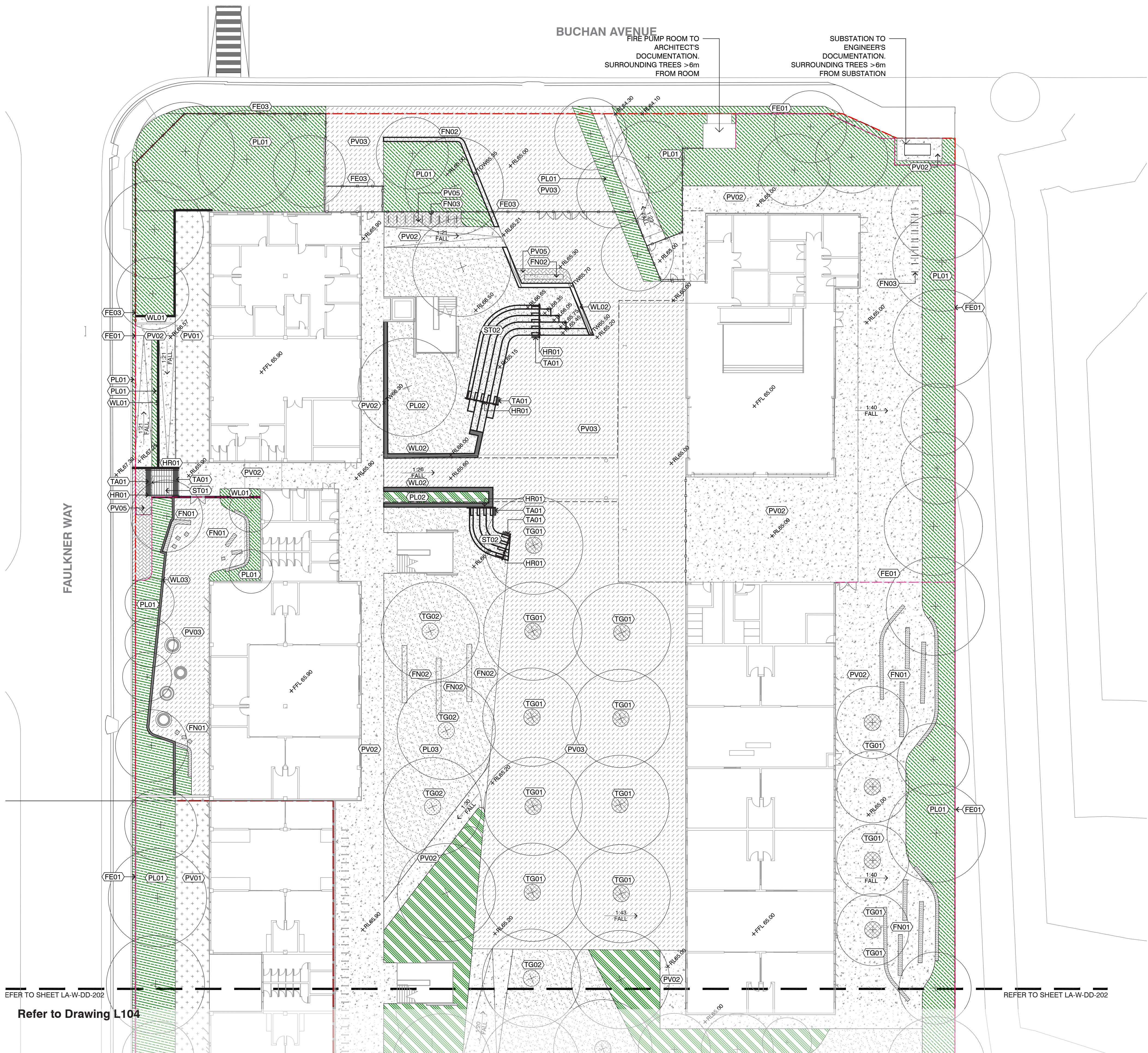
drawn by: CM/ZW
checked: KS



LA-W-REP-
101-A

D





GENERAL

- EXTENT OF WORKS
- SPLIT ARCHITECTURAL LEVEL

GRADING

- RELATIVE LEVEL
- TOP OF WALL
- GRADING FALL
- PROPOSED GRADING LINE

PV - PAVING

- PAVEMENT TYPE 01
DECOMPOSED GRANITE
- PAVEMENT TYPE 02
INSITU CONCRETE PAVING
- PAVEMENT TYPE 03
INSITU CONCRETE PAVING WITH OXIDE TO COLOUR AND SURFACE ETCHINGS
- PAVEMENT TYPE 05
BRICK PAVER
- PAVEMENT TYPE 06
VEHICULAR ASPHALT. REFER TO CIVIL ENGINEERS DRAWINGS
- PAVEMENT TYPE 07
RUBBER SOFT FALL
- PAVEMENT TYPE 08
PAINTED ASPHALT

PL - PLANTING

- PLANTING TYPE 01
PERIMETER MASS PLANTING
- PLANTING TYPE 02
FEATURE AND EMBANKMENT PLANTING
- PLANTING TYPE 03
LAWN
- PLANTING TYPE 04
EDIBLE PLANTING

WL - WALLS

- WALL TYPE 01
150mm CONCRETE WALL
- WALL TYPE 02
500mm CONCRETE RETAINING
- WALL TYPE 03
GREEN WALL

FN - FURNITURE

- FURNITURE TYPE 01
SANDSTONE SEATING LOG
- FURNITURE TYPE 02
CONCRETE WALL SEAT
- FURNITURE TYPE 04
BICYCLE HOOP

FE - FENCES

- FENCE TYPE 01
STEEL PALISADE FENCE
- FENCE TYPE 02
CHAINLINK SPORTS FENCE
- FENCE TYPE 03
BASTILLE FENCE
- FENCE TYPE 04
1.2m HIGH POOL FENCE

ST - STAIRS

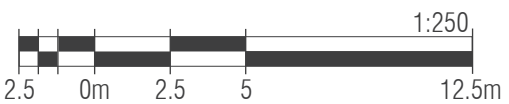
- CONCRETE STAIRS
- CONCRETE SEATING STAIRS \ ACCESS STAIRS
- TACTILE PAVERS

HR - HANDRAIL

- DOUBLE HEIGHT HANDRAIL
- STEEL BALUSTRADE

TP - TREE PLANTING

- TREE PIT TO EFSG REQUIREMENTS
- MULCH TO BASE OF TREE W/ SPADE EDGE
- TREE PLANTING PROPOSED TREE

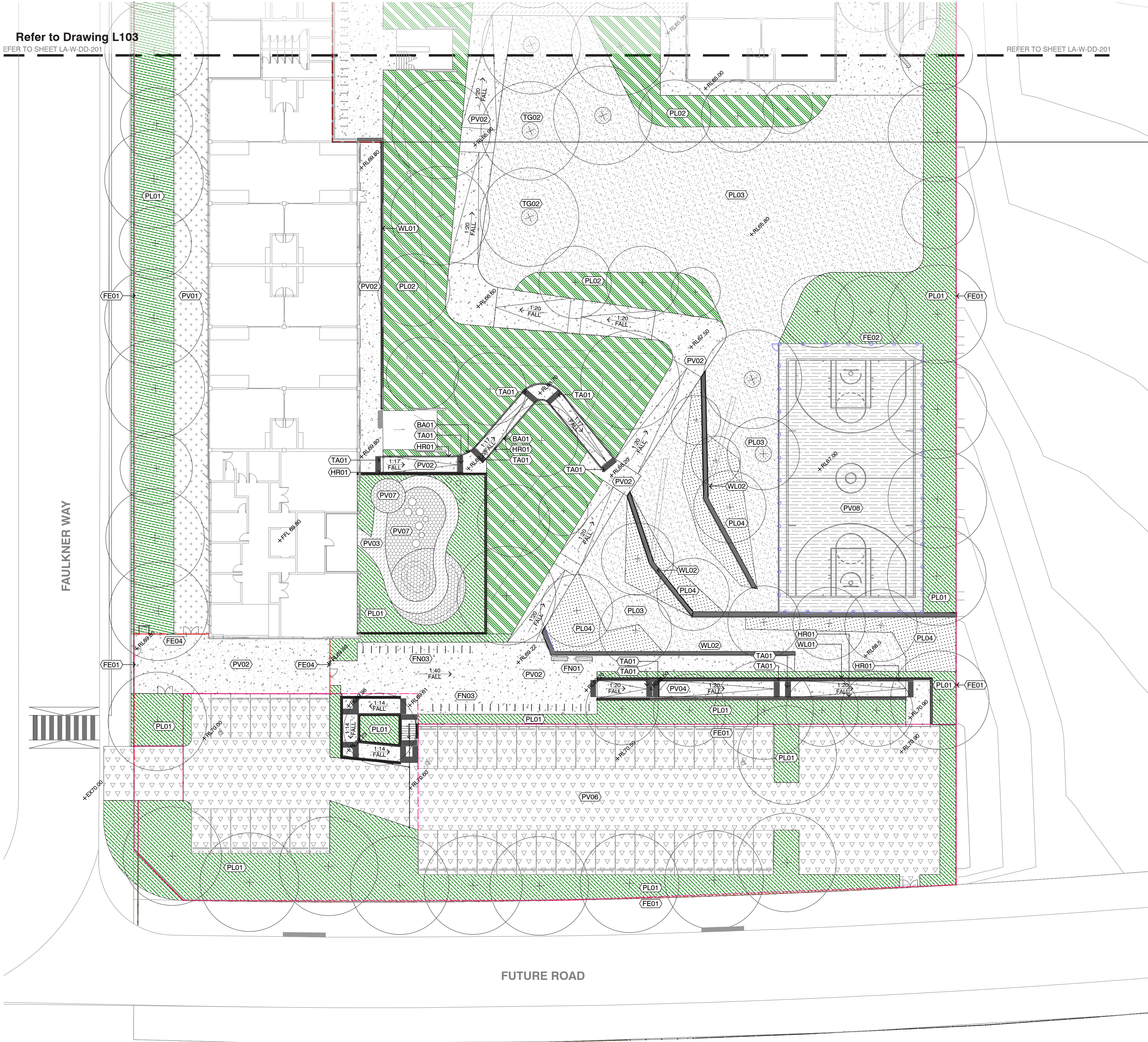


Date	Rev. Description	Rev
18/05/21	Issue for SSDA	A
13/08/21	Issue for SSDA - Response to Submissions	B
18/08/21	Issue for SSDA - Response to Submissions	C



Refer to Drawing L103
REFER TO SHEET LA-W-DD-201

REFER TO SHEET LA-W-DD-201



GENERAL

- EXTENT OF WORKS
- SPLIT ARCHITECTURAL LEVEL

GRADING

- RELATIVE LEVEL
- TOP OF WALL
- GRADING FALL
- PROPOSED GRADING LINE

PV - PAVING

- PAVEMENT TYPE 01
DECOMPOSED GRANITE
- PAVEMENT TYPE 02
INSITU CONCRETE PAVING
- PAVEMENT TYPE 03
INSITU CONCRETE PAVING WITH OXIDE TO COLOUR AND SURFACE ETCHINGS
- PAVEMENT TYPE 05
BRICK PAVER
- PAVEMENT TYPE 06
VEHICULAR ASPHALT. REFER TO CIVIL ENGINEERS DRAWINGS
- PAVEMENT TYPE 07
RUBBER SOFT FALL
- PAVEMENT TYPE 08
PAINTED ASPHALT

PL - PLANTING

- PLANTING TYPE 01
PERIMETER MASS PLANTING
- PLANTING TYPE 02
FEATURE AND EMBANKMENT PLANTING
- PLANTING TYPE 03
LAWN
- PLANTING TYPE 04
EDIBLE PLANTING

WL - WALLS

- WALL TYPE 01
150mm CONCRETE WALL
- WALL TYPE 02
500mm CONCRETE RETAINING
- WALL TYPE 03
GREEN WALL

FN - FURNITURE

- FURNITURE TYPE 01
SANDSTONE SEATING LOG
- FURNITURE TYPE 02
CONCRETE WALL SEAT
- FURNITURE TYPE 04
BICYCLE HOOP

FE - FENCES

- FENCE TYPE 01
STEEL PALISADE FENCE
- FENCE TYPE 02
CHAINLINK SPORTS FENCE
- FENCE TYPE 03
BASTILLE FENCE
- FENCE TYPE 04
1.2m HIGH POOL FENCE

ST - STAIRS

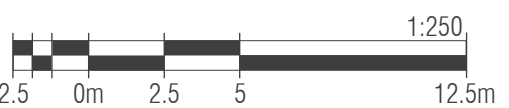
- CONCRETE STAIRS
- CONCRETE SEATING STAIRS \ ACCESS STAIRS
- TACTILE PAVERS

HR - HANDRAIL

- DOUBLE HEIGHT HANDRAIL
- STEEL BALUSTRADE

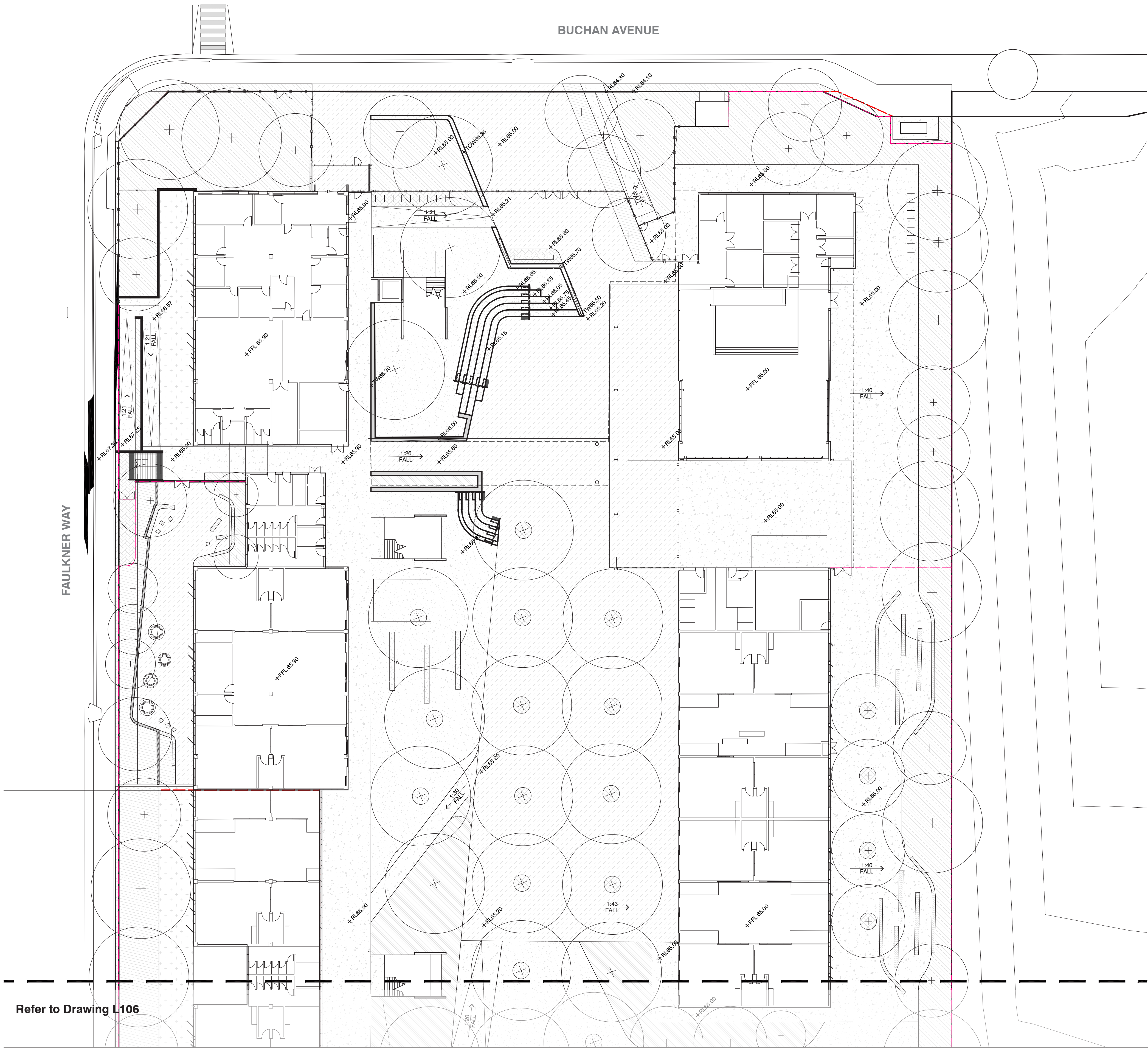
TP - TREE PLANTING

- TREE PIT TO EFSG REQUIREMENTS
- MULCH TO BASE OF TREE WITH SPADE EDGE
- TREE PLANTING PROPOSED TREE



Date	Rev. Description	Rev
18/05/21	Issue for SSDA	A
13/08/21	Issue for SSDA - Response to Submissions	B
18/08/21	Issue for SSDA - Response to Submissions	C





GENERAL

- EXTENT OF WORKS
- SPLIT ARCHITECTURAL LEVEL

GRADING

- RELATIVE LEVEL
- TOP OF WALL
- GRADING FALL
- PROPOSED GRADING LINE

PV - PAVING

- PAVEMENT TYPE 01
DECOMPOSED GRANITE
- PAVEMENT TYPE 02
INSITU CONCRETE PAVING
- PAVEMENT TYPE 03
INSITU CONCRETE PAVING WITH OXIDE TO COLOUR AND SURFACE ETCHINGS
- PAVEMENT TYPE 05
BRICK PAVER
- PAVEMENT TYPE 06
VEHICULAR ASPHALT. REFER TO CIVIL ENGINEERS DRAWINGS
- PAVEMENT TYPE 07
RUBBER SOFT FALL
- PAVEMENT TYPE 08
PAINTED ASPHALT

PL - PLANTING

- PLANTING TYPE 01
PERIMETER MASS PLANTING
- PLANTING TYPE 02
FEATURE AND EMBANKMENT PLANTING
- PLANTING TYPE 03
LAWN
- PLANTING TYPE 04
EDIBLE PLANTING

WL - WALLS

- WALL TYPE 01
150mm CONCRETE WALL
- WALL TYPE 02
500mm CONCRETE RETAINING
- WALL TYPE 03
GREEN WALL

FN - FURNITURE

- FURNITURE TYPE 01
SANDSTONE SEATING LOG
- FURNITURE TYPE 02
CONCRETE WALL SEAT
- FURNITURE TYPE 04
BICYCLE HOOP

FE - FENCES

- FENCE TYPE 01
STEEL PALISADE FENCE
- FENCE TYPE 02
CHAINLINK SPORTS FENCE
- FENCE TYPE 03
BASTILLE FENCE
- FENCE TYPE 04
1.2m HIGH POOL FENCE

ST - STAIRS

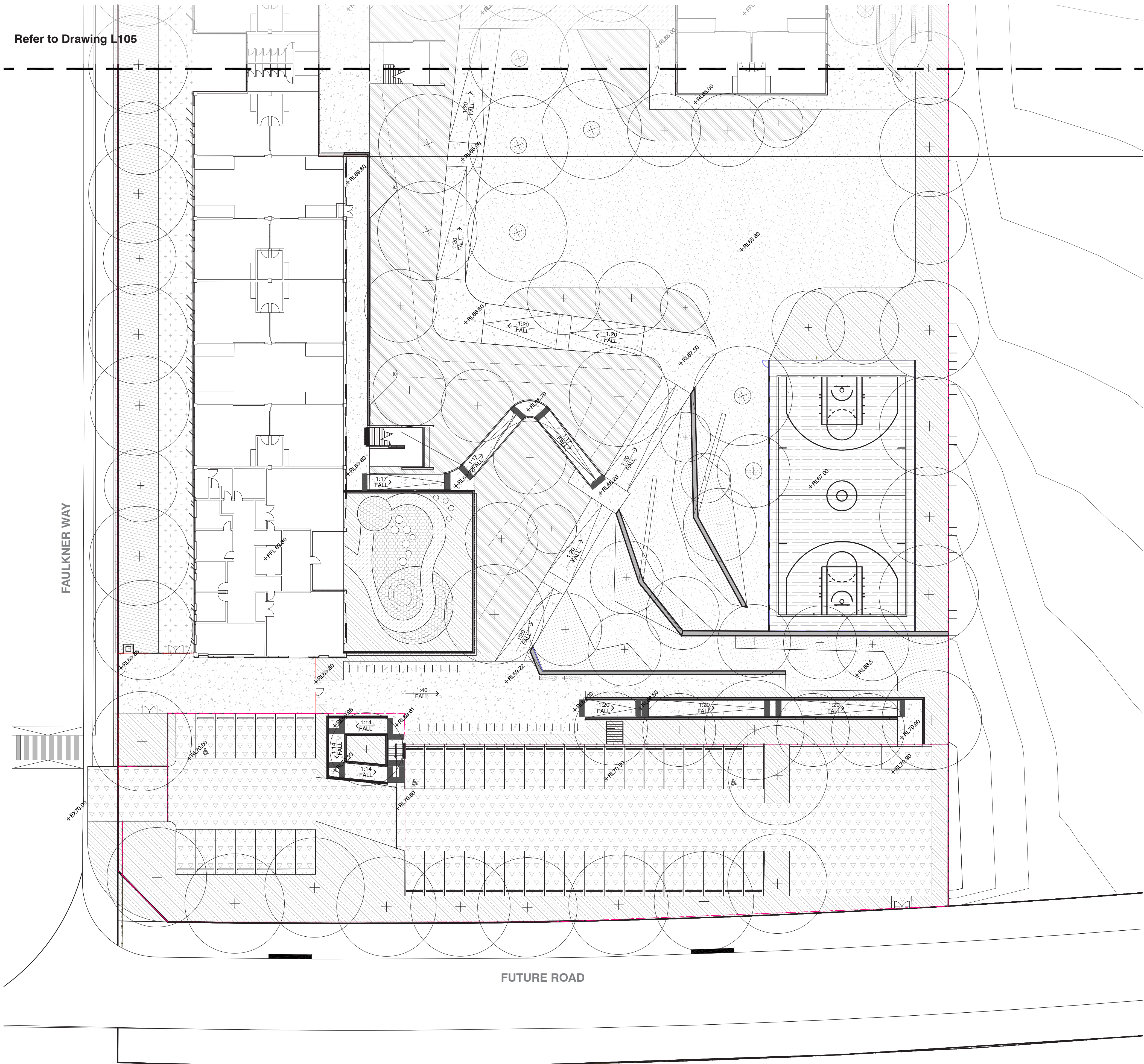
- CONCRETE STAIRS
- CONCRETE SEATING STAIRS \ ACCESS STAIRS
- TACTILE PAVERS

HR - HANDRAIL

- DOUBLE HEIGHT HANDRAIL
- STEEL BALUSTRADE

TP - TREE PLANTING

- TREE PIT TO EFSG REQUIREMENTS
- MULCH TO BASE OF TREE W/ SPADE EDGE
- TREE PLANTING PROPOSED TREE



GENERAL

- EXTENT OF WORKS
- SPLIT ARCHITECTURAL LEVEL

GRADING

- RELATIVE LEVEL
- TOP OF WALL
- GRADING FALL
- PROPOSED GRADING LINE

PV - PAVING

- PAVEMENT TYPE 01
DECOMPOSED GRANITE
- PAVEMENT TYPE 02
INSITU CONCRETE PAVING
- PAVEMENT TYPE 03
INSITU CONCRETE PAVING WITH OXIDE TO COLOUR AND SURFACE ETCHINGS
- PAVEMENT TYPE 05
BRICK PAVER
- PAVEMENT TYPE 06
VEHICULAR ASPHALT. REFER TO CIVIL ENGINEERS DRAWINGS
- PAVEMENT TYPE 07
RUBBER SOFT FALL
- PAVEMENT TYPE 08
PAINTED ASPHALT

PL - PLANTING

- PLANTING TYPE 01
PERIMETER MASS PLANTING
- PLANTING TYPE 02
FEATURE AND EMBANKMENT PLANTING
- PLANTING TYPE 03
LAWN
- PLANTING TYPE 04
EDIBLE PLANTING

WL - WALLS

- WALL TYPE 01
150mm CONCRETE WALL
- WALL TYPE 02
500mm CONCRETE RETAINING
- WALL TYPE 03
GREEN WALL

FN - FURNITURE

- FURNITURE TYPE 01
SANDSTONE SEATING LOG
- FURNITURE TYPE 02
CONCRETE WALL SEAT
- FURNITURE TYPE 04
BICYCLE HOOP

FE - FENCES

- FENCE TYPE 01
STEEL PALISADE FENCE
- FENCE TYPE 02
CHAINLINK SPORTS FENCE
- FENCE TYPE 03
BASTILLE FENCE
- FENCE TYPE 04
1.2m HIGH POOL FENCE

ST - STAIRS

- CONCRETE STAIRS
- CONCRETE SEATING STAIRS \ ACCESS STAIRS
- TACTILE PAVERS

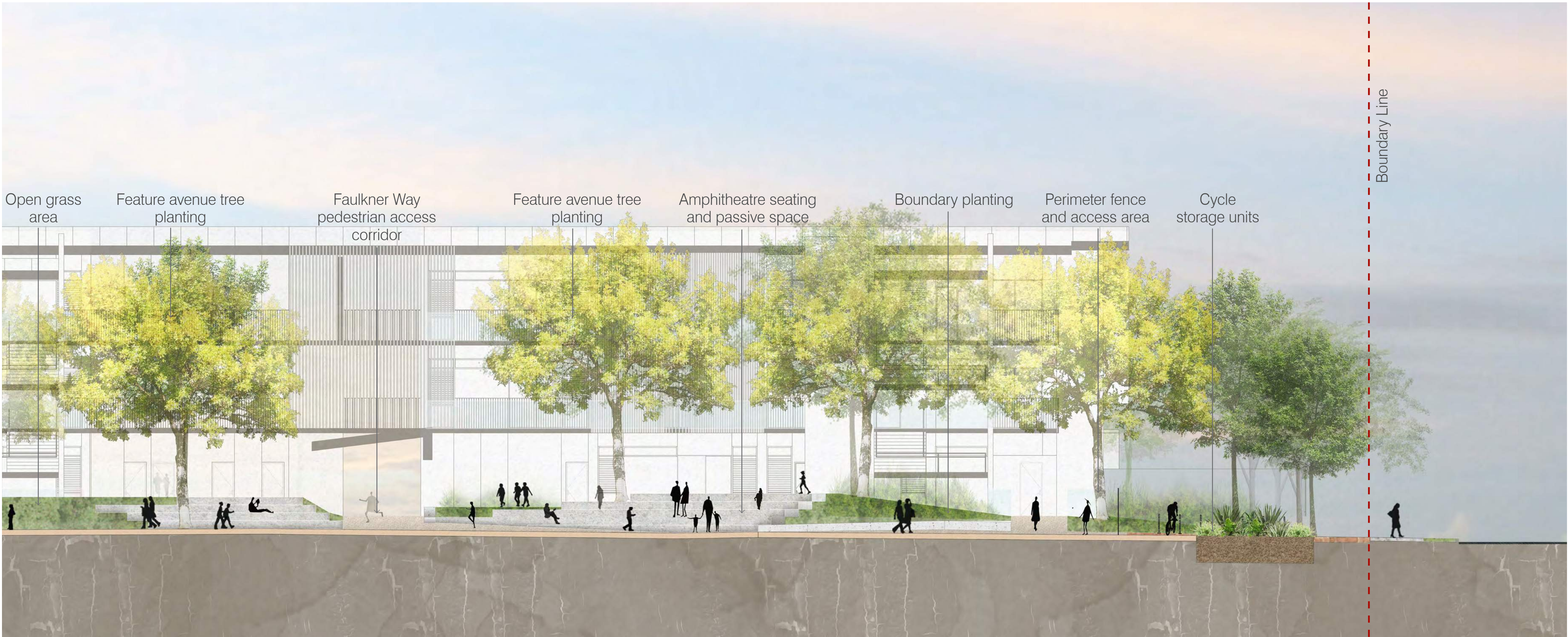
HR - HANDRAIL

- DOUBLE HEIGHT HANDRAIL
- STEEL BALUSTRADE

TP - TREE PLANTING

- TREE PIT TO EFSG REQUIREMENTS
- MULCH TO BASE OF TREE W/ SPADE EDGE
- TREE PLANTING PROPOSED TREE

- LEGEND
- 1 Assembly area with feature deciduous tree avenue planting
 - 2 Informal passive grass area
 - 3 Entrance courtyard area
 - 4 Boundary planting
 - 5 Buchan Street main entrance. Cycle storage units positioned along edge treatment



Amphitheatre/ Assembly area and functional passive space Connecting walkway from Faulkner Way Amphitheatre/ Assembly area with graded step seating Planting embankment Entrance with cycle storage facilities Footway and roadside planting verge along Buchan Ave Existing carriageway

O C U L U S
level 1, 5 wilson street / post box 307 newtown nsw 2042
p 02.9557.5533. f 02.9519.8323 mail@oculus.com.au

SCHOOLS
INFRASTRUCTURE NSW

Date	Rev. Description	Rev
07/05/21	Issue for DRAFT SSDA	A
18/05/21	Issue for SSDA	B
13/08/21	Issue for SSDA - Response to Submissions	C

NEW PRIMARY SCHOOL IN
EDMONDSON PARK

Landscape Section A

scale:
job no.:
date:

As Shown
S21-008
11/06/21

drawn by:
checked:

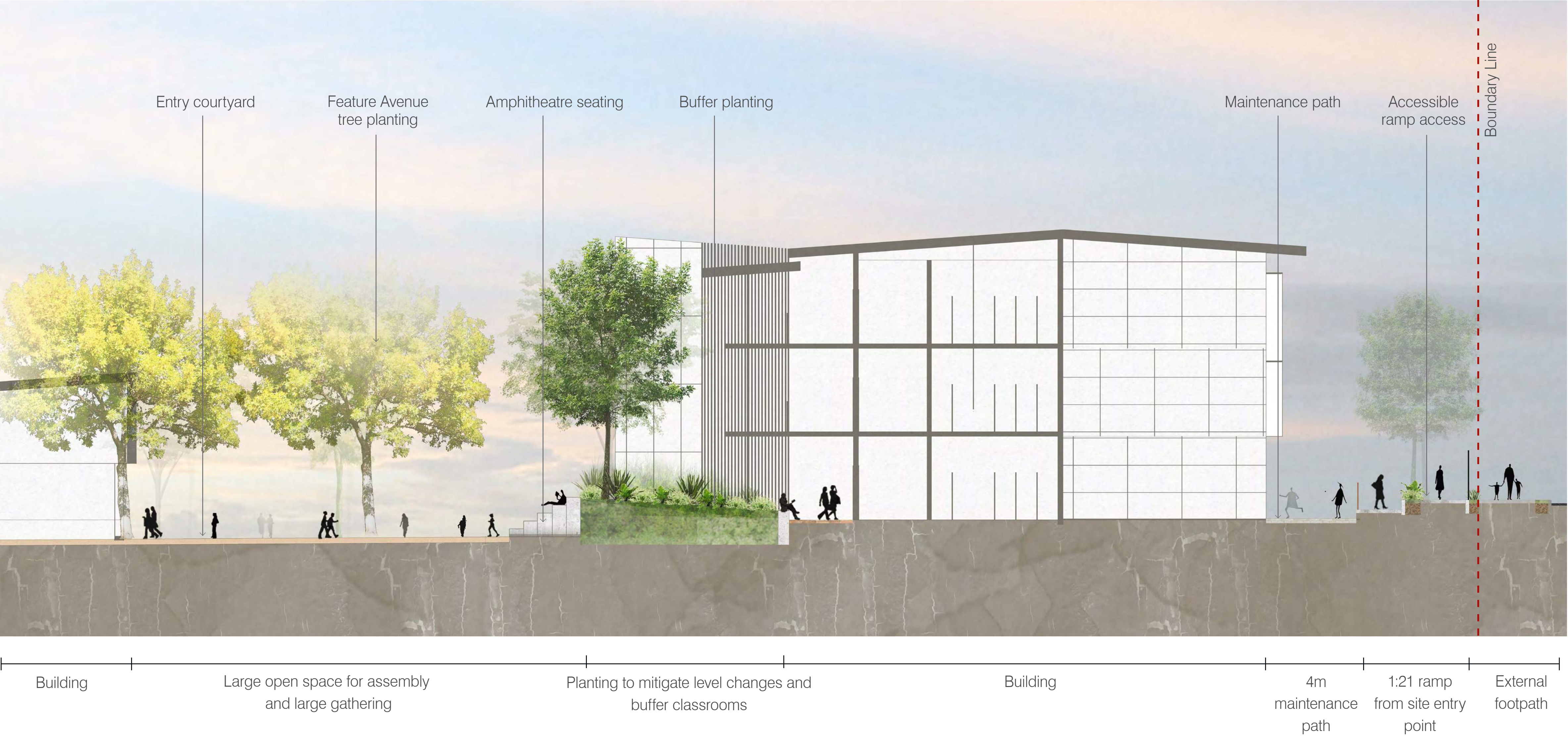
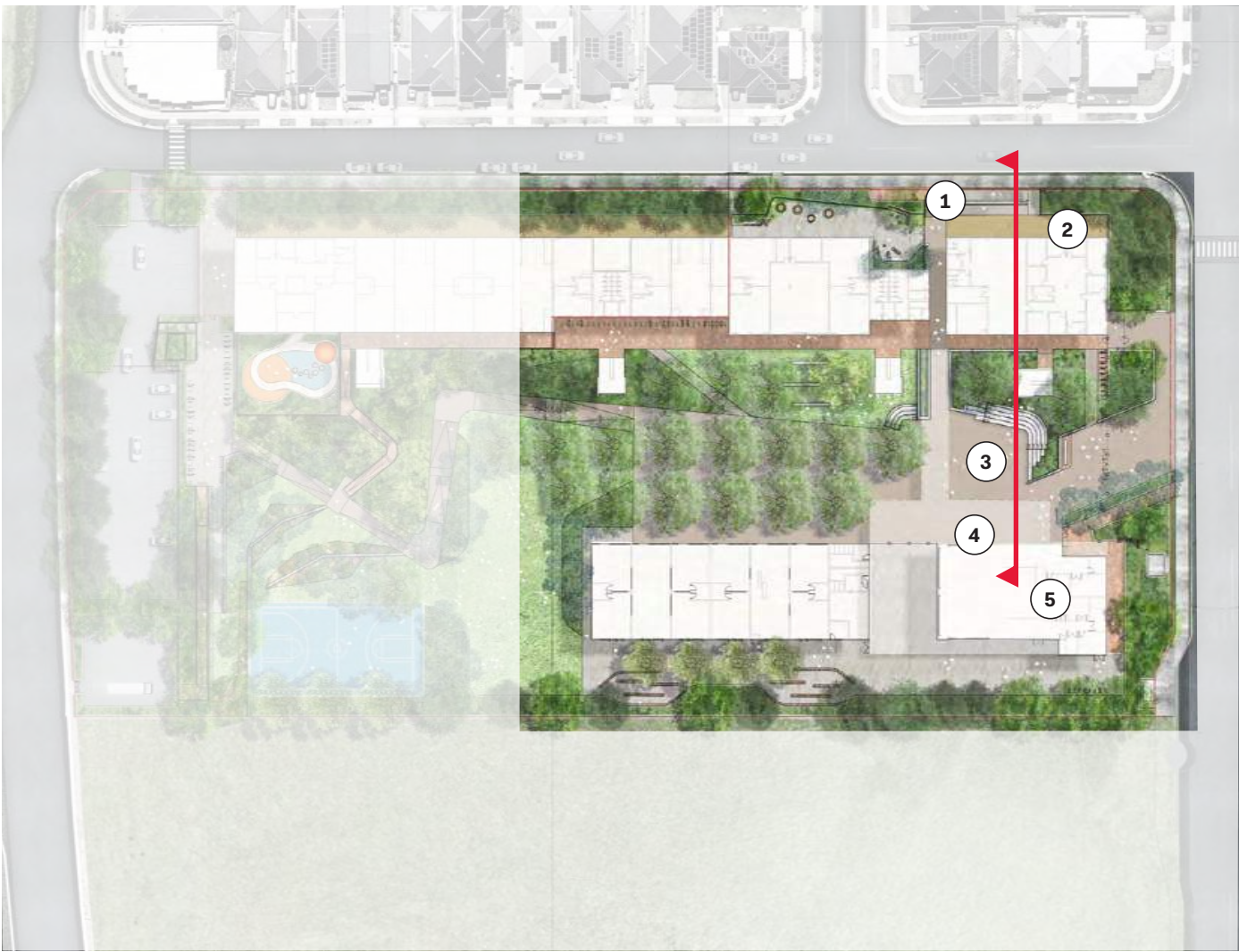
CM/ZW
KS



LA-W-REP-
200-A

C

- LEGEND
- ① Ramp access to site
 - ② Maintenance path
 - ③ Entrance courtyard area
 - ④ Building front access
 - ⑤ Hall and COLA Building



O C U L U S
level 1, 5 wilson street / post box 307 newtown nsw 2042
p 02.9557.5533. f 02.9519.8323 mail@oculus.com.au

SCHOOLS
INFRASTRUCTURE NSW

Date	Rev. Description	Rev
18/05/21	Issue for SSDA	A
13/08/21	Issue for SSDA - Response to Submissions	B

NEW PRIMARY SCHOOL IN
EDMONDSON PARK

Landscape Section B

scale:
job no.:
date:

As Shown
S21-008
11/06/21

drawn by:
checked:

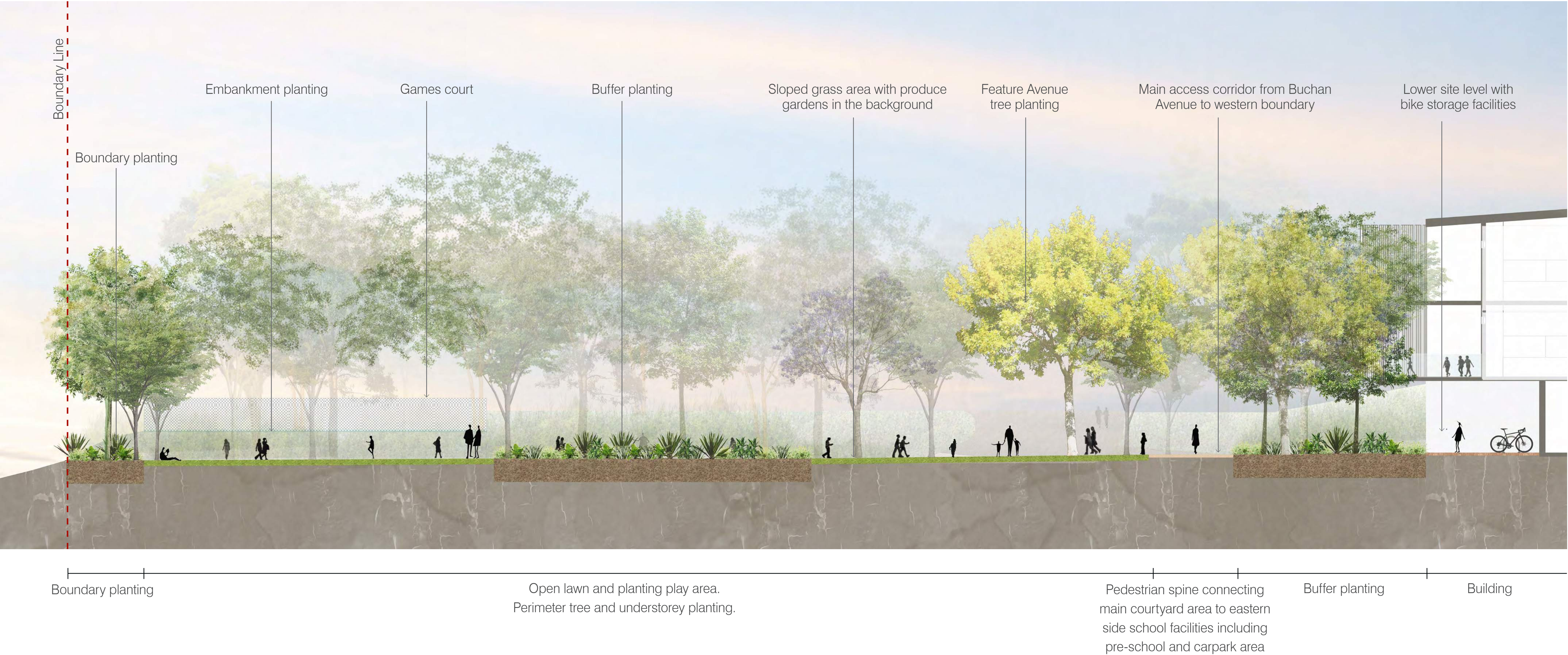
CM/ZW
KS



LA-W-REP-
201-A

B

- LEGEND**
- ① Obstacle free building front movement corridor
 - ② Ramp access
 - ③ Main access spine
 - ④ Informal active open space
 - ⑤ Boundary buffer planting



O C U L U S
level 1, 5 wilson street / post box 307 newtown nsw 2042
p 02.9557.5533. f 02.9519.8323 mail@oculus.com.au

SCHOOLS
INFRASTRUCTURE NSW

Date	Rev. Description	Rev
18/05/21	Issue for SSDA	A
13/08/21	Issue for SSDA - Response to Submissions	B

NEW PRIMARY SCHOOL IN
EDMONDSON PARK

Landscape Section C

scale:
job no.:
date:

As Shown
S21-008
11/06/21

drawn by:
checked:

CM/ZW
KS



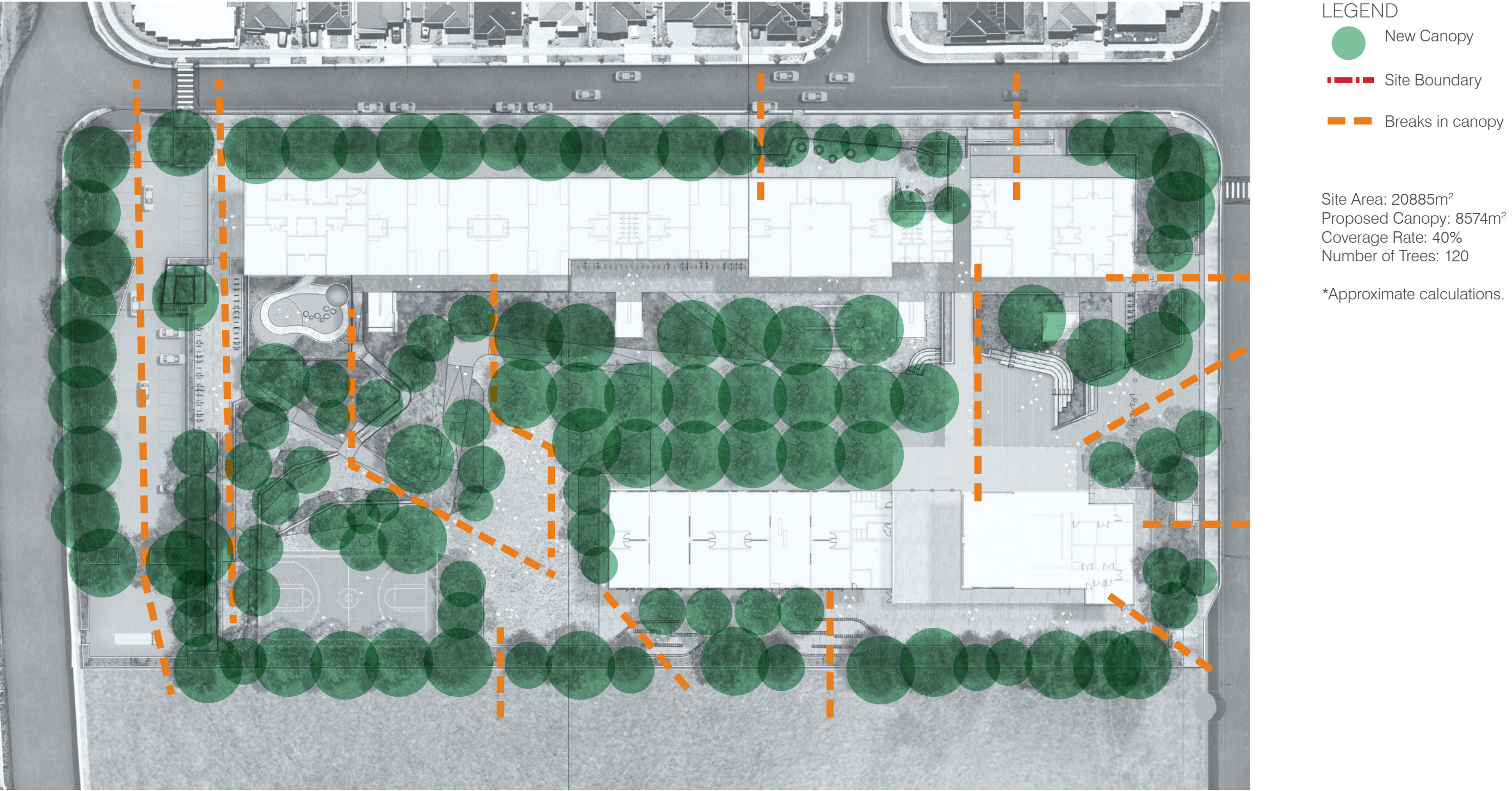
LA-W-REP-
202-A

B

Planting Strategy



Tree Canopy Cover

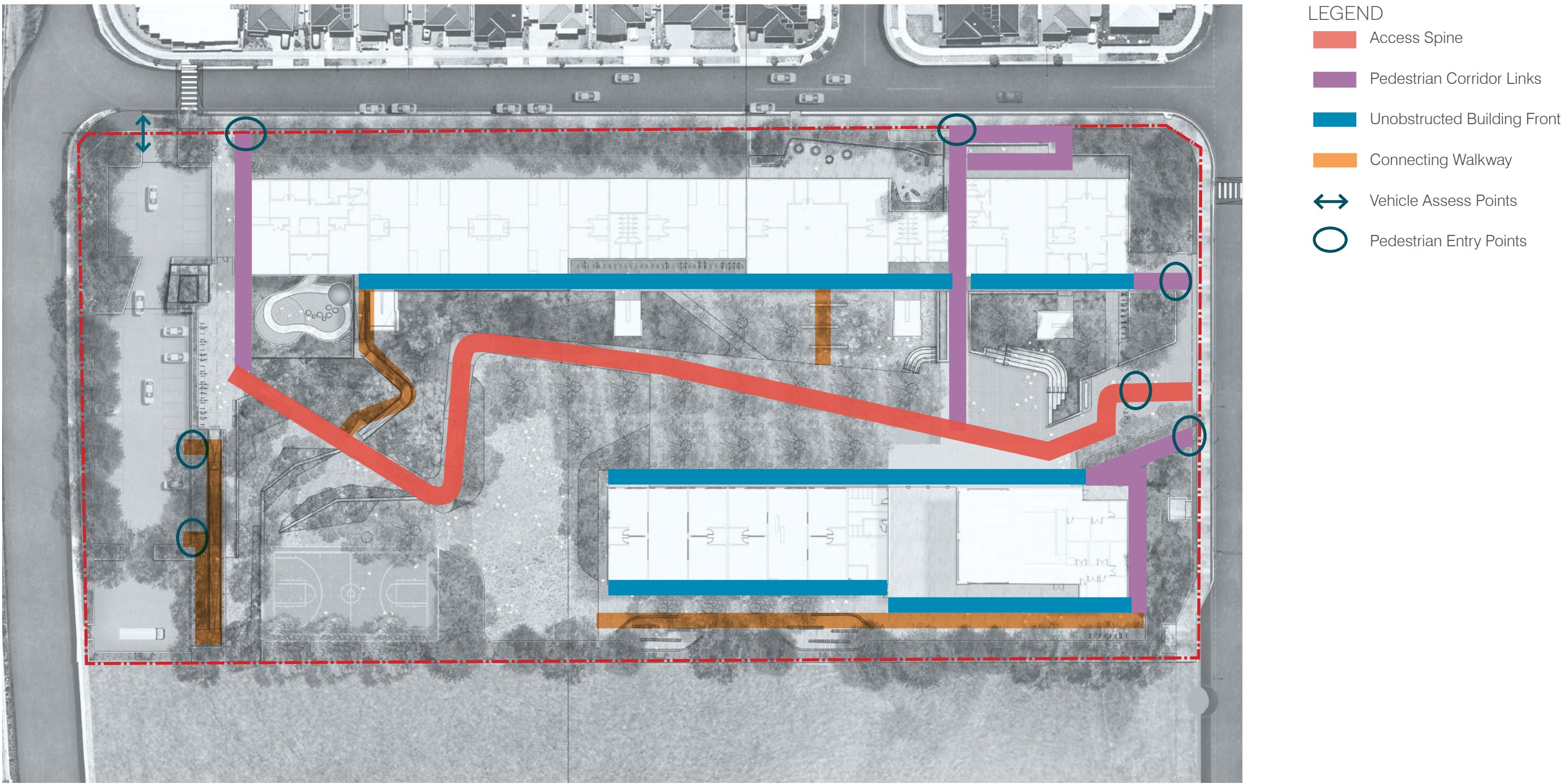


Note, to help manage bushfire, groupings of trees are required to be separated 2 to 5m at maturity. In addition, trees at maturity should not touch or overhang the buildings.

Fencing Strategy



Pedestrian Movement Corridor



Date	Rev. Description	Rev
07/05/21	Issue for DRAFT SSDA	A
18/05/21	Issue for SSDA	B
04/08/21	Issue for information	C
13/08/21	Issue for SSDA - Response to Submissions	D
18/08/21	Issue for SSDA - Response to Submissions	E



Entrance Areas



Outdoor Assembly Area



Image:
AHR, Rowley Learning Campus,
United Kingdom



Image:
Lipman-Context, Bella-Vista
Public School, NSW



Image:
AHR ,David Livingstone
Memorial Primary School , UK



Image:
Germany

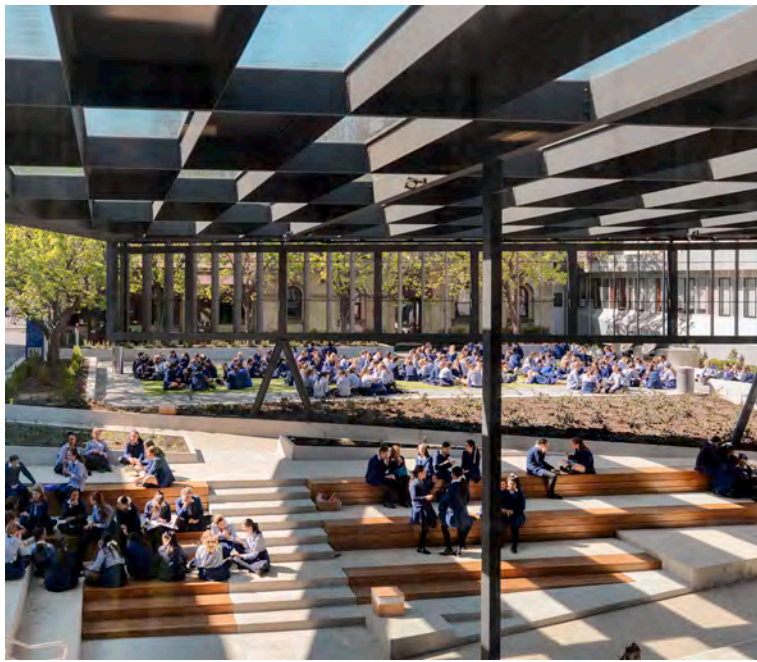


Image:
OCULUS, Loreto Mandeville, VIC

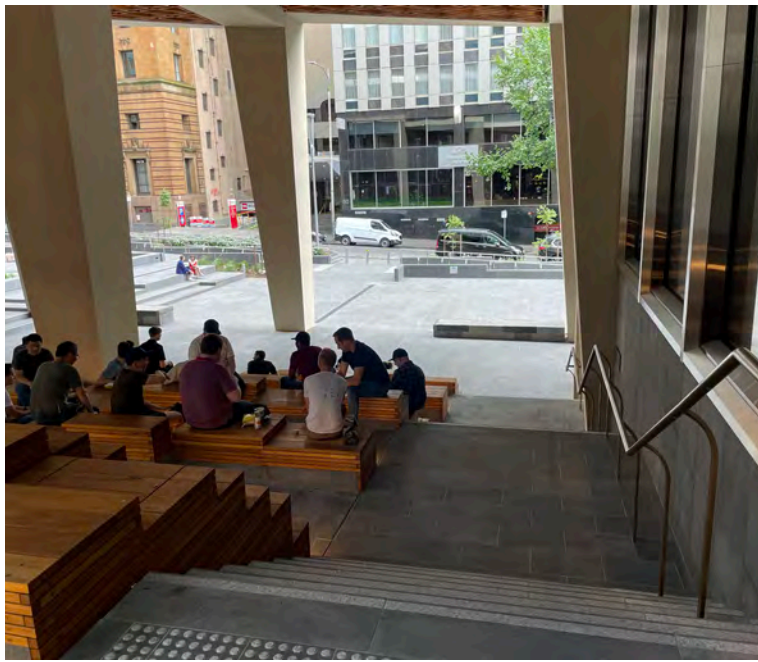
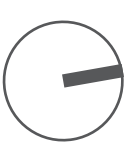


Image:
Woods Baggot,
Collins Arch, VIC

Date	Rev. Description	Rev
07/05/21	Issue for DRAFT SSDA	A
18/05/21	Issue for SSDA	B
13/08/21	Issue for SSDA - Response to Submissions	C



Servery and COLA Areas



Open Play Space



Image:
Scale Architecture, Australia Street
Infants School, NSW



Image:
ASPECT, Marrickville



Image:
Melbourne Queen Victoria Gardens
Victoria, Melbourne



Image:
LSA Erskineville
Primary School, NSW

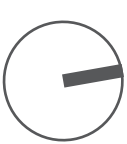


Image:
Children First
Pre-School,
Blacktown, NSW



Image:
McGregor Smith,
Marlborough
Primary School ,UK

Date	Rev. Description	Rev
07/05/21	Issue for DRAFT SSDA	A
18/05/21	Issue for SSDA	B
13/08/21	Issue for SSDA - Response to Submissions	C



Outdoor Learning



Games Court



Image:
RB Landscapes,
St Macartans PS, VIC



Image:
Scotch Oakburn
College, Tas



Image:
Tyrrell Studio,
Anzac Park
Public School, NSW



Image:
AHR, Front Street
Primary School, UK



Image:
Redding School of
Arts, USA



Image:
Peter Elliot
Architecture, RMIT, VIC

Date	Rev. Description	Rev
07/05/21	Issue for DRAFT SSDA	A
18/05/21	Issue for SSDA	B
13/08/21	Issue for SSDA - Response to Submissions	C



Passive Landscape



Active Informal Open Space



Image:
EJE Architecture Ballina
Coast High School, NSW



Image:
TCL, Melbourne
Girls Grammar
School, VIC



Image:
Encounter Lutheran
College, SA



Image:
Penrhos College,
Como, WA

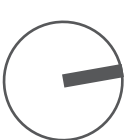


Image:
Heathfield Primary
School, SA



Image:
Coleridge Primary
School, London

Date	Rev. Description	Rev
07/05/21	Issue for DRAFT SSDA	A
18/05/21	Issue for SSDA	B
13/08/21	Issue for SSDA - Response to Submissions	C



Onsite Carpark and Vehicle Drop off Area



Perimeter Landscape Planting



Image:
EJE Architecture Ballina
Coast High School, NSW

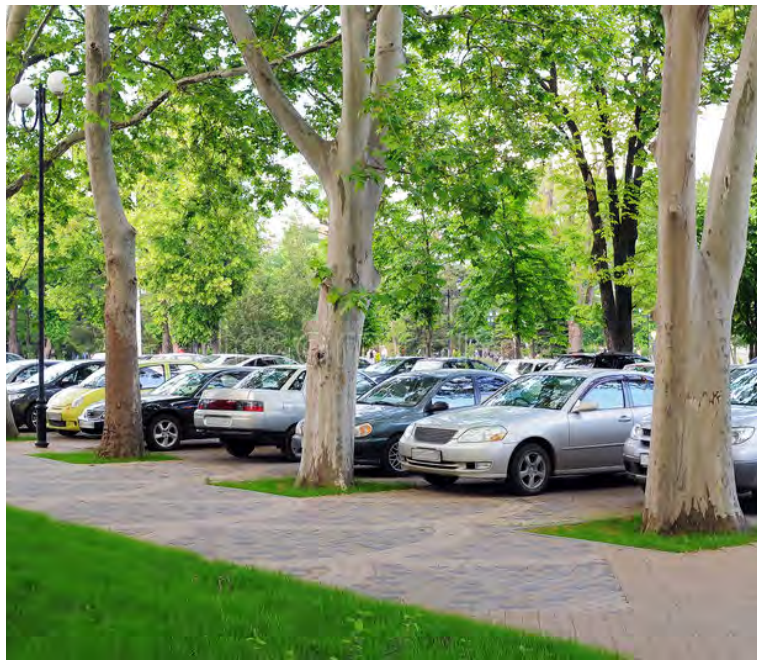


Image:
OCULUS, Cardinal
Freeman Village, NSW



Image:
Sam Cox
Landscapes,
Curlewis, VIC



Image:
Clermont Park
Edmondson Park, NSW

Date	Rev. Description	Rev
07/05/21	Issue for DRAFT SSDA	A
18/05/21	Issue for SSDA	B
13/08/21	Issue for SSDA - Response to Submissions	C



Indicative Materials

Fence & Walls



2.15m Security Perimeter Fence



Bastille Fence



Internal Balustrading



Concrete Retaining Walls



Sports Court Fencing

Furniture



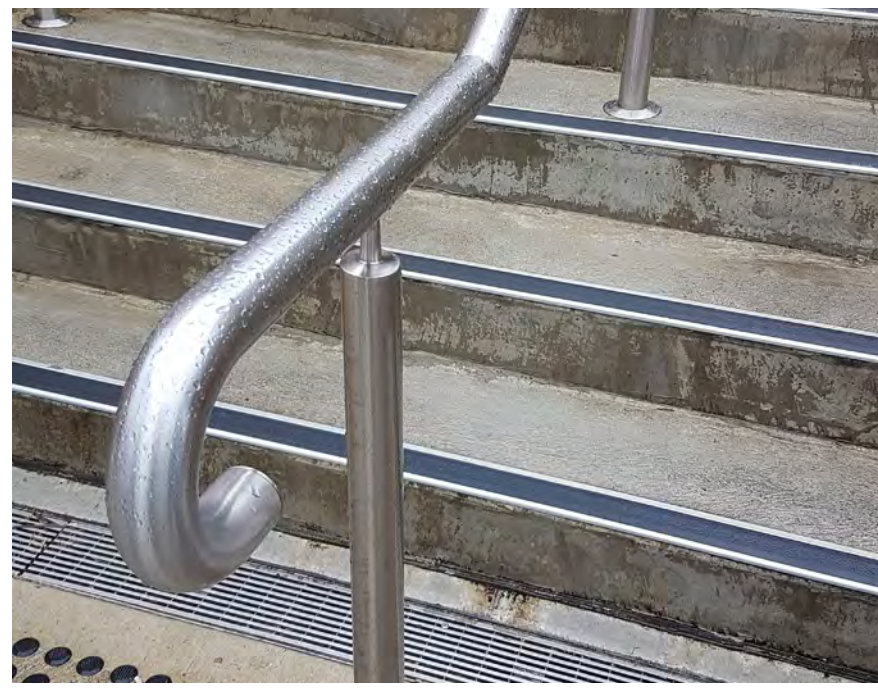
Concrete Bench



Sandstone Bench



Insitu Bleachers

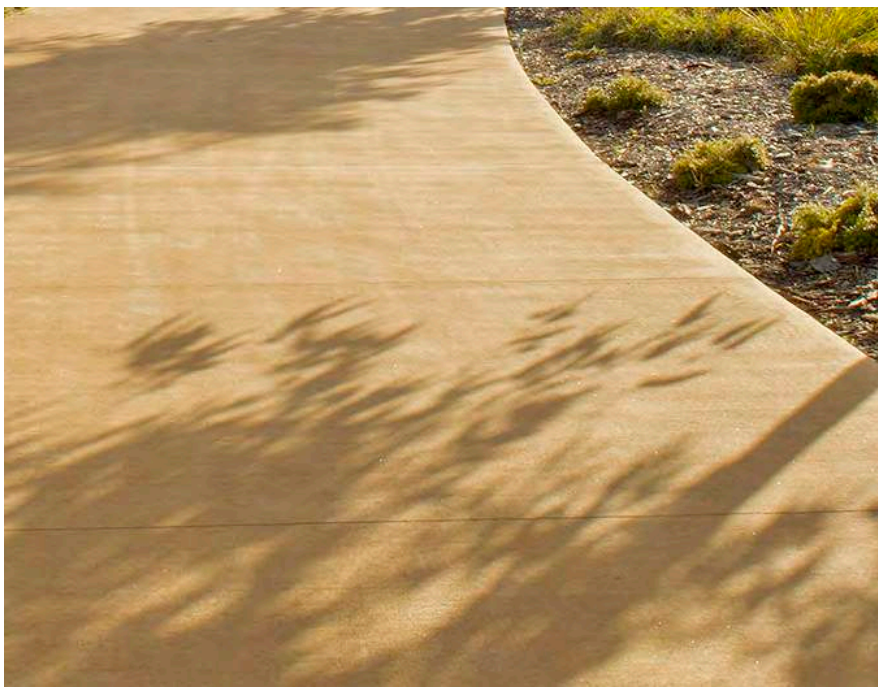


Stainless Steel Handrails to AS1428

Paving



Insitu Concrete



Coloured concrete



Decomposed Granite



Brick Paving



Coloured Asphalt



Aboriginal Interpretation in Paving

Softscape



Mounding Planting



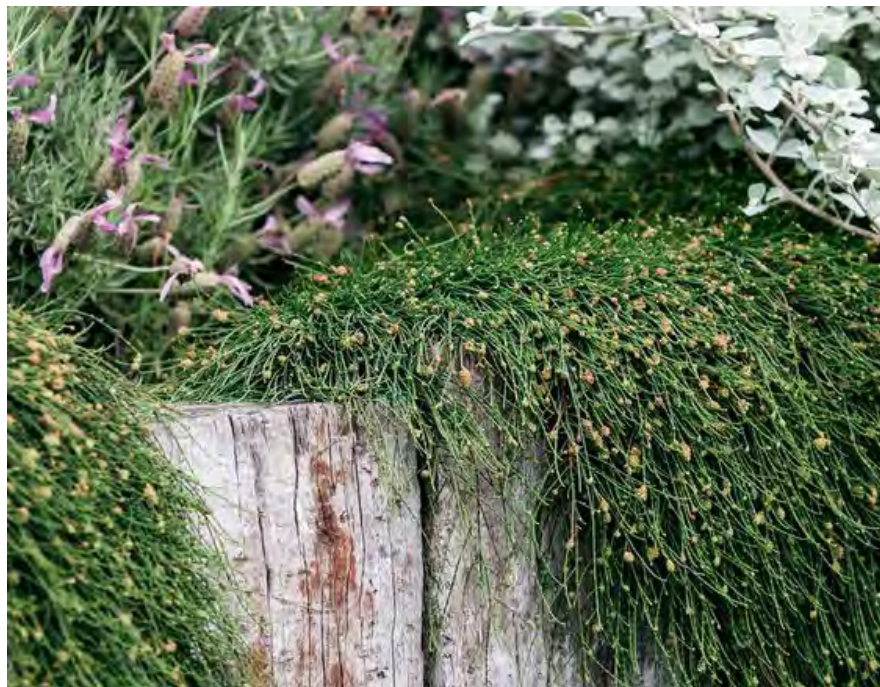
At Grade Planting



Large Active Lawn



Linear Tree Planting



Layered, Cascading Planting

Indicative Tree Schedule

Central and feature planting

Species	Common Name	Mature Height	Mature Spread
Backhousia citriodora	Lemon scented myrtle	8m	4m
Brachychiton acerifolius	Illawara flame tree	20m	10m
Elaeocarpus reticulatus 'Prima Donna'	Blueberry Ash	6-8m	2-4m
Pyrus calleryana 'Capital'	Ornamental pear	11m	3m
Tristaniopsis luscious	Luscious water gum	6m	4m
Waterhousia floribunda	Weeping Lilly Pilly	12m	10m
Total central and feature trees: 62			



Brachychiton acerifolius



Backhousia citriodora



Tristaniopsis luscious



Waterhousia floribunda



Pyrus calleryana 'Capital'

Perimeter planting

Species	Common Name	Mature Height	Mature Spread
Angophora floribunda	Rough Barked Apple	15m	10m
Brachychiton populneus	Kurrajong Tree	10m	10m
Callistemon salignus	White weeping bottlebrush	8m	5m
Eucalyptus longifolia	Woollybutt	25m	15m
Eucalyptus moliuccana	Grey box	25m	15m
Eucalyptus sideroxylon	Mugga Ironbark Gum	30m	10m
Lophostemon confertus	Brush box	15m	10m
Melaleuca linariifolia	Tea tree	10m	4m
Total perimeter trees: 58			



Angophora floribunda



Brachychiton populneus



Callistemon salignus



Eucalyptus sideroxylon



Melaleuca linariifolia

Total proposed trees 120



Date	Rev. Description	Rev
07/05/21	Issue for DRAFT SSDA	A
18/05/21	Issue for SSDA	B
04/08/21	Issue for information	C
13/08/21	Issue for SSDA - Response to Submissions	D
18/08/21	Issue for SSDA - Response to Submissions	E

Indicative Planting Schedule

Feature and Embankment Planting

Species	Common Name	Mature Height	Mature Spread
Callistemon 'Little John'	Dwarf Bottlebrush	1m	1m
Ctenanthe 'Silver-Maroon'	Never-never plant	0.5m	0.5m
Dianella caerulea	Paroo Lily	0.5m`	0.5m
Doryanthes excelsa	Gynea Lily	1.0m	1.0m
Echinacea purpurea	Purple Cone Flower	0.6m	0.5m
Gardenia radicans	Dwarf Gardenia	0.5m	1.5m
Helianthus annuus	Common Sunflower	0.9m	1m
Hibbertia scandens	Climbing Guinea Vine	0.5m	3m
Lavandula dentata	French Lavender	0.8m	0.6m
Leptospermum Pink Cascade	Tea Tree Hybrid	1.2m	0.8m
Phormium tenax	'Bronze Warrior' Bronze Flax	2.0m	1.8m
Trachelospermum jasminoides	Star Jasmine	0.2m	2.0m



Banksia spinulosa



Dichelachne micrantha



Lomandra multiflora



Indigofera australis



Ozothamnus diosmifolius

Cumberland Plain Planting

Species	Common Name	Mature Height	Mature Spread
Banksia spinulosa	Hairpin Banksia	1.5m	0.8m
Cymbopogon refractus	Barbed Wire Grass	1m	0.8m
Dichelachne micrantha	Short Hair Plume Grass	0.4m	0.4m
Grevillea juniperina	Grevillea sp.	0.5m`	0.5m
Grevillea sericea	Grevillea sp.	2m	2m
Doryanthes excelsa	Gynea Lily	1.0m	1.0m
Indigofera australis	Australian Indigo	1.5m	1.5m
Juncus usitatus	Common Rush	0.8m	0.8m
Lomandra filiformis	Wattle Mat-rush	0.5m	0.5m
Lomandra multiflora	Many flowered Mat-rush	0.8m	0.3m
Ozothamnus diosmifolius	Rice Flower	0.5m	0.5m
Themeda triandra	Kangaroo grass	1.2m	0.8m
Wahlenbergia gracilis	Tea Tree Hybrid	0.8m	0.5m



Callistemon 'Little John'



Ctenanthe 'Silver-Maroon'



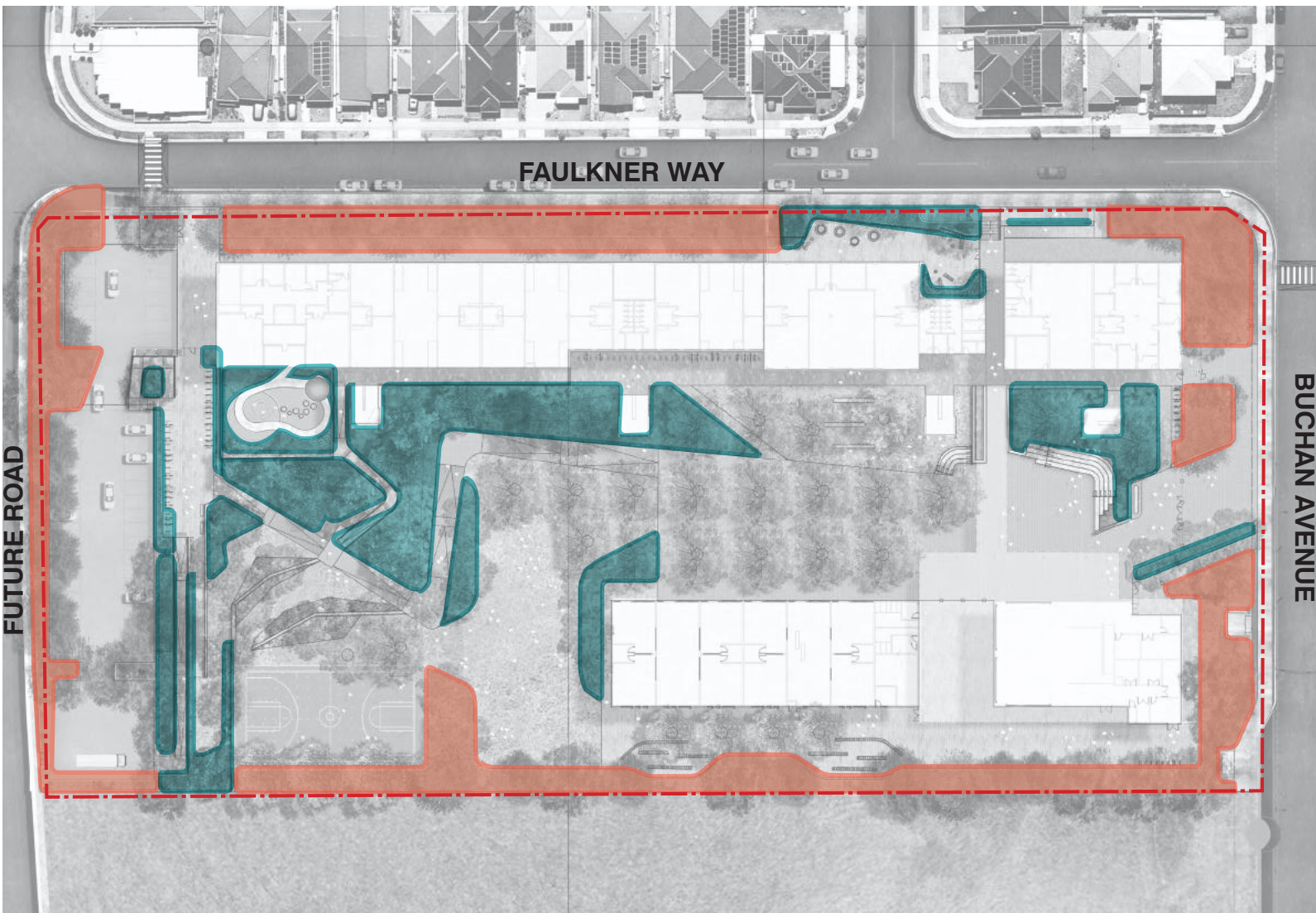
Dianella caerulea



Doryanthes excelsa



Echinacea purpurea



Helianthus annuus



Hibbertia scandens



Lavandula dentata



Leptospermum Pink Cascade



Trachelospermum jasminoides

Date	Rev. Description	Rev
18/05/21	Issue for SSDA	A
13/08/21	Issue for SSDA - Response to Submissions	B

scale:	n/a	drawn by:	CM/ZW	LA-W-REP-	
job no.:	S21-008	checked:	KS	308-A	B
date:	11/06/21				

Indicative Planting Schedule

Indigenous Food Planting

Species	Common Name	Mature Height	Mature Spread
Backhousia citriodora	Lemon Scented Myrtle	8m	4m
Citrus australasica	Finger Lime	4m	3m
Davidsonia jerseyana	Davidson Plum	8m	4m
Sambucus australasica	Yellow Elderberry	4m	3m
Hibiscus sabdariffa	Rosella	2m	1m
Platysace deflexa	Youlk	0.4m	1m
Apium annuum	Sea Celery	0.5m	0.5m
Mentha australis	River Mint	0.5m	1m
Kunzea pomifera	Muntries	0.3m	2m



Sambucus australasica



Hibiscus sabdariffa



Davidsonia jerseyana



Menthus australis



Kunzea pomifera

International Food Planting

Species	Common Name	Mature Height	Mature Spread
Beta vulgaris	Beetroot	0.5m	0.3m
Citrus reticulata 'imperial'	Dwarf Mandarin	2.5m	2m
Pisum sativum var. saccharatum	Sugar Snap Pea	1.5m	1.5m
Beta vulgaris ssp. vulgaris 'rainbow'	Rainbow Silverbeet	0.4m	0.3m
Salvia officinalis	Sage	0.8m	0.5m
Thymus vulgaris	Common Thyme	0.3m	0.5m
Solanum lycopersicum 'totem'	Tomato Totem	1m	0.5m
Ocimum basilicum anise	Thai Basil	0.75cm	0.5m
Capsicum annuum 'redskin'	Red capsicum	0.3m	0.5m



Beta vulgaris ssp. vulgaris 'rainbow'



Thymus vulgaris



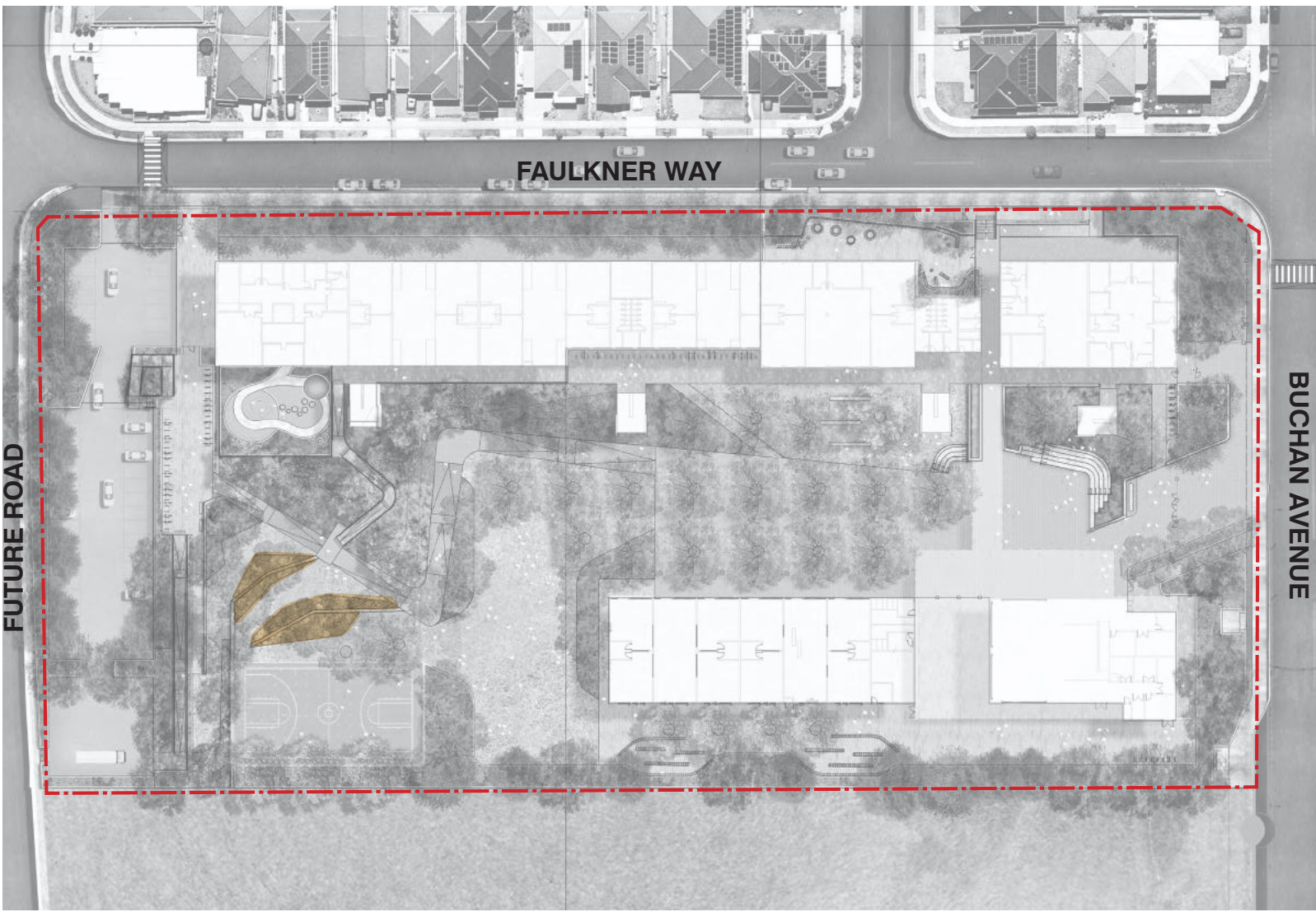
Solanum lycopersicum 'totem'



Citrus reticulata 'imperial'



Capsicum annuum 'redskin'



Date	Rev. Description	Rev
13/08/21	Issue for SSDA - Response to Submissions	A

scale:	n/a	drawn by:	TC	LA-W-REP-309-A	A
job no.:	S21-008	checked:	KS		
date:	11/06/21				

Planning Secretary's Environmental Assessment

Items to Address	Design Reponse
4. Tree Removal and Landscaping	
Provide a detailed site-wide landscape strategy that:	
Details the proposed site planting, including location, number and species of planting, heights of trees at maturity and proposed canopy cover	The planting type locations, species and heights at maturity have been included in the Indicative Plant Schedule. The canopy cover target for the proposed site is 40%.
Considers equity and amenity of outdoor play spaces, and integration with built form, security, shade, topography and existing vegetation	1. The design has responded to EFSG requirements for open play space (10m2 per student) whilst accommodating a variety of open space typologies 2. The landscape responded to the built form through the allowance of obstacle free pedestrian movement along the building front, spill out areas and clear access corridors from building entrance points towards open space and function outdoor areas 3. Security has been integrated into the design through perimeter fencing which allows for seperate School and Community access points to accommodate out of hours use of the hall 4. The proposed design has achieved 40% canopy cover to meet SDRP requirements and provide shade in open space areas. 5. The vegetation on site is scarce and pre-existing trees have been removed leaving an open grass area
Demonstrate how the proposed development will:	
Contribute to long term landscape setting in respect of the site and the streetscape	The design has focused on capturing a natural landscape setting which reflects the Cumberland Plain Woodland character of the site. Endemic vegetation along perimeter edges will create a visual and ecological corridor connection to Clermont Park and the Reserve. Through the introduction of Cumberland Plain Woodland into the landscape the design responds symbolically to the living and cultural heritage of the site and connection to country. The main access gateway into the site along Buchan Avenue provides a clear visual connection to the street front and Clermont Park. Perimeter planting creates a buffer zone and streetscape setting for the school
Mitigate the urban heat island effect and ensure appropriate comfort levels on-site.	The planting strategy is based on creating a green and coherent network of spaces which provide shelter from the sun, reduction in heat temperatures and a comfortable microclimate environment for students. Diversity and distinctive planting typologies contribute to the relationship to functional areas. Trees, Shrubs and groundcover create the three layers of plantng; Trees provide shade, shrubs and groundcover mitigate surface heat and create a cooling effect in the landcape. Air pollution reduction and water management are additional desired outcomes.
Contribute to objectives to increase urban tree canopy cover; A detailed landscape plan prepared by a suitably qualified person	The design has achieved the required 40% canopy coverage to meet Greener Places canopy cover requirements. A tree canopy cover strategy plan has been provided as part of the SSDA Landscape drawings