

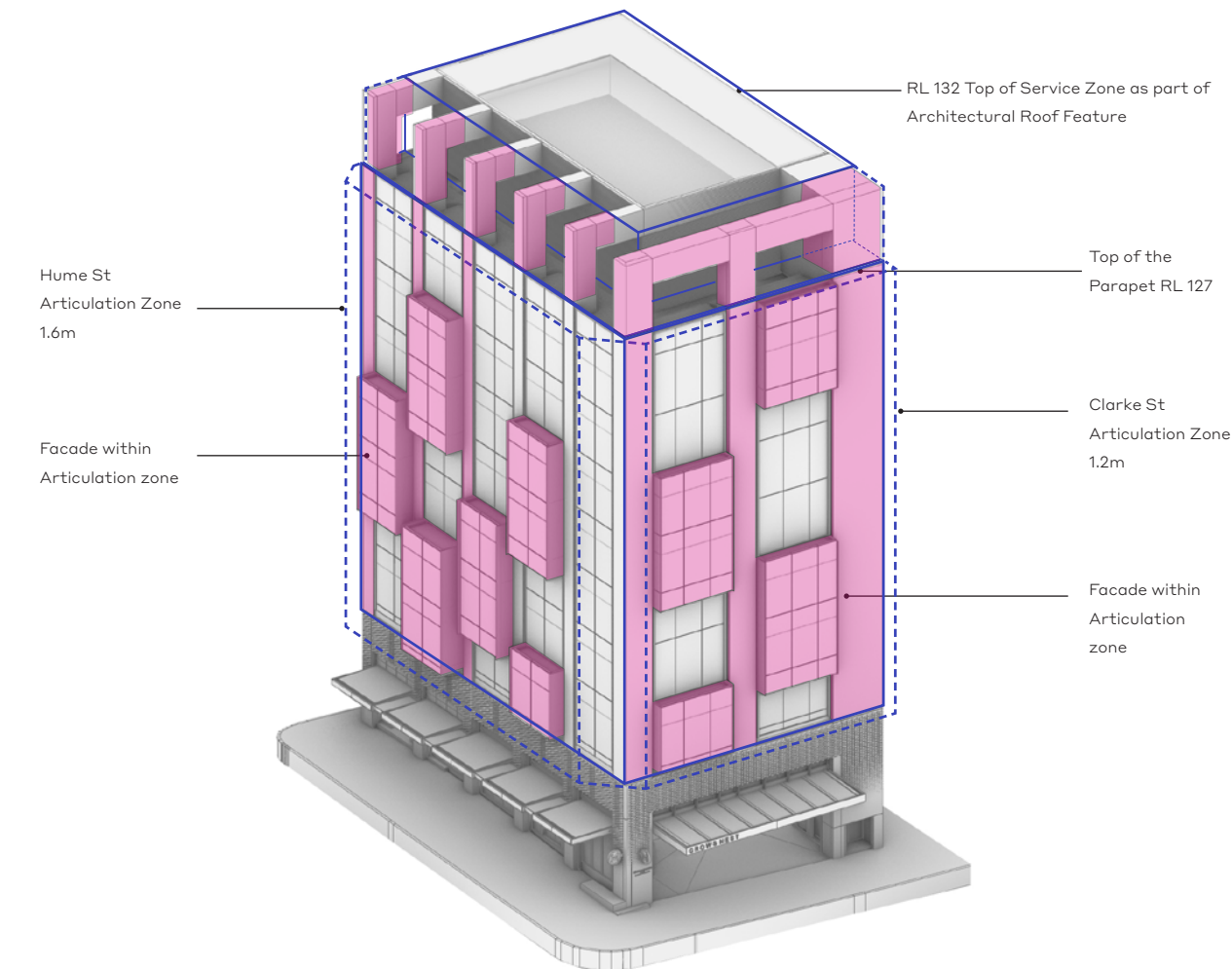
03.3 Articulation Zone

The Concept SSD approval (SSD 9579) includes articulation zones to Hume Street and Clarke Street elevations to allow building design to express architectural features beyond the street set back.

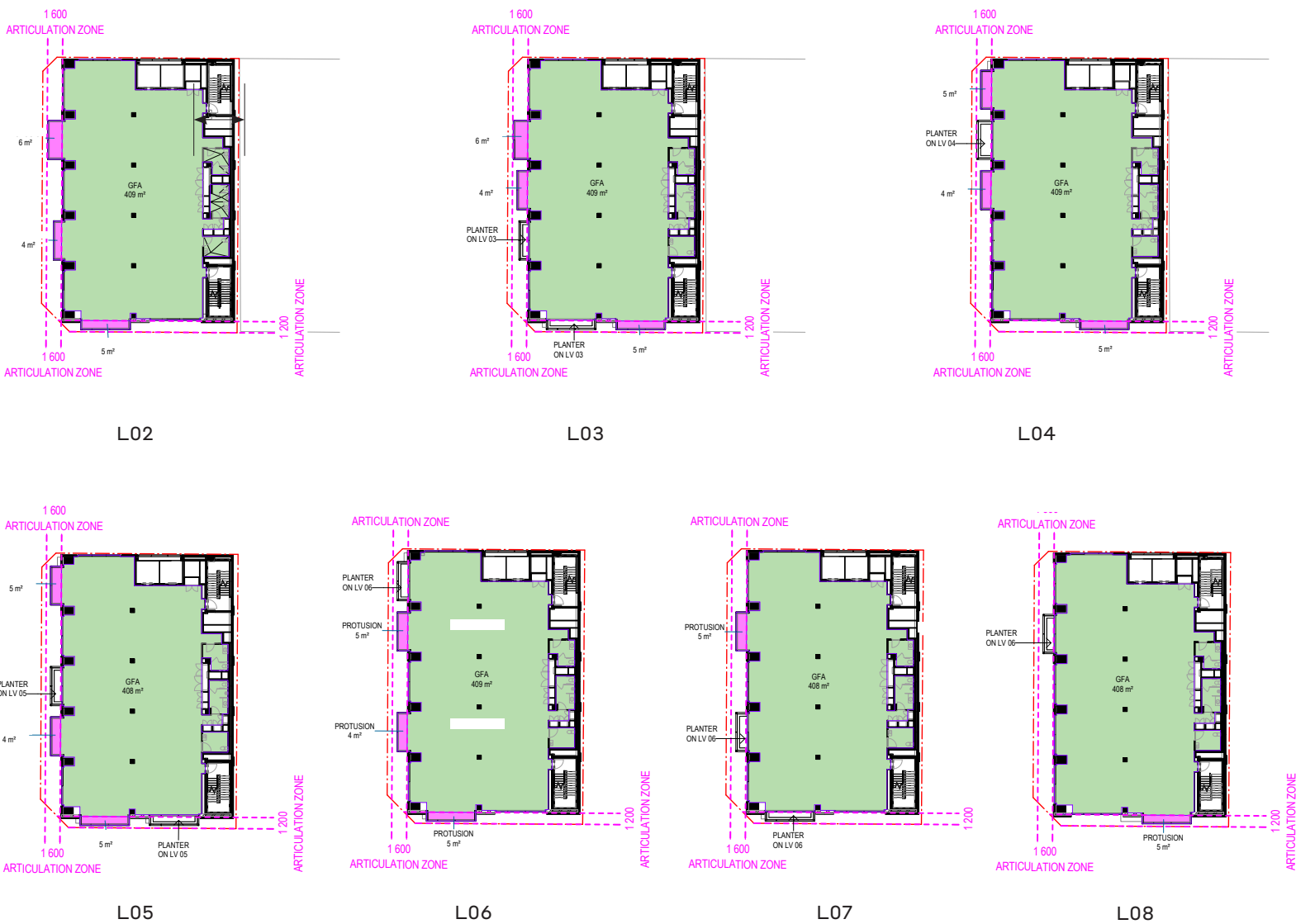
The design of Site C OSD utilises these zones to articulate the facades to create engaging and dynamic architectural expressions to providing visual interests to the streetscapes.

The total GFA contained within the articulation zones is 81 m² which is 2.5% of the total OSD levels GFA. The area diagrams show GFA of the facade within the articulation zone.

The total built volume (protrusion) of the façade contained within the articulation zone is 592.83m³, which equates to 19.9% of the total volume. The extent of the volume within the articulation zone is shown in pink in the diagram below. In addition, no GFA is provided within the articulation zone above RL 127.



Facade protrusion within Articulation Zone - Axonometric SE



Total Articulation Zone Volume	2,973.6m ³
Total Protrusion Zone(built volume) Volume	592.83m ³

Total Percentage of built voume within arctication zone	19.9%