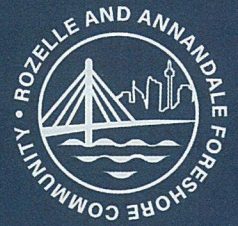
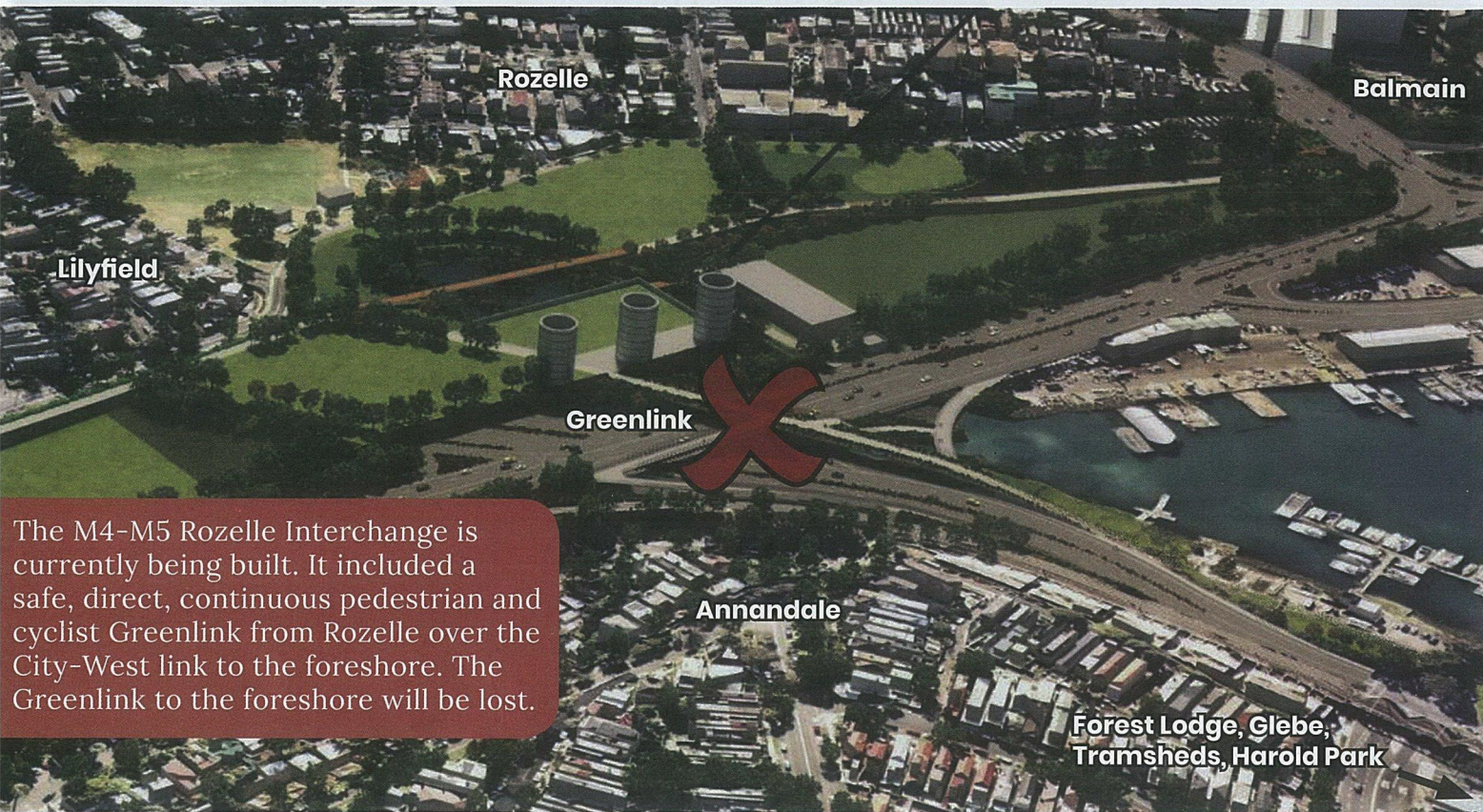


ROZELLE BAY

GREENLINK LOST



facebook.com/foreshorecommunity



The M4-M5 Rozelle Interchange is currently being built. It included a safe, direct, continuous pedestrian and cyclist Greenlink from Rozelle over the City-West link to the foreshore. The Greenlink to the foreshore will be lost.

The Greenlink is now being cut from the foreshore to fit a car overpass into the Rozelle Interchange



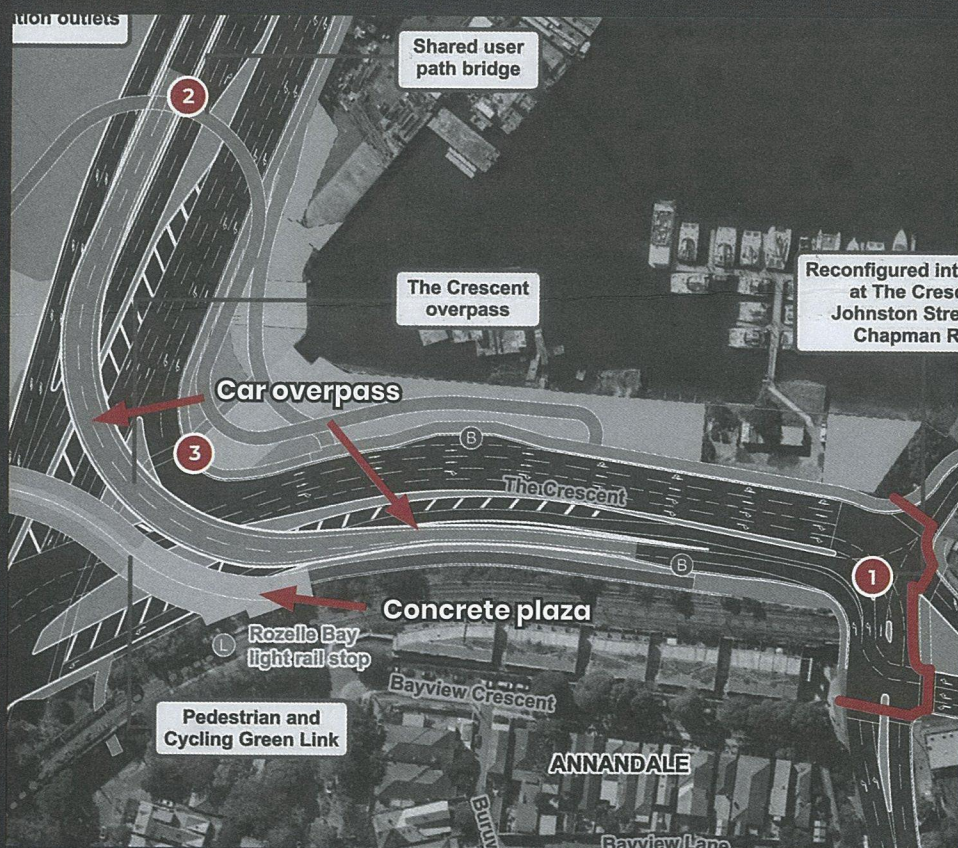
There is an opportunity to change this design — write a submission by 18 September and demand an alternate design to keep the Greenlink.

WHAT'S HAPPENING?

RMS have released 'M4-M5 Link MOD 2', a modification to the approved design. The modification fails those who access the foreshore on foot, by bike, pushing prams and chasing scooters.

It has compromised people-oriented design principles — forcing pedestrians onto busier intersections, around longer, steeper concrete bridges and splitting the community from the foreshore.

WHAT'S COMING WITH MOD 2?



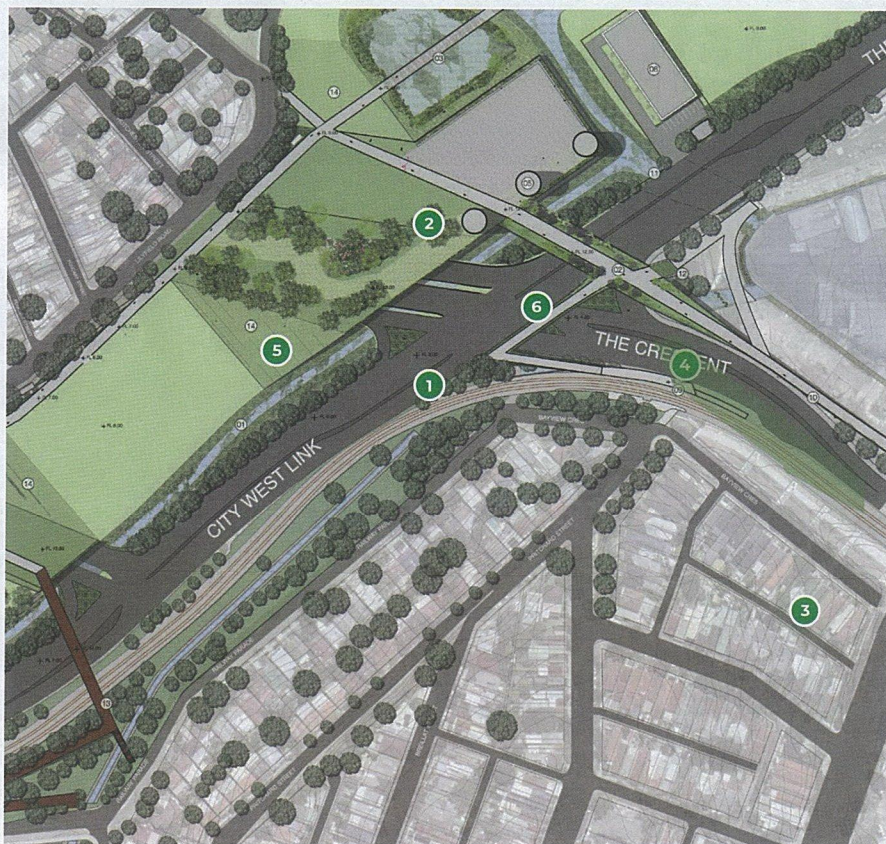
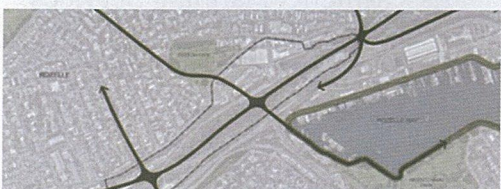
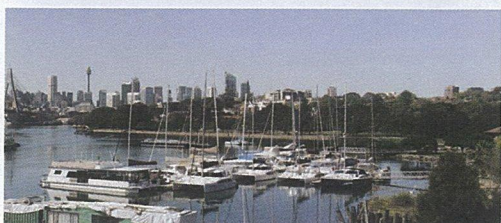
EVERYDAY IMPACTS

1 How will you, your school or your children navigate four road crossings at The Crescent and Johnston street?

2 Can you manage the long, indirect walk over the concrete footbridge from Rozelle to the water?

3 How will you feel cycling across a 120m intersection and in front of a three lane tunnel to reach Glebe Foreshore?

WHAT WAS PROMISED?



WE WANT RMS TO PUT PEOPLE BACK INTO THE PLAN

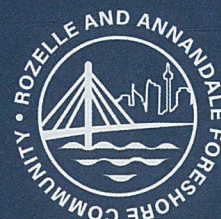
MAP	WHAT WE LIKED ABOUT THE APPROVED DESIGN	APPROVED	MOD 2
1	Safe, direct cycling/pedestrian access from Annandale to the foreshore above the intersection	✓	✗
2	Direct access from Rozelle and Lilyfield to the Foreshore - via the Greenlink	✓	✗
3	Maintained right turn from Johnston St into The Crescent	✓	✗
4	Shared user pathways considerate and connected into the Bays Precinct Master Plan	✓	✗
5	People-oriented design principles from the approved Urban Design and Landscape Plan	✓	✗
6	Connectivity between the light rail, cycleways, future Metro West and ferry wharf	✓	✗

IT'S NOT TOO LATE!

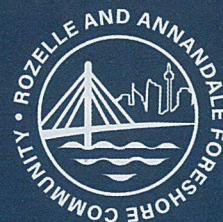
**WE HAVE ONE CHANCE TO INSIST RMS REDESIGN THE
CAR OVERPASS, GREENLINK AND TRANSPORT LINKS.**

**MAKE A SUBMISSION
BEFORE 18 SEPTEMBER**

See back page for details



DON'T DELAY! SUBMIT TODAY!



HOW TO MAKE YOUR SUBMISSION



SUBMIT ONLINE

RMS are receiving online submissions. We suggest writing your submission first then copy/pasting or attaching a file.

Visit the RMS submission page rebrand.ly/mod2-submission



BY POST

Use the attached proforma letter adding your specific concerns and requests and push RMS engineers and project team to look at alternate design options. Please add a personal comment to add weight to the submission.

Mail to: Director, Transport Assessments Planning Services, Department of Planning, Industry and Environment
App No. SSI 7485

GPO Box 39
Sydney, NSW, 2001

**WE HAVE ONE CHANCE TO INSIST RMS REDESIGN THE
CAR OVERPASS, GREENLINK AND TRANSPORT LINKS.**

MAKE A SUBMISSION BEFORE 18 SEPTEMBER



HOW TO HELP

Keep updated and spread the word via Facebook.
facebook.com/foreshorecommunity

Rozelle and Annandale Foreshore Community is a group of local residents passionate about putting people and communities at the centre of public infrastructure projects.

Contact us via email: foreshorecommunity@gmail.com

All artists impressions sourced from original M4-M5 determination and Mod 2 documents.
Notes and alterations made for information purposes for the public.