

Farm 132 Hanwood MI drainage channel flooding 1978



Looking west along Farm 132 driveway to Kidman Way Driveway to east from Farm 132 Kidman Way entrance

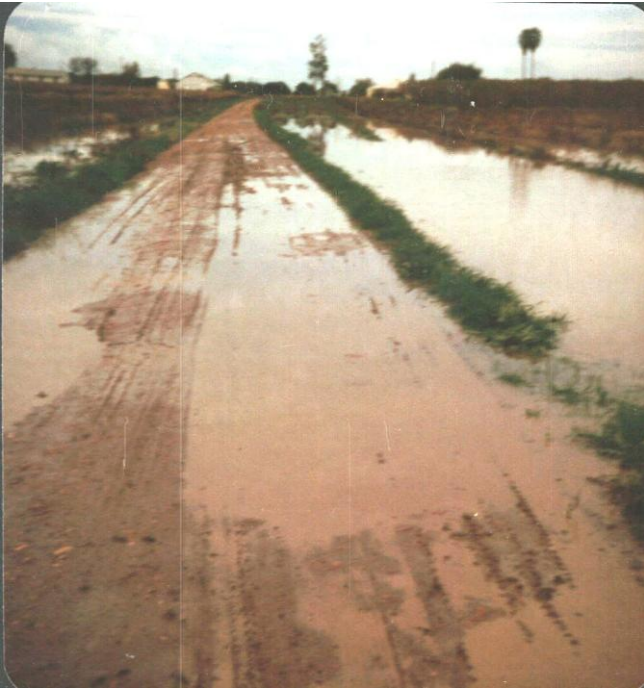


Flooding south of Farm 132 driveway looking eastwards



Inside Farm 132 entrance from Kidman Way - Bartter laying sheds in background

Farm 132 Hanwood MI drainage channel flooding 1978



Driveway from Farm 132 Kidman Way entrance



Flooding along north side of Farm 132 driveway



MI drainage channel - view from Farm 132 west to south west of Farm 132



MI drainage channel at Farm 132 Kidman Way entrance

Farm 132 Hanwood MI drainage channel flooding 1978



MI drainage channel - view from Farm 132 entrance to south. Kidman Way on right



Farm 132 flooding along western boundary



Bridge at Farm 132 entrance over MI drainage channel



View to south west of Farm 132 from Kidman Way entrance

Farm 132 Hanwood MI drainage channel flooding 1978



View to north east from Farm 132 entrance includes now demolished Bartter laying sheds



Flooded south west corner of Bartters' farm Lot 2088DP720206 from Kidman Way