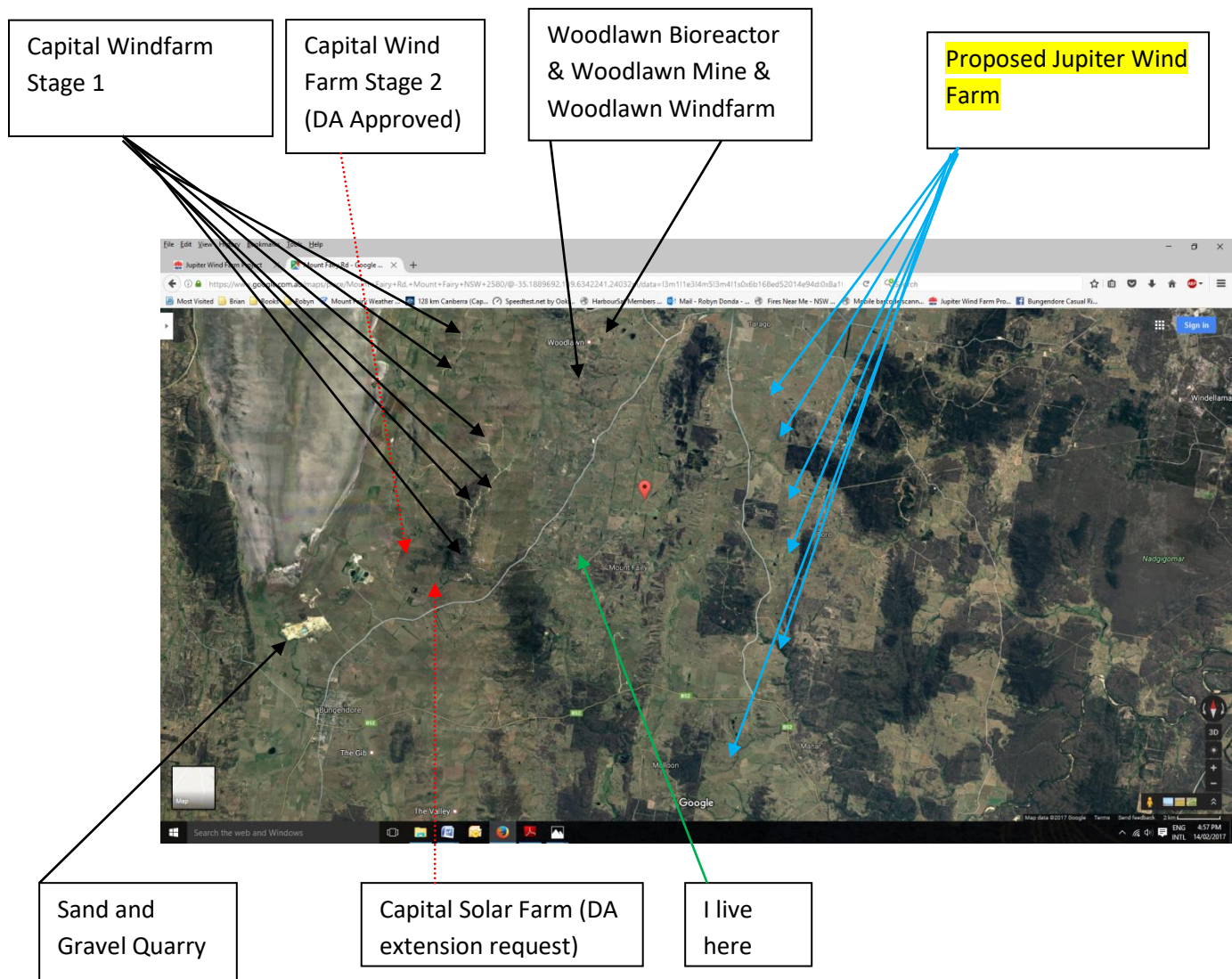


Comments – Cumulative Impact – Industrial Occupation.

- I do not wish to be located between 3 wind farms, with the closest wind turbine at the Capital Windfarm approx 5kms away, and the nearest Jupiter Wind turbines approx 8 kms away with Woodlawn Wind Farm slightly further. The Capital Wind Farm (located to my East through to NNE) has 67 turbines, Woodlawn (NNE – N) has 23 turbines and if Jupiter goes ahead, 88 turbines on my NNE thru to SE. That is 178 industrial turbines around me in an arc! There is also the Development Application approved for Capital Wind Farm Stage 2 (currently being extended) and Capital Solar Farm. That could mean up to 200 turbines in the area!



Comments – Inappropriate Location of WTG's amongst small acreage properties.

- The road from Tarago to the Kings Highway is populated within rural residential small acreage properties. The area to the West of Tarago Road (Capital and Woodlawn Wind farms) is less densely populated and has a Lake on it's Western Border.
- The area between the Wind farms (Mount Fairy Road – approx 10kms in length) is also medium density small acreage properties.
- Census data for the current populations/dwellings within Mount Fairy, Boro, Barnet, Manar & Tarago will be available in April 2017 from the Australian Bureau of Statistics and should be used in preference to old 2011 data. Many properties have been developed since 2011.
- I am opposed to this area becoming a junkyard of turbines, and as previously mentioned, believe a 3rd Windfarm will increase the chance of larger bushfires due to aerial support not being able to fly near turbines.
 - o If you overlay the maps of the Curandooley Fire, Boro Fire and Sandhills fire (plus Herberton Fire) provided in *"Response to 19.Jupiter Wind EIS_ Appendix N_ Bushfire Risk Assessment"* over the map above, and incorporate the dominant Westerly/North Westerly Winds, you will see how the Jupiter Wind Farm poses a threat to life and property. Particularly since Boro Road, Barnet Drive, Hazeldell Road and Duckfield Estate are single entry/exit roads.
 - o Aerial support (planes and helicopters) were required to help contain each fire mentioned above. EPYC should provide this map in their Bushfire Hazard Risk Submission so that the Department of Planning can clearly see the level of risk for this area.
- If the Jupiter Wind Farm is approved, it will be at the detriment of local developers. Being within a commute distance to both Canberra and Goulburn, this area is popular for subdivision and settlement. The amount of specialist jobs created by the Jupiter Windfarm will be less than the ongoing job opportunities provided by local developers through subdivision and building projects.
- The night time lights required for turbines by CASA (refer *"Response to 15.Jupiter Wind EIS_ Appendix J_ Aeronautical Assessment"*) will negatively impact 100's of households as will blade flicker (refer comments in *"Response to 17.Jupiter Wind EIS_ Appendix L_ Shadow Flicker and Blade Strike Assessment"*)
- Quite simply, the areas selected by the Jupiter Wind Farm for WTG's amongst small acreage properties are inappropriate and potentially dangerous to the region.