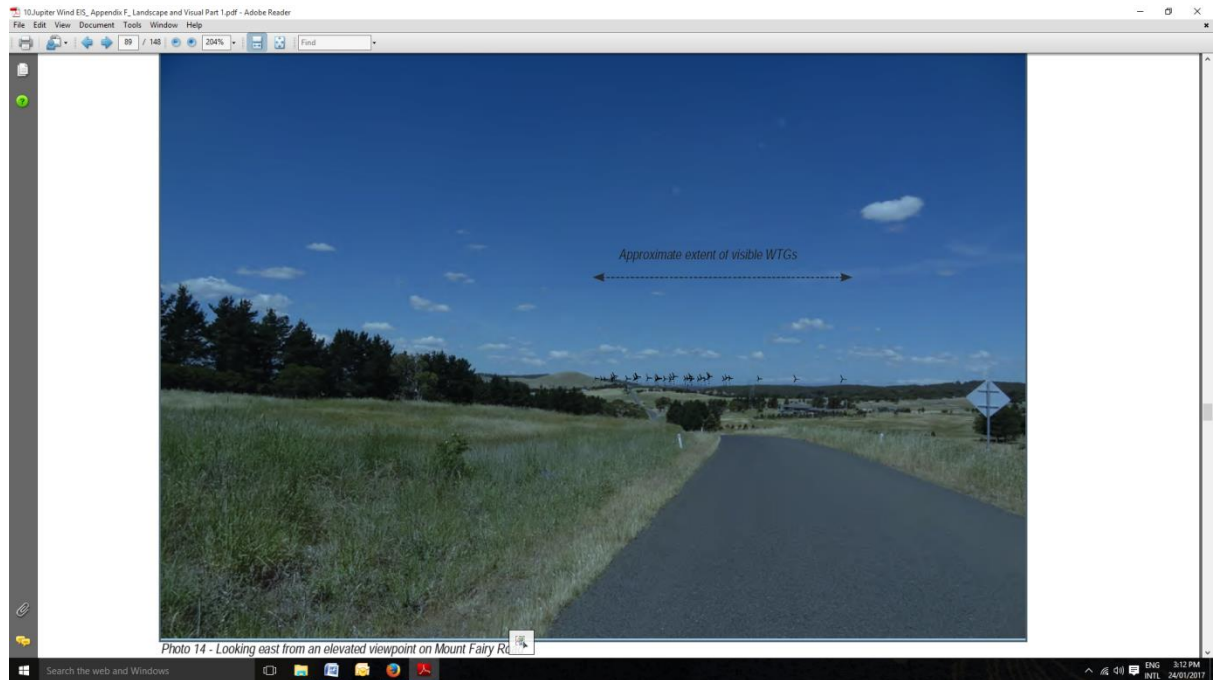


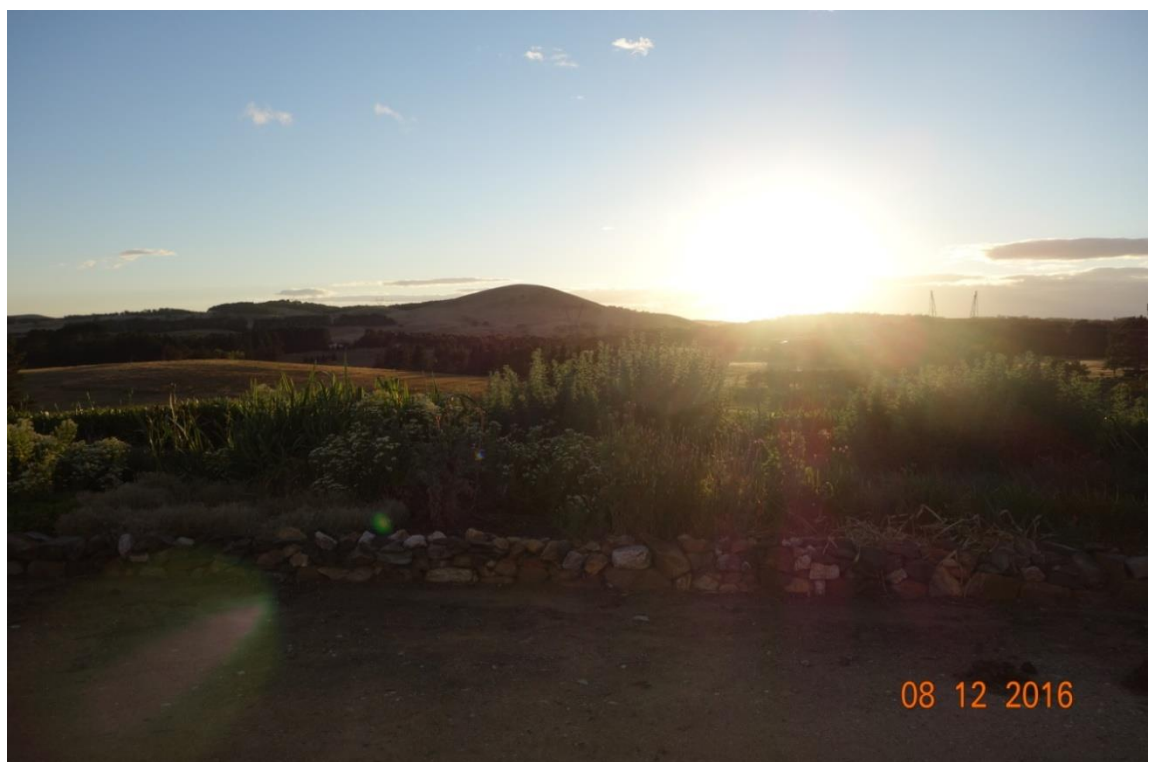
## Response to: Annex L - Shadow Flicker and Blade Glint Assessment for the Proposed Jupiter Wind Farm

**Comment.** Why is the title of this document “17.....Shadow Flicker and Blade Strike”, but the document “shadow flicker and blade glint”? Should bird/bat strikes be included here?

**Shadow Flicker:** The montage of Mt Fairy Road at Annex F : Landscape & Visual Impact Assessment Report S14-0147 Issue H Private Receptor Viewpoint 14 pp 88 shows turbines in the distance to the right hand side of Mount Fairy Trig Point.



This is where the sun rises for several months over Summer for residents along and adjacent to Mt Fairy Road. The following picture is my view. My household (and my 2 neighbours) were not included in the EPYC submission even though we were part of the 2011 census.



This picture is self explanatory. If we can see as many turbines as we are led to believe from the less than specific information that we have been provided with from Jupiter, then you can see that the sun is going to be shining through the blades towards us every morning and all we (and our neighbours) will see is flickering. At present we have no flickering. **How does Jupiter plan to alleviate this?**

**This is how I wake up in Summer. Door open to enjoy the overnight cool Easterly breeze, curtains open so they don't bang in the wind.**



My bedroom is on the second story. I do not want my balcony closed in, I do not want to keep the window/curtains closed overnight and have to use a fan and I don't want trees planted in my garden to spoil my view.

The following diagram shows my panoramic 180 degree view. The sun moves to the left as we approach the winter months. As you can see, we have full view of the sunrise throughout the year, Winter through to Summer. Turbines are likely to be visible along this area and I have requested for them to be shown.



Tarago

## SUMMARY

- It is important to note, that Wind Turbine Generators to the Left hand side of Mount Fairy Trig Point were not identified as part of Viewpoint 14 in EIS 10.Jupiter Wind EIS\_ Appendix F\_ Landscape and Visual Part 1 page 88. I have requested that the visual affect of all turbines 5kms south of Tarago be included in the previous diagram.
- If turbines are visible to the LHS of MT Fairy Trig, I strongly suspect, that due to my elevation, I and many of my neighbours along Mount Fairy Road (entry point from Tarago Road), will be **significantly affected** by blade flicker throughout the entire year. My house (and many neighbours) face this view. Jupiter's proposal to alleviate this is as follows:

*"If shadow flicker presents a problem, mitigation strategies to reduce the duration of shadow flicker experienced at a dwelling can include: the installation of screening structures or planting of trees to block shadows cast by the WTGs, the use of WTG control strategies which shut down selected WTGs when shadow flicker is likely to occur, or relocation of WTGs.*

Given I may see up to 79 turbines, and the installation of screening structure or planting of trees is not a suitable or acceptable option for me, can I suggest that the WTG's be relocated somewhere else, perhaps out in the desert?

**Can EPYC please show clearly how many turbines will be seen on the left hand side of Mount Fairy Trig point, and then identify the impact of shadow flicker on residents along Mount Fairy Road (plus offshoots) from the Tarago Road entry point as we have not been included in this report. I believe the impact may be significant on many of the houses shown below which shares views similar to mine.**

