



**NSW Police Force**

D/2017/2893

Department of Planning & Environment  
Industry Assessments  
GPO Box 39  
Sydney NSW 2001

Attention Ms Rebecca Sommer  
Senior Planner

**RE: Tweed Byron LAC input into the Secretary's Environmental Assessment Requirements (SEARS) and State Significant Development (SSD) application for a permanent cultural events site at North Byron Parklands, Yelgun.**

Dear Ms Sommer

Thank you for providing opportunity for the NSW Police Force to provide details of key issues impacting a request from North Byron Parklands for a State Significant Development (SSD) application in the Byron local government area, pursuant to Part 4 of the *Environmental Planning and Assessment Act 1979* (EP&A Act).

We note that the proposal involves the permanent use of the North Byron Parklands as a Cultural Events Site for up to 50,000 patrons per day.

We also note that North Byron Parklands site has current approval by the NSW Planning Assessment Commission (PAC) to use the site for cultural events up to a maximum of 35 000 people over a 5 year trial period (up until 2017).

During this trial period the site has been used specifically to hold large outdoor music festivals including Splendour in the Grass (SITG) and the Falls Festival. During this 5 year trial period the Tweed Byron LAC has been responsible for the policing response to events held at the site.

For 5 days from the 21 July 2016 to 25 July 2016 the SITG music festival was held on the site. This was the largest event held on the site to date. The event was sold out with capacity of 32 500 paying patrons per day of which we have been informed there were 20 100 campers. The site also houses a significant workforce of approximately 3500 and an undisclosed number of free ticket holders at any one time.

The NSW Police Force has conducted a post event review of SITG 2016. This review has highlighted the critical impact this event at current levels has upon the resources of the Tweed Byron LAC.

From a policing perspective a number of key issues were identified that should be considered for any EIS that proposes expansion of approvals to a capacity of 50 000 people.

**TWEED BYRON LOCAL AREA COMMAND**

52 Recreation Street, Tweed Heads NSW 2485

T 07 5536 0999 F 07 5536 0969 W [www.police.nsw.gov.au](http://www.police.nsw.gov.au)

TTY 02 9211 3776 for the hearing and speech impaired ABN 43 408 613 180

**TRIPLE ZERO (000)**

Emergency only

**POLICE ASSISTANCE LINE (131 444)**

For non-emergencies

**CRIME STOPPERS (1800 333 000)**

Report crime anonymously



## NSW Police Force

### • Safety and Security

- Significant adverse impact upon local policing response. At current levels of capacity TBLAC can not provide sufficient police to provide first response to the community at large and a satisfactory policing response to the festival.
- Crowd control – Significantly greater number of police than currently deployed are required to maintain and ensure patron safety at current crowd levels of patronage.
- Patron safety
  - Intoxication
    - SITG 2016 - 19 bars operating poses significant risk to patrons in monitoring and minimising harm. Difficulties are experienced by police in mitigating risk due to crowd numbers, lighting and site layout.
    - SITG 2016 was rated Extreme for Violence on ELORM this is the first time this event has attracted such a rating.
    - SITG 2016 - All aged event. Intoxicated minors identified. Detection of secondary supply and pre loading extremely difficult to prevent due to venue layout (including camping), venue lighting, numbers patrons vs RSA/police/security.
  - Consumption of illicit drugs
    - SITG 2016 saw 322 Drug Detections up from 188 in 2015.
      - Drug detection operation ran only during limited hours for 3 of the 5 days with an inability to cover all entry points to the festival
      - Drug dogs continually stood down because police tied up processing offenders.
      - Detections equated to one every 1 every 1.45minutes during the operation.
      - Detection of adult supplying illicit drug to 16yo female
      - 85 persons presented to on site medical facility for drugs/alcohol related complaints.
      - 1 patient transported by ambulance due to drug overdose
- On site access
  - SITG 2016 spine road was insufficient for emergency and service vehicle access.
- Lighting
  - Lighting between acts / stages and in the general festival / pedestrian areas is insufficient. Presents issue for patron safety and evacuation in particular of amphitheatre.
- Terrorism
  - National terrorism Threat level current PROBABLE

### TWEED BYRON LOCAL AREA COMMAND

52 Recreation Street, Tweed Heads NSW 2485

T 07 5536 0999 F 07 5536 0969 W [www.police.nsw.gov.au](http://www.police.nsw.gov.au)

TTY 02 9211 3776 for the hearing and speech impaired ABN 43 408 613 180

**TRIPLE ZERO (000)**

**POLICE ASSISTANCE LINE (131 444)**

**CRIME STOPPERS (1800 333 000)**

Emergency only

for non-emergencies

Report crime anonymously



**NSW Police Force**

- **Traffic Management**

- **Access / Egress**

- SITG 2016 experienced significant traffic issues.
    - About 1500hrs on the Friday vehicle queuing lasted for more than 2 hours. A South bound traffic queue of in excess of 1000m caused a delay of 20 minutes for road users on Tweed Valley Way (TVW). During this time, northbound traffic on TVW was also queued beyond the "Link Rd" roundabout. This resulted in scores of festival goers exiting vehicles (including shuttle busses) to make their way to the festival on foot in and around moving traffic. Vehicles performing illegal u-turns and in some cases ignoring traffic controllers.
    - SITG 2016 Experienced severe pedestrian safety issues.
      - At the conclusion of performances on Friday (early hours of Saturday morning) resulted in scores of festival day ticket holders spilling out onto TVW resulting in significant pedestrian safety issues. Pedestrians were walking and attempting to hitch-hike on the M1 at approximately 0130hrs on Saturday morning.
      - Festival goers were being dropped off on southbound carriageway of the M1 motorway. The queue on the Yelgun "Link Rd" overbridge and southbound on TVW was visible to motorists southbound on the M1 which resulted in passengers being released from vehicles on the M1. A handful of these people then chose to climb over the bridge railing near Yelgun Rd overpass and traverse down the steep embankment to get to Tweed Valley Way. This resulted in at least one injury requiring first aid.
    - 1500 on the Saturday afternoon where northbound traffic attempting to exit the M1 motorway at Yelgun were met with a queue which extended 150m past the start of the exit ramp. Traffic was queued in the shoulder causing some vehicles to brake and swerve in a dangerous manner. This queue dissipated at approximately 1630.
    - Significant traffic delays for bump out experienced
      - Reports of people sitting in cars on site for up to 6 hours.
      - Due to excessive delays in clearing the site the emergency vehicle access "Easy Street" was used until emergency services halted this. This was high risk and created further significant local traffic congestion.
      - Existing road network is incapable of disbursing extra vehicles from festivals when it meets holiday traffic on M1 motorway.
    - Traffic controllers employed by organisers were being ignored by patrons.
    - Inadequate signage for patrons
  - Illegal camping in rest areas – Yelgun rest stop.

**TWEED BYRON LOCAL AREA COMMAND**

52 Recreation Street, Tweed Heads NSW 2485

T 07 5536 0999 F 07 5536 0969 W [www.police.nsw.gov.au](http://www.police.nsw.gov.au)

TTY 02 9211 3776 for the hearing and speech impaired ABN 43 408 613 180

**TRIPLE ZERO (000)**

Emergency only

**POLICE ASSISTANCE LINE (131 444)**

For non-emergencies

**CRIME STOPPERS (1800 333 000)**

Report crime anonymously



## NSW Police Force

- **Emergency Management**

- There is no possibility of evacuating North Byron parklands within 8 hours at current capacity levels.
- Fire
  - Bushfire emergency evacuation plan utilises Neighbourhood Safer Place. Should such a plan be activated NB Parklands does not have any overhead cover from sun or provision for food if implemented for an extended period.
- Illness / Medical
  - Significant disease (diarrhoea) outbreak would require every available Ambulance to transport from site to hospitals including GC Uni hospital. NSW Ambulance would not have sufficient resources to meet transport needs due to existing operational requirements.

It is the view of the Tweed Byron LAC that the Department of Planning & Environment be made aware of the following key issues when considering the application for a permanent cultural events site at North Byron Parklands.

1. NSW Police resources will need to be dramatically increased at future events to mitigate the risks identified in this report.
2. That the road infrastructure be improved prior to any increase in numbers including consideration of constructing a Northern entry and transport hub linking to Wooyung Road.
3. Due to the emergency crowd crush situation at Falls Festival Lorne, Victoria it is the view of NSW Police Force that SafeWork NSW complete an audit of the venue encompassing access/egress to all stages in particular the amphitheatre to ensure that the risk of such an incident occurring at North Byron Parklands is mitigated.
4. That all the key issues raised in this report be addressed in any application to establish a Permanent Cultural Events Site at North Byron Parklands.
5. That no application for the permanent use of the North Byron Parklands as a Cultural Events Site for up to 50,000 patrons per day be approved until the above key issues are addressed.

Yours faithfully

**Brendon Cullen**  
Crime Manager, Tweed Byron LAC  
3 January 2016

### TWEED BYRON LOCAL AREA COMMAND

52 Recreation Street, Tweed Heads NSW 2485

T 07 5536 0999 F 07 5536 0969 W [www.police.nsw.gov.au](http://www.police.nsw.gov.au)

TTY 02 9211 3776 for the hearing and speech impaired ABN 43 408 613 180

**TRIPLE ZERO (000)**

Emergency only

**POLICE ASSISTANCE LINE (131 444)**

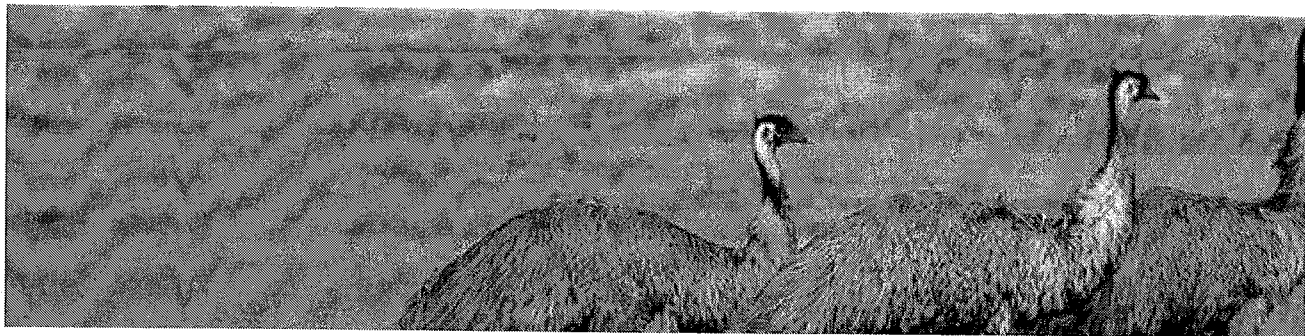
For non-emergencies

**CRIME STOPPERS (1800 333 000)**

Report crime anonymously



DONATE



CURRENTLY VIEWING: [Home](#) » [Cases](#) » [Past Cases](#) » [All Past Cases](#)

## Conservation of North Ocean Shores Inc v Byron Shire Council & Ors

May 2009

CONOS (Conservation Of North Ocean Shores Inc) represented by EDO NSW was successful in its Land and Environment Court challenge to the development consent for the Splendour in the Grass Music Festival.

The Chief Judge of the Land and Environment Court has found that Byron Shire Council acted outside of its power when it granted consent to Splendour in the Grass to hold a music festival on high conservation value lands north of Byron Bay.

A significant part of the land the subject of the development consent is zoned for habitat protection under the Byron Shire Local Environmental Plan. The Court found that the development is properly characterised as a temporary place of assembly which is a prohibited use in the habitat zone.

The habitat zoning on the land was put in place after a detailed Commission of Inquiry in 1998 that had before it scientific evidence of the significance of the wildlife corridor on the land. The corridor is a regionally significant wildlife corridor linking coastal ecosystems to world heritage hinterland ecosystems. The development would have seen substantial earth works on the land to accommodate the music festival including a 25 metre wide tunnel excavated through the wildlife corridor requiring the removal of native vegetation and wildlife habitats.



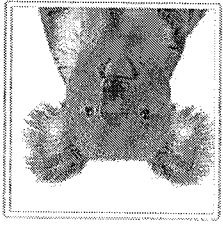
Home

About

Photos

CONOS Inc

@CONOSInc



Like

Message

Share

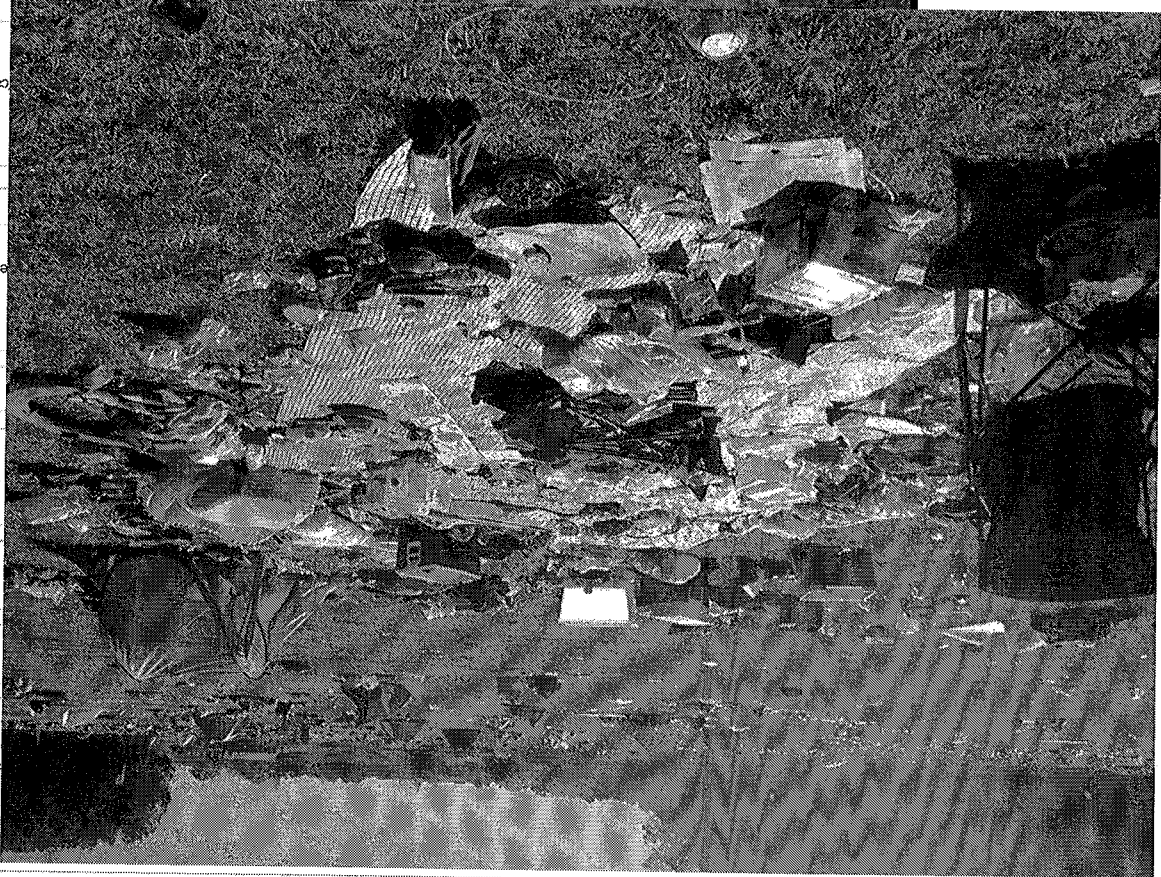
Sign Up

Log In

Forgot your account?


Email or Phone


Password




See all

Posts

- 


Dorrego Environment Watch Inc.  
Community
- 

Mulrummac Education  
Computer training school.
- 

Shara Community Gardens - Sou...  
Region
- People Also Like

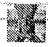
Like · Comment · Share


1 Like



Community Action Alliance for NSW  
3 October 2015 at 18:49  
Hi, CAAN has been a witness since August 2012 to what happens behind... See more

- Like · Comment · Share

1 Like
- 

Kathy Norrey-Fa  
See All  
along the  
culture ge  
See All  
problems  
1 · 23
- 

Joey Pa  
See All  
along the  
culture ge  
See All  
problems  
1 · 23
- Like this
- Call for

