

Monday, 16 December 2013

Mr Sam Haddad  
Director-General  
Department of Planning and Infrastructure  
23-33 Bridge Street  
SYDNEY, NSW 2000

By online submission

Attention: Ms Ingrid Ilias

Dear Ms Ilias,

**RE: Submission of the Sydney Cricket and Sports Ground Trust to the  
Public Exhibition of the CBD and South East Light Rail Project (SSI-6042)**

## 1. Introduction

The Sydney Cricket and Sports Ground Trust (the Trust) welcomes the opportunity to comment on the public exhibition of the Environmental Impact Statement (EIS) for the CBD and South East Light Rail Project (CSELR), a significant investment in public transport infrastructure by the NSW Government. As a key stakeholder, the Trust has been in ongoing consultation throughout the planning and design phases, and has worked with Transport for NSW (TfNSW) to establish its interests in the operation of the CSELR.

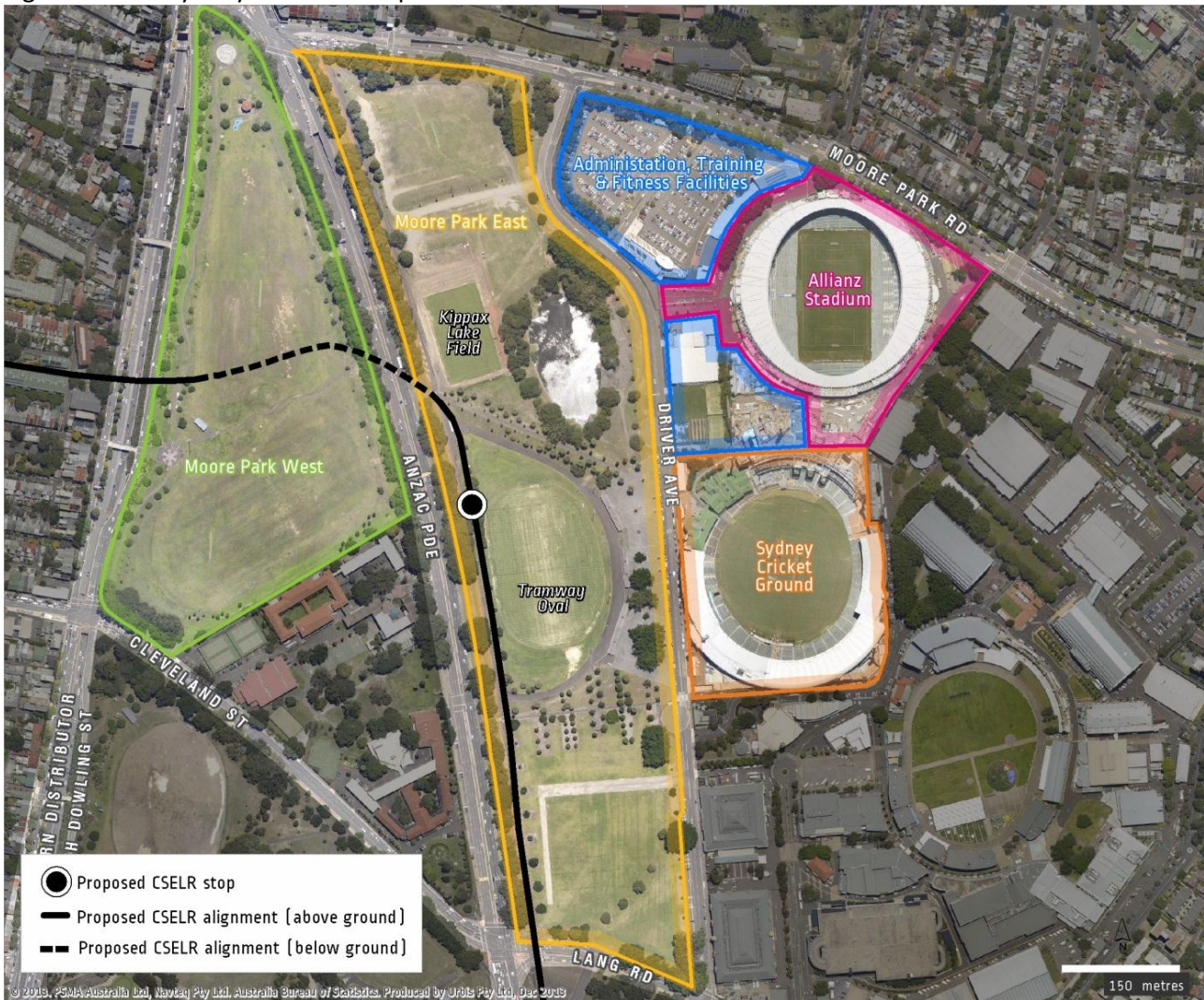
The Trust has reviewed the EIS documentation exhibited by the Department of Planning and Infrastructure (DP&I) and broadly supports the CSELR as a contribution to improved transport services in the area. However, the Trust seeks to identify key issues relating to both the construction and operation of the CSELR, and provide preferred alternatives which could result in an improved interface with the Moore Park Precinct. This submission provides:

- A description of the Precinct's function and layout;
- Specific comments on parts of the CSELR EIS, in particular:
  - The proposed location of the Moore Park Station and its integration with the Precinct;
  - The impact of construction on the Precinct;
  - The CSELR's consistency with the Trust's Master Plan for the Precinct;
  - The operational capacity of the CSELR during major events at Moore Park;
- A summary of recommendations that the Trust would seek to see addressed as part of the planning process.

## 2. The Trust and the Precinct

The Trust manages two of Sydney's most significant sporting venues, being the Sydney Cricket Ground (SCG) and Allianz Stadium. The Trust also operates the broader Moore Park sporting Precinct to the east of Anzac Parade which includes club and sport administration offices for cricket, rugby league, rugby union, Australian rules, and football, elite training fields, fitness centres and public parkland.

Figure 1 – The Sydney Cricket and Sports Ground Trust Precinct



In the year from March 2012 to February 2013, over 1.43 million people attended sports and entertainment events at the SCG and Allianz Stadium. This is in addition to the 335,000 people who used the Stadium Fitness Centre on a regular basis throughout the year, and the employees who work at the venues, offices, and centres within the Precinct. The Precinct is a major destination throughout the year, and regular and accessible usage by its patrons will be essential to the success of the CSELR as a transport service.

In addition to regular events, the Precinct's stadiums are used to host major events. In particular, the SCG will be hosting five matches of the Cricket World Cup in February and March 2015, one of the world's largest sporting events which will bring significant global media attention to the SCG, Sydney, New South Wales and Australia as a whole. As will be discussed later in the submission, it is essential that construction is staged with this event in mind, so that impacts the event and attending spectators are minimised.

As part of the Trust's strategic commitment to the future of the Precinct, the Trust commissioned Cox Architecture to prepare a Master Plan for the Precinct, completed in April 2013. The Master Plan proposes the improvement of the Precinct by creating improved stadia, new spectator and administrative facilities, and a public domain with vastly improved integration to the surrounding transport and pedestrian network, including recognition of light rail servicing the Precinct. The Master Plan will guide the Trust's future development decisions in the Precinct, and as such should form an important consideration in the design of the CSELR. A copy of the Master Plan is attached to this submission.

### **3. The Location of the Moore Park Station and its Integration with the Precinct**

#### ***3.1 The Trust supports the proposed location of the Moore Park Station***

According to the EIS (Section 5.2.3, p. 5-38), it is proposed to locate the Moore Park Station adjacent to the Anzac Parade, near Gregory Avenue and the portal to the tunnel connecting the CSELR to Surry Hills. The Trust strongly supports the proposal location as the most accessible location to both the SCG and Allianz Stadium while minimising disruption to the Moore Park East playing fields. This improves upon the existing location of the bus loop, which already requires a long walk to and from Allianz Stadium. It also enables connection to the tree-lined boulevard which runs between Tramway Oval and Kippax Lake, establishing a significant entrance to the Precinct.

The proposal location is preferable to alternative possibilities, in particular further south near to Lang Road. Such a location would significantly reduce the CSELR's accessibility to Allianz Stadium. During the design development process, the Trust became aware that such a location was being considered as a possible alternative; the Trust would not support the Station being located closer to Lang Road.

The EIS estimates that, compared to existing modal splits for accessing the Precinct where only 5-20% of patrons use event bus services, 33% of patrons at a typical Allianz Stadium event would use light rail services, a figure which does not include bus services. It is questionable whether this modal split would be able to be achieved if the Moore Park Station is up to 800m walking distance from the Allianz Stadium concourse in the opposite direction to the desired destination.

#### ***3.2 The Station should be integrated with the design and function of the Precinct***

The location and design of the Moore Park Station must not be considered in isolation from its connections with the broader Precinct. For the CSELR to positively contribute to the Precinct's access to an integrated transport, it is necessary to consider important changes to the function of existing roadways and improvements to the Precinct's public domain and pedestrian layout to support active use. The EIS includes an Integrated Event Transport Plan (p. 9-34) for the Precinct which demonstrates useful initiatives to comprehensively review access to Moore Park, however there is no timeframe or commitment to implement it. Key aspects of the Plan include:

- Removal of the existing bus loop and extension of Tramway Oval to supplement land lost to the CSELR to the west;
- Establishment of a new bus interchange north of Gregory Avenue;
- Construction of a pedestrian footbridge across Anzac Parade connecting Moore Park East and Moore Park West;
- Additional car parking beneath the existing car park between Moore Park Road and Driver Avenue.

The Trust supports the implementation of the Integrated Event Transport Plan, subject to further consultation and refinement. In particular, the Trust seeks clarification on planning for the relocated bus loop, given that it is identified as being 'proposed' without being identified as part of the works for which approval is sought as part of the application, and that it would have a significant impact on existing operations of the Trust.

These initiatives will contribute to a better integrated and more accessible transport network servicing the Precinct including light rail, buses, walking, cycling and private cars. A well-planned approach to transport management in light of this new infrastructure will also reduce potential traffic impact on surrounding residential areas in Paddington, Centennial Park and Surry Hills.

#### **4. The Impacts of Construction on the Precinct**

The Trust recognises that the construction of the CSELR will be an extensive project and that construction management processes will be implemented to minimise potential impacts on surrounding land uses. Nevertheless, the Trust has reviewed the construction management processes proposed in the EIS, and seeks to make recommendations to avoid significant impact on its land uses and activities. In particular, it is essential that the Trust maintains access to its elite training fields in Moore Park East. This is discussed in detail below.

##### ***4.1 The proposed Moore Park site office is not supported***

The Trust does not support the proposed construction site office and compound located north of the tunnel portal in Moore Park East. The Trust recently invested in establishing an elite training field (Kippax Lake Field) in this location for use by the Sydney Roosters rugby league club and the Waratahs rugby union team, even though this land is owned by the Centennial Park and Moore Park Trust. The establishment of a site office here would not only force these teams to relocate their training bases, but also undermine the investment made by the Trust in establishing the field.

Given the significant disruption to the investment in and use of this location, it is recommended that the alternative site office location, at Randwick Racecourse on the site of the proposed stabling yards, is used rather than the Moore Park location.

##### ***4.2 Construction management should have regard to uses, major events and transport within the Precinct***

Tramway Oval, located east of the proposed Moore Park Station, is used by the Sydney Swans year round as its training base. Like Kippax Lake Field, the Trust has invested heavily in ensuring Tramway Oval is of a standard suitable for elite sporting use for the Sydney Swans. Given this, construction management should have regard to the continued use of Tramway Oval as an important sporting facility for the Sydney Swans. The Trust would like to see more detailed information on the scale of impact on Tramway Oval, and details on the timeframe for impact. As discussed above in Section 3, the Trust would support the relocation of the existing bus loop to allow for the replacement of land lost to the west of Tramway Oval.

It is also requested that TfNSW have regard to the importance of Moore Park East as an event car parking area for patrons. The provision of car parking forms part of the broad transport management approach taken by the Trust for sporting events to ensure alternative travel modes are available for patrons. Event car parking is also an important financial resource for the Trust, who operates and manages the event car parking. It also enables the Trust to financially support their tenant sporting teams by offsetting the Trust's operational costs against rents.

The Trust would seek that construction is staged to minimise significant disruption to major events in the Precinct, in particular during the Cricket World Cup in February and March 2015. Further, specific works, such as the installation of tracks across Lang Road and the existing bus loop, should not be done during sporting events in the Precinct which require high-frequency and volume access across these places. It is noted that, in future operating conditions, this intersection will operate less efficiently than in current conditions (EIS Technical Paper 2, p. 159). The Trust seeks clarification that this analysis has taken into account the larger traffic flows which occur before and after major events in the Precinct. A calendar of upcoming events in the Precinct is attached to this submission.



## 5. Consistency with and Implementation of the Master Plan

The Trust's Master Plan is the outcome of a significant planning and design process led by the Trust to ensure the Precinct is able to attract national and international sporting events and services into the future. It is the only significant strategic planning exercise recently undertaken for the Precinct, as local planning controls do not have the capacity to consider future needs and opportunities in this detail. As such, the Master Plan should be given significant consideration in making land use and planning decisions along this corridor.

Figure 2 – Precinct Master Plan



The significant advantage of the Precinct, when compared to other Sydney sports hubs, is its connectivity and accessibility to the Sydney CBD and local neighbourhoods. It is able to attract both events and tenants to the Precinct as patrons are able to also access transport infrastructure as well as dining and entertainment Precincts. This accessibility would be significantly enhanced by implementation of the pedestrian and transport initiatives identified in the Master Plan.

Core to the implementation of improved accessibility in the Precinct is the construction of a pedestrian overpass across Anzac Parade, near the proposed location of the Moore Park Station. This is identified by both the Master Plan and the Integrated Event Transport Plan in the EIS as essential to the improved operation of the Precinct. As such, the Trust strongly supports the construction of the bridge to enhance accessibility to the Station and the wider Precinct. It recognises the need to deliver transport infrastructure for different modes in order to achieve an improved overall outcome for the Precinct. The Trust notes and supports the proposed inclusion of pedestrian access alongside the light rail bridge across the Eastern Distributor, and suggests that this be used as an example of the importance of integrating active transport networks with mass transport infrastructure.

The Master Plan identifies Moore Park West as a potential future location for underground car parking to support demand during events. This followed a consultative planning process between the Trust, the Centennial Park and Moore Park Trust, and the NSW Government, to establish optimal traffic management outcomes for the Precinct between the joint stakeholders. As the proposed CSELR includes a tunnel section through Moore Park West, the Trust requests that the design of the tunnel has regard to this potential future use of land under Moore Park West. Such a plan would reduce the direct impacts of parking on the quality of playing fields, and could also enable a better regulated traffic management system than the temporary approaches used for parking on playing fields in Moore Park East.

## **6. Adequacy of Light Rail Services during Major Events**

Section 9.2.2 of the EIS addresses the operational capacity of the CSELR. It provides information on the existing and future conditions of transport to and from the Precinct. The Trust supports the intentions to lift the share of patrons accessing the Precinct by light rail when compared to existing shares for buses, as well as to retain bus services to other locations including Circular Quay or as required for specific events.

However, further detail is requested on the capacity of the CSELR to provide adequate service during peak travel times around sporting and entertainment events. The hourly capacity of the CSELR servicing Moore Park during peak times only provides figures which combine northbound and southbound services. Given there is a significantly larger proportion of patrons who come from and return to Central rather than the southern destinations around events, information should be provided which clarifies the ability of the CSELR to provide express services between Moore Park and Central Station, as is what is currently operated with buses.

## **7. Summary of Recommendations and Conclusion**

To iterate, the Trust welcomes the CSELR as an important contribution to Sydney's transport infrastructure. It will support greatly improved accessibility to the Precinct for regular major sporting and entertainment events and for regular users of the Precinct's workplaces and facilities. In response to the EIS documentation, the Trust makes the following recommendations:

### Location of the Moore Park Station

- The Trust supports the proposed location of the Moore Park Station, particularly in comparison to other alternatives suggested during the design development phase. This location maximises accessibility to both the SCG and Allianz Stadium,
- The Station should be integrated with the public domain of the Precinct, as envisaged by the Master Plan and the Integrated Event Transport Plan, including improved pathways, access across Anzac Parade, and a relocated bus loop.

### Construction Management

- The Trust does not support the proposed construction site office and compound north of the tunnel portal in Moore Park East. This location is the site of a recently constructed elite training field, and such a site office would both force the relocation of professional sporting teams and undermine a significant investment by the Trust. It is essential that access to the elite training fields are retained throughout the construction process.
- The construction management program should have regard to the importance of Moore Park East as a car parking area, the timing of major international events such as the 2015 Cricket World Cup, and the operation of important intersections, in particular the corner of Anzac Parade and Lang Road.

### Consistency with the Master Plan

- The Trust's Master Plan is a significant strategic planning direction which will shape the future design and use of the Precinct. The CSELR should maximise consistency with the Master Plan to ensure the Precinct achieves a high level of functionality and accessibility into the future. The

alignment should also ensure that future capital works identified in the Master Plan can be implemented.

Light Rail Operations during Major Events

- The Trust seeks further detail on the operation of the CSELR during major events in the Precinct, particularly in relation to express services between Moore Park and Central Station.

We thank you for the opportunity to comment on the exhibited documentation. The Trust also looks forward to further consultation following public exhibition and determination to respond to any changes to the alignment or detailed design work.

Should you wish to further discuss our submission, please contact me on 02 9380 0399.

Yours sincerely,

A handwritten signature in black ink, appearing to be 'P. Thompson', written in a cursive style.

PIERS THOMPSON  
**General Manager, Major Projects**

Attachments

- Sydney Cricket and Sports Ground Trust Master Plan
- Calendar of events at the SCG and Allianz Stadium, December 2013 – March 2015



# MASTER PLAN KEY ELEMENTS

1. SCG
2. ALLIANZ STADIUM
3. DRIVER AVENUE LINEAR PARK
4. SPORTS MUSEUM
5. 4 MEMBERS TENNIS COURTS
6. SPORTS CENTRAL BUILDING
7. ENTRY PLAZA
8. EXISTING WARATAHS ADMINISTRATION
9. EXISTING NRL BUILDING
10. SPORTS RELATED ADMINISTRATION
11. MOORE PARK PLAZA (MP1)
12. SPORTS RELATED ADMINISTRATION
13. SPORTS RELATED ADMINISTRATION
14. SCG TRUST
15. MOORE PARK ROAD
16. ALLIANZ PEDESTRIAN CONCOURSE
17. SPORTS CENTRAL PLAZA
18. O'REILLY STAND
19. NORTHERN STAND
20. CHURCHILL BREWONGLE STAND (SCG STAGE 03)
21. SCG NO. 2 TRAINING FIELD
22. VICTOR TRUMPER STAND
23. TWENTY-FOUR OUTDOOR PRACTICE WICKETS WITH INDOOR TRAINING FACILITY BELOW (TWELVE TRAINING WICKETS)
24. RUGBY LEAGUE/ UNION TRAINING FIELDS
25. SOCCER TRAINING FIELDS
26. LIGHT RAIL NETWORK / STATION
27. MOORE PARK WEST UNDERGROUND CARPARK
28. SPORTS LIVE
29. ENTERTAINMENT QUARTER





# Trust Schedule of Events

## 4 December 2013

1 *	Start...	Star... 2†	End Date	Anchor Venue	Account Name	Type	Description	Status	Member...	Gates Open	Prelim Ga...	Start... 3†	End...	Forecast...	Primary	Coordin...	Account Rep Name
<b>December, 2013</b>																	
	Wed 04/12/13	04/12/13		Allianz Stadium	Frontier Touring	Concert	Taylor Swift	Confirmed		17:00	18:50	20:30	23:00	40000	Hedrick, James	Clark, Steve	
	Sun 08/12/13	08/12/13		Sydney Cricket Ground	Cricket NSW	Sheffield Shield Match	Sheffield Shield - NSW Blues v South Australia	Confirmed		10:00	N/A	10:30	17:30	500	Henderson, Scott	Burgess, Katie	
	Mon 09/12/13	09/12/13		Sydney Cricket Ground	Cricket NSW	Sheffield Shield Match	Sheffield Shield - NSW Blues v South Australia	Confirmed		10:00	N/A	10:30	17:30	500	Henderson, Scott	Burgess, Katie	
	Tue 10/12/13	10/12/13		Sydney Cricket Ground	Cricket NSW	Sheffield Shield Match	Sheffield Shield - NSW Blues v South Australia	Confirmed		10:00	N/A	10:30	17:30	500	Henderson, Scott	Burgess, Katie	
	Wed 11/12/13	11/12/13		Sydney Cricket Ground	Cricket NSW	Sheffield Shield Match	Sheffield Shield - NSW Blues v South Australia	Confirmed		10:00	N/A	10:30	17:30	500	Henderson, Scott	Burgess, Katie	
	Sun 15/12/13	15/12/13		Allianz Stadium	Sydney Football Club	A-League Round Match	Round 10 - Sydney FC v Melbourne Heart	Confirmed		14:00	14:15	17:00	19:00	14000	Radnidge, Daniel	Watsford, Jacque...	
	Sat 21/12/13	21/12/13		Sydney Cricket Ground	Cricket Australia	Twenty20	BBL - Sydney Sixers v Sydney Thunder	Confirmed		18:15	14:30	19:15	22:15	22000	Hedrick, James	Burgess, Katie	
	Thu 26/12/13	26/12/13		Allianz Stadium	Sydney Football Club	A-League Round Match	Round 12 - Sydney FC v Brisbane Roar	Confirmed		18:30	N/A	19:30	21:30	13000	Radnidge, Daniel	Watsford, Jacque...	
	Sun 29/12/13	29/12/13		Sydney Cricket Ground	Cricket Australia	Twenty20	BBL - Sydney Sixers v Melbourne Stars	Confirmed		18:15	N/A	19:15	22:15	24000	Hedrick, James	Burgess, Katie	
<b>January, 2014</b>																	
	Fri 03/01/14	03/01/14		Sydney Cricket Ground	Cricket Australia	Test Match	Test Match Day 1 - Australia v England	Confirmed	07:00	08:30	N/A	10:30	17:30	48000	Hedrick, James	Burgess, Katie	
	Sat 04/01/14	04/01/14		Sydney Cricket Ground	Cricket Australia	Test Match	Test Match Day 2 - Australia v England	Confirmed	07:00	08:30	N/A	10:30	17:30	48000	Hedrick, James	Burgess, Katie	
	Sun 05/01/14	05/01/14		Sydney Cricket Ground	Cricket Australia	Test Match	Test Match Day 3 - Australia v England	Confirmed	07:00	08:30	N/A	10:30	17:30	42000	Hedrick, James	Burgess, Katie	
	Mon 06/01/14	06/01/14		Sydney Cricket Ground	Cricket Australia	Test Match	Test Match Day 4 - Australia v England	Confirmed	08:00	08:30	N/A	10:30	17:30	39000	Hedrick, James	Burgess, Katie	
	Tue 07/01/14	07/01/14		Sydney Cricket Ground	Cricket Australia	Test Match	Test Match Day 5 - Australia v England	Confirmed	08:00	08:30	N/A	10:30	17:30	TBA	Hedrick, James	Burgess, Katie	
	Fri 10/01/14	10/01/14		Sydney Cricket Ground	Cricket Australia	Twenty20	BBL - Sydney Sixers v Perth Scorchers	Confirmed		18:30	N/A	19:30	22:30	21000	Hedrick, James	Burgess, Katie	
	Wed 15/01/14	15/01/14		Sydney Cricket Ground	Cricket Australia	Twenty20	BBL - Sydney Sixers v Hobart Hurricanes	Confirmed		18:30	N/A	19:30	22:30	20000	Hedrick, James	Burgess, Katie	
	Sat 18/01/14	18/01/14		Allianz Stadium	Sydney Football Club	A-League Round Match	Round 15 - Sydney FC v Central Coast Mariners	Confirmed		18:45	N/A	19:45	21:45	TBA	Radnidge, Daniel	Watsford, Jacque...	
	Sun 19/01/14	19/01/14		Sydney Cricket Ground	Cricket Australia	One Day International	ODI - Australia v England	Confirmed		TBA	N/A	14:20	22:05	38000	Hedrick, James	Burgess, Katie	
<b>February, 2014</b>																	
	Tue 04/02/14	05/02/14		Sydney Cricket Ground	Cricket Australia	Twenty20	BBL Semi Final	Tentative		TBA	TBA	19:40	22:40	TBA	Hedrick, James	Burgess, Katie	
	Fri 07/02/14	07/02/14		Allianz Stadium	Waratahs Rugby	Trial Match	Trial Match - Waratahs v Blues	Confirmed		TBA	TBA	19:30	21:10	TBA	Radnidge, Daniel	Watsford, Jacque...	
	Fri 07/02/14	07/02/14		Sydney Cricket Ground	Cricket Australia	Twenty20	BBL Grand Final	Tentative		TBA	TBA	19:40	22:40	TBA	Hedrick, James	Burgess, Katie	
	Sat 08/02/14	08/02/14		Allianz Stadium	Sydney Football Club	A-League Round Match	Round 18 - Sydney FC v Adelaide United	Confirmed		18:45	N/A	19:45	21:45	TBA	Radnidge, Daniel	Watsford, Jacque...	
	Wed 12/02/14	12/02/14		Sydney Cricket Ground	Cricket NSW	Sheffield Shield Match	Sheffield Shield - NSW Blues v Victoria	Confirmed		10:00	N/A	10:30	17:30	TBA	Henderson, Scott	Burgess, Katie	
	Thu 13/02/14	13/02/14		Sydney Cricket Ground	Cricket NSW	Sheffield Shield Match	Sheffield Shield - NSW Blues v Victoria	Confirmed		10:00	N/A	10:30	17:30	TBA	Henderson, Scott	Burgess, Katie	
	Fri 14/02/14	14/02/14		Sydney Cricket Ground	Cricket NSW	Sheffield Shield Match	Sheffield Shield - NSW Blues v Victoria	Confirmed		10:00	N/A	10:30	17:30	TBA	Henderson, Scott	Burgess, Katie	
	Sat 15/02/14	15/02/14		Sydney Cricket Ground	Cricket NSW	Sheffield Shield Match	Sheffield Shield - NSW Blues v Victoria	Confirmed		10:00	N/A	10:30	17:30	TBA	Henderson, Scott	Burgess, Katie	
	Sat 15/02/14	15/02/14		Allianz Stadium	Sydney Football Club	A-League Round Match	Round 19 - Sydney FC v Perth Glory	Confirmed		16:30	TBA	17:30	19:30	TBA	Radnidge, Daniel	Watsford, Jacque...	
	Sat 22/02/14	22/02/14		Allianz Stadium	National Rugby Leagu...	NRL World Club Chal...	World Club Challenge - Roosters v Wigan	Confirmed		TBA	TBA	19:30	21:10	TBA	Hedrick, James	Burgess, Katie	
	Sun 23/02/14	23/02/14		Allianz Stadium	Waratahs Rugby	Super Rugby Round M...	Round 2 - Waratahs v Force	Confirmed		TBA	TBA	16:05	17:45	TBA	Radnidge, Daniel	Watsford, Jacque...	
<b>March, 2014</b>																	
	Sat 08/03/14	08/03/14		Allianz Stadium	Sydney Football Club	A-League Round Match	Round 22 - Sydney FC v Western Sydney Wander...	Confirmed		17:30	N/A	19:45	21:45	TBA	Radnidge, Daniel	Watsford, Jacque...	
	Fri 14/03/14	14/03/14		Allianz Stadium	Sydney Football Club	A-League Round Match	Round 23 - Sydney FC v Brisbane Roar	Confirmed		18:30	N/A	19:30	21:30	TBA	Radnidge, Daniel	Watsford, Jacque...	
	Sat 15/03/14	15/03/14		Allianz Stadium	Sydney Roosters	NRL Round Match	Round 2 - Roosters v Eels	Confirmed		TBA	17:15	19:30	21:10	TBA	Hedrick, James	Burgess, Katie	
	Thu 20/03/14	20/03/14		Sydney Cricket Ground	Major League Baseball	Major League Baseball	MLB Exhibition - LA Dodgers v Team Australia	Confirmed		TBA	TBA	19:00	23:59	TBA	Clark, Steve	Clark, Steve	
	Fri 21/03/14	21/03/14		Sydney Cricket Ground	Major League Baseball	Major League Baseball	MLB Exhibition - Diamondbacks v Team Australia	Confirmed		TBA	TBA	19:00	23:59	TBA	Clark, Steve	Clark, Steve	
	Fri 21/03/14	21/03/14		Allianz Stadium	Waratahs Rugby	Super Rugby Round M...	Round 6 - Waratahs v Rebels	Confirmed		TBA	TBA	19:40	21:20	TBA	Radnidge, Daniel	Watsford, Jacque...	
	Sat 22/03/14	22/03/14		Sydney Cricket Ground	Major League Baseball	Major League Baseball	MLB - Arizona Diamondbacks v LA Dodgers	Confirmed		TBA	TBA	19:00	23:59	TBA	Clark, Steve	Clark, Steve	
	Sun 23/03/14	23/03/14		Sydney Cricket Ground	Major League Baseball	Major League Baseball	MLB - Arizona Diamondbacks v LA Dodgers	Confirmed		TBA	TBA	13:00	23:59	TBA	Clark, Steve	Clark, Steve	
	Fri 28/03/14	28/03/14		Allianz Stadium	Sydney Roosters	NRL Round Match	Round 4 - Roosters v Sea Eagles	Confirmed		TBA	17:25	19:40	21:20	TBA	Hedrick, James	Burgess, Katie	
<b>April, 2014</b>																	
	Fri 04/04/14	04/04/14		Allianz Stadium	Sydney Roosters	NRL Round Match	Round 5 - Roosters v Bulldogs	Confirmed		TBA	17:25	19:40	21:20	TBA	Hedrick, James	Burgess, Katie	
	Sat 05/04/14	05/04/14		Sydney Cricket Ground	St George Illawarra Dr...	NRL Round Match	Round 5 - Dragons v Rabbitohs	Confirmed		TBA	17:15	19:30	21:10	TBA	Radnidge, Daniel	Watsford, Jacque...	
	Sun 06/04/14	06/04/14		Allianz Stadium	Sydney Football Club	A-League Round Match	Round 26 - Sydney FC v Wellington Phoenix	Confirmed		16:00	N/A	17:00	19:00	TBA	Radnidge, Daniel	Watsford, Jacque...	
	Sun 13/04/14	13/04/14		Sydney Cricket Ground	Sydney Swans	AFL Round Match	Round 4 - Sydney Swans v North Melbourne	Confirmed		TBA	TBA	13:10	15:40	TBA	Hedrick, James	Burgess, Katie	
	Sun 13/04/14	13/04/14		Allianz Stadium	Sydney Football Club	A-League Round Match	Round 27 - Sydney FC v Perth Glory	Confirmed		16:00	N/A	17:00	19:00	TBA	Radnidge, Daniel	Watsford, Jacque...	

# Trust Schedule of Events

4 December 2013

1	*	Start...	Star... 21	End Date	Anchor Venue	Account Name	Type	Description	Status	Member...	Gates Open	Prelim Ga...	Start... 31	End...	Forecast...	Primary	Coordin...	Account Rep Name
		Thu 17/04/14	20/04/14		Allianz Stadium	Football Federation of...	A-League Final Series	A-League Elimination Final	Tentative		TBA	TBA	00:00	23:59	TBA	Radnidge, Daniel		Watsford, Jacque...
		Sat 19/04/14	19/04/14		Sydney Cricket Ground	Sydney Swans	AFL Round Match	Round 5 - Sydney Swans v Fremantle	Confirmed		TBA	TBA	16:40	19:10	TBA	Radnidge, Daniel		Burgess, Katie
		Sat 19/04/14	19/04/14		Allianz Stadium	Waratahs Rugby	Super Rugby Round M...	Round 10 - Waratahs v Bulls	Confirmed		TBA	TBA	19:40	21:20	TBA	Radnidge, Daniel		Watsford, Jacque...
		Thu 24/04/14	27/04/14		Allianz Stadium	Football Federation of...	A-League Final Series	A-League Semi Final	Tentative		TBA	TBA	00:00	23:59	TBA	Radnidge, Daniel		Watsford, Jacque...
		Fri 25/04/14	25/04/14		Allianz Stadium	St George Illawarra Dr...	NRL Round Match	Round 8 - Dragons v Roosters	Confirmed		TBA	13:45	16:00	17:40	TBA	Radnidge, Daniel		Watsford, Jacque...
		<b>May, 2014</b>																
		Sat 03/05/14	03/05/14		Allianz Stadium	Waratahs Rugby	Super Rugby Round M...	Round 12 - Waratahs v Hurricanes	Confirmed		TBA	TBA	19:40	21:20	TBA	Radnidge, Daniel		Watsford, Jacque...
		Sun 04/05/14	04/05/14		Allianz Stadium	Football Federation of...	A-League Final Series	A-League Grand Final	Tentative		TBA	TBA	16:00	18:00	TBA	Radnidge, Daniel		Watsford, Jacque...
		Fri 09/05/14	09/05/14		Allianz Stadium	Sydney Roosters	NRL Round Match	Round 9 - Roosters v Wests Tigers	Confirmed		TBA	17:25	19:40	21:20	TBA	Hedrick, James		Burgess, Katie
		Sun 18/05/14	18/05/14		Allianz Stadium	Waratahs Rugby	Super Rugby Round M...	Round 14 - Waratahs v Lions	Confirmed		TBA	TBA	16:05	17:45	TBA	Radnidge, Daniel		Watsford, Jacque...
		Thu 29/05/14	29/05/14		Sydney Cricket Ground	Sydney Swans	AFL Round Match	Round 11 - Sydney Swans v Geelong Cats	Confirmed		TBA	TBA	19:10	21:40	TBA	Hedrick, James		Burgess, Katie
		Sat 31/05/14	31/05/14		Allianz Stadium	Sydney Roosters	NRL Round Match	Round 12 - Roosters v Raiders	Confirmed		TBA	15:15	17:30	19:10	TBA	Hedrick, James		Burgess, Katie
		<b>June, 2014</b>																
		Sat 14/06/14	14/06/14		Sydney Cricket Ground	Sydney Swans	AFL Round Match	Round 13 - Sydney Swans v Port Adelaide	Confirmed		TBA	TBA	14:10	16:40	TBA	Hedrick, James		Burgess, Katie
		Sat 14/06/14	14/06/14		Allianz Stadium	Sydney Roosters	NRL Round Match	Round 14 - Roosters v Knights	Confirmed		TBA	15:15	19:30	21:10	TBA	Hedrick, James		Burgess, Katie
		Sat 21/06/14	21/06/14		Allianz Stadium	Australian Rugby Union	International Rugby	Wallabies v France	Confirmed		TBA	TBA	15:00	16:40	TBA	Radnidge, Daniel		Watsford, Jacque...
		Sat 28/06/14	28/06/14		Sydney Cricket Ground	Sydney Swans	AFL Round Match	Round 15 - Sydney Swans v GWS Giants	Confirmed		TBA	TBA	19:40	22:10	TBA	Hedrick, James		Burgess, Katie
		<b>July, 2014</b>																
		Sat 05/07/14	05/07/14		Allianz Stadium	Sydney Roosters	NRL Round Match	Round 17 - Roosters v Sharks	Confirmed		TBA	17:15	19:30	21:10	TBA	Hedrick, James		Burgess, Katie
		Sun 06/07/14	06/07/14		Allianz Stadium	Waratahs Rugby	Super Rugby Round M...	Round 18 - Waratahs v Highlanders	Confirmed		TBA	TBA	16:05	17:45	TBA	Radnidge, Daniel		Watsford, Jacque...
		Sat 12/07/14	12/07/14		Sydney Cricket Ground	Sydney Swans	AFL Round Match	Round 17 - Sydney Swans v Carlton	Confirmed		TBA	TBA	19:40	22:10	TBA	Hedrick, James		Burgess, Katie
		Fri 18/07/14	19/07/14		Allianz Stadium	Australian Rugby Union	Super Rugby Final Seri...	Super Rugby Qualifiers	Tentative		TBA	TBA	00:00	23:59	TBA	Radnidge, Daniel		Watsford, Jacque...
		Sat 19/07/14	19/07/14		Allianz Stadium	Sydney Roosters	NRL Round Match	Round 19 - Roosters v Panthers	Confirmed		TBA	12:45	15:00	16:40	TBA	Hedrick, James		Burgess, Katie
		Fri 25/07/14	26/07/14		Allianz Stadium	Australian Rugby Union	Super Rugby Final Seri...	Super Rugby Semi Finals	Tentative		TBA	TBA	00:00	23:59	TBA	Radnidge, Daniel		Watsford, Jacque...
		<b>August, 2014</b>																
		Fri 01/08/14	04/08/14		Allianz Stadium	Sydney Roosters	NRL Round Match	Round 21 - Roosters v Dragons	Confirmed		TBA	TBA	00:00	23:59	TBA	Hedrick, James		Burgess, Katie
		Fri 01/08/14	01/08/14		Sydney Cricket Ground	Sydney Swans	AFL Round Match	Round 19 - Sydney Swans v Essendon	Confirmed		TBA	TBA	19:50	22:20	TBA	Hedrick, James		Burgess, Katie
		Sat 02/08/14	02/08/14		Allianz Stadium	Australian Rugby Union	Super Rugby Final Seri...	Super Rugby Final	Tentative		TBA	TBA	00:00	23:59	TBA	Radnidge, Daniel		Watsford, Jacque...
		Fri 08/08/14	11/08/14		Sydney Cricket Ground	South Sydney Rabbitohs	NRL Round Match	Round 22 - Rabbitohs v Sea Eagles	Confirmed		TBA	TBA	00:00	23:59	TBA	Hedrick, James		Burgess, Katie
		Fri 08/08/14	11/08/14		Allianz Stadium	Sydney Roosters	NRL Round Match	Round 22 - Roosters v Titans	Confirmed		TBA	TBA	00:00	23:59	TBA	Hedrick, James		Burgess, Katie
		Sat 16/08/14	16/08/14		Sydney Cricket Ground	Sydney Swans	AFL Round Match	Round 21 - Sydney Swans v St Kilda	Confirmed		TBA	TBA	13:45	16:15	TBA	Hedrick, James		Burgess, Katie
		Thu 28/08/14	01/09/14		Allianz Stadium	Sydney Roosters	NRL Round Match	Round 25 - Roosters v Storm	Confirmed		TBA	TBA	00:00	23:59	TBA	Hedrick, James		Burgess, Katie
		<b>September, 2014</b>																
		Thu 04/09/14	07/09/14		Allianz Stadium	Sydney Roosters	NRL Round Match	Round 26 - Roosters v Rabbitohs	Confirmed		TBA	TBA	00:00	23:59	TBA	Hedrick, James		Burgess, Katie
		<b>February, 2015</b>																
		Fri 27/02/15	27/02/15		Sydney Cricket Ground	ICC Cricket World Cup...	One Day International	ICC World Cup - South Africa v West Indies	Confirmed		TBA	N/A	00:00	23:59	TBA	Hedrick, James		Burgess, Katie
		<b>March, 2015</b>																
		Sun 08/03/15	08/03/15		Sydney Cricket Ground	ICC Cricket World Cup...	One Day International	ICC World Cup - Australia v Sri Lanka	Confirmed		TBA	N/A	00:00	23:59	TBA	Hedrick, James		Burgess, Katie
		Fri 13/03/15	13/03/15		Sydney Cricket Ground	ICC Cricket World Cup...	One Day International	ICC World Cup - England v Afghanistan	Confirmed		TBA	N/A	00:00	23:59	TBA	Hedrick, James		Burgess, Katie
		Wed 18/03/15	18/03/15		Sydney Cricket Ground	ICC Cricket World Cup...	One Day International	ICC World Cup - Quarter Final	Confirmed		TBA	N/A	00:00	23:59	TBA	Hedrick, James		Burgess, Katie
		Thu 26/03/15	26/03/15		Sydney Cricket Ground	ICC Cricket World Cup...	One Day International	ICC World Cup - Semi Final	Confirmed		TBA	N/A	00:00	23:59	TBA	Hedrick, James		Burgess, Katie