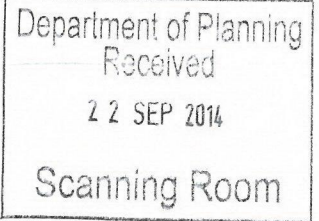


PCU55929



Submission from UnitingCare Jack and Jill Preschool:

As part of responsibility to allow children their right to participate, we have continued our discussions around the new river crossing, and allowed children to express their thoughts on the current plan.

Our project stems from the United Nations Child Friendly Cities initiative- an approach currently being trialled in Victoria and South Australia, and soon to be implemented more widely across the country. The approach challenges councils and city planners to listen to children's voices during planning and give their opinion due weight, as they would any other member of the community.

In doing so research tells us that children become more connected to the community, empowered to influence change, and develop skills which stay with them across their life span.

As educators, we have noted that our children have been very engaged and concerned with this project. We have also noted that many families in our community use the walk way of the old bridge for recreation, and children have directly commented on the limits of this

walk, and dreamed of better facilities for recreation and play.

As Grafton has limited recreational walkways near the river (especially in comparison with other Australian towns and cities), we as a community see this circuit to have great potential for a recreation walking/cycling track that is very unique. We hope you see the value in the children's vision to have play facilities in the space between the bridges on the South Grafton side.

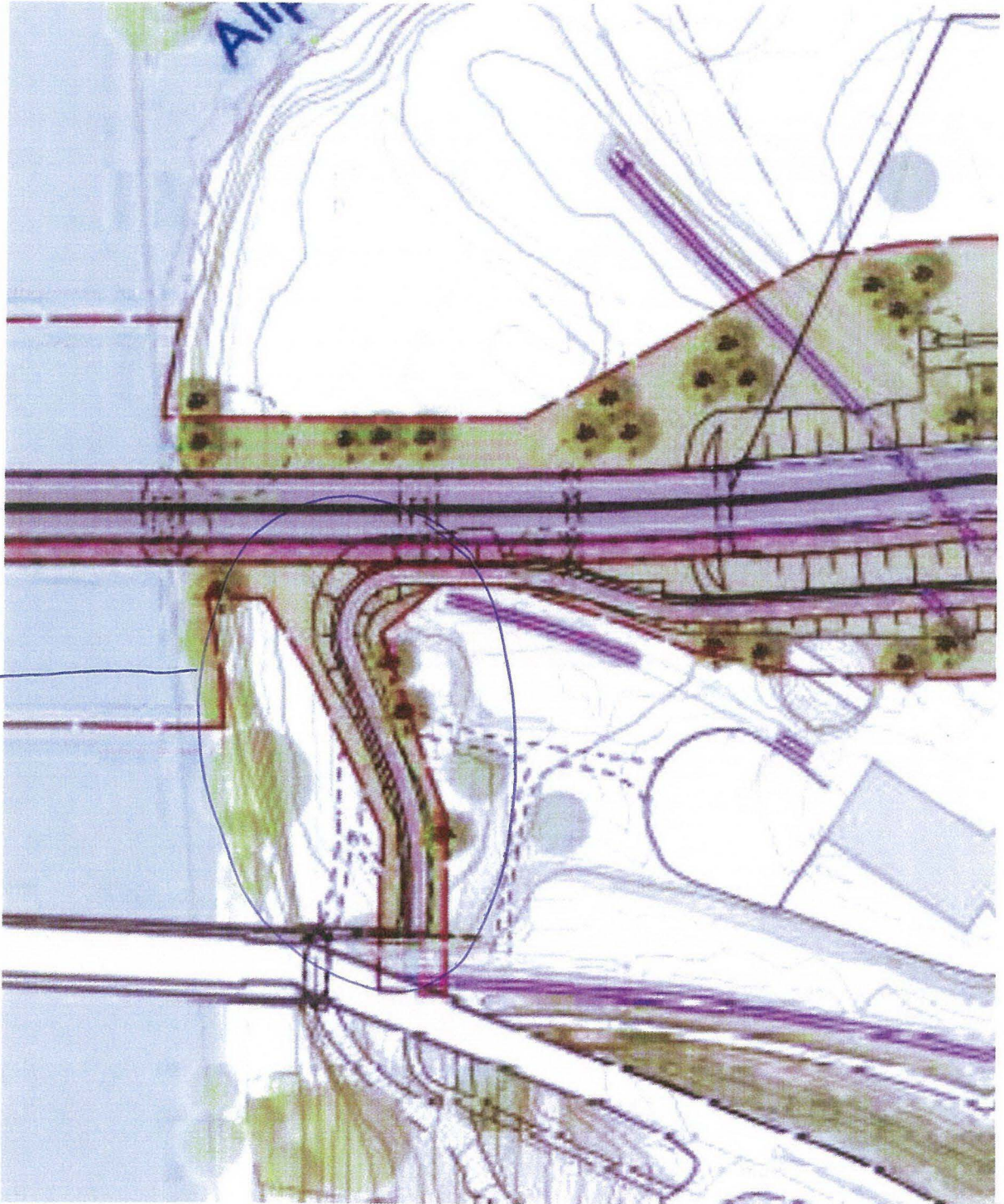
We have attached letters and requests from the children. Each letter has been dictated by children, and adults have not influenced what they choose to say in any way.

Thanks for considering our feedback,



Bridget Olssen

Director, UnitingCare Jack and Jill Preschool



Area of interest.

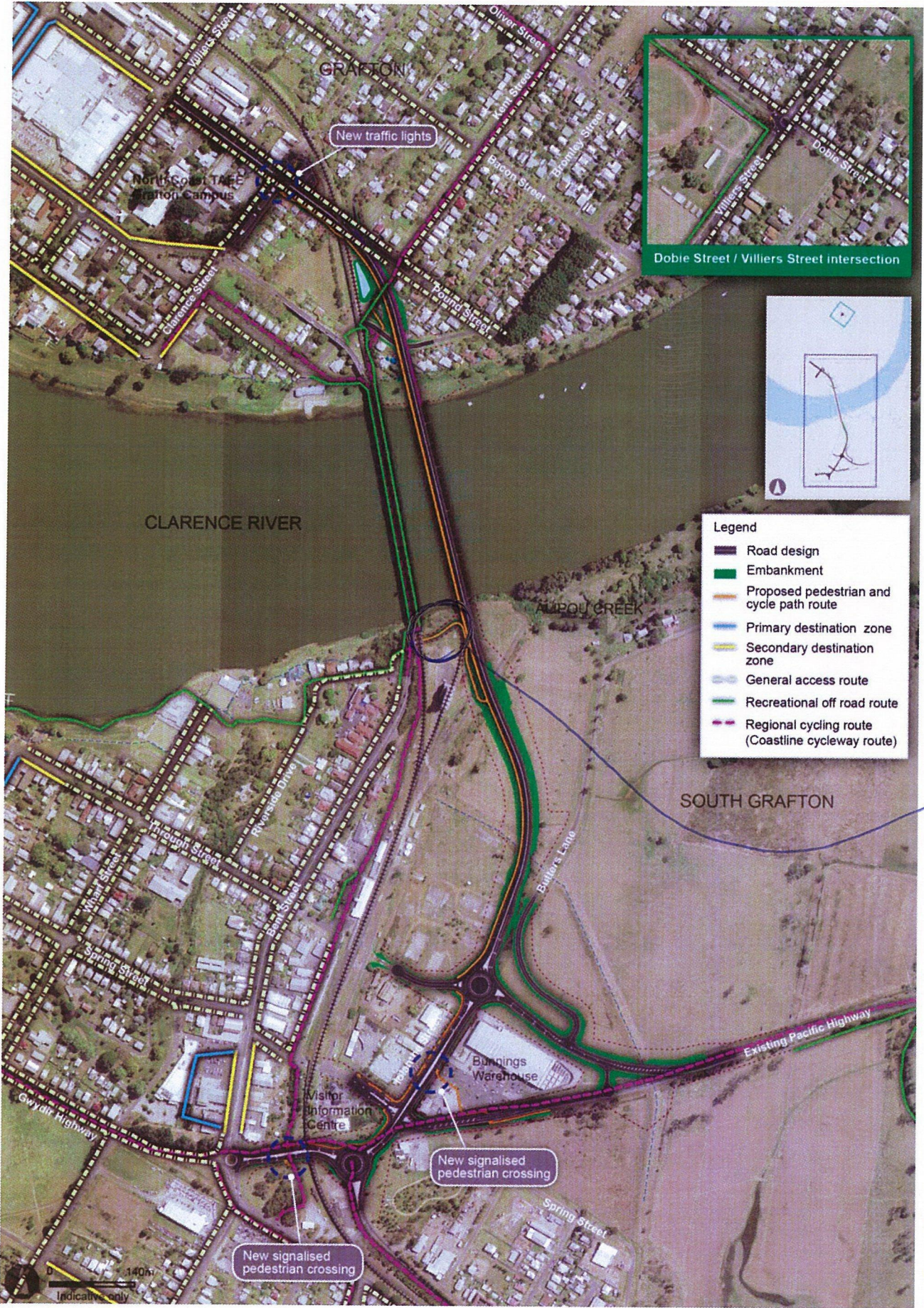
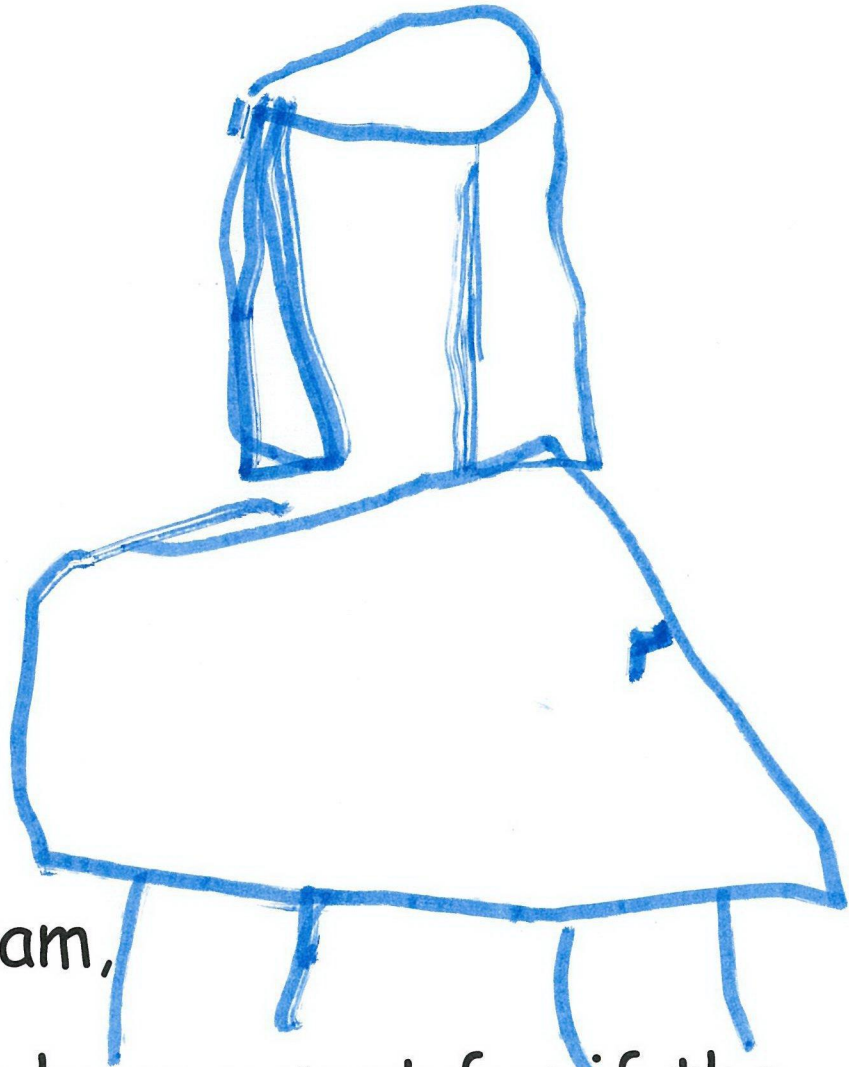


Figure 5-8 Pedestrian and cyclist access and circulation in Grafton and South Grafton

Note: Design is subject to further refinement during the detailed design stage.



Dear Adam,

Could we have a seat for if the walk is long and you want to sit down near the path?

From Nina



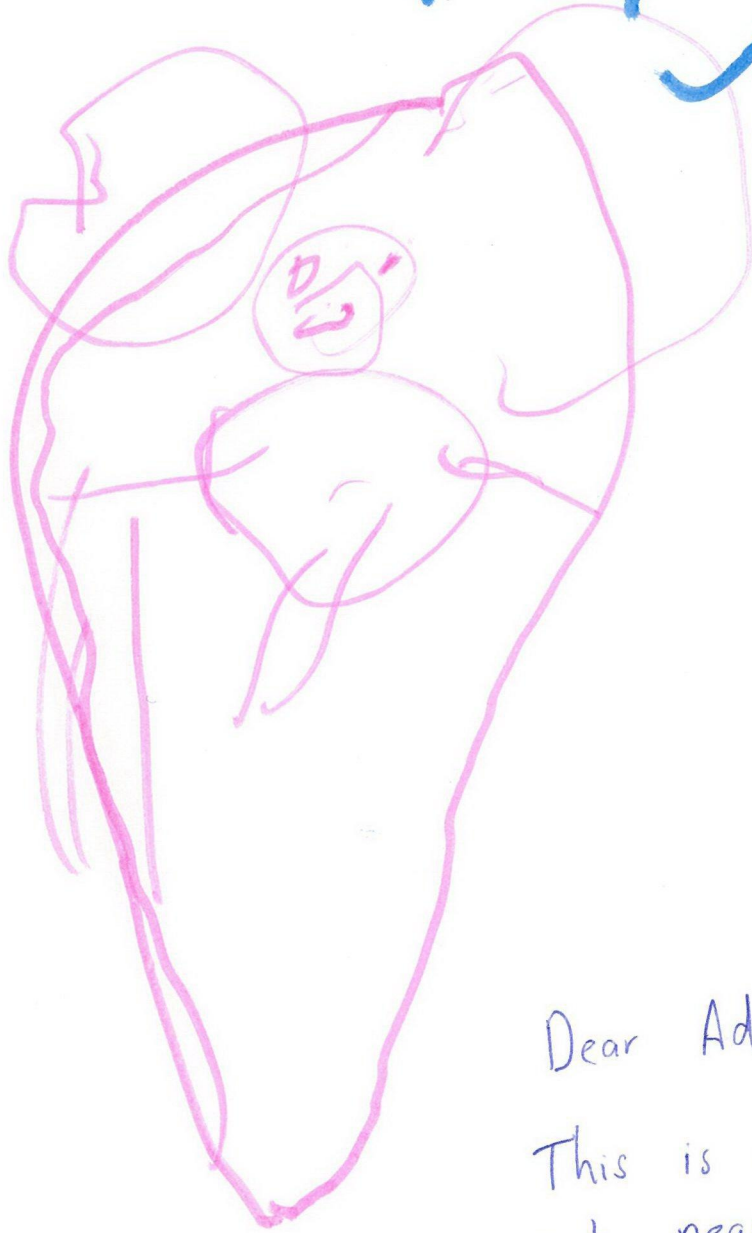
Dear Adam,

Please can we have a playground at  
the end of the bridge?

From

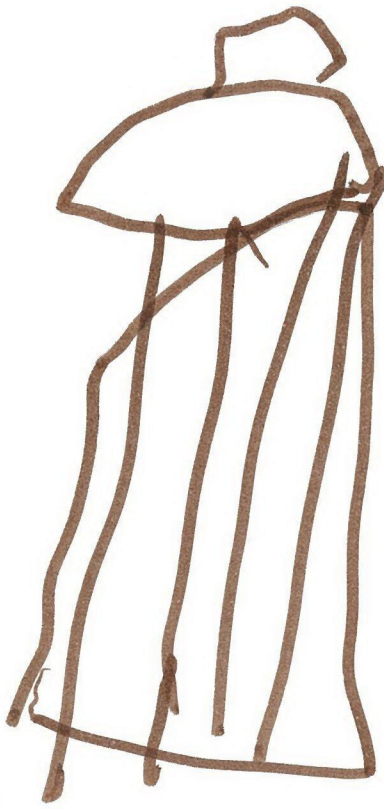
Elisabeth **K**

9/8/20



Dear Adam,  
This is a slide to  
put near the path  
by the bridge.

From Tayla.



Dear Adam,

Will you remember to put a rubbish bin near the path at the front? If you are hungry when you are walking over the bridge, then you will have to hold your rubbish, and then you won't be able to play on the swing near the path.

From Matthew



# Documented Ideas on the signs on the BRIDGE

## Ideas:

- I hope you like the Bridge
- Go slow for big Trucks
- Welcome coming over the bridge
- Please like the bridge
- Your welcome here
- I hope you like Australia
- No u turn on the bridge
- Welcome to Grafton, hope you like it
- Turn around at the end of the bridge to get back to South Grafton
- Grafton'- 'It's a great Place
- A love heart sign
- It's a great place for a picnic
- Welcome to Grafton, we hope you like it here, please play with me.
- We hope you like Grafton, Your welcome here

Don't be  
afraid to  
← consider these  
sign ideas!


Elisabeth wrote this sign at the literacy table. It says 'You're Welcome Here.'



Dear Adam,

Thank you for building us  
THANK you for  
the bridge and the path.

Please think about putting

 a pond

and a swing. Please put

a slide. Tania

From

#Sabella  
Madison  
did it

 SABABONINA 😊

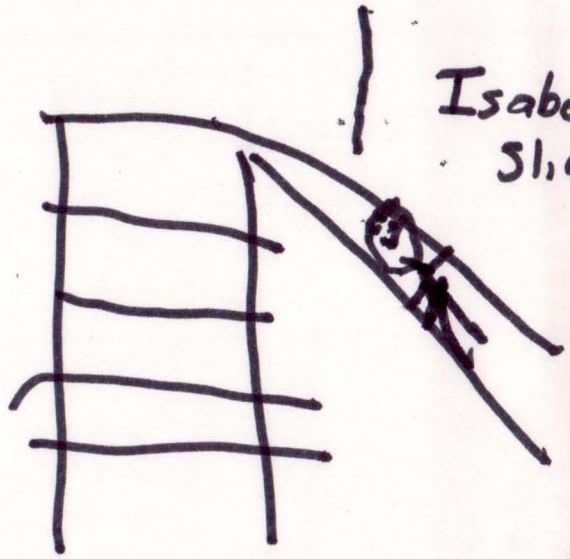
New road

Nina's pond

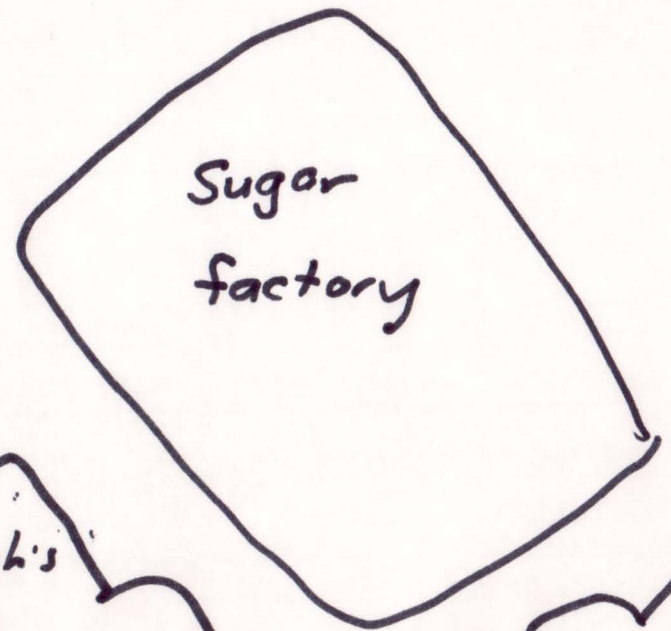


Talia's path

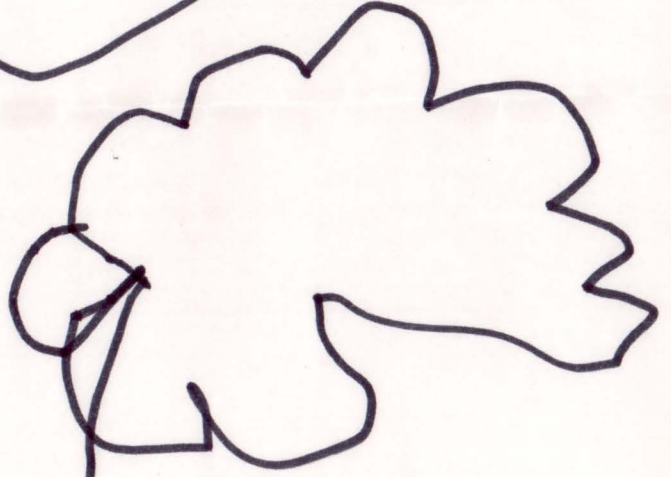
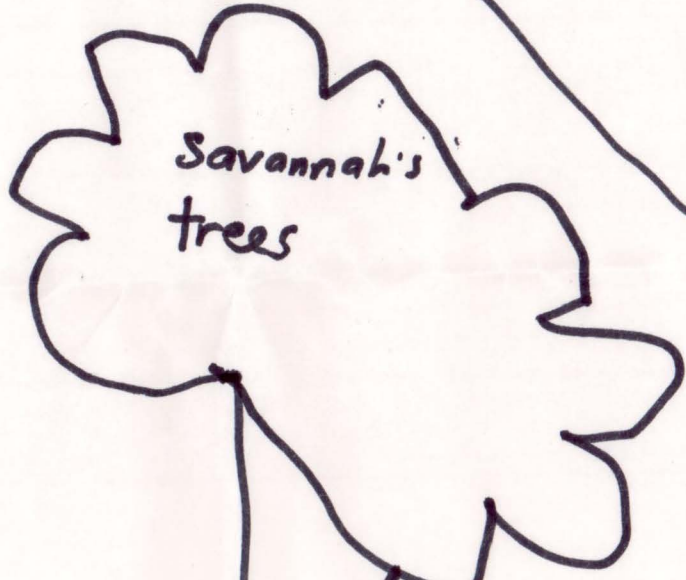
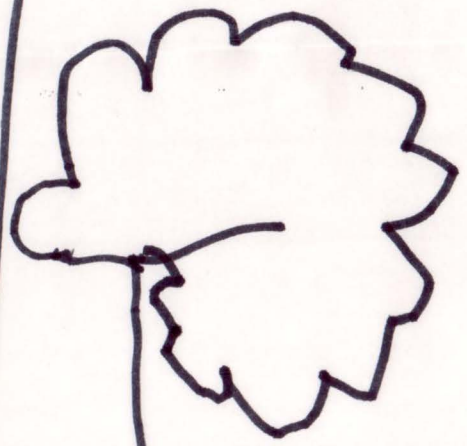
Isabella's slide



Sugar factory



Savannah's trees



Madison's Swing



Old road