



This drawing should be read in conjunction with all relevant contracts, specifications and drawings. Dimensions are in millimetres. Levels are metres. Do not scale off drawings. Use figured dimensions only. Check dimensions on Site. Report discrepancies immediately.

NOTES

- DEMOLITION LEGEND**
- EXISTING BUILDING ELEMENT TO REMAIN
 - EXISTING BUILDING ELEMENTS TO BE DEMOLISHED
 - EXISTING TREE TO BE REMOVED
(Tree identification numbers, shown for trees above 4m in height, correspond with numbering from the ARBORICULTURE IMPACT ASSESSMENT REPORT by Allied Tree Consultancy (dated May 2020))

GAS & WATER METER & RELATED SERVICES TO BE RETAINED

REMOVE TREES 83, 84 & 85

REMOVE TREES 80, 81, 82 & 86

DEMOLISH EXISTING BUILDINGS 8 & 9, COVERED WAY (TO EXTENT SHOWN) & MORTUARY SHELTER. REMOVE PAVING & VEGETATION. REMOVE SERVICES AS NOTED ON SERVICES ENGINEERS DEMOLITION DRAWINGS

PROPOSED NCS BUILDING OUTLINE

DEMOLISHED COVERED WALKWAY

PROPOSED FOOTPATH CROSSING

RETAIN & PROTECT EXISTING SCULPTURE SETTING

DATE PRINTED: 15/06/2020 3:08:19 PM

ISSUE	DATE	SUBJECT	VALIDN.
4	15.06.20	ISSUED FOR PLANNING APPROVAL	FS
3	06.04.20	ISSUED FOR PLANNING APPROVAL	FS
2	16.01.20	ISSUED FOR PLANNING APPROVAL	FS
1	28.11.19	ISSUED FOR PLANNING APPROVAL	FS

PROJECT MANAGER
CBRE
CBRE
Level 21, 363 George Street
Sydney, NSW 2000
T +61 2 9333 9090
E www.cbre.com.au
ABN - 57 057 373 574

STRUCTURE & CIVIL
BONACCI
BONACCI
Level 6, 37 York Street
Sydney NSW 2000
T +61 2 8247 8400
E sydney@bonaccigroup.com
ABN - 42 060 332 345

HYDRAULIC & CIVIL
Stantec
STANTEC
Level 4, 99 Walker Street
North Sydney, New South Wales,
Australia 2060
T +61 2 9493 9700
E BusinessServices.NSW@stantec.com
ABN - 34 620 484 902

MECHANICAL & ELECTRICAL
STEENSEN VARMING
STEENSEN VARMING
Level 8, 9 Castlereagh Street
Sydney NSW 2000, Australia
T +61 2 9493 9700
E info@steensenvarming.com
ABN - 50 001 189 037



ARCHITECT
djrd architects
T + 612 9319 2955
ABN: 48 942 921 969
Nominated Architects:
Andrew Hipwell 6562
Daniel Beekwilder 6192
63 Myrtle Street
Chippendale NSW 2008
Sydney Australia
djrd.com.au

NSW Health Infrastructure
DETERMINED - APPROVAL
REF Approval No: 18/2020
Date: 07 August 2020
Signed by: *[Signature]*

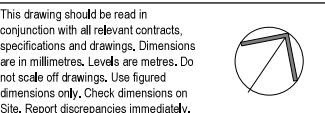
PROJECT
GRIFFITH BASE HOSPITAL REDEVELOPMENT
Noorebar Ave, Griffith NSW 2680, Australia

REF WORKS

PHASE	TENDER ADDENDUM
DRAWN	SCALE AT A1
FS	1:200

DESCRIPTION
DEMOLITION PLAN - REF WORKS - Phase 1, Area A


PROJECT No	DRAWING No	REVISION
19431	130565-DJRD-AR-DWG-B36_01-0212	4

[illegible]

PROJECT MANAGER

CBRE
 CBRE
 Level 21, 363 George Street
 Sydney NSW 2000
 T +61 2 9333 9030
 E www.cbre.com.au
 AEN - 57 057 373/4

HYDRAULIC & CIVIL

 **Stantec**
 STANTEC
 Level 4, 59 Walker Street
 North Sydney, New South Wales
 Australia 2060
 T +61 2 9459 8000
 E BusinessServices.NSW@stantec.com,
 AEN - 34 620 484 602

STRUCTURE & CIVIL

BONACCI
 BONACCI
 Level 6, 37 York Street
 Sydney NSW 2000
 T +61 2 847 8400
 E sydney@bonaccigroup.com
 AEN - 42 060 332 345

MECHANICAL & ELECTRICAL

STEENSEN VARMIN
 STEENSEN VARMIN
 Level 8, 9 Castlereagh Street
 Sydney NSW 2000, Australia
 T +61 2 955 9700
 E info@steenstenvarming.com
 AEN - 50 001 189 637



ARCHITECT

cljrd
architects

T + 612 9319 2955
ABN: 48 942 921 969
Nominated Architects:
Andrew Hipwell 6562
Daniel Beekwilder 6192

63 Myrtle Street
Chippendale NSW 2008
Sydney Australia
cljrd.com.au

PROJECT
GRIFFITH BASE HOSPITAL
REDEVELOPMENT
Noorebar Ave, Griffith NSW 2680, Australia

BUILDING B37
NON CLINICAL SUPPORT BUILDING

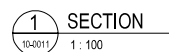
PHASE
REF SUBMISSION

DRAWN	SCALE AT A1
SZ	1:100

DESCRIPTION
PROPOSED NCS BUILDING
FLOOR PLAN

PROJECT No	DRAWING No	REVISION
19431	130565-DJRD-AR-DWG-B37_10-0011	3

DATE PRINTED: 6/04/2020 2:36:49 PM



DATE PRINTED: 6/04/2020 2:42:42 PM

Indicative Plant List

Symbol	Botanic Name	Common Name	Mature Size (h x w)	Pot Size	Spacing	Qty
TREES						
Pc	<i>Pyrus calleryana</i>	Callery Pear	15 x 15	200L	As Shown	9
SHRUBS						
AL	<i>Acacia cognata</i> 'Limelight'	River Wattle	0.8 x 1.1	200mm	As Shown	37
CW	<i>Callistemon viminalis</i> 'Wildfire'	Weeping Bottlebrush	3 x 1.5	300mm	As Shown	42
WWG	<i>Westringia</i> 'Wynabbie Gem'		1.5 x 1.5	300mm	As Shown	52
GRASSES AND GROUNDCOVERS						
Cg	<i>Carpobrotus glaucescens</i>	Pig Face	.1 x 1	150mm	5/m2	101
LT	<i>Lomandra</i> 'lanka'		.4 x .4	150mm	5/m2	239
Hv	<i>Hardenbergia violacea</i>	Happy Wanderer	.4 x 2	150mm	5/m2	104
Mp	<i>Myoporum parvifolium</i>	Creeping Boobalia	.15 x 2	150mm	5/m2	119

Specification

GENERAL NOTES

References

All plans and details included in the project documents shall be read in conjunction with this specification. All structural and civil works components of the landscape design shall be referenced to engineers' details and specifications. Read this specification in conjunction with the plant and materials schedule on this drawing. If in doubt about any detail or if conflicts are found in the documents, seek advice.

Workmanship and Materials

The whole of the landscape works shall be carried out by a competent, trained and qualified landscape contractor who is experienced in horticultural practices, landscape construction and planting techniques. The landscape contractor shall hold a current Building Contractors License and/or be a financial member of LNA Landscape Association NSW & ACT or equivalent organisations in other states.

EXISTING TREES

Trees to be Retained and Protected

Identify and mark trees and shrubs to be retained using a suitable non-injurious, easily visible and removable means of identification. Protect from damage the trees and shrubs to be retained, including those beyond the site area, both above and below the ground. If a tree becomes damaged during the works or it is proposed to perform work on a tree, give written notice immediately and obtain instructions.

Work near Trees

Keep the area of the drip-line free from construction material and debris. Do not place bulk materials and harmful materials under or near trees. Do not place spoil from excavations against tree trunks. Prevent winch-down materials such as cement from harming trees and plants. Do not remove topsoil from, or add topsoil to, the area within the drip-line of trees.

EARTHWORKS

Excavation, Trimming and Filling

Except as otherwise note in the contract, bulk excavation is excluded from the landscape works. Trim and fill the excavated ground surfaces to achieve design levels to accommodate finish materials as detailed. Compact the finished surface as required for the finished ground treatment.

Sub-soil Drainage

Keep the excavated works drained and free of standing water. Allow to supply and install sub-soil drainage pipes as required for the new works to ensure that all gardens are well drained. Connect the sub-soil drainage pipes to the nearest downstream stormwater pits. Include pipe filter socks.

SOFTWORKS

Soil Testing

Undertake at least two (2) soil tests, in locations as advised by Project Manager, and provide results and recommendations for the improvement of plant growth and to adjust the soil to achieve appropriate planting medium (including pit levels) for successful plant growth.

Subsoil

Excavate all garden beds to bring the subsoil to at least 300mm below finished design levels. Shape the subsoil to fall to subsoil drains where applicable. Do not excavate within the drip line of trees to be retained. Excavate all turf areas to bring the subsoil to at least 100mm below finished design levels. Shape the subsoil to fall to subsoil drains where applicable. Do not excavate within the drip line of trees to be retained. Cultivate the subsoil to a further depth of 100mm. Remove stones exceeding 25mm, clods of earth exceeding 50mm, and weeds, rubbish or other deleterious material brought to the surface during cultivation. Do not disturb services or tree roots, if necessary cultivate these areas by hand. During cultivation, thoroughly mix in materials required to be incorporated into the subsoil, as recommended in the soil testing results and to manufacturer's recommendations. Trim the surface to design levels after cultivation.

Topsail

Import topsoil for the garden and turf areas, unless the topsoil can be provided from material recovered from the site, as recommended in the soil testing results. Spread the topsoil on the prepared subsoil and grade evenly, compact lightly and uniformly in 150mm layers. Avoid differential subsidence and excess compaction and produce a finished topsoil surface which has the following characteristics:

- Finished to design levels, allowing for mulch or turf, which is to finish flush with adjoining hard surfaces such as paths and edge;
- Smooth and free from stones or lumps of soil;
- Graded to drain freely, without ponding, to catchment points;
- Graded evenly to adjoining surfaces; and
- Ready for planting.

Compost

Provide, in accordance with AS 4454, well rotted vegetative material or animal manure, free from harmful chemicals, grass and weed growth.

Fertiliser

Provide proprietary fertilisers, delivered to the site in sealed bags marked to show manufacturer or vendor, weight, fertiliser type, N:P:K ratio, recommended uses and application rates.

Plants

Supply plants in accordance with the landscape drawings and schedules, which have the following characteristics:

- Large healthy root systems, with no evidence of root curl, restriction or damage;
- Vigorous, well established, free from disease and pests, of good form consistent with the species or variety;
- Hardened off, not soft or forced, and suitable for planting in the natural climatic conditions prevailing at the site, and in particular shade conditions;
- Grown in final containers for not less than twelve weeks;
- Trees, unless required to be multi-stemmed, shall have a single leading shoot; and
- Containers shall be free from weeds and of appropriate size in relation to their container.

Plant Installation

Following excavation of the planting hole place and spread 15gms of wetting agent pre-mixed with one (1) litre of water. Place the plant correctly orientated to north or for best presentation. Backfill the planting holes with specified topsoil mixture. Lightly tamp and water to eliminate air pockets. Ensure the topsoil is not placed over the top of the rootball. Keep the plant stem at the same height above the ground as it was above the soil in the container. Apply fertiliser, as recommended in the soil testing results or in accordance with the manufacturer's recommendations around the plants in the soil at the time of planting.

Root Barrier

Supply and install root control barriers to all new tree plantings adjacent to walls, paths and all trunk service trenches, where their proximity poses a threat to the stability of the infrastructure. Install in accordance with manufacturer's recommendations.

Mulch

Mulch shall be approved recycled wood fibre or pine bark mulch. Place mulch in all garden beds to a depth of 75mm, after all specified plants are installed. Keep mulch clear of all plant stems and rake to an even surface flush with the

surrounding surfaces evenly graded between design surface levels. Over fill to allow mulch to settle to the specified depth.

Stakes and Ties

Stakes shall be durable hardwood, straight, free of knots and twists, pointed at one end, in the following quantities and sizes for each of the various plant pot sizes:

- Plants (≥25 lt): 1 off 38 x 38 x 1200mm;
- Semi-advanced plants (≥75 lt): 2 off 50x50x 1800mm;
- Advanced (≥100 lt): 3 off 50 x 50 x 2400mm.

Turf

Turf shall be delivered to site as 25mm minimum thick cut rolls. Obtain turf from a specialist grower of cultivated turf. Provide turf of even thickness, free from weeds and other foreign matter. Deliver turf to the site within 24 hours of being cut, and lay it within 24 hours of delivery. Prevent it from drying out between cutting and laying. Lay the turf in the following manner:

- In stretcher pattern, joints staggered and close butted;
- Parallel long sides of level areas, with contours on slopes; &
- To finish flush, after tamping, with adjacent finished surfaces of ground.

IRRIGATION

All proposed landscape areas shall be irrigated.

The irrigation system shall be an automatic fixed drip system, with an irrigation controller self operated via a soil moisture sensor. The system shall be compatible to the type of plant material and rates of water required. Where appropriate adjustable and fully serviceable. The layout of the entire irrigation is to ensure that each individual plant receives the required amount of water to maintain healthy and vigorous growth. The irrigation system shall be such that component theft, vandalism, over-spray and wetting of paths shall be reduced to a minimum or completely eliminated by the use of drip, pop-up sprinklers and judiciously placed fixed spray emitters. Do not use fine mist type emitters that provide a drifting mist that may wet paths and the buildings.

LANDSCAPE MAINTENANCE

The Landscape Contractor shall rectify defects during installation and that become apparent in the works under normal use for the duration of the contract Defects Liability Period. The Landscape Contractor shall maintain the contract areas by the implementation of industry accepted horticultural practices for 52 weeks. The Landscape maintenance works shall include, but not be limited to, the following:

- Replacing failed plants;
- Pruning;
- Insect and pest control;
- Fertilising;
- Stakes and ties;
- Maintaining mulch;
- Mowing and top dressing;
- Irrigation and watering;
- Erosion control; and
- Weeding and rubbish removal.

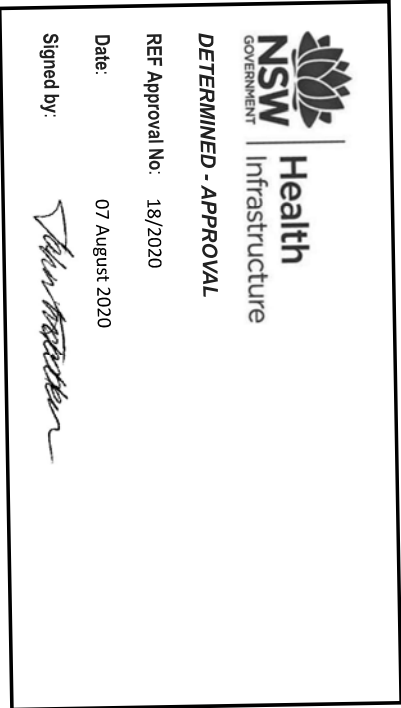
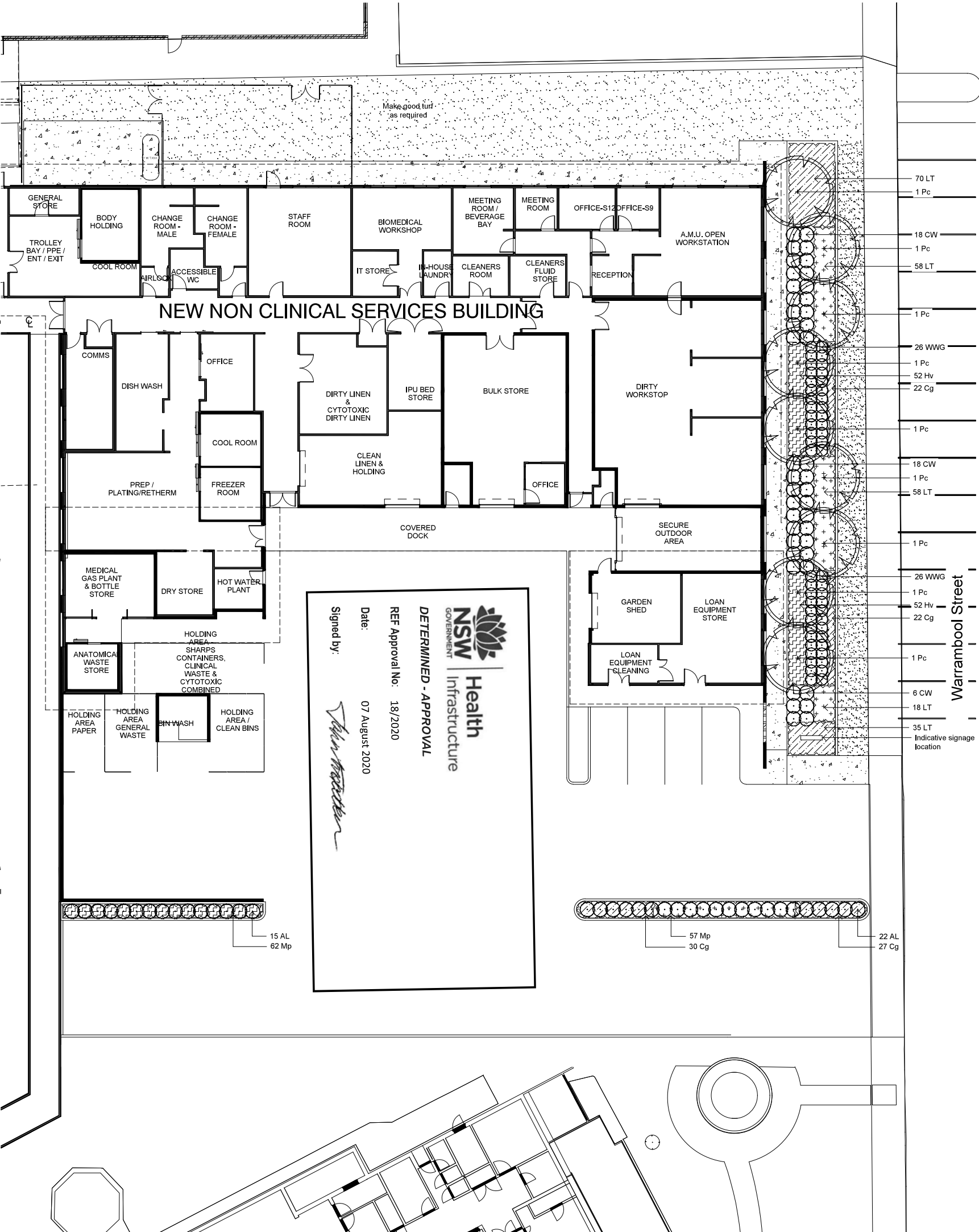
Maintenance Log Book

Implement and keep a maintenance log book recording when and what maintenance work has been undertaken and what materials, actions and decisions have been used, implemented and concluded to keep the landscape always looking its best.

Maintenance Activities

Schedule the following activities to occur on a timely basis.

- Plant replacement** - Replace plants that have failed to mature, die or are damaged. Replacement plants shall be in a similar size and quality and identical species or variety to the plant that has failed. Replacement of plants shall be at the cost of the landscape contractor unless advised otherwise. If the cause of the failure is due to a controllable situation then correct the situation prior to replacing plants.
- Pruning** - Prune dead wood, broken limbs, dead or infected foliage and as needed to develop strong, healthy plants to achieve the shape and form expected of the plant type.
- Insect and pest control** - Avoid spraying:
 - if ever possible;
 - in wet weather or if wet weather is imminent;
 - if target plants are still wet after rain;
 - in windy weather; and
 - if non-target species are too close.Immediately report to the Project Manager any evidence of intensive weed infestation, insect attack or disease amongst plant material. Submit all proposals to apply chemicals and obtain approval before starting this work. When approved, spray with herbicide, insecticide, fungicide as appropriate in accordance with the manufacturers' recommendations. Record in the logbook all relevant details of spraying activities including:
 - Product brand / manufacturer's name,
 - Chemical / product name,
 - Chemical contents,
 - Application quantity and rate,
 - Date of application and location,
 - Results of application, and
 - Use approval authority.
- Fertilising** - Fertilise gardens with a proprietary slow release fertiliser applied in accordance with the manufacturer's directions and recommendations. Record in the logbook all relevant details of fertilising including:
 - Product brand / manufacturer's name,
 - Fertiliser / product name,
 - Application quantity and rate, and
 - Date of application and location.
- Stakes and ties** - Adjust and replace as required to ensure plants remain correctly staked. Remove those not required at the end of the planting establishment period (Defects Liability Period).
- Maintaining mulch** - Maintain the surface in a clean, tidy and weed free condition and reinstate the mulch as necessary to ensure correct depth as specified.
- Mowing and top dressing** - Mow the turf to maintain a grass height of between 30-50mm. Do not remove more than one third of the grass height at any one time. Remove grass clippings from the site after each mowing. Top dress to a maximum of 10mm to fill depressions and hollows in the surface.
- Irrigation and watering** - Maintain the irrigation system to sure that each individual plant receives the required amount of water to maintain healthy and vigorous growth, adjust and rectify as required. Provide additional watering, if necessary.
- Erosion control** - Where necessary, maintain the erosion control devices in a tidy and weed free condition and reinstate as necessary to ensure control measures are effective where deemed necessary.
- Weeding and rubbish removal** - During the plant establishment period remove by hand, rubbish and weed growth that may occur or re-occur throughout all planted, mulched and paved areas. The contractor shall target weeds that are capable of producing a major infestation of unwanted plants by seed distribution. Whenever possible, time weed removal to precede flowering and seed set.



© 2016 Site Image (NSW) Pty Ltd. ABN 44 801 262 380 as agent for Site Image NSW Partnership. All rights reserved. This drawing is copyright and shall not be reproduced or copied in any form or by any means (graphic, electronic or mechanical including photocopy) without the written permission of Site Image (NSW) Pty Ltd. Any license, expressed or implied, to use this document for any purpose what so ever is restricted to the terms of the written agreement between Site Image (NSW) Pty Ltd and the instructing party.

The contractor shall check and verify all work on site (including work by others) before commencing the landscape installation. Any discrepancies are to be reported to the Project Manager or Landscape Architect prior to commencing work. Do not scale this drawing. Any required dimensions not shown shall be referred to the Landscape Architect for confirmation.

B	Early Works Tender	J/W	NM	21.04.2020
A	For Comment	J/D	NM	29.11.2019
Issue	Revision Description	Drawn	Check	Date

- LEGEND
- Existing Tree to be retained
 - Existing Tree to be Removed
 - Tree Number
Refer Allied Tree Consultancy Report 10/18
 - Proposed Tree
Refer Planting Schedule
 - Proposed Shrubs
Refer Planting Schedule
 - Proposed Massed Grasses and Groundcovers
Refer Planting Schedule
 - Proposed Turf
 - Concrete Path
 - Concrete Edge

Client:
Health Infrastructure NSW

Project:
Griffith Base Hospital

SITE IMAGE
Level 1, 3-6 Baptist Street
Redfern NSW 2016
Australia
Tel: (61 2) 8332 5600
Fax: (61 2) 9698 2877
www.siteimage.com.au
Site Image (NSW) Pty Ltd
ABN 44 801 262 380
Landscape Architects

TENDER

Drawing Name:
Landscape Plan
Non Clinical Support Building

Scale: 1:150 @ A1
Drawing Number:
130565-SI-LS-DWG- B37-101

Issue:

B