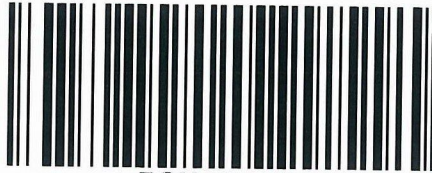




Transport
for NSW



PCU012764

David Gibson
Team Leader
Metropolitan and Regional Projects North
Department of Planning and Infrastructure
GPO Box 39
SYDNEY NSW 2001



Attention: Ben Eveleigh

**DUBBO BASE HOSPITAL REDEVELOPMENT
STAGE 1 AND 2 (SSD 5250-2012)**

Dear Mr. Eveleigh,

Thankyou for your letter dated 19 September 2012 regarding your request for Transport for NSW to provide comment on the Development Application (DA) and Environmental Impact Statement (EIS) for the above proposal.

Transport for NSW (TfNSW) has reviewed the DA and associated EIS and supports the expansion of the Dubbo Base Hospital Site. The Transport Impact Assessment has addressed some of the measures to support and promote the use of public transport / pedestrian access to the site from the surrounding street network and TfNSW encourages an ongoing collaborative approach between Health Infrastructure and Dubbo City Council to deliver seamless infrastructure that ensures bus passengers and pedestrians can alight and be assured of safe and convenient access to the hospital grounds from bus stops on the Golden Highway.

This ongoing collaboration should have regard to the community's accessibility needs, as well as the community's socio-economic profile and need to access public health services by means other than by private car.

These matters have been covered in greater detail in the following attachments.

Should you have any questions regarding this matter, please contact Aleks Tancevski on 8202 2811 or Aleks.Tancevski@transport.nsw.gov.au

Yours sincerely,

pec

Mark Ozinga
Manager, Land Use and Transport Planning
Planning and Programs

CD12/17035

Proposed Internal Roadways

TfNSW encourages collaboration between Health Infrastructure and Dubbo City Council to facilitate appropriate intersection works the alteration of the internal roadways to cater for buses entering the hospital site and turning on site.

If buses had the opportunity to enter the hospital site, this would go a long way to alleviate the existing unsafe and inconvenient access to the hospital from bus stops located on the surrounding street network, whereby hospital patients, staff and visitors travelling to the hospital by bus must cross two to three roads (including the Golden Highway) to access the hospital, whilst using pedestrian pathways that may not have been designed to modern standards. This in turn will help to minimise walking distances and increasing the attractiveness of using bus services to access the hospital.

Transport for NSW considers the proposed redevelopment of the hospital to be an excellent opportunity for the alteration of the configuration of internal roadways within the hospital site and suggests that the proposal be amended to include an internal road network that ensures buses have the opportunity to enter the hospital site and turn on site as displayed in **Attachment 1**.

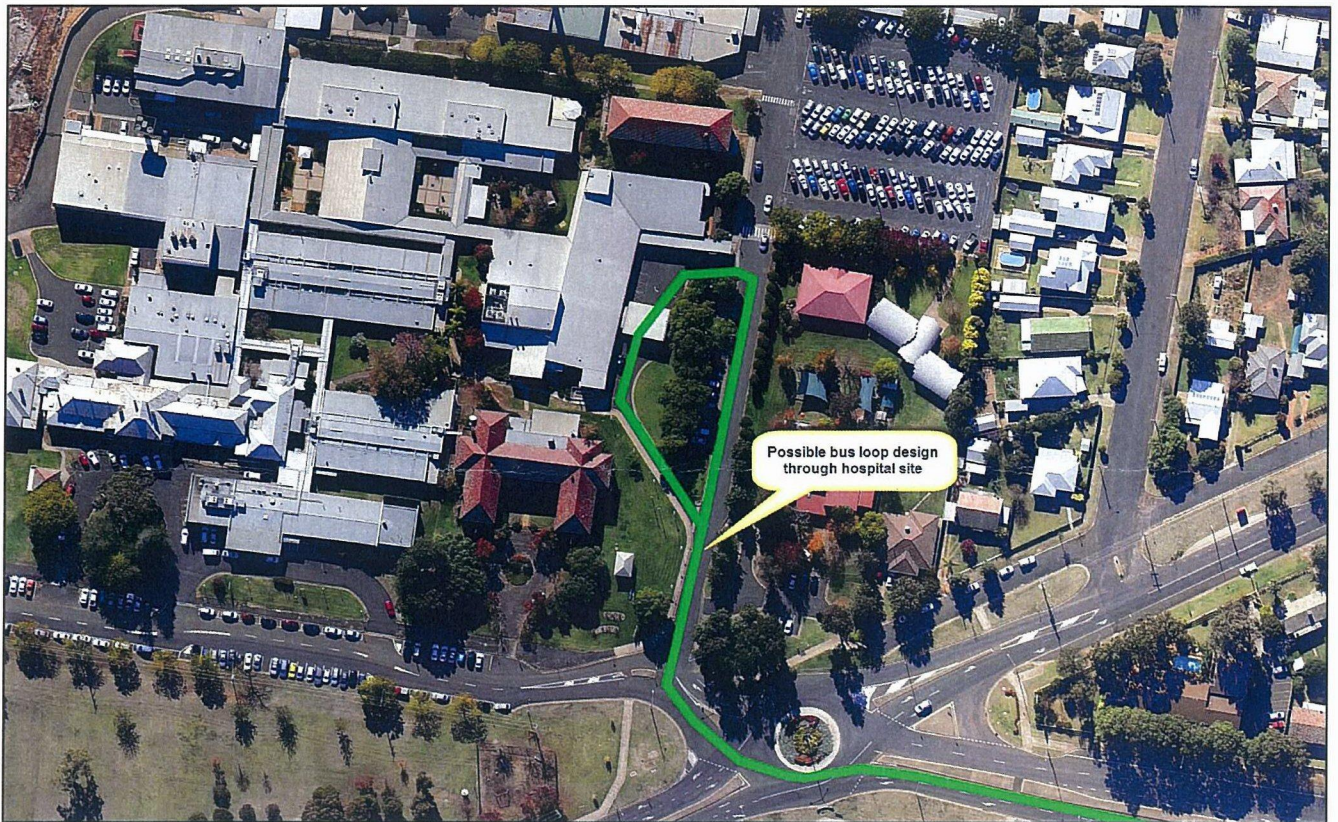
In addition to the above a sheltered accessible bus stop could be provided on the hospital's designated bus service roads. This should be in the immediate vicinity of the entrance of the main hospital building, helping to minimise walking distances for hospital patients, staff and visitors. The bus stop could also be designed to accommodate community transport services including community transport buses and cars. Designated bus service roads within the hospital site and intersections and round-a-bouts on bus service roads should be designed to adequately and safely accommodate bus manoeuvrability.

Pedestrian Access and Bus Stops on the Golden Highway

TfNSW would encourage proponent collaboration with Dubbo City Council so that pedestrian access to bus stops on the Golden Highway from the hospital site is safe and seamless. This would form a strong link from the hospital to local bus routes such as the 571 which provides links to many areas including the Dubbo CBD, Manera Heights, Apollo, Eastridge and Lourdes Hospital. Bus route 571 also allows for interchange in the Dubbo CBD with other bus routes serving other parts of Dubbo.

Furthermore, pedestrian access to the hospital's visitor entrance from the bus stops on the Golden Highway could be improved with the provision of sufficient street lighting, level footpath connections and adequate pedestrian road crossings. Suggested transport infrastructure improvements which could be undertaken as part of the proposal are displayed in **Attachment 2**.

Attachment 1 – Suggested Bus Loop Design through Hospital Site



Attachment 2 – Required Transport Infrastructure Improvements

