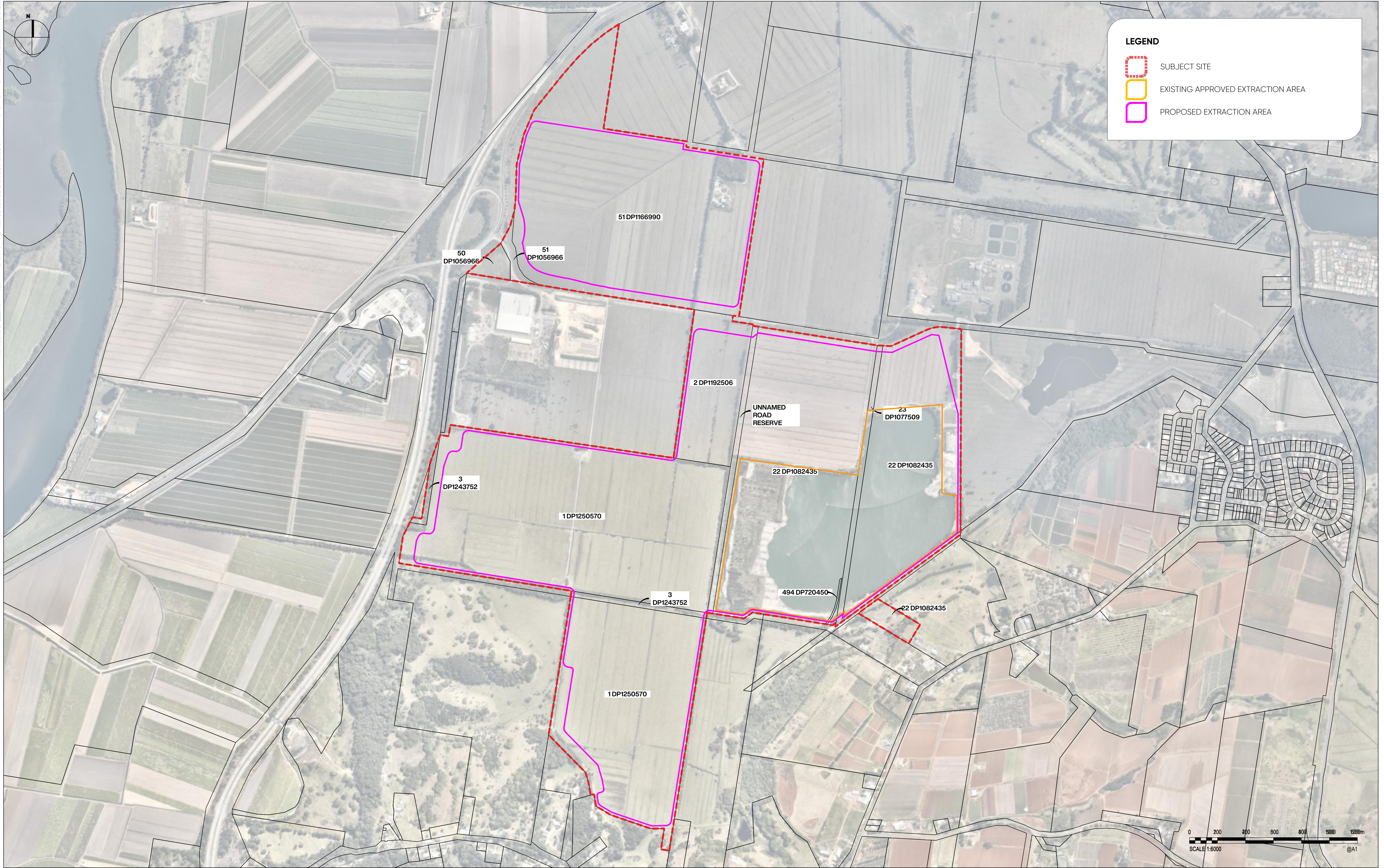


FILENAME: L:\Jobs_2019\19078_Hanson Tweed Sand Re-Development\5_Design Documentation\ES_FIGURES - Revised\A1\OUT_1\esenv003.dwg | PLOTTED: 10/20/2021 1:33 PM



PROJECT TITLE

HANSON TWEED SAND PLANT EXPANSION PHASE 5 TO PHASE 11

ENVIRONMENTAL IMPACT STATEMENT

DRAWING TITLE

FIGURE 3: EXISTING & PROPOSED HTSP FOOTPRINT

REV	DESCRIPTION	DATE	DRAWN	DESIGN	CHECK	APPROVED
A	PRELIMINARY ISSUE	17/03/21	ZP	LN	LN	LN
B	RPI ISSUE	13/10/21	ZP	LN	LN	LN
C	RPI AMENDMENTS	20/10/21	ZP	LN	LN	LN

ISSUE:

PRELIMINARY

CLIENT:

HANSON CONSTRUCTION MATERIALS PTY LTD

BASE PROVIDED BY:

SIXMAPS DCDB

MANAGER:

LANCE NEWLEY

COPYRIGHT Zone Planning Group 2018. This document and the information are solely for the use of the authorised recipient and this document may not be used, copied or reproduced in whole or part for any purpose other than that for which it was supplied by Zone Planning Group 2018. Zone Planning Group makes no representation, undertakes no duty and accepts no responsibility to any third party who may use or rely upon this document or the information.

ZONE PLANNING GROUP

GOLD COAST
1638 Tweed Street, Burleigh Heads QLD 4220
PO Box 3805, Burleigh Town QLD 4220

GLADSTONE
2/172 Goodnoo St, Gladstone, QLD 4680
PO Box 5332, Gladstone QLD 4680

zonelandscape.com.au | 07 55622303

JOB / DRAWING NO:

Z19163- F103

SHEET NO.

SHEET 03 OF 21