



# **NSW Institute of Applied Technology for Construction (IATC)**

(Formerly Construction Centre of Excellence)  
Community Communications and Engagement

---

**Client:** TAFE NSW

**Date:** 30 April 2021

---

**Contact:**

Petra Fowler  
petra.fowler@elton.com.au  
0428 247 913

---

**SYDNEY**

Level 27, 680 George Street, Sydney

---

www.elton.com.au  
consulting@elton.com.au  
Sydney | Brisbane | Canberra | Darwin | Melbourne | Perth  
ABN 56 003 853 101

---

<b>Prepared by</b>	Petra Fowler
--------------------	--------------

---

<b>Reviewed by</b>	
--------------------	--

---

<b>Date</b>	30 April 2021
-------------	---------------

---

<b>Version</b>	DRAFT V1
----------------	----------

---

# Contents

<b>1</b>	<b>OBJECTIVE</b>	<b>3</b>
<b>2</b>	<b>HOW WE ENGAGED</b>	<b>4</b>
<b>3</b>	<b>WHO WE ENGAGED</b>	<b>5</b>
<b>4</b>	<b>WHAT WE HEARD</b>	<b>6</b>
4.1	Education and resources	6
4.2	Parking and safety	7
4.3	New building design	7
4.4	Temperature control	7
4.5	Amenities	7
4.6	Construction impacts	7
4.7	Other	7

# 1 Objective

Communications and engagement carried out to support the planning process for the proposed NSW Institute of Applied Technology for Construction (IATC), in Western Sydney, was designed to ensure community members and stakeholders were aware of the proposal and had the opportunity to make comment to inform planning.

TAFE NSW is committed to engaging with the campus community, neighbours and other stakeholders throughout the design phase and future delivery of the project.

Between March and April 2021, which includes the public exhibition of the SSDA, staff, students, industry and community were provided with opportunities to learn more about the project, speak with the project team and provide their feedback. These comments have helped to refine and develop the final plans that were lodged with the Department of Planning, Industry and Environment as a State Significant Development Application and the response to submissions.

## 2 How we engaged

### Communications tools

#### Project webpage

<https://www.tafensw.edu.au/instituteofappliedtechnology>

The webpage includes:

- » An overview of the project
- » Link to the State Significant Development Application with opportunity for comment
- » Project timeline
- » Community engagement
- » TAFE NSW Industry Partnership Opportunities
- » How to contact the project team

#### Project information panels / factsheets (Appendix A)

Five information sheets were prepared for use as printed storyboards for pop up events, upload to webpage, basis of presentations or printed handouts:

- » Vision
- » Purpose
- » Key design features
- » Site
- » Sustainability

#### Project postcard (Appendix B)

The postcard was used to engage with community, campus community and other site neighbours. Information included:

- » Information about the proposal
- » SSDA public exhibition and opportunity to make comment
- » Where to find out more and contact the project team

#### Letterbox drop

- » Postcard

#### Direct contact – email and phone

#### Pop-up information and feedback sessions

- » Project team members engage using information panels to share information, respond to questions and hear feedback

## 3 Who we engaged

### Site neighbours

Local residents, neighbouring developer and NSW State Archives were engaged to:

- » inform them of the proposal and where to find out more
- » advise about the SSDA and public exhibition with opportunity to make comment
- » provide contact details for any questions.

#### Letterbox

Postcard was letterboxed to about 100 neighbouring residents and businesses on 23 March 2021.

#### Direct contact

- » Legacy Property, the developer of the neighbouring Caddens Hill development, was contacted by email and phone and a briefing offered.
- » NSW State Archives were contacted by phone and email and a briefing offered.
- » Western Sydney University (WSU) and Caddens Corner Shopping Mall (owned by WSU) are site neighbours and WSU as a key stakeholder was engaged by the project team during initial planning and throughout. Details of engagement are included in the response to submissions report.

### Campus community

Staff and students using the Nepean-Kingswood campus were engaged to:

- » inform them of the proposal and where to find out more
- » respond to any questions and gather insights
- » advise about the SSDA and public exhibition with opportunity to make comment
- » provide contact details for any questions.

#### All staff email

An email was sent to all campus staff members with project background and invitation to staff and students to visit the project webpage and attend one of the pop up sessions on 30 March. Project team contact details were also provided.

#### Pop-up information and feedback sessions

Pop ups were held on campus on Tuesday 30 March 2021 throughout the day in three locations, Library, Canteen and Gallery.

The team engaged with about 60 staff and students on the day and an email was received from an attendee following the sessions.

#### Postcards

Postcards were left at key locations on campus and with campus management. Postcards provide details of project webpage and how to contact the project team.

#### Campus Teams Online Group

The Campus Teams Group will be used as an additional point for more detailed project information and updates as planning progresses.

### Other

- » There was also significant media associated with the launch of the NSW Government Institutes of Applied Technology.

## 4 What we heard

### Site neighbours

- » No feedback or questions were received from community members
- » Engagement continues with Legacy Property who indicated support for the project and the desire to keep their property owners informed as the project progresses
- » NSW State Archives did not want a briefing and raised no concerns

### Campus community

The key issues raised.

#### 4.1 Education and resources

- » Several positive comments about the course offerings in construction trades, feeling these are a good choice for the campus
- » Ensure quality access to information resources and librarian support is included for students within the IATC, noting:
  - > IATC is located across campus from the existing Library and Interactive Learning Centre
  - > Existing services during business hours to 6pm only, noting the need for more flexibility due to demands on students work / study / short breaks between classes
  - > Information needs specific to construction students
  - > Technology needs specific to construction students and usual TAFE NSW IT support nearby
  - > Remote library assistance available from campus library; telephone, LibChat service and Ask a Librarian service

Suggestions include:

- > Bring library services to the IATC and all hour resources, consider:
  - vending machines for text books and study material
  - virtual support
  - click and collect and scan and deliver using parcel lockers
- > Integration of a librarian to support teaching and development of information literacy skills, possibly delivering:
  - support for development of teaching content
  - tutorials
  - virtual office hours
  - assistance in the identification and linking of course content
- > Deconstructed library services
  - plug-in library services in different configurations across the IATC
  - provide study tables and booths in libraries for individual and group work also noting evening trade students utilise library study spaces between work and evening class

- provide tech enabled student service support point for key services with personnel rostered to designated times across the week / teaching term and targeted support at orientation and assessment time

#### **4.2 Parking and safety**

- » Parking capacity with increased demand from additional students
- » Availability of the parking near T and P Blocks
  - > Access to nearby carpark
  - > Consider approaching WSU about access to their carpark located near T and P Blocks
  - > Driver and pedestrian safety around carpark
- » Improve connectivity to the existing underutilised carparks in the north-west corner of the site, direct access between remote carparks and the IATC
- » Many trade students attend campus in work vehicles carrying expensive tools, secure parking in line of sight is preferred
- » Consider parking fees to encourage car-pooling, however noting this can lead to peer pressure

#### **4.3 New building design**

- » Several comments supporting the new building

#### **4.4 Temperature control**

- » Questions about temperature control in the new building, with concerns about potential lack of temperature management incorporated

#### **4.5 Amenities**

- » Suggestion to include a Student Services Hot Desk
- » Suggestion for a food truck outside the building under cover, 'TAFE de Wheels'

#### **4.6 Construction impacts**

- » Impact on access to campus and parking
- » Impact on campus operations

#### **4.7 Other**

- » Several questions about the fate of the kangaroo mob that inhabits the adjacent vacant block

#### **Other feedback**

- » The Office of the Building Commissioner was supportive of the new Institute of Applied Technology for Construction and expressed interest in finding out more about the proposal and how to support the project.



# Appendix A – Information Sheets



# THE VISION

The Institute of Applied Technology for Construction (formerly the TAFE NSW Construction Centre of Excellence) will be a signature construction training hub, equipping the next generation of trades workers with advanced and cross-disciplinary construction and digital skills that are fundamental to building smart cities.



The Institute of Applied Technology for Construction is a flagship educational centre with state-of-the-art simulated workplace environments and maker spaces delivering specialist, industry-embedded training in disciplines that are critical to future jobs.

Designed within the TAFE NSW Nepean Kingswood Campus, this prime location will support the pipeline of major infrastructure projects, civil construction works, and residential developments set to transform Western Sydney including the Western Sydney Airport and Aerotropolis, the North-South Rail Link, the Northern Gateway Precinct, as well as future projects to service Western Sydney's fast-growing population. It is also ideally located adjacent to the Western Sydney University Werrington South Campus and near local high schools.

## The Institute of Applied Technology for Construction will:

- + Be a signature construction training hub aligned to industry
- + Create an agile and adaptive education environment to address the rapidly growing and evolving skills gaps in the economy
- + Foster a network between schools, VET, universities, and industry to co-design future-focused courses and innovative training models
- + Deliver early exposure to students through Institute of Applied Technology/schools programs and exclusive access to the latest technologies
- + Enable upskilling and reskilling of workers throughout their lifelong journey
- + Improve accessibility through digitally-enabled facilities that allow for virtual classes in remote and regional communities across NSW.

## WHERE WE ARE AT IN THE PLANNING PROCESS

WE ARE HERE

- **Schematic Design Phase – October 2020 to March 2021**
  - » Key stakeholder engagement.
- **Planning Approval Phase – Commencing March 2021**
  - » State Significant Development Application (SSDA) submission
  - » Public exhibition.
- **Detailed Design Phase – Commencing April 2021**
  - » Key stakeholder engagement.
- **Contractor Procurement Phase – Commencing April 2021**
- **Construction Phase – Late 2021 to March 2023**





# THE PURPOSE

Transforming the current approach to education, the Institute of Applied Technology for Construction will establish clear pathways between schools, VET and higher education, with partnerships across industries such as construction, carpentry, plumbing and electrical. The approach will ensure students are provided with holistic skillsets to take advantage of the employment opportunities created by the strong infrastructure pipeline and ongoing industry demands.



The Institute of Applied Technology will support the construction sector in boosting productivity and efficiency through the adoption of technology and enhanced trades and significantly alleviate the skill gap for works related to the \$20 billion of public funding being invested in the Western Sydney Airport, Aerotropolis, and surrounding precinct.

## The intention is to deliver:

- + Pathways from school through to VET and university, and into employment
- + Progressive industry education
- + Real partnerships to ensure training is highly responsive to industry skills demand and delivers relevant content
- + Simulated workplace environments with leading, purpose-built facilities and specialist industry equipment for real-life practical experience.

## Benefiting:

- + **Students** – by delivering training opportunities that will qualify them for jobs of the future, through early introduction
- + **Industry** – by providing job-ready, skilled candidates, upskilling existing employees aligned to market trends and jobs growth and expanding local capabilities and competitiveness
- + **Higher Education** – by creating a closer link with higher education institutions to develop mutually beneficial training opportunities, early exposure to technology for our youth, and real-life applications for graduates
- + **The State** – by delivering skill acquisition for construction jobs of the future to support economic and Industry growth
- + **Wider community** – through the positive social and economic contributions of increased opportunities for skills development, employment, sustainability in construction and infrastructure delivery.



# KEY DESIGN FEATURES

Set into the landscape of the TAFE NSW Nepean Kingswood Campus, the Institute of Applied Technology for Construction is located right at the heart of Western Sydney’s exciting infrastructure transformation.

**Some of the key design features of the building are:**

- + Collaborative, future focused and technology rich learning environments
- + Flexible design to allow for change in demand and technology
- + Industry standard workshops and equipment
- + Enhanced student learning through the visual built form
- + Australian Excellence 5 Star Green Star rating showcasing sustainability in construction.

## ARCHITECTURAL DESIGN PRINCIPLES

“The design of the Institute of Applied Technology for Construction is grounded in evidence-based research, informed by international exemplars and developed through contemporary learning.

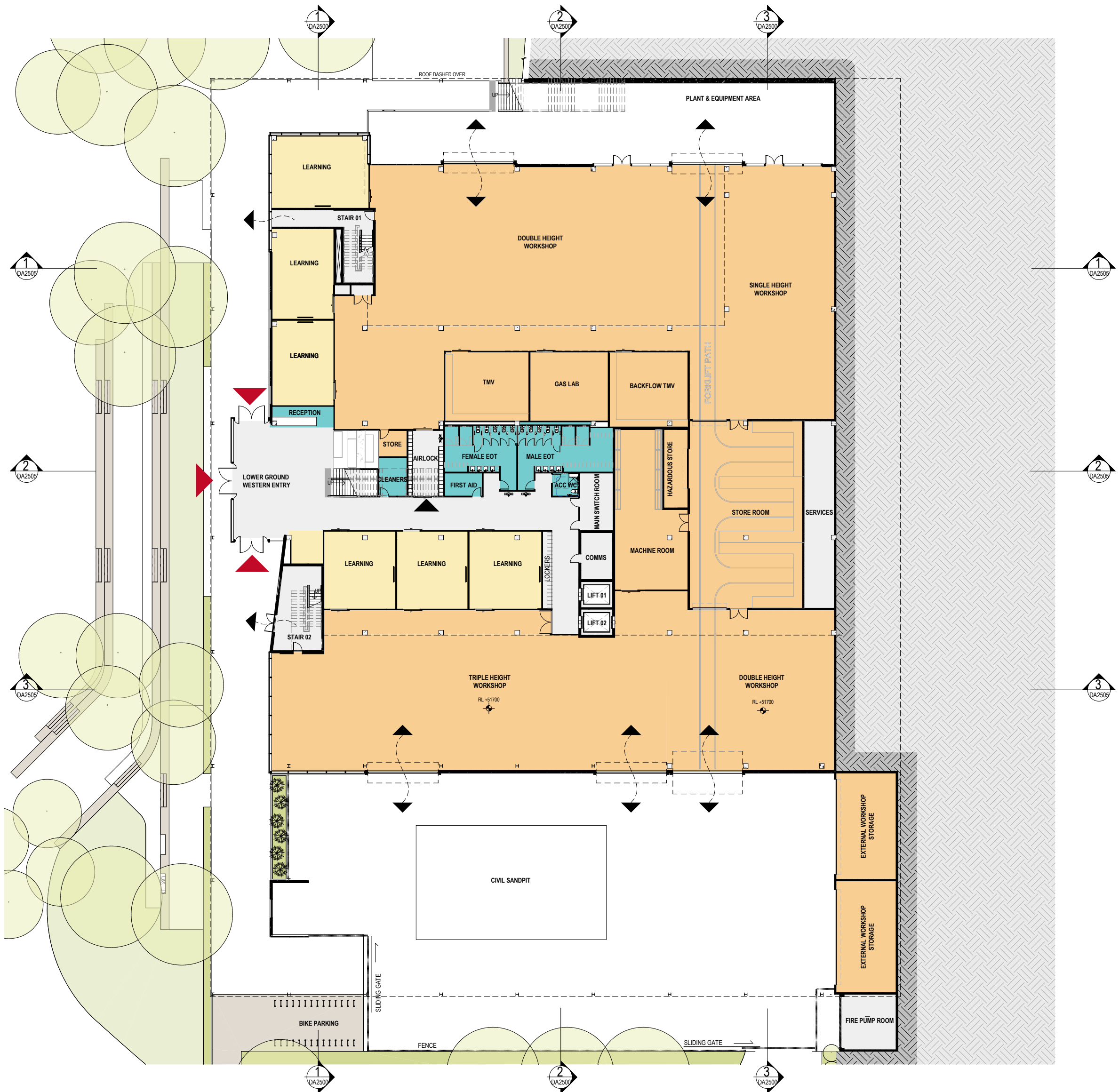
The siting and design of the building is informed by its local topography and contextual relationship with the overall TAFE NSW Campus and Western Sydney University Werrington South Campus.

The building has been envisaged as a true ‘building in the round’ with each façade activated via strong connection to the activity within. The building’s two and three level rise on the East and West orientation respectively, is a direct response to the sloping topography.

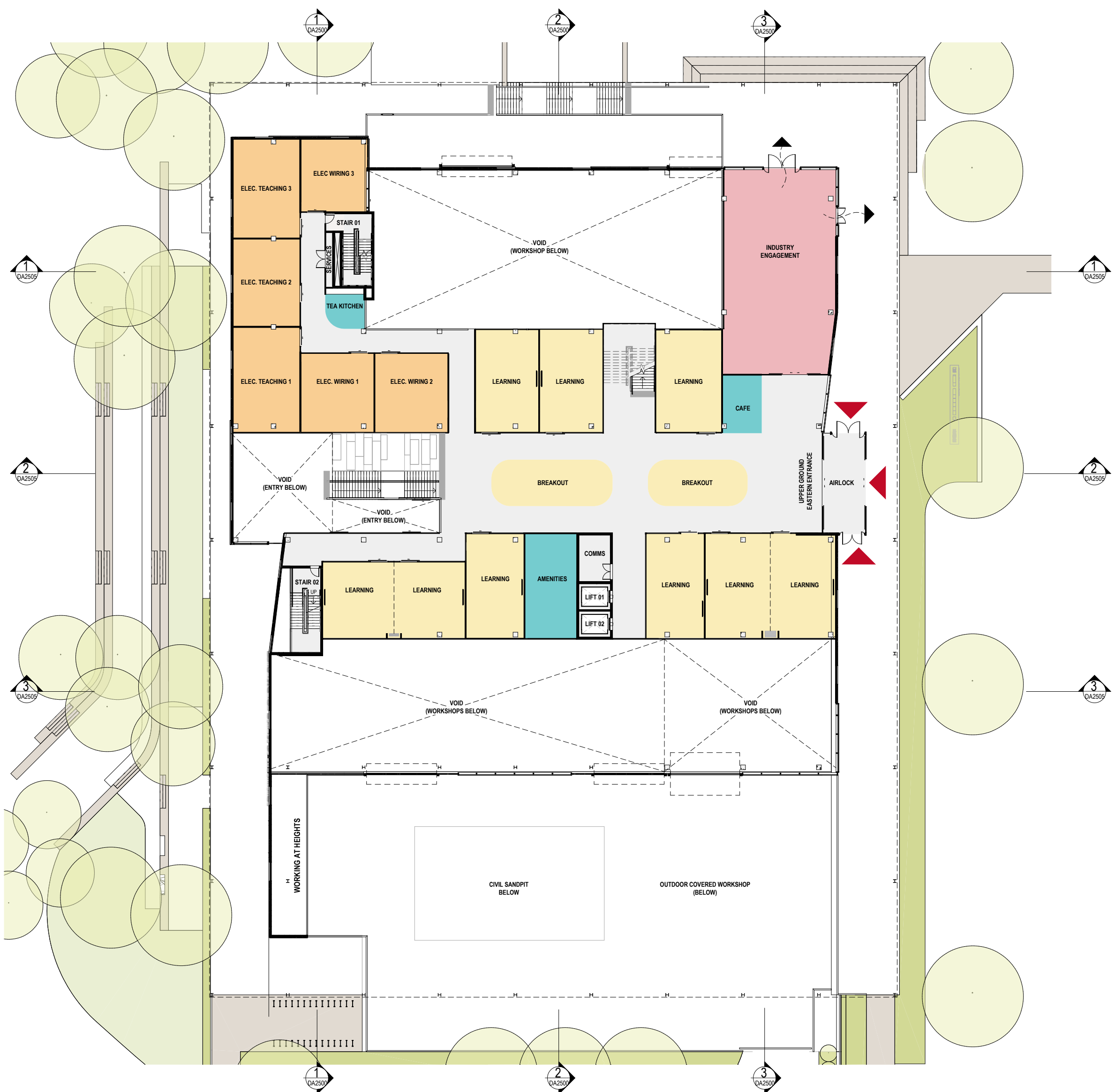
The East facade provides a civic and welcoming interface with Western Sydney University, whilst the taller facade to the West maximises the viewing opportunity to the dividing ranges beyond, as well as extending the internal spaces and activities to the landscape.

The aesthetic treatment is sympathetic to its location, yet displays the quality of being an arbor and gateway to the future of construction education and training. As such, the overall composition, structure and material selection embody a degree of confidence and robustness. It is true to its form and materiality that speaks of rawness and industrialism.”

Proposed Lower Ground Floor plan



Proposed Upper Ground Floor plan



Proposed Level 1 plan

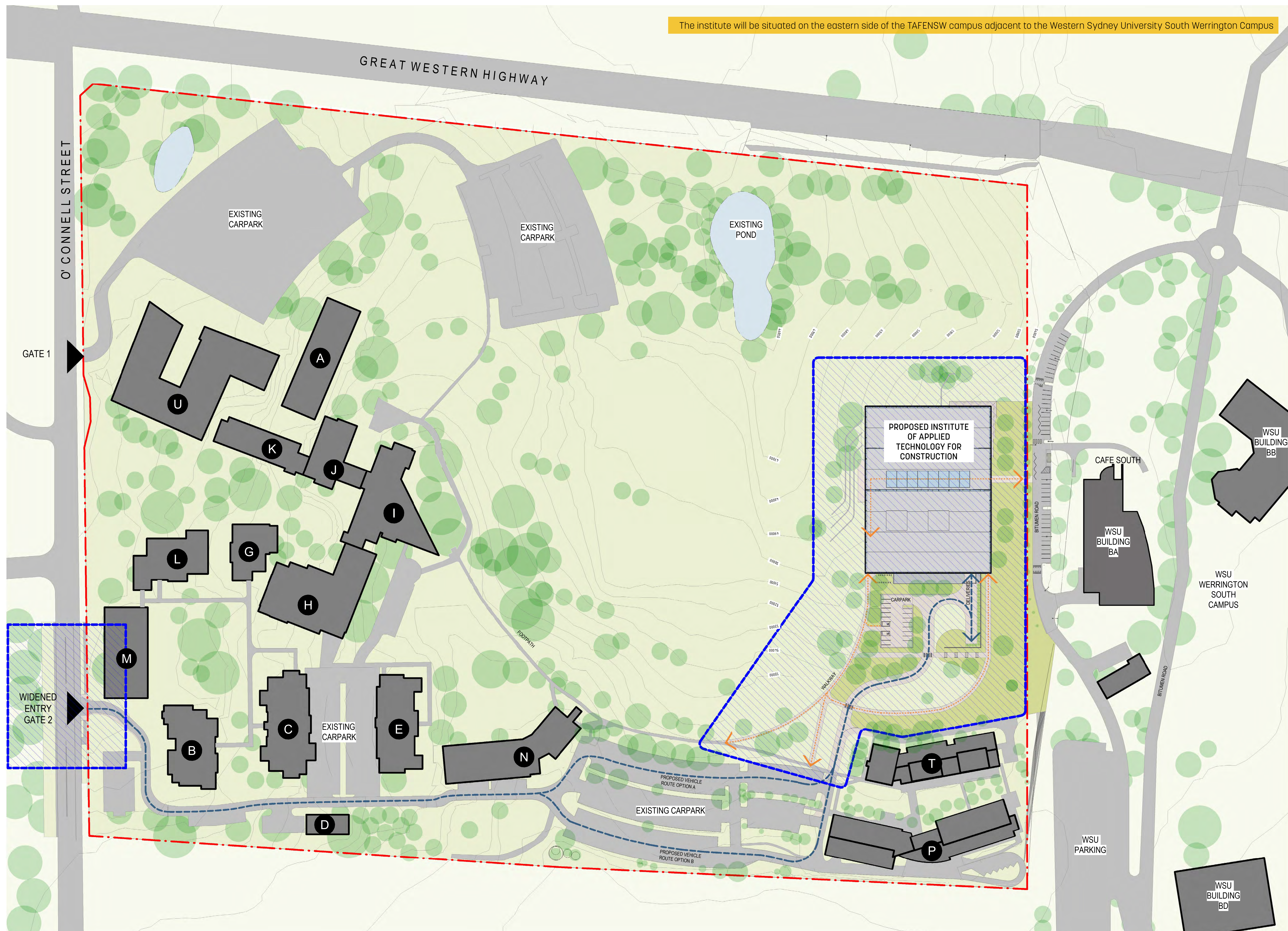


### LEGEND

- WORKSHOP
- LEARNING SPACE
- WORKSPACE
- INDUSTRY ENGAGEMENT
- AMENITIES / OTHER
- CIRCULATION / SERVICES



# THE SITE



## LEGEND

EXISTING PEDESTRIAN ACCESS

EXISTING VEHICULAR ACCESS

A EXISTING BUILDING NAME

PROPOSED VEHICULAR ROUTE CARPARK RECONFIGURATION

PROPOSED PEDESTRIAN PATH

EXTENT OF SSD SCOPE

PROPOSED ROADS WALKWAYS AND RECONFIGURED CARPARK

EXISTING ROADS, WALKWAYS AND CARPARKS



# SUSTAINABILITY

TAFE NSW is committed to designing and constructing a sustainable facility to best serve the community in the Western Sydney climate.

**Some of the key initiatives incorporated in the new Institute of Applied Technology for Construction are:**

- + Leading practice 5 Star Green Star sustainability rating
- + Extended roof shading over windows allowing natural light and views out of classrooms
- + Photovoltaic Cells (solar panels), energy efficient lighting and a smart energy management system
- + Water efficient taps and toilets throughout the building, rainwater and grey water harvesting.
- + Low chemical, healthy indoor environments to assist student learning.



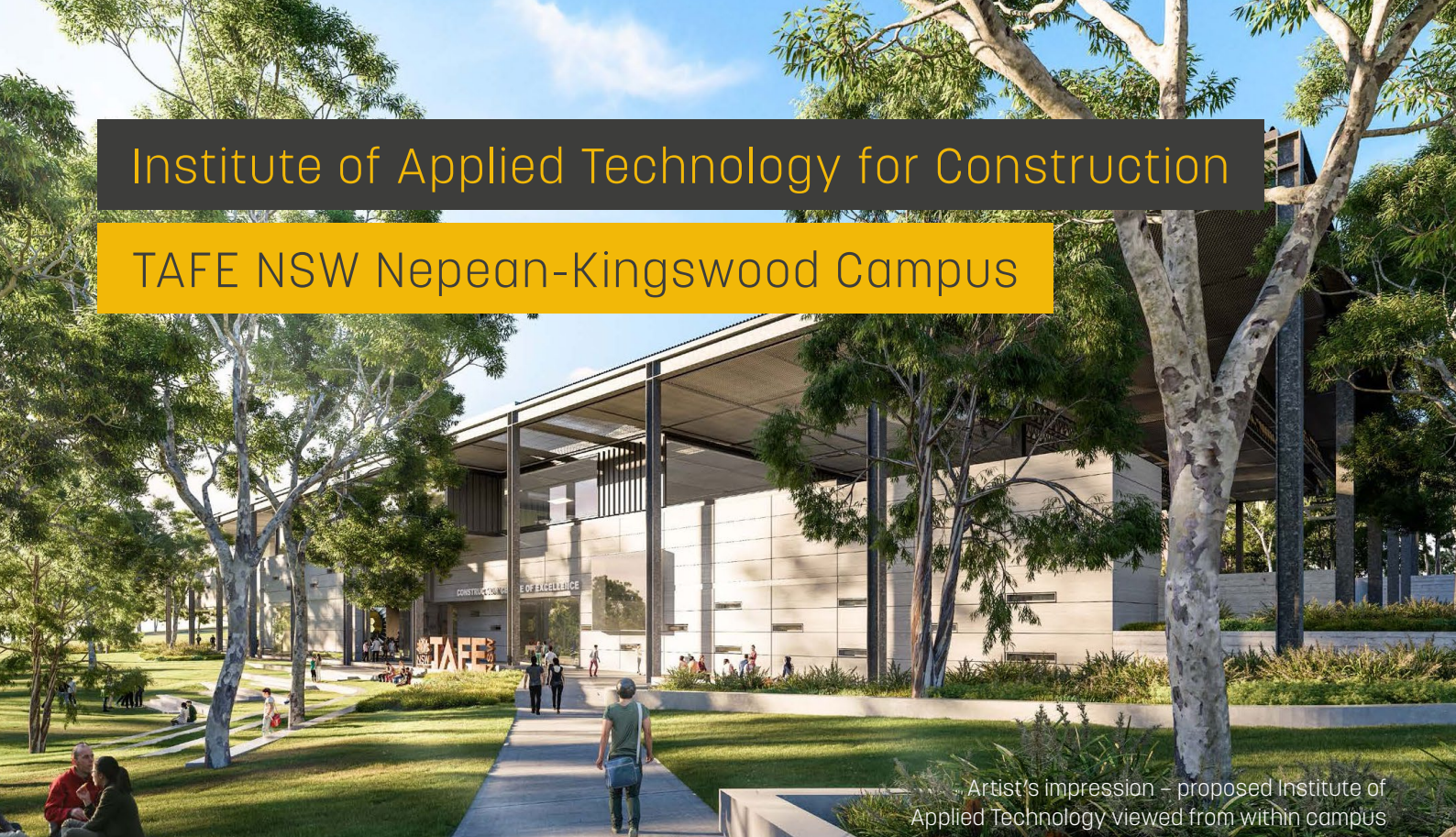
Proposed Institute of Applied Technology for Construction showing extended roof shading and solar panels



# Appendix B – Postcard

# Institute of Applied Technology for Construction

## TAFE NSW Nepean-Kingswood Campus



Artist's impression – proposed Institute of Applied Technology viewed from within campus



**TAFE**NSW



# A new Institute of Applied Technology for construction trades (formerly TAFE NSW Construction Centre of Excellence) is being developed in Western Sydney.

The NSW Government is delivering an Institute of Applied Technology at the existing TAFE NSW Nepean-Kingswood campus.

The Institute of Applied Technology for Construction will be a signature construction training hub, equipping the next generation of trades workers with advanced and cross-disciplinary construction and digital skills that are fundamental to building smart cities.

## Where we are at


Plans for the new Institute of Applied Technology for Construction have been lodged with the Department of Planning, Industry and Environment and are on public exhibition for comment.

You can view the State Significant Development Application (SSDA) and make formal submission until **Wednesday 14 April 2021** at [planningportal.nsw.gov.au/major-projects/projects/on-exhibition](https://planningportal.nsw.gov.au/major-projects/projects/on-exhibition)

Find out more

Contact the project team

 [iat@tafensw.edu.au](mailto:iat@tafensw.edu.au)

 1800 752 142



**TAFE**<sup>NSW</sup>

