



PCU030877

Department of Planning
Received
21 FEB 2012
Scanning Room

Submission for The Tarrawonga Coal Mine Extension (ML 1579)
Environmental Assessment

DA-88-4-2005 MOD 1

11 0047 Application No:

From JE & RJ Picton,

723 Dripping Rock Rd

Boggabri, 2382 NSW ph: 0267434506

Email: bollo1@bigpond.com

Attention: Director of Major Infrastructure Assessments

Department of Planning

GPO Box 39

Sydney NSW 2001

We refer to the application for the Tarrawonga Coal expansion which seek approval of the Tarrawonga Coal Project.

We own the following properties in the Narrabri Shire:

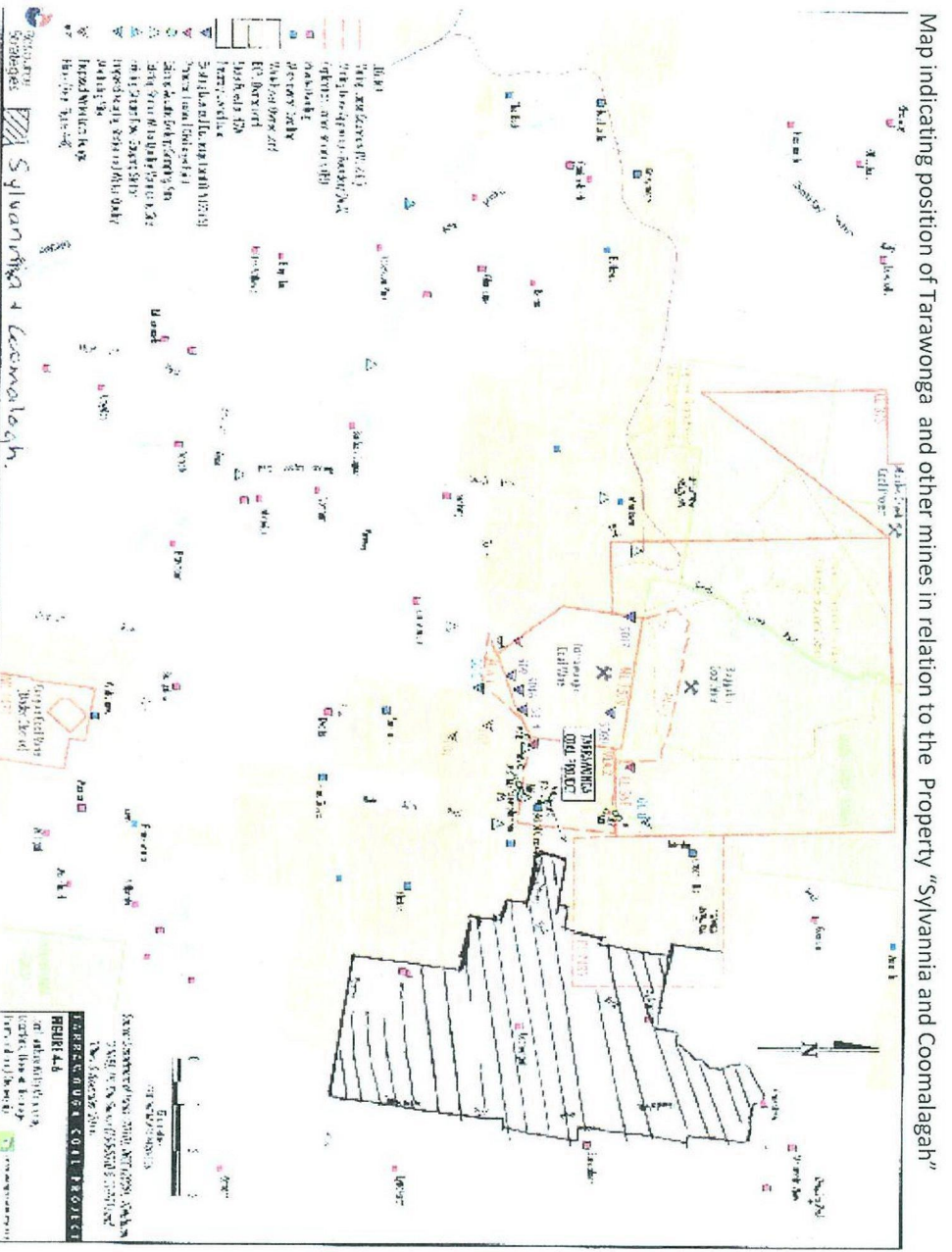
Coomalagh , 458 Dripping Rock Road, Boggabri

Sylvannia , 723 Dripping Rock Road, Boggabri

We submit the following concerns.

We are neighbours that boarder the Tarrawonga mine to the East. Our property is made up of Coomalagh and Sylvania. The Tarrawonga expansion is causing us great concerns in regard to Noise, Air Quality, Water contamination, both surface and underground water, traffic increases and the shifting of the Goonbri Creek. The mine is moving to the East and North and it is impacting on our environment and Lifestyle in many ways. We are being used as an Agricultural Land Barrier to the East of this project as no other properties have been purchased in the Eastern vicinity as a buffer zone. Below are the issues we would like to raise.

Firstly why are we not included in the impact purchasing zone when we boarder the mine site area in the project?



Environmental Conditions:

NOISE:

The monitoring system being used is inefficient and cannot provide sufficient data. Since monitoring which started in June 2011 taken place at Sylvannia the data which was collected indicated that the dogs, birds etc were clearly vocal and mine noise was over ridden by this noise. The monitor was moved away from the house in to the farming paddock but no data has been reported back to us for appraisal. Some noise was audible as mine noise but not for the required 15 minutes until interrupted by animal noises which breaks the required noise. The monitor was moved to another homestead on our property but again no results have been shown to us.

In June on the 23rd and 24th Spectrum Acoustics monitored the noise at our house. We told them it was not a noisy evening but they continued as required by Boggabri Coal. It indicated mine noise to be at a variable level. At 8.20pm it showed 29 decibels and 12.15 23 decibels and at 5.39am it was 30 decibels.

The data collected from Spectrum Acoustics was taken over a three night interval of 15 minutes at a time. This data is used to predict the noise at the homesteads for the next 16 years projections. What about the cumulative effect with Aston, Boggabri Coal and Roc Glen and may be Big Ben Enterprises? With greater employees and bigger machinery which has increased in number and doubled in size, how can the noise predictions taken on the 23rd and 24th of June 2011 for 15 minute intervals be accurate for the next 16 years predictions. Whitehaven have not shown us the collected data for these predictions! Over a six week period no credible data was collected with the real time monitor for "Sylvannia" but three nights can make predictions for 21 years. This monitoring is too abstract to be able to predict so far into the future. Also noise levels vary depending on seasonal conditions thus we disagree with projection lines on the maps in the EA. (maps 4.12.1, 4.12.2 and 4.12.3) There are many days and evenings at this time in the mines life cycle that we can hear them very loud and clear. Even the Environmentalist from Boggabri Coal stood in our garden one morning and said "That noise from our mine is Intrusive on you lifestyle." This information clearly is not projected on the Noise maps in the EA report for the years to come.



DUST MEASURING DEVICE



BOGGABRI COAL
PTY LIMITED

Abs: 14 322 984 595

Abs: 14 322 984 595
Fax: 14 322 984 595

Boggabri 54 km
255 Land Forest Rd
Boggabri NSW 2382
Australia

PO Box 12
Boggabri NSW 2382
Australia

Telephone:
Tel: 14 322 984 595

Facsimile:
Tel: 14 322 984 595

Ref: 07 057 491

23 January 2012

"Sylvania"
BOGGABRI
NSW 2382

Dear Robynne

RE: BOGGABRI MINE DUST MONITORING RECORDS

Please find below the updated data for the deposited dust gauges located between "Sylvania" and the Boggabri Coal Mine.

This data covers the December reporting period from 15 November to the 14 December 2011.

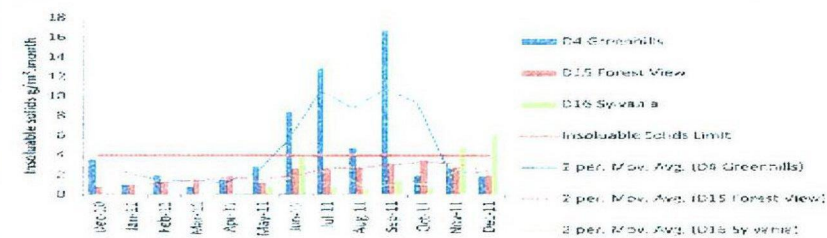


Figure 1: 13 month dust monitoring records for locations between Boggabri Mine and "Sylvania"

ALS	EN1103458	Coal	Description	Dirt	Insoluble Solids	Vegetation
Sample		%		%	%	%
D4 (24)	14/12/2011	5	Light/Medium	20	35	40
D15 (25)	14/12/2011	5	Light/Medium	21	25	15
D16 PICTON	14/12/2011	5	Heavy	25	40	30

Figure 2: ALS visual analysis of dust samples for monitoring sites located between Boggabri Mine and "Sylvania"

Figure 2 shows a visual analysis from Australian Laboratory Services (ALS) for the sites already mentioned above from 15 November - 14 December 2011.

DUST MONITORING EQUIPMENT:

Dust emissions from the Tarrawonga mine have been increasing. We have results from Boggabri Coal which verify the monitoring results for the last 13 months.

June, Nov and December 2011 indicated high results for Sylvania. No

explanation has been given for this data. Our monitor is not in the Tarrawonga Report . We are D16 not in the results in table 4.21 in EA projections and data results.

The effectiveness of the Dust Monitor which is provided for us is primitive and effectively useless. We have records and photos of dust drifting through the timber and pumping out of the Tarrawonga mine on many occasions. The blast plume has drifted over our property and house on many occasions.(photo of Dust monitor provided)

This greatly disturbs us in regard to our health. The monitor only catches dust that actually settles down from the air into the glass flask. The monitor does not work in high wind speeds and that is when we are smothered in dust at times. July 2011 was a particularly dusty time for Tarrawonga but the results for those months were low. Very fine particles are not trapped in this monitor but are able to get into our lungs and cause damage. Higher results for dust were in the wetter months . A cumulative effect can also be created for us as Boggabri Coal are close and soon Aston.(Photos provided to illustrate dust in air and around mine)



The effects from blasting must increase as the mine moves to the east as we will join it at the mine site area. The mine is going to operate 24hrs a day and 7 days a week, it will impact on our lives, animals, air quality, health particularly as we work on our family property attending to agricultural work.

Low Permeability Barrier 2.10.3:

In figure 4-6 The Goonbri Creek is depicted as a dry creek but the local people are aware that at times it can be a raging , forceful flooded river which can rise quickly and cause a lot of damage when combined with Bollol Creek.(see photos attached).



Figure 4.8 from Tarrawonga Submission.



Photos taken by Robynne Picton after heavy rain February 2012. Flooding occurred and the damage has been destructive to roads and fencing. This is the same creek as shown in EA photos above .

We are concerned that the moving of the Goonbri Creek and the Building of the Barrier is going to cause a lot more water down Bollol further up the creek and force water over on to our cultivation causing flooding , erosion and stock losses. Movement of the Goonbri Creek to the East will create concerns with a huge amount of surface water to join with Bollol which now has split in two and flows down the Dripping Rock road .The extra flow will cause a lot more damage to the road and back up into the floodplain, the barrier will cause back up of the water which flows in the creek and water flow from Goonbri mountain basin. This will will flood and erode farm country. We disagree that the movement of the creek will benefit the neighbours and not produce effects to cultivation ,farmland , road structure and access to Boggabri for the residents that live up Dripping Rock RD due to a greater volume of water cutting the road and limiting access.

Bollol Creek in Flood in 2012



Goonbri Creek will feed into this creek closer to Dripping Rock road.

Water flow down Goonbri and Bollol Creek along Dripping Rock Rd



Contamination.

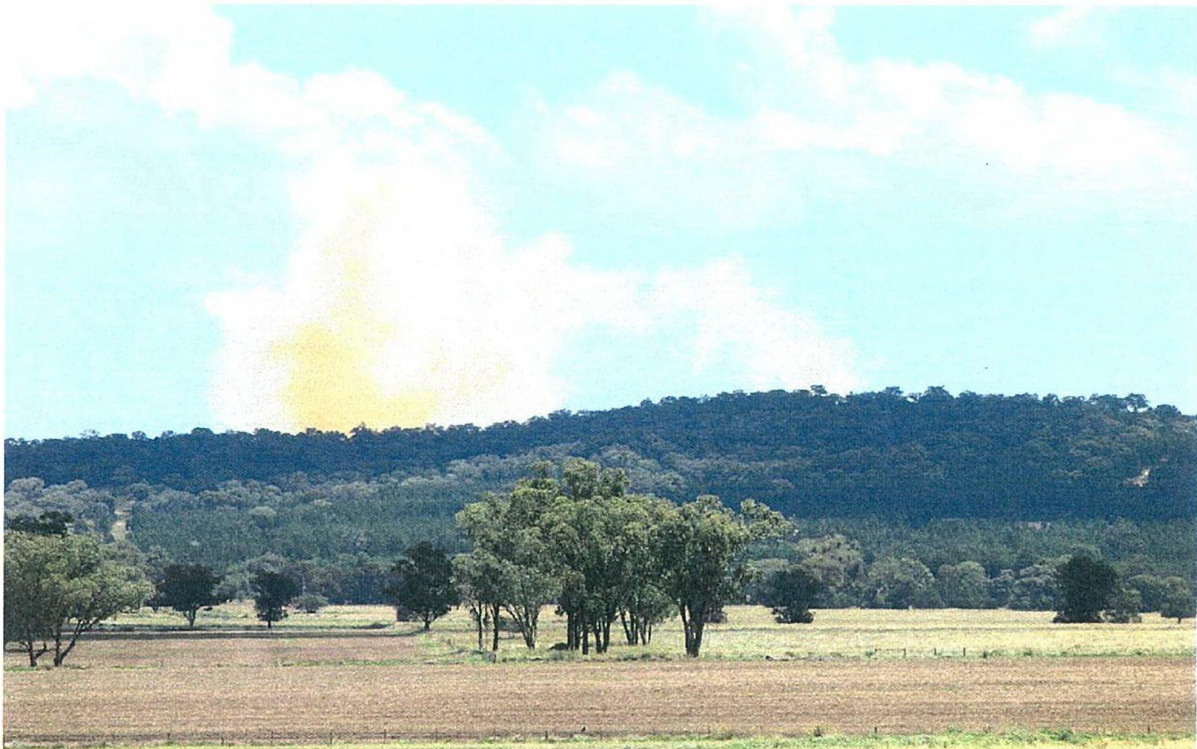


Contamination of the creeks from mine site.

The water flows from Tarrawonga mine site on regular intervals when it rains, as this picture shows water is running out of the mine and down the Dripping Rock Road over into Bollol Creek. Heavy rain in February 2012 caused a wall in the mines dam to burst and overflow into Bollol Creek, contamination could be seen in the water flowing into the nearby creek which flows down Barbers lagoon and into the Namoi River. This is indicative of our concerns that contamination can occur regularly and affect our local environment. Stated in the EA on ES1 (best practices of management with relations to neighbours) Is this best practice??

Health

Due to the information and photographic evidence above, our families health has become a concern living in this close environment. The air quality is a major health concern for my family as our property is situation on the boundary of many mines and also surrounded by mountain ranges which traps the contaminated air in which we have to breathe. Studies have proven that each step fo the coal life cycle: mining, transportation, washing, as well as combustion, and disposing of post combustion wastes, have impacts on human health. (Dr. W.M. Castleden MS, FRCS, FRACS Retired, Vascular Surgeon (Past Chairman Doctors for the Environment, Australia). Alan, H. Lockwood, MD FAAN - Coals Assault on Human Health. We are told in the EA that if all development s proceed in this area than 30 million tonnes of coal could be extracted each year. Obviously mining means a lot to our Governments Economically, Jim and myself can not compete financially with such huge companies and the mineral boom. But we were living here before the Tarrawonga Mine started and would have liked to stay and build an enterprise for our families also as we have been in Agriculture for 5 generations , its in our blood.



Plume which floated over our house.

The Tarrawonga Coal Mine EA study indicates We are not in the Effected Zone so will not be purchased by Tarrawonga . We are significantly effected by the invasion of the mines in this valley and find it difficult to understand that we have to prove this time and time again when from the information I have provided is adaqute enough. We request as a part of the conditions of this expansion that Tarrawonga along with Boggabri Coal and Aston be required to buy our property , Sylvannia and Coomalagh for a fair and reasonable price. Our property is surrounded by Tarrawonga, Roc Glen , Idemitsu , Aston , Big Ben Enterprises , Canyon coal mine and Coal works . These mines were not operational when we purchased our property and decided to build our future . Property values are invalid due to the invasion of mines now and in the future to come. This invasion has changed the Social conditions, environmental status and the Health conditions of this valley which was once a scenic ,relaxed, clean environment to live and to work in which has now vanished.

Please take the time to make decisions that affect my familys lifestyle, health and livelihood in to great consideration.

from

Robynne and Jim Picton