

GLENCORE

10 March 2017

The Secretary
Department of Planning and Environment
GPO Box 39
Sydney NSW 2001

Dear Secretary,

Submission on Hunter Valley Operations South Modification 5 - Progression of Mining

United Collieries Pty Limited (United) is owned 95 percent by Abelshore Pty Limited, a wholly owned subsidiary of Glencore Coal Pty Limited (Glencore) and 5 percent by the Construction, Forestry, Mining and Energy Union (CFMEU) and is managed by Glencore. Wambo Coal Pty Limited (Wambo) operates the neighbouring Wambo mining operations.

In 2014 United and Wambo announced their intention to form a joint venture to develop open cut coal resources, to be managed by United. A development application for the United Wambo Open Cut Coal Mine Project was submitted by United to the Department of Planning and Environment (DP&E) on 8 August 2016 (SSD_1742). The United Wambo Open Cut Coal Mine Project is located immediately adjacent to the Hunter Valley Operations South (HVO South) Project Modification 5.

United's land interests in the area are held by Glencore and by the CFMEU on behalf of United.

Reference is made to the Environmental Assessment for the Hunter Valley Operations South - Modification 5 (EMM February 2017) Figure 3.7 (Attachment 1). It is noted that the "HVO South project approval boundary" and the "Approved disturbance associated with major activities" shown in Figure 3.7 both encroach on land held by Glencore and the CFMEU, and also on land within the proposed project area for the United Wambo Open Cut Coal Mine Project.

The areas of encroachment on the Glencore and CFMEU land are shown in Attachment 2 and the land details are as follows.

Lot and DP	Landowner
1//1043120	Glencore Coal (NSW) Pty Limited
1//770904	Glencore Coal (NSW) Pty Limited
1//770905	Glencore Coal (NSW) Pty Limited
1//782299	Glencore Coal Pty Limited
134//566275	CFMEU
186//755267	Glencore Coal (NSW) Pty Limited
2//770904	Glencore Coal (NSW) Pty Limited
2//835812	CFMEU
3//770904	Glencore Coal (NSW) Pty Limited
3//835812	CFMEU
4//635392	CFMEU

Private Mail Bag 8, Singleton, NSW 2330

567 Broke Road, Singleton, NSW 2330

T + 61 2 6570 2416 F + 61 2 6570 2520 www.glencore.com

Glencore Coal Assets Australia Pty Limited ABN 48 163 821 298

GLENCORE

Lot and DP	Landowner
4//770904	Glencore Coal (NSW) Pty Limited
4//835812	CFMEU
40//755267	Glencore Coal (NSW) Pty Limited
41//755267	Glencore Coal (NSW) Pty Limited
5//247239	CFMEU
5//770904	Glencore Coal (NSW) Pty Limited
6//247239	CFMEU
7//247239	CFMEU
7//770904	Glencore Coal (NSW) Pty Limited
8//247239	CFMEU


There is no commercial agreement between Glencore, United or the CFMEU and Coal and Allied to allow any works to be undertaken on land held by Glencore or the CFMEU for the purposes of the HVO South project.

In the absence of a commercial arrangement between the relevant parties, United does not consider it appropriate or desirable to have overlapping project approval boundaries for separate mining developments.

Finally, we note that Wambo also holds land that forms part of the United Wambo Open Cut Coal Mine Project and some of this land is within the HVO South project approval boundary.

Should you require any further information or clarification please do not hesitate to contact the United Project Manager Mr Gary Wills on 02 6578 9500 or gary.wills@glencore.com.au.

Yours sincerely,

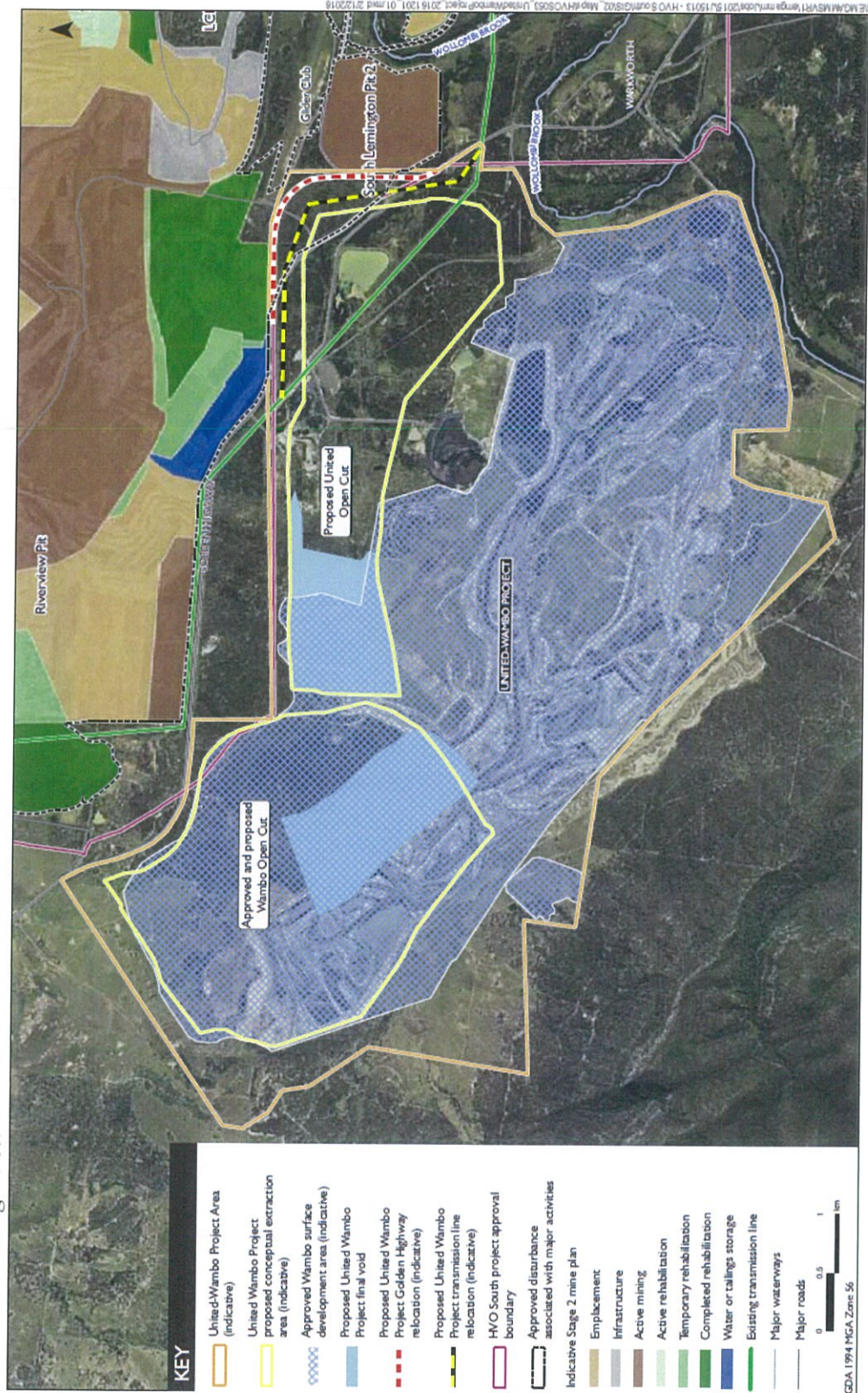


Mike Carrucan
Director - Development and Projects, Coal Assets, Australia
Glencore

Telephone: +61 2 6570 2400

Direct: +61 2 6570 2470

Mobile: +61 407 920 483



Proposed modification and United Wambo Project
HVO South Modification 5
Environmental Assessment

Figure 3.7

Private Mail Bag 8, Singleton, NSW 2330

567 Broke Road, Singleton, NSW 2330

T+61 2 6570 2416 F+61 2 6570 2520 www.glencore.com

Glencore Coal Assets Australia Pty Limited ABN 48 163 821 298

GLENCORE

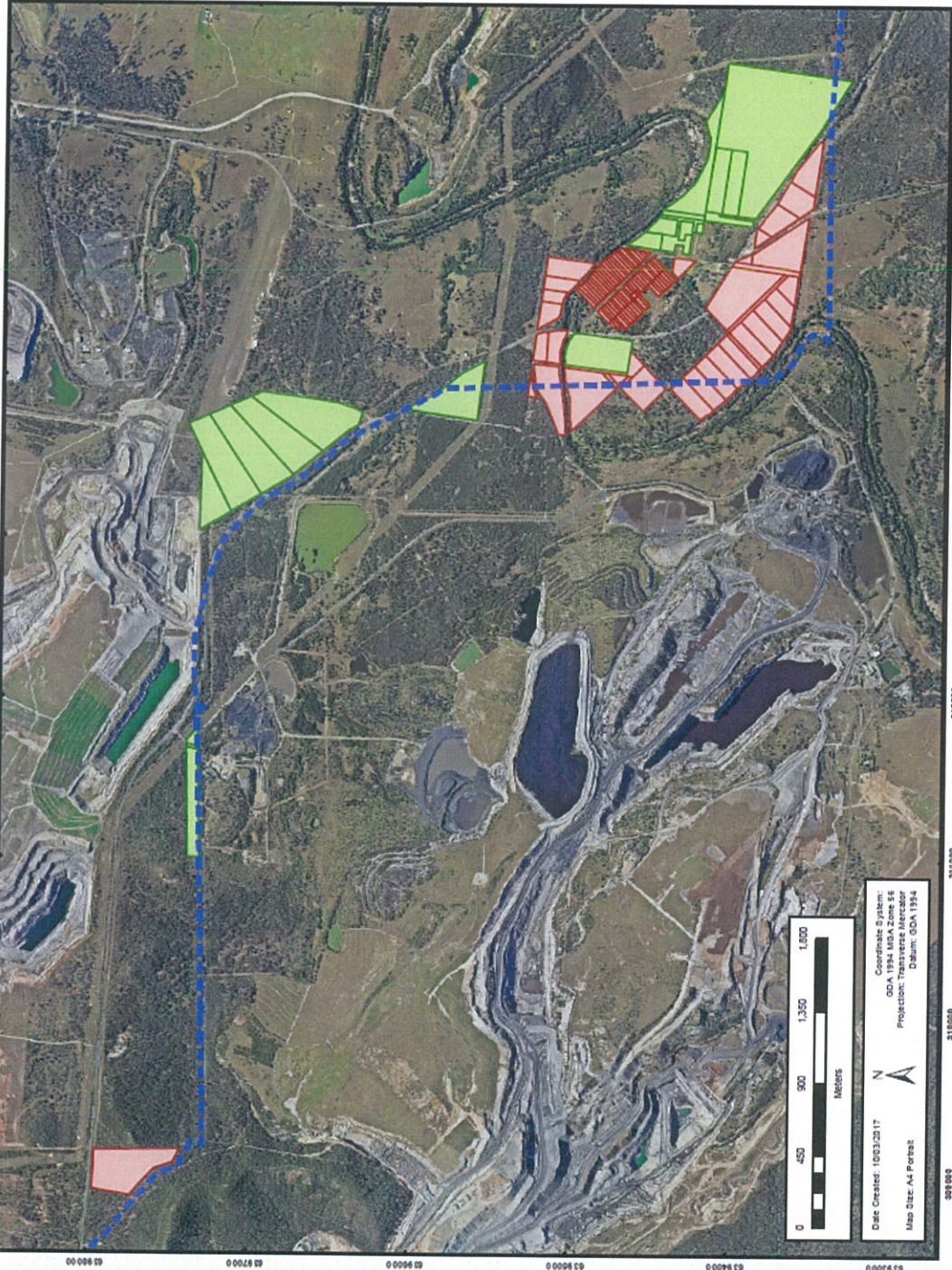
Attachment 2 – Areas of encroachment

United Collieries

United-Owned Land within HVO South Project Approval Boundary

GLENCORE

Coal Assets Australia
www.glencore.com



DISCLAIMER
Subject To Survey
Glencore makes every effort to ensure the quality of the information available on this map. Before relying on the information on this map, users should carefully evaluate its accuracy, currency, completeness and relevance for their purposes, and should obtain any appropriate professional advice. Glencore cannot guarantee and assumes no responsibility for the accuracy, currency or completeness of the information displayed on this map. You accept that Glencore has no liability for any loss or damage in any form whatsoever caused directly or indirectly from the use of this map.

DATA SOURCE
© NSW Department of Finance & Services (LPI) 2015
© NSW DITIRIS (Minerals & Petroleum) 2015
© Glencore 2015 © ESRI 2015