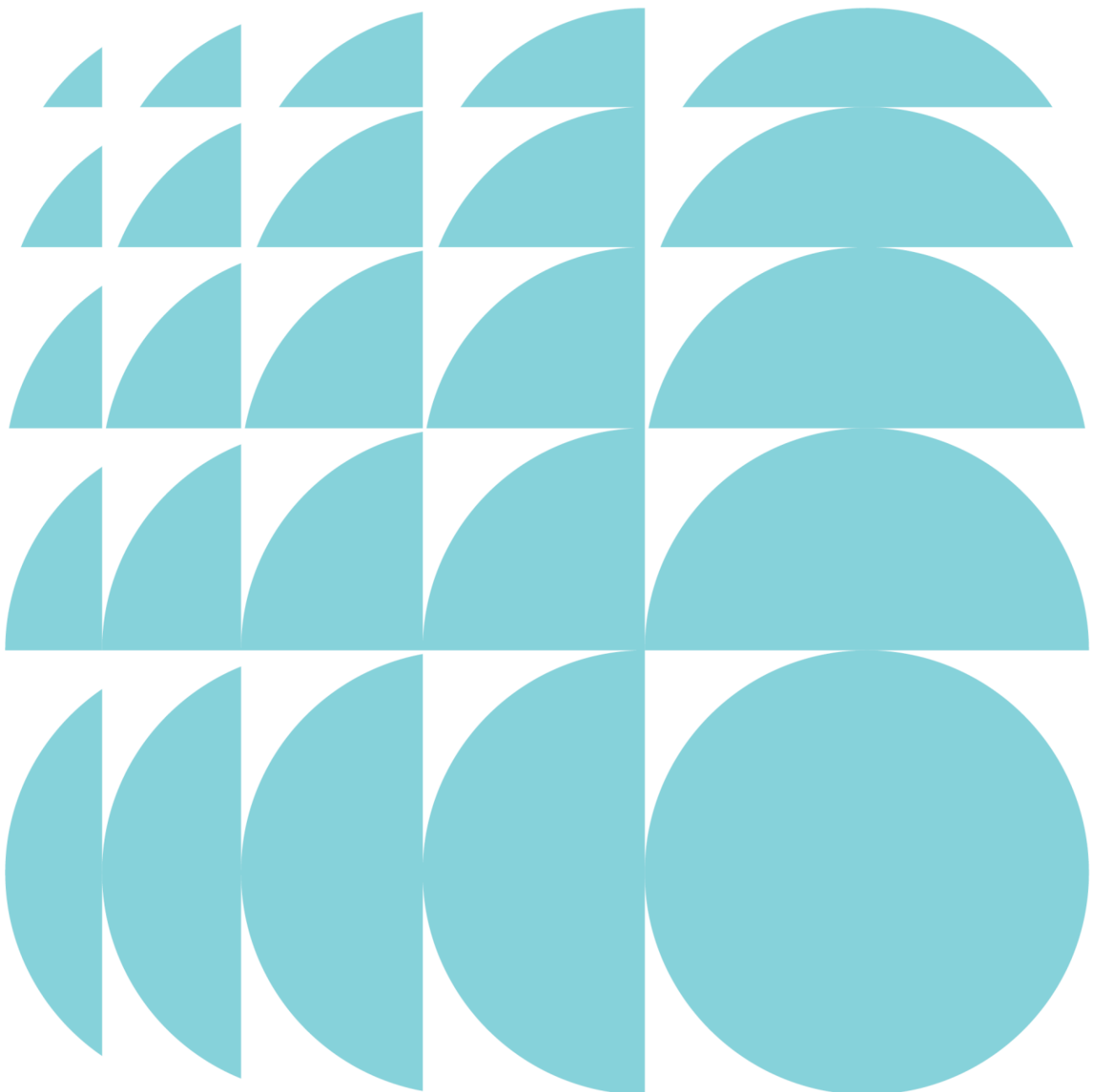


Stage 2 State Significant Development  
Development Application

Sydney Football Stadium Redevelopment  
40-44 Driver Avenue, Moore Park

Submitted to Department of Planning, Industry  
and Environment  
On behalf of Infrastructure NSW

15 August 2019 | 2190202



---

#### CONTACT

Fee Chemke-Dreyfus	Associate Director	fchemke@ethosurban.com	+61 430 337 607
--------------------	--------------------	------------------------	-----------------

Reproduction of this document or any part thereof is not permitted without prior written permission of Ethos Urban Pty Ltd.

This document has been prepared by:



Ira Brenner

15.08.19

This document has been reviewed by:



Nina Macken  
Fee Chemke-Dreyfus

15.08.19  
15.08.19

Reproduction of this document or any part thereof is not permitted without written permission of Ethos Urban Pty Ltd. Ethos Urban operates under a Quality Management System. This report has been prepared and reviewed in accordance with that system. If the report is not signed, it is a preliminary draft.

---

VERSION NO.2

DATE OF ISSUE 15.08.19

REVISION BY

APPROVED BY

---

Ethos Urban Pty Ltd  
ABN 13 615 087 931.  
www.ethosurban.com  
173 Sussex Street, Sydney  
NSW 2000 t 61 2 9956 6952

---

# Contents

---

1.0	Introduction	2
2.0	Consultation activities during formal Exhibition of the EIS	2
3.0	Outcomes and feedback of Stakeholder Consultation	3
4.0	Conclusion	5

## Appendices

- Appendix A** – Stakeholder letters
- Appendix B** – Stakeholders contacted
- Appendix C** – Distribution range of postcard
- Appendix D** – Flyer
- Appendix E** – Project update

## 1.0 Introduction

Infrastructure NSW has submitted a State Significant Development (SSD) Development Application (DA) for the Sydney Football Stadium Redevelopment (SSD-9835).

This Public Exhibition Consultation Outcomes Report (the Report) has been prepared by Ethos Urban on behalf of Infrastructure NSW to provide a detailed report of the consultation undertaken during the formal exhibition period of the Environmental Impact Statement (EIS) that supports the SSD DA.

Communication and engagement was undertaken to ensure that interested stakeholders were aware of the formal public exhibition period, understood how to lodge a submission and had access to relevant information to inform their submission. The consultation built upon the earlier consultation activities that Infrastructure NSW had completed prior to lodgement of the SSD DA and EIS to the Department of Planning, Industry and Environment for public exhibition.

## 2.0 Consultation activities during formal Exhibition of the EIS

The statutory public consultation process for the SSD DA was initially held between Wednesday, 19<sup>th</sup> June 2019 and Wednesday, 17<sup>th</sup> July 2019. The consultation period was extended by one week by the Department of Planning, Industry and Environment after it became aware that its Major Projects website had potentially encountered technological issues which had potentially prevented submissions from being made.

During the public consultation period, the project team undertook a number of consultation and engagement activities to ensure local residents and interested stakeholders were aware of the formal public exhibition and understood how to lodge a submission.

Activities included:

- Wednesday, 19<sup>th</sup> June 2019 letters were emailed to 28 stakeholders providing them with an update on the planning process and offering a meeting with the project team to discuss the project and provide feedback. Follow up emails were issued Tuesday, 7 July 2019 if a response had not been received. Three stakeholders accepted the meeting request, and all others either did not respond or did not want to meet. Infrastructure NSW met with 20 of these stakeholders during the pre-lodgement Stage 2 Consultation program, and consequently, a number of stakeholders including NRL, Rugby Australia, University of Technology Sydney, Entertainment Quarter, Saving Moore Park, and Kira KU Childcare indicated a meeting was unnecessary as they had a sufficient understanding of the project. A copy of the letter can be found in **Appendix A** and a copy of the full list of stakeholders contacted can be found in **Appendix B**.
- Wednesday, 19<sup>th</sup> June 2019 a meeting was held with the Sydney Football Stadium Redevelopment Community Consultative Committee (CCC). There are 9 members on this Committee, including Councillors from the City of Sydney and Randwick City Council, local residents, and interested community members. The meeting provided the group with information on how to make a submission as well as provided an update on the Stage 2 Planning process. A summary of the feedback can be found in Section 3.0.
- Thursday, 20<sup>th</sup> June 2019 a project update was emailed to the distribution list which included all interested community members (259) who registered their details at an information session during the Stage 1 and/or Stage 2 consultation programs, or had previously contacted the project team. The project update announced the Stage 2 public exhibition period dates and provided instruction on how to lodge a submission, along with information on upcoming demolition works. A copy of the project update can be found in **Appendix E**.
- Monday, 24<sup>th</sup> June 2019 a postcard was distributed to 23,000 local residents to the same distribution range as the Stage 2 pre-lodgement consultation program, which can be found in **Appendix C**. The flyer announced the Stage 2 public exhibition period dates and provided instruction on how to lodge a submission, along with information on upcoming demolition works. A copy of the flyer can be found in **Appendix D**.
- Thursday, 11<sup>th</sup> July 2019 a stakeholder meeting was held during the formal exhibition period with Fox Studios Australia. A summary of the feedback can be found in Section 3.0.



- Tuesday, 6<sup>th</sup> August 2019 a stakeholder meeting was held with the Centennial Parklands Community Consultative Committee (CP CCC). A summary of the feedback can be found in Section 3.0
- Friday, 23<sup>rd</sup> August 2019 a further meeting with the Sydney Business Chamber is due to proceed. It was originally arranged during public exhibition but was postponed at the agreement of both Infrastructure NSW and the Chamber due to conflicting schedules.
- Regular updates to the project website at <http://insw.com/sfs> to provide information about the public exhibition and key documents, and how to make a submission.
- Maintaining the ongoing project email and phone number hotline for the community to provide feedback or ask questions directly to the project team. No calls were received during the public exhibition period and just one email was received requesting further information on Stage 2.

### 3.0 Stakeholder Consultation Outcomes

The following table summarises the stakeholder consultation completed during the statutory exhibition period. No feedback was received from stakeholders other than those outlined below.

Detailed responses to formal submissions lodged with the Department of Planning, Industry and Environment can be found in the Stage 2 Response to Submissions Report.

Date	Group	Summary of consultation and feedback received
19 June 2019	Sydney Football Stadium Redevelopment Community Consultative Committee (CCC)	<ul style="list-style-type: none"> <li>• Update provided on Stage 1 works, Stage 2 public exhibition, and community complaints.</li> <li>• Presentation on parking on Centennial Parklands by Centennial Park and Moore Park Trust.</li> <li>• Responses from Infrastructure NSW to ongoing issues regarding disability access, Driver Avenue steps and other issues.</li> <li>• Feedback included: 2 lifts are insufficient, safety concerns over the stairs on Driver Avenue, and issue with scale and bulk.</li> </ul>
2 July 2019 (emailed feedback) 6 August (meeting)	Centennial Parklands CCC	<ul style="list-style-type: none"> <li>• The following feedback was provided through email correspondence:               <ul style="list-style-type: none"> <li>- Opposition to the continued use of Centennial Parklands for car parking;</li> <li>- Dissatisfaction with the large bulk leading to shadowing;</li> <li>- Views that there is an abuse of scale around parklands; and</li> <li>- Scale of naming rights on Stadium not being sympathetic to the area.</li> </ul> </li> <li>• The Centennial Park CCC (CP CCC) was unavailable to meet during the formal exhibition period. A presentation and discussion on Stage 2 was undertaken 6<sup>th</sup> August 2019 to address the above feedback and issues outlined in their Stage 2 Submission.</li> <li>• The meeting was attended by members of the CP CCC comprising of regular users of the park, members of the Centennial Park and Moore Park Trust (CPMPT), and members of project team.</li> <li>• Infrastructure NSW provided responses to the following issues: parking on Moore Park, shadowing over Kippax Lake, signage zones, visual impact, Kippax Lake water quality, handicapped access, and access to Moore Park.</li> <li>• The CP CCC provided the following feedback during the presentation:               <ul style="list-style-type: none"> <li>- Infrastructure NSW need to change behaviour around public vs private transport methods by encouraging public transport and be proactive towards finding a solution to satellite parking</li> <li>- The Centennial Park and Moore Park Trust (CPMPT) would like assistance from Infrastructure NSW to prevent people cutting across the parklands on Moore Park when arriving by Light Rail. Infrastructure NSW will continue discussion with CPMPT to find a collaborative solution.</li> </ul> </li> </ul>

Date	Group	Summary of consultation and feedback received
11 July 2019	Fox Studios	<ul style="list-style-type: none"> <li>• Fox Studios requested a meeting to gain a better understanding into issues associated with overlooking into the Fox Studios precinct from the Stadium; noise and vibration impacts during construction and operation; and to discuss potential mitigation measures.</li> <li>• Representatives from Cox Architecture, Infrastructure NSW and Ethos Urban attended the meeting to provide detailed responses to the issues.</li> <li>• Cox presented the possible views that could overlook into Fox Studios. It was agreed screening measures would be incorporated into the design and the use of translucent glass over the key sightlines of issue would be investigated by the design team.</li> <li>• Infrastructure NSW agreed to undertake testing with Fox Studios to understand whether noise can penetrate the sound studios.</li> <li>• Fox Studios indicated it would like to enter into a tri-partite agreement with Infrastructure NSW and the lead construction contractor to address any shortfalls or gaps in the consent conditions in relation to matters raised.</li> <li>• Infrastructure NSW discussed the need for ongoing dialogue and encouraged Fox Studios to write a submission to the Department of Planning, Industry and Environment outlining its specific issues.</li> </ul>
23 August 2019	Sydney Business Chamber	<ul style="list-style-type: none"> <li>• The Sydney Business Chamber requested a briefing on Stage 2 however the initial meeting was postponed to Friday 23<sup>rd</sup> August 2019 at the agreement of both Infrastructure NSW and the Chamber due to conflicting schedules.</li> </ul>

## 4.0 Conclusion

This Consultation Outcomes Report provides a detailed account of the communications and engagement activities undertaken during the formal exhibition period of the EIS for the Stage 2 State Significant Development Application (SSDA) for the redevelopment of the Sydney Football Stadium.

The consultation process sought to create awareness of the public exhibition period, provide information on how to access project documentation and instruct stakeholders on how to lodge a submission. It also provided an opportunity for local residents and interested stakeholders to ask questions and provide feedback directly to the project team. All feedback received through formal submissions and lodged with the Department of Planning, Industry and Environment has responded to by the project team in the Response to Submissions Report.

The consultation program reached a wide range of businesses, residents, stakeholders, and community members in the surrounding areas and across Sydney. This outreach included delivering 23,000 postcards to local residents and businesses, sending letters to 28 stakeholders offering a private briefing on Stage 2, meetings with Fox Studios Australia, Sydney Football Stadium Redevelopment Community Consultative Committee, Centennial Parklands Community Consultative Committee, updating the project specific website, and monitoring the public phonenumber and email address. A final stakeholder meeting will be held with the Sydney Business Chamber on the 23<sup>rd</sup> August 2019.

The program has provided an opportunity for the community and key stakeholders to have a clear understanding of the planning process and how to lodge a formal submission. They have been provided with ample opportunity to meet the project team including technical experts, offer feedback and be kept informed as the project continues.

Infrastructure NSW will continue to work with all stakeholders during the Response to Submissions period and beyond.

---

**Stakeholder Letters**

Mr Jaymes Boland-Rudder  
National Rugby League Ltd  
Driver Ave, Moore Park  
NSW 2021

PO Box R220  
Royal Exchange NSW 1225  
P+612 8016 0100  
E.mail@insw.com  
www.insw.com

ABN 85 031302 516

19 June 2019

*Jaymes*  
Dear Mr Boland-Rudder,

**RE: Sydney Football Stadium Redevelopment - stage two Environmental Impact Statement on exhibition**

The stage two State Significant Development Application (SSDA) for the Sydney Football Stadium Redevelopment has been lodged with the Department of Planning, Industry and Environment (DPIE). As part of the application, Infrastructure NSW has prepared an Environmental Impact Statement (EIS).

The stage two EIS for the Sydney Football Stadium Redevelopment, which includes the detailed design, construction and operation of the new facility, is on public exhibition from 19 June 2019 to 17 July 2019.

The EIS and supporting technical documentation can be viewed on the DPIE's major projects website ([planningportal.nsw.gov.au/major-projects](http://planningportal.nsw.gov.au/major-projects)). Instructions on how to make a formal submission is also available on the website.

In April 2019, we provided stakeholders with a briefing as part of our pre-lodgement consultation for the stage two application. Thank you to those who got in contact and provided feedback. All feedback gathered during pre-lodgement consultation is detailed in the Consultation Outcomes Report which has been appended to the stage two EIS. Stakeholder feedback is vital to the overall success of the project and your feedback helped to inform the stage two application.

If you would like to arrange a time to meet with the project team and discuss elements of the EIS and supporting documentation, please contact us on 1800 931 109 or email [sfsredevelopment@infrastructure.nsw.gov.au](mailto:sfsredevelopment@infrastructure.nsw.gov.au)

We encourage all stakeholders to have their say on the second stage of the redevelopment so their views can be considered as part of DPIE's assessment.

Yours sincerely,



Tom Gellibrand  
Head of Projects NSW

---

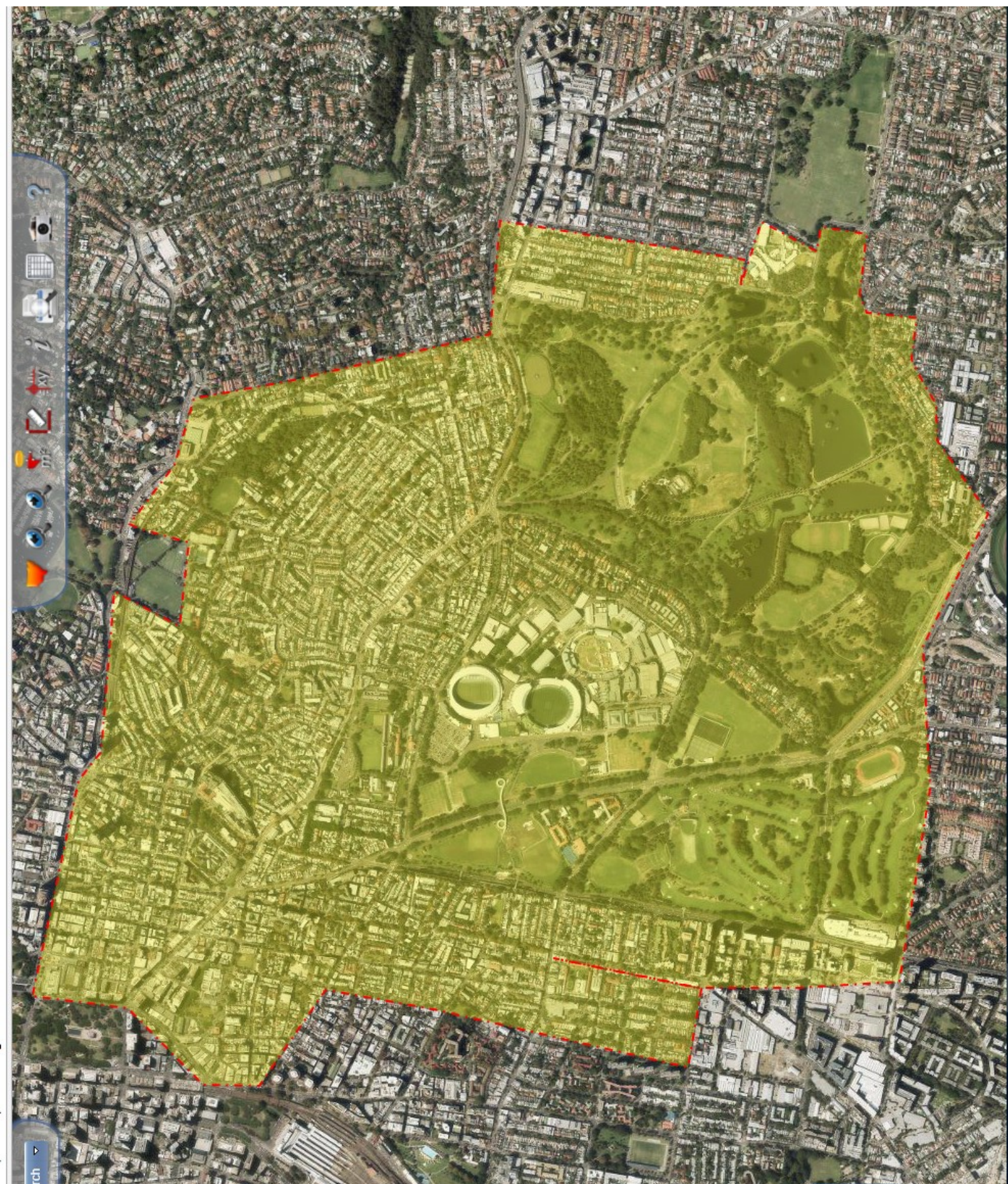
**Stakeholders Contacted**

Stakeholders contacted
City of Sydney Council
Waverley Council
Woollahra Council
Randwick Council
Victoria Barracks, Australian Army and Forces Command
Sydney Business Chamber
College of Fine Arts, UNSW
Sydney Boys High School
Sydney Girls High School
Fox Studios
Captain Cook Hotel
Kira Childcare Centre
Gumnut Gardens Early Learning Centre
Centennial Park Residents Association
Saving Moore Park
The Paddington Society
Paddington and Darlinghurst Community Working Group
Centennial Park Community Consultative Committee
City RAGS
BIKESydney
Centennial and Moore Park Trust
Australian Turf Club
Moore Park Golf Club
Olympic Sports Hotel
National Rugby League
University of Technology Sydney
Rugby Union
Entertainment Quarter

---

**Distribution Range**







---

**Flyer**

# Sydney Football Stadium Redevelopment

Project update – June 2019



## Work update

Work to demolish the Sydney Football Stadium is progressing as planned with approximately 60 percent of the stadium now complete. In late May, the eastern stand roof was lowered and demolition of the western stands concrete structure is nearing completion. During this time materials from the stadium's roof and stand structures have been processed, sorted and progressively removed from site to be recycled.

## Upcoming work

Demolition of the remaining western stand is set to continue with the demolition of the eastern stand now well underway. In order to break apart both stand's concrete structure, work is likely to result in periods of intermittent high noise. It is expected that this work will continue for a number of months.

Demolition of the ancillary buildings (the old Waratahs, Roosters and Sheridan buildings) is expected to commence after the western and eastern stands are completely demolished.

## Working hours

Construction works, including the delivery of materials to and from the site, will be carried out between the following hours:

- 7 am and 6 pm,  
Mondays to Fridays
- 8 am and 1 pm, Saturdays.



## Stage two – Environmental Impact Statement going on exhibition

The stage two Development Application (DA) for the Sydney Football Stadium Redevelopment has been lodged with the Department of Planning, Industry and Environment (DPIE). As part of the DA, Infrastructure NSW has prepared an Environmental Impact Statement (EIS).

The stage two EIS for the Sydney Football Stadium Redevelopment which includes the detailed design, construction and operation of the new facility is on public exhibition from 19 June 2019 to 17 July 2019.

We encourage community members to have their say on the second stage of the redevelopment so their views can be considered as part of stage two assessment.

The EIS and supporting technical documentation can be viewed on the DPIEs major projects website ([planningportal.nsw.gov.au/major-projects](http://planningportal.nsw.gov.au/major-projects)). Instructions on how to make a formal submission are also available on the website.

Pre-lodgement consultation with the community and key stakeholders which helped to inform the EIS has been completed. Thank you to those who got in contact and provided feedback during that time. All feedback gathered is detailed in the Consultation Outcomes report which has been appended to the stage two EIS.

To speak to a member of our project team regarding the stage two EIS, or to provide additional feedback please call 1800 931 109 or email [sfsredevelopment@infrastructure.nsw.gov.au](mailto:sfsredevelopment@infrastructure.nsw.gov.au)



### Environmental monitoring

The project carries out noise, dust and vibration monitoring at specific locations around the site to record and monitor the progress of works. For detailed results of our environmental monitoring, please visit the library section of our website.

### Want to know more about the project?

If you have any questions or complaints about demolition work, please don't hesitate to contact us:



1800 717 704



[communitysfsr@lendlease.com](mailto:communitysfsr@lendlease.com)



[insw.com/sfs](http://insw.com/sfs)



---

**Project Update**

# Sydney Football Stadium Redevelopment

Project update – June 2019



## Work update

Work to demolish the Sydney Football Stadium is progressing as planned with approximately 60 percent of the stadium now complete. In late May, the eastern stand roof was lowered and demolition of the western stands concrete structure is nearing completion. During this time materials from the stadium's roof and stand structures have been processed, sorted and progressively removed from site to be recycled.

## Upcoming work

Demolition of the remaining western stand is set to continue with the demolition of the eastern stand now well underway. In order to break apart both stand's concrete structure, work is likely to result in periods of intermittent high noise. It is expected that this work will continue for a number of months.

Demolition of the ancillary buildings (the old Waratahs, Roosters and Sheridan buildings) is expected to commence after the western and eastern stands are completely demolished.

## Working hours

Construction works, including the delivery of materials to and from the site, will be carried out between the following hours:

- 7 am and 6 pm,  
Mondays to Fridays
- 8 am and 1 pm, Saturdays.



## Stage two – Environmental Impact Statement going on exhibition

The stage two Development Application (DA) for the Sydney Football Stadium Redevelopment has been lodged with the Department of Planning, Industry and Environment (DPIE). As part of the DA, Infrastructure NSW has prepared an Environmental Impact Statement (EIS).

The stage two EIS for the Sydney Football Stadium Redevelopment which includes the detailed design, construction and operation of the new facility is on public exhibition from 19 June 2019 to 17 July 2019.

We encourage community members to have their say on the second stage of the redevelopment so their views can be considered as part of stage two assessment.

The EIS and supporting technical documentation can be viewed on the DPIEs major projects website ([planningportal.nsw.gov.au/major-projects](http://planningportal.nsw.gov.au/major-projects)). Instructions on how to make a formal submission are also available on the website.

Pre-lodgement consultation with the community and key stakeholders which helped to inform the EIS has been completed. Thank you to those who got in contact and provided feedback during that time. All feedback gathered is detailed in the Consultation Outcomes report which has been appended to the stage two EIS.

To speak to a member of our project team regarding the stage two EIS, or to provide additional feedback please call 1800 931 109 or email [sfsredevelopment@infrastructure.nsw.gov.au](mailto:sfsredevelopment@infrastructure.nsw.gov.au)



### Environmental monitoring

The project carries out noise, dust and vibration monitoring at specific locations around the site to record and monitor the progress of works. For detailed results of our environmental monitoring, please visit the library section of our website.

### Want to know more about the project?

If you have any questions or complaints about demolition work, please don't hesitate to contact us:



1800 717 704



[communitysfsr@lendlease.com](mailto:communitysfsr@lendlease.com)



[insw.com/sfs](http://insw.com/sfs)