



SITE CONTEXT - NTS

* PLEASE NOTE: PLANS TO BE READ IN CONJUNCTION
WITH THE FOLLOWING DA DESIGN REPORT PREPARED
BY SCOTT CARVER -
20180199-DR-SSD001 LANDSCAPE DESIGN REPORT [2]

LANDSCAPE - SSDA

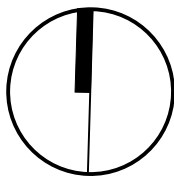
QANTAS GROUP FLIGHT TRAINING CENTRE, 297 KING STREET, MASCOT, 2020

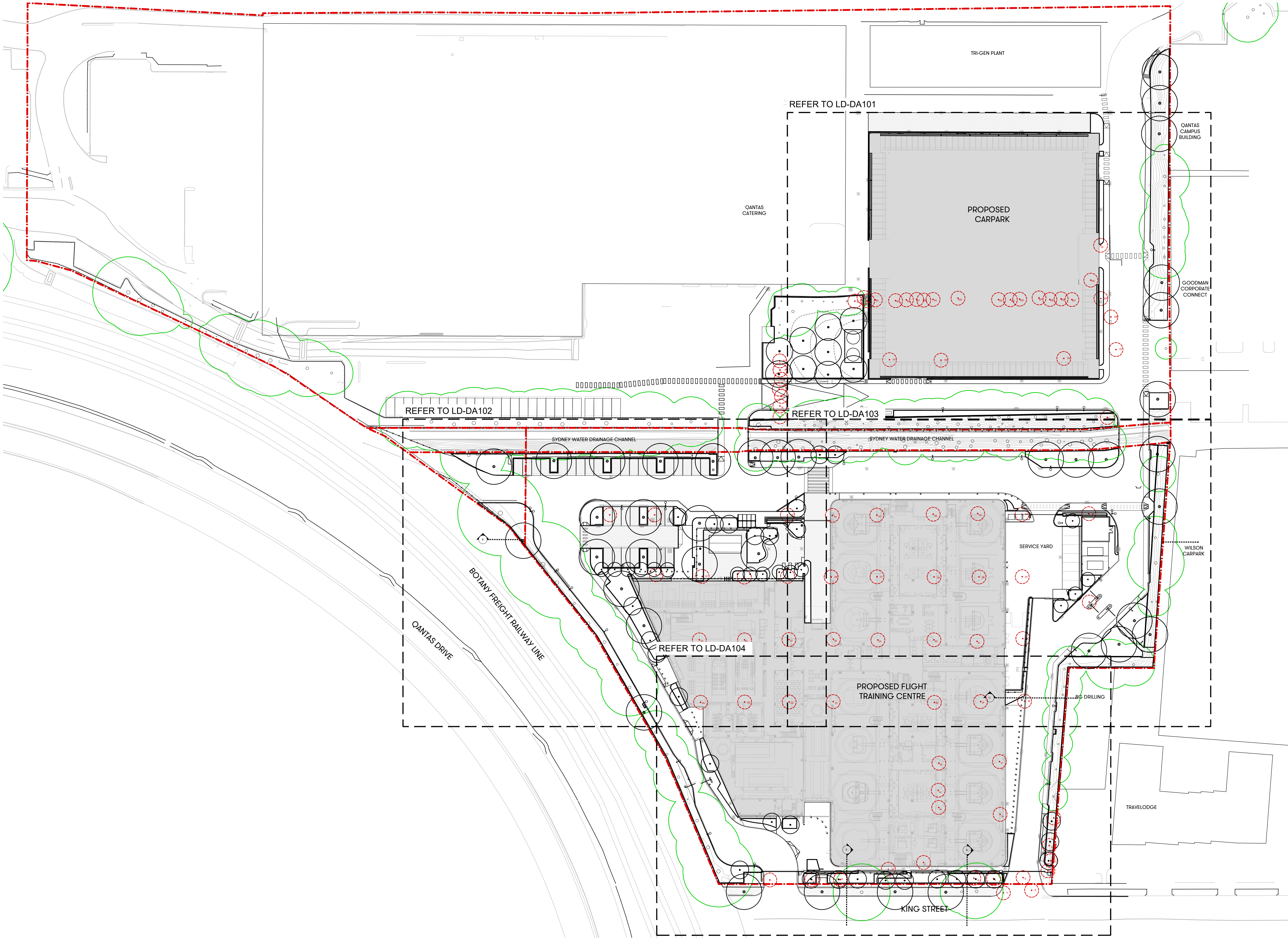
QANTAS
DATE - JULY 31, 2019

20180199: LANDSCAPE ARCHITECTURAL DRAWING LIST

LANDSCAPE DRAWING REGISTER		
SHEET	SHEET NAME	REVISION
LD-DA000	COVER SHEET	2
LD-DA100	GENERAL ARRANGEMENT LAYOUT	2
LD-DA101	GENERAL ARRANGEMENT 1	2
LD-DA102	GENERAL ARRANGEMENT 2	2
LD-DA103	GENERAL ARRANGEMENT 3	2
LD-DA104	GENERAL ARRANGEMENT 4	2

[Status] FOR SSD APPLICATION		
[Nom. Architect]		Esther Dickens RLA #1053
[File]		20180199-LD-DA100.DWG
[Print Date]		31 July 2019
History		
[Rev#]	[Description]	[Date]
1	For SSDA	12.04.19
2	For SSDA RTS	31.07.19





[Status] FOR SSD APPLICATION

[Nom. Architect] Esther Dickens
RLA #1053

[File] 20180199-LD-DA100.DWG

[Print Date] 31 July 2019

History

[Rev#]	[Description]	[Date]
1	For SSDA	12.04.19
2	For SSDA RTS	31.07.19

LEGEND:

- Project Site Boundary
- +RL 0.00 Proposed nominal design levels (Refer Civil)
- +EX 0.00 Existing level
- Existing 0.1m contour
- Proposed 0.5m contour
- Tree to be removed - refer to Arborist's Report
- Tree to be retained and protected - refer to Arborist's Report
- Proposed tree

Landscape plan to be read in conjunction with the Architectural and Engineers dwgs.

Plans to be read in conjunction with the following reports/Documentation

- Landscape Design Report
- Arboricultural Impact Assessment Report by EntsTree Consultancy
- Geotechnical engineering report
- Site Survey by Land Partners
- Noxon Giffen Architects

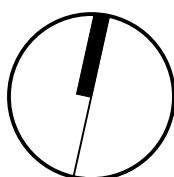
For Site levels and architectural information refer to Civil and Architect's drawings respectively.

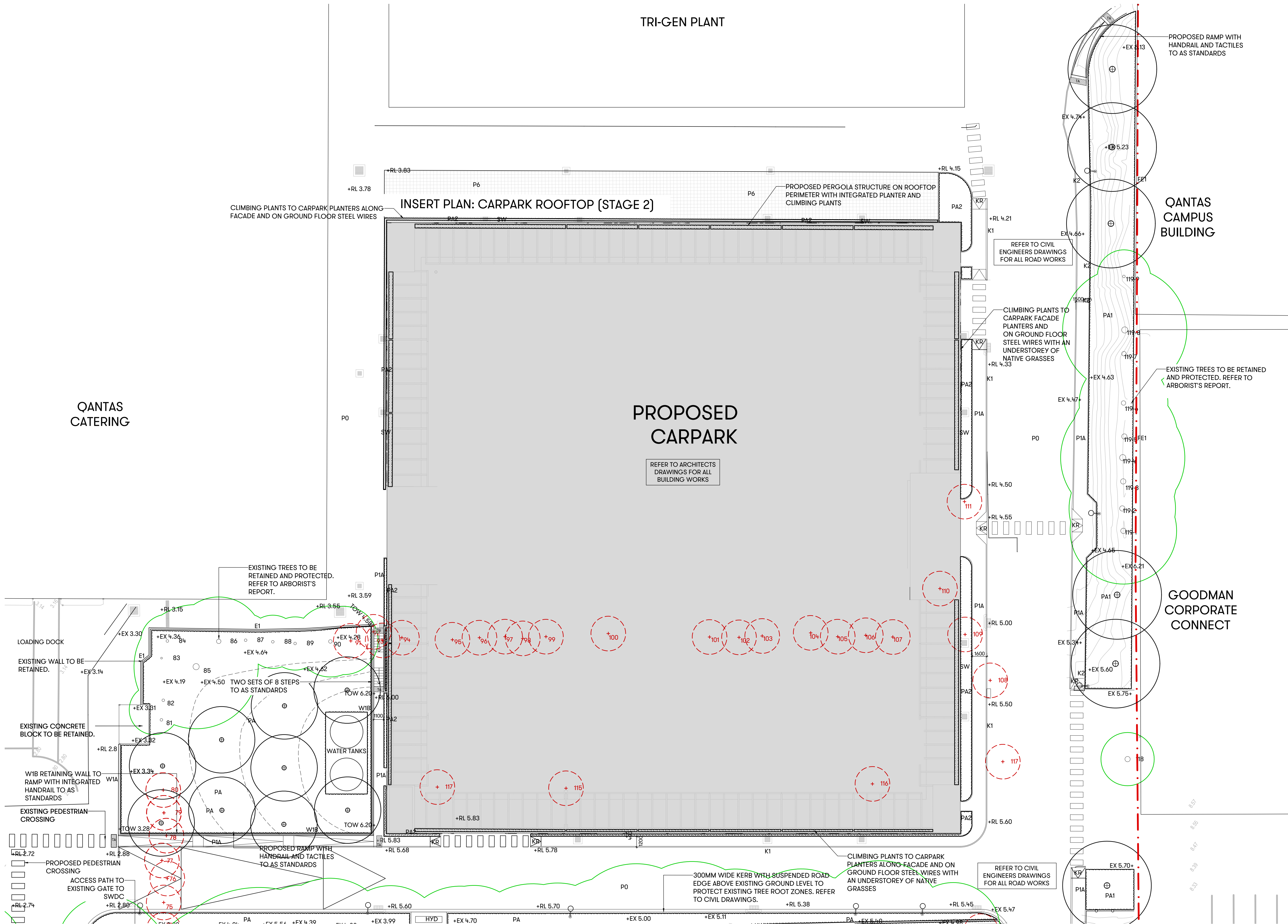
For courtyard and overflow drainage refer to Hydraulic Engineer's drawings

All trees to be retained and are subject to tree protection & management in accordance with relevant Australian standards.

External Lighting and electrical: refer to Engineer's * Architect's drawings.

Contractor to protect all landscape works during construction including but not exclusive to existing verge.





[Status] FOR SSD APPLICATION

[Nom. Architect] Esther Dickens
RLA #1053

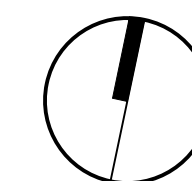
[File] 20180199-LD-DA100.DWG

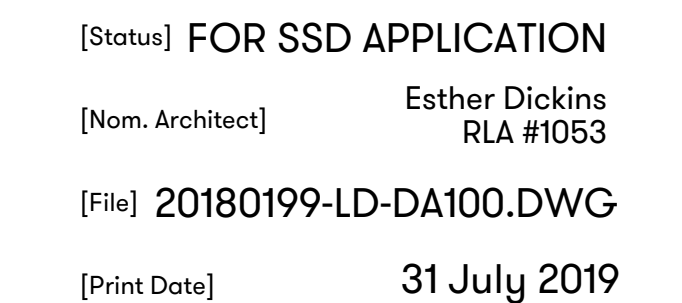
[Print Date] 31 July 2019

History

[Rev#]	[Description]	[Date]
1	For SSDA	12.04.19
2	For SSDA RTS	31.07.19

- Project Site Boundary
 - Extent of Works
 - +RL 0.00 Proposed nominal design levels (Refer Civil)
 - +EX 0.00 Existing level
 - Existing 0.1m contour
 - Proposed 0.5m contour
 - Tree to be removed - refer to Arborist's Report
 - Tree to be retained and protected - refer to Arborist's Report
 - Proposed tree
 - TU Turf
 - PA Planting area. Refer to planting schedule
 - PA1 Existing planting area to be improved with weed control & additional planting. Refer to planting schedule
 - PA2 Planting area with climbers to grow up stainless steel wire. Refer to planting schedule
 - P0 Road finish to Engineer's drawings
 - P1A Paving type 1A: Pedestrian concrete pavement*
 - P1B Paving type 1B: Vehicle concrete pavement*
 - P2 Paving type 2: Granite pavers*
 - P3 Paving type 3: Granite pavers*
 - P4 Paving type 4: Pre-cast concrete path*
 - P5 Paving type 5: No fines porous concrete*
 - P6 Paving type 6: Porous paving*
 - G1 Gate type 1: Pedestrian gate*
 - G2 Gate Type 2: Vehicle gate. Refer to Architect's drawings
 - GR Gravel*
 - DE Decomposed granite*
 - B1 Bollard Type 1: Fixed bollard*
 - B2 Bollard Type 2: Removable bollard*
 - F1 Furniture Type 1: Timber bench*
 - F2 Furniture Type 2: Granite seating block*
 - FE1 Fence Type 1: Existing fence*
 - FE2 Fence Type 2: Security fence*
 - FE3 Fence Type 3: Acoustic timber fence*
 - K1 Kerb Type 1: Road kerb. Refer to Engineer's drawings
 - K2 Kerb Type 2: Concrete kerb*
 - SE Steel edge*
 - W1A Wall Type 1A: Concrete retaining wall*
 - W1B Wall Type 1B: Concrete retaining wall with handrail*
 - W2A Wall Type 2A: 2400mm freestanding concrete wall*
 - W2B Wall Type 2B: 1980mm freestanding concrete wall*
 - LB Litter bin with ashtray*
 - BR Bike rack*
 - GBR Green roof bus shelter*
 - SW Stainless steel wire ropes*
 - TA Tactiles*
 - KR Concrete kerb ramp to Engineer's details
 - Lighting column. Refer to Architect's drawings
- * Refer to LD-CD001 Design Report Schedule
Refer to LD-CD100 for General Notes

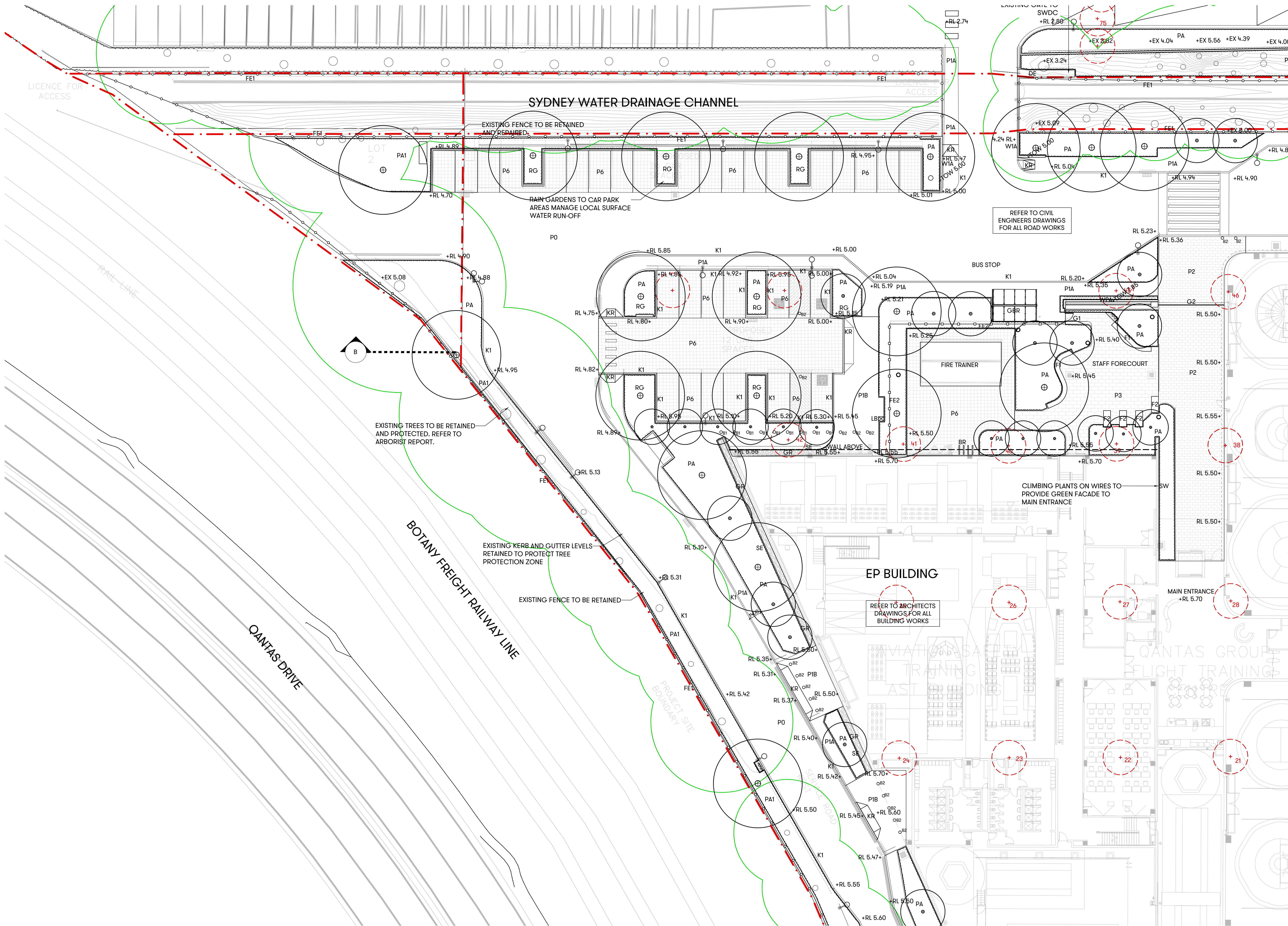




[Rev#]	[Description]	[Date]
1	For SSDA	12.04.19
2	For SSDA RTS	31.07.19

LEGEND:	
	Project Site Boundary
	Extent of Works
+RL 0.00	Proposed nominal design levels (Refer Civil)
+EX 0.00	Existing level
	Existing 0.1m contour
	Proposed 0.5m contour
	Tree to be removed - refer to Arborist's Report
	Tree to be retained and protected - refer to Arborist's Report
	Proposed tree
TU	Turf
	Planting area. Refer to planting schedule
	Existing planting area to be improved with weed control & additional planting. Refer to planting schedule
	Planting area with climbers to grow up stainless steel wire. Refer to planting schedule
P0	Road finish to Engineer's drawings
P1A	Paving type 1A: Pedestrian concrete pavement*
P1B	Paving type 1B: Vehicle concrete pavement*
P2	Paving type 2: Granite pavers*
P3	Paving type 3: Granite pavers*
P4	Paving type 4: Pre-cast concrete path*
P5	Paving type 5: No fines porous concrete*
P6	Paving type 6: Porous paving*
G1	Gate type 1: Pedestrian gate*
G2	Gate Type 2: Vehicle gate. Refer to Architect's drawings
GR	Gravel*
DE	Decomposed granite*
B1	Bollard Type 1: Fixed bollard*
B2	Bollard Type 2: Removable bollard*
F1	Furniture Type 1: Timber bench*
F2	Furniture Type 2: Granite seating block*
	Fence Type 1: Existing fence*
	Fence Type 2: Security fence*
	Fence Type 3: Acoustic timber fence*
K1	Kerb Type 1: Road kerb. Refer to Engineer's drawings
K2	Kerb Type 2: Concrete kerb*
SE	Steel edge*
W1A	Wall Type 1A: Concrete retaining wall*
W1B	Wall Type 1B: Concrete retaining wall with handrail*
W2A	Wall Type 2A: 2400mm freestanding concrete wall*
W2B	Wall Type 2B: 1980mm freestanding concrete wall*
LB	Litter bin with ashtray*
BR	Bike rack*
GBR	Green roof bus shelter*
SW	Stainless steel wire ropes*
	Tactiles*
KR	Concrete kerb ramp to Engineer's details
	Lighting column. Refer to Architect's drawings

* Refer to LD-CD001 Design Report Schedule Reference D-CD100 for General Notes



[Status] FOR SSD APPLICATION

[Nom. Architect] Esther Dickens
RLA #1053

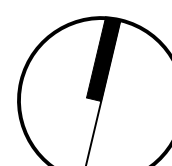
[File] 20180199-LD-DA100.DWG

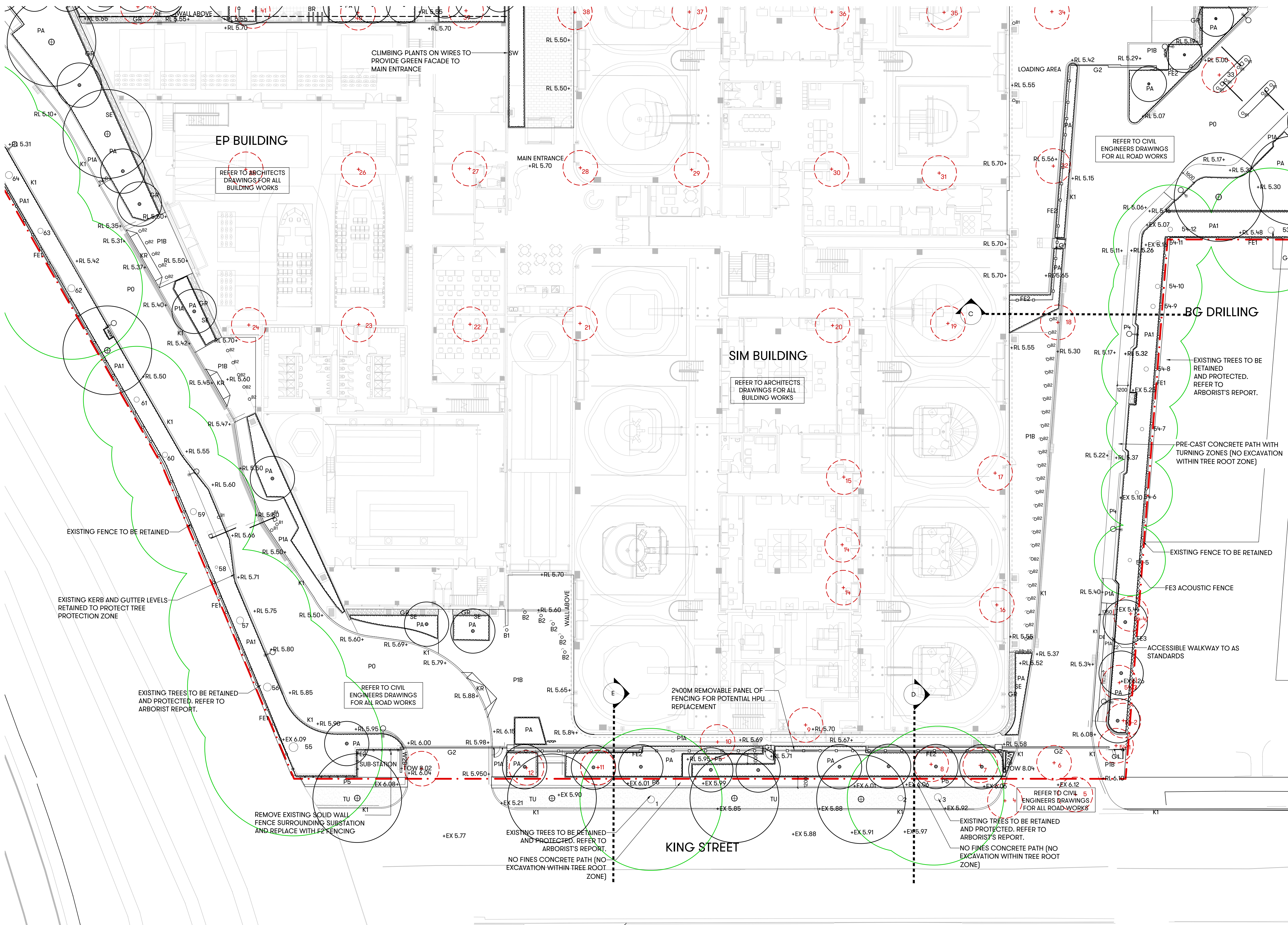
[Print Date] 31 July 2019

History

[Rev#]	[Description]	[Date]
1	For SSDA	12.04.19
2	For SSDA RTS	31.07.19

- Project Site Boundary
 - Extent of Works
 - +RL 0.00 Proposed nominal design levels (Refer Civil)
 - +EX 0.00 Existing level
 - Existing 0.1m contour
 - Proposed 0.5m contour
 - Tree to be removed - refer to Arborist's Report
 - Tree to be retained and protected - refer to Arborist's Report
 - Proposed tree
 - TU Turf
 - PA Planting area. Refer to planting schedule
 - Existing planting area to be improved with weed control & additional planting. Refer to planting schedule
 - PA2 Planting area with climbers to grow up stainless steel wire. Refer to planting schedule
 - P0 Road finish to Engineer's drawings
 - P1A Paving type 1A: Pedestrian concrete pavement*
 - P1B Paving type 1B: Vehicle concrete pavement*
 - P2 Paving type 2: Granite pavers*
 - P3 Paving type 3: Granite pavers*
 - P4 Paving type 4: Pre-cast concrete path*
 - P5 Paving type 5: No fines porous concrete*
 - P6 Paving type 6: Porous paving*
 - G1 Gate type 1: Pedestrian gate*
 - G2 Gate Type 2: Vehicle gate. Refer to Architect's drawings
 - GR Gravel*
 - DE Decomposed granite*
 - B1 Bollard Type 1: Fixed bollard*
 - B2 Bollard Type 2: Removable bollard*
 - F1 Furniture Type 1: Timber bench*
 - F2 Furniture Type 2: Granite seating block*
 - FE1 Fence Type 1: Existing fence*
 - FE2 Fence Type 2: Security fence*
 - FE3 Fence Type 3: Acoustic timber fence*
 - K1 Kerb Type 1: Road kerb. Refer to Engineer's drawings
 - K2 Kerb Type 2: Concrete kerb*
 - SE Steel edge*
 - W1A Wall Type 1A: Concrete retaining wall*
 - W1B Wall Type 1B: Concrete retaining wall with handrail*
 - W2A Wall Type 2A: 2400mm freestanding concrete wall*
 - W2B Wall Type 2B: 1980mm freestanding concrete wall*
 - LB Litter bin with ashtray*
 - BR Bike rack*
 - GBR Green roof bus shelter*
 - SW Stainless steel wire ropes*
 - TA Tactiles*
 - KR Concrete kerb ramp to Engineer's details
 - Lighting column. Refer to Architect's drawings
- * Refer to LD-CD001 Design Report Schedule
Refer to LD-CD100 for General Notes





[Status] FOR SSD APPLICATION

[Nom. Architect] Esther Dickens
RLA #1053

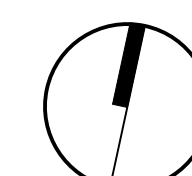
[File] 20180199-LD-DA100.DWG

[Print Date] 31 July 2019

History

[Rev#]	[Description]	[Date]
1	For SSDA	12.04.19
2	For SSDA RTS	31.07.19

- Project Site Boundary
- Extent of Works
- +RL 0.00 Proposed nominal design levels (Refer Civil)
- +EX 0.00 Existing level
- Existing 0.1m contour
- Proposed 0.5m contour
- Tree to be removed - refer to Arborist's Report
- Tree to be retained and protected - refer to Arborist's Report
- Proposed tree
- Turf
- Planting area. Refer to planting schedule
- Existing planting area to be improved with weed control & additional planting. Refer to planting schedule
- Planting area with climbers to grow up stainless steel wire. Refer to planting schedule
- P0 Road finish to Engineer's drawings
- P1A Paving type 1A: Pedestrian concrete pavement*
- P1B Paving type 1B: Vehicle concrete pavement*
- P2 Paving type 2: Granite pavers*
- P3 Paving type 3: Granite pavers*
- P4 Paving type 4: Pre-cast concrete path*
- P5 Paving type 5: No fines porous concrete*
- P6 Paving type 6: Porous paving*
- G1 Gate type 1: Pedestrian gate*
- G2 Gate type 2: Vehicle gate. Refer to Architect's drawings
- GR Gravel*
- DE Decomposed granite*
- B1 Bollard Type 1: Fixed bollard*
- B2 Bollard Type 2: Removable bollard*
- F1 Furniture Type 1: Timber bench*
- F2 Furniture Type 2: Granite seating block*
- FE1 Fence Type 1: Existing fence*
- FE2 Fence Type 2: Security fence*
- FE3 Fence Type 3: Acoustic timber fence*
- K1 Kerb Type 1: Road kerb. Refer to Engineer's drawings
- K2 Kerb Type 2: Concrete kerb*
- SE Steel edge*
- W1A Wall Type 1A: Concrete retaining wall*
- W1B Wall Type 1B: Concrete retaining wall with handrail*
- W2A Wall Type 2A: 2400mm freestanding concrete wall*
- W2B Wall Type 2B: 1980mm freestanding concrete wall*
- LB Litter bin with ashtray*
- BR Bike rack*
- GBR Green roof bus shelter*
- SW Stainless steel wire ropes*
- Tactiles*
- KR Concrete kerb ramp to Engineer's details
- Lighting column. Refer to Architect's details



SCHEDULE OF UPDATES - LANDSCAPE ARCHITECTURE

LANDSCAPE ARCHITECTURAL DRAWINGS	MAIN UPDATES
LD-DA000[2] COVER SHEET	+ Drawing Revisions
LD-DA100[2] GENERAL ARRANGEMENT LAYOUT	+ As below
LD-DA101[2] GENERAL ARRANGEMENT 1	<ul style="list-style-type: none"> + Additional climbing plants to ground floor of carpark facades north & west + Additional facade planters to north, east & west elevations (shown by note on drawings, refer to Architect's drawings) + Tree 73 to be removed, Tree 108 to be removed (added to drawing) + Additional proposed trees where possible + Porous paving to northern carpark + Design development & detail to materials and furniture
LD-DA102[2] GENERAL ARRANGEMENT 2	<ul style="list-style-type: none"> + Above as applies + Additional proposed trees & planting area where possible + Design development & detail to materials and furniture
LD-DA103[2] GENERAL ARRANGEMENT 3	<ul style="list-style-type: none"> + Additional proposed trees to northern car parking area + Porous paving to Fire Trainer and car parking areas + Rain gardens to planting areas adjacent to car park spaces + Additional planting area & proposed trees where possible + Design development & detail to materials and furniture
LD-DA104[2] GENERAL ARRANGEMENT 4	<ul style="list-style-type: none"> + Additional proposed Eucalyptus haemastoma trees to Public Domain nature strip + Tree 11 & 8 to be removed as per Arborist's Report + Additional planting area & proposed trees where possible + Design development & detail to materials and furniture

PUBLIC DOMAIN & DESIGN REPORT	MAIN UPDATES
3.1 LANDSCAPE STRATEGY p 20-21	<ul style="list-style-type: none"> + Figure 8 Landscape Site Plan updates as per general arrangement drawings + Figure 9 Landscape Site Sections updates as per changes to Carpark building and design development
3.2 KEY AREAS & TREATMENTS -ENTRY FORECOURT P 22-28	<ul style="list-style-type: none"> + Figure 10 Forecourt Plan update to include design development, additional trees and porous paving. + New Figure 11 green facade to Sims main entrance + New Figures 14, 15, 16, 17 illustrations to show carpark facade planters + King Street Frontage more detail description + New Figure 22 King Street Frontage & Public Domain Plan
3.4 TREE REMOVAL, RETENTION & REPLACEMENT P 31	<ul style="list-style-type: none"> + Figure 21 Tree removal, Retention & Replacement Plan + No. of trees to be removed & replacement trees updated
3.5 CANOPY COVER P 32	<ul style="list-style-type: none"> + Figure 25 Canopy Cover Plan + Canopy cover area increase
3.6 LANDSCAPE AREA PROVISION P 33	<ul style="list-style-type: none"> + Figure 26 Landscape Areas Provision Plan update to include design development & additional soft landscape area + Soft landscape area + Vertical soft landscape area + Deep soil
3.7 PLANTING STRATEGY P 34	+ Planting schedule to include more detailed planting list and endemic plants that are available at local nurseries
3.8 MATERIALS & FURNITURE P 35	+ Figure 27 Material Palette update to include porous paving
3.8 FENCING DETAILS p 36	+ Fencing details for security fence, pedestrian gate & acoustic fence

LANDSCAPE & VISUAL IMPACT ADDENDUM	MAIN UPDATES
ADDITIONAL VIEW 12 - BASELINE & EFFECTS	Additional view from Corporate Connect Offices Level 7 to represent views and visual effects from Level 7-11.
ADDITIONAL VIEW 12 - EXISTING VIEW & MODEL VIEW	Additional view from Corporate Connect Offices Level 7
ADDITIONAL VIEW 12 - PHOTOMONTAGE VIEW	Additional photomontage from Corporate Connect Offices Level 7 (in accordance with LVIA & photomontage guideines)
LVIA PHOTOGRAPHS & VIEWS 1, 2, 5, 6, 9 & 10	Key model views & photomontage views updated to show changes to carpark facade