

## **Appendix L: Photographic Evidence**



## BRS SSD8593 – Supporting Photographic Evidence

Photo 1: Signs directing truck drivers to exit through the wheel wash only



Photo 2: Signs directing truck drivers to exit through the wheel wash only and a little garden



Photo 3: Healthy growth of landscaping area along the Eastern-South Eastern boundary



Photo 4: Healthy growth of landscaping area along the Eastern-South Eastern boundary





**Photo 5: Healthy growth of landscaping area in the middle of the site - little garden**



**Photo 6: Healthy growth of landscaping area along the Northern – North Western boundary**



**Photo 7: Self-bunded double skinned diesel storage tank**



**Photo 8: Safety first – pedestrian crossings are being upgraded**





Photo 9: Site layout displayed at strategic locations

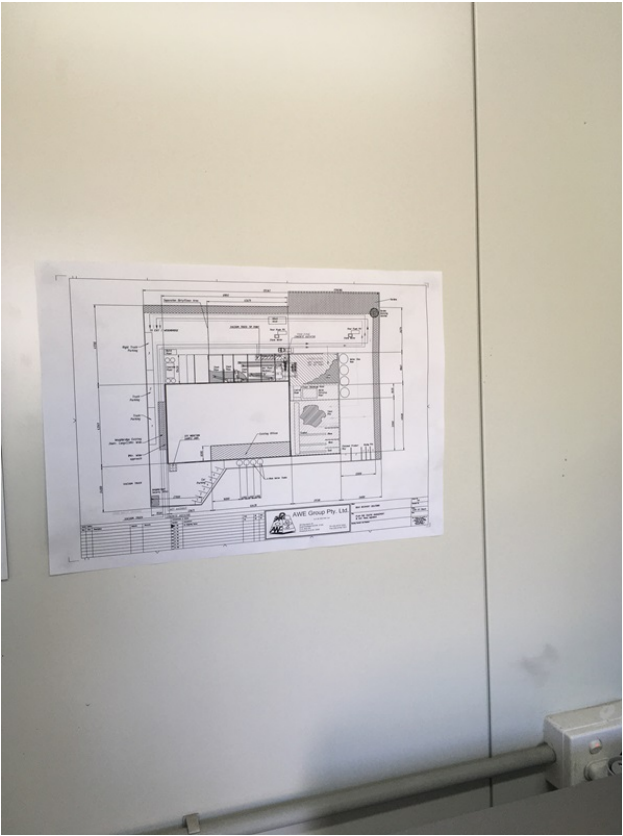


Photo 10: Emergency Contacts list is affixed to walls at strategic locations

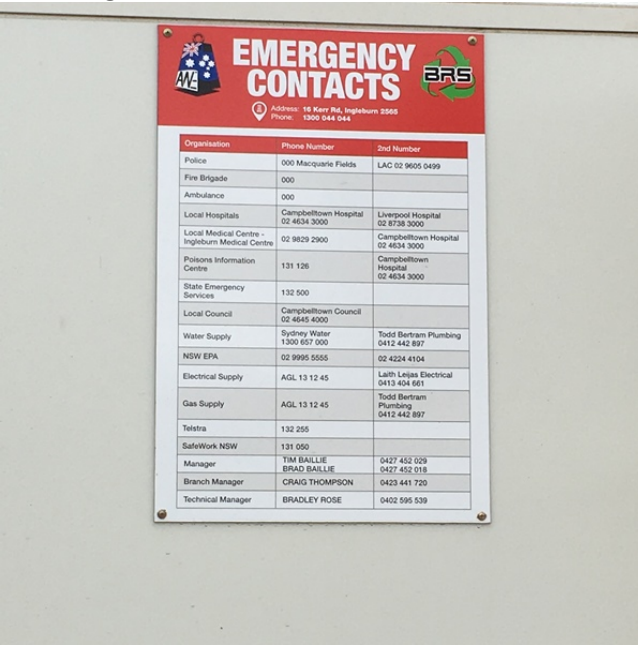


Photo 11: Shut-off valve (Isolation valve)



Photo 12: Large spill kits placed at strategic locations





Photo 13: Hose reels installed at strategic locations



Photo 14: Hose reels installed at strategic locations and evacuation diagram

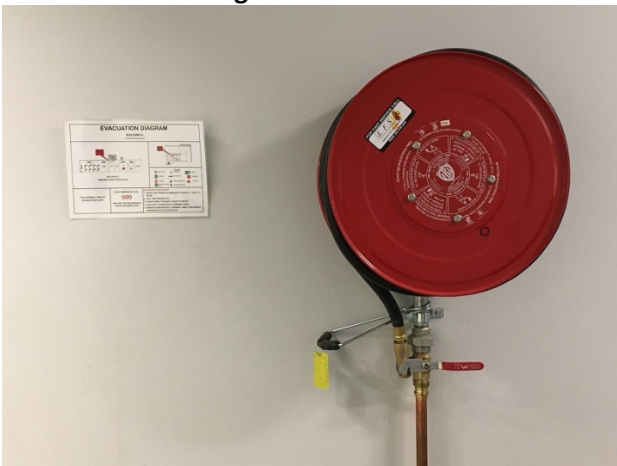


Photo 15: Fire extinguishers are installed at strategic locations



Photo 16: Fire extinguishers are installed at strategic locations



Photo 17: Fire extinguisher, hose reel and evacuation diagram



Photo 18: Fire extinguishers are installed at strategic locations



Photo 19: First Aid Kits are installed at strategic locations



Photo 20: First Aid Kits are installed at strategic locations

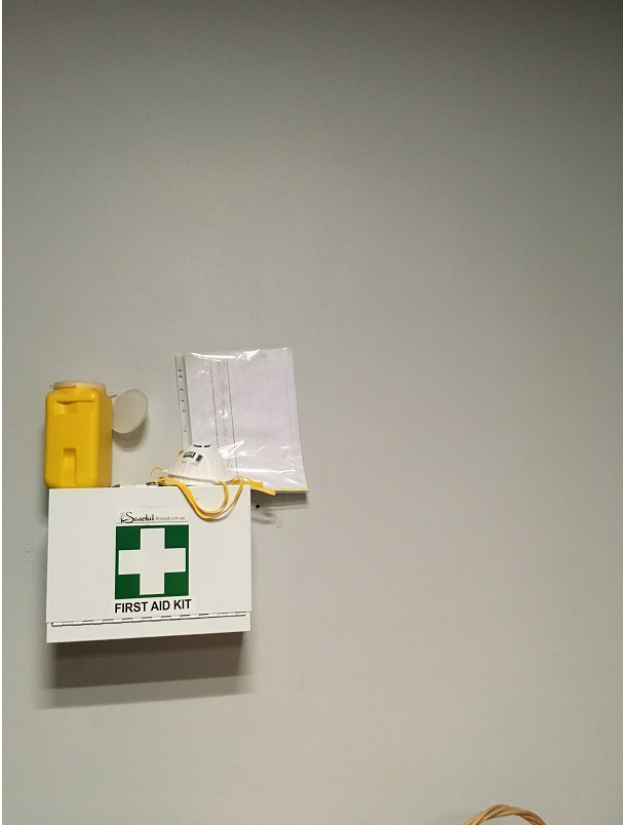




Photo 21: Defibrillator is located in a prominent location with its use instructions

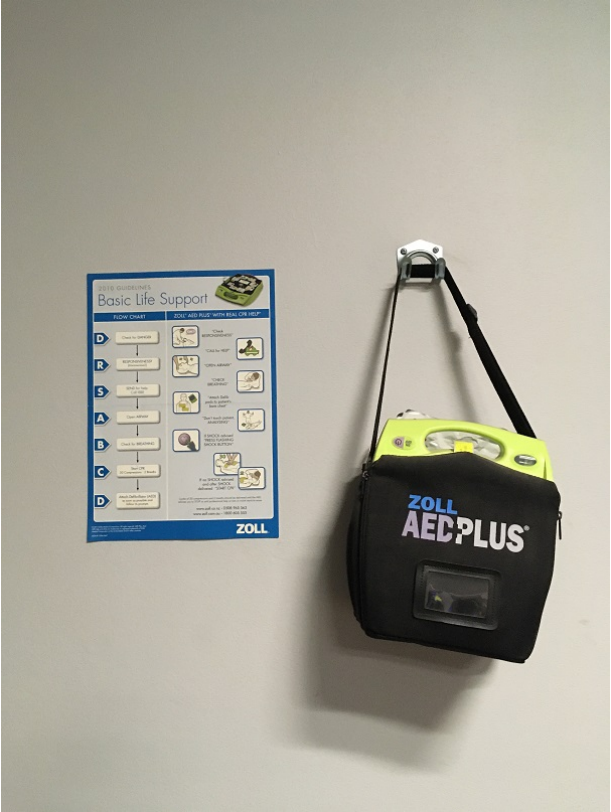


Photo 22: Evacuation Diagrams are affixed at strategic locations

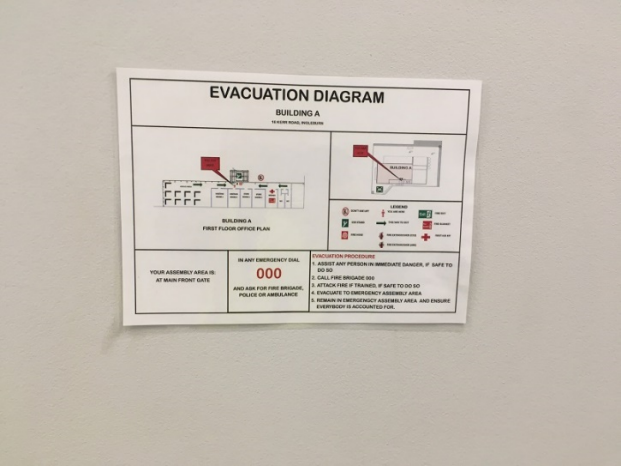


Photo 23: Shower is available for employees



Photo 24: More Pedestrian crossings are being defined

