

| LEVEL | RETAIL | CINEMA | SHFA | SERVICED APARTMENTS | HOTEL | CAR PARKS | TOTAL |
|----------|--------------------|--------------------|-------------------|------------------------|---------------------|--------------|---------------------|
| H L24 | | | | | | | |
| H L23 | | | | | 190m ² | | 190m ² |
| H L22 | | | | | 1059m ² | | 1059m ² |
| H L21 | | | | | 772m ² | | 772m ² |
| H L20 | | | | | 1597m ² | | 1597m ² |
| H L19 | | | | | 1695m ² | | 1695m ² |
| H/SA L18 | | | | | 1783m ² | | 1783m ² |
| H/SA L17 | | | | 276m ² | 1624m ² | | 1900m ² |
| H/SA L16 | | | | 669m ² | 1516m ² | | 2185m ² |
| H/SA L15 | | | | 674m ² | 1501m ² | | 2175m ² |
| H/SA L14 | | | | 1004m ² | 1545m ² | | 2549m ² |
| H/SA L13 | | | | 1134m ² | 1517m ² | | 2651m ² |
| H/SA L12 | | | | 1229m ² | 1501m ² | | 2730m ² |
| H/SA L11 | | | | 1361m ² | 1410m ² | | 2771m ² |
| H/SA L10 | | | | 1497m ² | 1388m ² | | 2885m ² |
| H/SA L09 | | | | 1514m ² | 1362m ² | | 2876m ² |
| H/SA L08 | | | | 1610m ² | 1333m ² | | 2943m ² |
| H/SA L07 | | | | 1666m ² | 1291m ² | | 2957m ² |
| H/SA L06 | | | | 950m ² | 1409m ² | | 2359m ² |
| H L05 | | | | | 1115m ² | | 1115m ² |
| P L04 | | 107m ² | | | 2200m ² | | 2307m ² |
| P L03 | | 385m ² | | | 1709m ² | | 2094m ² |
| P L02 | | 425m ² | | 69m ² | 1583m ² | | 2077m ² |
| P L01 | 582m ² | 830m ² | 303m ² | 122m ² | 909m ² | | 2746m ² |
| GF | 1204m ² | 553m ² | 62m ² | | 407m ² | | 2226m ² |
| TOTAL | 1786m ² | 2300m ² | 365m ² | 13775m ² | 32416m ² | 170 | 50642m ² |

Measured drawings:

| | |
|-------------------|-------|
| ARC-HSL-DD-1100 | Rev R |
| ARC-HSL-DD-1101 | Rev P |
| ARC-HSL-DD-1102 | Rev N |
| ARC-HSL-DD-1103 | Rev L |
| ARC-HSL-DD-1104 | Rev L |
| ARC-HSL-DD-1105 | Rev L |
| ARC-HSL-DD-1106 | Rev J |
| ARC-HSL-DD-1107 | Rev J |
| ARC-HSL-DD-1108 | Rev J |
| ARC-HSL-DD-1109 | Rev J |
| ARC-HSL-DD-1110 | Rev J |
| ARC-HSL-DD-1111 | Rev J |
| ARC-HSL-DD-1112 | Rev J |
| ARC-HSL-DD-1112.1 | Rev F |
| ARC-HSL-DD-1112.2 | Rev F |

GFA Method of Measurement:

The sum of the floor area of each floor of a building measured from the internal face of external walls, or from the internal face of walls separating the building from any other building, or from the back of the mullions of curtain walls, measured at a height of 1.4 metres above the floor. Areas measured to include perimeter walls around aggregate areas of exclusions, including structural core walls.

- Inclusions:
- (a) the area of a mezzanine, and
 - (b) habitable rooms in a basement or an attic, and
 - (c) any shop, auditorium, cinema, and the like, in a basement or attic,

- Exclusions:
- (d) any area for common vertical circulation, such as lifts and stairs, and
 - (e) any basement:
 - (i) storage, and
 - (ii) vehicular access, loading areas, garbage and services, and
 - (f) plant rooms, lift towers and other areas used exclusively for mechanical services or ducting, and
 - (g) car parking to meet any requirements of the consent authority (including access to that car parking), and
 - (h) any space used for the loading or unloading of goods (including access to it), and
 - (i) terraces and balconies with outer walls less than 1.4 metres high, and
 - (j) voids above a floor at the level of a storey or storey above.

| REFERENCE MAP | | |
|---|--|----------|
| | | |
| NOTES | | |
| 1. DO NOT SCALE DRAWINGS. WRITTEN DIMENSIONS GOVERN. | | |
| 2. ALL DIMENSIONS ARE IN MILLIMETRES UNLESS NOTED OTHERWISE. | | |
| 3. ALL DIMENSIONS SHALL BE VERIFIED ON SITE BEFORE PROCEEDING WITH THE WORK. HASSELL SHALL BE NOTIFIED IN WRITING OF ANY DISCREPANCIES. | | |
| 4. THIS DRAWING MUST BE READ IN CONJUNCTION WITH ALL RELEVANT CONTRACTS, SPECIFICATIONS AND DRAWINGS. | | |
| © COPYRIGHT OF THIS DRAWING IS VESTED IN HASSELL. LTD. 2017 HASSELL. LTD. | | |
| THIS DRAWING IS AN UNCONTROLLED COPY, UNLESS NOTED OTHERWISE. | | |
| | | |
| | | |
| | | |
| | | |
| | | |
| | | |
| | | |
| | | |
| | | |
| | | |
| S | DA MODIFICATION 8 (IMAX) | 10.04.19 |
| R | AMENDED INTERIOR FITOUT DA MODIFICATION 6 (TOWER) | 05.04.18 |
| Q | AMENDED INTERIOR FITOUT DA MODIFICATION 6 (TOWER) | 26.03.18 |
| P | DA MODIFICATION 6 (TOWER) | 23.10.17 |
| N1 | AMENDED REVISION DESCRIPTION NEW SEQUENCE DA MOD 5 (ROOM MIX) | 23.10.17 |
| N | DA MODIFICATION 4 (ROOM MIX) | 15.05.17 |
| M1 | AMENDED AREAS DA MODIFICATION 3 (PODIUM) | 19.10.17 |
| M | DA MODIFICATION 3 (PODIUM) | 27.04.17 |
| L | AMENDED DEVELOPMENT APPLICATION | 12.04.17 |
| K | AMENDED DEVELOPMENT APPLICATION | 06.04.17 |
| J | AMENDED DEVELOPMENT APPLICATION | 16.12.16 |
| H | AMENDED DEVELOPMENT APPLICATION | 14.12.16 |
| G | AMENDED DEVELOPMENT APPLICATION | 21.03.16 |
| F | AMENDED DEVELOPMENT APPLICATION | 15.12.15 |
| E | AMENDED DEVELOPMENT APPLICATION | 23.10.15 |
| D | DEVELOPMENT APPLICATION | 14.01.14 |
| C | DEVELOPMENT APPLICATION | 05.09.13 |
| B | DEVELOPMENT APPLICATION | 20.08.13 |
| A | FINAL DRAFT | 23.07.13 |
| - | ISSUED FOR INFORMATION | 19.07.13 |
| REV | DESCRIPTION | DATE |

ARCHITECT

HASSELL Limited ABN 007 711 435
LEVEL 2, PIER 8/9,
25 HICKSON ROAD
SYDNEY NSW 2000 AUSTRALIA
SYDNEY@HASSELLSTUDIO.COM
T +61 2 9101 2000 F +61 2 9101 2100

HASSELL

CLIENT

PROJECT

THE RIBBON HOTEL,
SERVICED APARTMENTS AND RETAIL

31 WHEAT ROAD, SYDNEY

DRAWING TITLE

GFA AREA SCHEDULE

STATUS

FOR APPROVAL

SCALE @ B1

DRAWN

RT

CO-ORD

MH

REVIEWED

MH

APPROVED

EL

PROJECT NUMBER

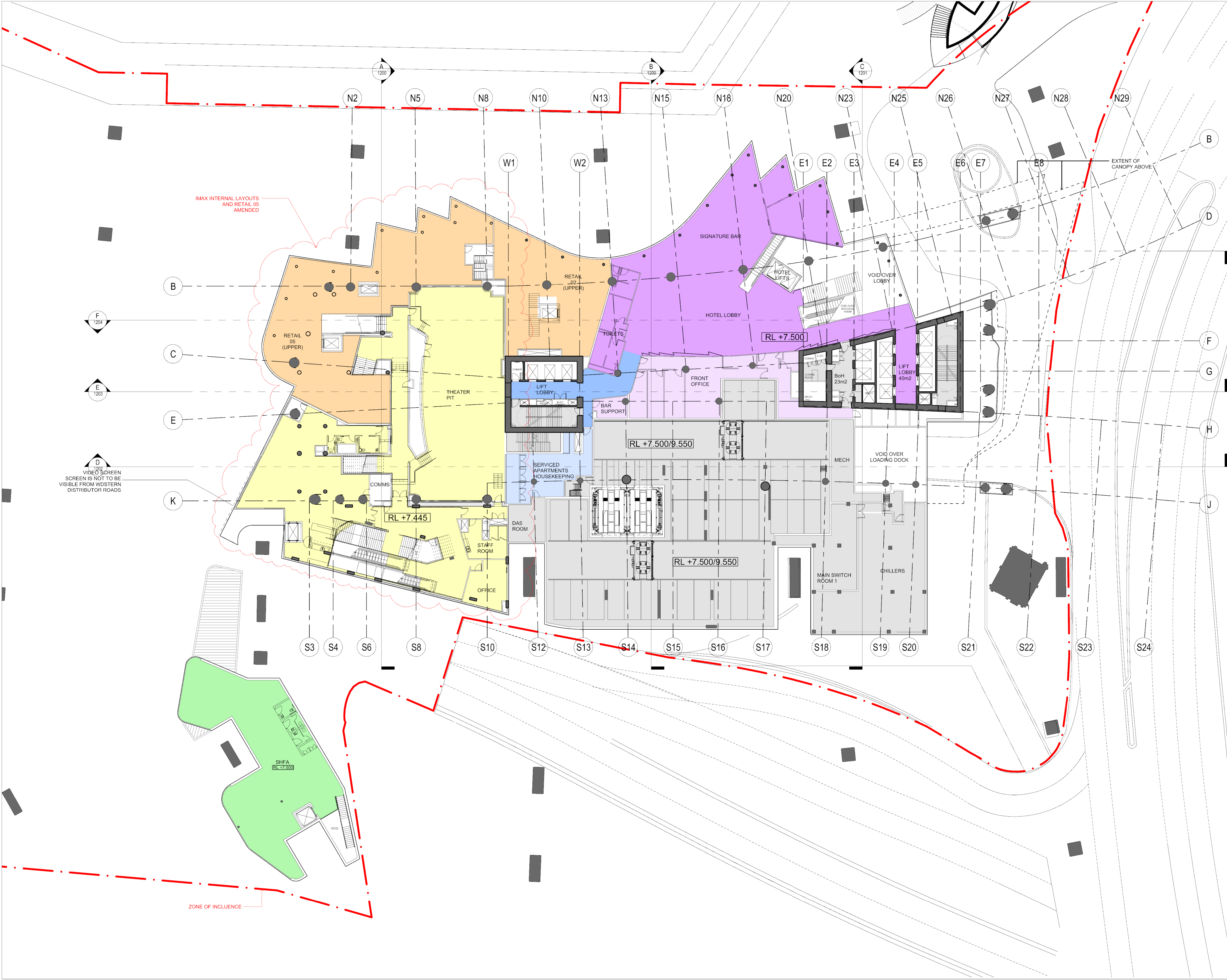
A004409

DRAWING NUMBER

ARC-HSL-DD-1052

REV

S



REFERENCE MAP

0 4 8 16m

1:200

NOTES

- DO NOT SCALE DRAWINGS. WRITTEN DIMENSIONS GOVERN.
- ALL DIMENSIONS ARE IN MILLIMETRES UNLESS NOTED OTHERWISE.
- ALL DIMENSIONS SHALL BE VERIFIED ON SITE BEFORE PROCEEDING WITH THE WORK. HASSELL SHALL BE NOTIFIED IN WRITING OF ANY DISCREPANCIES.
- THIS DRAWING MUST BE READ IN CONJUNCTION WITH ALL RELEVANT CONTRACTS, SPECIFICATIONS AND DRAWINGS.

© COPYRIGHT OF THIS DRAWING IS VESTED IN HASSELL LTD.
2017 HASSELL LTD.

THIS DRAWING IS AN UNCONTROLLED COPY, UNLESS NOTED OTHERWISE.

| REV | DESCRIPTION | DATE |
|-----|---|----------|
| Q | DA MODIFICATION 8 (IMAX) | 10.04.19 |
| P1 | INTERIOR FITOUT AMENDMENTS CLOUDED DA MOD 6 (TOWER) | 12.06.18 |
| P | AMENDED INTERIOR FITOUT DA MODIFICATION 6 (TOWER) | 05.04.18 |
| N | AMENDED INTERIOR FITOUT DA MODIFICATION 6 (TOWER) | 26.03.18 |
| M | DA MODIFICATION 5 (TOWER) | 18.10.17 |
| L1 | ADDITION OF CANOPY DA MOD 3 (PODIUM) | 20.10.17 |
| L | DA MODIFICATION 3 (PODIUM) | 12.04.17 |
| K | AMENDED DEVELOPMENT APPLICATION | 28.03.17 |
| J | AMENDED DEVELOPMENT APPLICATION | 14.12.16 |
| H | AMENDED DEVELOPMENT APPLICATION | 26.04.16 |
| G | AMENDED DEVELOPMENT APPLICATION | 21.03.16 |
| F | AMENDED DEVELOPMENT APPLICATION | 15.12.15 |
| E | AMENDED DEVELOPMENT APPLICATION | 23.10.15 |
| D | DEVELOPMENT APPLICATION | 20.12.13 |
| C | FOR REVIEW | 29.11.13 |
| B | DEVELOPMENT APPLICATION | 20.08.13 |
| A | FINAL DRAFT | 23.07.13 |
| - | ISSUED FOR INFORMATION | 19.07.13 |

ARCHITECT

HASSELL Limited ABN 007 711 435
LEVEL 2, PIER 9/9
23 HICKSON ROAD
SYDNEY NSW 2000 AUSTRALIA
SYDNEY@HASSELLSTUDIO.COM
T +61 2 9101 2000 F +61 2 9101 2100

HASSELL

pmcl

CLIENT

Grocon

PROJECT

THE RIBBON HOTEL,
SERVICED APARTMENTS AND RETAIL

31 WHEAT ROAD, SYDNEY

DRAWING TITLE

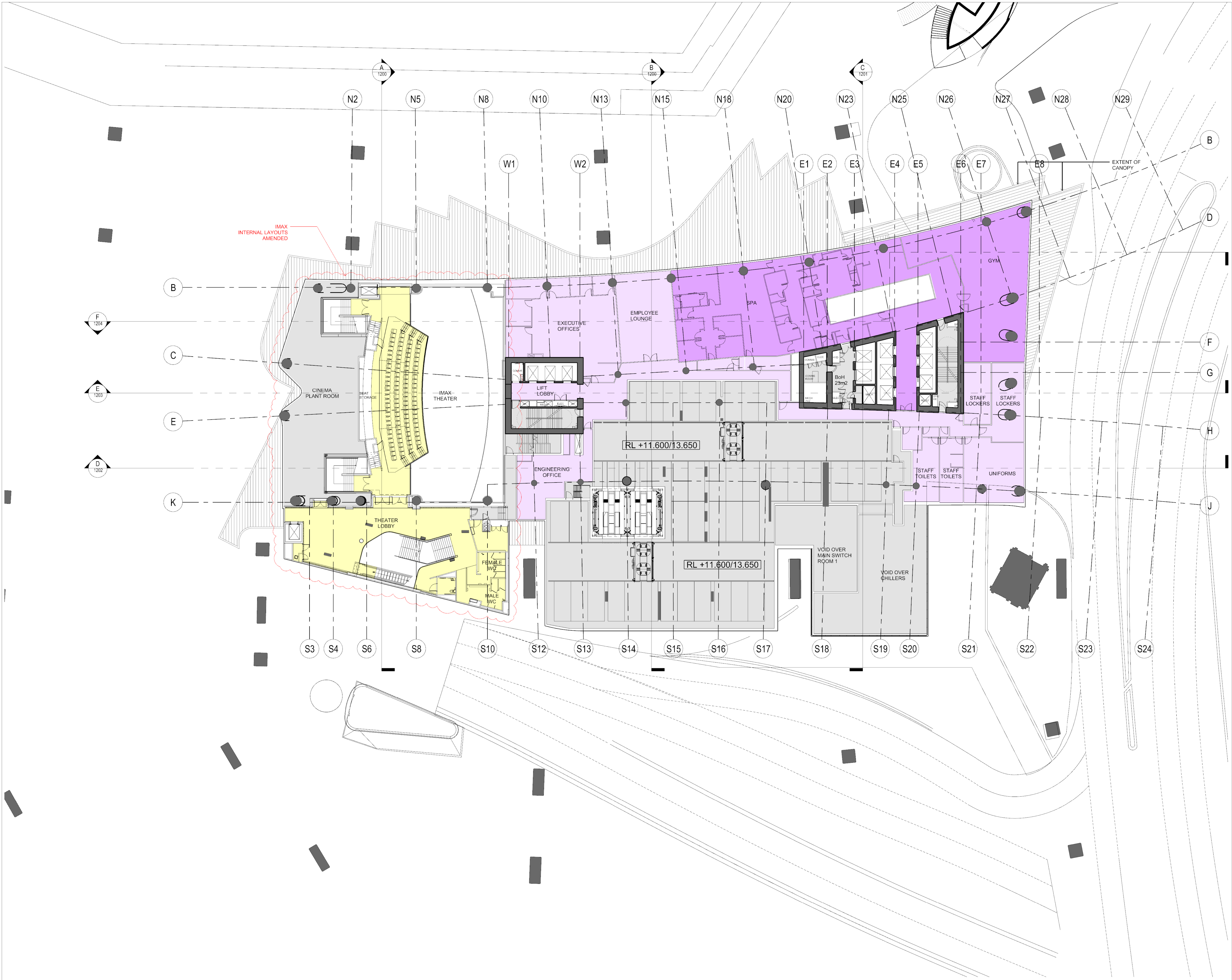
GA PLANS - PODIUM L01

STATUS

FOR APPROVAL

| SCALE @ B1 | DRAWN | CO-ORD | REVIEWED | APPROVED |
|------------|-------|--------|----------|----------|
| 1:200 | RT | MH | MH | EL |

| PROJECT NUMBER | DRAWING NUMBER | REV |
|----------------|-----------------|-----|
| A004409 | ARC-HSL-DD-1101 | Q |



REFERENCE MAP

0 4 8 16m
1:200

NOTES

- DO NOT SCALE DRAWINGS. WRITTEN DIMENSIONS GOVERN.
- ALL DIMENSIONS ARE IN MILLIMETRES UNLESS NOTED OTHERWISE.
- ALL DIMENSIONS SHALL BE VERIFIED ON SITE BEFORE PROCEEDING WITH THE WORK. HASSELL SHALL BE NOTIFIED IN WRITING OF ANY DISCREPANCIES.
- THIS DRAWING MUST BE READ IN CONJUNCTION WITH ALL RELEVANT CONTRACTS, SPECIFICATIONS AND DRAWINGS.

© COPYRIGHT OF THIS DRAWING IS VESTED IN HASSELL LTD.
2017 HASSELL LTD.

THIS DRAWING IS AN UNCONTROLLED COPY, UNLESS NOTED OTHERWISE.

| REV | DESCRIPTION | DATE |
|-----|--|----------|
| O | DA MODIFICATION 8 (IMAX) | 10.04.19 |
| N1 | INTERIOR FITOUT AMENDMENTS CLOUDED DA MOD 6 (TOWER) | 12.06.18 |
| N | AMENDED INTERIOR FITOUT DA MODIFICATION 6 (TOWER) | 05.04.18 |
| M | AMENDED INTERIOR FITOUT DA MODIFICATION 6 (TOWER) | 26.03.18 |
| L | DA MODIFICATION 6 (TOWER) | 23.10.17 |
| K | DELETE HATCH AND ADDITION OF PODIUM CANOPY DA MOD 3 (PODIUM) | 19.10.17 |
| J | DA MODIFICATION 3 (PODIUM) | 21.04.17 |
| H | AMENDED DEVELOPMENT APPLICATION | 12.04.17 |
| G | AMENDED DEVELOPMENT APPLICATION | 28.03.17 |
| F | AMENDED DEVELOPMENT APPLICATION | 14.12.16 |
| E | AMENDED DEVELOPMENT APPLICATION | 26.04.16 |
| D | AMENDED DEVELOPMENT APPLICATION | 15.12.15 |
| C | AMENDED DEVELOPMENT APPLICATION | 23.10.15 |
| B | DEVELOPMENT APPLICATION | 20.08.13 |
| A | FINAL DRAFT | 23.07.13 |
| - | ISSUED FOR INFORMATION | 19.07.13 |

ARCHITECT

HASSELL Limited ABN 007 711 435
LEVEL 2, PIER 8/9
23 HICKSON ROAD
SYDNEY NSW 2000 AUSTRALIA
SYDNEY@HASSELLSTUDIO.COM
T +61 2 9101 2000 F +61 2 9101 2100

HASSELL

pmcl

CLIENT

Grocon

PROJECT

THE RIBBON HOTEL,
SERVICED APARTMENTS AND RETAIL

31 WHEAT ROAD, SYDNEY

DRAWING TITLE

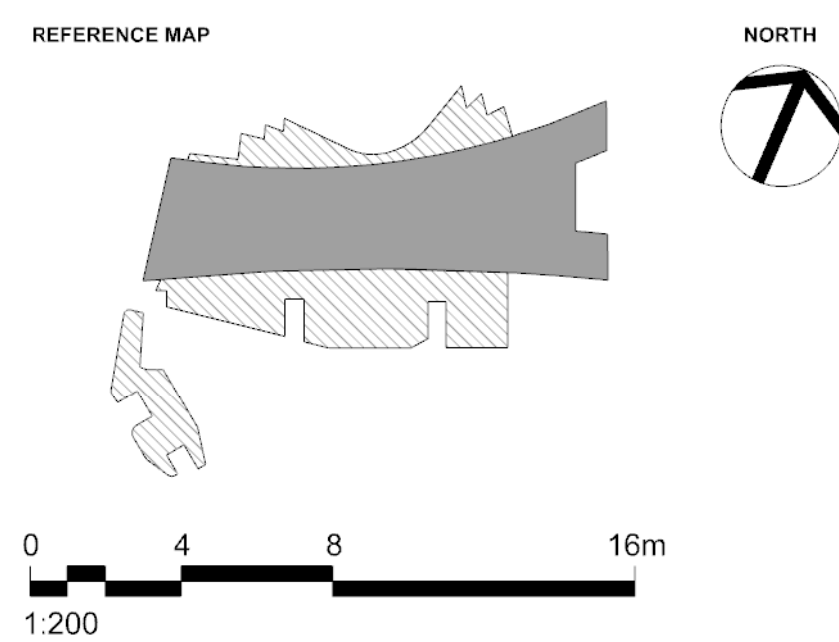
GA PLANS - PODIUM L02

STATUS

FOR APPROVAL

| SCALE @ B1 | DRAWN | CO-ORD | REVIEWED | APPROVED |
|------------|-------|--------|----------|----------|
| 1:200 | RT | MH | MH | EL |

| PROJECT NUMBER | DRAWING NUMBER | REV |
|----------------|-----------------|-----|
| A004409 | ARC-HSL-DD-1102 | O |



1. DO NOT SCALE DRAWINGS. WRITTEN DIMENSIONS GOVERN.
2. ALL DIMENSIONS ARE IN MILLIMETRES UNLESS NOTED OTHERWISE.
3. ALL DIMENSIONS SHALL BE VERIFIED ON SITE BEFORE PROCEEDING WITH THE WORK. HASSELL SHALL BE NOTIFIED IN WRITING OF ANY DISCREPANCIES.
4. THIS DRAWING MUST BE READ IN CONJUNCTION WITH ALL RELEVANT CONTRACTS, SPECIFICATIONS AND DRAWINGS.

© COPYRIGHT OF THIS DRAWING IS VESTED IN HASSELL. LTD.
2017 HASSELL. LTD.

THIS DRAWING IS AN UNCONTROLLED COPY. UNLESS NOTED OTHERWISE

[illegible]

| | | |
|-----|--|----------|
| M | DA MODIFICATION 8 (IMAX) | 10.04.19 |
| L1 | INTERIOR FITOUT AMENDMENTS CLOUDED DA MOD 6 (TOWER) | 12.06.18 |
| L | AMENDED INTERIOR FITOUT DA MODIFICATION 6 (TOWER) | 05.04.18 |
| K | AMENDED INTERIOR FITOUT DA MODIFICATION 6 (TOWER) | 26.03.18 |
| J | DA MODIFICATION 6 (TOWER) | 23.10.17 |
| H | AMENDED DEVELOPMENT APPLICATION | 12.04.17 |
| G | AMENDED DEVELOPMENT APPLICATION | 28.03.17 |
| F | AMENDED DEVELOPMENT APPLICATION | 14.12.16 |
| E | AMENDED DEVELOPMENT APPLICATION | 26.04.16 |
| D | AMENDED DEVELOPMENT APPLICATION | 15.12.15 |
| C | AMENDED DEVELOPMENT APPLICATION | 23.10.15 |
| B | DEVELOPMENT APPLICATION | 20.08.13 |
| A | FINAL DRAFT | 23.07.13 |
| - | ISSUED FOR INFORMATION | 19.07.13 |
| REV | DESCRIPTION | DATE |

ARCHITECT

HASSELL Limited ABN 007 711 435
LEVEL 2, PIER 8/9,
23 HICKSON ROAD
SYDNEY NSW 2000 AUSTRALIA
SYDNEY@HASSELLSTUDIO.COM
T +61 2 9101 2000 F +61 2 9101 2100

T +61 2 9101 2000 F +61 2 9101 2100
HASSELL



CLIENT



PROJECT

THE RIBBON HOTEL,
SERVICED APARTMENTS AND RETAIL

31 WHEAT ROAD, SYDNEY

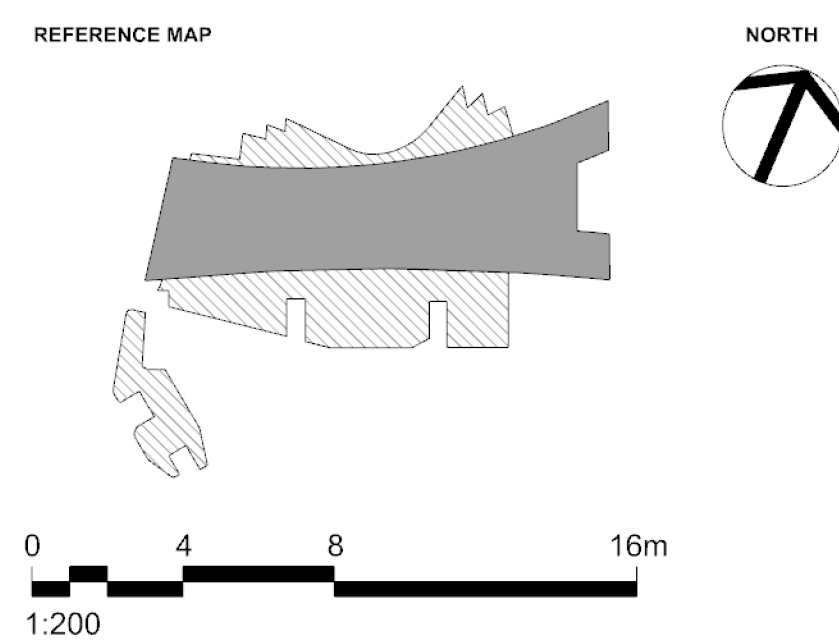
DRAWING TITLE

GA PLANS - PODIUM L03

STATUS

FOR APPROVAL

| | | | | |
|---------------------------|-----------------------------------|--------------|----------------|----------------|
| SCALE @ B1 1:200 | DRAWN RT | CO-ORD MH | REVIEWED MH | APPROVED EL |
| PROJECT NUMBER A004409 | DRAWING NUMBER ARC-HSL-DD-1103 | | | REV M |



1. DO NOT SCALE DRAWINGS. WRITTEN DIMENSIONS GOVERN.
2. ALL DIMENSIONS ARE IN MILLIMETRES UNLESS NOTED OTHERWISE.
3. ALL DIMENSIONS SHALL BE VERIFIED ON SITE BEFORE PROCEEDING WITH THE WORK. HASSELL SHALL BE NOTIFIED IN WRITING OF ANY DISCREPANCIES.
4. THIS DRAWING MUST BE READ IN CONJUNCTION WITH ALL RELEVANT CONTRACTS, SPECIFICATIONS AND DRAWINGS.

© COPYRIGHT OF THIS DRAWING IS VESTED IN HASSELL. LTD.
2017 HASSELL. LTD.

THIS DRAWING IS AN UNCONTROLLED COPY. UNLESS NOTED OTHERWISE

[illegible]

| | | |
|-----|--|----------|
| M | DA MODIFICATION 8 (IMAX) | 10.04.19 |
| L1 | INTERIOR FITOUT AMENDMENTS CLOUDED DA MOD 6 (TOWER) | 12.06.18 |
| L | AMENDED INTERIOR FITOUT DA MODIFICATION 6 (TOWER) | 05.04.18 |
| K | AMENDED INTERIOR FITOUT DA MODIFICATION 6 (TOWER) | 26.03.18 |
| J | DA MODIFICATION 6 (TOWER) | 23.10.17 |
| H1 | DELETE HATCH AMENDED REVISION DESCRIPTION DA MODIFICATION 5 (ROOM MIX) | 23.10.17 |
| H | DA MODIFICATION 4 (ROOM MIX) | 15.05.17 |
| G | AMENDED DEVELOPMENT APPLICATION | 12.04.17 |
| F | AMENDED DEVELOPMENT APPLICATION | 28.03.17 |
| E | AMENDED DEVELOPMENT APPLICATION | 14.12.16 |
| D | AMENDED DEVELOPMENT APPLICATION | 15.12.16 |
| C | AMENDED DEVELOPMENT APPLICATION | 23.10.15 |
| B | DEVELOPMENT APPLICATION | 20.08.13 |
| A | FINAL DRAFT | 23.07.13 |
| | ISSUED FOR INFORMATION | 19.07.13 |
| REV | DESCRIPTION | DATE |

ARCHITECT

HASSELL Limited ABN 007 711 435
LEVEL 2, PIER 8/9,
23 HICKSON ROAD
SYDNEY NSW 2000 AUSTRALIA
SYDNEY@HASSELLSTUDIO.COM
T +61 2 9101 2000 F +61 2 9101 2100

T +61 2 9101 2000 F +61 2 9101 2100
HASSELL



CLIENT



PROJECT

THE RIBBON HOTEL,
SERVICED APARTMENTS AND RETAIL

31 WHEAT ROAD, SYDNEY

DRAWING TITLE

GA PLANS - PODIUM L04

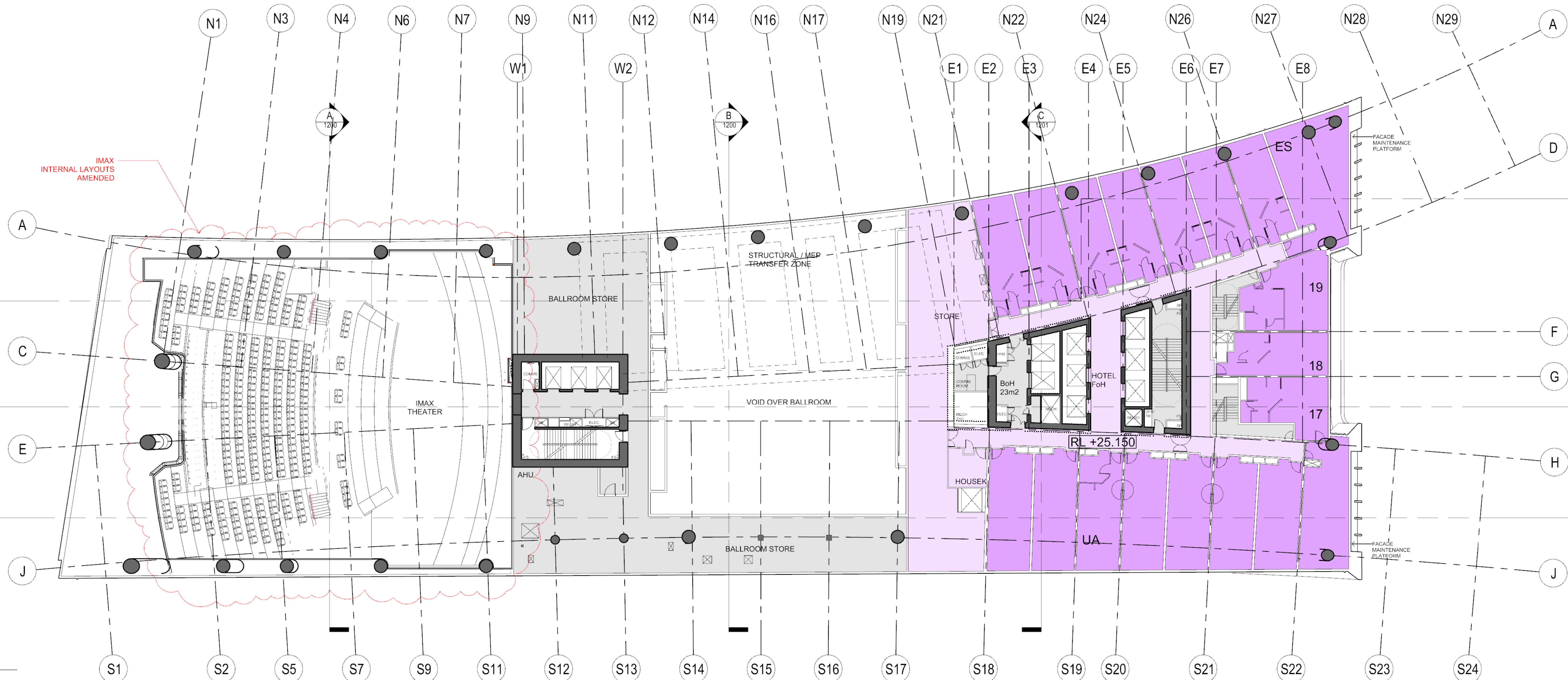
STATUS

FOR APPROVAL

| | | | | |
|---------------------------|-----------------------------------|--------------|----------------|----------------|
| SCALE @ B1 1:200 | DRAWN RT | CO-ORD MH | REVIEWED MH | APPROVED EL |
| PROJECT NUMBER A004409 | DRAWING NUMBER ARC-HSL-DD-1104 | | | REV M |

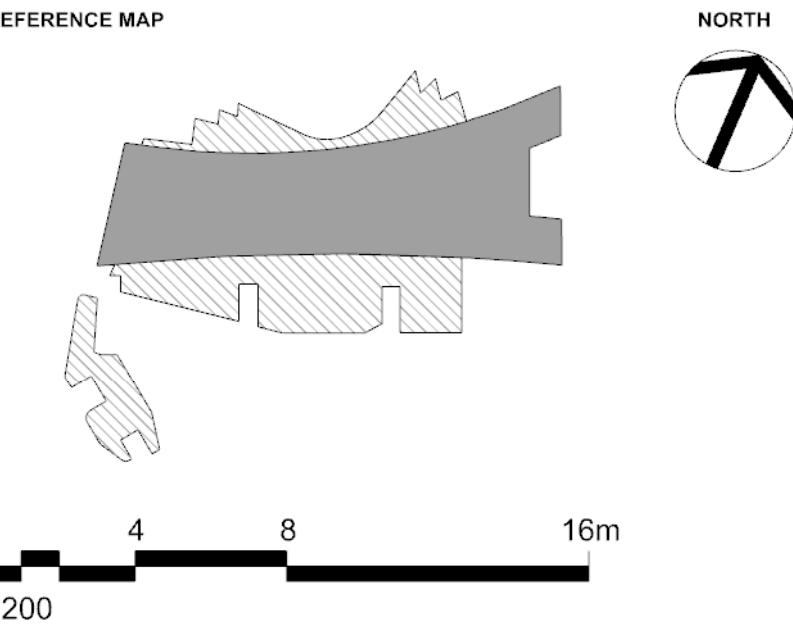
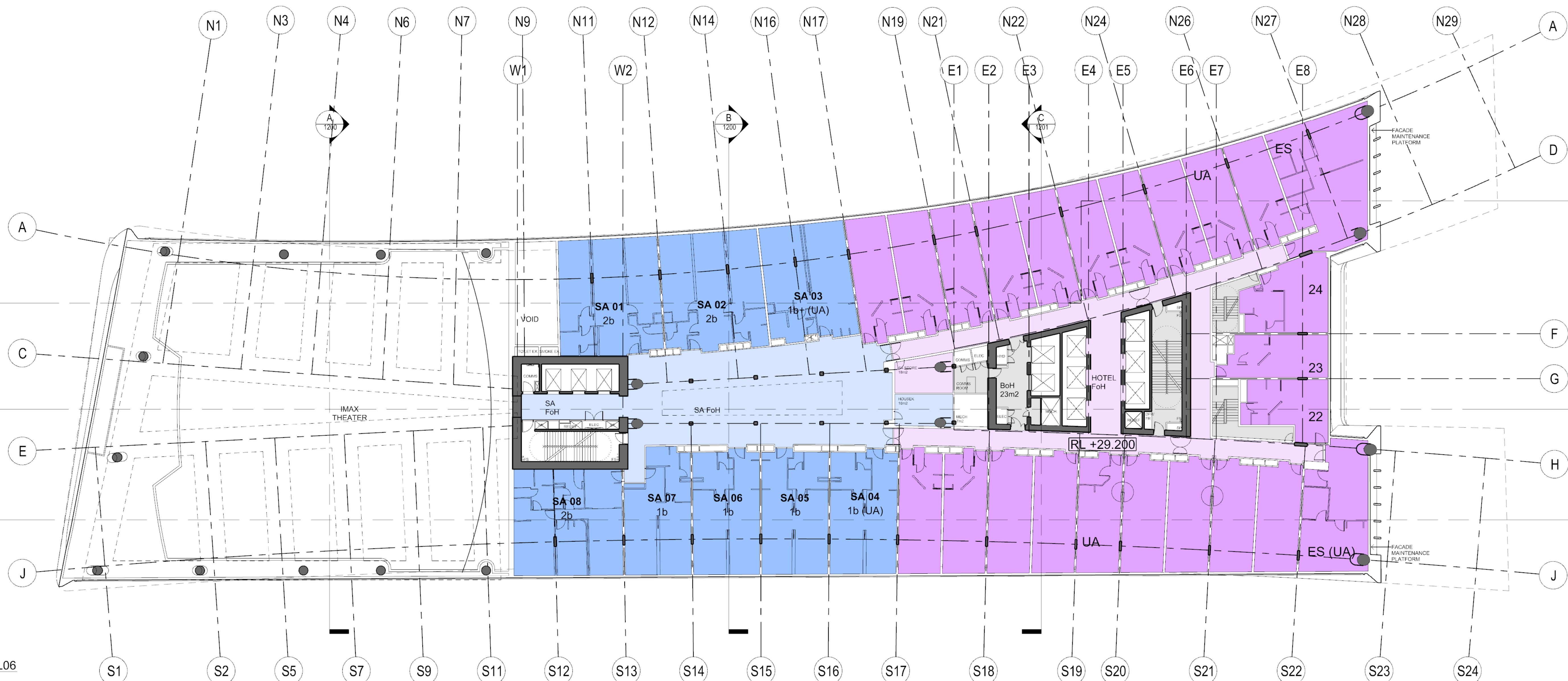
1 HOTEL APARTMENTS L05

1:200



2 HOTEL/SERVICED APARTMENTS L06

1:200



- NOTES
- DO NOT SCALE DRAWINGS. WRITTEN DIMENSIONS GOVERN.
 - ALL DIMENSIONS ARE IN MILLIMETRES UNLESS NOTED OTHERWISE.
 - ALL DIMENSIONS SHALL BE VERIFIED ON SITE BEFORE PROCEEDING WITH THE WORK. HASSELL SHALL BE NOTIFIED IN WRITING OF ANY DISCREPANCIES.
 - THIS DRAWING MUST BE READ IN CONJUNCTION WITH ALL RELEVANT CONTRACTS, SPECIFICATIONS AND DRAWINGS.

© COPYRIGHT OF THIS DRAWING IS VESTED IN HASSELL LTD.
2017 HASSELL LTD.

THIS DRAWING IS AN UNCONTROLLED COPY, UNLESS NOTED OTHERWISE.

| REV | DESCRIPTION | DATE |
|-----|--|----------|
| M | DA MODIFICATION 8 (IMAX) | 10.04.19 |
| L1 | INTERIOR FITOUT AMENDMENTS CLOUDED DA MOD 6 (TOWER) | 12.06.18 |
| L | AMENDED INTERIOR FITOUT DA MODIFICATION 6 (TOWER) | 26.03.18 |
| K | DA MODIFICATION 6 (TOWER) | 23.10.17 |
| J1 | DELETE HATCH AMENDED REVISION DESCRIPTION DA MODIFICATION 5 (ROOM MIX) | 23.10.17 |
| J | DA MODIFICATION 4 (ROOM MIX) | 15.05.17 |
| H | AMENDED DEVELOPMENT APPLICATION | 12.04.17 |
| G | AMENDED DEVELOPMENT APPLICATION | 28.03.17 |
| F | AMENDED DEVELOPMENT APPLICATION | 14.12.16 |
| E | AMENDED DEVELOPMENT APPLICATION | 21.03.16 |
| D | AMENDED DEVELOPMENT APPLICATION | 15.12.15 |
| C | AMENDED DEVELOPMENT APPLICATION | 23.10.15 |
| B | DEVELOPMENT APPLICATION | 20.08.13 |
| A | FINAL DRAFT | 23.07.13 |
| - | ISSUED FOR INFORMATION | 19.07.13 |

ARCHITECT
HASSELL Limited ABN 007 711 435
LEVEL 2, PIER 8/9
23 HICKSON ROAD
SYDNEY NSW 2000 AUSTRALIA
SYDNEY@HASSELLSTUDIO.COM
T +61 2 9101 2000 F +61 2 9101 2100

HASSELL

pmdl

CLIENT
Grocon

PROJECT
THE RIBBON HOTEL,
SERVICED APARTMENTS AND RETAIL
31 WHEAT ROAD, SYDNEY

DRAWING TITLE
GA PLANS - HOTEL AND SERVICED
APARTMENTS L05 AND L06

STATUS
FOR APPROVAL

| SCALE @ B1 | DRAWN | CO-ORD | REVIEWED | APPROVED |
|----------------|-----------------|--------|----------|----------|
| 1:200 | RT | MH | MH | EL |
| PROJECT NUMBER | DRAWING NUMBER | REV | | |
| A004409 | ARC-HSL-DD-1105 | M | | |

Original Sheet Size B1-1000 x 707mm