

20 April 2021

ptc.

Tina Tang
Jattca Property Solutions
Suite 101, Level 1
343 George Street
Sydney
NSW 2020

Dear Tina

1. SGS Weigall Sports Facility – Access Arrangement Recommendation

ptc. has been engaged to assess the proposed driveway and signage arrangement and provide design recommendations related to both access points as a combined facility.

We would recommend the Pedestrians sign (W6-1) on each side of both driveways, Stop signs (r1-1) on left-hand side of each driveway upon exiting the driveways and a 10km/h speed limit sign on both gates upon approaching from Alma Street.

We recommend removing the existing 'dead slow' signs, as they are not recognised road signs.

I have read the letter from P+I dated 8th February 2021, and while the use of Stop or Give Way signs is supported, it is not recommended to provide traffic lights in any form. This can be done when entirely within a private property, but there is no way of extending this into the public roads (including the footpath at the end of Alma Street) without becoming an official signal installation.

What would be useful is if there is a civil design of their driveway (perhaps based on my concept from last year) that we can check, mark up and send back. The same applies to our driveway when those drawings are ready.

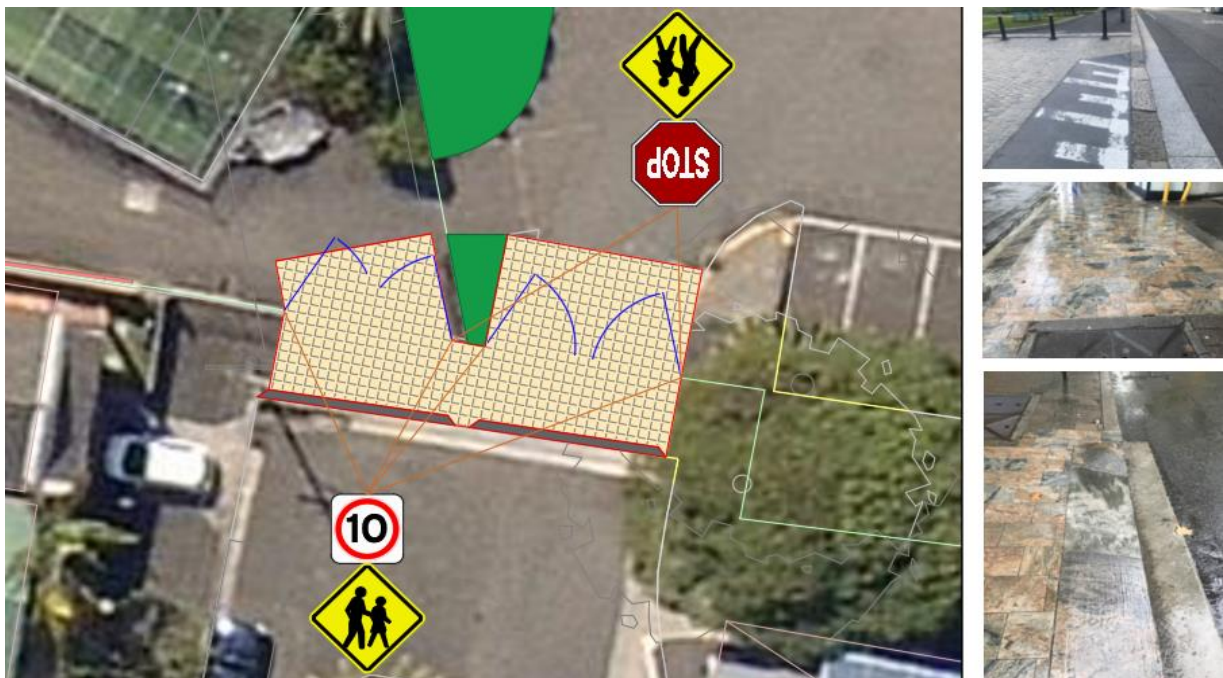


Figure 1 - Recommended Access Signage

I trust that this overview is of assistance, however please contact me to discuss, if further clarification is required.

Regards



Andrew Morse

Director

Document Control: Prepared by *KB* on *20 April 2021*. Reviewed by *AM* on *20 April 2021*.
