

9 December 2014.

Department of Planning & Environment
GPO Box 39, Sydney NSW 2001.

Attention: Ms Ingrid Ilias

C.c. By email Ingrid.ilias@planning.nsw.gov.au
Ref: 13/08339-12

Dear Ms Ilias,

**Subject: CBD and South East Light Rail (SSI 6042) Modification No.1
Response by Sydney Water.**

Thank you for the opportunity to provide a response in regard to Modification 1.

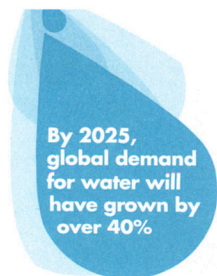
Sydney Waters response to the modifications are shown on the attached table, and are required to be address to ensure Sydney Water meets its obligations under our Operating License with NSW Government.

Should you require any further information please contact Phil Mallin Tel 88483447 ;
phil.mallin@sydneywater.com.au alternatively , Darryl Foster Tel: 88493512,
Darryl.foster@sydneywater.com.au

Yours Sincerely

A handwritten signature in black ink, appearing to read "Phil Mallin".

Phil Mallin
Asset Services
Urban Growth,
Sydney Water.



Additional impacts relating to the CBD and South East Light Rail On Sydney Water's Assets.

Modification No.1

Modification Report	Sydney Water's Comment
Clause 3.3 - Grosvenor Street Stop	The widening of the corridor at the stop on the western side will impact on the DN225 sewer pipe and various maintenance chambers. The sewer & MH may require adjustment.
Clause 3.4 -Removal of World Square stop	No comment
Clause 3.5-Moore Park Stop arrangement	No comment
Clause 3.6 -	No comment
Clause 3.7 – Realignment along Alison Rd Royal Randwick Race Course	<ul style="list-style-type: none"> The track access into stabling and maintenance facility will impact on; <ul style="list-style-type: none"> DN1650 Conc. Stormwater pipe. DN600 & DN450 CICL watermain Scour valves between the watermain and stormwater pipe. DN450 CI sewer pipe. The revised alignment will impact on : <ul style="list-style-type: none"> Vent line and vertical vent shaft east of modified stop. Crossing DN600 CICL & DN450 CICL watermain at Darley St Crossing DN300 & DN 225 sewer and MH at Darley St The regrading of Alison Rd footpath for the retaining wall may reduce the cover over the 600 CICL watermain. Construction activity along the realignment may impact on the 600 CICL watermain. A geotechnical & structural assessment will be required to determine the impact. Adjustment or protection of assets may be required.
Clause 3.8 – Realignment of light rail track at the Anzac Pde and Alison Rd.	<p>The following mains are impacted and may need to be adjusted:</p> <ul style="list-style-type: none"> Crossing DN375 CICL watermain Crossing DN500 CICL watermain Crossing DN600 CICL watermain Crossing DN200 CICL watermain DN400 sewer & maintenance chamber
Clause 3.9	No comment
Clause 3.10 – Revised Construction methodology for the tunnel under Anzac Pde.	<ul style="list-style-type: none"> Moore Park Tunnel <ul style="list-style-type: none"> The DN375 CICL watermain in Anzac Pde will impact on the construction method The watermain will require to be adjusted/protected to suit the proposed tunnel.
Clause 3.11	No comment
Clause 3.12 Height increase to Randwick Stabling facility	The increased ground fill will impact the DN450 CIP Sewer. An assessment is required to determine the loading impact on the sewer. Adjustment/ protection may be required.