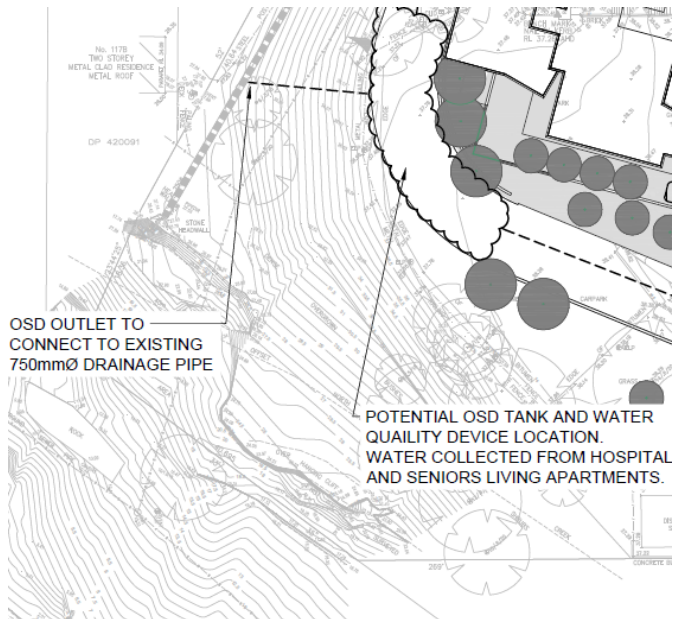
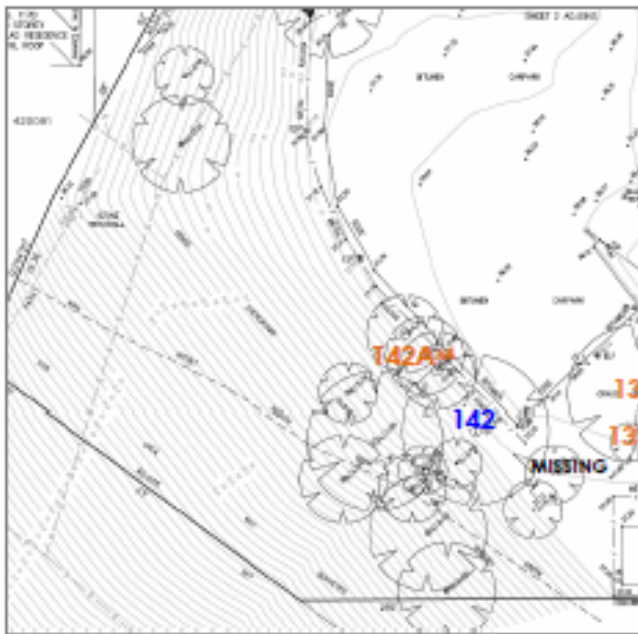


Extracts/ Comparisons of discrepancies in depiction of same site area:- South, & S-West Boundaries, site Bushland, extg Carpark/New Access road; NB omission by Arborist, Surveyor, Landscaper, of large number of tree, landforms.

Appendix C - Site Plan



Above- L: Extract p58 of Arborist Report shows ‘interpolated’ contours, “Area Not Surveyed”, absence of detail and ignores most existing trees; R : Civil Engineering Plan shows detail contours which accord with reality.



Above, L: EIS ignores many trees which exist in S-W site corner as in SixMaps Aerial view; R:- Landscape plan have ignored the existing topography, existing bushland and trees and used the “area not surveyed” version of contours and trees which is inaccurate. Assessment cannot be believably made with documents displaying different versions.

Extracts from Heritage Assessment Report. The Report makes findings based on EIS drawings which have Misleading or Misrepresented Heights of Pallister House Roof (slate), gutters and Trees

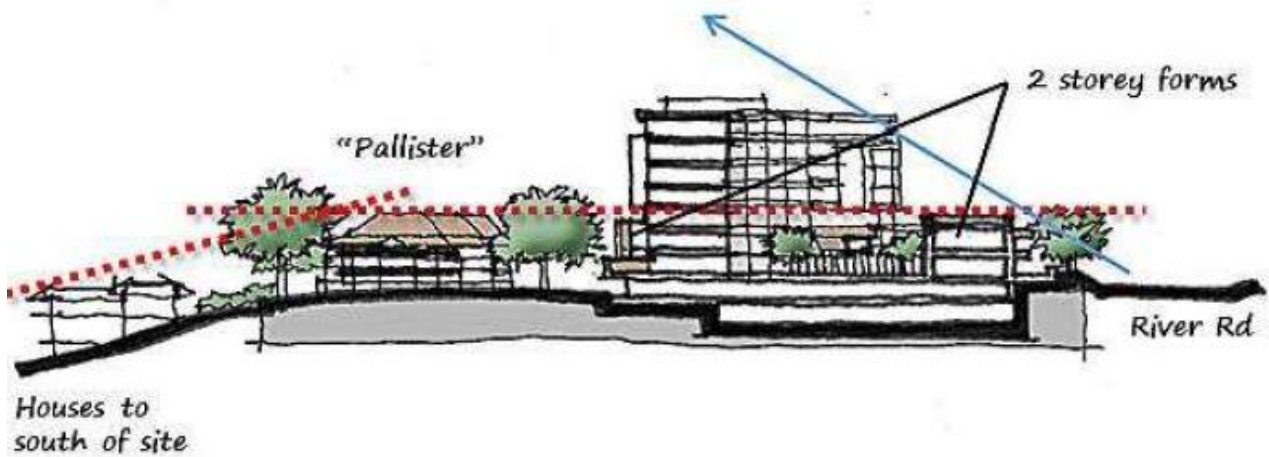


Image 6: Cross Section through the Hospital

Pallister House in sketch above appears about half height of Hospital as drawn but Pallister is really lower when compared to proposed Hospital envelope RL80.0 – refer to attached markups. Conclusions are therefore inaccurate.

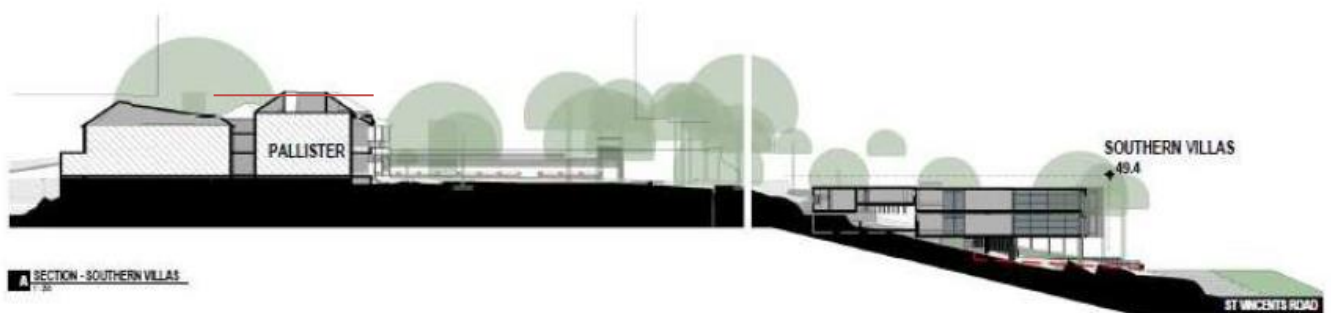


Figure 39 - Section demonstrating the relationship between the proposed Seniors Living Villas and Pallister, with the proposed villas sitting below the existing tree canopy. (Source: Bickerton Masters Architects)

Above fig. 39 draws top of Pallister House and gutters too high (red line is closer to reality for top of slate roof)



Figure 40 - Street view along St Vincent's Road showing the relationship between Pallister, the Hospital and the Villas. (Source: Bickerton Masters Architects)

Above figure from dwg S 03/T3 is used in Heritage Report but Pallister House height has been inflated (red line is indicative of real height from Survey) – see attached Mark-up of B-cross-section Hospital S04/T3 for corrections.