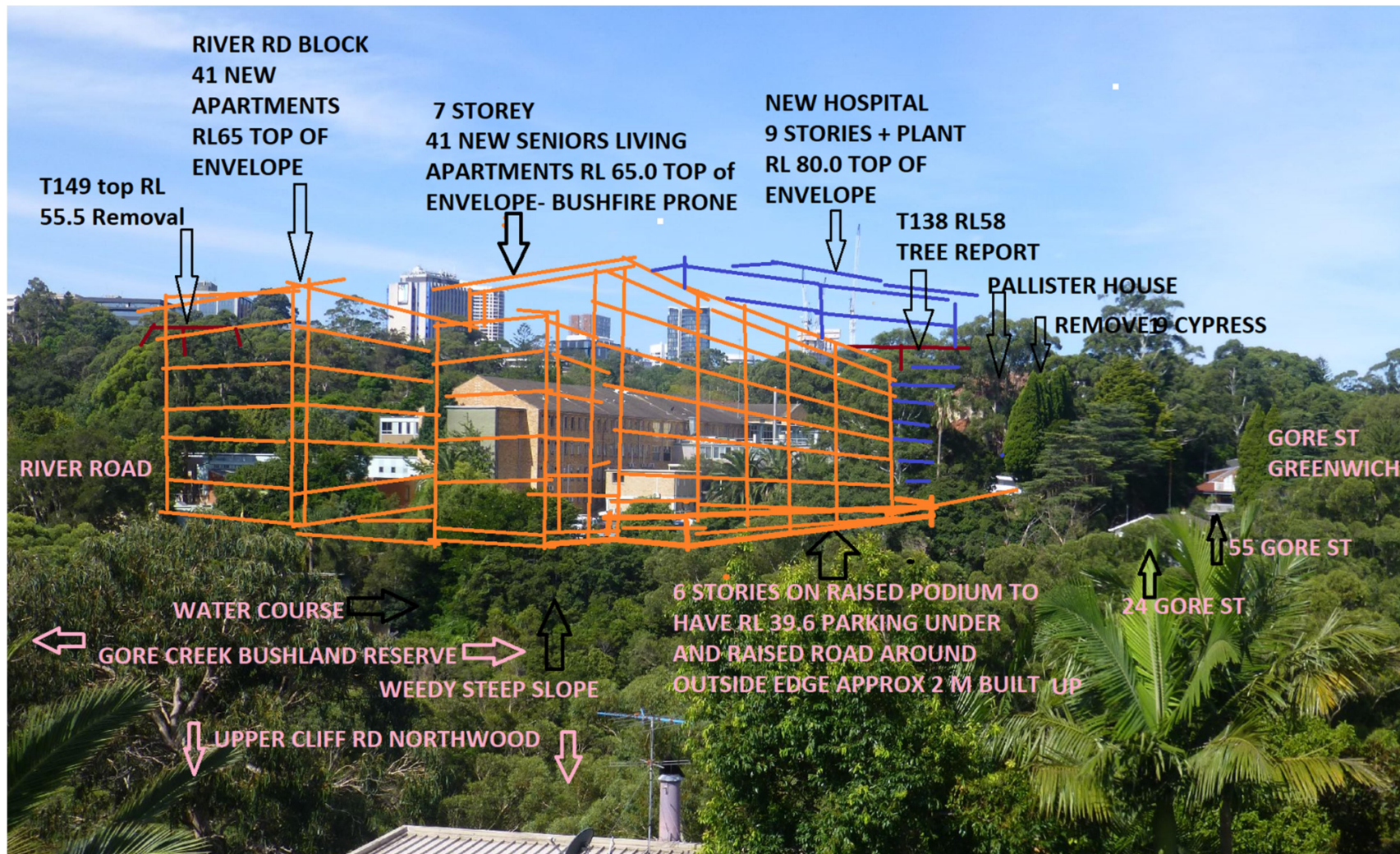




APPENDIX 1. View Locations markup on Aerial View of Locality – Yellow arrows indicate some view ‘line of sight’ locations from where the Proposal will be seen. Site = red dashed line. Specific locations will increase because buildings will be higher, bigger, closer, more in number, bulk, mass. Vegetation plays little screening role. Specific view Locations are currently more numerous than shown. Following Hammondcare re-construction, specific view locations of large, high buildings will further increase due to its density, height of finished proposal being great relative to RLs of locality, and its siting above a steep valley wall with stepped sub-vertical sandstone bedrock cliffs. Vegetation plays little role to interrupt specific views now, and will do less so following redevelopment. Due to topography falling steeply towards valley, environmental impacts affecting tree health and regeneration, and Landscape proposal which removes most trees on river-view side, for SLU views.

APPENDIX 2

PREPARED BY A MEMBER OF PUBLIC, DUE TO LACK OF MEANINGFUL VISUAL IMPACT ASSESSMENT INFORMATION FROM WEST



Artists Impression of Greenwich Hospital Redevelopment viewed from Northwood

Viewer point is approx RL40. Focal Length in 35mm Film =44mm (slightly wide than standard lens) so distant objects eg 1 Marshal appear smaller than would appear to the human eye which is closer to standard lens focal length. Scaled aerial plans and-scaled proposal were used, with 'cone of vision' sight lines

APPENDIX 3: Artists Impression of Greenwich Hospital Redevelopment viewed from Bob Campbell Oval- prepared by a member of the public

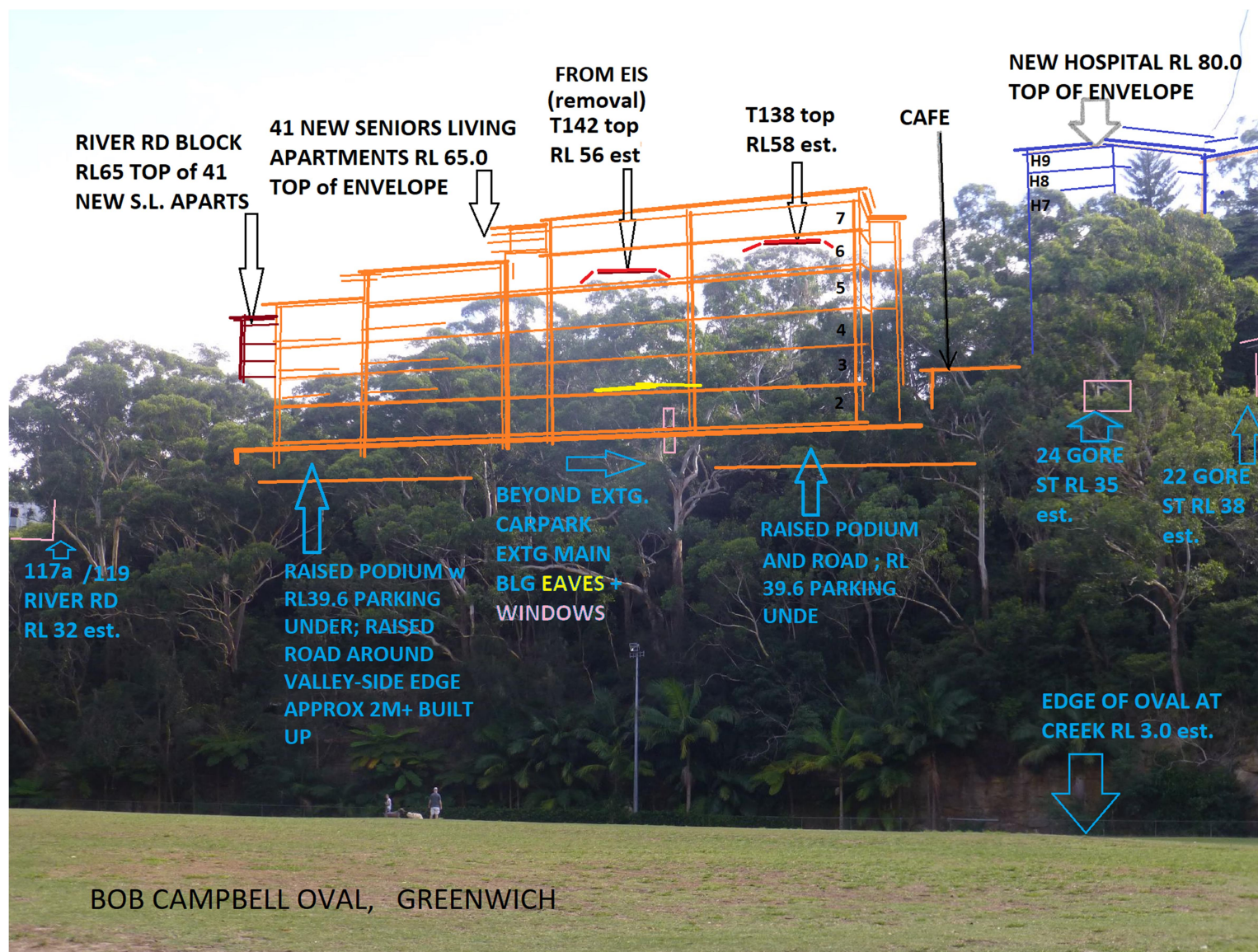


Image location 33.829331S, 151.182075W; Focal length equiv.51mm (sim to human eye);

Indicative perspective preparation used approx.57 degree cone of vision (similar to human central vision area)