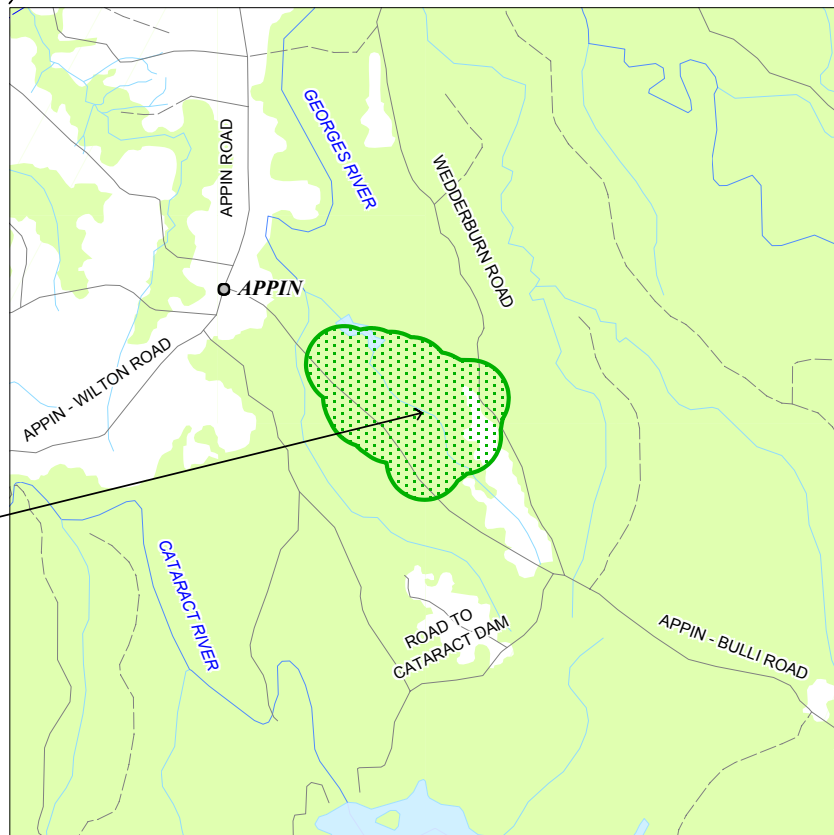
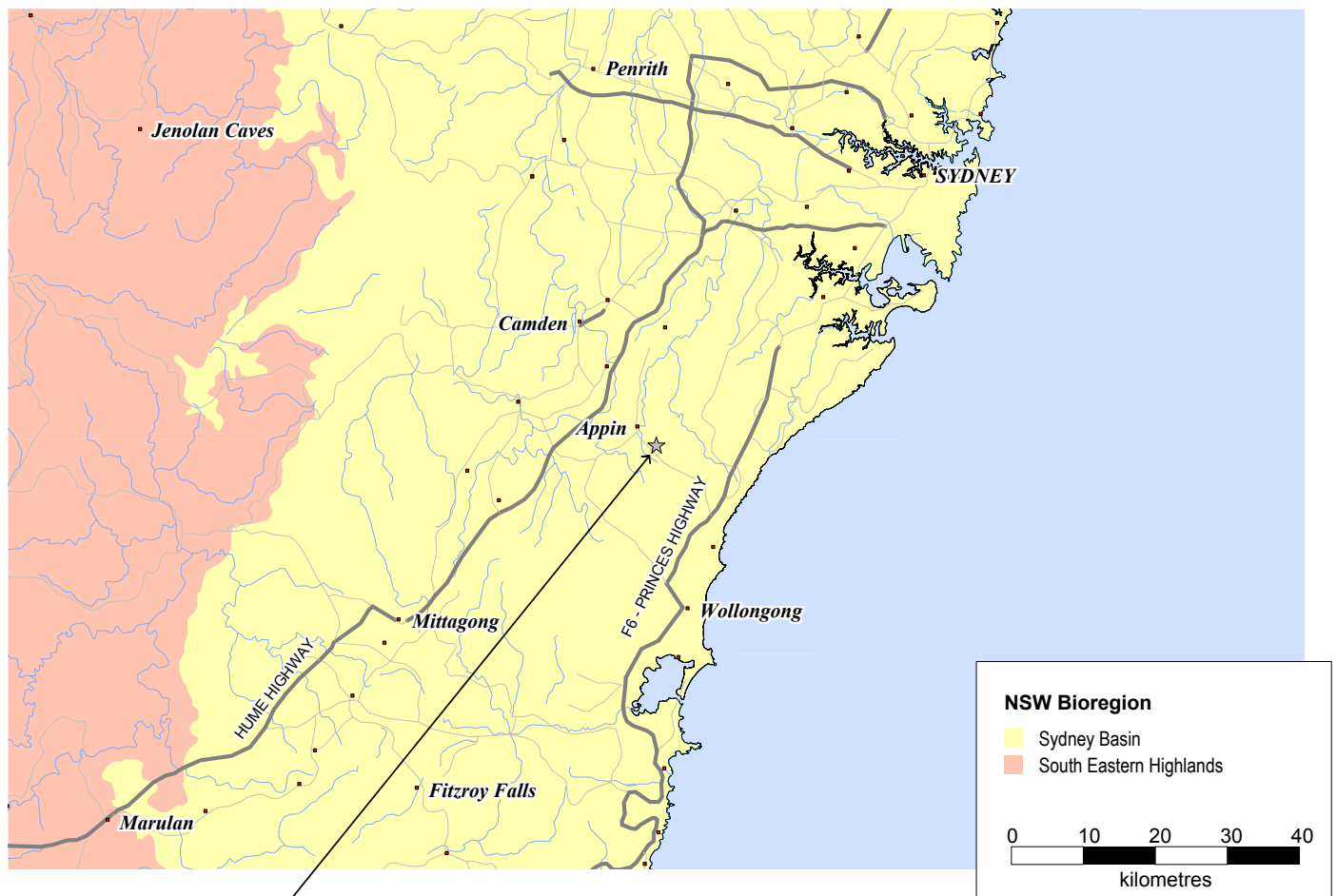
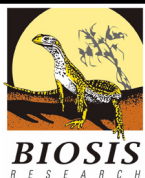


# FIGURES



*This product incorporates data which is copyright to the Commonwealth of Australia (c.2003-)*



BIOSIS RESEARCH Pty. Ltd.

15 - 17 Henrietta Street  
Chippendale  
NEW SOUTH WALES 2008

Figure 1: Location of the Study Area in a regional context.

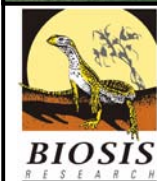
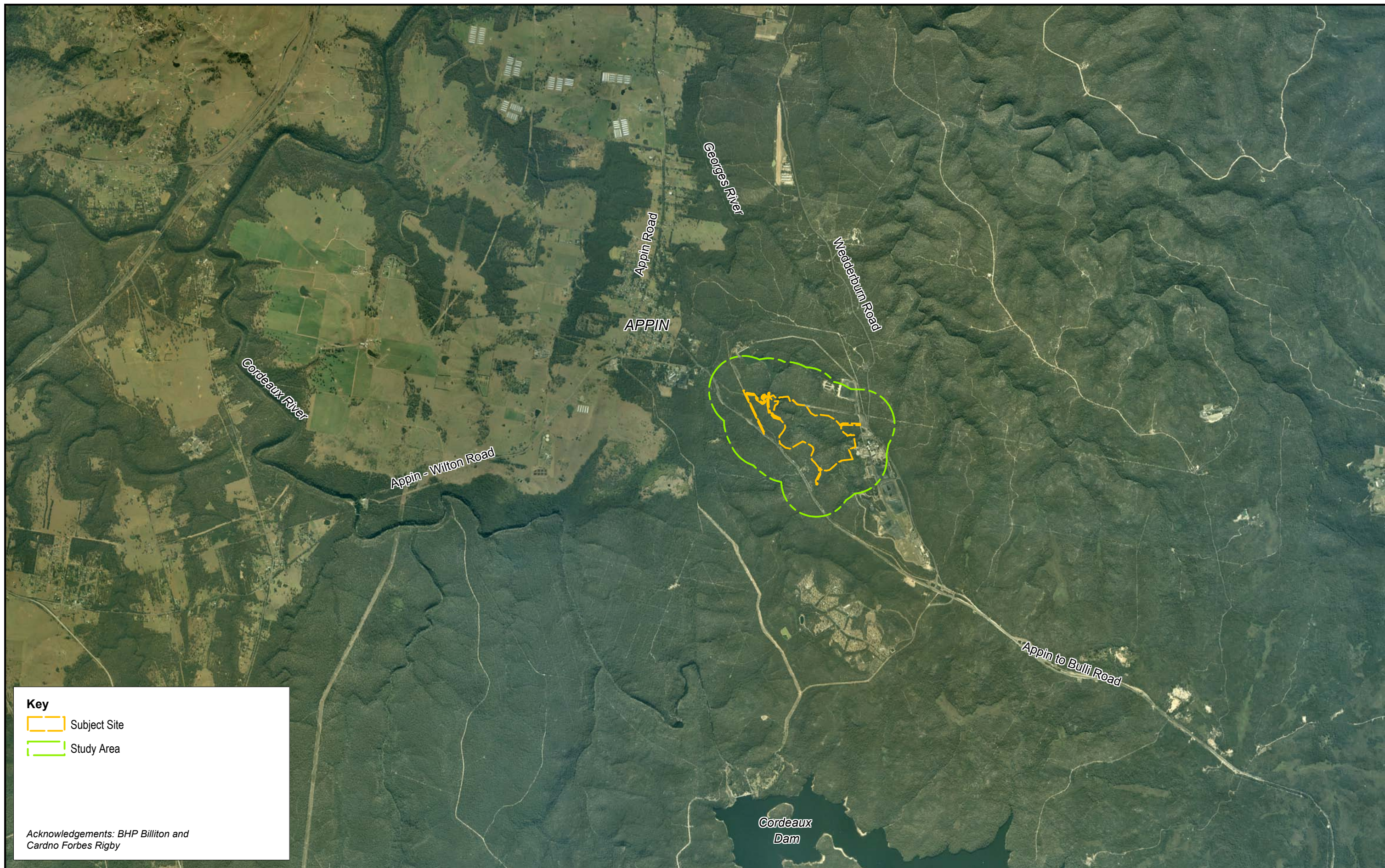
DATE: 2 June 07 Checked by: MR File: S4200

Location: ...4000\4200s\4200\SIS\SIS figures  
S4200 nats\_F1 locality.WOR

Scale:







BIOSIS RESEARCH Pty. Ltd.  
15 - 17 Henrietta Street  
Chippendale  
NEW SOUTH WALES 2008

Figure 2: Aerial photograph of the locality showing the boundaries of the Study Area and Subject Site.

DATE: 2 June 2007

Checked by: MR

File number: S4200

Location: ..4000\4200s\4200\SIS\SIS figures\S4200 nats\_F2 overview.WOR

Scale:

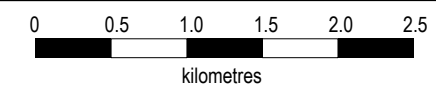


Figure 2: Aerial photograph of the locality showing the boundaries of the Study Area and Subject Site.





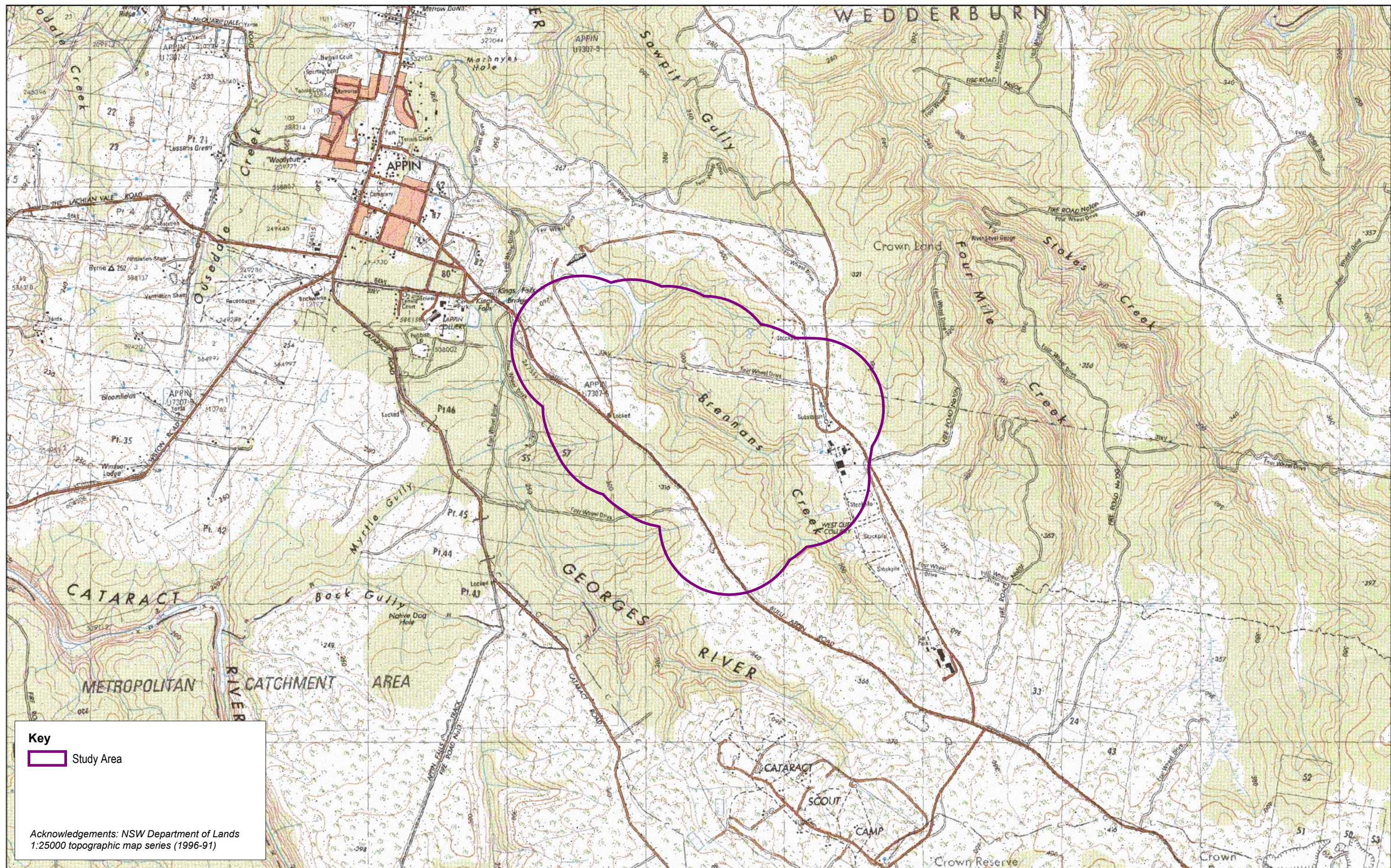


Figure 3: Topographic map of the Study Area showing land use.

Figure 3: Topographic map of the Study Area showing land use.

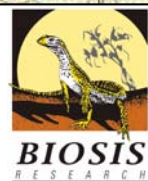
DATE: 5 June 2007

Checked by: MR

File number: S4200

Location: ..4000\4200s\4200\SI\SI figures\S4200 nats\_F3 topo.WOR

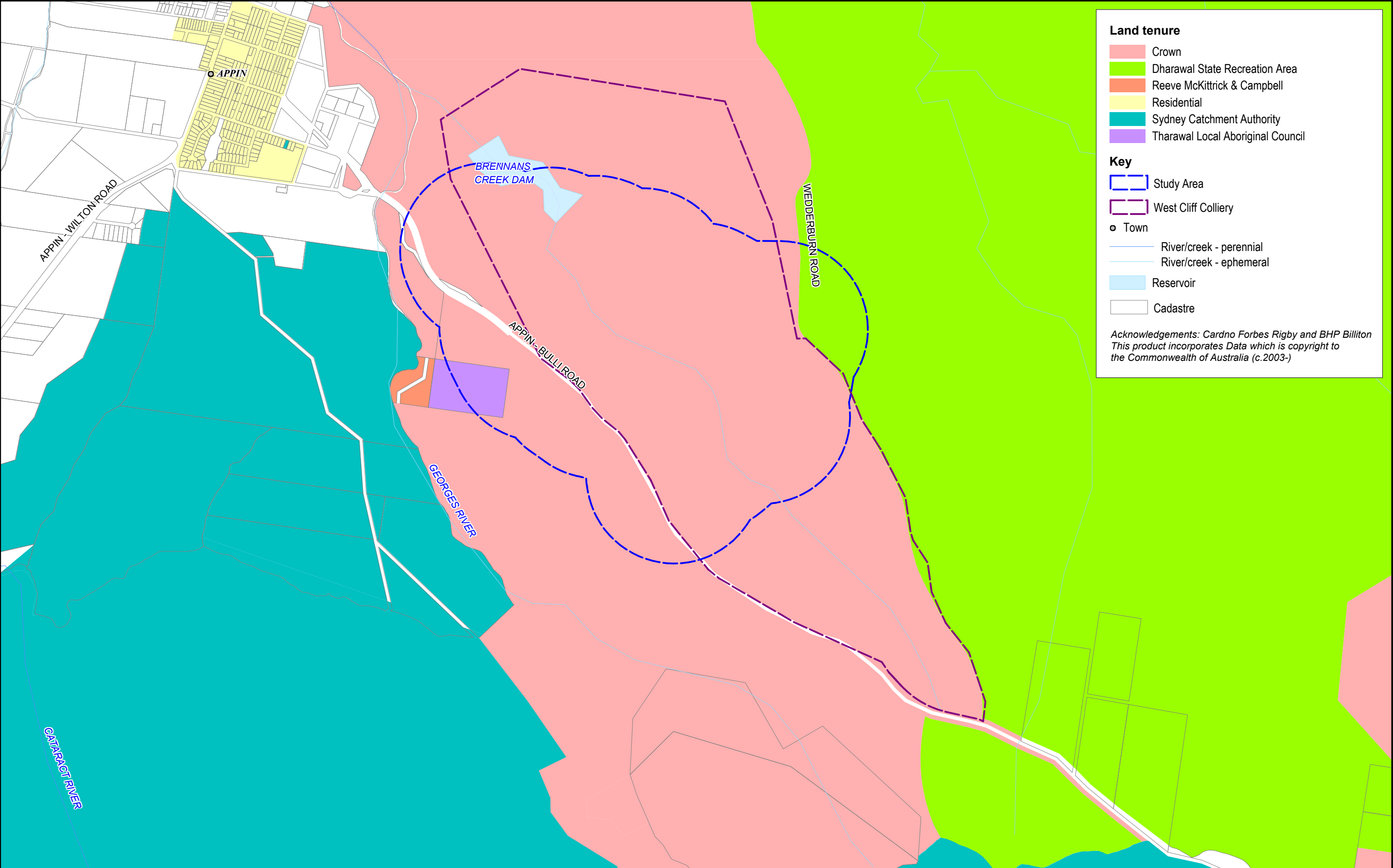
Scale:

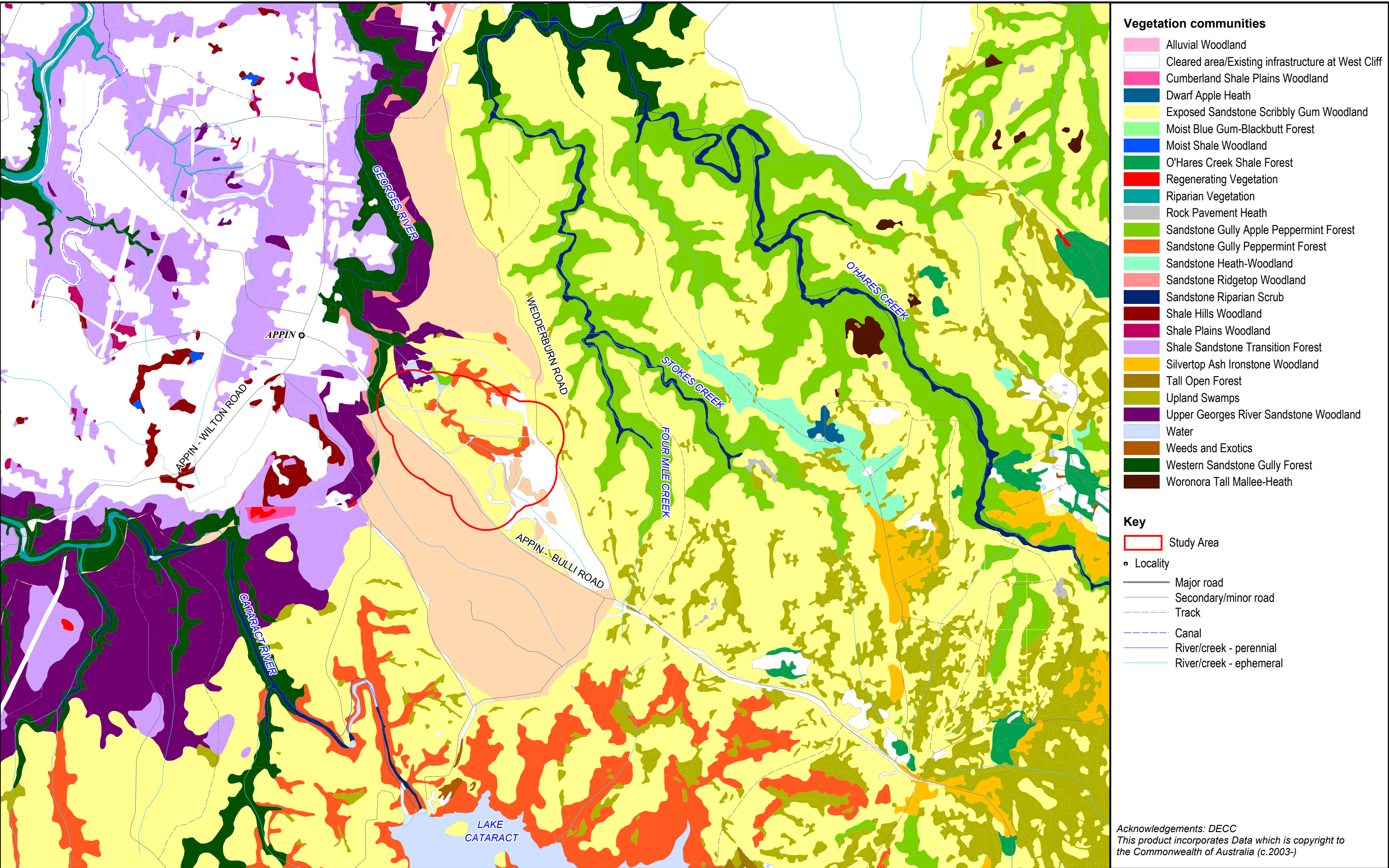


BIOSIS RESEARCH Pty. Ltd.

15 - 17 Henrietta Street  
Chippendale  
NEW SOUTH WALES 2008





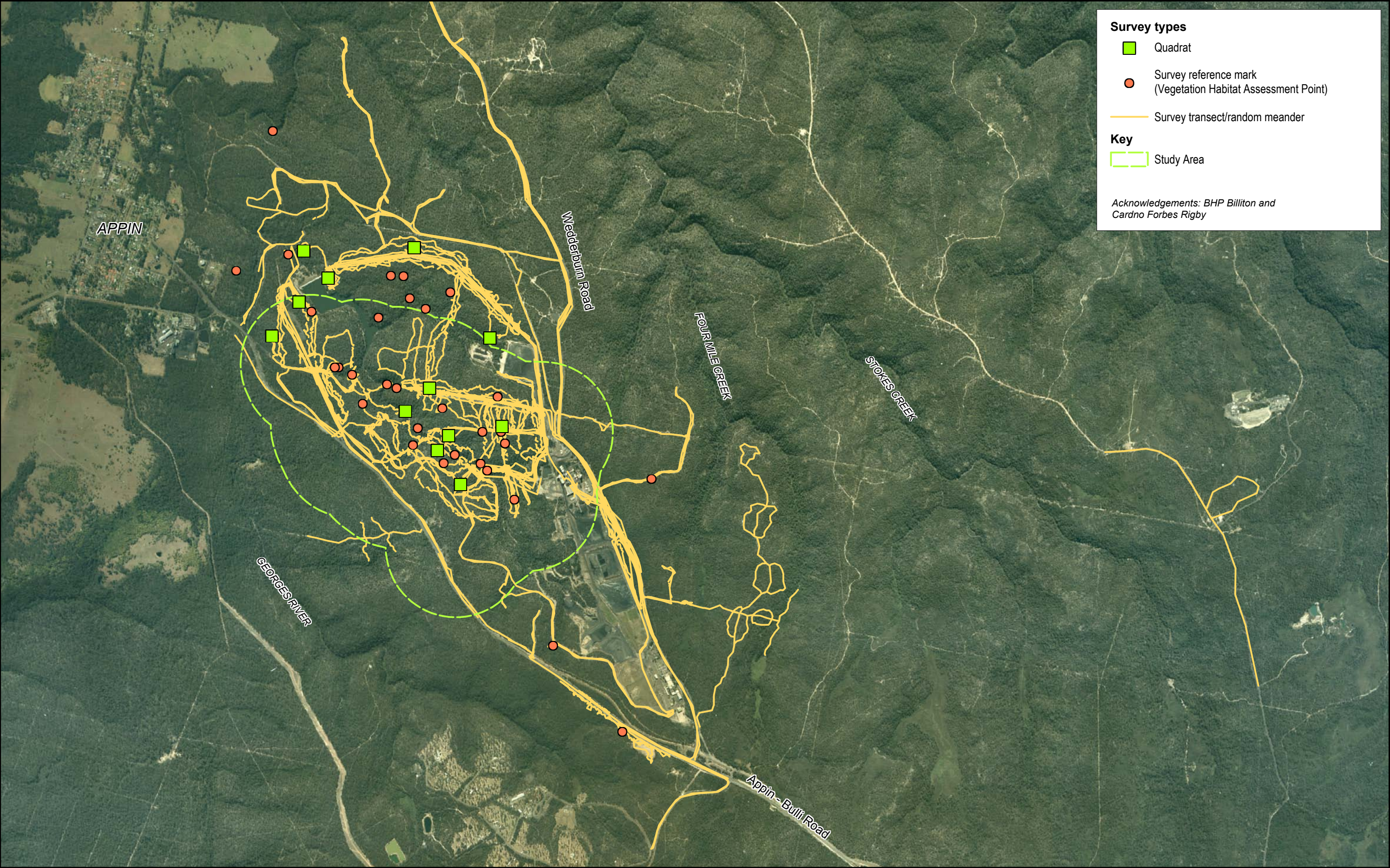


- Vegetation communities**
- Alluvial Woodland
  - Cleared area/Existing infrastructure at West Cliff
  - Cumberland Shale Plains Woodland
  - Dwarf Apple Heath
  - Exposed Sandstone Scribbly Gum Woodland
  - Moist Blue Gum-Blackbutt Forest
  - Moist Shale Woodland
  - O'Hares Creek Shale Forest
  - Regenerating Vegetation
  - Riparian Vegetation
  - Rock Pavement Heath
  - Sandstone Gully Apple Peppermint Forest
  - Sandstone Gully Peppermint Forest
  - Sandstone Heath-Woodland
  - Sandstone Ridgetop Woodland
  - Sandstone Riparian Scrub
  - Shale Hills Woodland
  - Shale Plains Woodland
  - Shale Sandstone Transition Forest
  - Silvertop Ash Ironstone Woodland
  - Tall Open Forest
  - Upland Swamps
  - Upper Georges River Sandstone Woodland
  - Water
  - Weeds and Exotics
  - Western Sandstone Gully Forest
  - Woronora Tall Mallee-Heath

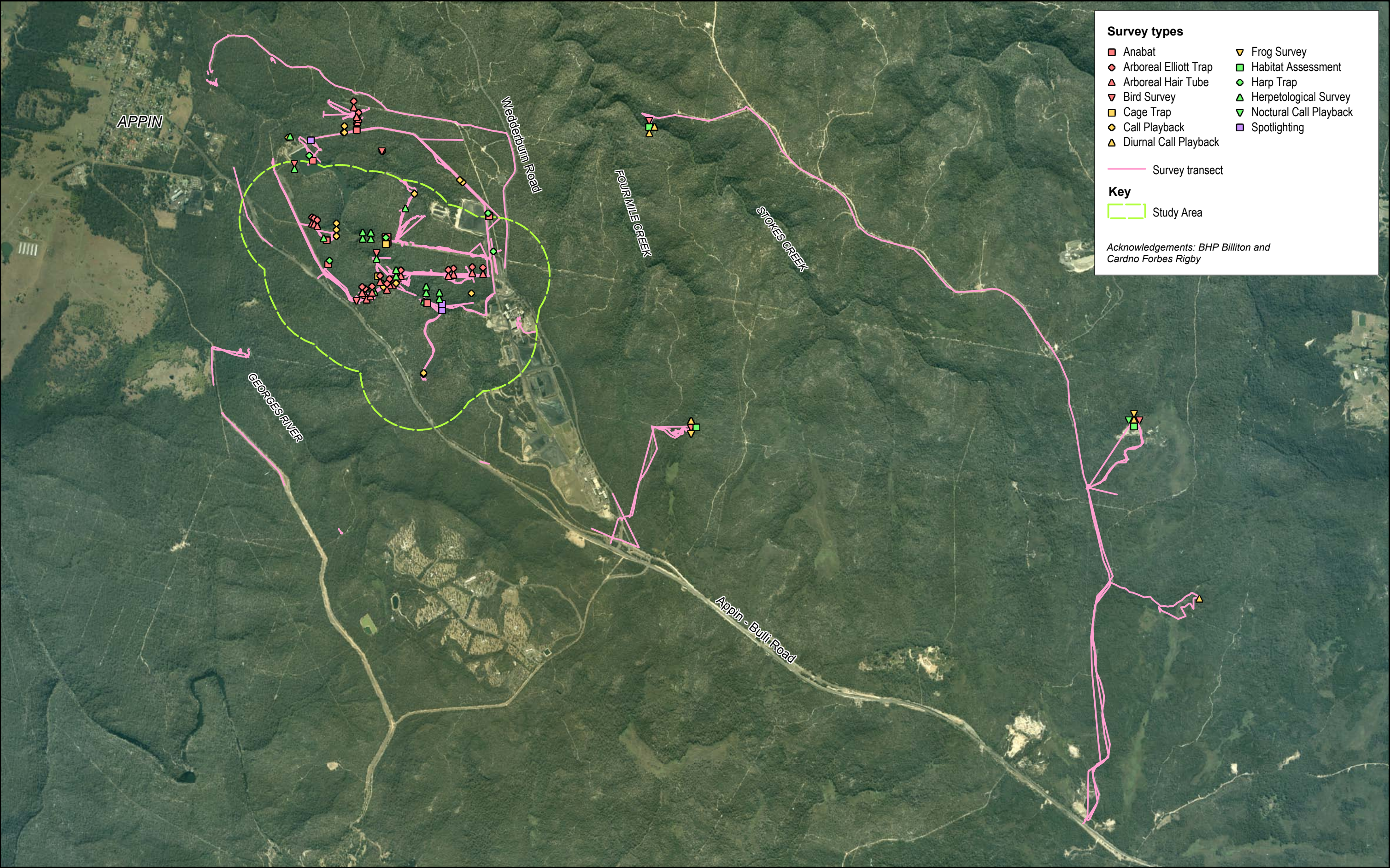
- Key**
- Study Area
  - Locality
  - Major road
  - Secondary/minor road
  - Track
  - Canal
  - River/creek - perennial
  - River/creek - ephemeral

Acknowledgements: DECC  
This product incorporates Data which is copyright to the Commonwealth of Australia (c.2003-)

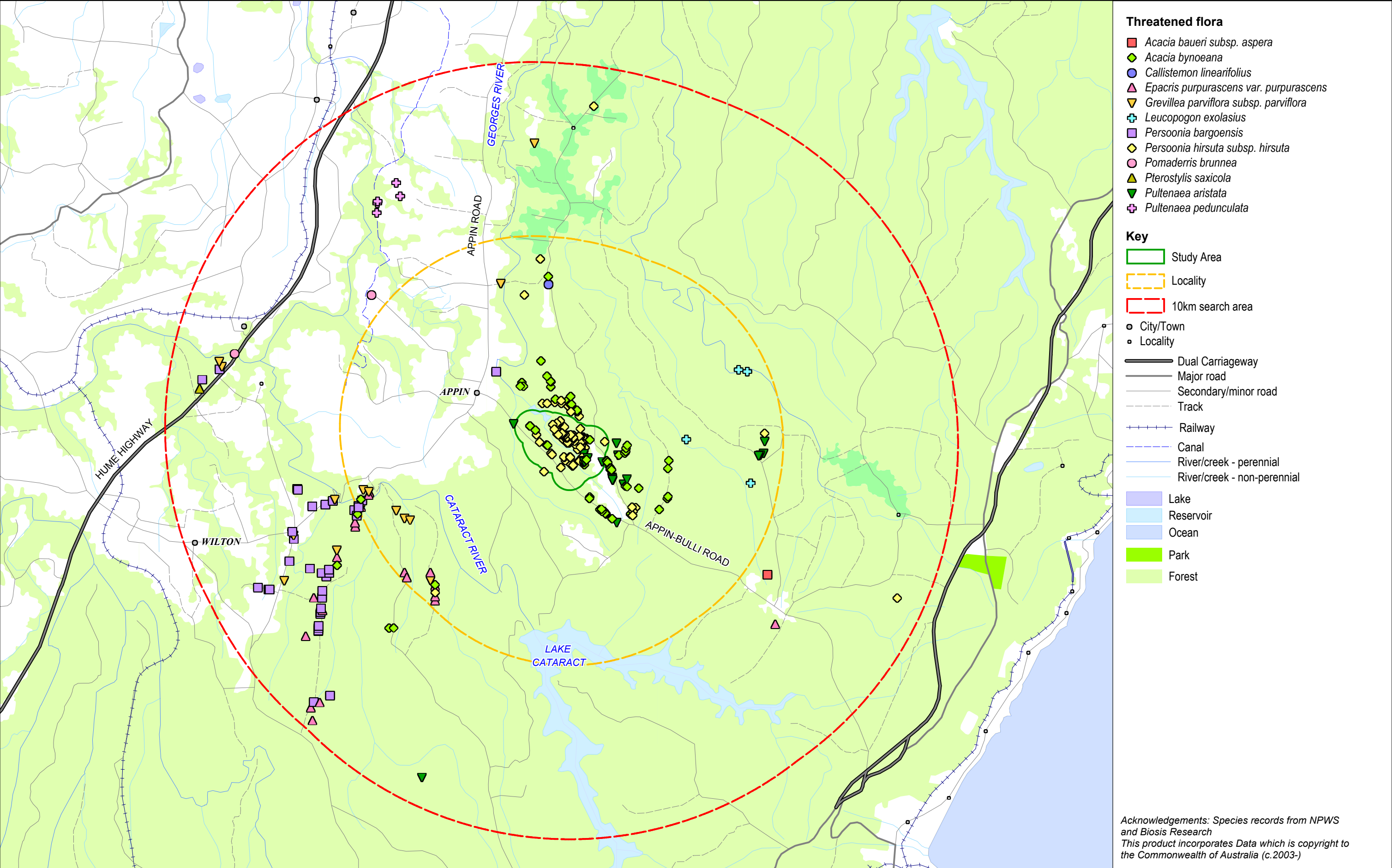




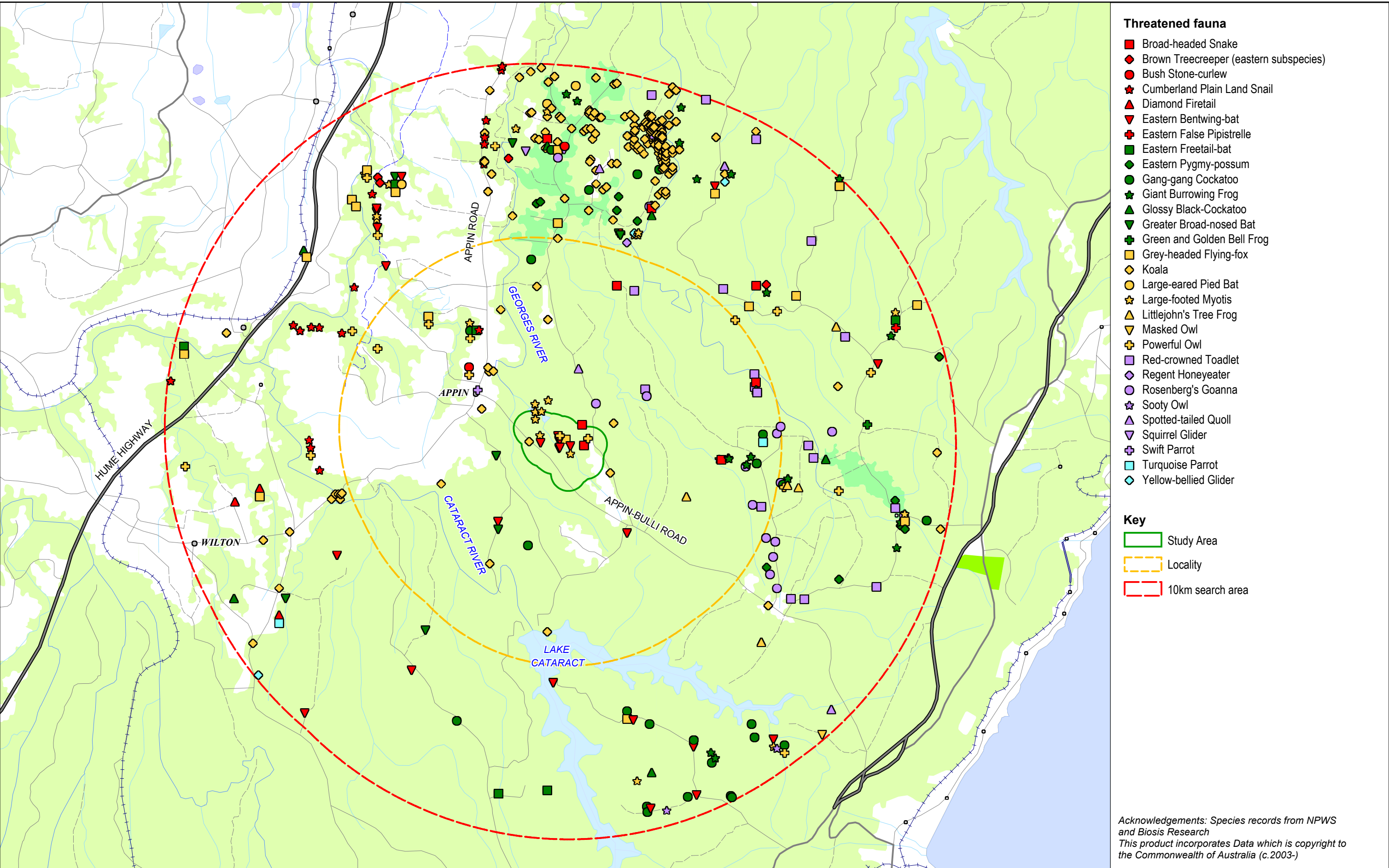














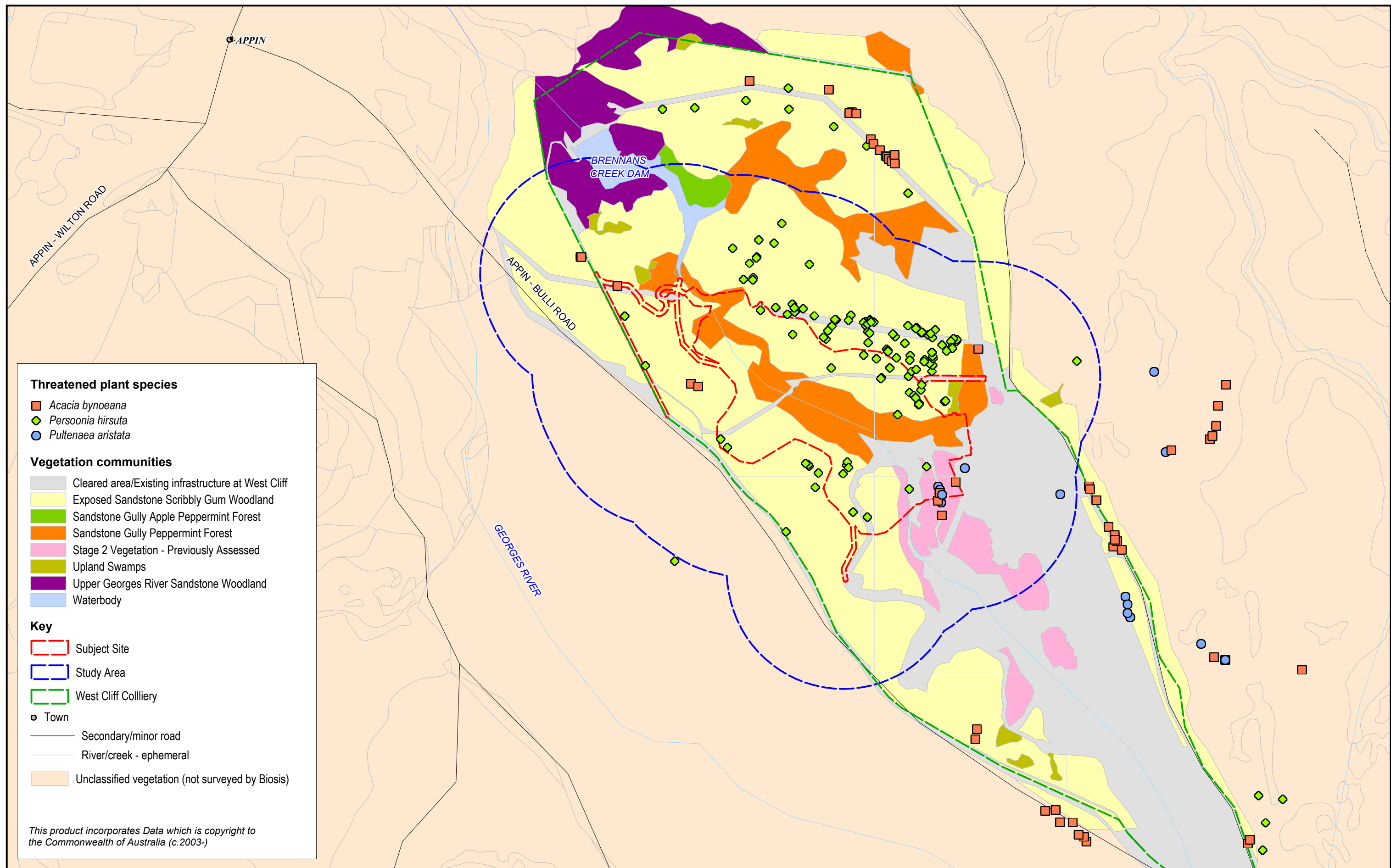


Figure 10: Threatened plant species recorded by Biosis Research from within the Study Area.

DATE: 19 June 2007

Checked by: MR

Location: ..4000\4200s\4200\SIS\SIS figures\S4200 nats\_F10 plant spp.WOR

File number: S4200

Scale:

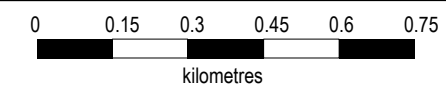


Figure 10: Threatened plant species recorded by Biosis Research from within the Study Area.



BIOSIS RESEARCH Pty. Ltd.

15 - 17 Henrietta Street  
Chippendale  
NEW SOUTH WALES 2008



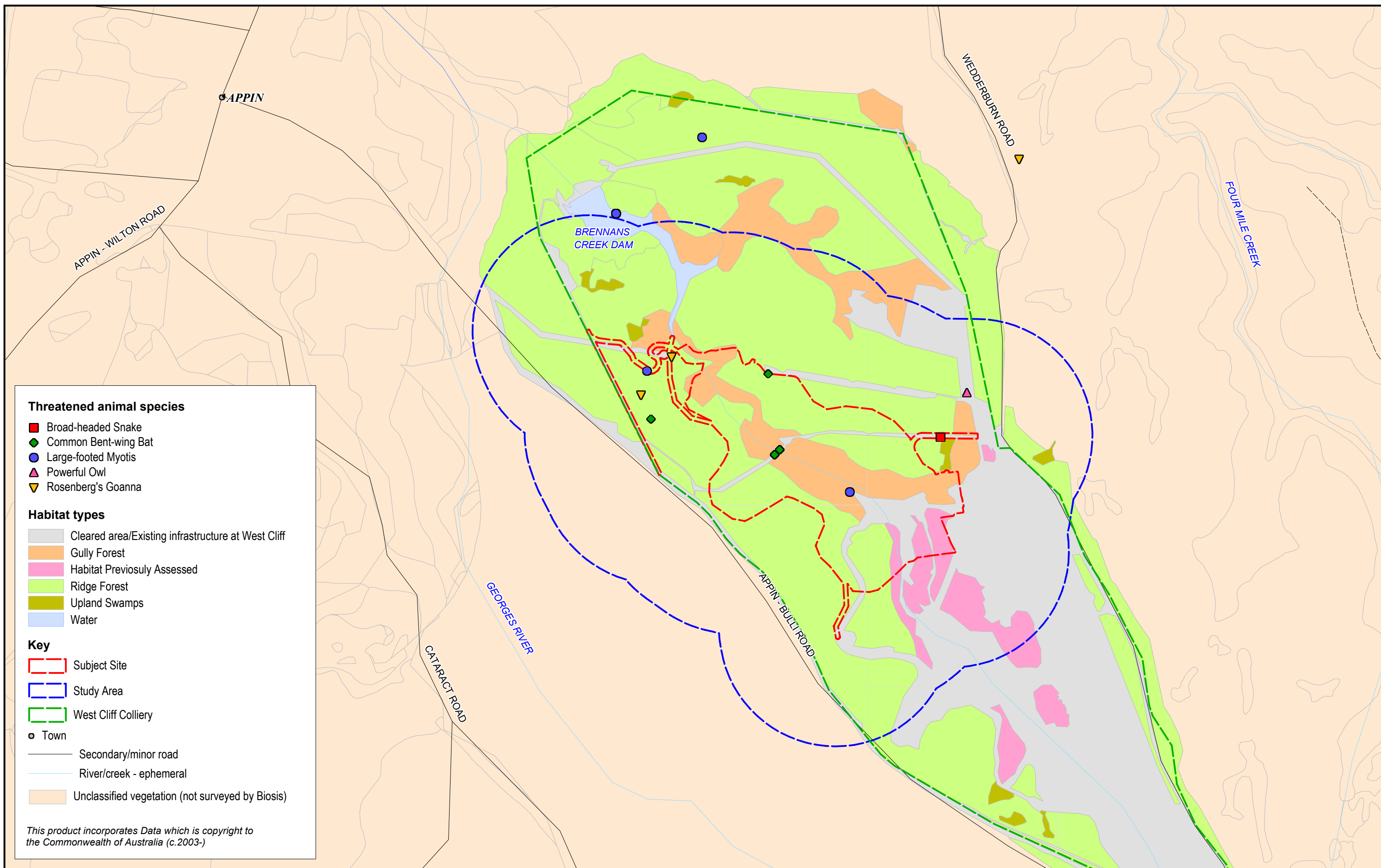


Figure 11: Threatened animal species recorded by Biosis Research from within the Study Area.

DATE: 19 June 2007

Checked by: MR

Location: ..4000\4200s\4200\SI\SI figures\S4200 nats\_F11 animal spp.WOR

File number: S4200

Scale:

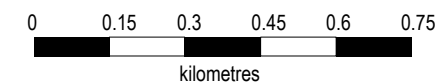


Figure 10: Threatened animal species recorded by Biosis Research from within the Study Area.



BIOSIS RESEARCH Pty. Ltd.  
15 - 17 Henrietta Street  
Chippendale  
NEW SOUTH WALES 2008