

Notice of Modification

Section 75W of the *Environmental Planning and Assessment Act 1979*

As delegate of the Minister for Planning and Infrastructure, I modify the project approval referred to in Schedule 1, as set out in Schedule 2.



Chris Ritchie
A/Director
Industry, Key Sites & Social Projects

Sydney 16 JANUARY

2014

SCHEDULE 1

The development consent (DA53/97) granted by the Minister for Urban Affairs and Planning for the Baiada Poultry Processing Complex on 9 February 1998.

SCHEDULE 2

1. In Schedule 1 delete the description after Land and insert instead:

Lot 100 DP 1097471, "Oakburn", in the Tamworth local government area
2. In the definitions, delete the definition for DECCW, Department, Minister, RTA, Site, and applicant where it secondly occurs, and insert the following definitions in alphabetical order:

Department	Department of Planning and Infrastructure
EPA	Environment Protection Authority
Minister	Minister for Planning and Infrastructure
OEH	Office of Environment and Heritage
Replacement rendering plant	The development described by the application to modify consent number DA53/97 Mod 5
RMS	Roads and Maritime Services
Site	the land described in Schedule 1
3. Delete all references to RTA and insert instead RMS.
4. Except in condition 32 of Schedule 3, delete all references to DECC and DECCW and insert instead EPA.
5. In condition 2 of Schedule 2, delete conditions (f) and (g) and insert the following:
 - (f) DA53/97 Mod 5 and the report titled "*Environmental Assessment Report*", dated 29 November 2013 and prepared by PSA Consulting;
 - (g) the site plan in Appendix A except as modified by the Development Application plans in Appendix B; and
 - (h) the conditions of this consent.
6. Insert the following after condition 6 of Schedule 2:

Statutory Requirements

 - 6a) The Applicant shall ensure that all licences, permits and approval/consents are obtained as required by law and maintained as required throughout the life of the Development. No condition of this consent removes the obligation for the Applicant to obtain, renew or comply with such licences, permits or approval/consents.
7. Insert the following after condition 7 of Schedule 2:
 - 7a) Within 3 months of any modification approval, the Applicant must prepare and implement a revised version of any relevant management plan or monitoring program to the satisfaction of the Director-General.

8. Insert the following after condition 18 of Schedule 3:
 - 18a) The Applicant shall prepare and implement a Stormwater Management Plan for the replacement rendering plant to the satisfaction of the Director-General. The plan must:
 - a) be prepared in consultation with Council and the EPA, and be approved by the Director-General by the end of March 2014;
 - b) be generally consistent with the *Oakburn Rendering Plant Stormwater Management Plan* dated 25 November 2013 prepared by J. Wyndham Prince Pty Ltd, except for revisions that may be required by Council or the EPA.
9. In condition 32 of Schedule 3, delete reference to DECCW and insert instead OEH.
10. Insert the following after Appendix A:

OXLEY HIGHWAY
TAMWORTH NSW 2340

LOT 100 ON DP1097471
(TOTAL LAND PARCEL 57.64ha)

LOCAL GOVNT: TAMWORTH REGIONAL COUNCIL





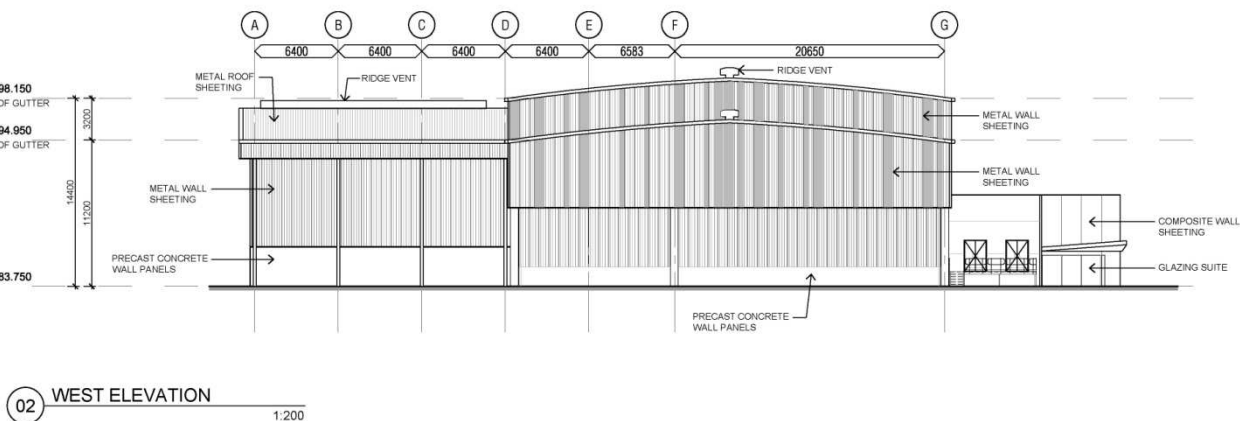
DEVELOPMENT APPLICATION

										CONSULTANT		CLIENT										PROJECT										DRAWING TITLE										SCALE				PROJECT NUMBER		BLDG NUMBER											
												 <div>BAIAIDA POULTRY P/L 1154 Gurnah Rd, Temora, NSW</div> <div><div>HEAD OFFICE P.O BOX 21 Pentde Hls NEW 2945 Telephone : (02) 9462 1000 Facsimile : (02) 9468 4916</div></div>										 <div>WATPAC SPECIALTY SERVICES</div> <div>Watpac - Specialty Services ABN 59 010 722 335 is a Subsidiary of Watpac Limited</div> <div>Level 1, 12 Commercial Road Newstead Qld 4006 PO Box 2053 Fortitude Valley Qld 4006 Fax: (07) 3251 5192 Phone: (07) 3251 6300</div> <div>Website: www.watpac.com.au</div>										OAKBURN PROTEIN RECOVERY PLANT OAKBURN NSW										PROPOSED SITE PLAN										@ A1 = 1:1250 @ A3 = NTS Do Not Scale from Drawings, Verify all Dimensions and Levels on Site				W414		01	
										28.11.13		A		DA ISSUE										JP																																			
										25.11.13		P1		PRELIMINARY ISSUE FOR REVIEW										JP																																			
DATE		ISSUE		AMENDMENT		INITIAL		DATE		ISSUE		AMENDMENT		INITIAL																																													
														AMENDMENTS																																													
This is the sections primary purpose of Watpac's "Specialty Services" and may or may not be tailored, reproduced or copied in whole or part without written consent of Watpac- Specialty Services. This document is copyright and confidential.																																																											



Tuesday, 26 November 2013 1:07:29 PM || I:\M14 - Oxytium Protein Part03 Design & Production\I03.02 CAD Drawings\02.02.02 Archtect\Current CAD\I03.02.dwg

CONSULTANT	CLIENT	PROJECT	DRAWING TITLE	SCALE	PROJECT NUMBER	BLOG NUMBER
	<div><div>BAIDA POULTRY P/L 1156 Gurnard Rd, Tamworth, NSW</div><div>HEAD OFFICE P.O BOX 21 Pindie Hill NSW 2145 Telephone: (02) 9842 1030 Facsimile: (02) 9848 4310 <i>select poultry</i></div></div>	<div><div>WATPAC SPECIALTY SERVICES</div><div>Watpac Specialty Services ABN 59 010 722 335 A Subsidiary of Watpac Limited Level 1, 12 Commercial Road Newcastle QLD 4006 PO Box 2055 Fortitude Valley QLD 4006 Fax: (07) 3201 6392 Phone: (07) 3201 6300 Website: www.watpac.com.au</div></div>	OAKBURN PROTEIN RECOVERY PLANT OAKBURN NSW	@ A1 = 1:250 @ A3 = NTS Do Not Scale from Drawings, Verify all Dimensions and Levels on Site	W414	01
				DRAWN JP CHECKED PS DATE NOVEMBER 2013 APPROVED -	DRAWING NUMBER DA03	ISSUE A



DEVELOPMENT APPLICATION

		28.11.13		A	DA ISSUE		JP
		25.11.13		P1	PRELIMINARY ISSUE FOR REVIEW		JP
DATE	ISSUE	AMENDMENT	INITIAL	DATE	ISSUE	AMENDMENT	INITIAL

This is the exclusive property of Valpas. Specialty Services and may not be copied, reproduced or copied in whole or part without written consent of Valpas. Specialty Services. This document is copyright and confidential.

AMENDMENTS

[illegible]

CLIENT



BAIADA POULTRY P/L
1154 Gunnedah Rd, Tamworth, NSW

HEAD OFFICE
P.O. BOX 21 Pende Hill NSW 2145
Telephone: (02) 9842 1000
Facsimile: (02) 9688 4818

WATPAC
SPECIALTY SERVICES
Watpac Specialty Services
ABN 59 010 722 335
a Subsidiary of Watpac Limited
Level 1, 12 Commercial Road
Newstead Qld 4006
PO Box 2053
Fortitude Valley Qld 4006
Phone: (07) 3251 8392
Fax: (07) 3251 6300
Website: www.watpac.com.au

PROJECT

OAKBURN PROTEIN
RECOVERY PLANT
OAKBURN NSW

DRAWING TITLE

**PROPOSED
ELEVATIONS**

SCALE @ A1 = 1:200 @ A3 = NTS Do Not Scale from Drawings. Verify all Dimensions and Levels on Site	
DRAWN JP	CHECKED PS
DATE NOVEMBER 2013	APPROVED -

PROJECT NUMBER	BLDG NUMBER
W414	01
DRAWING NUMBER	ISSUE
DA05	A