

BERRIMA CEMENT WORKS MODIFICATION 14

LANDSCAPE MITIGATION MEASURES FOR PROPOSED NEW SITE ACCESS

Boral Cement Limited

Address 125 Taylor Avenue, New Berrima
RPD Lot 22 DP582276, Lot 2 DP1136734
Client Boral Cement Limited
Landscape Architect SLR Consulting

LANDSCAPE INTENT

This proposal includes landscape treatment for the proposed new site access to the Boral Cement Works in Berrima. This is to mitigate the potential visual impacts of proposed works, and contribute to the visual amenity of the region. Planting and landscaping works are to include:

- Low maintenance and drought tolerant planting to encourage successful establishment
- Grouped tree plantings amongst native pasture grasses contributing to the visual amenity of the surrounding landscape
- Tree plantings to increase habitat opportunities and connectivity to surrounding vegetation
- Use of feature trees within landscaping to integrate with The Remembrance Driveway
- Species selected for their anticipated growth allowing sightlines to be maintained.

Species selection is adopted from local native plant community types and listed Threatened Ecological Communities likely to occur within the the region.

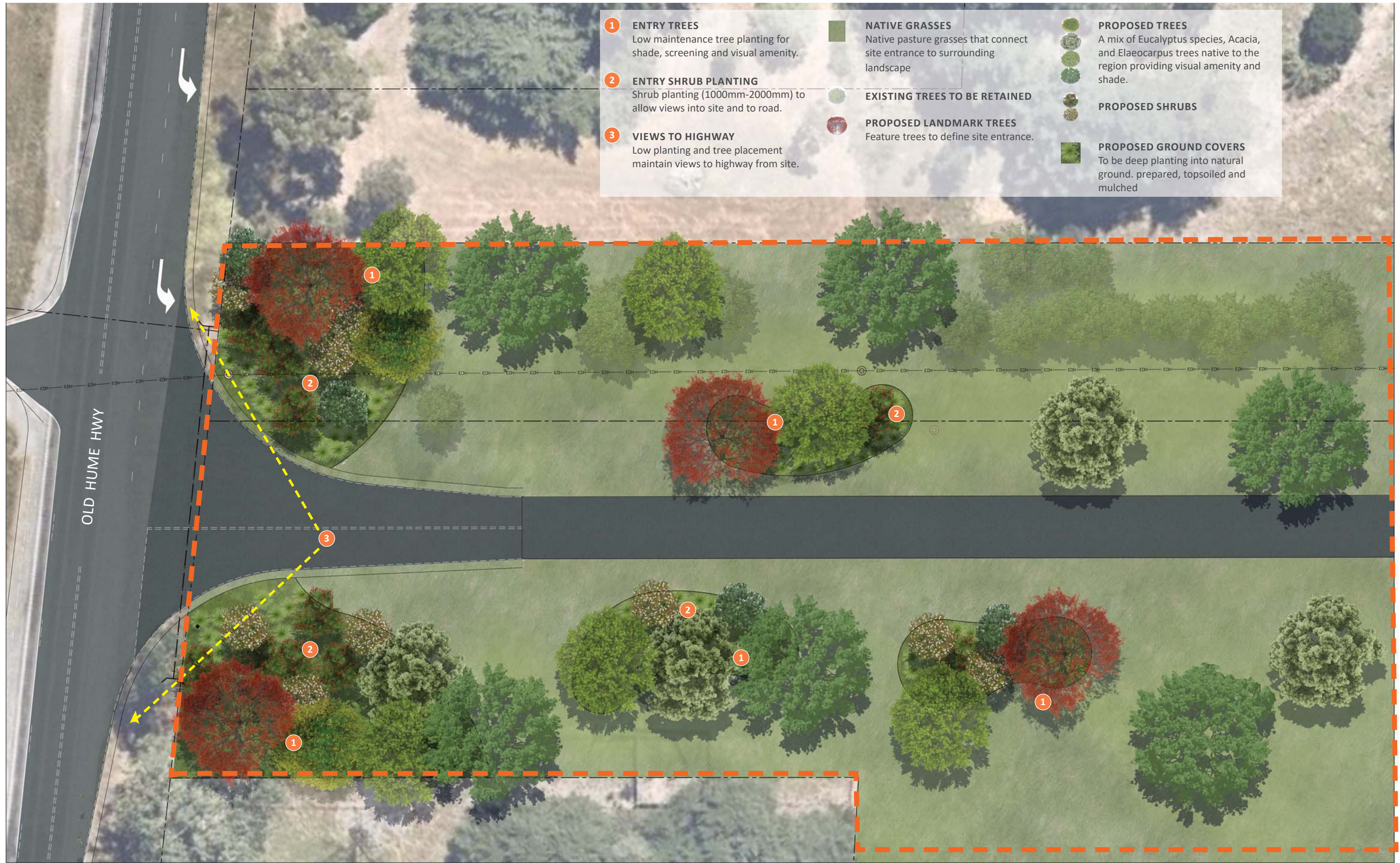
ISSUE	DESCRIPTION	CHECKED	APPROVED	DATE
A	DRAFT ISSUE	DB	DB	11/11/2021
B	ISSUED FOR CLIENT REVIEW	DB	DB	12/11/2021
C	ISSUED FOR TITLE AMENDMENT	DB	DB	02/12/2021

DRAWING REGISTERED	
DRAWING NUMBER	DRAWING DESCRIPTION
631.30046 - 01	COVERSHEET
631.30046 - 02	LANDSCAPE PLAN
631.30046 - 03	PLANT PALETTE AND IMAGES
631.30046 - 04	LANDSCAPE MONTAGE



SITE LOCATION
Not to scale





FEATURE TREES



Acacia elata



Brachychiton acerifolius



Eucalyptus albens



Eucalyptus melliodora



Eucalyptus pauciflora



Elaeocarpus reticulatus

FEATURE GROUNDCOVERS AND GRASSES



Grevillea rosmarinifolia



Grevillea wilkinsonii



Lepidosperma laterale



Lomandra longifolia



Stackhousia monogyna



Wahlenbergia gracilis

GRASSES



Bothriochloa macra



Microlaena stipoides



Themeda australis

PLANT SCHEDULE		
TREES		
SPECIES	COMMON NAME	POT SIZE
Acacia elata	Ceder Wattle	45L
Brachychiton acerifolius	Illawarra Flame Tree	45L
Elaeocarpus reticulatus	Blueberry Ash	45L
Eucalyptus albens	White Box	45L
Eucalyptus melliodora	Yellow Box	45L
Eucalyptus pauciflora	White Sallee	45L
FEATURE GROUNDCOVERS		
Grevillea rosmarinifolia	Rosemary Grevillea	140mm
Grevillea wilkinsonii	Tumut Grevillea	140mm
Lepidosperma laterale	Variable sword sedge	140mm
Lomandra longifolia	Basket Grass	140mm
Stackhousia monogyna	Creamy candles	140mm
Wahlenbergia gracilis	Sprawling Bluebell	140mm
GRASSES		
Bothriochloa macra	Red Grass	Seed
Microlaena stipoides	Weeping Grass	Seed
Themeda australis	Kangaroo Grass	Seed

